

Internal Consultation Report: Greening Parkville – Community Workshop

City of Melbourne

Saturday 21 March, 2015

**Bong Su Room, Melbourne
9:30 am – 12:30pm**



Table of Contents

1. Executive Summary	3
2. Background.....	5
3. Participants	5
4. Getting Started.....	5
5. Presentation: Urban Forest Challenges and Opportunities, Ian Shears, City of Melbourne	5
6. Participatory Mapping – Places We Value.....	6
6.1 Valued Places	8
6.2 Trees – More Greening Needed.....	9
7. Presentation: Neighbourhood Character, Ian Shears, City of Melbourne.....	11
8. Designing Parkville's Urban Forest Character	12
9. Vision statement for Parkville	14
10. Next steps.....	19
Appendix 1 – Values mapping outputs	20

1. Executive Summary

The City of Melbourne is developing an urban forest precinct plan for Parkville, which will guide tree planting for the precinct for the next ten years. Community input is essential in the development of the plan - shaping the vision statement, planting priorities and future forest character for Parkville. Community involvement included a 3-hour workshop and month-long online engagement on the Participate Melbourne website.

Workshop

The workshop was held by the City of Melbourne Urban Forest Team for local community members to participate in the development of the precinct plan. On 21 March, 2015, approximately 140 community members attended a 3-hour Saturday morning workshop at the Melbourne Zoo in Parkville.

Participants were given a presentation on the urban forest and then asked to work together at each table on maps of Parkville to identify locations that were valued for reasons such as culture and heritage, nature and civic values. Later in the session, each table was asked to use those same maps to identify priority locations for tree planting. The mapping information will be used to guide locations for future tree planting.

The second task of the workshop was to create a 'vision statement' that defined each table's desired character for the future urban forest in Parkville. As part of this process each table was provided with a set of photos showing different trees in different landscapes. The groups were asked to select the images that represented their idea of the future urban forest in Parkville. Considering these images, the groups then worked to create a vision statement. Once finished, each table also was given the opportunity to share their vision with the room.

These vision statements will be used to define the overall vision and future urban forest character for the precinct and to guide the selection of an appropriate species palette for Parkville. Some key themes that emerged from this exercise were:

- Preserving the existing local character of areas within Parkville
- Social inclusion and equity
- Sustainability, longevity and resilience to drought
- The use of alternative water and WSUD
- Colour and beauty
- Shade and canopy

Participants were advised that their work would be used to develop a draft precinct plan that will be made available for public comment prior to being finalised. The draft plan and a summary consultation report will be made available at participate.melbourne.vic.gov.au.

A note on Royal Park

The Parkville precinct is geographically dominated by Royal Park, with various small residential pockets at the edges of the park. The vegetation character in Royal Park is

guided by the Royal Park Masterplan 1997, not the precinct plan. As such, participants at the workshop were asked to focus on Parkville Streets and not the areas within Royal Park.

Online Participation

The community were asked to participate in the Parkville urban forest conversation throughout the month of March. Using the new Participate Melbourne platform, the three activities from the workshop were replicated online.

During the month-long consultation time, 771 people visited the Parkville Urban Forest participation page. 47 people made contributions to the page.

Key themes for online participants were:

- Species diversity
- Shade and cooling
- Indigenous and native plants
- Plants and trees for biodiversity
- Reclaiming asphalt for greening

2. Background

The City of Melbourne is seeking community feedback and input into the development of an urban forest precinct plan for Parkville, which will guide tree planting in the area over the next ten years. As part of the implementation of the Urban Forest Strategy, precinct plans will be developed for each of the City's ten precincts. To date, seven precinct plans have been completed, with Parkville, Southbank and Fishermans Bend to be completed this year. For more information on Melbourne's urban forest and the urban forest workshops, visit melbourneurbanforestvisual.com.au.

3. Participants

Around 140 participants joined Melbourne City Councillors and staff at the community workshop on Saturday 21st March at the Melbourne Zoo, Parkville. This is the highest attendance at any of the precinct plan workshops to date.

Staff included Councillor Arron Wood, Urban Landscapes branch manager Ian Shears, 13 City of Melbourne officers and two researchers from the Australian Research Centre for Urban Ecology (ARCUE).

4. Getting Started

Councillor Wood formally welcomed the participants. The facilitator Yvonne Lynch explained that the objectives of the workshop were to:

- Understand how the community values the urban forest;
- Involve the community in setting priorities for tree planting in Parkville; and,
- Develop a vision for the future character of the urban forest in Parkville to guide the planting strategy.

5. Presentation: Urban Forest Challenges and Opportunities, Ian Shears, City of Melbourne

This presentation provided an overview of the development of the Urban Forest Strategy (UFS) and an overview of the process that would guide the development of a plan for Parkville.

The process:

- Work with community to develop plans and guide tree planting.
- Protect and develop neighbourhood character.
- Prioritise works and budgets.

Key principles of the of the UFS

- Climate change.
- Population growth.
- Heat island effect.
- Design for health and liveability.
- Create healthier eco systems.
- Become a water sensitive city.

- Position Melbourne as a leader in urban forestry.
- Maintain and enhance Melbourne's cultural identity.

Overview of Strategies and targets (to 2040):

- Increase canopy cover.
- Increase urban forest diversity.
- Improve vegetation health.
- Soil moisture.
- Biodiversity.
- Inform and consult with the community.

To keep the workshop running on time, people who have any questions that were not directly linked to the workshop were advised by the facilitator to write down their queries on a whiteboard. The questions were then collected by the staff.



Figure 1 - Ian Shears presents to the workshop participants

6. Participatory Mapping – Places We Value

Participants were asked to introduce themselves to the other people at their table and to identify their favourite landscapes in Parkville. The Participatory Mapping methodology for this exercise was developed by Dr. Dave Kendal from ARCUE. The results are being used to guide the development of the precinct plans, and for Dr. Kendal's research to understand what people think about street trees in urban streetscapes.

Participants were provided with a sheet of stickers and a key that defined what each colour represented. Each colour sticker represented one of the following values:

1. **Civic:** These areas are important because they contribute to the identity of the city, make the city more welcoming or help market the city to national and international visitors.
2. **Natural:** These areas are important because they represent natural places where trees and other plants can grow, where birds, animals or insects could live, or natural processes can occur.
3. **Culture and heritage:** these areas are important because they represent human history and allow me or others to continue and pass down the wisdom and knowledge, traditions, and way of life of ancestors.
4. **Social:** these areas are important because they provide opportunities for meeting or being with other people for social or sporting activities.
5. **Life sustaining:** these areas are important because they help produce, preserve, clean, and renew air, soil and water and they provide shade and protection from wind or rain.

Participants used stickers representing each value to mark locations on a map of the precinct. They were also asked to focus on streets and neighbourhood areas rather than Royal Park.



Figure 2 - Participants place stickers on the map to show places they value

6.1 Valued Places

Participants were asked to place stickers representing one of five values (Beautiful/spiritual, Natural, Culture and Heritage, Social, Life Sustaining) on maps of the Parkville precinct. An online version of the map was created on the Participate Melbourne website. Map 1 indicates all the places/streets which were identified by the participants as valued places.

The polygons were created in ArcGIS software by running a kernel density analysis of the sticker points and then converting those to polygons to show outlines of where values were located. For detailed maps on each value, please go to Appendix1.



Map 1 Places valued by participants

6.2 Trees – More Greening Needed

Participants also used star stickers to identify locations that could be improved with greening. Again, this exercise was available for online participants. The locations are shown in Map 3. The areas identified by the community feed into the priority streets for greening in the precinct plan.



Figure 3 - Participants place stars on the map to show where they would like to see more greening



Map 3 - This map shows places participants thought could be improved by greening

Pin your ideas for Parkville's urban forest

Use the interactive map below to tell us what you like or don't like about a location in Parkville. This could be an existing landscape or an area that could be improved by greening.

Get started by hitting the 'Pin your Comment' button below.

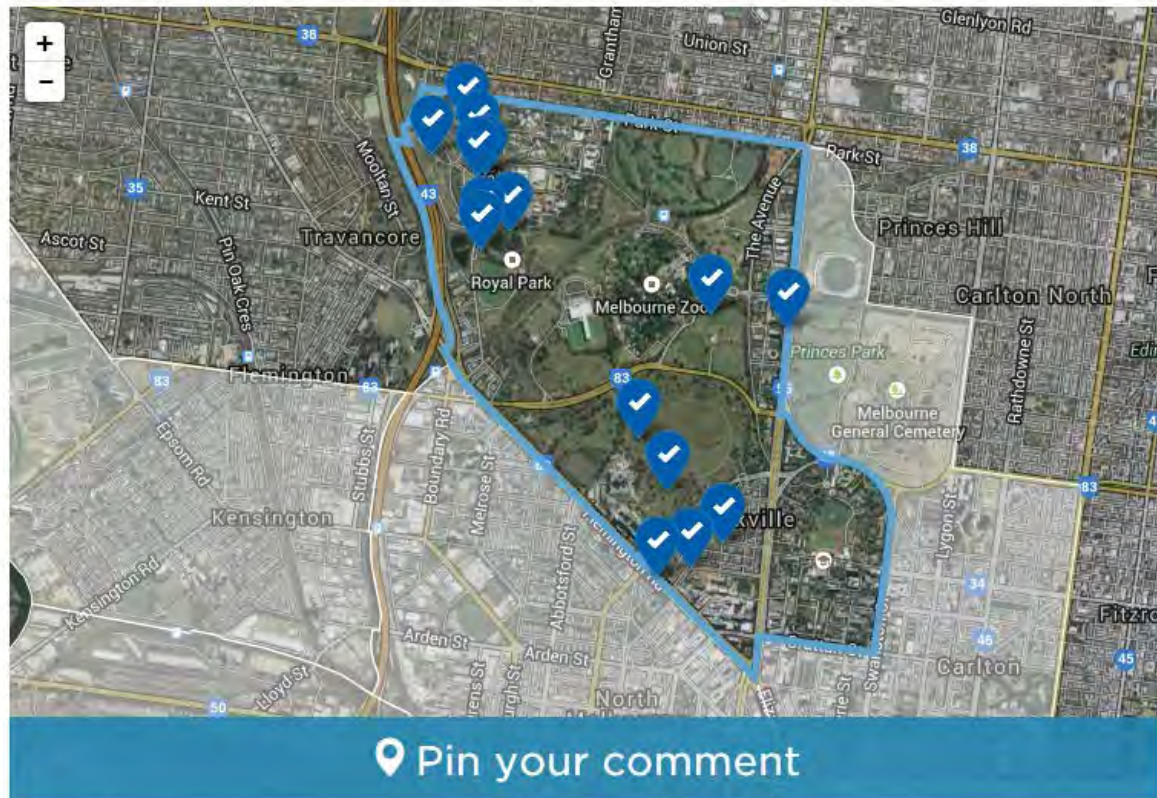


Figure 4 - Online participants were able to mark places on the map that they value and that they think could be improved by greening

7. Presentation: Neighbourhood Character, Ian Shears, City of Melbourne

Ian Shears provided a second presentation on considerations for neighbourhood character and creating a diverse urban forest for the future.

The main concepts presented were:

- A lack of diversity of tree species leaves the urban forest vulnerable to pests and disease.
- The urban forest is dominated by a few species, namely eucalypts, planes, elms and peppercorn trees.
- It is possible to maintain a particular character by using a diversity of species that share similar physical characteristics.



Figure 5 - Workshop participants look at photos to develop neighbourhood character

8. Designing Parkville's Urban Forest Character

Each table was given a set of the same 21 photos. Participants were asked to divide the photos into three groups based upon the future urban forest character they envisaged for Parkville. Photos were to be grouped into the following:

1. Photos that best represent the future of Parkville
2. Photos that represent the future you don't want;
3. Photos that you are unsure about or cannot agree upon.

The photo survey was also available on the Participate Melbourne website. The results from the workshop and online participation were aggregated to achieve a visual representation of the community's vision for their future urban forest.

8.1 Photos that Best Represent the Future of Parkville

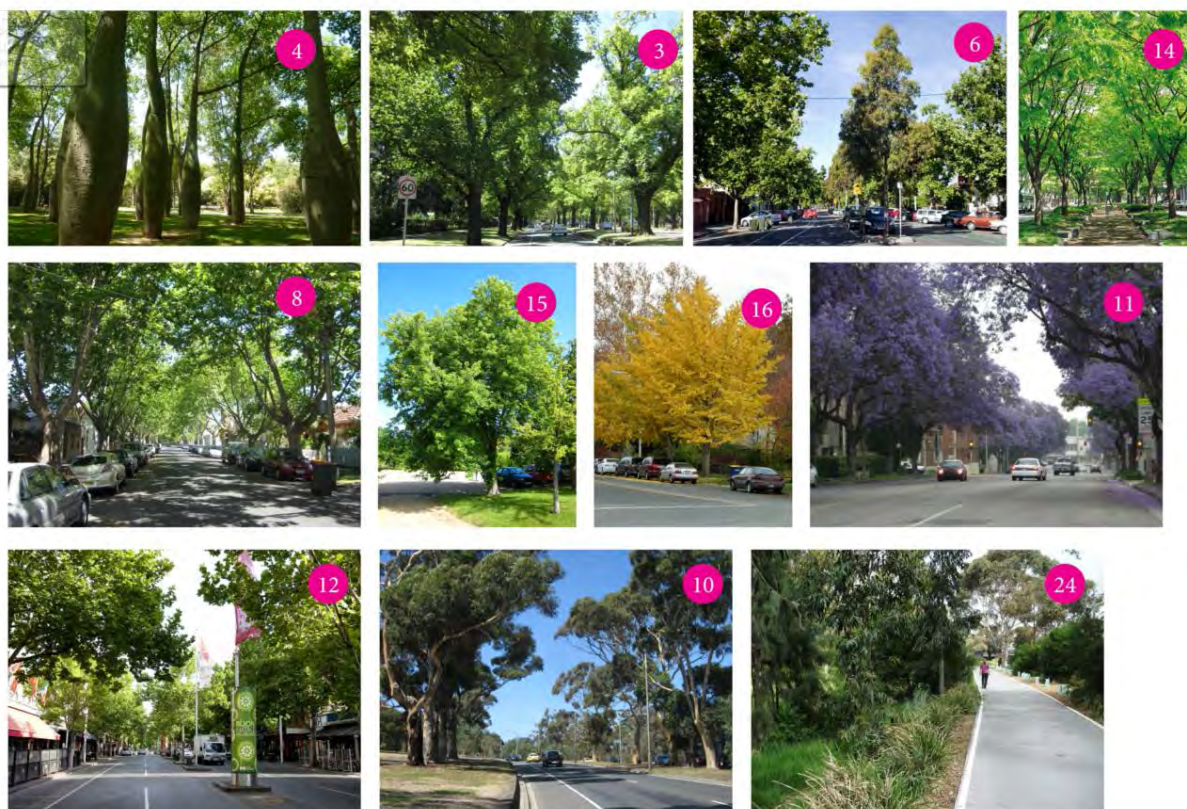



Photo No.	Words associated with image
Photos selected by all tables (11 out of 11) or online participants	
No. 12	Shade, canopy, cooling, beautiful
No. 3	
No. 14	Beautiful, canopy, filtered light, shade, tranquillity
No. 15	Medians, peaceful
Photos selected by 10 out of 11 tables	
No. 24	Pedestrian, bicycles, diversity
Photos selected by 9 out of 11 tables	
No. 4	Filtered light, small, park, shade
No. 6	Shade, cool, diversity
No. 8	Shade
No. 11	
No. 16	Colour, beautiful

MAP AND VISION

PHOTO QUESTIONNAIRE

UPDATES

4 → How much does this photo represent your idea of Parkville's future urban forest?



1

2

3

4

5

Not at all

Very much

0 of 25 answered

^

v

Figure 6 - Online participants completed a photo survey

9. Vision statement for Parkville

Once each table had agreed upon a set of photos to guide their thinking, participants were invited to write a vision for Parkville's future urban forest. One member of each table read out their table's story to the room.

These stories will be combined and used by Council to develop a vision statement in the Precinct Plan to guide future tree selection, design and urban forest projects in Parkville. Each vision is listed in the table below.



Figure 7 - Participants work to develop a vision statement for Parkville

Table Number	Vision	Key words/themes
1	<p>The future urban forest in Parkville should be functional, sustainable, respectful of native/local aesthetic and engage the public.</p> <p><i>Functional – biodiversity, WSUD, shade, shelter and reclaiming asphalt</i> <i>Beauty and shade provided by touching canopies</i> <i>Feature trees – shape, colour and flowers</i></p>	<p>Functional (biodiversity, shade, shelter, water)</p> <p>Sustainable Respectful (heritage and local aesthetic) Engaging and educational Socially inclusive WSUD</p>
2	<p>The future urban forest in Parkville will be liveable, sustainable, diverse, colourful, beautiful and socially equitable. It should respect heritage and local settings, and encourage community ownership and care for public spaces. Existing trees should be protected and community involvement to continue in future generations.</p>	<p>Liveable Sustainable Colourful Respectful heritage Socially equitable</p>

3	<p>The Parkville urban forest should incorporate:</p> <ul style="list-style-type: none"> - Green - Shade - Canopy - Colour - Retain avenues and boulevards - Food producing trees - Water sensitive urban design 	<p>Green Shade Canopy Colour Retain avenues and boulevards Food producing trees WSUD</p>
4	<ul style="list-style-type: none"> • Tree cover should not be compromised by provision of services (eg. garbage collection) • Broad avenues have cultural and historical significance that needs to be preserved • Mix and match deciduous and evergreen, native, exotic and indigenous plants. • Seed pods impact on pedestrians and cyclists. • Localised landscaping to match the neighbourhood – not a one-size-fits-all approach • Shady trees where feasible • Flowering plants are important for birdlife and insects (including bees!) • Maintain and enhance existing characters: Parkville Gardens has native character and South Parkville has a mix of native and introduced species 	<p>Shade Maintain and enhance Localised Flowers Cultural and historical significance</p>
5	<p>The future Parkville urban forest will be a diverse, colourful, beautiful, tranquil environment which includes native and other trees that are shady. The existing nature and feel of the urban forest will be preserved and longevity will be a focus.</p>	<p>Diverse Colourful Beautiful Tranquil Shady Native Exotic Preserve/protect character</p>
6	<p>The future urban forest in Parkville will have diverse streetscapes for people and wildlife under a dense, layered canopy.</p> <p><i>Diverse – evergreen, deciduous, visual diversity, understorey planting varied planting patterns (not just straight), interesting nature strips (veggies), median and side street plantings.</i></p>	<p>Diverse People Wildlife Canopy Pedestrian priority</p>

7	<p>Considerations:</p> <ul style="list-style-type: none"> - Colour consistency in streets - Allergy effects - Seasonality - Species diversity but consistent look in streets - Seed pods a trip hazard in streets - Shady streets - Gum trees in parks, not streets - Street trees must be well behaved (not block drains or push up paths) - Use under-storey planting, WSUD opportunities - Choose trees for parks that attract wildlife 	Seasonality Diversity Consistency Safe Shady Biodiversity WSUD
8	<p>The Parkville urban forest will continue to reflect the historical character but will also be contemporary. It will include native trees and be sustainable, resilient, diverse and smart.</p> <p><i>Smart – holistic, integrated approach to deliver the urban forest in a complex urban environment – ie smart infrastructure design.</i></p>	Historical character Native Sustainable Resilient Diverse Smart Practical Green Colour Shade
9	<p>The future urban forest in Parkville will have:</p> <ol style="list-style-type: none"> 1. Shady boulevards where canopies meet (main roads) 2. Trees that are tall enough to block out buildings 3. Understorey plantings which provide diversity 4. Parks with areas of forest-feel that also provide habitat 	Shade Tall Understorey Boulevards Habitat biodiversity
10	<p>The future urban forest in Parkville will be dense with closed canopies, species variety and colour. There will be understorey planting and trees in both the medians AND nature strips.</p>	Dense Colourful Understorey Diverse Canopies
11	<p>The future urban forest in Parkville should:</p> <ul style="list-style-type: none"> - Encourage birdlife and biodiversity - Be porous/permeable (WSUD) - Be a relaxing environment - Be iconic and unique - Be seasonal - Connected canopies - Have contrasting colours - Preserve the heritage of the area 	Heritage Biodiversity Understorey Relaxing Iconic Seasonal Canopy colourful
Online	<p>Consider urban food sustainability and what food can be provided by the Parkville future urban "forest ecosystem"</p>	Food Ecosystem Productive
	<p>Increased vegetation in this area with paths through a denser garden / forest would be nicer & keep the area cooler in summer.</p>	Dense

	The name "Parkville" says it all lots of parks and trees. Trees start to get a bit sparse towards the Womens and Royal Melbourne Hospital.	
	Would like to see lots more trees and plants that are indigenous to the area, especially for birds. Interspersed with some fruit trees.	Indigenous productive
	Getting rid of Plane trees and planting as many fruit trees as possible	productive
	It was time that we moved away from grass up to tree trunks, no it is not what we have been use to but Mulching has been the trees saviour.	
	To have more native gum trees planted or other species that provide a beautiful aesthetic, homes for birdlife as well as shade.	native
	Stop concreting bluestone gutters. I'm in N Melb. I'd love to drill holes between the bluestone blocks so the trees got water during rain.	
	Innovative greening - vertical gardens, climbing plants and new/interesting species.	innovative
	Probably the fact there isn't much to look at from street view so trees and flowers and food for animals	Productive
	I would like to see more trees that will grow tall and provide lots of shade, I love maple trees and oak trees.	Shade
	Add vertical gardens	Vertical greening
	A combination of native and exotic trees that respects the diversity of heritage in this area, pre and post settlement.	Native and exotic
	More shady areas in Royal Park, and some water features to attract more birds. It is hot and dry. Cyclists should not share pathways.	Shady
	Preference should be to provide food and shelter for native wildlife. Their needs are more basic and essential than ours.	Productive Habitat
	Greater diversification in tree species as noted in the strategy is key. Trees that were historically in the areas would be great to have.	diverse
	More nature strips should be created along the many wide footpaths which will reduce heat and allow water filtration into the earth.	Water cooling
	More street trees should be planted in the roadways and/or in new and existing centre islands and footpaths.	

Some noted inspirations arose from the visions:

- Tree tags could be used to increase public awareness and education – include the date planted and the type of tree
- Many tables noted median plantings as well as nature strips
- The combination of heritage exotic plantings and native and indigenous plants is a defining characteristic of Parkville and should be preserved.

A summary of these key words provided by all groups in the photo and visioning activities was combined into the following Wordle.



Figure 8 – This Wordle shows the most common words used in the vision statements and photo comments

10. Next steps

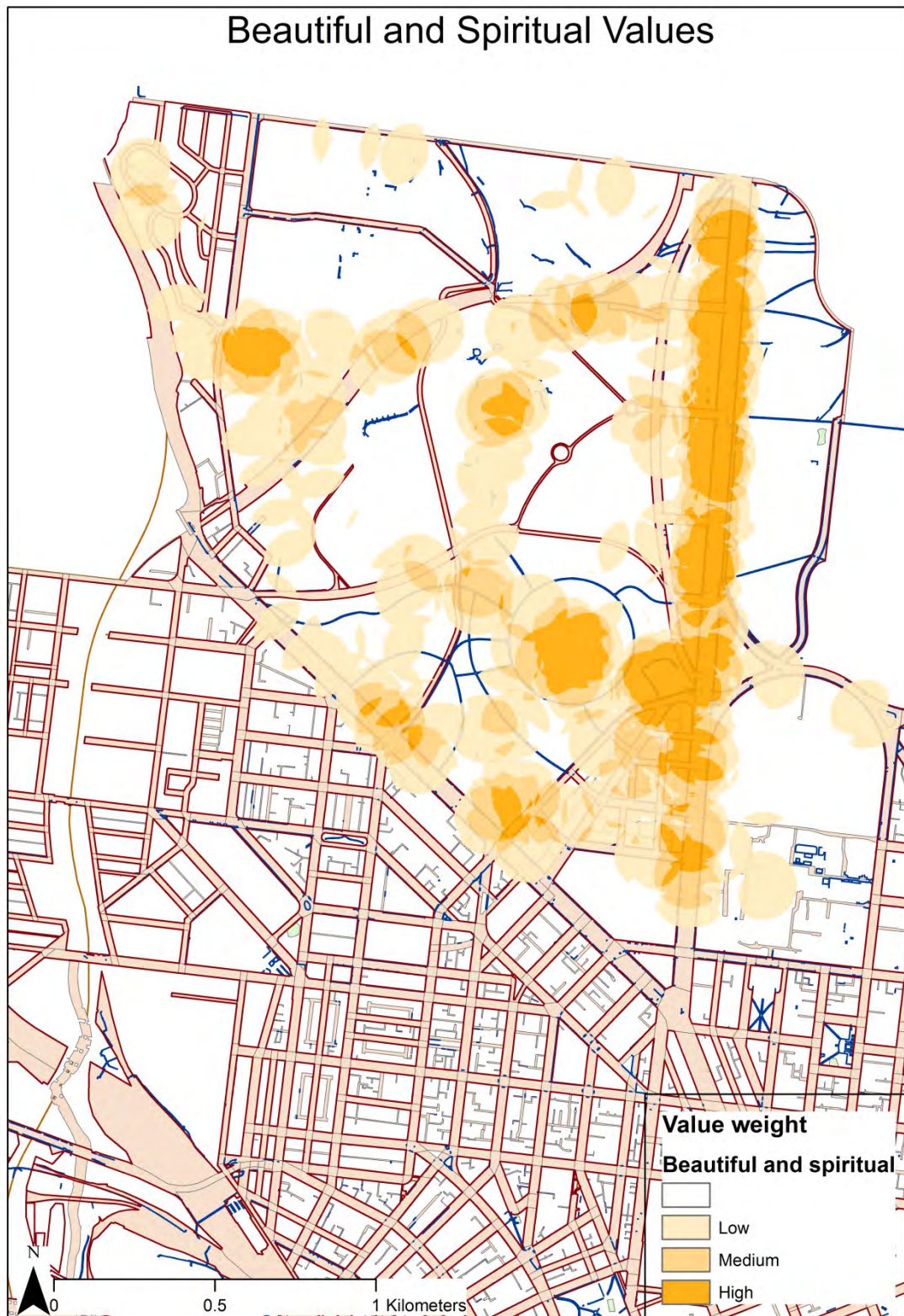
Yvonne Lynch, from City of Melbourne outlined the next steps in the development of the precinct plans:

- Information gathered in workshops will be written up in a report
- These findings will be incorporated into a draft precinct plan
- The draft plan would be put out to the community for comment
- A final plan would be presented to Council in 2015.

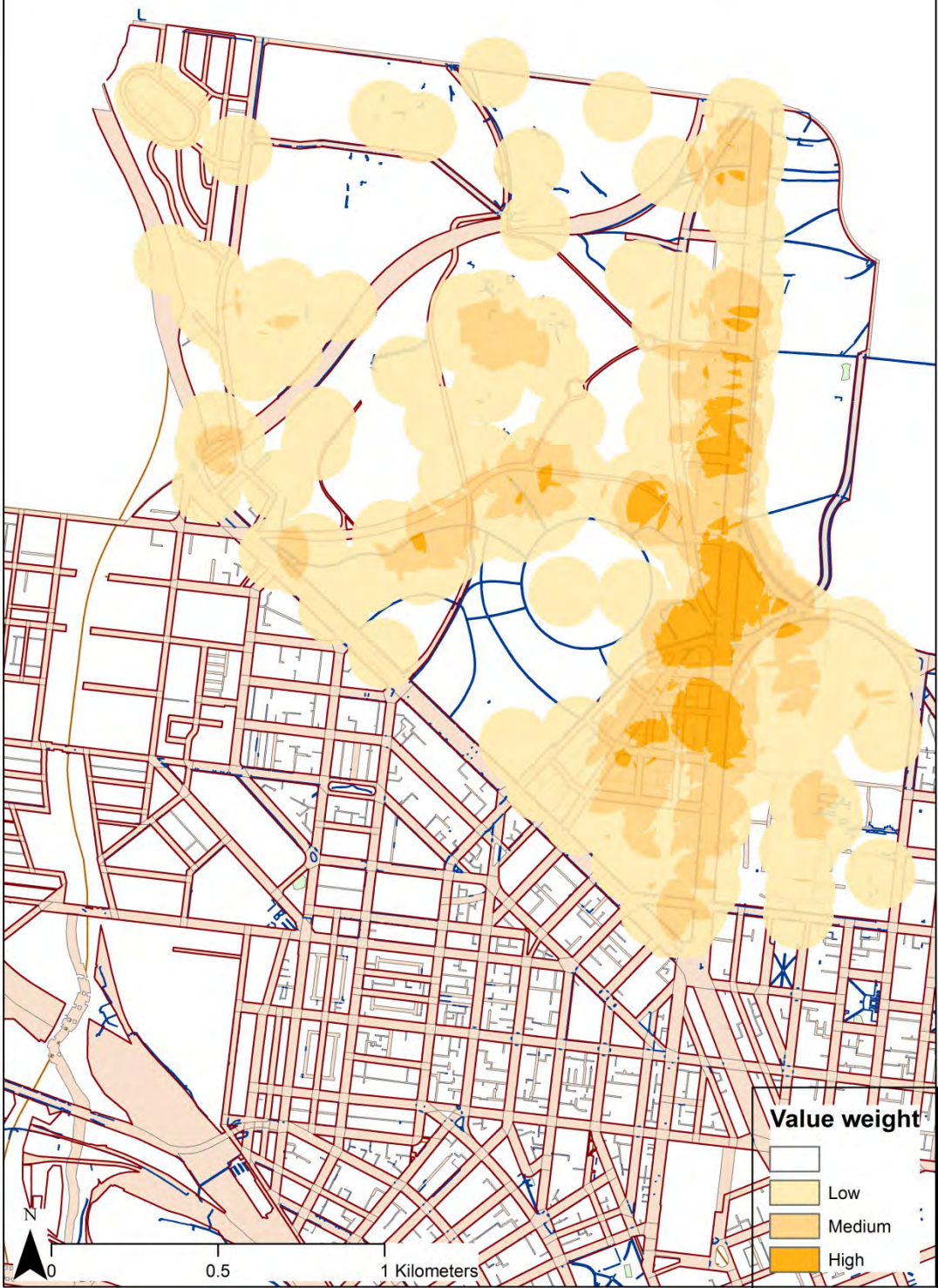
To continue to participate and comment online visit

<http://participate.melbourne.vic.gov.au/projects/urban-forest-precinct-plan>

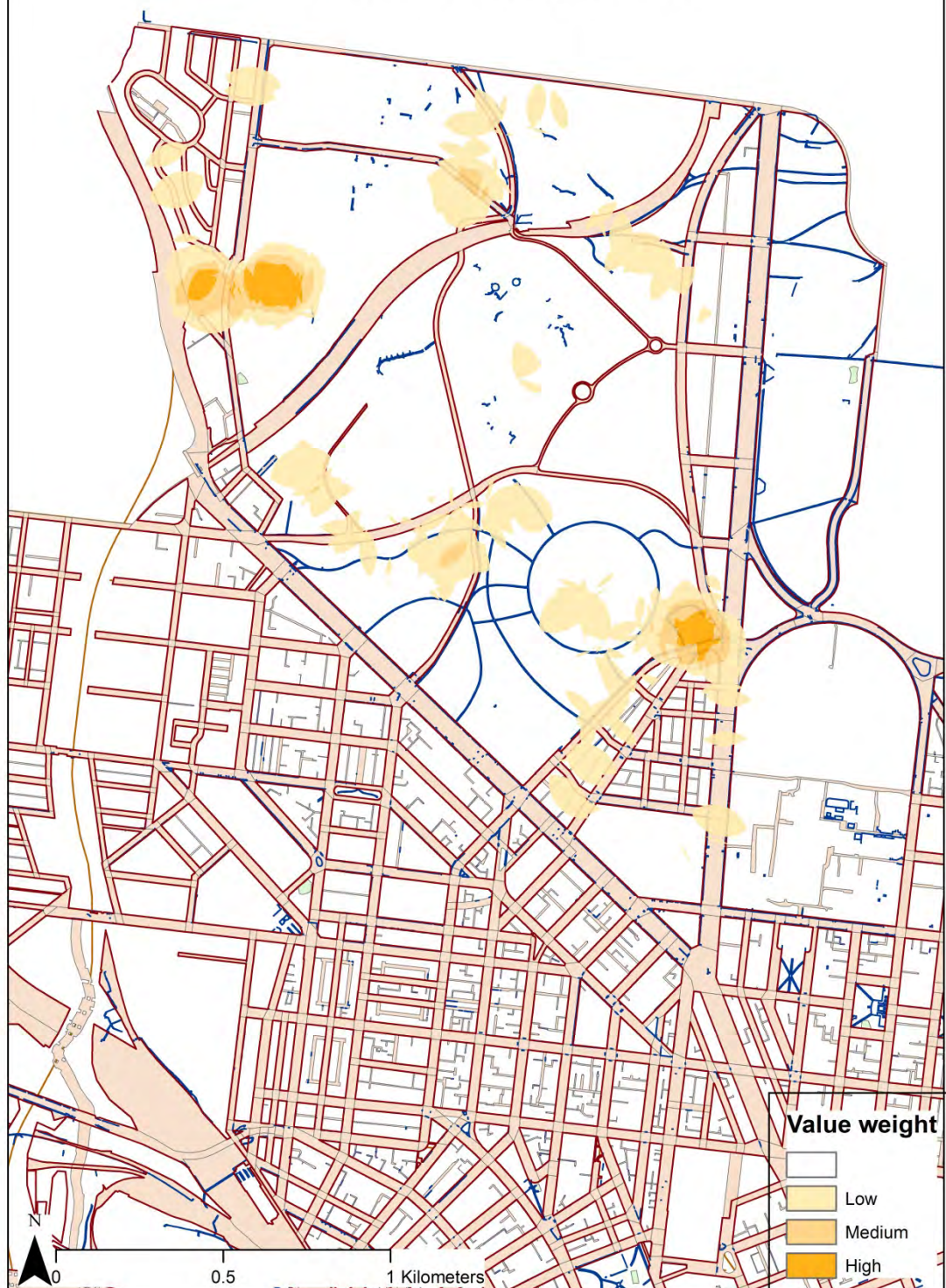
Appendix 1 – Values mapping outputs

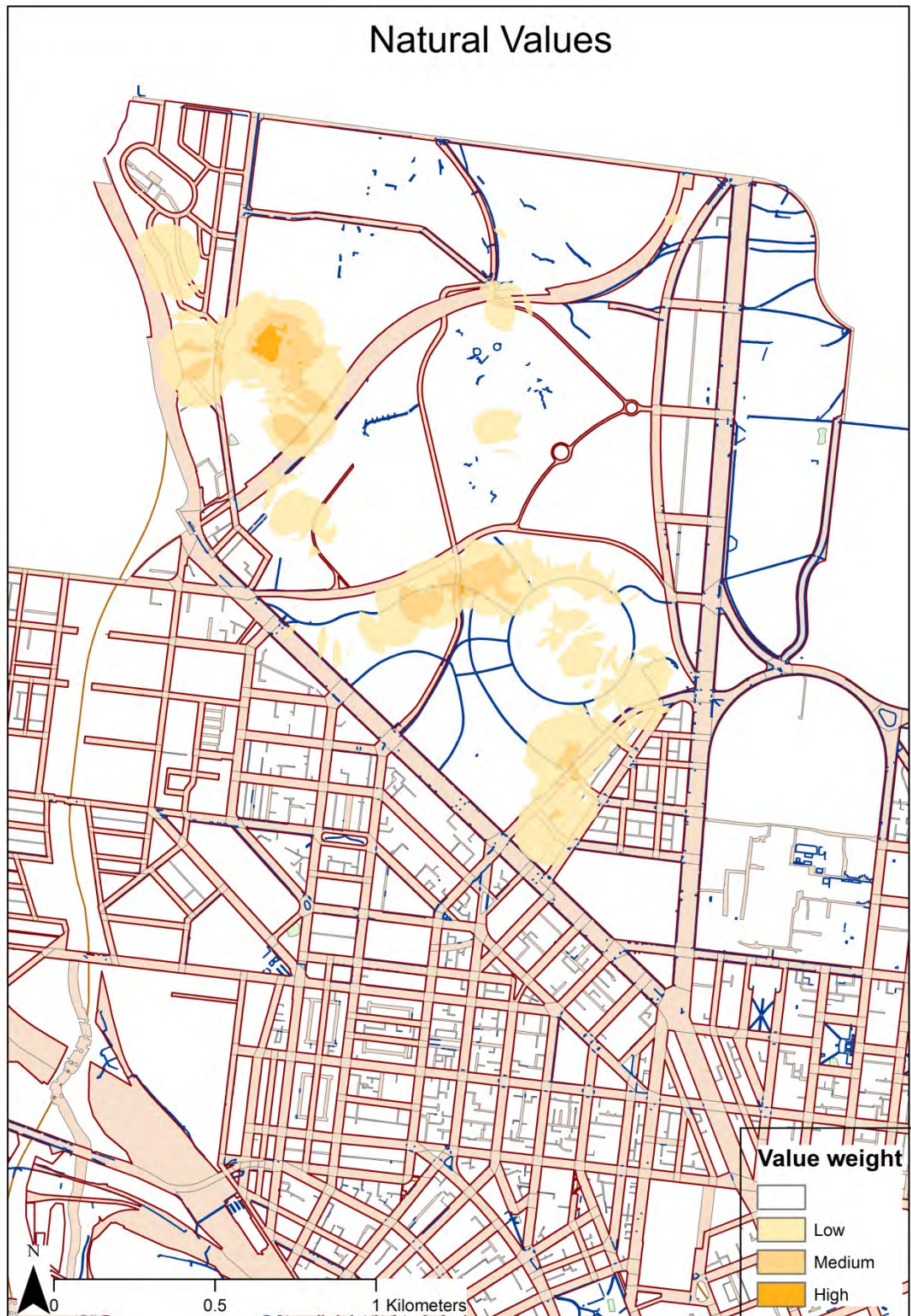


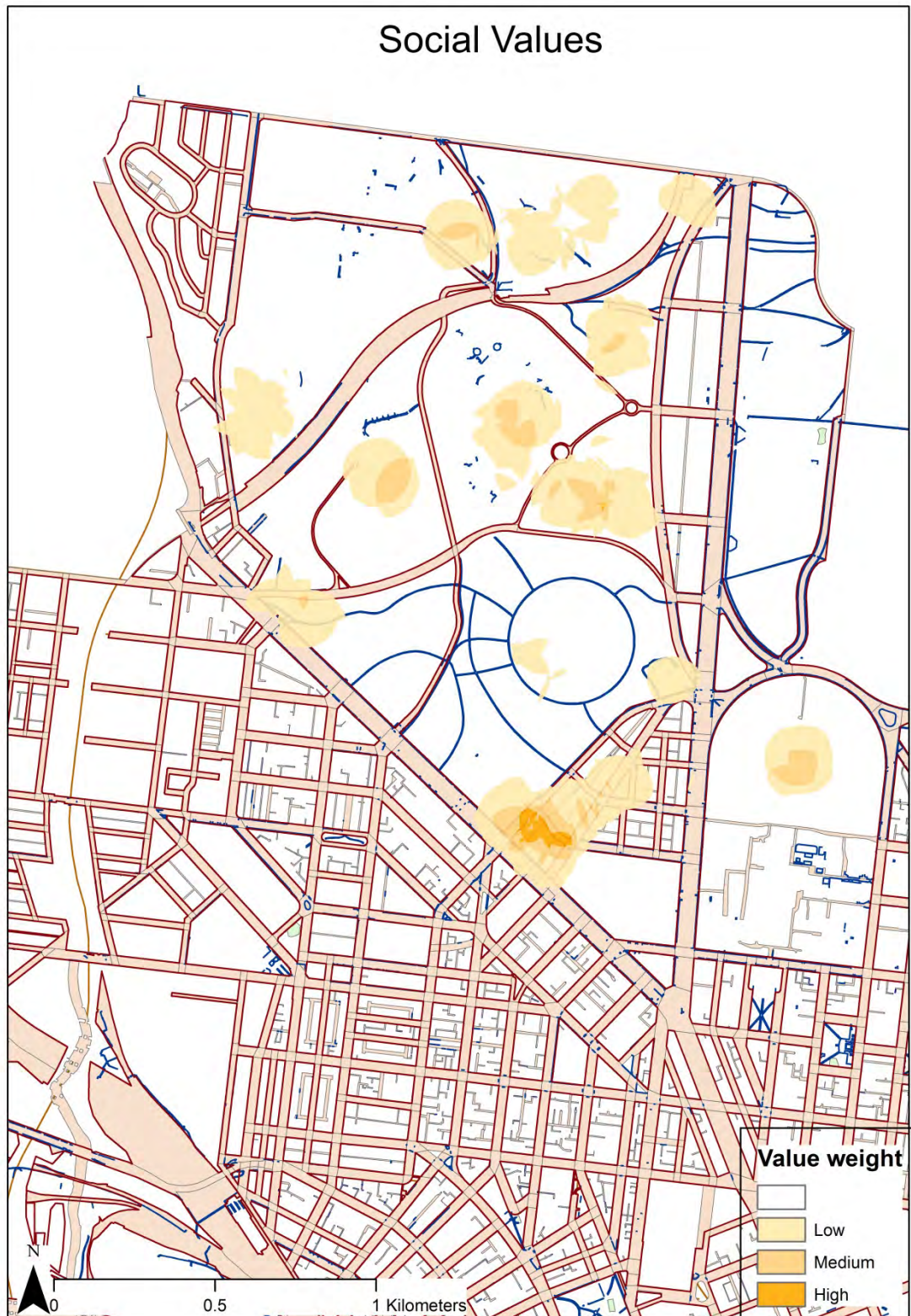
Culture and Heritage Values

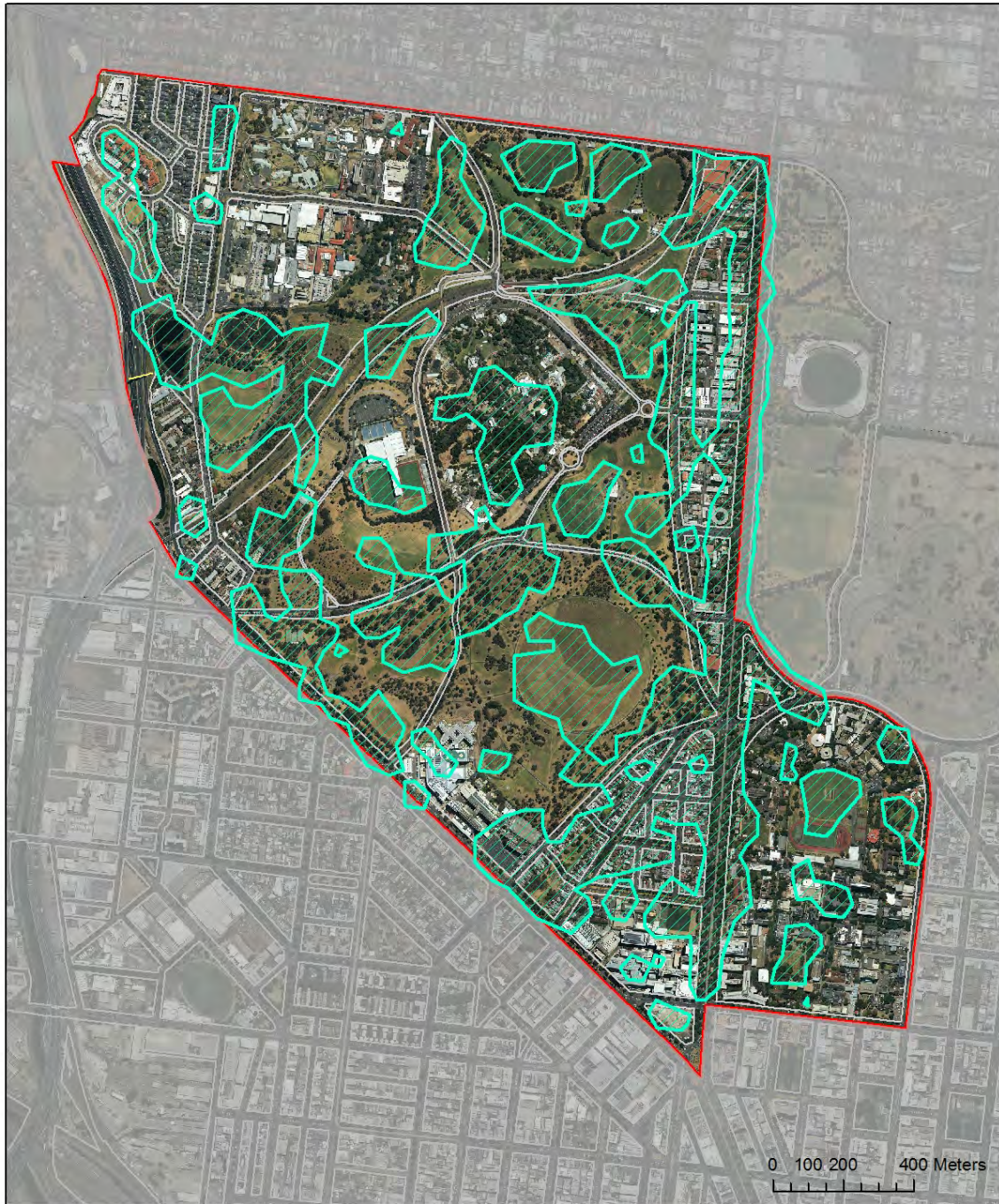


Life Sustaining Values









Parkville Precinct Plan

-  Places we Value
-  Parkville Precinct





Parkville Precinct Plan

- More Trees Needed
- Parkville Precinct

