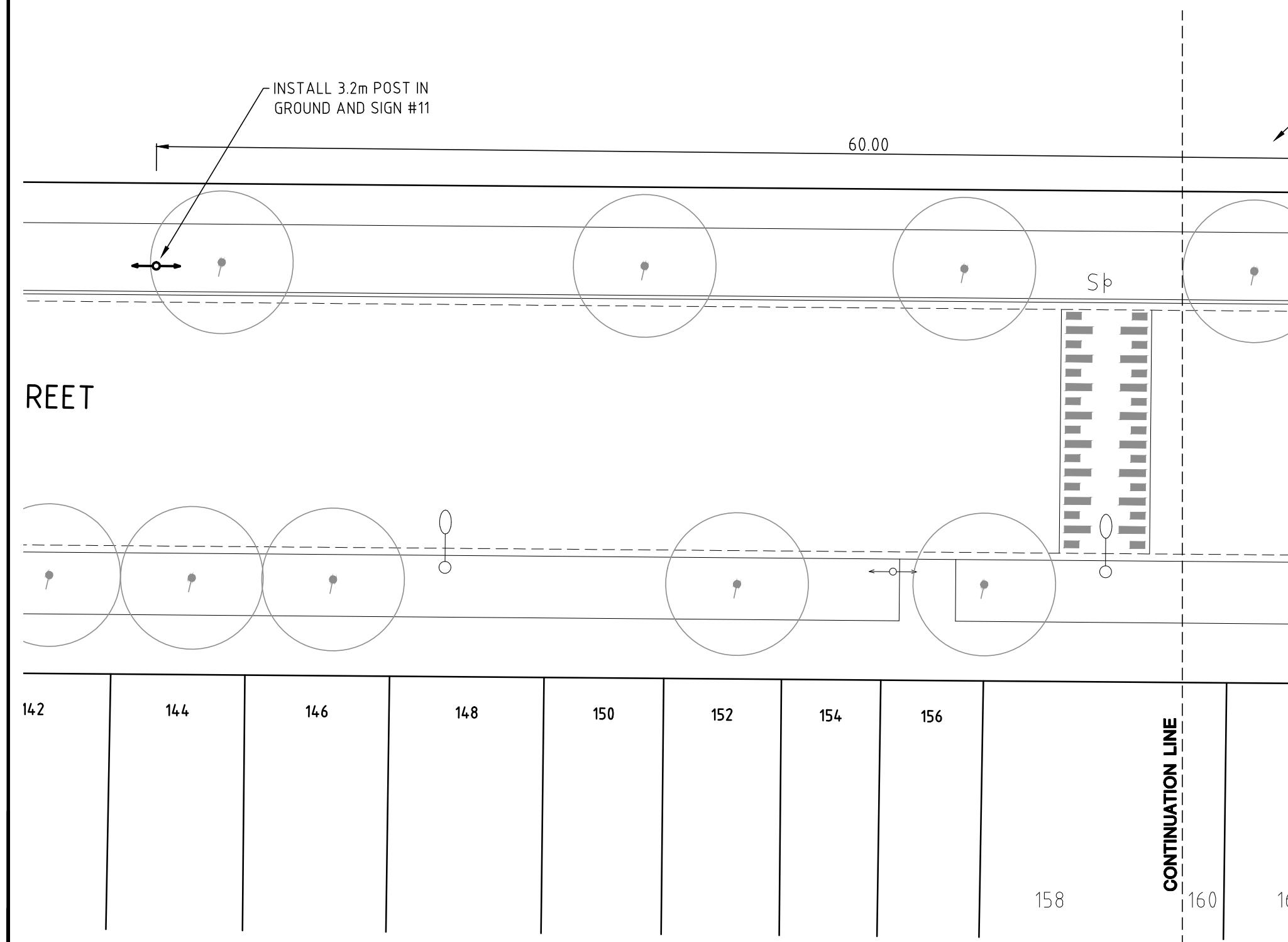


CONSTRUCTION PLAN




LEGEND

- CONSTRUCT NON-CBD ASPHALT FOOTPATH AS PER MCC STANDARD DRAWING IP 504.05B WITH:
  - 25mm OF SIZE 3mm HMA CAFE MIX
  - 35mm OF SIZE 14mm HMA
  - 50mm MIN. CLASS 2 CCR
- EXCAVATE 350mm DEPTH BELOW EXISTING PAVEMENT LEVELS AND CONSTRUCT PLANTATION WITH:
  - 300mm SANDY LOAM MCC APPROVED TOPSOIL
  - LANDSCAPE PLANTING & 50mm MULCH TOPPING BY OTHERS
- CONSTRUCT ASPHALT ACCESS RAMP AS PER AS1428.4 : 2002. RAMP GRADE 1 IN 8 MAX
- CONSTRUCT TREE PLOT WITH WITH 100 x 25mm TREATED TIMBER PLINTH AND COMPACTED GRANITE SAND COORDINATE RELOCATION OF TREE WITH PARKS SERVICES
- SUPPLY & SET 200mm BLUESTONE KERB & LIFT AND RESET PITCHER CHANNEL
- SUPPLY AND SET 200mm PRECAST CONCRETE KERB
- CONSTRUCT CAST IN-SITU CONCRETE KERB AND CHANNEL
- SUPPLY & SET SINGLE ROW BLUESTONE PITCHER EDGING
- INSTALL CERAMIC DIRECTIONAL TGSi's IN ACCORDANCE WITH AS1428.4:2002 (ASPHALT PAVEMENT)
- INSTALL CERAMIC DIRECTIONAL TGSi's IN ACCORDANCE WITH AS1428.4:2002 (ASPHALT PAVEMENT)
- PAINT NEW LINEMARKINGS IN LONG LIFE
- GRIND OFF REDUNDANT LINEMARKING
- INSTALL 150 DIA. WHITE CONCRETE FILLED BOLLARD REFER MCC STANDARD DRAWING 1P 505.11

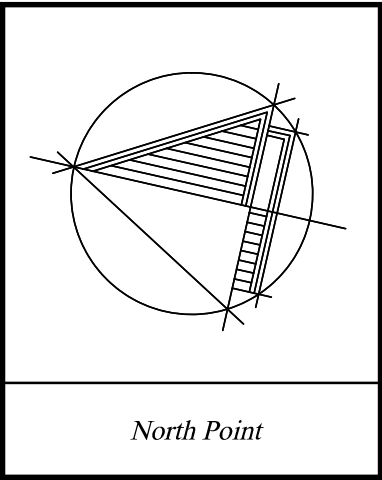
SIGN SCHEDULE

- #1A: W6-2A, 600x600
- #1B: W6-2A, 600x600
- #1C: W6-2A, 600x600
- #2: R3-1A, 600DIA
- #3: D4-1-2A, 450x450
- #4: W5-10A, 600x600
- #5: W8-2A, 600x400
- #6: 2P ONLY
- #7: TAXI ZONE, 2P ONLY
- #8: 2P, 7:30 - 6:30 MON-FRI, 7:30 - 12:30 SAT
- #9: 2P, 7:30 - 6:30 MON-FRI, 7:30 - 12:30 SAT, AREA B RESIDENT PERMIT EXCEPTED
- #10: 2P, 7:30 - 6:30 MON-FRI, 7:30 - 12:30 SAT, AREA B RESIDENT PERMIT EXCEPTED
- #11: 2P, 7:30 - 6:30 MON-FRI, 7:30 - 12:30 SAT, AREA B RESIDENT PERMIT EXCEPTED
- #12: 2P, MOTORCYCLES ONLY
- #13: P, MOTORCYCLES ONLY
- #14: PEDESTRIANS
- #15: PEDESTRIANS

WHERE WORKS DISRUPT OR REQUIRE THE REMOVAL OF KERBSIDE CAFES DURING CONSTRUCTION, CITYWIDE MUST ADVISE MCC STREET ACTIVITIES (CONTACT HELEN SEKOA 9658 9940) AT LEAST 4 WEEKS PRIOR TO THE COMMENCEMENT OF WORKS.

 <b>Cardno</b> Shaping the Future				ABN: 47 106 610 913 150 Oxford Street, Collingwood, VIC Australia 3066 Phone +61 3 8415 7777 Fax +61 3 8415 7788 Email: victoria@cardno.com.au Web: www.cardno.com/victoria			
Rev.	ESG & LANDSCAPING COMMENTS	MB	12/05/14	By	Date		
	PRELIMINARY ISSUE	MB	09/05/14				
Revision Details				By	Date		

CAD FILE	WK0269710	PROJECT NUMBER	13G0334N
DESIGNED BY	M. BRAJANOVSKI	CONCEPT DOCS NO.	-
DRAWN BY	M. BRAJANOVSKI	SURVEY REFERENCE	LIS BASE
CHECKED	P. MITROVSKI	SCALE	1:200
CHECKED DATE	9/05/14	DATUM	MGA94/AHD



ENGINEERING SERVICES	
APPROVED BY	
Principal Engineer	Group Manager
Date	Date

STATUS		PRELIMINARY	
JOB LOCATION		DRAWING NUMBER	
BELLAIR STREET BETWEEN MACAULAY RD & WIGHT ST FOOTPATH RECONSTRUCTION, PEDESTRIAN CROSSING & ZEBRA CROSSING & PLANTING INSTALLATION		WK0269710	
		NUMBER OF SHEETS	REVISION
		1 OF 2	B
		DOCS NUMBER	-



1. ALL DIMENSIONS AND RELEVANT SETOUT POINTS SHALL BE CONFIRMED AND VERIFIED BY THE CONTRACTOR BEFORE CONSTRUCTION IS COMMENCED. THE CONTRACTOR SHALL REPORT ANY DISCREPANCIES TO THE PROJECT MANAGER.
2. THESE DRAWINGS SHALL BE READ IN CONJUNCTION WITH THE SPECIFICATIONS AND DRAWINGS ISSUED BY THE PROJECT MANAGER AND WITH SUCH OTHER WRITTEN INSTRUCTIONS AS MAY BE ISSUED DURING THE COURSE OF THE CONTRACT.
3. THE CONTRACTOR SHALL CHECK ALL SERVICE LOCATIONS PRIOR TO COMMENCING WORK.
4. CARE MUST BE TAKEN WHEN EXCAVATING IN THE VICINITY OF SERVICES.
5. THE CONTRACTOR SHALL MAINTAIN THE WORK SITE IN A SAFE AND TRAFFICABLE CONDITION.
6. THE CONTRACTOR SHALL ERECT AND MAINTAIN ALL SHORING, PLANKING, AND STRUTTING, DEWATERING DEVICES, BARRICADES, SIGNS, LIGHTS, ETC NECESSARY TO KEEP WORKS IN A SAFE AND STABLE CONDITION AND FOR THE PROTECTION OF THE PUBLIC.
7. THE CONTRACTOR SHALL ENSURE THAT NO POLLUTED OR SEDIMENT LADEN RUNOFF ENTERS ANY DRAIN OR WATERCOURSE. THE CONTRACTOR SHALL ENSURE THAT PRECAUTIONS ARE TAKEN TO PREVENT EMISSION OF DUST, WHETHER FROM THE OPERATION OF CONSTRUCTION EQUIPMENT OR OTHERWISE.
8. SAWCUT AT ALL LIMIT OF WORKS EXISTING PAVEMENTS:  
ASPHALT FOOTPATH - SAWCUT 75mm DEPTH  
ASPHALT ROADWAY - SAWCUT 125mm DEPTH
9. MATCH NEW LINEMARKING INTO EXISTING, WHERE APPLICABLE.
10. ALL PAINT USED FOR PAVEMENT MARKING PROPOSES SHALL BE LONG LIFE WHITE IN COLOUR AND CONFORM WITH AS 4049.1-1992.
11. ALL SIGNS TO BE INSTALLED IN ACCORDANCE WITH AS1742.2
12. PRIOR TO EXCAVATION, THE CONTRACTOR SHALL ASCERTAIN THE LOCATION OF EXISTING UNDER GROUND SERVICES BY CALLING "DIAL BEFORE YOU DIG" NUMBER 1100. ANY DAMAGE TO THE UNDER GROUND SERVICES SHALL BE REPAIRED AT THE COST OF THE CONTRACTOR.
13. EXCAVATION WORK IN THE VICINITY OF TREES (WITH IN 4.5M RADIUS MEASURED FROM THE FACE OF THE TREE) SHALL ONLY BE CARRIED OUT WITH HAND HELD EQUIPMENT.
14. NO TREE ROOTS LOCATED WITHIN A 4.5M RADIUS (MEASURED FROM THE FACE OF THE TREE) SHALL BE CUT WITHOUT DIRECTION FROM THE PARKS & RECREATION GROUP.
15. THE CUTTING OF TREE ROOTS LARGER THAN 25MM DIAMETER LOCATED OUTSIDE A 4.5M RADIUS (MEASURE FROM THE FACE OF THE TREE) SHALL BE CARRIED OUT ONLY WHEN APPROVED BY AND UNDER THE DIRECT SUPERVISION OF THE RELEVANT STAFF FROM COUNCIL'S PARKS AND RECREATION GROUP.
16. TACTILE GROUND SURFACE INDICATORS ARE TO COMPLY WITH AS1428.4-2002

Figure 10 shows two cross-sectional views of a concrete slab and beam. The top view shows a slab with a depth of 200 mm and a beam with a depth of 500 mm. The bottom view shows a slab with a depth of 200 mm and a beam with a depth of 500 mm. The label "DETAIL A" is shown in both views.

The diagram illustrates a Watts Profile Hump, which is a cross-section of a road hump. Key features include:

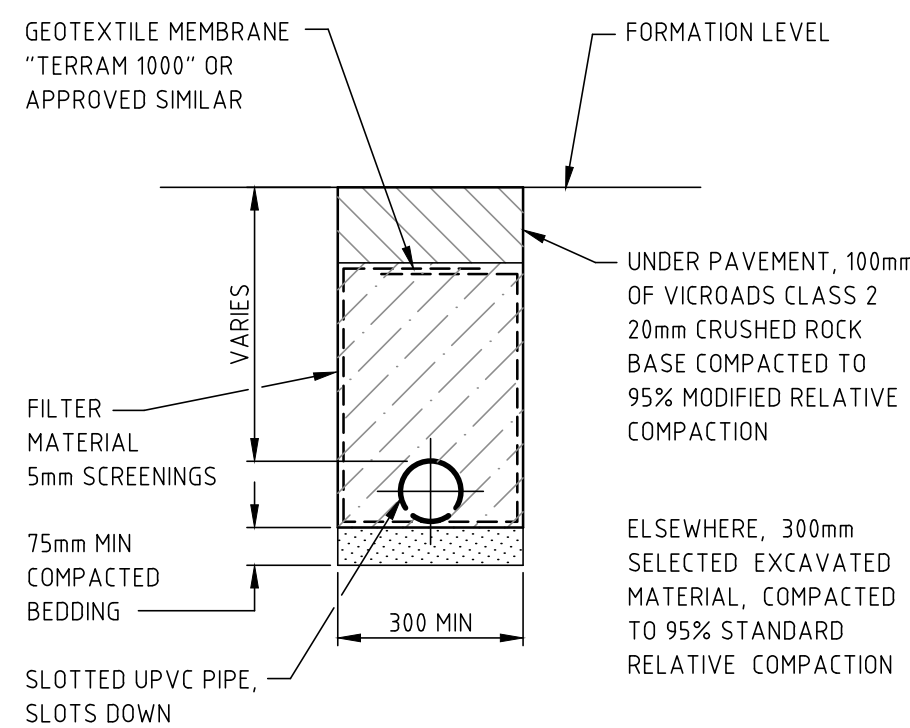
- WATTS PROFILE HUMPS**: Label pointing to the hump structure.
- CENTRELINE OF HUMPS**: A vertical dashed line indicating the center of the hump.
- BUILD UP WITH SIZE 10MM HMA**: Label pointing to the top layer of the hump.
- Dimensions**:
  - 3.60**: Total width of the hump in meters.
  - 1.80**: Distance from the centerline to the edge of the hump in meters.
  - l**: A variable distance from the centerline to a specific point on the hump.

Below the diagram is a table providing data for the hump profile:

l (m)	0	0.1	0.2	0.3	0.4	0.5	0.6	0.7	0.8	0.9	1.0	1.1	1.2	1.3	1.4	1.5	1.6	1.7	1.8
h (mm)	100	100	99	97	95	93	90	86	81	76	71	65	58	51	43	34	25	16	5

WATTS PROFILE SPEED HUMP  
SETOUT DETAIL  
NOT TO SCALE

WATTS PROFILE SPEED HUMP  
SETOUT DETAIL  
NOT TO SCALE



EXISTING ROADWAY

300mm SANDY LOAM MCC APPROVED TOPSOIL, SLOPE TOWARD CENTRE MULCH TOPPING BY OTHERS

EXCAVATE 100mm BELOW EXISTING ROADWAY LEVELS AND CONSTRUCT ASPHALT MEDIAN WITH:

- 25mm OF SIZE 7mm HMA
- 35mm OF SIZE 14mm HMA
- BUILD UP WITH CLASS 2 COMPACTED FCR

SET PRECAST EXPOSED AGGREGATE CONCRETE KERB ON 75mm THICK CONCRETE PAD.

100

175 TYP

EXISTING ROADWAY

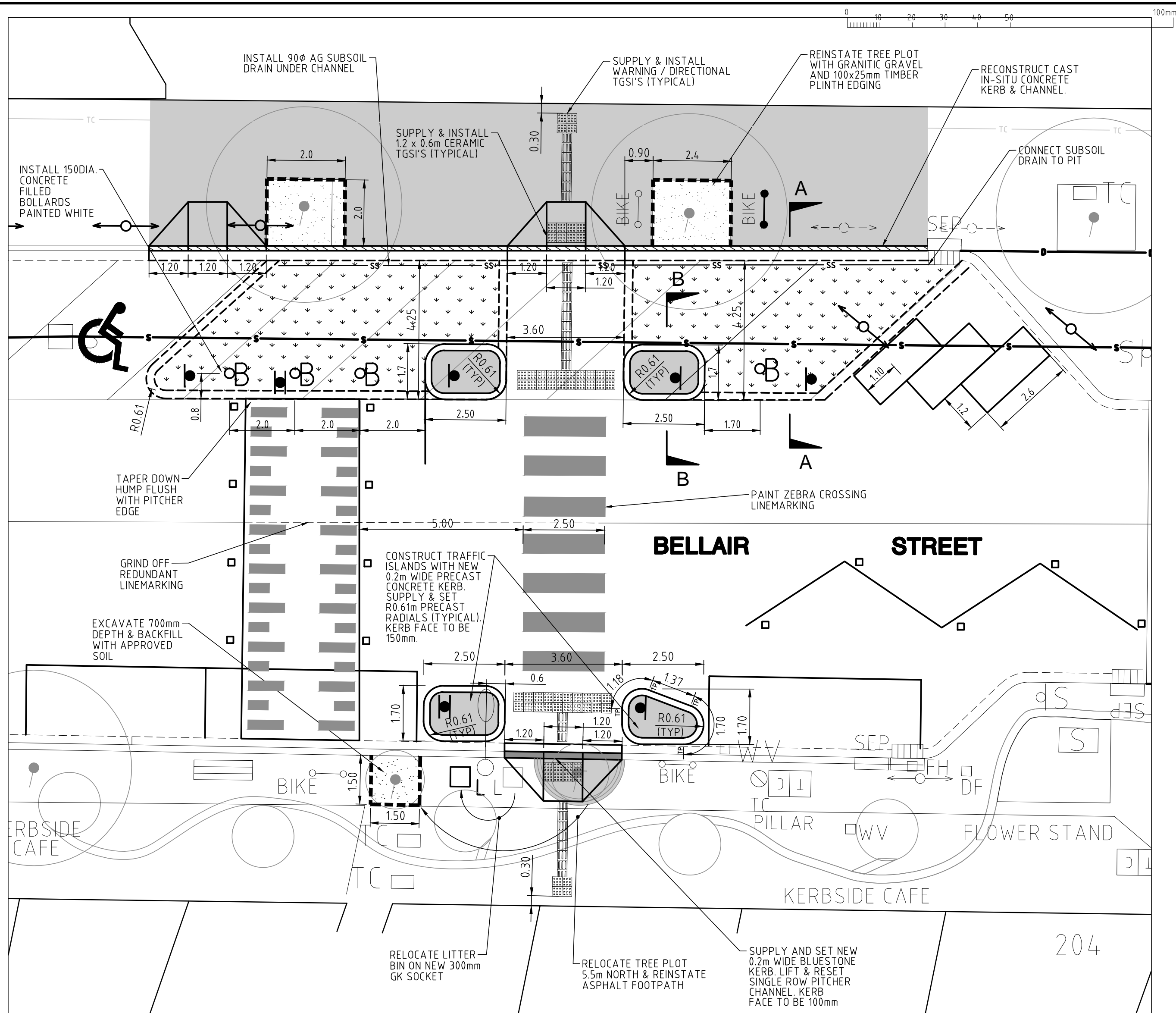
SAWCUT 125mm DEPTH

SIZE 10mm HMA REINSTATEMENT

SECTION B

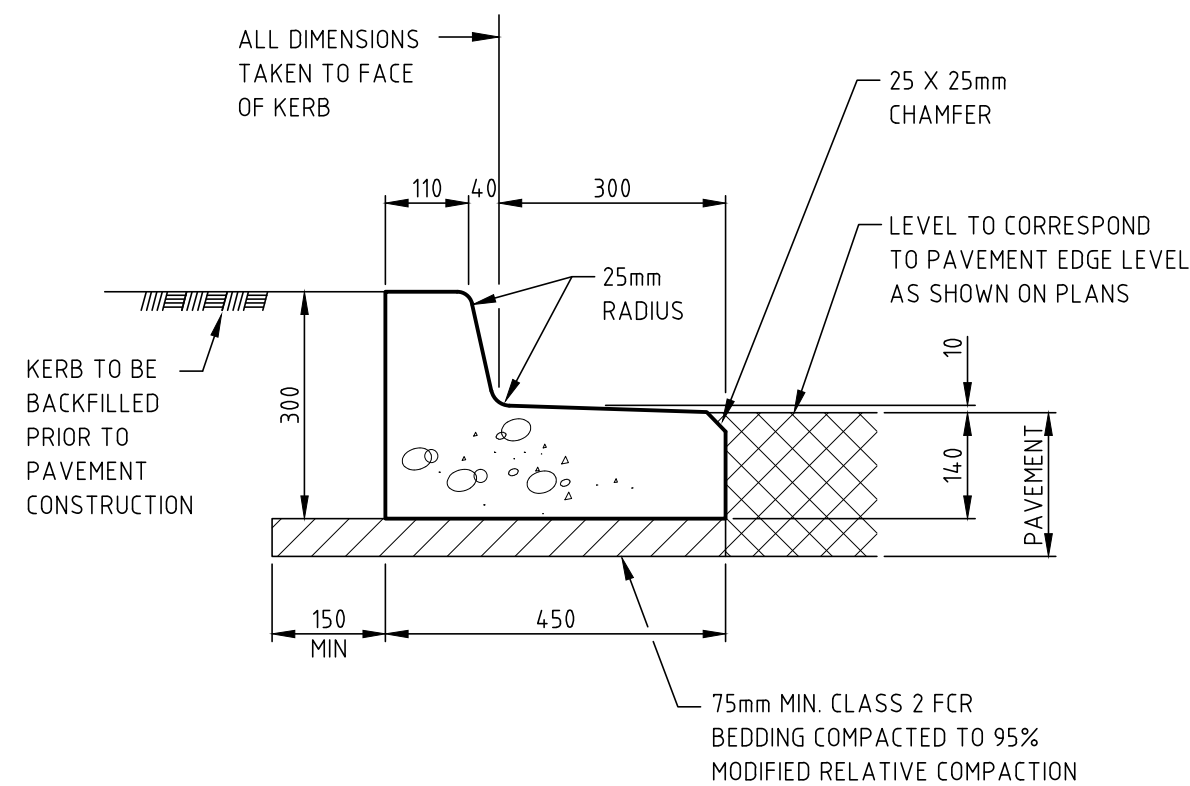
NOT TO SCALE

SECTION B  
NOT TO SCALE

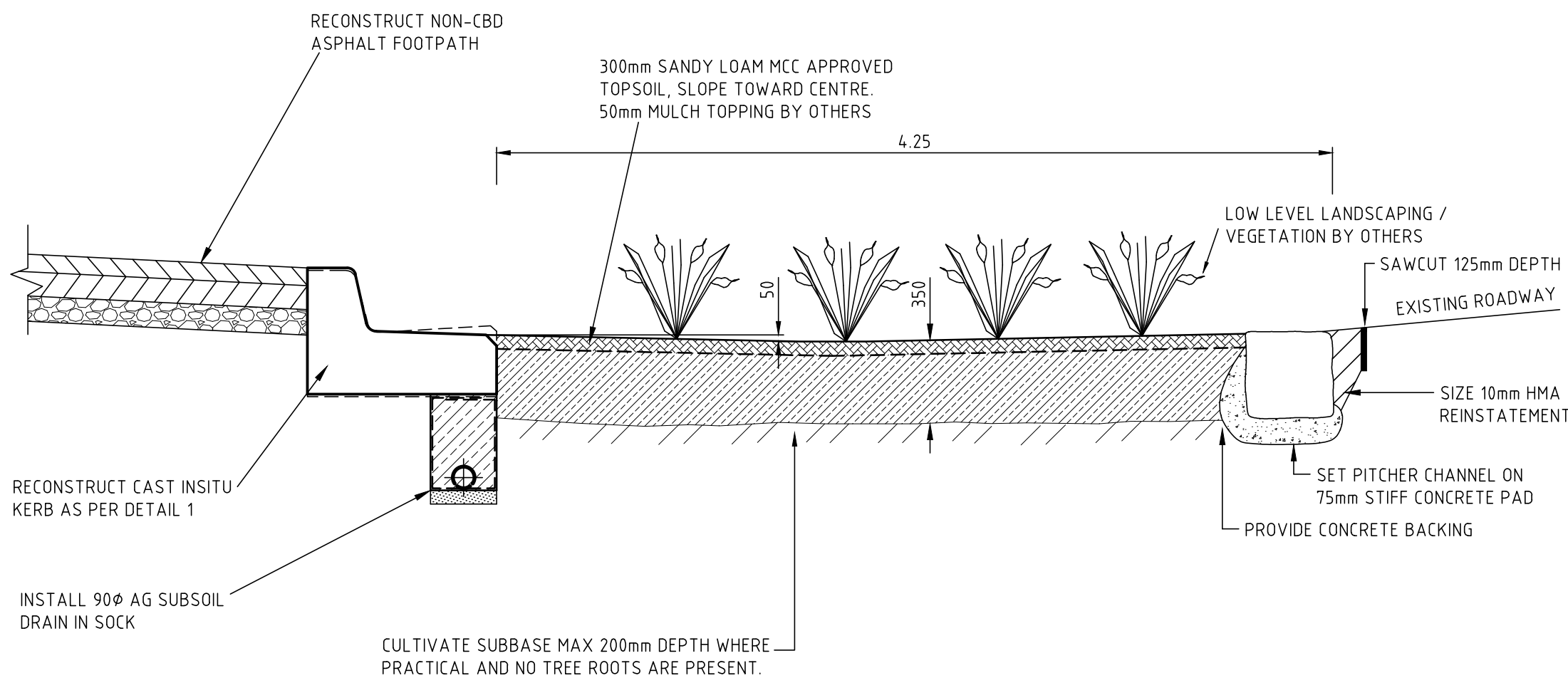


DETAIL A  
1:100


WHERE WORKS DISRUPT OR REQUIRE THE REMOVAL OF KERBSIDE CAFES DURING CONSTRUCTION, CITYWIDE MUST ADVISE MCC STREET ACTIVITIES (CONTACT: HELEN SEKO 9658 9940) AT LEAST 4 WEEKS PRIOR TO THE COMMENCEMENT OF WORKS.



DETAIL 1  
KERB AND TRAY (B3)  
SCALE 1:10



SECTION  
NOT TO SCALE

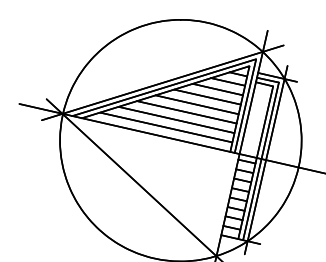


**Cardno**  
Shaping the Future

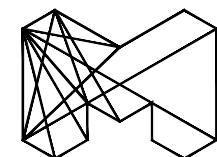
ABN: 47 106 610 913  
150 Oxford Street, Collingwood, VIC Australia 3066  
Phone +61 3 8415 7777 Fax +61 3 8415 7788  
Email: victoria@cardno.com.au  
Web: www.cardno.com/victoria

B	ESG & LANDSCAPING COMMENTS	MB	12/05/14
A	PRELIMINARY ISSUE	BM	09/05/14
Rev.	Revision Details	By	Date

<i>CAD FILE</i>	WK0269710	<i>PROJECT NUMBER</i>	13G0334N
<i>DESIGNED BY</i>	M. BRAJANOVSKI	<i>CONCEPT DOCS NO.</i>	-
<i>DRAWN BY</i>	M. BRAJANOVSKI	<i>SURVEY REFERENCE</i>	LIS BASE
<i>CHECKED</i>	P. MITROVSKI	<i>SCALE</i>	1:100
<i>CHECKED DATE</i>	9/05/14	<i>DATUM</i>	MGA94/AHD



*North Point*



**CITY OF  
MELBOURNE**

ENGINEERING SERVICES		STATUS		PRELIMINARY			
<div>APPROVED BY</div> <div><div>Principal Engineer</div><div>Group Manager</div></div> <div><div>Date</div><div>Date</div></div>		JOB LOCATION  BELLAIR STREET  BETWEEN MACAULAY RD & WIGHT ST  FOOTPATH RECONSTRUCTION, PEDESTRIAN CROSSING & ZEBRA CROSSING & PLANTING INSTALLATION		DRAWING NUMBER WK0269710			
				NUMBER OF SHEETS 2 OF 2		REVISION B	
				DOCS NUMBER -			