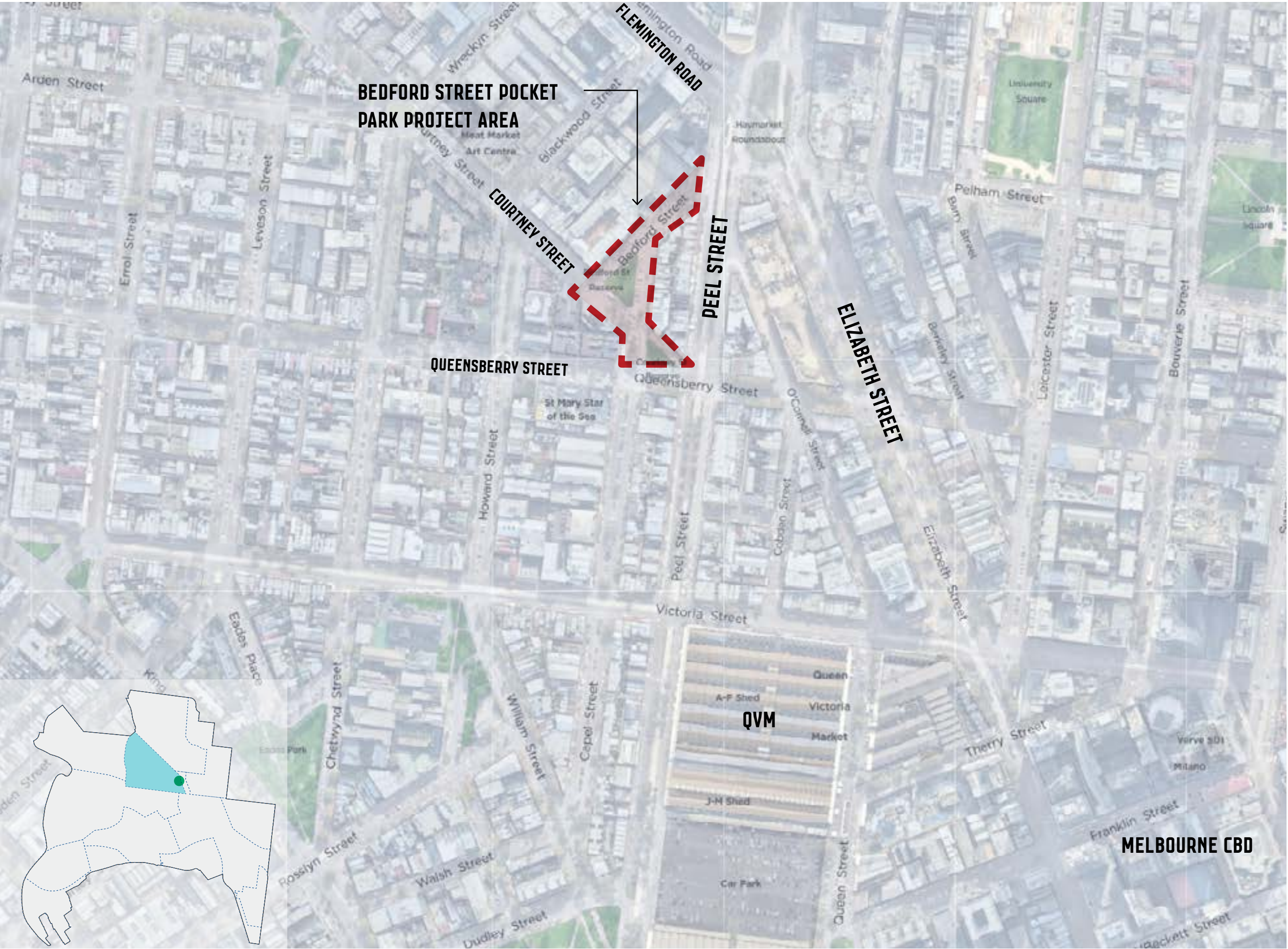


BEDFORD STREET POCKET PARK DRAFT CONCEPT PLAN AUGUST 2022



BEDFORD STREET POCKET PARK



BEDFORD STREET POCKET PARK

EXISTING CONDITIONS

Existing green spaces

- Bedford Street Reserve 1000m² (approx)
- Courtney Street Reserve 470m² (approx)
- Courtney/Capel Street Median 440m² (approx)



BEDFORD STREET POCKET PARK

OVERALL LANDSCAPE CONCEPT PLAN

Project objectives

- Provide an increase in green space (potentially up to 1500m²)
- Improve use of and access to existing small parks
- Improve local area cooling by increasing tree canopy cover by 40%
- Improve pedestrian safety by reducing road crossing distances
- Increase biodiversity through diverse and climate ready plantings
- Improve stormwater retention by increasing permeable surfaces



BEDFORD STREET POCKET PARK

ENLARGEMENT PLAN 1 - BEDFORD STREET LINEAR OPEN SPACE



BEDFORD STREET POCKET PARK

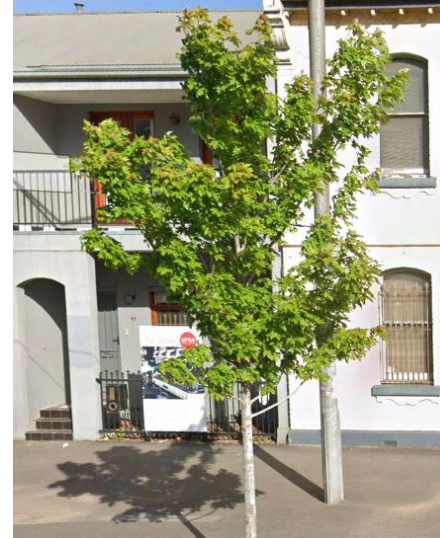
TREE PLANTING PALETTE - BEDFORD STREET LINEAR OPEN SPACE & STREET TREES



Pyrus ussuriensis (existing)
Manchurian Pear



Toona ciliata (existing)
Red Cedar



Acer x freemanii 'Jeffersred' (existing)
Freeman Maple



Fraxinus griffithii
Himalayan Ash



Brachychiton populneus x acerifolius
'Jerilderie Red'
Jerilderie Red



Eucalyptus caesia 'Silver Princess'
Gungurru



Brachychiton discolor
Lacebark Tree



Eucalyptus torquata
Coral Gum



Pistacia chinensis
Chinese Pistachio



Fraxinus velutina
Velvet Ash



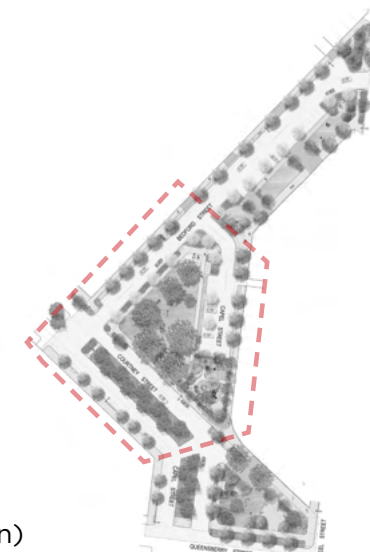
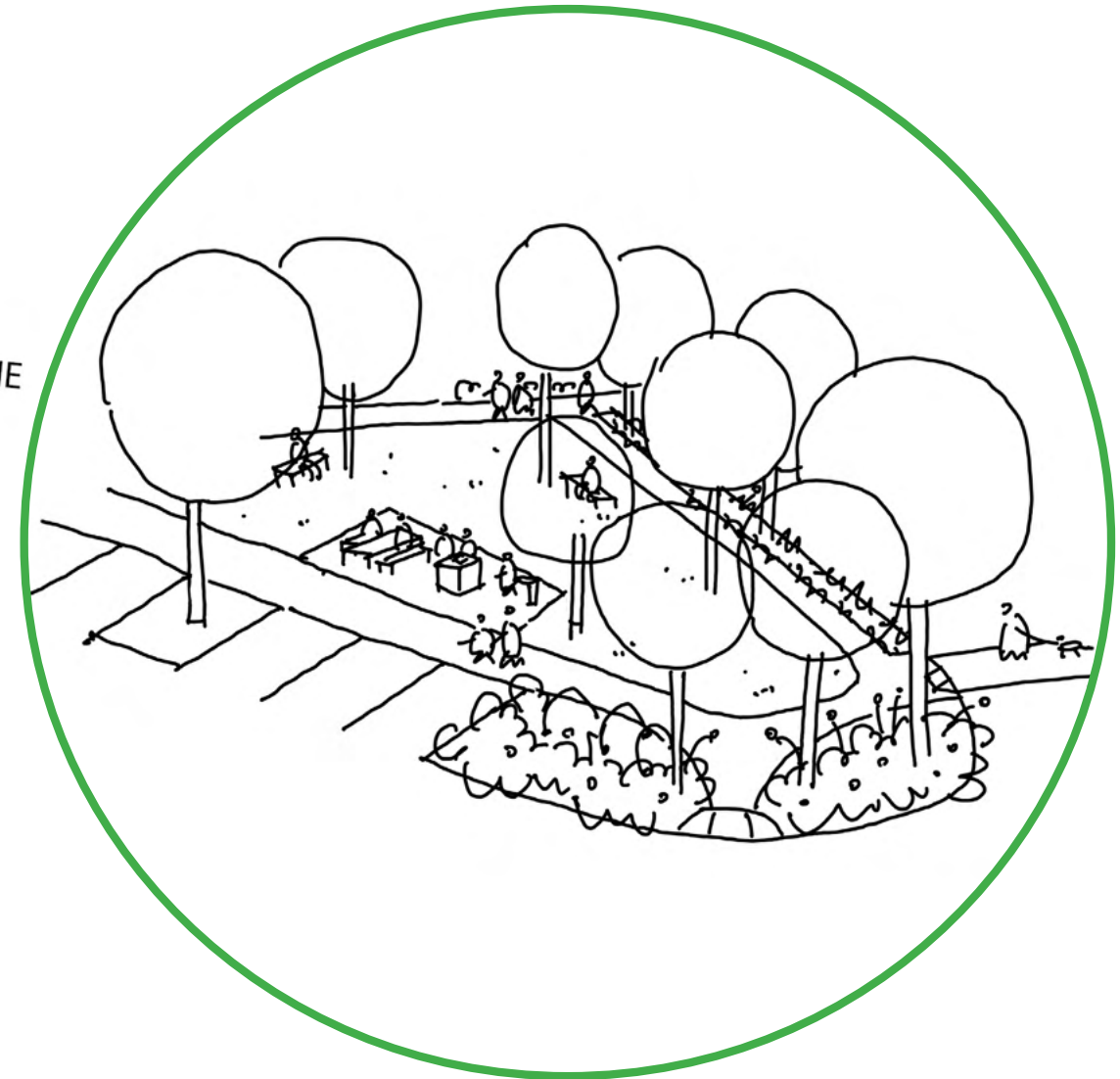
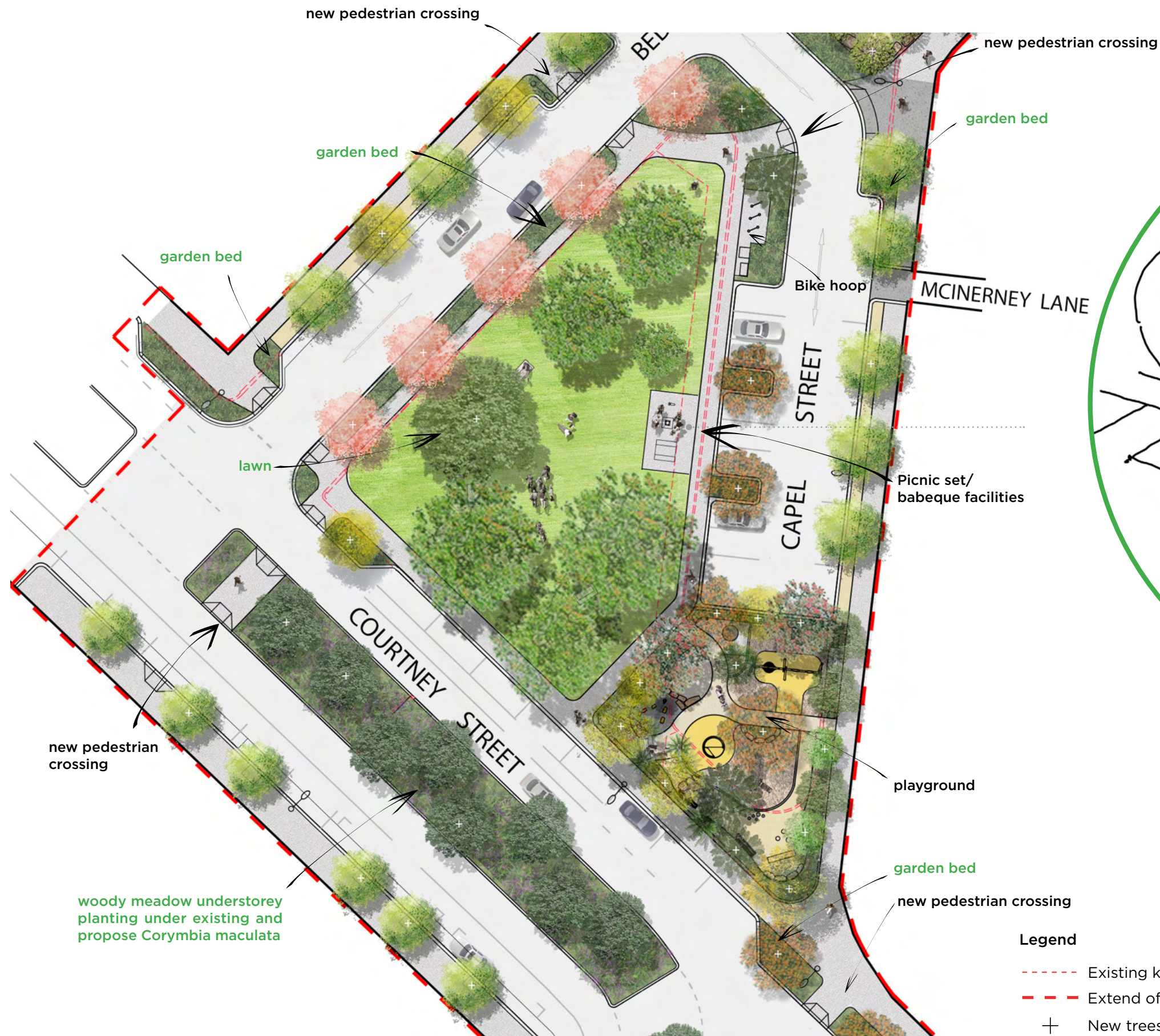
Araucaria heterophylla
Norfolk Island Pine



Banksia serrata
Saw-tooth Banksia

BEDFORD STREET POCKET PARK

ENLARGEMENT PLAN 2 - BEDFORD STREET RESERVE EXPANSION & COURTNEY STREET MEDIAN



Legend

- Existing kerb to be removed
- - - Extend of works
- + New trees (white crosses in plan)

BEDFORD STREET POCKET PARK

TREE PLANTING PALETTE - BEDFORD STREET RESERVE EXPANSION & COURTNEY STREET MEDIAN



Pyrus ussuriensis (existing)
Manchurian Pear



Ulmus x hollandica 'Vegeta' (existing)
Huntingdon Elm



Celtis australis (existing)
European Nettle Tree



Corymbia maculata (existing & propose)
Spotted Gum



Ginkgo biloba
Ginkgo



Araucaria heterophylla (existing & propose)
Norfolk Island Pine



Brachychiton rupestris
Queensland Bottle Tree



Brachychiton discolor
Lacebark Tree



Quercus acutissima
Sawtooth Oak



Quercus phellos
Willow Oak



Sapium sebiferum
Chinese Tallow



Fraxinus velutina
Velvet Ash



Taxodium mucronatum
Montezuma Cypress



Gleditsia triacanthos 'Sunburst'
Golden Honeylocust



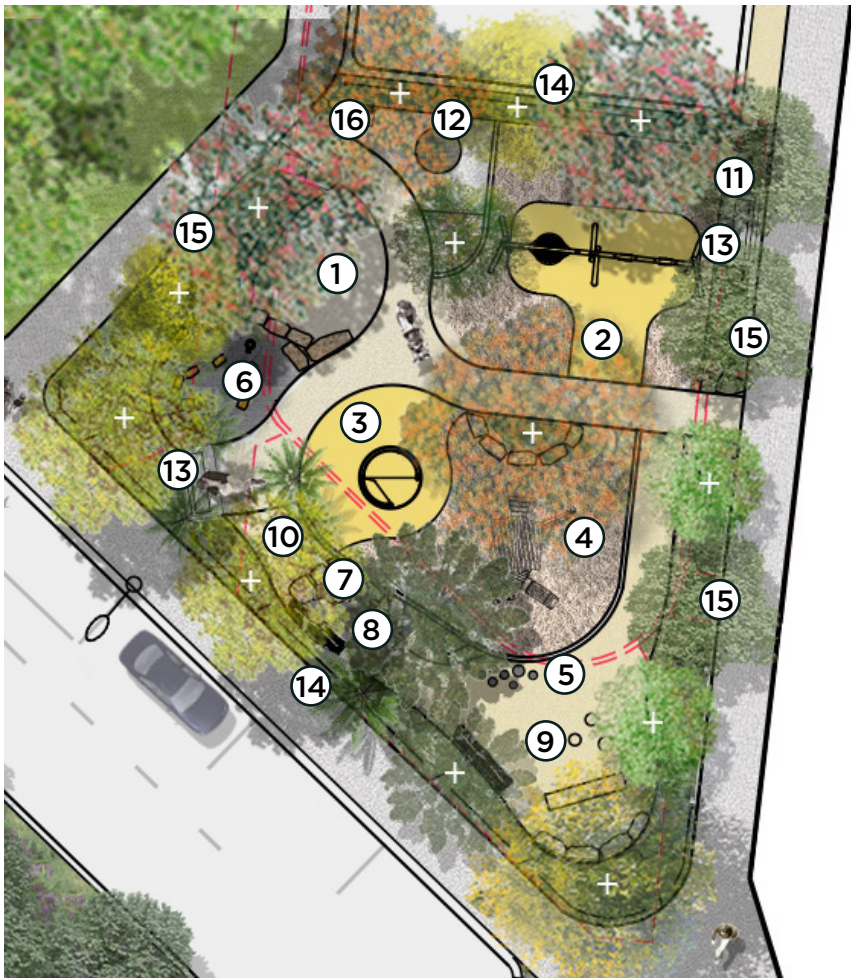
Pyrus calleryana
Callery Pear



Elaeocarpus reticulatus 'Prima Donna'
Blueberry Ash

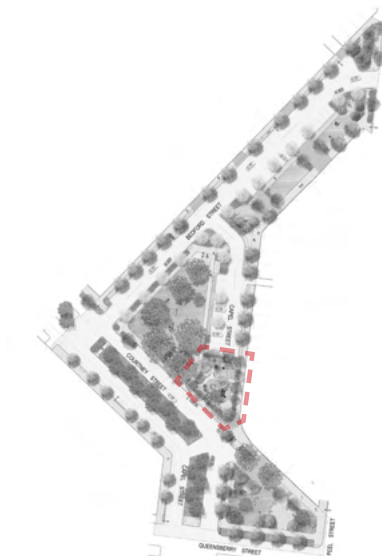
BEDFORD STREET POCKET PARK

PLAY EQUIPMENTS, STREET FURNITURES & PRECEDENTS

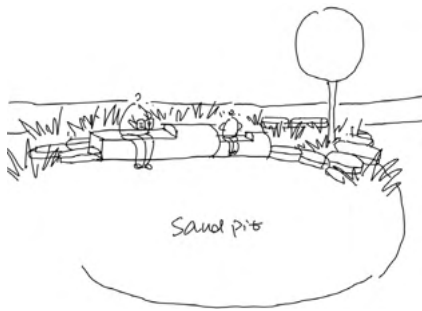


Legend

- Existing kerb to be removed
- + New trees (white crosses in plan)



① Sandpit with timber log seat



② Swing area



③ Carousel (wheelchair accessible)



④ Cubby house



⑤ Logs



⑥ Water play pump



Surface
River pebbles



⑦ Footprint fossil



⑧ Animal fossil



⑨ Dinosaur eggs-stone



⑩ Nature/Discovery play area



⑪ Stepping stone



⑫ Platform seat



⑬ Park seat



⑭ Chainlink fence



⑮ Hoop fence



⑯ Drinking fountain



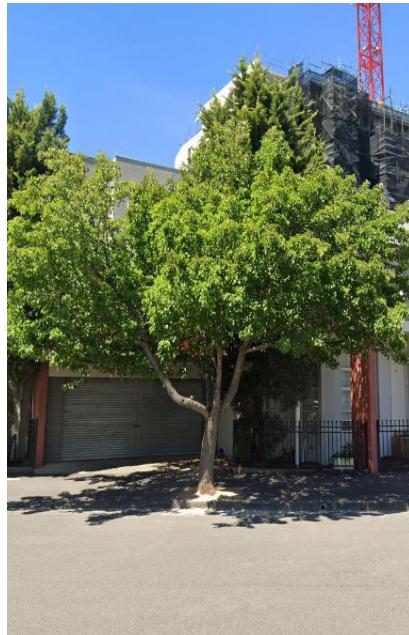
BEDFORD STREET POCKET PARK

ENLARGEMENT PLAN 4 - COURTNEY STREET RESERVE EXPANSION & CAPEL STREET MEDIAN



BEDFORD STREET POCKET PARK

TREE PLANTING PALETTE - COURTNEY STREET RESERVE EXPANSION & CAPEL STREET MEDIAN



Pyrus ussuriensis (existing)
Manchurian Pear



Corymbia maculata (existing)
Spotted Gum



Ulmus x hollandica 'Vegeta' (existing)
Huntingdon Elm



Araucaria cunninghamii (existing)
Hoop Pine



Ficus macrophylla (existing)
Moreton Bay Fig



Celtis sinensis
European Nettle tree



Elaeocarpus reticulatus 'Prima Donna'
Blueberry Ash



Quercus acutissima
Sawtooth Oak



Brachychiton acerifolius
Illawarra Flame Tree



Jacaranda mimosifolia
Jacaranda



Grevillea robusta
Southern Silky Oak