

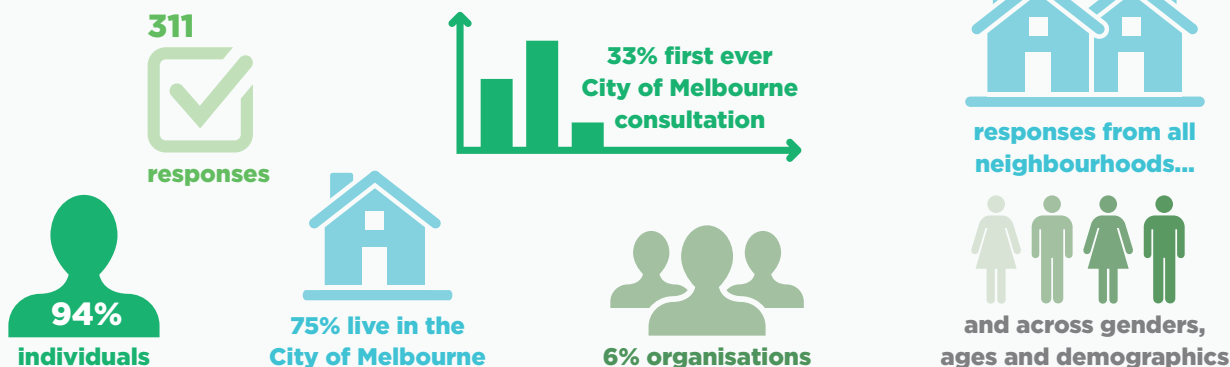
POWER MELBOURNE

Neighbourhood battery community consultation

The Power Melbourne project will install a network of neighbourhood batteries around the city. The batteries will be linked to a retail electricity plan to help renters, people living in apartments, and those running small businesses access more affordable renewable electricity.

From 26 September to 4 November, 2022 we ran a survey on **Participate Melbourne** to ask our community what they think about neighbourhood batteries and how we can make it easy to switch energy bills to a Power Melbourne plan.

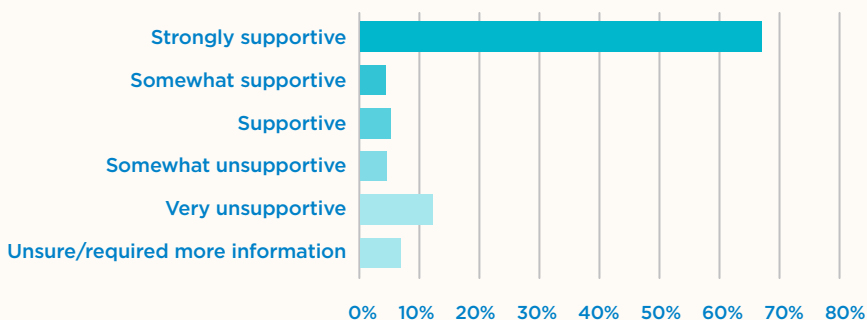
Who we heard from



What we heard

Support for local neighbourhood batteries

How supportive people would be of a neighbourhood battery in their area.



89% agree

neighbourhood batteries are an important part of the solution to transitioning to **more renewable energy**



Our community...

cares about ♥

- Taking visible, rapid climate action
- Renewable energy access
- Reducing cost of living for low income residents

"I think it's good for people in the city who can't install panels on their roof or a battery in the garage to be able to take action as a community."

- Docklands resident

is concerned about ♥

- Uninterrupted reliable supply of green power
- The necessity of Council investing in renewables
- Long term value for money

"Is it reliable affordable and available and really necessary?"

- East Melbourne business owner

wants more info about ♥

- Safety
- Noise and appearance
- Whole of life environmental impact

"I am supportive in principle but need much more information"

- South Yarra resident

What we heard

Support for proposed battery locations

More than 99% of responses supported the five proposed locations at City of Melbourne properties. Library at the Dock, Boyd Community Hub, Council House 2, Kensington Recreation Centre and Queen Victoria Market are locations under consideration.

“Great idea to start with council buildings like these. From here it would be great to see them expanded to areas with public housing and lots of apartment buildings.”

- Kensington resident



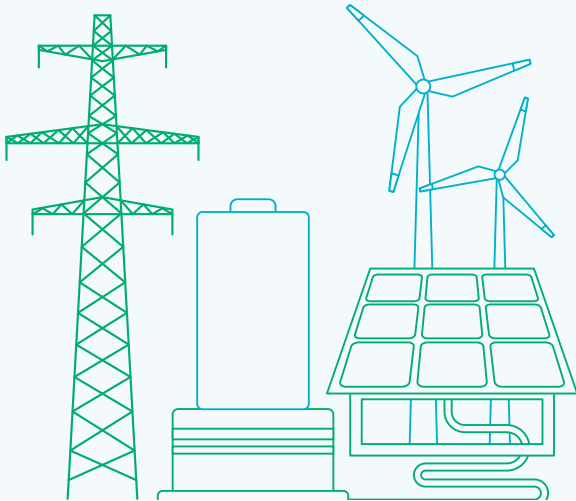
What we heard

Switching to Power Melbourne energy

What matters most to people when considering switching electricity provider to a renewable energy plan linked to neighbourhood batteries

1. **Price:** At least as cheap or cheaper compared to other green plans
2. **Transparency:** Guaranteed 100% renewable energy
3. **Confidence:** Reliable, stable renewable power for my home or business
4. **Equity:** It allows everyone to access renewable energy whether or not they have rooftop solar
5. **Trust:** In Council, and in Council's chosen retail energy partner
6. **Ease:** Simple to switch, great customer service

100% Renewables by 2030



What's next

Community feedback provided in this survey has helped us **understand priority locations** for neighbourhood batteries and will **inform our partnership** with an energy provider.

Respondents had questions about neighbourhood batteries and how the Power Melbourne model will work.

We'll keep the website updated to address these questions and provide more information during future phases of community engagement.

The next phase of engagement will include **place-based neighbourhood conversations** to further identify battery host sites in consultation with community. To learn more or get involved sign up at participate.melbourne.vic.gov.au/power-melbourne



CITY OF MELBOURNE