

CONCEPT DESIGN



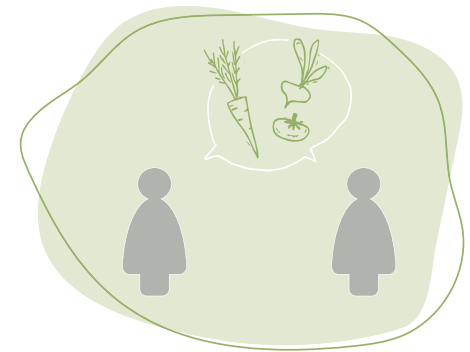
DESIGN PRINCIPLES



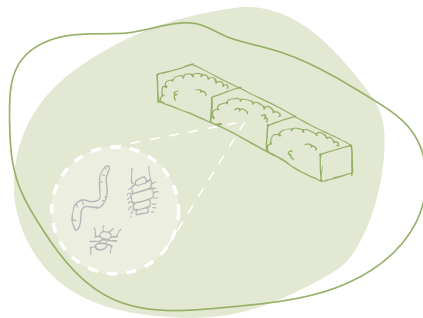
Gardening for all needs
and abilities



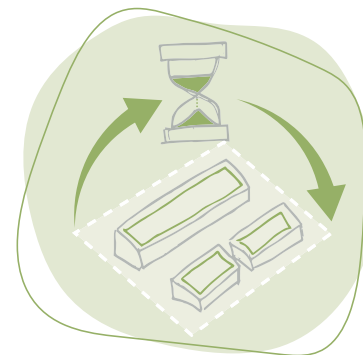
Engages the
neighbourhood



Sharing gardening
knowledge

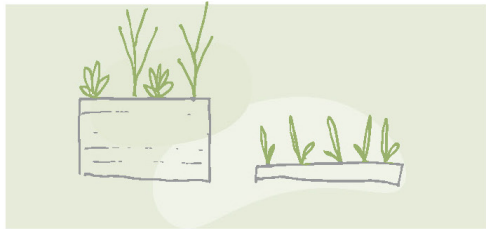


Circular economy



Flexible and robust design

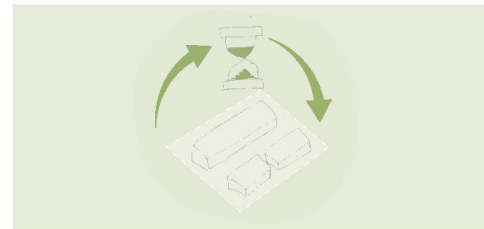
GARDEN ELEMENTS



Different Plot Heights



Vertical Gardening



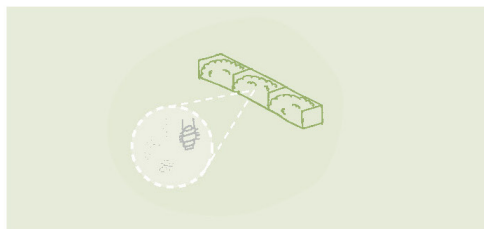
Durable Materials



A Place to Share Produce



Different Sized Plots



Centralised Compost



Seating



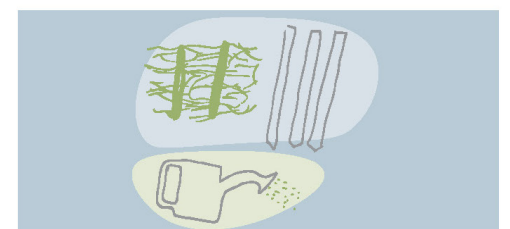
Shelter



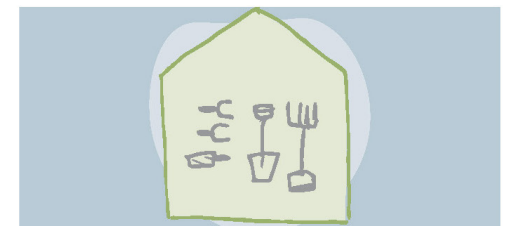
Efficient Irrigation



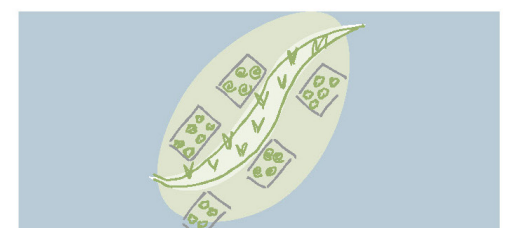
Affordable Materials and Construction



Communal Resources

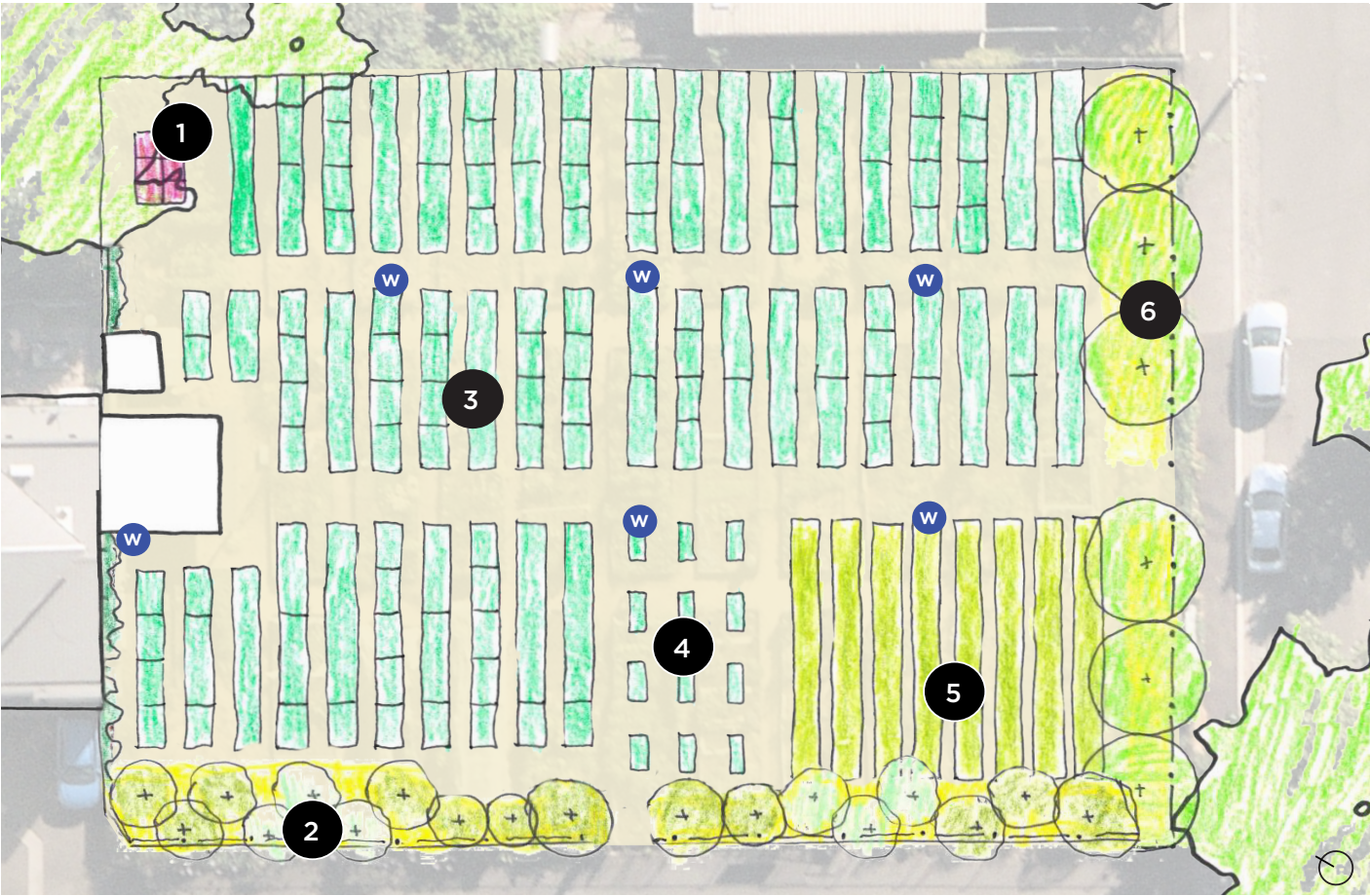


Tool Shed



Communal Garden

OPTION 1 KENSINGTON COMMUNITY GARDEN



- 1.** Communal vermin proof composting bay, increases efficiency and centralises resource
- 2.** Small productive trees along Cornish Lane
- 3.** 80 S, 27 M and 14 L plots, dispersed amongst the gardens. To be constructed from durable, robust materials
- 4.** Universally accessible garden plots, 1.2m x .75m x .75m (L x W x H) Spaced to allow 360 degree access by wheelchair
- 5.** Communal plots. Approximately 1.2m x 11m
- 6.** Large productive trees along Westbourne Grove


The division of plots allows for more community members to join the garden and reap the benefits of connecting with the garden.


Individual plots are spaced 0.8m apart, allowing for wheelbarrows to easily be manoeuvred through the space.


The tool shed and shelter remain in place at the rear of the garden.


A border of fruit trees with productive under-storey create broad street appeal for the new and improved Kensington Community Gardens. There are generous central N-S and E-W axis for circulation.


Element	Number of Plots
Communal plots	8 + Perimeter
Individual plots	121
Large (8m x 1.2m)	14
Medium (4m x 1.2m)	27
Small (2m x 1.2m)	80


- 


Communal plot (11m x 1.2m)
- 


Small plot
- 


Medium plot
- 


Large plot
- 


Communal pollinator/ productive edge eg. Herbs and flowers
- 


Large productive fruit tree
- 

Small productive tree
- 

Communal compost
- 

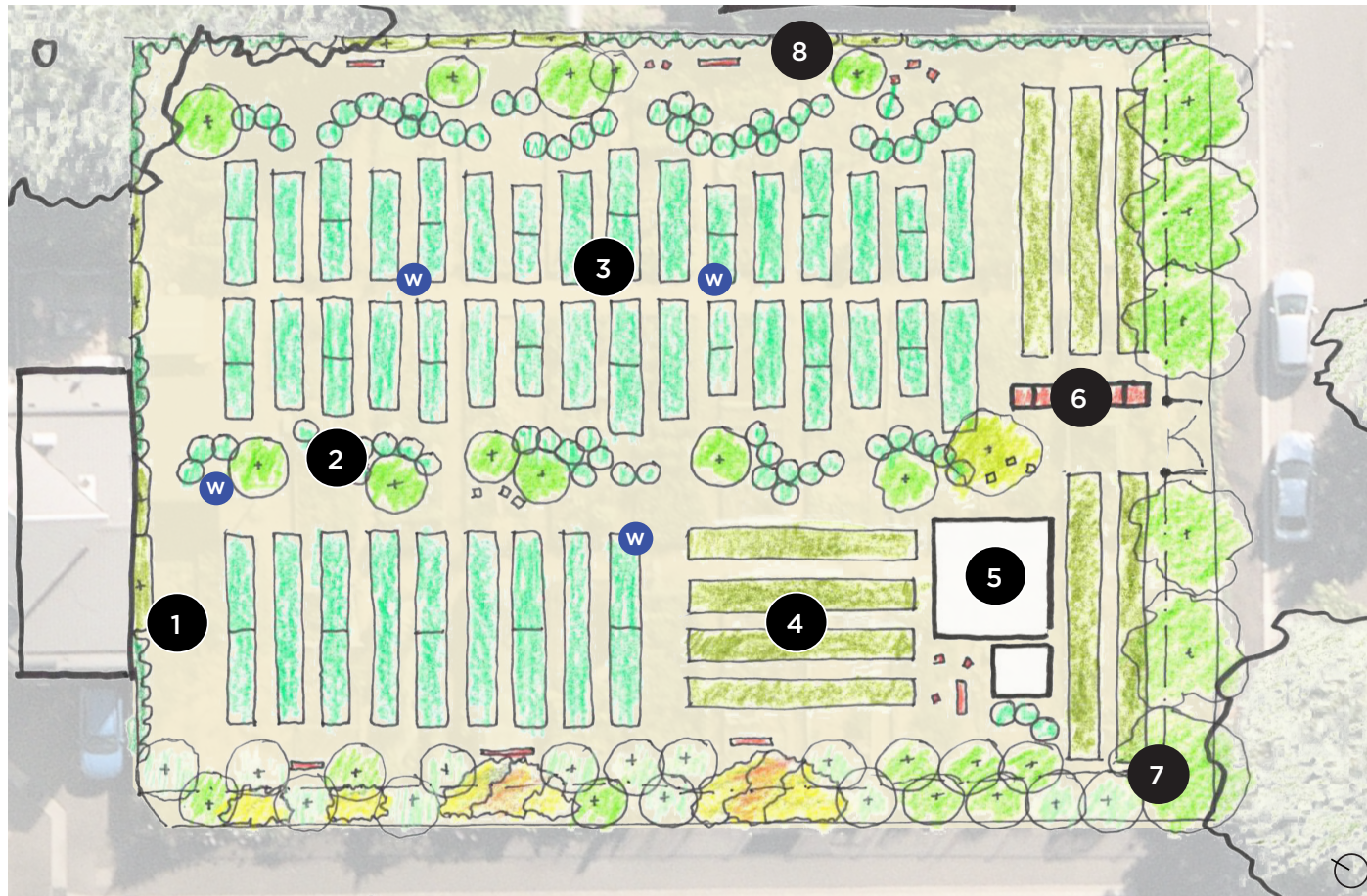
Existing shelter
- 

Existing tool shed
- 

Seating
- 

Water outlet

OPTION 2 KENSINGTON COMMUNITY GARDEN



1. Circulation space around the edge of the garden, makes it easier to access plots, and move through the site

2. 66 Micro Plots allow for raised gardening on an accessible surface

3. 31 S, 28 M and 5 L plots dispersed

4. Communal plots. Approximately 1.2m x 11m

5. Shelter moved to street corner to create a more inviting and usable space. Sense of welcome into the garden

Communal workshop area with good access to sun and tree shade

6. Communal vermin proof composting bay, increases efficiency and centralises resource. Located close to micro and communal plots

7. Large productive trees along Westbourne Grove

8. Perimeter planting such as climbing vines and espaliered fruit trees

This garden features raised micro plots. Made from recycled 1m wide concrete drain pipe and cut to a range of different heights. This allows for gardeners of all abilities to join in on the action.

The shelter and tool shed are relocated to the street frontage foregrounding the role of this space as a community garden.

The circulation around the perimeter of the garden connects the space and allows for accessibility to all gardens with ease of movement throughout. Main paths are 2m wide and paths between beds are 0.8m wide.

Element	Number of Plots
Communal plots	9 + Perimeter
Individual plots	130
Large (8m x 1.2m)	5
Medium (4-5.5m x 1.2m)	28
Small (2-2.75m - 1.2m)	31
Micro (D=1m)	66

