

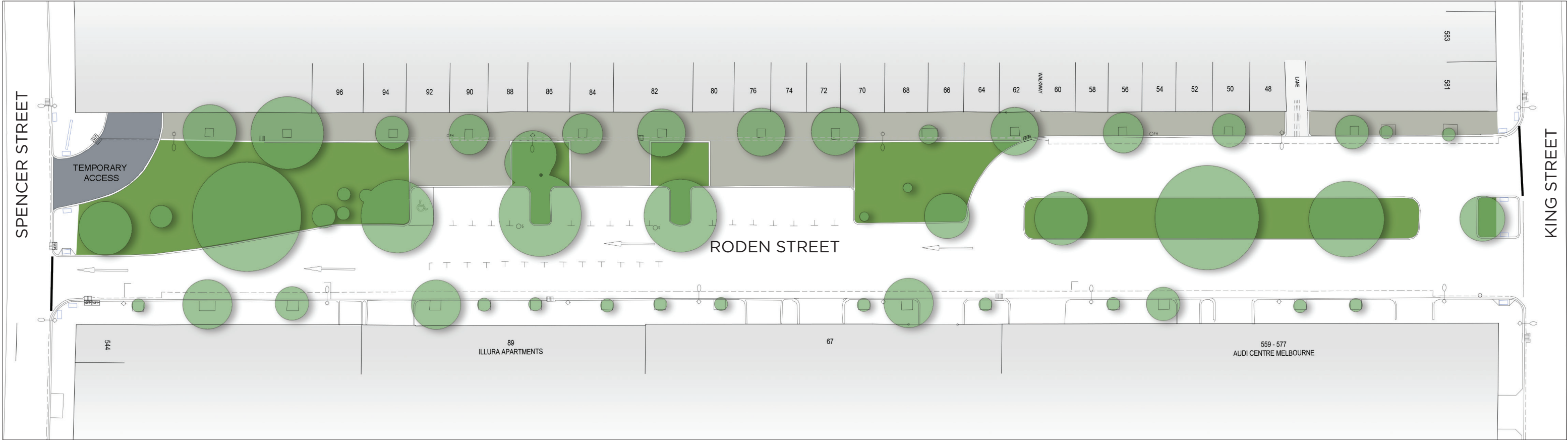
FINAL CONCEPT

GREENING RODEN STREET PROPOSAL

WEST MELBOURNE

EXISTING CONDITIONS

RODEN STREET, WEST MELBOURNE



LEGEND

- Existing tree
- Existing pavers
- Lawn

BACKGROUND

In line with our Open Space Strategy, Urban Forest Strategy, and West Melbourne Structure Plan, we're committed to increasing open space and tree canopy cover across the city, to help adapt to climate change, mitigate the urban heat-island effect, and create healthier and more enjoyable landscapes for our community.

The City of Melbourne is proposing to improve the look, environment, and liveability of Roden Street between King and Spencer Streets. The Street Greening Proposal transforms the streetscape with an increase of lawn, additional trees, biodiverse garden beds and traffic calming measures. The project team at City of Melbourne has worked hard to assess the technical feasibility of this street greening project, undertaking soil testing, traffic swept path analysis, service proving and assessment of existing trees to ensure the proposal is achievable.

The Callistemon (Bottle Brush) street trees indicated for removal have been assessed and identified by an independent arborist as having low retention value due to sustained and ongoing Saw Fly larvae damage. A tree removal fact sheet for Roden Street is available on the Greening Roden Street proposal website: participate.melbourne.vic.gov.au/greening-roden-street

The proposed removal of the Callistemons will allow for increased and improved growing conditions, to support the growth of a thriving and healthy tree community.

GREENING RODEN STREET PROPOSAL

WEST MELBOURNE



LEGEND

- Proposed tree
- Proposed garden
- Lawn
- Existing tree
- Tree to be removed
- Paving
- Granitic gravel
- Speed hump

PROJECT SUMMARY

By expanding the green space and reducing paving along Roden Street we will be able to create a larger, more beautiful and functional green space for the local community to enjoy.

The Greening Proposal transforms the streetscape with:

- 1000sqm of additional greening and permeable ground through the removal of paving and the conversion of roadway
- The creation of a new path network
- Increased canopy
- Biodiverse garden beds
- Traffic calming with the introduction of a speed hump where the road transitions from two-way to one-way. This will discourage vehicles driving the wrong way up the one-way section.

The proposed design increases green space and tree canopy, improves local area cooling, enhances native ecology and stormwater retention, improves pedestrian connectivity, and provides a more pleasant user experience.

To create the new green space, we will need to relocate some of the existing car parks from the proposed closed section of Roden Street. The new parking configuration will match the existing parking conditions seen towards Spencer Street.

This is represented in the above concept plan and further illustrated through the following artist impressions.

GREENING RODEN STREET PROPOSAL

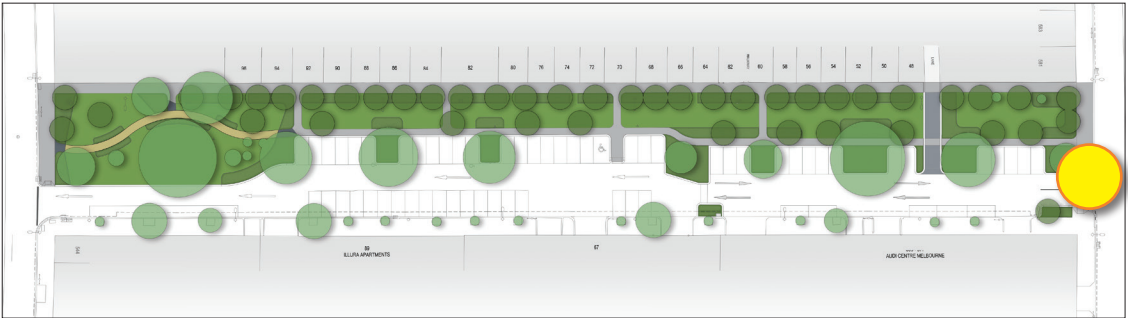
WEST MELBOURNE



ARTIST IMPRESSION: VIEW FROM KING STREET



VIEW LOCATION PLAN



GREENING RODEN STREET PROPOSAL

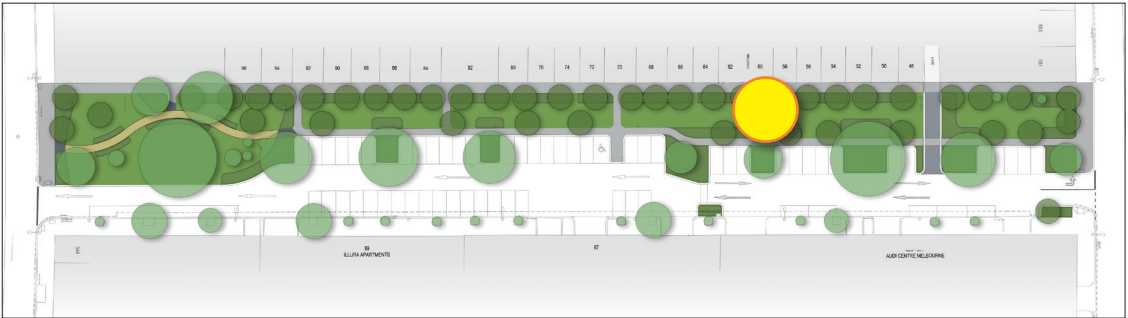
WEST MELBOURNE



ARTIST IMPRESSION: VIEW OF THE PROPOSED GREEN SPACE



VIEW LOCATION PLAN



GREENING RODEN STREET PROPOSAL

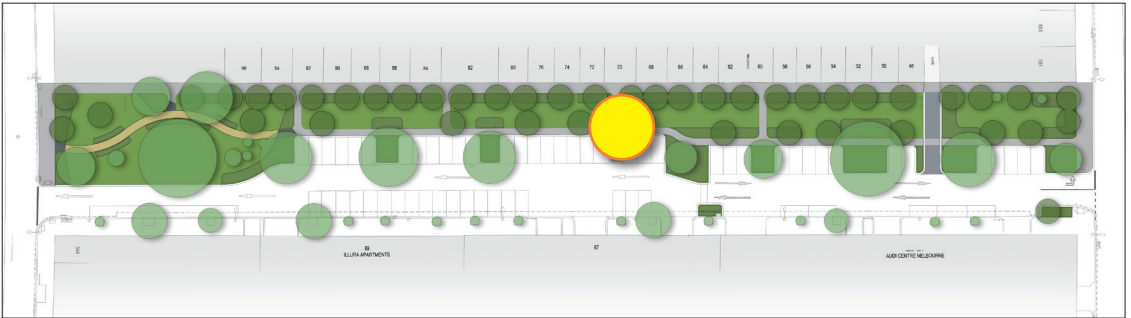
WEST MELBOURNE



ARTIST IMPRESSION: VIEW OF THE PROPOSED GREEN SPACE, PARKING CONFIGURATION & SPEED HUMP



VIEW LOCATION PLAN



GREENING RODEN STREET PROPOSAL

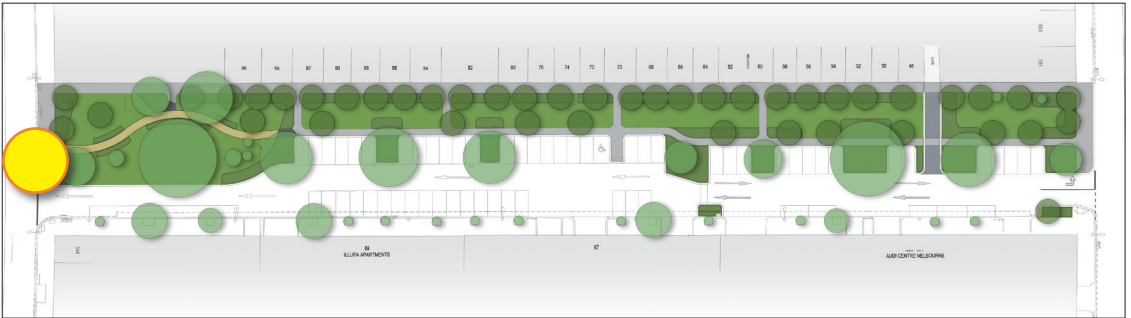
WEST MELBOURNE



ARTIST IMPRESSION: VIEW FROM SPENCER STREET

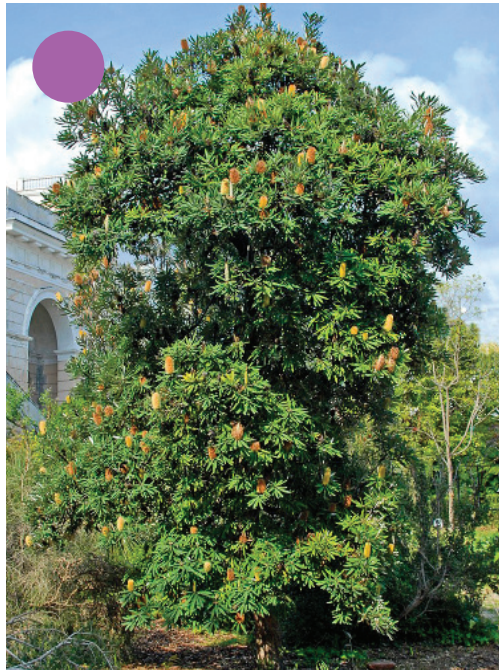
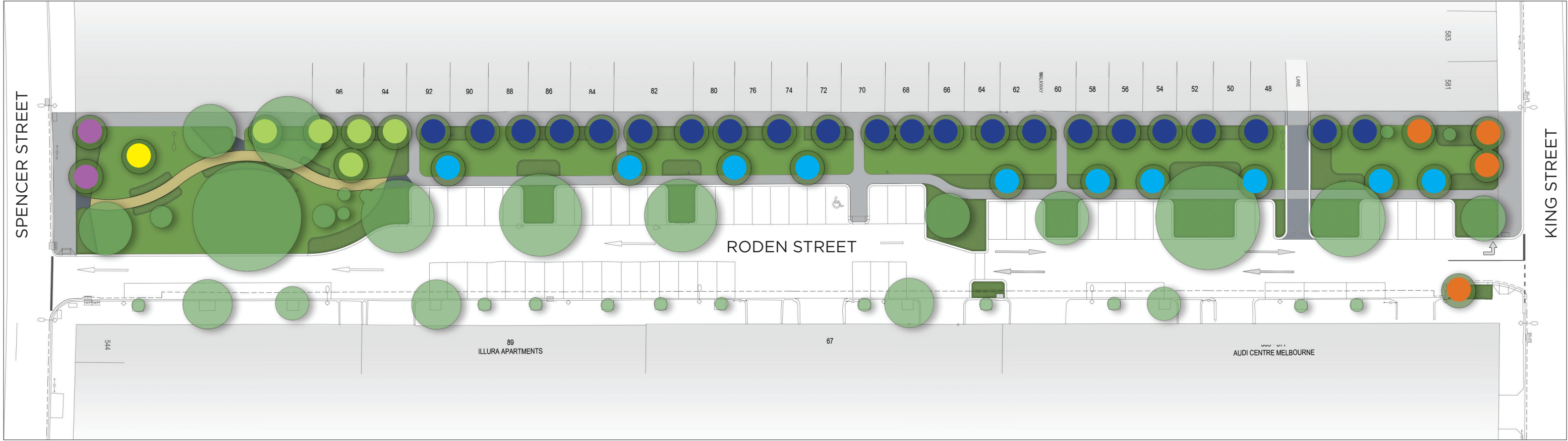


VIEW LOCATION PLAN



GREENING RODEN STREET - PROPOSED TREES

WEST MELBOURNE



Banksia serrata (H: 5m)



Corymbia citriodora (H: 12m)



Backhousia myrtifolia (H: 3m)



Hakea laurina (H: 4m)



Melia azedarach (H: 6m)



Banksia integrifolia (H: 6m)