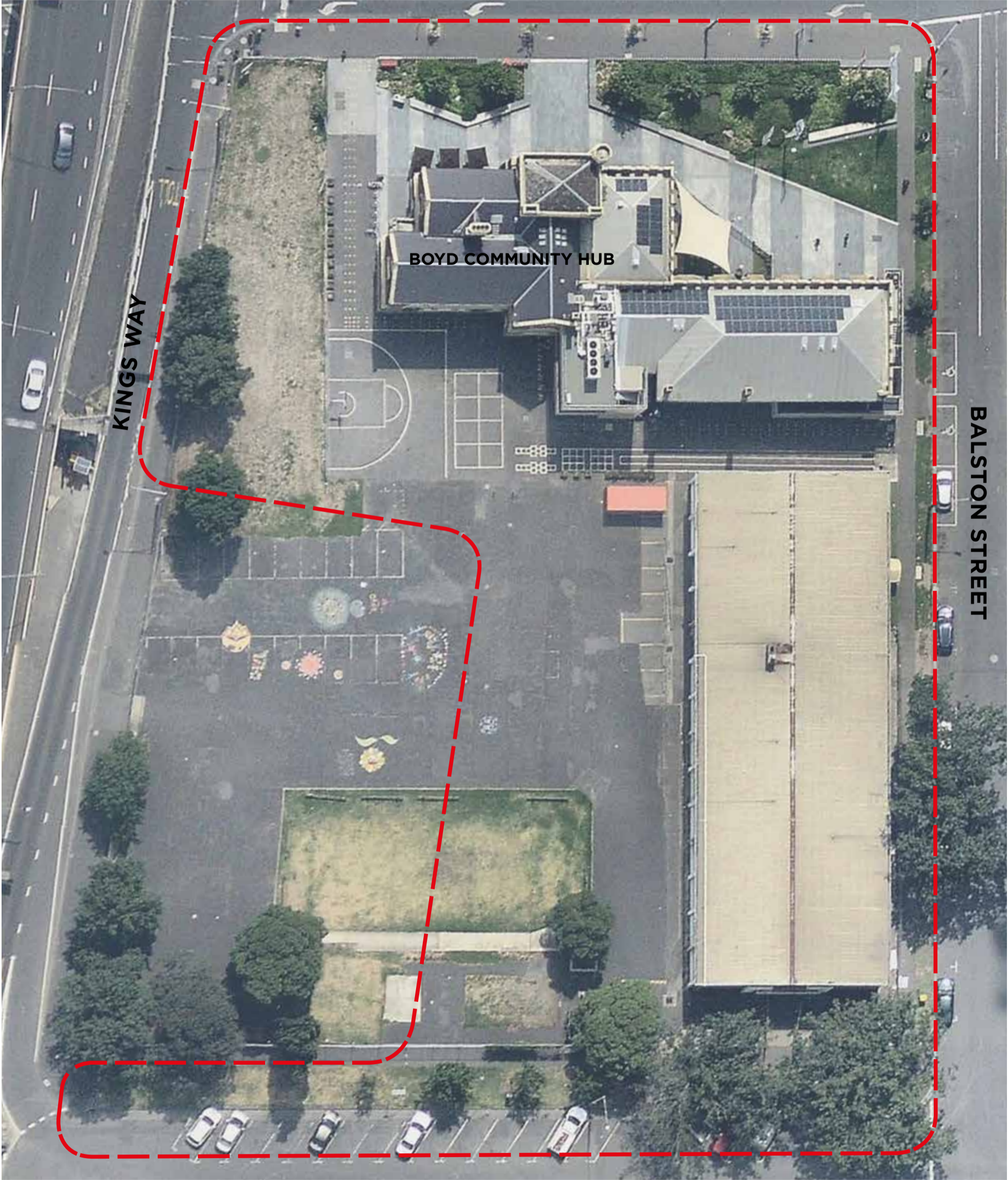


# BOYD PARK

## EXISTING CONDITIONS

CITY ROAD



BOYD COMMUNITY HUB

KINGS WAY

BALSTON STREET

KAVANAGH STREET



# BOYD PARK FINAL CONCEPT PLAN

CITY ROAD



KAVANAGH STREET



# BOYD PARK

## STAGE 1 CONCEPT PLAN

CITY ROAD



BALSTON STREET

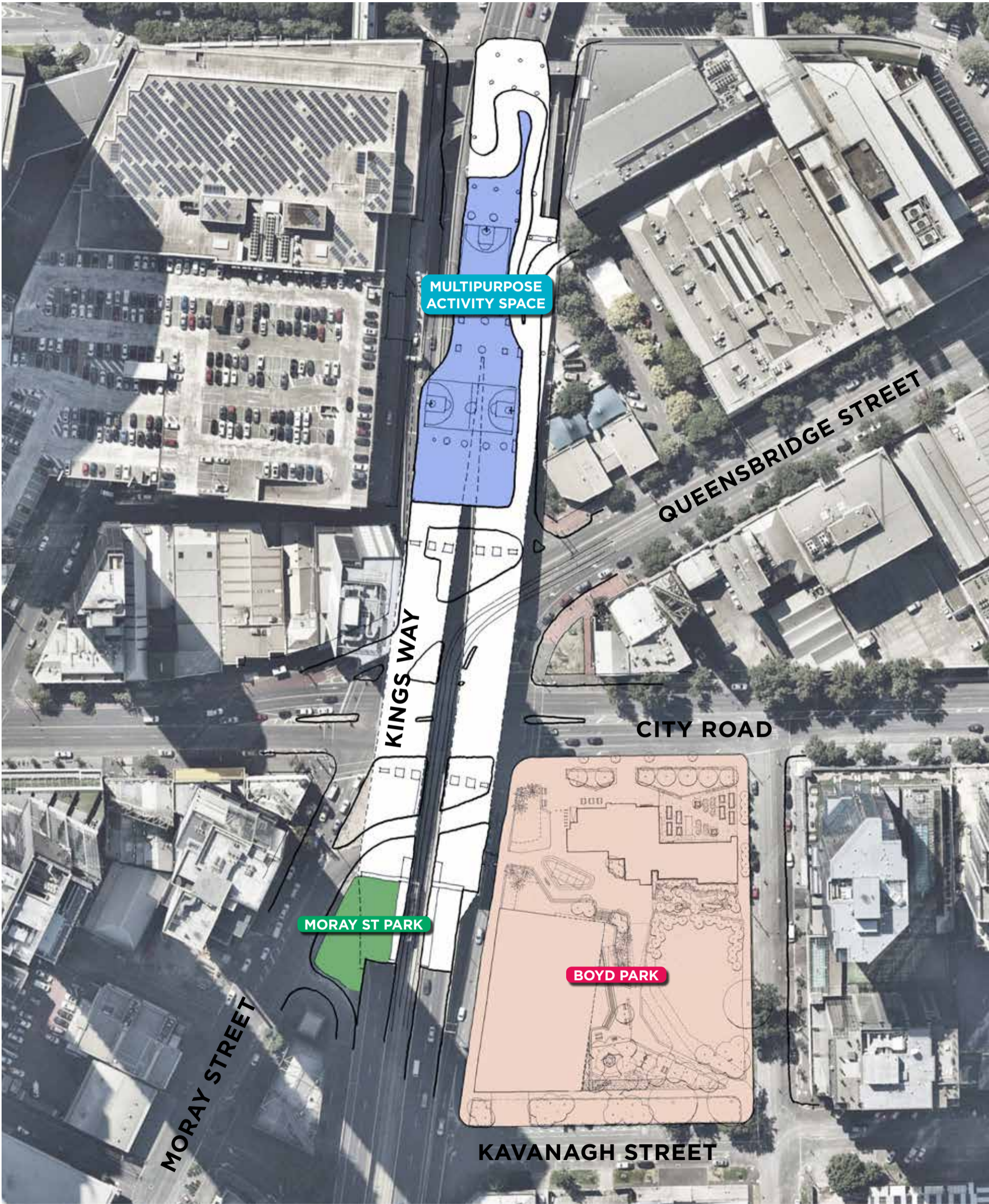
KINGS WAY

KAVANAGH STREET



# BOYD PARK

## SURROUNDING PRECINCT OPPORTUNITIES



# BOYD PARK FORECOURT GARDEN



*The City Road frontage will be upgraded to provide raised communal garden planters to bring activity to the front of the Boyd site.*

## **This area will include:**

- Retention of existing garden bed planting and seating on City Road.
- Development of existing lawn with raised communal planters.
- Additional seating for gathering and socialising.

## **Why are we doing this?**

In phase two community consultation you emphasised the importance of retaining the existing garden beds and a desire to see space for communal gardening. You also emphasised the importance of a multi-purpose court, but not in this location. We are investigating building a full multi-purpose court in the Kings Way Undercroft, as part of implementing the City Road Master Plan.



# BOYD PARK NORTH LAWN



*A sunny lawn space with seating areas and generous entry and gathering space at the corner of City Road and Kings Way.*

## **This area will include:**

- Raised sunny lawn area with shade trees and seating for relaxation.
- Large outdoor space with tables and seating for outdoor dining outside the existing café.
- Generous site entry and gathering area at City Road frontage and improved access to the tram stop via new entry and future raised crossing point.

## **Why are we doing this?**

In phase one community consultation you emphasised the importance of access to nature and seating areas.



# BOYD PARK SCHOOLYARD



*A space for gathering, events and play, that relates to its former use as a school, extending from the Boyd Hub and integrated with the future development.*

## **This area will include:**

- Line markings for flexible child-friendly games.
- Sloping lawn and amphitheatre seating opportunities for gatherings and events.
- New garden spaces and shade trees.

## **Why are we doing this?**

In phase one community consultation, you emphasised the importance of areas for performances, events and children's play.



# BOYD PARK FOREST GARDEN



*A tranquil seating area for gathering, reading and informal play that compliments the library, set amongst deciduous trees and garden beds.*

## **This area will include:**

- Timber and rock seats and edges for gathering and reading.
- Deciduous trees for shade in summer and access to sunlight in winter.
- Sensory gardens and spaces that encourage informal nature-play.

## **Why are we doing this?**

In phase one community consultation you emphasised the importance of spaces for quiet relaxation, trees, shade and children's play.



# BOYD PARK

## PICNIC & PLAY TERRACE



*An elevated picnic and play space near Kavanagh Street which integrates with the future development edge and park expansion.*

### **This area will include:**

- Picnic tables and BBQ facilities for gathering and outdoor dining.
- Informal play spaces amongst shade trees and places to sit.
- Expanded play space with toddler play elements and protection from adjoining roadways.

### **Why are we doing this?**

In phase one community consultation you emphasised the importance of providing areas for children's play and barbeque and picnic facilities. In phase two community consultation you emphasised the importance of providing an expanded place space, protected from adjacent roadways and suitable for toddler age children.



# BOYD PARK VILLAGE GREEN



*A large flexible open lawn that responds to the lack of green open space in Southbank.*

## **This area will include:**

- Large open sunny lawn space for flexible activities.
- Shade trees and seating walls around lawn edges for resting and shade.
- Generous pathways and park lighting around the perimeter of the green to provide a strong link through Boyd park.

## **Why are we doing this?**

In phase one community consultation, you emphasised the importance of a green park with access to sun and shade for flexible activities.

