

Information contained on this drawing is the copyright of Golder Associates Pty. Ltd. Unauthorised use or reproduction of this plan either wholly or in part without written permission infringes copyright. © Golder Associates Pty. Ltd.

CoM Property ID: 109006

71-73 Stanley Street WEST MELBOURNE VIC 3003



#### LEGEND

 Parcel Boundary



#### Action Plan

##### EAO Recommendation

**Apply EAO**

##### EAO Comment

Historical industrial/commercial building with documented or likely past industrial use with possible high potential for contamination.

#### Resources used to make decision



#### Site Use Summary

**Current Land Use**  
Commercial

**Historic Land Use**  
Industrial



#### Key Information Supporting EAO Decision

Unknown current or past industrial use identified on site.

#### Additional Considerations

Brick industrial building built in the 1930's. Refurbished into restaurant in 1990.

#### Resources used to make decision

West Melbourne Heritage Review Appendix 2 (May 2016), Site inspection, Historical aerial photographs (1968/9 & 1987)

WEST MELBOURNE EAO - AMENDMENT C309 -  
WEST MELBOURNE STRUCTURE PLAN:  
PRELIMINARY LAND CONTAMINATION ASSESSMENT

CITY OF MELBOURNE

**GIS ID: 7752**

#### COPYRIGHT

Aerial Imagery copyright  
City of Melbourne

0 3.5 7 14 21 28 35 metres

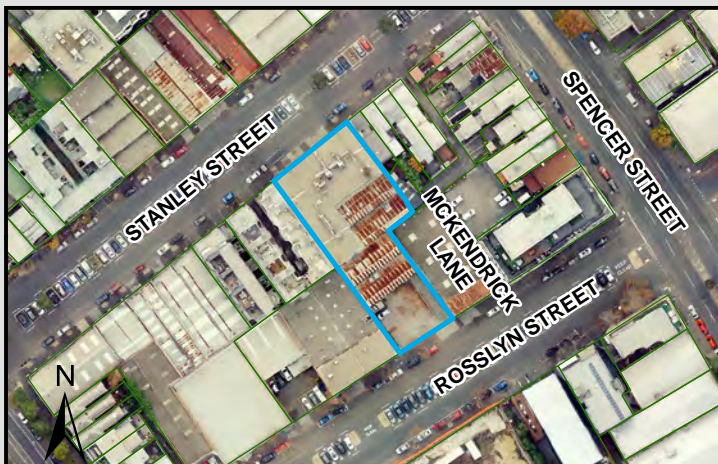
**SCALE (at A4) (BUILDING MAP) 1:700**  
DATUM GDA 94, PROJECTION MGA Zone 55

**PROJECT: 18113718**  
**DATE: 27 FEB 2019**  
**DRAWN: TPC**  
**CHECKED: IMK**



CoM Property ID: 109012

103-113 Stanley Street WEST MELBOURNE VIC 3003



#### LEGEND

 Parcel Boundary



### Action Plan

#### EAO Recommendation

**Apply EAO**

#### EAO Comment

Historical industrial/commercial building with documented or likely past industrial use with possible high potential for contamination.

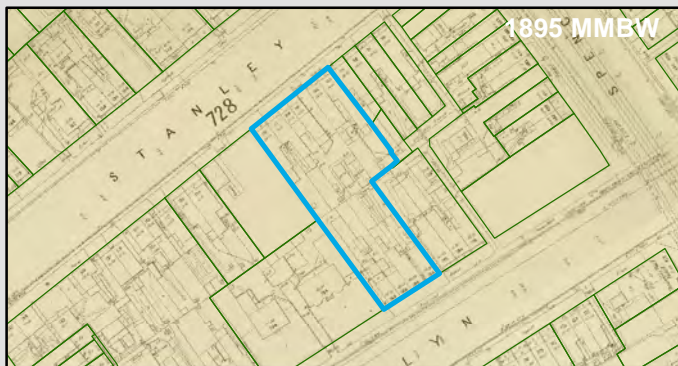
### Resources used to make decision



### Site Use Summary

**Current Land Use**  
Industrial

**Historic Land Use**  
Residential



#### Key Information Supporting EAO Decision

Unknown current or past industrial use identified on site.

#### Additional Considerations

1895 MMBW plan map indicates multiple residential houses. Current building present in 1987 aerial. Currently Acrux Pharmaceutical product development.

#### Resources used to make decision

Site Inspection,  
MMBW Maps (1895),  
Historical aerial photographs

WEST MELBOURNE EAO - AMENDMENT C309 -  
WEST MELBOURNE STRUCTURE PLAN:  
PRELIMINARY LAND CONTAMINATION ASSESSMENT

CITY OF MELBOURNE

**GIS ID: 6686**

#### COPYRIGHT

Aerial Imagery copyright  
City of Melbourne

0 10 20 40 60 80 100 metres

**SCALE (at A4) (BUILDING MAP) 1:2,400**  
DATUM GDA 94, PROJECTION MGA Zone 55

**PROJECT: 18113718**  
**DATE: 27 FEB 2019**  
**DRAWN: TPC**  
**CHECKED: IMK**

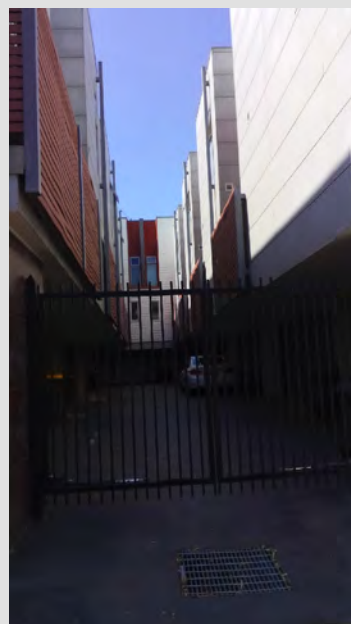




Information contained on this drawing is the copyright of Golder Associates Pty. Ltd. Unauthorised use or reproduction of this plan either wholly or in part without written permission infringes copyright. © Golder Associates Pty. Ltd.

CoM Property ID: 109013

115-121 Stanley Street WEST MELBOURNE VIC 3003



#### LEGEND

 Parcel Boundary

#### Action Plan

##### EAO Recommendation

**Apply EAO**

##### EAO Comment

Historical industrial/commercial building with documented or likely past industrial use with possible high potential for contamination.

#### Site Use Summary

**Current Land Use**  
Residential

**Historic Land Use**  
Industrial

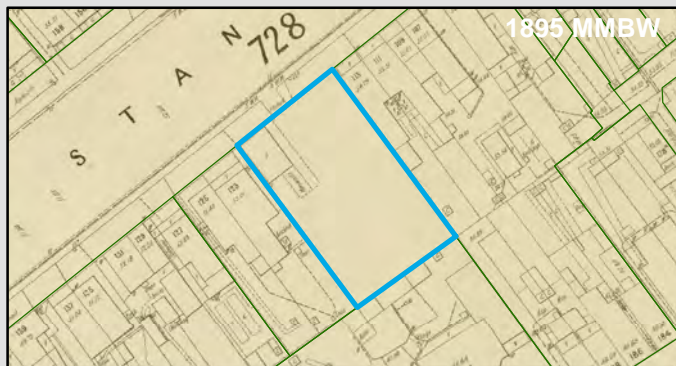
##### Key Information Supporting EAO Decision

Unknown current or past industrial use identified on site.

##### Additional Considerations

1895 plan indicates site was vastly vacant with two smaller structures.  
1987 aerial shows current building onsite.

#### Resources used to make decision



##### Resources used to make decision

Site Inspection,  
MMBW Maps (1895),  
Historical aerial photographs,  
Current aerial photographs (May 2018),  
City of Melbourne Interactive map

WEST MELBOURNE EAO - AMENDMENT C309 -  
WEST MELBOURNE STRUCTURE PLAN:  
PRELIMINARY LAND CONTAMINATION ASSESSMENT

CITY OF MELBOURNE

**GIS ID: 6687**

##### COPYRIGHT

Aerial Imagery copyright  
City of Melbourne

0 5 10 20 30 40 50 metres

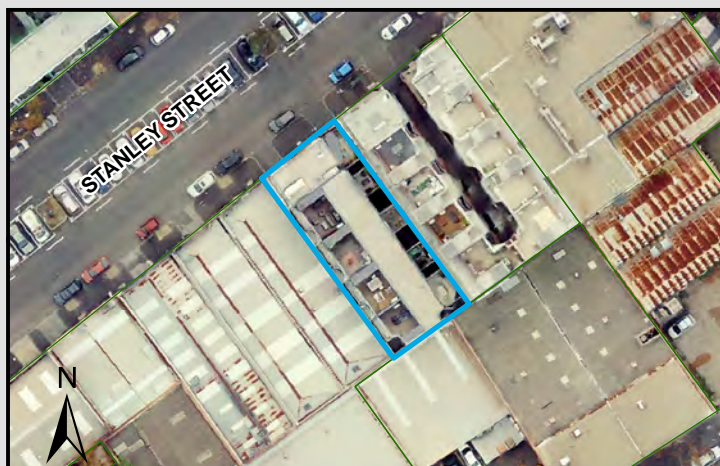
**SCALE (at A4) (BUILDING MAP) 1:1,300**  
DATUM GDA 94, PROJECTION MGA Zone 55

**PROJECT: 18113718**  
**DATE: 27 FEB 2019**  
**DRAWN: TPC**  
**CHECKED: IMK**



CoM Property ID: 109014

123-125 Stanley Street WEST MELBOURNE VIC 3003



#### LEGEND

 Parcel Boundary



#### Action Plan

##### EAO Recommendation

**Apply EAO**

##### EAO Comment

Historical industrial/commercial building with documented or likely past industrial use with possible high potential for contamination.

#### Resources used to make decision



#### Site Use Summary

**Current Land Use**  
Residential

**Historic Land Use**  
Industrial

#### Key Information Supporting EAO Decision

Unknown current or past industrial use identified on site.

#### Additional Considerations

1895 plan indicates two residential buildings. 1987 aerial indicates industrial type building.

#### Resources used to make decision

Site Inspection,  
MMBW Maps (1895),  
Historical aerial photographs,  
Current aerial photographs (May 2018)

WEST MELBOURNE EAO - AMENDMENT C309 -  
WEST MELBOURNE STRUCTURE PLAN:  
PRELIMINARY LAND CONTAMINATION ASSESSMENT

CITY OF MELBOURNE

**GIS ID: 6688**

#### COPYRIGHT

Aerial Imagery copyright  
City of Melbourne

0 5 10 20 30 40 50 metres

**SCALE (at A4) (BUILDING MAP) 1:1,100**  
DATUM GDA 94, PROJECTION MGA Zone 55

**PROJECT: 18113718**  
**DATE: 27 FEB 2019**  
**DRAWN: TPC**  
**CHECKED: IMK**





Information contained on this drawing is the copyright of Golder Associates Pty. Ltd. Unauthorised use or reproduction of this plan either wholly or in part without written permission infringes copyright. © Golder Associates Pty. Ltd.

CoM Property ID: 109015

127-153 Stanley Street WEST MELBOURNE VIC 3003



#### LEGEND

 Parcel Boundary



#### Action Plan

##### EAO Recommendation

**Apply EAO**

##### EAO Comment

Site has been identified as being potentially contaminated in accordance with the Potentially Contaminated Land General Practice Note (DSE, 2005)

#### Site Use Summary

**Current Land Use**  
Industrial

**Historic Land Use**  
Industrial

##### Key Information Supporting EAO Decision

Potentially contaminating land use/s identified on site as listed in the DSE General Practice Note (2005): Automotive repair/engine works

##### Additional Considerations

Smash repair solutions.

#### Resources used to make decision



##### Resources used to make decision

Site inspection, Historical aerial photographs (1968/9 & 1987), MMBW Maps (1895)

WEST MELBOURNE EAO - AMENDMENT C309 -  
WEST MELBOURNE STRUCTURE PLAN:  
PRELIMINARY LAND CONTAMINATION ASSESSMENT

CITY OF MELBOURNE

**GIS ID: 6689**

##### COPYRIGHT

Aerial Imagery copyright  
City of Melbourne

0 12.5 25 50 75 100 125 metres

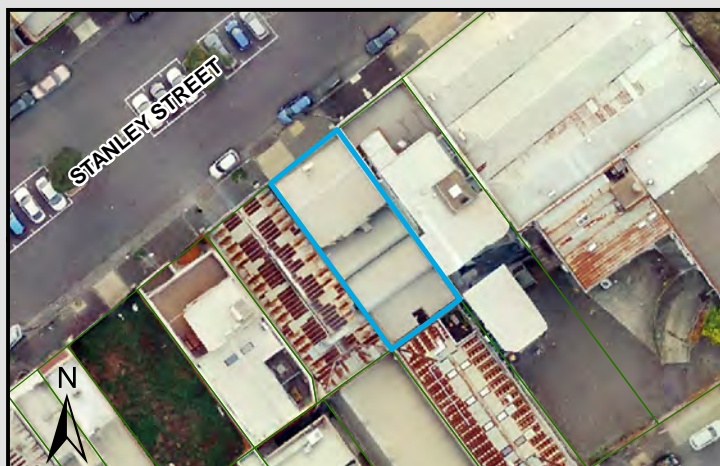
**SCALE (at A4) (BUILDING MAP) 1:2,500**  
DATUM GDA 94, PROJECTION MGA Zone 55

**PROJECT: 18113718**  
**DATE: 27 FEB 2019**  
**DRAWN: TPC**  
**CHECKED: IMK**



CoM Property ID: 109016

175-177 Stanley Street WEST MELBOURNE VIC 3003



#### LEGEND

 Parcel Boundary



#### Action Plan

##### EAO Recommendation

**Apply EAO**

##### EAO Comment

Site has been identified as being potentially contaminated in accordance with the Potentially Contaminated Land General Practice Note (DSE, 2005)

#### Site Use Summary

**Current Land Use**  
Industrial

**Historic Land Use**  
Industrial

#### Key Information Supporting EAO Decision

Potentially contaminating land use/s identified on site as listed in the DSE General Practice Note (2005): Iron and steel works

#### Additional Considerations

Formerly 'Falcon Engineering' and 'Specialty Steel and Hardware Manufacturing Company'.

#### Resources used to make decision



1987 Imagery



1895 MMBW

#### Resources used to make decision

West Melbourne Heritage Review Appendix 2 (May 2016), Site inspection, Historical aerial photographs (1968/9 & 1987), MMBW Maps (1895)

WEST MELBOURNE EAO - AMENDMENT C309 -  
WEST MELBOURNE STRUCTURE PLAN:  
PRELIMINARY LAND CONTAMINATION ASSESSMENT

CITY OF MELBOURNE

**GIS ID: 6628**

#### COPYRIGHT

Aerial Imagery copyright  
City of Melbourne

0 4.5 9 18 27 36 45 metres

**SCALE (at A4) (BUILDING MAP) 1:900**  
DATUM GDA 94, PROJECTION MGA Zone 55

**PROJECT: 18113718**  
**DATE: 27 FEB 2019**  
**DRAWN: TPC**  
**CHECKED: IMK**





CoM Property ID: 109017

179-181 Stanley Street WEST MELBOURNE VIC 3003



#### LEGEND

 Parcel Boundary



#### Action Plan

##### EAO Recommendation

**Apply EAO**

##### EAO Comment

Site has been identified as being potentially contaminated in accordance with the Potentially Contaminated Land General Practice Note (DSE, 2005)

#### Site Use Summary

**Current Land Use**  
Industrial

**Historic Land Use**  
Industrial

##### Key Information Supporting EAO Decision

Potentially contaminating land use/s identified on site as listed in the DSE General Practice Note (2005): Automotive repair/engine works

##### Additional Considerations

#### Resources used to make decision



##### Resources used to make decision

Site inspection, Historical aerial photographs (1968/9 & 1987), MMBW Maps (1895)

WEST MELBOURNE EAO - AMENDMENT C309 -  
WEST MELBOURNE STRUCTURE PLAN:  
PRELIMINARY LAND CONTAMINATION ASSESSMENT

CITY OF MELBOURNE

**GIS ID: 6629**

##### COPYRIGHT

Aerial Imagery copyright  
City of Melbourne

0 4.5 9 18 27 36 45 metres

**SCALE (at A4) (BUILDING MAP) 1:900**  
DATUM GDA 94, PROJECTION MGA Zone 55

**PROJECT: 18113718**  
**DATE: 27 FEB 2019**  
**DRAWN: TPC**  
**CHECKED: IMK**



Information contained on this drawing is the copyright of Golder Associates Pty. Ltd. Unauthorised use or reproduction of this plan either wholly or in part without written permission infringes copyright. © Golder Associates Pty. Ltd.

CoM Property ID: 109018

183-185 Stanley Street WEST MELBOURNE VIC 3003



#### LEGEND

 Parcel Boundary



#### Action Plan

##### EAO Recommendation

**Apply EAO**

##### EAO Comment

Historical industrial/commercial building with documented or likely past industrial use with possible high potential for contamination.

#### Site Use Summary

**Current Land Use**  
Residential

**Historic Land Use**  
Industrial

#### Key Information Supporting EAO Decision

Unknown current or past industrial use identified on site.

#### Additional Considerations

1859 indicates residential, 1987 indicates industrial type building.

#### Resources used to make decision



#### Resources used to make decision

Site Inspection,  
MMBW Maps (1895),  
Historical aerial photographs,  
Current aerial photographs (May 2018)

WEST MELBOURNE EAO - AMENDMENT C309 -  
WEST MELBOURNE STRUCTURE PLAN:  
PRELIMINARY LAND CONTAMINATION ASSESSMENT

CITY OF MELBOURNE

**GIS ID: 6630**

#### COPYRIGHT

Aerial Imagery copyright  
City of Melbourne

0 4 8 16 24 32 40 metres

**SCALE (at A4) (BUILDING MAP) 1:800**  
DATUM GDA 94, PROJECTION MGA Zone 55

**PROJECT: 18113718**  
**DATE: 27 FEB 2019**  
**DRAWN: TPC**  
**CHECKED: IMK**

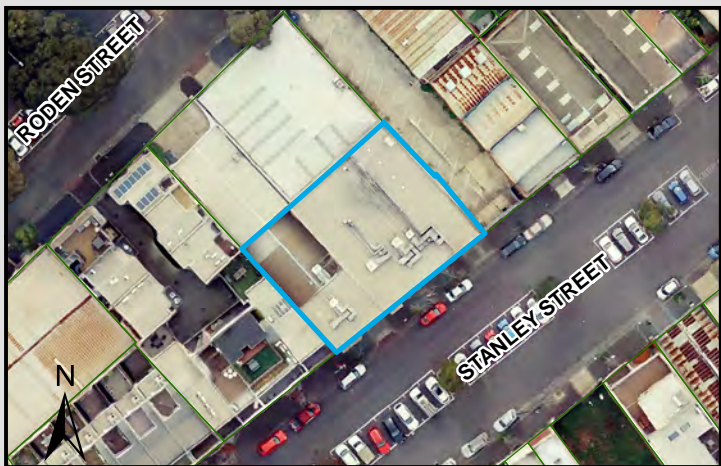




Information contained on this drawing is the copyright of Golder Associates Pty. Ltd. Unauthorised use or reproduction of this plan either wholly or in part without written permission infringes copyright. © Golder Associates Pty. Ltd.

CoM Property ID: 109035

218-228 Stanley Street WEST MELBOURNE VIC 3003



#### LEGEND

 Parcel Boundary



#### Action Plan

##### EAO Recommendation

**Apply EAO**

##### EAO Comment

Historical industrial/commercial building with documented or likely past industrial use with possible high potential for contamination.

#### Resources used to make decision



#### Site Use Summary

**Current Land Use**  
Commercial

**Historic Land Use**  
Industrial

#### Key Information Supporting EAO Decision

Unknown current or past industrial use identified on site.

#### Additional Considerations

1987 aerial indicates building type typical with industrial use. Building is currently different.

#### Resources used to make decision

Site Inspection,  
MMBW Maps (1895),  
Historical aerial photographs,  
Current aerial photographs (May 2018)

WEST MELBOURNE EAO - AMENDMENT C309 -  
WEST MELBOURNE STRUCTURE PLAN:  
PRELIMINARY LAND CONTAMINATION ASSESSMENT

CITY OF MELBOURNE

**GIS ID: 6619**

#### COPYRIGHT

Aerial Imagery copyright  
City of Melbourne

0 5 10 20 30 40 50 metres

**SCALE (at A4) (BUILDING MAP) 1:1,200**  
DATUM GDA 94, PROJECTION MGA Zone 55

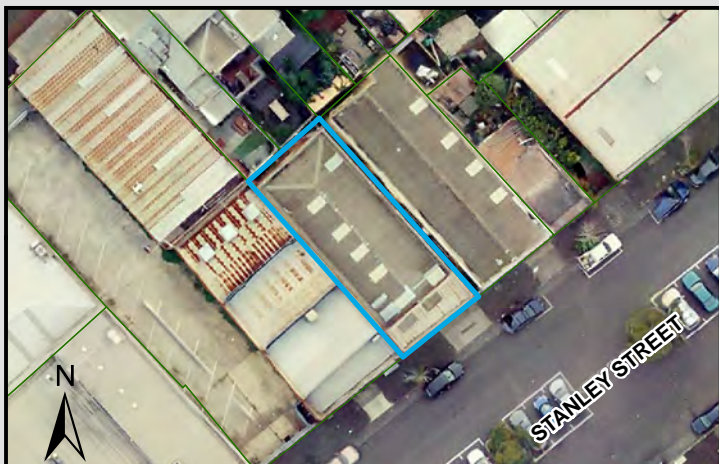
**PROJECT: 18113718**  
**DATE: 27 FEB 2019**  
**DRAWN: TPC**  
**CHECKED: IMK**



Information contained on this drawing is the copyright of Golder Associates Pty. Ltd. Unauthorised use or reproduction of this plan either wholly or in part without written permission infringes copyright. © Golder Associates Pty. Ltd.

CoM Property ID: 109036

206-208 Stanley Street WEST MELBOURNE VIC 3003



#### LEGEND

 Parcel Boundary



#### Action Plan

##### EAO Recommendation

**Apply EAO**

##### EAO Comment

Site has been identified as being potentially contaminated in accordance with the Potentially Contaminated Land General Practice Note (DSE, 2005)

#### Site Use Summary

**Current Land Use**  
Commercial

**Historic Land Use**  
Industrial

##### Key Information Supporting EAO Decision

Potentially contaminating land use/s identified on site as listed in the DSE General Practice Note (2005): Textile operations

##### Additional Considerations

#### Resources used to make decision



##### Resources used to make decision

City of Melbourne interactive map (2019), Site inspection, Historical aerial photographs (1968/9 & 1987)

WEST MELBOURNE EAO - AMENDMENT C309 -  
WEST MELBOURNE STRUCTURE PLAN:  
PRELIMINARY LAND CONTAMINATION ASSESSMENT

CITY OF MELBOURNE

**GIS ID: 6620**

##### COPYRIGHT

Aerial Imagery copyright  
City of Melbourne

0 4 8 16 24 32 40 metres

**SCALE (at A4) (BUILDING MAP) 1:800**  
DATUM GDA 94, PROJECTION MGA Zone 55

**PROJECT: 18113718**  
**DATE: 27 FEB 2019**  
**DRAWN: TPC**  
**CHECKED: IMK**

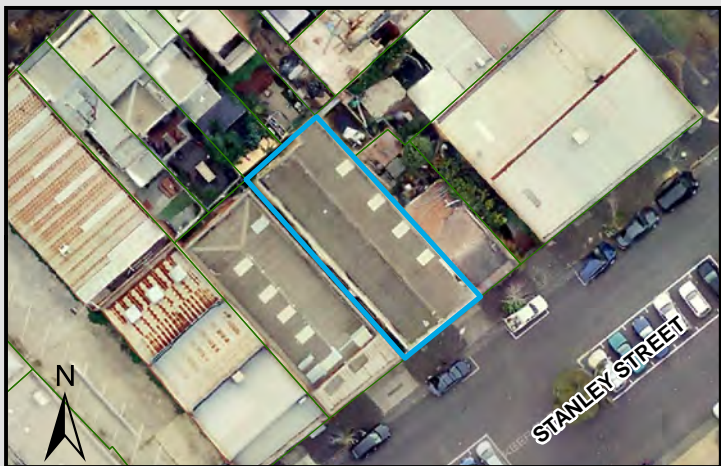




Information contained on this drawing is the copyright of Golder Associates Pty. Ltd. Unauthorised use or reproduction of this plan either wholly or in part without written permission infringes copyright. © Golder Associates Pty. Ltd.

CoM Property ID: 109037

202-204 Stanley Street WEST MELBOURNE VIC 3003



#### LEGEND

 Parcel Boundary



#### Action Plan

##### EAO Recommendation

**Apply EAO**

##### EAO Comment

Historical industrial/commercial building with documented or likely past industrial use with possible high potential for contamination.

#### Resources used to make decision



#### Site Use Summary

**Current Land Use**  
Commercial

**Historic Land Use**  
Other (unsure)



##### Key Information Supporting EAO Decision

Unknown current or past industrial use identified on site.

##### Additional Considerations

1987 aerial indicates current building onsite. Currently used as a warehouse for 'Arnotts's of Australia Pty Ltd'. Factory style building likely associated with industrial use.

##### Resources used to make decision

Site Inspection,  
MMBW Maps (1895),  
Historical aerial photographs,  
Current aerial photographs (May 2018)

WEST MELBOURNE EAO - AMENDMENT C309 -  
WEST MELBOURNE STRUCTURE PLAN:  
PRELIMINARY LAND CONTAMINATION ASSESSMENT

CITY OF MELBOURNE

**GIS ID: 6621**

##### COPYRIGHT

Aerial Imagery copyright  
City of Melbourne

0 4 8 16 24 32 40 metres

**SCALE (at A4) (BUILDING MAP) 1:800**  
DATUM GDA 94, PROJECTION MGA Zone 55

**PROJECT: 18113718**  
**DATE: 27 FEB 2019**  
**DRAWN: TPC**  
**CHECKED: IMK**



Information contained on this drawing is the copyright of Golder Associates Pty. Ltd. Unauthorised use or reproduction of this plan either wholly or in part without written permission infringes copyright. © Golder Associates Pty. Ltd.

CoM Property ID: 109038

200 Stanley Street WEST MELBOURNE VIC 3003



LEGEND

 Parcel Boundary



Action Plan

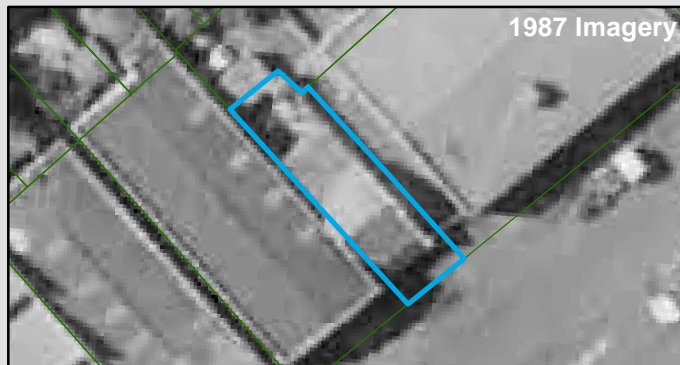
EAO Recommendation

**Apply EAO**

EAO Comment

Site is subject to potential contamination from an offsite source.

Resources used to make decision



Site Use Summary

**Current Land Use**  
Residential

**Historic Land Use**  
Residential



Key Information Supporting EAO Decision

Research indicates this site has currently and previously been used for residential purposes.

Additional Considerations

Resources used to make decision

Site inspection, Historical aerial photographs (1968/9 & 1987)

WEST MELBOURNE EAO - AMENDMENT C309 -  
WEST MELBOURNE STRUCTURE PLAN:  
PRELIMINARY LAND CONTAMINATION ASSESSMENT

CITY OF MELBOURNE

GIS ID: 6622

COPYRIGHT

Aerial Imagery copyright  
City of Melbourne

0 3 6 12 18 24 30 metres

SCALE (at A4) (BUILDING MAP) 1:600  
DATUM GDA 94, PROJECTION MGA Zone 55

PROJECT: 18113718  
DATE: 27 FEB 2019  
DRAWN: TPC  
CHECKED: IMK

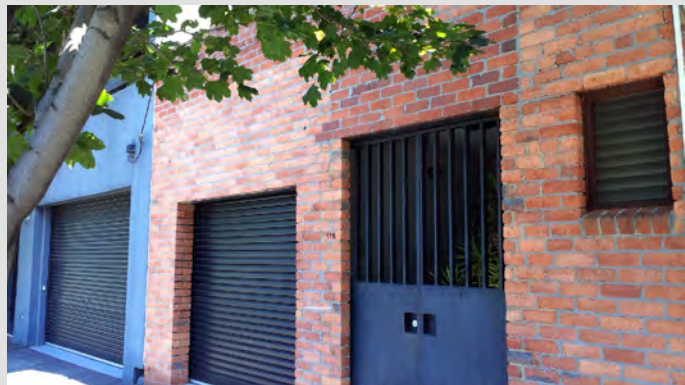




Information contained on this drawing is the copyright of Golder Associates Pty. Ltd. Unauthorised use or reproduction of this plan either wholly or in part without written permission infringes copyright. © Golder Associates Pty. Ltd.

CoM Property ID: 109040

174-176 Stanley Street WEST MELBOURNE VIC 3003



#### LEGEND

 Parcel Boundary

#### Action Plan

##### EAO Recommendation

**Apply EAO**

##### EAO Comment

Historical industrial/commercial building with documented or likely past industrial use with possible high potential for contamination.

#### Site Use Summary

**Current Land Use**  
Commercial

**Historic Land Use**  
Industrial

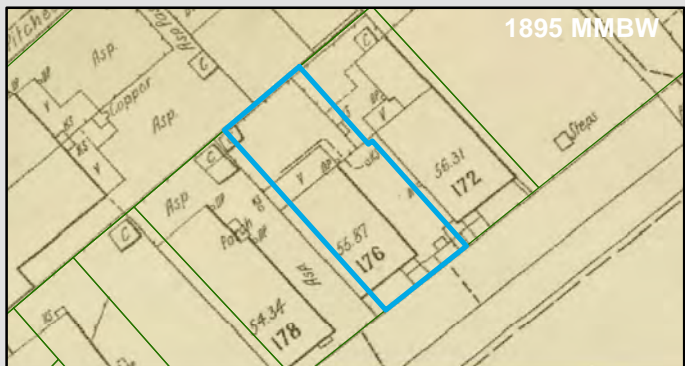
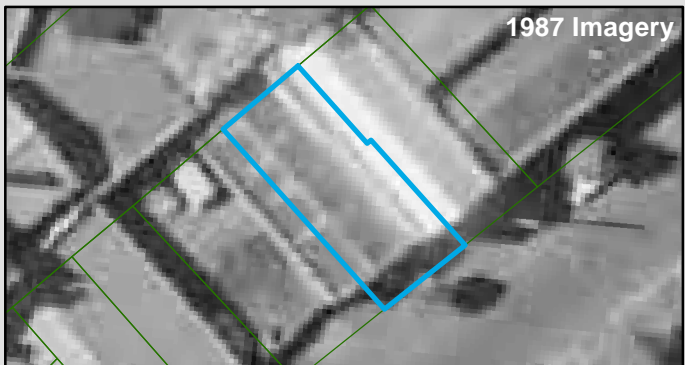
#### Key Information Supporting EAO Decision

Unknown current or past industrial use identified on site.

#### Additional Considerations

1895 indicates residential. 1987 indicates building typical of industrial use.

#### Resources used to make decision



#### Resources used to make decision

Site Inspection,  
MMBW Maps (1895),  
Historical aerial photographs,  
Current aerial photographs (May 2018)

WEST MELBOURNE EAO - AMENDMENT C309 -  
WEST MELBOURNE STRUCTURE PLAN:  
PRELIMINARY LAND CONTAMINATION ASSESSMENT

CITY OF MELBOURNE

**GIS ID: 6664**

#### COPYRIGHT

Aerial Imagery copyright  
City of Melbourne

0 2.5 5 10 15 20 25 metres

**SCALE (at A4) (BUILDING MAP) 1:500**  
DATUM GDA 94, PROJECTION MGA Zone 55

**PROJECT: 18113718**  
**DATE: 27 FEB 2019**  
**DRAWN: TPC**  
**CHECKED: IMK**



Information contained on this drawing is the copyright of Golder Associates Pty. Ltd. Unauthorised use or reproduction of this plan either wholly or in part without written permission infringes copyright. © Golder Associates Pty. Ltd.

CoM Property ID: 109041

172 Stanley Street WEST MELBOURNE VIC 3003



LEGEND

 Parcel Boundary



Action Plan

EAO Recommendation

**Apply EAO**

EAO Comment

Site has been identified as being potentially contaminated in accordance with the Potentially Contaminated Land General Practice Note (DSE, 2005)

Site Use Summary

**Current Land Use**  
Commercial

**Historic Land Use**  
Industrial

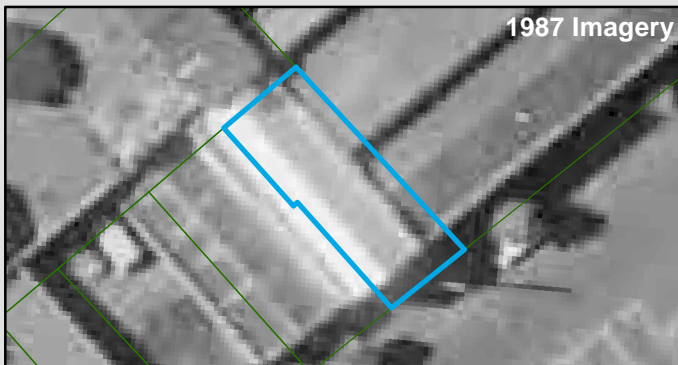
Key Information Supporting EAO Decision

Potentially contaminating land use/s identified on site as listed in the DSE General Practice Note (2005): Foundry

Additional Considerations

Formerly 'Burnell C F' Foundry.

Resources used to make decision



Resources used to make decision

Site Inspection,  
MMBW Maps (1895),  
Historical aerial photographs,  
Current aerial photographs (May 2018),  
Publicly available Melbourne Street Directories (Yellow Pages 1990, Urban Business Directory 1975/6 & 1984)

WEST MELBOURNE EAO - AMENDMENT C309 -  
WEST MELBOURNE STRUCTURE PLAN:  
PRELIMINARY LAND CONTAMINATION ASSESSMENT

CITY OF MELBOURNE

**GIS ID: 6665**

COPYRIGHT

Aerial Imagery copyright  
City of Melbourne

0 2.5 5 10 15 20 25 metres

**SCALE (at A4) (BUILDING MAP) 1:500**  
DATUM GDA 94, PROJECTION MGA Zone 55

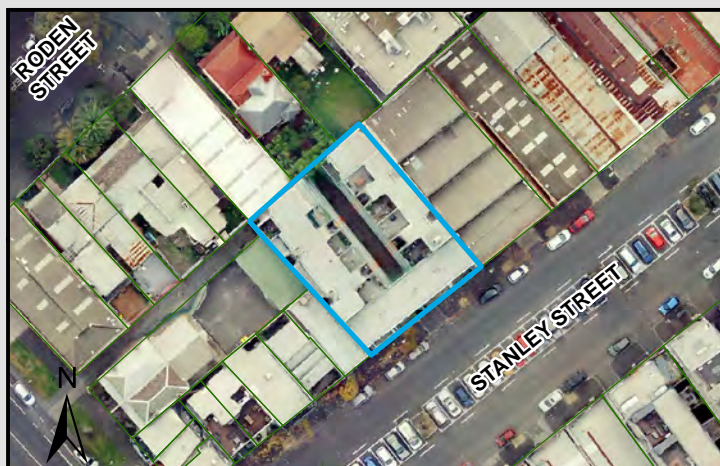
**PROJECT: 18113718**  
**DATE: 27 FEB 2019**  
**DRAWN: TPC**  
**CHECKED: IMK**





CoM Property ID: 109042

162-170 Stanley Street WEST MELBOURNE VIC 3003



#### LEGEND

 Parcel Boundary



#### Action Plan

##### EAO Recommendation

**Apply EAO**

##### EAO Comment

Site has been identified as being potentially contaminated in accordance with the Potentially Contaminated Land General Practice Note (DSE, 2005)

#### Site Use Summary

**Current Land Use**  
Residential

**Historic Land Use**  
Industrial

##### Key Information Supporting EAO Decision

Potentially contaminating land use/s identified on site as listed in the DSE General Practice Note (2005): Iron and steel works

##### Additional Considerations

1987 Aerial shows a saw tooth roof on site, which indicates likely past industrial use. Possibly Steel works from adjacent property.

#### Resources used to make decision



##### Resources used to make decision

Site Inspection,  
MMBW Maps (1895),  
Historical aerial photographs,  
Current aerial photographs (May 2018)

WEST MELBOURNE EAO - AMENDMENT C309 -  
WEST MELBOURNE STRUCTURE PLAN:  
PRELIMINARY LAND CONTAMINATION ASSESSMENT

CITY OF MELBOURNE

**GIS ID: 6666**

##### COPYRIGHT

Aerial Imagery copyright  
City of Melbourne

0 5 10 20 30 40 50 metres

**SCALE (at A4) (BUILDING MAP) 1:1,300**  
DATUM GDA 94, PROJECTION MGA Zone 55

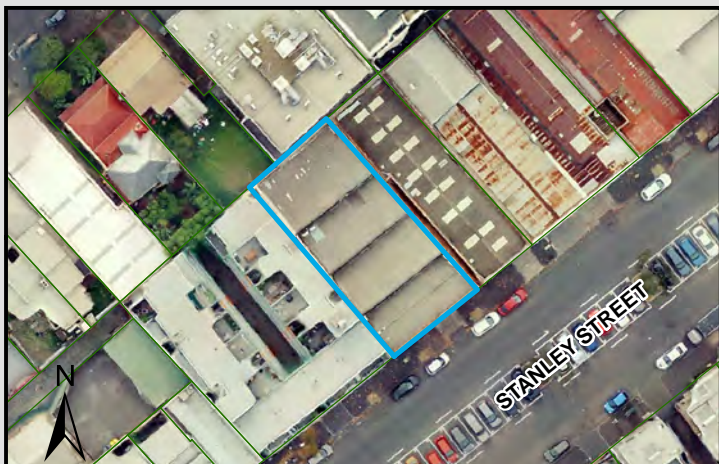
**PROJECT: 18113718**  
**DATE: 27 FEB 2019**  
**DRAWN: TPC**  
**CHECKED: IMK**



Information contained on this drawing is the copyright of Golder Associates Pty. Ltd. Unauthorised use or reproduction of this plan either wholly or in part without written permission infringes copyright. © Golder Associates Pty. Ltd.

CoM Property ID: 109043

154-160 Stanley Street WEST MELBOURNE VIC 3003



#### LEGEND

 Parcel Boundary



#### Action Plan

##### EAO Recommendation

**Apply EAO**

##### EAO Comment

Site has been identified as being potentially contaminated in accordance with the Potentially Contaminated Land General Practice Note (DSE, 2005)

#### Resources used to make decision



1987 Imagery

#### Site Use Summary

**Current Land Use**  
Industrial

**Historic Land Use**  
Industrial



1895 MMBW

##### Key Information Supporting EAO Decision

Potentially contaminating land use/s identified on site as listed in the DSE General Practice Note (2005): Automotive repair/engine works, Iron and steel works

##### Additional Considerations

Formerly Brown's factory and Commonwealth Steel Company. Current building has evidence of former motor garage.

##### Resources used to make decision

West Melbourne Heritage Review Appendix 2 (May 2016), Site inspection, Historical aerial photographs (1968/9 & 1987), MMBW Maps (1895)

WEST MELBOURNE EAO - AMENDMENT C309 -  
WEST MELBOURNE STRUCTURE PLAN:  
PRELIMINARY LAND CONTAMINATION ASSESSMENT

CITY OF MELBOURNE

GIS ID: 6667

##### COPYRIGHT

Aerial Imagery copyright  
City of Melbourne

0 5 10 20 30 40 50 metres

SCALE (at A4) (BUILDING MAP) 1:1,100  
DATUM GDA 94, PROJECTION MGA Zone 55

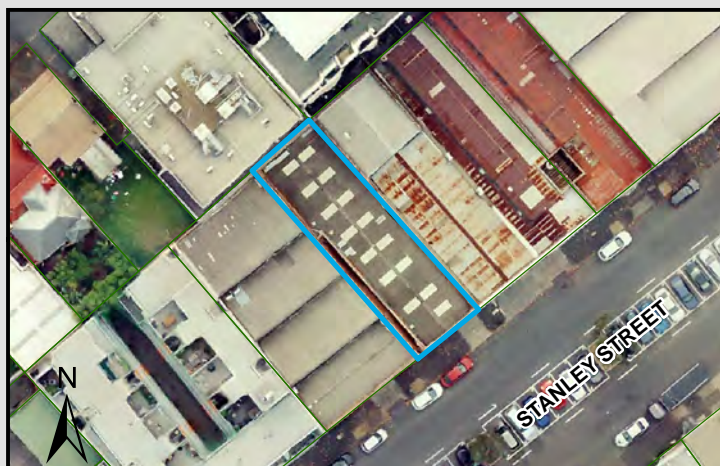
PROJECT: 18113718  
DATE: 27 FEB 2019  
DRAWN: TPC  
CHECKED: IMK





CoM Property ID: 109044

150-152 Stanley Street WEST MELBOURNE VIC 3003



#### LEGEND

 Parcel Boundary



#### Action Plan

##### EAO Recommendation

**Apply EAO**

##### EAO Comment

Historical industrial/commercial building with documented or likely past industrial use with possible high potential for contamination.

#### Resources used to make decision



#### Site Use Summary

**Current Land Use**  
Commercial

**Historic Land Use**  
Other (unsure)

#### Key Information Supporting EAO Decision

Unknown current or past industrial use identified on site.

#### Additional Considerations

Arnett's not the biscuit company store and warehouse. 1987 aerial indicates current building on site.

#### Resources used to make decision

Site Inspection,  
MMBW Maps (1895),  
Historical aerial photographs,  
Current aerial photographs (May 2018)

WEST MELBOURNE EAO - AMENDMENT C309 -  
WEST MELBOURNE STRUCTURE PLAN:  
PRELIMINARY LAND CONTAMINATION ASSESSMENT

CITY OF MELBOURNE

**GIS ID: 6668**

#### COPYRIGHT

Aerial Imagery copyright  
City of Melbourne

0 5 10 20 30 40 50 metres

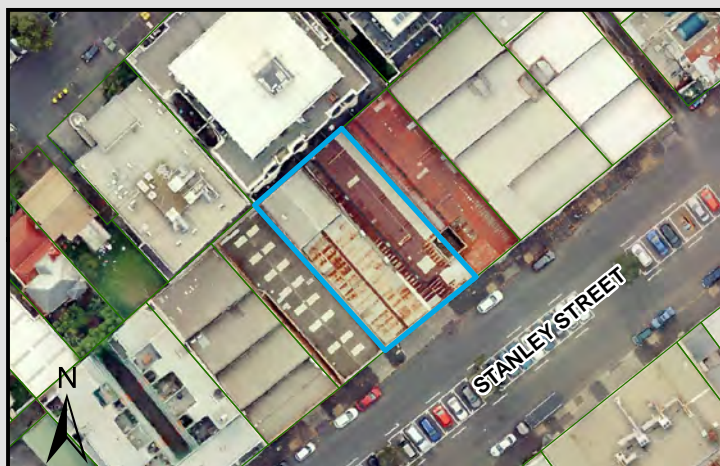
**SCALE (at A4) (BUILDING MAP) 1:1,000**  
DATUM GDA 94, PROJECTION MGA Zone 55

**PROJECT: 18113718**  
**DATE: 27 FEB 2019**  
**DRAWN: TPC**  
**CHECKED: IMK**



CoM Property ID: 109045

142-148 Stanley Street WEST MELBOURNE VIC 3003



#### LEGEND

 Parcel Boundary



#### Action Plan

##### EAO Recommendation

**Apply EAO**

##### EAO Comment

Site has been identified as being potentially contaminated in accordance with the Potentially Contaminated Land General Practice Note (DSE, 2005)

#### Resources used to make decision



#### Site Use Summary

**Current Land Use**  
Commercial

**Historic Land Use**  
Industrial

#### Key Information Supporting EAO Decision

Potentially contaminating land use/s identified on site as listed in the DSE General Practice Note (2005): Chemical Manufacturing/storage/blending

#### Additional Considerations

Formerly 'Fernshaws Pty. Ltd. manufacturing chemists'.

#### Resources used to make decision

West Melbourne Heritage Review Appendix 2 (May 2016), Site inspection, Historical aerial photographs (1968/9 & 1987)

WEST MELBOURNE EAO - AMENDMENT C309 -  
WEST MELBOURNE STRUCTURE PLAN:  
PRELIMINARY LAND CONTAMINATION ASSESSMENT

CITY OF MELBOURNE

**GIS ID: 6669**

#### COPYRIGHT

Aerial Imagery copyright  
City of Melbourne

0 5 10 20 30 40 50 metres

**SCALE (at A4) (BUILDING MAP) 1:1,300**  
DATUM GDA 94, PROJECTION MGA Zone 55

**PROJECT: 18113718**  
**DATE: 27 FEB 2019**  
**DRAWN: TPC**  
**CHECKED: IMK**





CoM Property ID: 109046

138-140 Stanley Street WEST MELBOURNE VIC 3003



#### LEGEND

 Parcel Boundary

#### Action Plan

##### EAO Recommendation

**Apply EAO**

##### EAO Comment

Site has been identified as being potentially contaminated in accordance with the Potentially Contaminated Land General Practice Note (DSE, 2005)

#### Site Use Summary

**Current Land Use**  
Industrial

**Historic Land Use**  
Industrial

##### Key Information Supporting EAO Decision

Potentially contaminating land use/s identified on site as listed in the DSE General Practice Note (2005): Timber preserving/treatment

##### Additional Considerations

Formerly 'Plywood and Trading Company Pty. Ltd.'.

#### Resources used to make decision



##### Resources used to make decision

West Melbourne Heritage Review Appendix 2 (May 2016), Site inspection, Historical aerial photographs (1968/9 & 1987), MMBW Maps (1895)

WEST MELBOURNE EAO - AMENDMENT C309 -  
WEST MELBOURNE STRUCTURE PLAN:  
PRELIMINARY LAND CONTAMINATION ASSESSMENT

CITY OF MELBOURNE

**GIS ID: 6670**

##### COPYRIGHT

Aerial Imagery copyright  
City of Melbourne

0 5 10 20 30 40 50 metres

**SCALE (at A4) (BUILDING MAP) 1:1,100**  
DATUM GDA 94, PROJECTION MGA Zone 55

**PROJECT: 18113718**  
**DATE: 27 FEB 2019**  
**DRAWN: TPC**  
**CHECKED: IMK**



CoM Property ID: 109047

130-136 Stanley Street WEST MELBOURNE VIC 3003



#### LEGEND

 Parcel Boundary



#### Action Plan

##### EAO Recommendation

**Apply EAO**

##### EAO Comment

Historical industrial/commercial building with documented or likely past industrial use with possible high potential for contamination.

#### Resources used to make decision



1987 Imagery

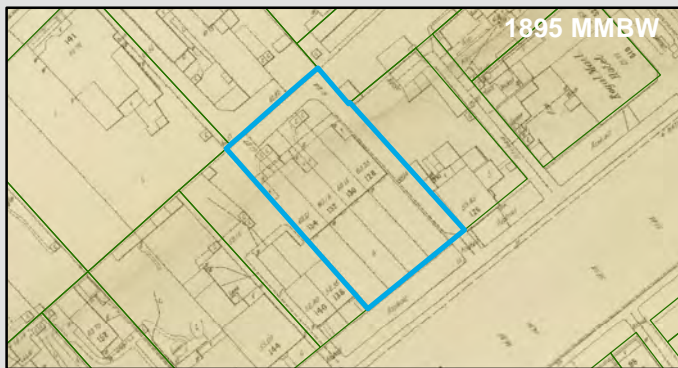
#### Site Use Summary

**Current Land Use**  
Commercial

**Historic Land Use**  
Industrial

#### Key Information Supporting EAO Decision

Unknown current or past industrial use identified on site.



1895 MMBW

#### Additional Considerations

Aerials show a saw tooth roof on site, which indicates likely past industrial use. 1987 aerial indicates current building onsite.

#### Resources used to make decision

Site Inspection,  
MMBW Maps (1895),  
Historical aerial photographs,  
Current aerial photographs (May 2018)

WEST MELBOURNE EAO - AMENDMENT C309 -  
WEST MELBOURNE STRUCTURE PLAN:  
PRELIMINARY LAND CONTAMINATION ASSESSMENT

CITY OF MELBOURNE

**GIS ID: 6671**

#### COPYRIGHT

Aerial Imagery copyright  
City of Melbourne

0 5 10 20 30 40 50 metres

**SCALE (at A4) (BUILDING MAP) 1:1,300**  
DATUM GDA 94, PROJECTION MGA Zone 55

**PROJECT: 18113718**  
**DATE: 27 FEB 2019**  
**DRAWN: TPC**  
**CHECKED: IMK**





Information contained on this drawing is the copyright of Golder Associates Pty. Ltd. Unauthorised use or reproduction of this plan either wholly or in part without written permission infringes copyright. © Golder Associates Pty. Ltd.

CoM Property ID: 109048

124-128 Stanley Street WEST MELBOURNE VIC 3003



#### LEGEND

 Parcel Boundary



#### Action Plan

##### EAO Recommendation

**Apply EAO**

##### EAO Comment

Historical industrial/commercial building with documented or likely past industrial use with possible high potential for contamination.

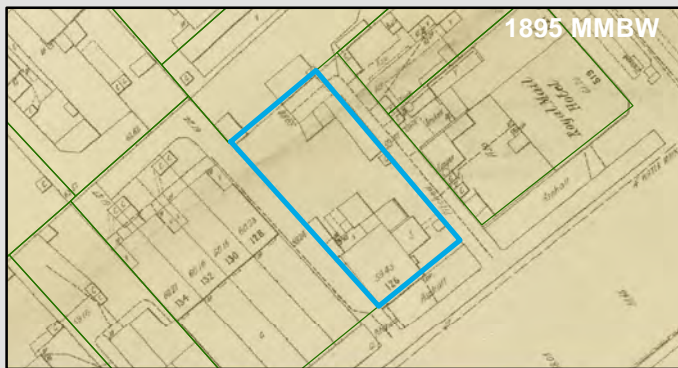
#### Resources used to make decision



#### Site Use Summary

**Current Land Use**  
Commercial

**Historic Land Use**  
Industrial



#### Key Information Supporting EAO Decision

Unknown current or past industrial use identified on site.

#### Additional Considerations

Aerials show a saw tooth roof on site, which indicates likely past industrial use. 1987 aerial indicates current building onsite, use unknown.

#### Resources used to make decision

Site Inspection,  
MMBW Maps (1895),  
Historical aerial photographs,  
Current aerial photographs (May 2018)

WEST MELBOURNE EAO - AMENDMENT C309 -  
WEST MELBOURNE STRUCTURE PLAN:  
PRELIMINARY LAND CONTAMINATION ASSESSMENT

CITY OF MELBOURNE

**GIS ID: 6672**

#### COPYRIGHT

Aerial Imagery copyright  
City of Melbourne

0 5 10 20 30 40 50 metres

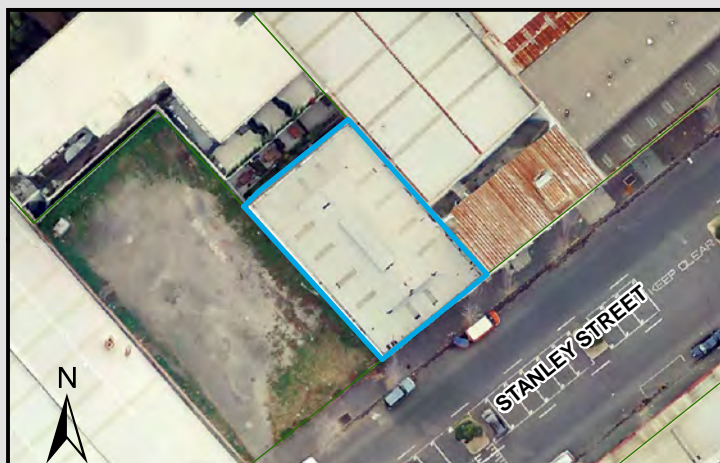
**SCALE (at A4) (BUILDING MAP) 1:1,000**  
DATUM GDA 94, PROJECTION MGA Zone 55

**PROJECT: 18113718**  
**DATE: 27 FEB 2019**  
**DRAWN: TPC**  
**CHECKED: IMK**



CoM Property ID: 109049

82-86 Stanley Street WEST MELBOURNE VIC 3003



#### LEGEND

 Parcel Boundary

#### Action Plan

##### EAO Recommendation

**Apply EAO**

##### EAO Comment

Site has been identified as being potentially contaminated in accordance with the Potentially Contaminated Land General Practice Note (DSE, 2005)

#### Site Use Summary

**Current Land Use**  
Industrial

**Historic Land Use**  
Industrial

##### Key Information Supporting EAO Decision

Potentially contaminating land use/s identified on site as listed in the DSE General Practice Note (2005): Automotive repair/engine works

##### Additional Considerations

UST or Filling at the site indicates potential for contamination.

#### Resources used to make decision



##### Resources used to make decision

Site inspection, Historical aerial photographs (1968/9 & 1987)

WEST MELBOURNE EAO - AMENDMENT C309 -  
WEST MELBOURNE STRUCTURE PLAN:  
PRELIMINARY LAND CONTAMINATION ASSESSMENT

CITY OF MELBOURNE

**GIS ID: 7740**

##### COPYRIGHT

Aerial Imagery copyright  
City of Melbourne

0 5 10 20 30 40 50 metres

**SCALE (at A4) (BUILDING MAP) 1:1,000**  
DATUM GDA 94, PROJECTION MGA Zone 55

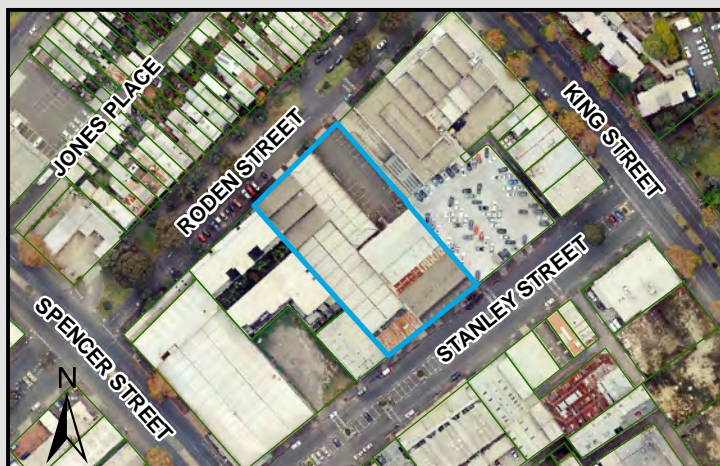
**PROJECT: 18113718**  
**DATE: 27 FEB 2019**  
**DRAWN: TPC**  
**CHECKED: IMK**





CoM Property ID: 109050

62-80 Stanley Street WEST MELBOURNE VIC 3003



#### LEGEND

 Parcel Boundary



#### Action Plan

##### EAO Recommendation

**Apply EAO**

##### EAO Comment

Historical industrial/commercial building with documented or likely past industrial use with possible high potential for contamination.

#### Site Use Summary

**Current Land Use**  
Commercial

**Historic Land Use**  
Industrial

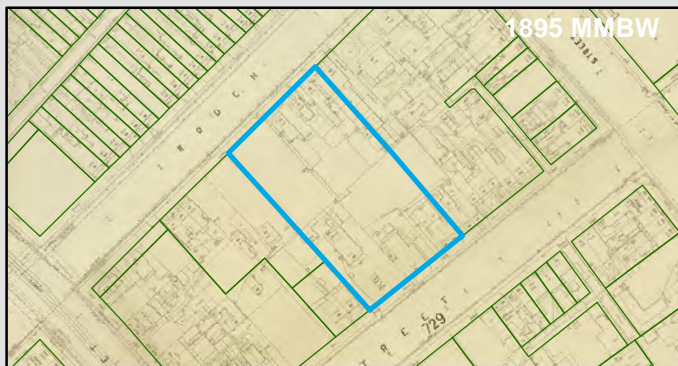
##### Key Information Supporting EAO Decision

Unknown current or past industrial use identified on site.

##### Additional Considerations

Metropolitan Fire & Emergency Services Board. Brick warehouse complex. 1987 Aerial shows a saw tooth roof on site, which indicates likely past industrial use

#### Resources used to make decision



##### Resources used to make decision

City of Melbourne interactive map (2019), West Melbourne Heritage Review Appendix 2 (May 2016), Site inspection, Historical aerial photographs (1968/9 & 1987)

WEST MELBOURNE EAO - AMENDMENT C309 -  
WEST MELBOURNE STRUCTURE PLAN:  
PRELIMINARY LAND CONTAMINATION ASSESSMENT

CITY OF MELBOURNE

**GIS ID: 7741**

##### COPYRIGHT

Aerial Imagery copyright  
City of Melbourne

0 15 30 60 90 120 150 metres

**SCALE (at A4) (BUILDING MAP) 1:3,300**  
DATUM GDA 94, PROJECTION MGA Zone 55

**PROJECT: 18113718**  
**DATE: 27 FEB 2019**  
**DRAWN: TPC**  
**CHECKED: IMK**



Information contained on this drawing is the copyright of Golder Associates Pty. Ltd. Unauthorised use or reproduction of this plan either wholly or in part without written permission infringes copyright. © Golder Associates Pty. Ltd.

CoM Property ID: 109153

513-521 Victoria Street WEST MELBOURNE VIC 3003



#### LEGEND

 Parcel Boundary



#### Action Plan

##### EAO Recommendation

**Apply EAO**

##### EAO Comment

Historical industrial/commercial building with documented or likely past industrial use with possible high potential for contamination.

#### Resources used to make decision



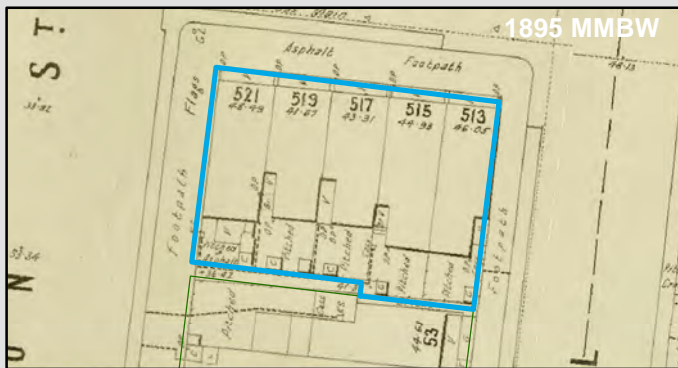
#### Site Use Summary

**Current Land Use**  
Commercial

**Historic Land Use**  
Residential

#### Key Information Supporting EAO Decision

Unknown current or past industrial use identified on site.



#### Additional Considerations

Pure Zone International is recognised as a Linen company. Not confirmed whether offices, storage or factory. 1895 plan indicates residential. 1987 aerial indicates two residential buildings demolished. Currently warehouse type building onsite.

#### Resources used to make decision

Site inspection, Historical aerial photographs (1968/9 & 1987)

WEST MELBOURNE EAO - AMENDMENT C309 -  
WEST MELBOURNE STRUCTURE PLAN:  
PRELIMINARY LAND CONTAMINATION ASSESSMENT

CITY OF MELBOURNE

**GIS ID: 14315**

#### COPYRIGHT

Aerial Imagery copyright  
City of Melbourne

0 3.5 7 14 21 28 35 metres

**SCALE (at A4) (BUILDING MAP) 1:700**  
DATUM GDA 94, PROJECTION MGA Zone 55

**PROJECT: 18113718**  
**DATE: 27 FEB 2019**  
**DRAWN: TPC**  
**CHECKED: IMK**





CoM Property ID: 109154

36-56 Stawell Street WEST MELBOURNE VIC 3003



#### LEGEND

 Parcel Boundary



#### Action Plan

##### EAO Recommendation

**Apply EAO**

##### EAO Comment

Historical industrial/commercial building with documented or likely past industrial use with possible high potential for contamination.

#### Resources used to make decision



#### Site Use Summary

**Current Land Use**  
Commercial

**Historic Land Use**  
Commercial



#### Key Information Supporting EAO Decision

Unknown current or past industrial use identified on site.

#### Additional Considerations

Two co-joined 2 storey brick warehouses. Built and subdivided in 1998. 1895 plan indicates residential. 1987 aerial indicates site demolished for a carpark. Likely low potential.

#### Resources used to make decision

City of Melbourne interactive map (2019), West Melbourne Heritage Review Appendix 2 (May 2016), Site inspection, Historical aerial photographs (1968/9 & 1987)

WEST MELBOURNE EAO - AMENDMENT C309 -  
WEST MELBOURNE STRUCTURE PLAN:  
PRELIMINARY LAND CONTAMINATION ASSESSMENT

CITY OF MELBOURNE

**GIS ID: 14313**

#### COPYRIGHT

Aerial Imagery copyright  
City of Melbourne

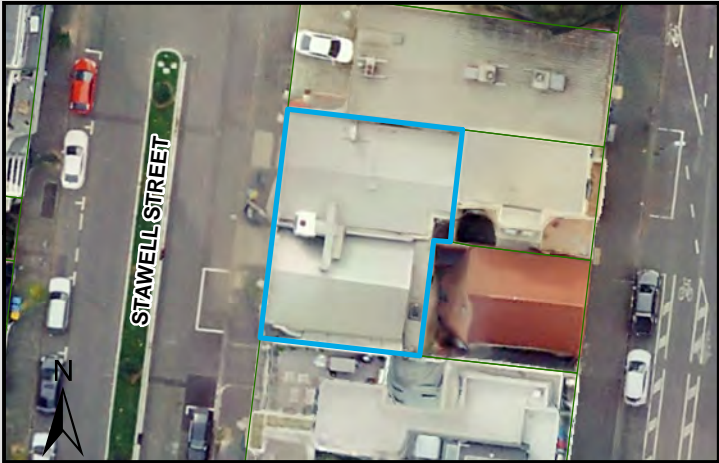
0 5 10 20 30 40 50 metres

**SCALE (at A4) (BUILDING MAP) 1:1,900**  
DATUM GDA 94, PROJECTION MGA Zone 55


**PROJECT: 18113718**  
**DATE: 27 FEB 2019**  
**DRAWN: TPC**  
**CHECKED: IMK**



Information contained on this drawing is the copyright of Golder Associates Pty. Ltd. Unauthorised use or reproduction of this plan either wholly or in part without written permission infringes copyright. © Golder Associates Pty. Ltd.



LEGEND

 Parcel Boundary

Action Plan

EAO Recommendation

Apply EAO

EAO Comment

Historical industrial/commercial building with documented or likely past industrial use with possible high potential for contamination.

Site Use Summary

Current Land Use  
Commercial

Historic Land Use  
Industrial

Key Information Supporting EAO Decision

Unknown current or past industrial use identified on site.

Additional Considerations

Building shape indicates old manufacturing industry.

Resources used to make decision



Resources used to make decision

West Melbourne Heritage Review Appendix 2 (May 2016), Site inspection, Historical aerial photographs (1968/9 & 1987)

WEST MELBOURNE EAO - AMENDMENT C309 -  
WEST MELBOURNE STRUCTURE PLAN:  
PRELIMINARY LAND CONTAMINATION ASSESSMENT

CITY OF MELBOURNE

GIS ID: 14302

COPYRIGHT  
Aerial Imagery copyright  
City of Melbourne

0 3 6 12 18 24 30 metres  
SCALE (at A4) (BUILDING MAP) 1:600  
DATUM GDA 94, PROJECTION MGA Zone 55  
PROJECT: 18113718  
DATE: 27 FEB 2019  
DRAWN: TPC  
CHECKED: IMK





CoM Property ID: 109688

201-203 Victoria Street WEST MELBOURNE VIC 3003



#### LEGEND

 Parcel Boundary



### Action Plan

#### EAO Recommendation

**Apply EAO**

#### EAO Comment

Historical industrial/commercial building with documented or likely past industrial use with possible high potential for contamination.

### Resources used to make decision



### Site Use Summary

**Current Land Use**  
Commercial

**Historic Land Use**  
Commercial

#### Key Information Supporting EAO Decision

Unknown current or past industrial use identified on site.



#### Additional Considerations

Company name listed - "William Hughes' warehouse"

#### Resources used to make decision

West Melbourne Heritage Review Appendix 2 (May 2016), Site inspection, Historical aerial photographs (1968/9 & 1987)

WEST MELBOURNE EAO - AMENDMENT C309 -  
WEST MELBOURNE STRUCTURE PLAN:  
PRELIMINARY LAND CONTAMINATION ASSESSMENT

CITY OF MELBOURNE

**GIS ID: 7411**

#### COPYRIGHT

Aerial Imagery copyright  
City of Melbourne

0 4.5 9 18 27 36 45 metres

**SCALE (at A4) (BUILDING MAP) 1:900**  
DATUM GDA 94, PROJECTION MGA Zone 55

**PROJECT: 18113718**  
**DATE: 27 FEB 2019**  
**DRAWN: TPC**  
**CHECKED: IMK**



CoM Property ID: 109692

211 Victoria Street WEST MELBOURNE VIC 3003



#### LEGEND

 Parcel Boundary



#### Action Plan

##### EAO Recommendation

**Apply EAO**

##### EAO Comment

Site has been identified as being potentially contaminated in accordance with the Potentially Contaminated Land General Practice Note (DSE, 2005)

#### Site Use Summary

**Current Land Use**  
Commercial

**Historic Land Use**  
Industrial

#### Key Information Supporting EAO Decision

Potentially contaminating land use/s identified on site as listed in the DSE General Practice Note (2005): Dry Cleaning

#### Additional Considerations

#### Resources used to make decision



#### Resources used to make decision

Site inspection, Historical aerial photographs (1968/9 & 1987), MMBW Maps (1895)

WEST MELBOURNE EAO - AMENDMENT C309 -  
WEST MELBOURNE STRUCTURE PLAN:  
PRELIMINARY LAND CONTAMINATION ASSESSMENT

CITY OF MELBOURNE

**GIS ID: 7415**

#### COPYRIGHT

Aerial Imagery copyright  
City of Melbourne

0 4 8 16 24 32 40 metres

**SCALE (at A4) (BUILDING MAP) 1:800**  
DATUM GDA 94, PROJECTION MGA Zone 55

**PROJECT: 18113718**  
**DATE: 27 FEB 2019**  
**DRAWN: TPC**  
**CHECKED: IMK**






Information contained on this drawing is the copyright of Golder Associates Pty. Ltd. Unauthorised use or reproduction of this plan either wholly or in part without written permission infringes copyright. © Golder Associates Pty. Ltd.



LEGEND

 Parcel Boundary



Action Plan

EAO Recommendation

**Apply EAO**

EAO Comment

Historical industrial/commercial building with documented or likely past industrial use with possible high potential for contamination.

Resources used to make decision



Site Use Summary

**Current Land Use**  
Commercial

**Historic Land Use**  
Commercial

Key Information Supporting EAO Decision

Unknown current or past industrial use identified on site.



Additional Considerations

Formerly Allison undertaking premises.

Resources used to make decision

West Melbourne Heritage Review Appendix 2 (May 2016), Site inspection, Historical aerial photographs (1968/9 & 1987)

WEST MELBOURNE EAO - AMENDMENT C309 -  
WEST MELBOURNE STRUCTURE PLAN:  
PRELIMINARY LAND CONTAMINATION ASSESSMENT

CITY OF MELBOURNE

**GIS ID: 7484**

**COPYRIGHT**  
Aerial Imagery copyright  
City of Melbourne

0 3.5 7 14 21 28 35 metres

**SCALE (at A4) (BUILDING MAP) 1:700**  
DATUM GDA 94, PROJECTION MGA Zone 55

**PROJECT: 18113718**  
**DATE: 27 FEB 2019**  
**DRAWN: TPC**  
**CHECKED: IMK**



CoM Property ID: 109696

221 Victoria Street WEST MELBOURNE VIC 3003



#### LEGEND

 Parcel Boundary



#### Action Plan

##### EAO Recommendation

**Apply EAO**

##### EAO Comment

Historical industrial/commercial building with documented or likely past industrial use with possible high potential for contamination.

#### Site Use Summary

**Current Land Use**  
Commercial

**Historic Land Use**  
Commercial

#### Key Information Supporting EAO Decision

Unknown current or past industrial use identified on site.

#### Additional Considerations

Formerly Allison undertaking premises.

#### Resources used to make decision



#### Resources used to make decision

West Melbourne Heritage Review Appendix 2 (May 2016), Site inspection, Historical aerial photographs (1968/9 & 1987)

WEST MELBOURNE EAO - AMENDMENT C309 -  
WEST MELBOURNE STRUCTURE PLAN:  
PRELIMINARY LAND CONTAMINATION ASSESSMENT

CITY OF MELBOURNE

**GIS ID: 7418**

#### COPYRIGHT

Aerial Imagery copyright  
City of Melbourne

0 3.5 7 14 21 28 35 metres

**SCALE (at A4) (BUILDING MAP) 1:700**

DATUM GDA 94, PROJECTION MGA Zone 55

**PROJECT: 18113718**  
**DATE: 27 FEB 2019**  
**DRAWN: TPC**  
**CHECKED: IMK**





Information contained on this drawing is the copyright of Golder Associates Pty. Ltd. Unauthorised use or reproduction of this plan either wholly or in part without written permission infringes copyright. © Golder Associates Pty. Ltd.

CoM Property ID: 109698

225-229 Victoria Street WEST MELBOURNE VIC 3003



LEGEND

Parcel Boundary



Action Plan

EAO Recommendation

Apply EAO

EAO Comment

Historical industrial/commercial building with documented or likely past industrial use with possible high potential for contamination.

Site Use Summary

Current Land Use  
Commercial

Historic Land Use  
Commercial

Key Information Supporting EAO Decision

Unknown current or past industrial use identified on site.

Additional Considerations

Company name listed - "Boyle's Chemist shop".

Resources used to make decision



Resources used to make decision

West Melbourne Heritage Review Appendix 2 (May 2016), Site inspection, Historical aerial photographs (1968/9 & 1987)

WEST MELBOURNE EAO - AMENDMENT C309 -  
WEST MELBOURNE STRUCTURE PLAN:  
PRELIMINARY LAND CONTAMINATION ASSESSMENT

CITY OF MELBOURNE

GIS ID: 7420

COPYRIGHT

Aerial Imagery copyright  
City of Melbourne

0 4 8 16 24 32 40 metres

SCALE (at A4) (BUILDING MAP) 1:800  
DATUM GDA 94, PROJECTION MGA Zone 55


PROJECT: 18113718  
DATE: 27 FEB 2019  
DRAWN: TPC  
CHECKED: IMK



Information contained on this drawing is the copyright of Golder Associates Pty. Ltd. Unauthorised use or reproduction of this plan either wholly or in part without written permission infringes copyright. © Golder Associates Pty. Ltd.



LEGEND

 Parcel Boundary

Action Plan

EAO Recommendation

Apply EAO

EAO Comment

Site has been identified as being potentially contaminated in accordance with the Potentially Contaminated Land General Practice Note (DSE, 2005)

Site Use Summary

Current Land Use  
Commercial

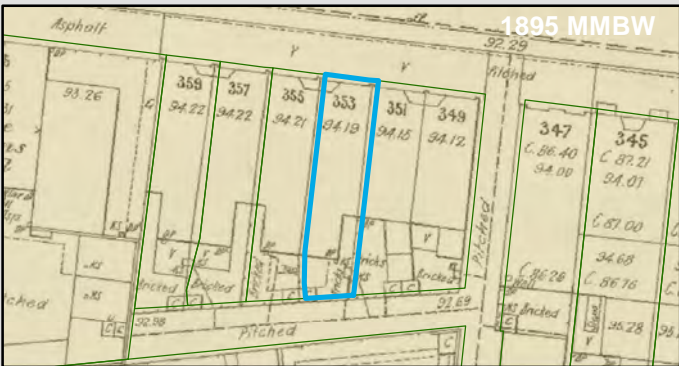
Historic Land Use  
Industrial

Key Information Supporting EAO Decision

Potentially contaminating land use/s identified on site as listed in the DSE General Practice Note (2005): Dry Cleaning

Additional Considerations

Resources used to make decision



Resources used to make decision

Site inspection, Historical aerial photographs (1968/9 & 1987), MMBW Maps (1895)

WEST MELBOURNE EAO - AMENDMENT C309 -  
WEST MELBOURNE STRUCTURE PLAN:  
PRELIMINARY LAND CONTAMINATION ASSESSMENT

CITY OF MELBOURNE

GIS ID: 7590

COPYRIGHT  
Aerial Imagery copyright  
City of Melbourne

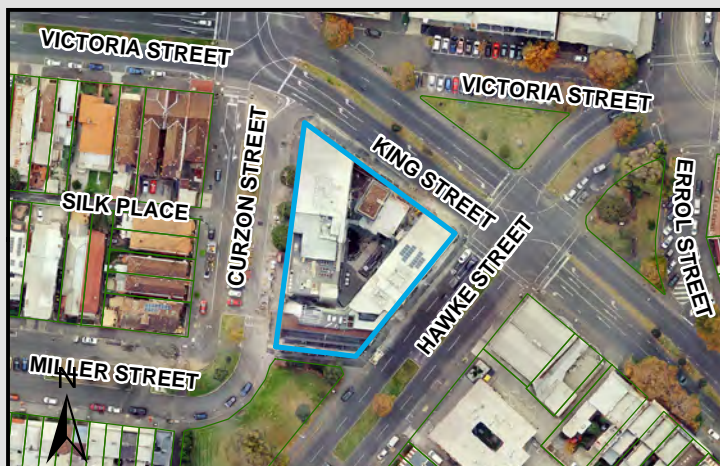
0 3 6 12 18 24 30 metres  
SCALE (at A4) (BUILDING MAP) 1:600  
DATUM GDA 94, PROJECTION MGA Zone 55  
PROJECT: 18113718  
DATE: 27 FEB 2019  
DRAWN: TPC  
CHECKED: IMK





CoM Property ID: 109722

18-30B Curzon Street WEST MELBOURNE VIC 3003



#### LEGEND

 Parcel Boundary



#### Action Plan

##### EAO Recommendation

**Apply EAO**

##### EAO Comment

Site has been issued with a Statement of Environmental Audit with Conditions that require ongoing management for sensitive uses. (Carms No. 66412-2)

#### Site Use Summary

**Current Land Use**  
Residential

**Historic Land Use**  
Industrial

#### Key Information Supporting EAO Decision

Potentially contaminating land use/s identified on site as listed in the DSE General Practice Note (2005): Service station/fuel storage

#### Additional Considerations

#### Resources used to make decision



#### Resources used to make decision

Site inspection, Historical aerial photographs (1968/9 & 1987), EPA Audits (53X and 53V)

WEST MELBOURNE EAO - AMENDMENT C309 -  
WEST MELBOURNE STRUCTURE PLAN:  
PRELIMINARY LAND CONTAMINATION ASSESSMENT

CITY OF MELBOURNE

**GIS ID: 6693**

#### COPYRIGHT

Aerial Imagery copyright  
City of Melbourne

0 10 20 40 60 80 100 metres

**SCALE (at A4) (BUILDING MAP) 1:2,400**  
DATUM GDA 94, PROJECTION MGA Zone 55

**PROJECT: 18113718**  
**DATE: 27 FEB 2019**  
**DRAWN: TPC**  
**CHECKED: IMK**



Information contained on this drawing is the copyright of Golder Associates Pty. Ltd. Unauthorised use or reproduction of this plan either wholly or in part without written permission infringes copyright. © Golder Associates Pty. Ltd.

CoM Property ID: 109746

451-455 Victoria Street WEST MELBOURNE VIC 3003



#### LEGEND

 Parcel Boundary



### Action Plan

#### EAO Recommendation

**Apply EAO**

#### EAO Comment

Site has been identified as being potentially contaminated in accordance with the Potentially Contaminated Land General Practice Note (DSE, 2005)

### Resources used to make decision

### Site Use Summary

**Current Land Use**  
Commercial

**Historic Land Use**  
Industrial



#### Key Information Supporting EAO Decision

Potentially contaminating land use/s identified on site as listed in the DSE General Practice Note (2005): Automotive repair/engine works



#### Additional Considerations

Yellow Pages indicates motor garage on the corner of Abbotsford and Victoria St in 1990.

#### Resources used to make decision

Publicly available Melbourne Street Directories (Yellow Pages 1990, Urban Business Directory 1975/6 & 1984), Site inspection, Historical aerial photographs (1968/9 & 1987)

WEST MELBOURNE EAO - AMENDMENT C309 -  
WEST MELBOURNE STRUCTURE PLAN:  
PRELIMINARY LAND CONTAMINATION ASSESSMENT

CITY OF MELBOURNE

**GIS ID: 8501**

#### COPYRIGHT

Aerial Imagery copyright  
City of Melbourne

0 2.5 5 10 15 20 25 metres

**SCALE (at A4) (BUILDING MAP) 1:500**  
DATUM GDA 94, PROJECTION MGA Zone 55

**PROJECT: 18113718**  
**DATE: 27 FEB 2019**  
**DRAWN: TPC**  
**CHECKED: IMK**





Information contained on this drawing is the copyright of Golder Associates Pty. Ltd. Unauthorised use or reproduction of this plan either wholly or in part without written permission infringes copyright. © Golder Associates Pty. Ltd.

CoM Property ID: 109747

457-459 Victoria Street WEST MELBOURNE VIC 3003



#### LEGEND

 Parcel Boundary



### Action Plan

#### EAO Recommendation

**Apply EAO**

#### EAO Comment

Site is subject to potential contamination from an offsite source.

### Resources used to make decision

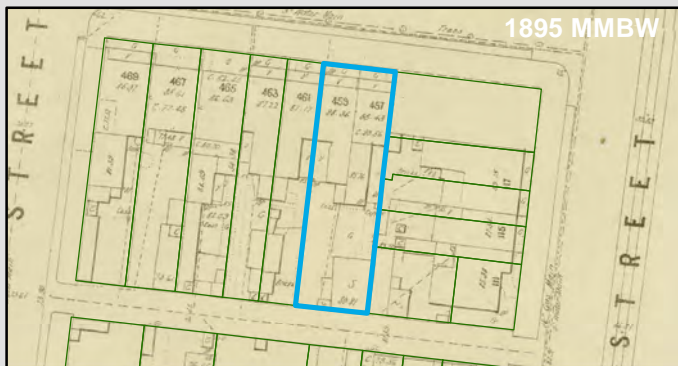


1987 Imagery

### Site Use Summary

**Current Land Use**  
Residential

**Historic Land Use**  
Residential



1895 MMBW

#### Key Information Supporting EAO Decision

Research indicates this site has currently and previously been used for residential purposes.

#### Additional Considerations

#### Resources used to make decision

Site inspection, Historical aerial photographs (1968/9 & 1987)

WEST MELBOURNE EAO - AMENDMENT C309 -  
WEST MELBOURNE STRUCTURE PLAN:  
PRELIMINARY LAND CONTAMINATION ASSESSMENT

CITY OF MELBOURNE

**GIS ID: 8502**

#### COPYRIGHT

Aerial Imagery copyright  
City of Melbourne

0 5 10 20 30 40 50 metres

**SCALE (at A4) (BUILDING MAP) 1:1,100**  
DATUM GDA 94, PROJECTION MGA Zone 55

**PROJECT: 18113718**  
**DATE: 27 FEB 2019**  
**DRAWN: TPC**  
**CHECKED: IMK**



Information contained on this drawing is the copyright of Golder Associates Pty. Ltd. Unauthorised use or reproduction of this plan either wholly or in part without written permission infringes copyright. © Golder Associates Pty. Ltd.

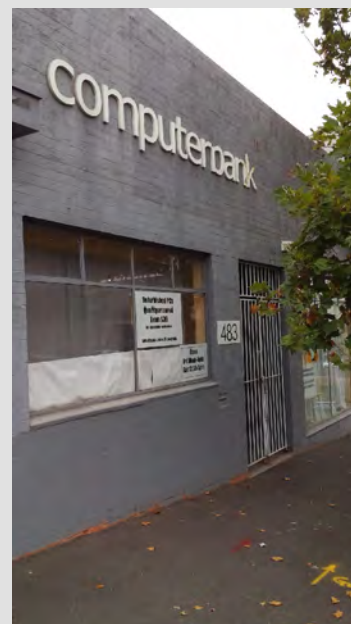
CoM Property ID: 109754

481-485 Victoria Street WEST MELBOURNE VIC 3003



#### LEGEND

 Parcel Boundary



#### Action Plan

##### EAO Recommendation

**Apply EAO**

##### EAO Comment

Historical industrial/commercial building with documented or likely past industrial use with possible high potential for contamination.

#### Site Use Summary

**Current Land Use**  
Commercial

**Historic Land Use**  
Other (unsure)

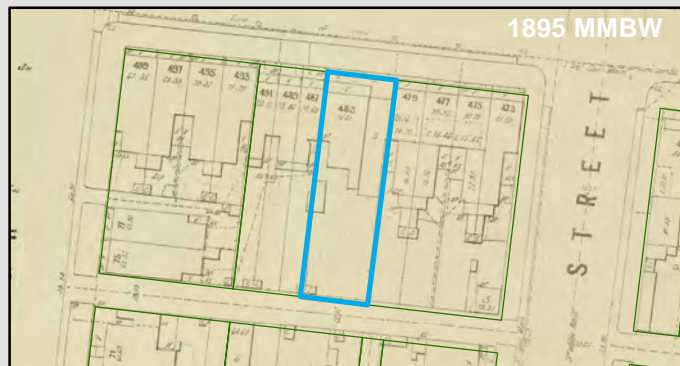
#### Key Information Supporting EAO Decision

Unknown current or past industrial use identified on site.

#### Additional Considerations

1969 aerial shows current building, which is a typical warehouse shape. Previous site use unknown, currently occupied by "Computerbank" offices.

#### Resources used to make decision



#### Resources used to make decision

Site inspection, Historical aerial photographs (1968/9 & 1987)

WEST MELBOURNE EAO - AMENDMENT C309 -  
WEST MELBOURNE STRUCTURE PLAN:  
PRELIMINARY LAND CONTAMINATION ASSESSMENT

CITY OF MELBOURNE

**GIS ID: 14293**

#### COPYRIGHT

Aerial Imagery copyright  
City of Melbourne

0 5 10 20 30 40 50 metres

**SCALE (at A4) (BUILDING MAP) 1:1,200**  
DATUM GDA 94, PROJECTION MGA Zone 55

**PROJECT: 18113718**  
**DATE: 27 FEB 2019**  
**DRAWN: TPC**  
**CHECKED: IMK**





Information contained on this drawing is the copyright of Golder Associates Pty. Ltd. Unauthorised use or reproduction of this plan either wholly or in part without written permission infringes copyright. © Golder Associates Pty. Ltd.

CoM Property ID: 109755

487-491 Victoria Street WEST MELBOURNE VIC 3003



#### LEGEND

 Parcel Boundary



#### Action Plan

##### EAO Recommendation

**Apply EAO**

##### EAO Comment

Site has been identified as being potentially contaminated in accordance with the Potentially Contaminated Land General Practice Note (DSE, 2005)

#### Site Use Summary

**Current Land Use**  
Industrial

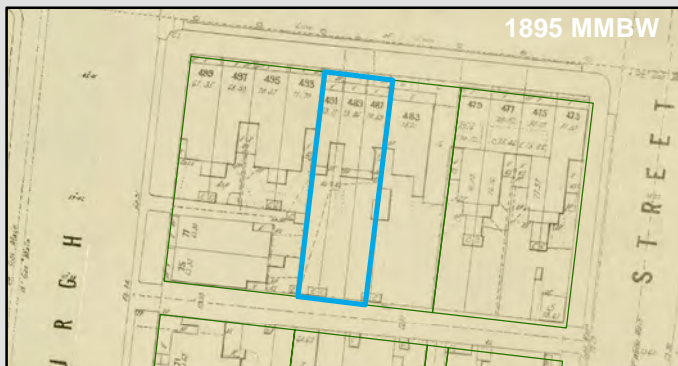
**Historic Land Use**  
Industrial

#### Key Information Supporting EAO Decision

Potentially contaminating land use/s identified on site as listed in the DSE General Practice Note (2005): Automotive repair/engine works

#### Additional Considerations

#### Resources used to make decision



#### Resources used to make decision

Site inspection, Historical aerial photographs (1968/9 & 1987)

WEST MELBOURNE EAO - AMENDMENT C309 -  
WEST MELBOURNE STRUCTURE PLAN:  
PRELIMINARY LAND CONTAMINATION ASSESSMENT

CITY OF MELBOURNE

**GIS ID: 14294**

#### COPYRIGHT

Aerial Imagery copyright  
City of Melbourne

0 5 10 20 30 40 50 metres

**SCALE (at A4) (BUILDING MAP) 1:1,200**  
DATUM GDA 94, PROJECTION MGA Zone 55


**PROJECT: 18113718**  
**DATE: 27 FEB 2019**  
**DRAWN: TPC**  
**CHECKED: IMK**



Information contained on this drawing is the copyright of Golder Associates Pty. Ltd. Unauthorised use or reproduction of this plan either wholly or in part without written permission infringes copyright. © Golder Associates Pty. Ltd.



LEGEND

 Parcel Boundary



Action Plan

EAO Recommendation

**Apply EAO**

EAO Comment

Historical industrial/commercial building with documented or likely past industrial use with possible high potential for contamination.

Resources used to make decision



1987 Imagery

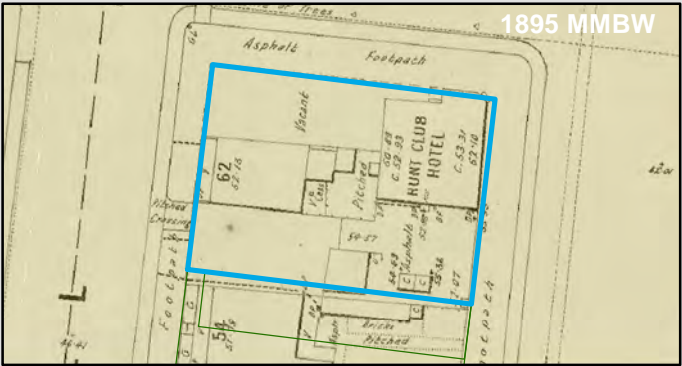
Site Use Summary

**Current Land Use**  
Commercial

**Historic Land Use**  
Residential

Key Information Supporting EAO Decision

Unknown current or past industrial use identified on site.



1895 MMBW

Additional Considerations

1895 plan indicates part of site 'Hunt Club Hotel'. Historical aerials show current building constructed post 1987. Potential paint storage - 'McPeake Painting and building services'

Resources used to make decision

Site inspection, Historical aerial photographs (1968/9 & 1987)

WEST MELBOURNE EAO - AMENDMENT C309 -  
WEST MELBOURNE STRUCTURE PLAN:  
PRELIMINARY LAND CONTAMINATION ASSESSMENT

CITY OF MELBOURNE

**GIS ID: 14291**

**COPYRIGHT**  
Aerial Imagery copyright  
City of Melbourne

0 3.5 7 14 21 28 35 metres  
**SCALE (at A4) (BUILDING MAP) 1:700**  
DATUM GDA 94, PROJECTION MGA Zone 55  
**PROJECT: 18113718**  
**DATE: 27 FEB 2019**  
**DRAWN: TPC**  
**CHECKED: IMK**





Information contained on this drawing is the copyright of Golder Associates Pty. Ltd. Unauthorised use or reproduction of this plan either wholly or in part without written permission infringes copyright. © Golder Associates Pty. Ltd.

CoM Property ID: 109945

47-49 Walsh Street WEST MELBOURNE VIC 3003



#### LEGEND

 Parcel Boundary

#### Action Plan

##### EAO Recommendation

**Apply EAO**

##### EAO Comment

Historical industrial/commercial building with documented or likely past industrial use with possible high potential for contamination.

#### Resources used to make decision



#### Site Use Summary

##### Current Land Use

Other (unsure)

##### Historic Land Use

Other (unsure)

#### Key Information Supporting EAO Decision

Unknown current or past industrial use identified on site.

#### Additional Considerations

Building visible in historical aerials has been demolished.

#### Resources used to make decision

Site inspection, Historical aerial photographs (1968/9 & 1987)

WEST MELBOURNE EAO - AMENDMENT C309 -  
WEST MELBOURNE STRUCTURE PLAN:  
PRELIMINARY LAND CONTAMINATION ASSESSMENT

CITY OF MELBOURNE

**GIS ID: 7725**

#### COPYRIGHT

Aerial Imagery copyright  
City of Melbourne

0 4 8 16 24 32 40 metres

**SCALE (at A4) (BUILDING MAP) 1:800**  
DATUM GDA 94, PROJECTION MGA Zone 55

**PROJECT: 18113718**  
**DATE: 27 FEB 2019**  
**DRAWN: TPC**  
**CHECKED: IMK**





Information contained on this drawing is the copyright of Golder Associates Pty. Ltd. Unauthorised use or reproduction of this plan either wholly or in part without written permission infringes copyright. © Golder Associates Pty. Ltd.



LEGEND

 Parcel Boundary



Action Plan		Resources used to make decision	
<div><div>EAO Recommendation</div><div>Apply EAO</div></div>		<div><div>1987 Imagery</div></div> <div><div>1895 MMBW</div></div>	
Site Use Summary			
<div><div>Current Land Use</div><div>Residential</div></div>	<div><div>Historic Land Use</div><div>Commercial</div></div>		
<div><div>Key Information Supporting EAO Decision</div><div>Unknown current or past industrial use identified on site.</div></div>			
<div><div>Additional Considerations</div><div>Large pool on site. Potential chemical storage.</div></div>		<div><div>Resources used to make decision</div><div>Site inspection, Historical aerial photographs (1968/9 &amp; 1987)</div></div>	

WEST MELBOURNE EAO - AMENDMENT C309 -  
WEST MELBOURNE STRUCTURE PLAN:  
PRELIMINARY LAND CONTAMINATION ASSESSMENT

CITY OF MELBOURNE

GIS ID: 7705

COPYRIGHT  
Aerial Imagery copyright  
City of Melbourne

0 5 10 20 30 40 50 metres  
SCALE (at A4) (BUILDING MAP) 1:1,600  
DATUM GDA 94, PROJECTION MGA Zone 55  
PROJECT: 18113718  
DATE: 27 FEB 2019  
DRAWN: TPC  
CHECKED: IMK





Information contained on this drawing is the copyright of Golder Associates Pty. Ltd. Unauthorised use or reproduction of this plan either wholly or in part without written permission infringes copyright. © Golder Associates Pty. Ltd.

CoM Property ID: 110115

351-353 William Street WEST MELBOURNE VIC 3003



#### LEGEND

 Parcel Boundary



#### Action Plan

##### EAO Recommendation

**Apply EAO**

##### EAO Comment

Site has been identified as being potentially contaminated in accordance with the Potentially Contaminated Land General Practice Note (DSE, 2005)

#### Site Use Summary

**Current Land Use**  
Commercial

**Historic Land Use**  
Industrial

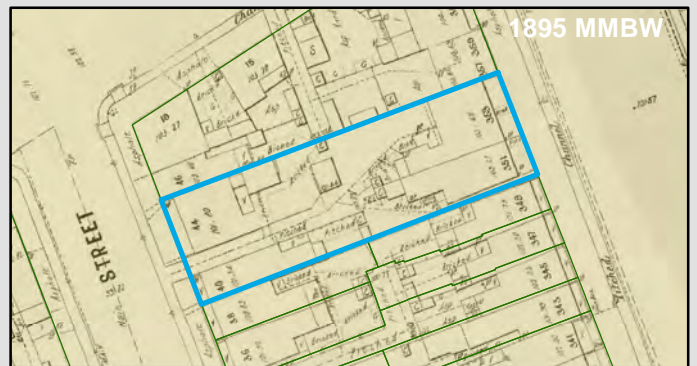
##### Key Information Supporting EAO Decision

Potentially contaminating land use/s identified on site as listed in the DSE General Practice Note (2005): Textile operations

##### Additional Considerations

Formerly 'Cellular Clothing Company Ltd. works'

#### Resources used to make decision



##### Resources used to make decision

West Melbourne Heritage Review Appendix 2 (May 2016), Site inspection, Historical aerial photographs (1968/9 & 1987)

WEST MELBOURNE EAO - AMENDMENT C309 -  
WEST MELBOURNE STRUCTURE PLAN:  
PRELIMINARY LAND CONTAMINATION ASSESSMENT

CITY OF MELBOURNE

**GIS ID: 7698**

##### COPYRIGHT

Aerial Imagery copyright  
City of Melbourne

0 5 10 20 30 40 50 metres

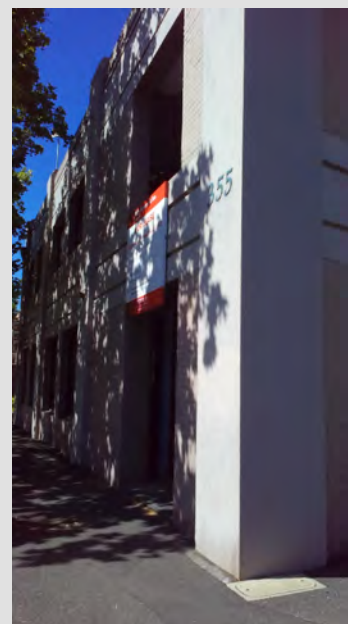
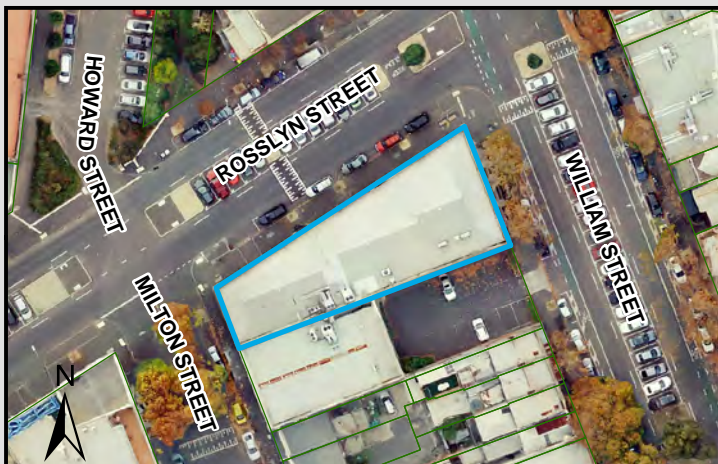
**SCALE (at A4) (BUILDING MAP) 1:1,100**  
DATUM GDA 94, PROJECTION MGA Zone 55

**PROJECT: 18113718**  
**DATE: 27 FEB 2019**  
**DRAWN: TPC**  
**CHECKED: IMK**



CoM Property ID: 110116

355-365 William Street WEST MELBOURNE VIC 3003



#### LEGEND

 Parcel Boundary

#### Action Plan

##### EAO Recommendation

**Apply EAO**

##### EAO Comment

Site has been identified as being potentially contaminated in accordance with the Potentially Contaminated Land General Practice Note (DSE, 2005)

#### Site Use Summary

**Current Land Use**  
Commercial

**Historic Land Use**  
Industrial

##### Key Information Supporting EAO Decision

Potentially contaminating land use/s identified on site as listed in the DSE General Practice Note (2005): Textile operations

##### Additional Considerations

Formerly Demco Machinery Company Pty. Ltd. machinery merchants and Ansett Knitting Mills Pty. Ltd.

#### Resources used to make decision



##### Resources used to make decision

West Melbourne Heritage Review Appendix 2 (May 2016), Site inspection, Historical aerial photographs (1968/9 & 1987)

WEST MELBOURNE EAO - AMENDMENT C309 -  
WEST MELBOURNE STRUCTURE PLAN:  
PRELIMINARY LAND CONTAMINATION ASSESSMENT

CITY OF MELBOURNE

**GIS ID: 7699**

##### COPYRIGHT

Aerial Imagery copyright  
City of Melbourne

0 5 10 20 30 40 50 metres

**SCALE (at A4) (BUILDING MAP) 1:1,300**  
DATUM GDA 94, PROJECTION MGA Zone 55

**PROJECT: 18113718**  
**DATE: 27 FEB 2019**  
**DRAWN: TPC**  
**CHECKED: IMK**





CoM Property ID: 110117

369-381 William Street WEST MELBOURNE VIC 3003



#### LEGEND

 Parcel Boundary



#### Action Plan

##### EAO Recommendation

**Apply EAO**

##### EAO Comment

Site has been identified as being potentially contaminated in accordance with the Potentially Contaminated Land General Practice Note (DSE, 2005)

#### Site Use Summary

##### Current Land Use

Other (unsure)

##### Historic Land Use

Other (unsure)

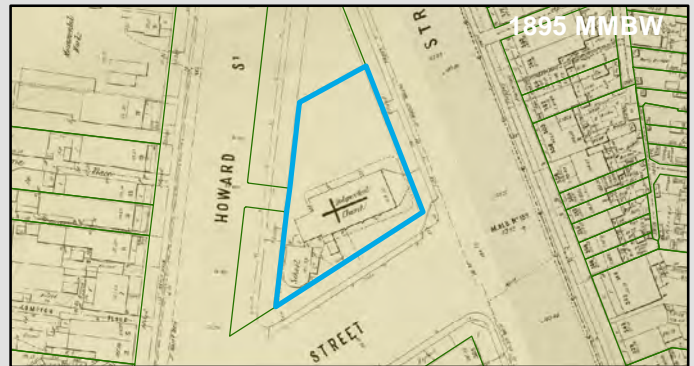
##### Key Information Supporting EAO Decision

Potentially contaminating land use/s identified on site as listed in the DSE General Practice Note (2005): Underground storage tank (Medium Potential)

##### Additional Considerations

Site currently under environmental investigation. Groundwater wells, borehole scaring and triple interceptor traps visible.

#### Resources used to make decision



##### Resources used to make decision

Site inspection, Historical aerial photographs (1968/9 & 1987)

WEST MELBOURNE EAO - AMENDMENT C309 -  
WEST MELBOURNE STRUCTURE PLAN:  
PRELIMINARY LAND CONTAMINATION ASSESSMENT

CITY OF MELBOURNE

**GIS ID: 13641**

##### COPYRIGHT

Aerial Imagery copyright  
City of Melbourne

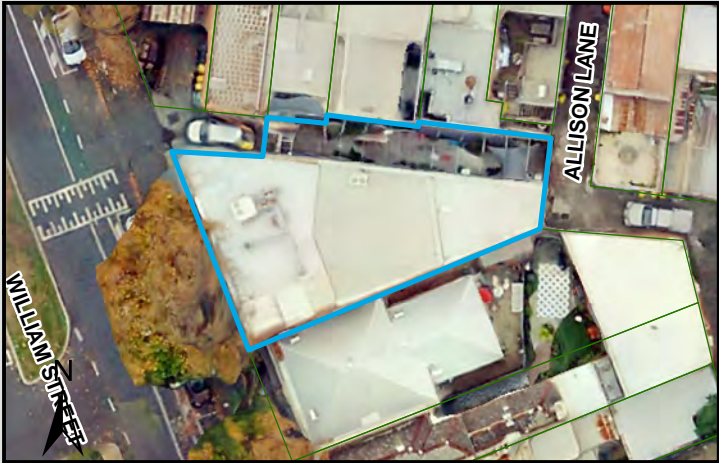
0 5 10 20 30 40 50 metres

**SCALE (at A4) (BUILDING MAP) 1:1,800**  
DATUM GDA 94, PROJECTION MGA Zone 55

**PROJECT: 18113718**  
**DATE: 27 FEB 2019**  
**DRAWN: TPC**  
**CHECKED: IMK**



Information contained on this drawing is the copyright of Golder Associates Pty. Ltd. Unauthorised use or reproduction of this plan either wholly or in part without written permission infringes copyright. © Golder Associates Pty. Ltd.



LEGEND

 Parcel Boundary



Action Plan

EAO Recommendation

Apply EAO

EAO Comment

Site has been identified as being potentially contaminated in accordance with the Potentially Contaminated Land General Practice Note (DSE, 2005)

Site Use Summary

Current Land Use  
Commercial

Historic Land Use  
Industrial

Key Information Supporting EAO Decision

Potentially contaminating land use/s identified on site as listed in the DSE General Practice Note (2005): Service station/fuel storage

Additional Considerations

Resources used to make decision



Resources used to make decision

Publicly available Melbourne Street Directories (Yellow Pages 1990, Urban Business Directory 1975/6 & 1984), Site inspection, Historical aerial photographs (1968/9 & 1987)

WEST MELBOURNE EAO - AMENDMENT C309 -  
WEST MELBOURNE STRUCTURE PLAN:  
PRELIMINARY LAND CONTAMINATION ASSESSMENT

CITY OF MELBOURNE

GIS ID: 7421

COPYRIGHT

Aerial Imagery copyright  
City of Melbourne

0 3 6 12 18 24 30 metres

SCALE (at A4) (BUILDING MAP) 1:600  
DATUM GDA 94, PROJECTION MGA Zone 55

PROJECT: 18113718  
DATE: 27 FEB 2019  
DRAWN: TPC  
CHECKED: IMK






Information contained on this drawing is the copyright of Golder Associates Pty. Ltd. Unauthorised use or reproduction of this plan either wholly or in part without written permission infringes copyright. © Golder Associates Pty. Ltd.



LEGEND

 Parcel Boundary

Action Plan

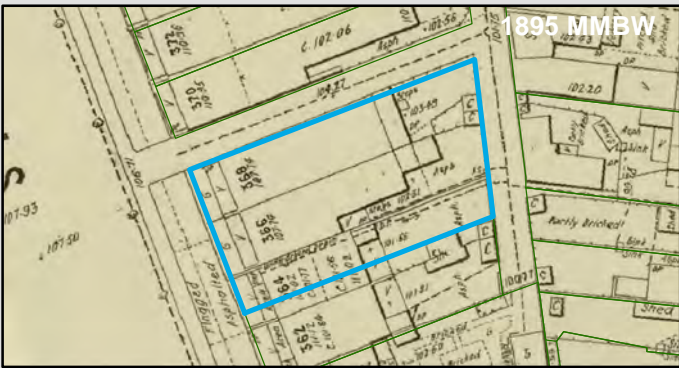
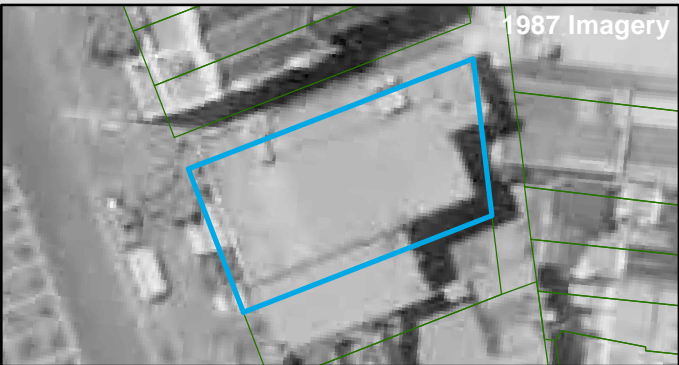
EAO Recommendation

Apply EAO

EAO Comment

Historical industrial/commercial building with documented or likely past industrial use with possible high potential for contamination.

Resources used to make decision



Site Use Summary

Current Land Use  
Commercial

Historic Land Use  
Other (unsure)

Key Information Supporting EAO Decision

Unknown current or past industrial use identified on site.

Additional Considerations

1895 plans show residential site use. 1969 aerals show warehouse type building onsite, use unknown.

Resources used to make decision

City of Melbourne interactive map (2019), Site inspection, Historical aerial photographs (1968/9 & 1987)

WEST MELBOURNE EAO - AMENDMENT C309 -  
WEST MELBOURNE STRUCTURE PLAN:  
PRELIMINARY LAND CONTAMINATION ASSESSMENT

CITY OF MELBOURNE

GIS ID: 7428

COPYRIGHT  
Aerial Imagery copyright  
City of Melbourne

0 3.5 7 14 21 28 35 metres  
SCALE (at A4) (BUILDING MAP) 1:700  
DATUM GDA 94, PROJECTION MGA Zone 55  
PROJECT: 18113718  
DATE: 27 FEB 2019  
DRAWN: TPC  
CHECKED: IMK



Information contained on this drawing is the copyright of Golder Associates Pty. Ltd. Unauthorised use or reproduction of this plan either wholly or in part without written permission infringes copyright. © Golder Associates Pty. Ltd.

CoM Property ID: 110851

53-57 Jones Place WEST MELBOURNE VIC 3003



LEGEND

 Parcel Boundary



Action Plan

EAO Recommendation

**Apply EAO**

EAO Comment

Historical industrial/commercial building with documented or likely past industrial use with possible high potential for contamination.

Site Use Summary

**Current Land Use**  
Residential

**Historic Land Use**  
Industrial

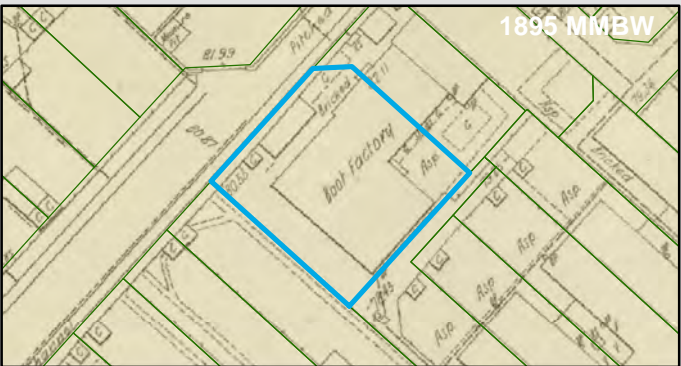
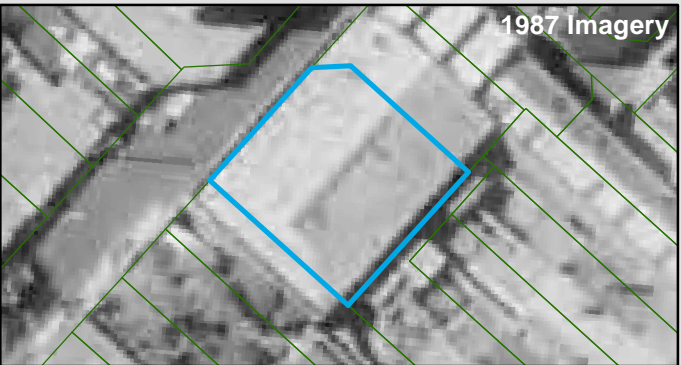
Key Information Supporting EAO Decision

Unknown current or past industrial use identified on site.

Additional Considerations

Conversion of industrial site to apartments.

Resources used to make decision



Resources used to make decision

West Melbourne Heritage Review Appendix 2 (May 2016), Site inspection, Historical aerial photographs (1968/9 & 1987)

WEST MELBOURNE EAO - AMENDMENT C309 -  
WEST MELBOURNE STRUCTURE PLAN:  
PRELIMINARY LAND CONTAMINATION ASSESSMENT

CITY OF MELBOURNE

**GIS ID: 5209**

COPYRIGHT

Aerial Imagery copyright  
City of Melbourne

0 3 6 12 18 24 30 metres

**SCALE (at A4) (BUILDING MAP) 1:600**  
DATUM GDA 94, PROJECTION MGA Zone 55

**PROJECT: 18113718**  
**DATE: 27 FEB 2019**  
**DRAWN: TPC**  
**CHECKED: IMK**





CoM Property ID: 110852

59 Jones Place WEST MELBOURNE VIC 3003



#### LEGEND

 Parcel Boundary

#### Action Plan

##### EAO Recommendation

**Apply EAO**

##### EAO Comment

Historical industrial/commercial building with documented or likely past industrial use with possible high potential for contamination.

#### Site Use Summary

**Current Land Use**  
Residential

**Historic Land Use**  
Industrial

##### Key Information Supporting EAO Decision

Unknown current or past industrial use identified on site.

##### Additional Considerations

Conversion of industrial site to apartments.

#### Resources used to make decision



##### Resources used to make decision

West Melbourne Heritage Review Appendix 2 (May 2016), Site inspection, Historical aerial photographs (1968/9 & 1987)

WEST MELBOURNE EAO - AMENDMENT C309 -  
WEST MELBOURNE STRUCTURE PLAN:  
PRELIMINARY LAND CONTAMINATION ASSESSMENT

CITY OF MELBOURNE

**GIS ID: 5210**

##### COPYRIGHT

Aerial Imagery copyright  
City of Melbourne

0 2.5 5 10 15 20 25 metres

**SCALE (at A4) (BUILDING MAP) 1:500**  
DATUM GDA 94, PROJECTION MGA Zone 55

**PROJECT: 18113718**  
**DATE: 27 FEB 2019**  
**DRAWN: TPC**  
**CHECKED: IMK**



CoM Property ID: 110917

61 Jones Place WEST MELBOURNE VIC 3003



#### LEGEND

 Parcel Boundary

#### Action Plan

##### EAO Recommendation

**Apply EAO**

##### EAO Comment

Historical industrial/commercial building with documented or likely past industrial use with possible high potential for contamination.

#### Site Use Summary

**Current Land Use**  
Residential

**Historic Land Use**  
Industrial

##### Key Information Supporting EAO Decision

Unknown current or past industrial use identified on site.

##### Additional Considerations

Aerials show a saw tooth roof on site, which indicates likely past industrial use

#### Resources used to make decision



##### Resources used to make decision

West Melbourne Heritage Review Appendix 2 (May 2016), Site inspection, Historical aerial photographs (1968/9 & 1987)

WEST MELBOURNE EAO - AMENDMENT C309 -  
WEST MELBOURNE STRUCTURE PLAN:  
PRELIMINARY LAND CONTAMINATION ASSESSMENT

CITY OF MELBOURNE

**GIS ID: 6494**

##### COPYRIGHT

Aerial Imagery copyright  
City of Melbourne

0 3 6 12 18 24 30 metres

**SCALE (at A4) (BUILDING MAP) 1:600**  
DATUM GDA 94, PROJECTION MGA Zone 55

**PROJECT: 18113718**  
**DATE: 27 FEB 2019**  
**DRAWN: TPC**  
**CHECKED: IMK**






Information contained on this drawing is the copyright of Golder Associates Pty. Ltd. Unauthorised use or reproduction of this plan either wholly or in part without written permission infringes copyright. © Golder Associates Pty. Ltd.



LEGEND

 Parcel Boundary

Action Plan

EAO Recommendation

Apply EAO

EAO Comment

Historical industrial/commercial building with documented or likely past industrial use with possible high potential for contamination.

Site Use Summary

Current Land Use  
Commercial

Historic Land Use  
Commercial

Key Information Supporting EAO Decision

Unknown current or past industrial use identified on site.

Additional Considerations

Resources used to make decision



Resources used to make decision

City of Melbourne interactive map (2019), West Melbourne Heritage Review Appendix 2 (May 2016), Site inspection, Historical aerial photographs (1968/9 & 1987)

WEST MELBOURNE EAO - AMENDMENT C309 -  
WEST MELBOURNE STRUCTURE PLAN:  
PRELIMINARY LAND CONTAMINATION ASSESSMENT

CITY OF MELBOURNE

GIS ID: 14658

COPYRIGHT  
Aerial Imagery copyright  
City of Melbourne

0 2.5 5 10 15 20 25 metres  
SCALE (at A4) (BUILDING MAP) 1:500  
DATUM GDA 94, PROJECTION MGA Zone 55  
PROJECT: 18113718  
DATE: 27 FEB 2019  
DRAWN: TPC  
CHECKED: IMK



Information contained on this drawing is the copyright of Golder Associates Pty. Ltd. Unauthorised use or reproduction of this plan either wholly or in part without written permission infringes copyright. © Golder Associates Pty. Ltd.

CoM Property ID: 111367

241-249 Adderley Street WEST MELBOURNE VIC 3003



#### LEGEND

 Parcel Boundary



#### Action Plan

##### EAO Recommendation

**Apply EAO**

##### EAO Comment

Site has been issued with a Statement of Environmental Audit with Conditions that require ongoing management for sensitive uses. (Carms No. 32617-1)

#### Site Use Summary

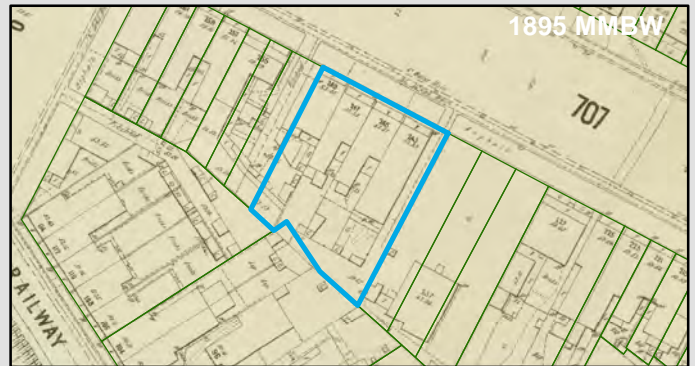
**Current Land Use**  
Residential

**Historic Land Use**  
Industrial

#### Key Information Supporting EAO Decision

#### Additional Considerations

#### Resources used to make decision



#### Resources used to make decision

West Melbourne Heritage Review Appendix 2 (May 2016), Site inspection, Historical aerial photographs (1968/9 & 1987)

WEST MELBOURNE EAO - AMENDMENT C309 -  
WEST MELBOURNE STRUCTURE PLAN:  
PRELIMINARY LAND CONTAMINATION ASSESSMENT

CITY OF MELBOURNE

**GIS ID: 8280**

#### COPYRIGHT

Aerial Imagery copyright  
City of Melbourne

0 5 10 20 30 40 50 metres

**SCALE (at A4) (BUILDING MAP) 1:1,400**  
DATUM GDA 94, PROJECTION MGA Zone 55

**PROJECT: 18113718**  
**DATE: 27 FEB 2019**  
**DRAWN: TPC**  
**CHECKED: IMK**






Information contained on this drawing is the copyright of Golder Associates Pty. Ltd. Unauthorised use or reproduction of this plan either wholly or in part without written permission infringes copyright. © Golder Associates Pty. Ltd.



LEGEND

 Parcel Boundary



Action Plan

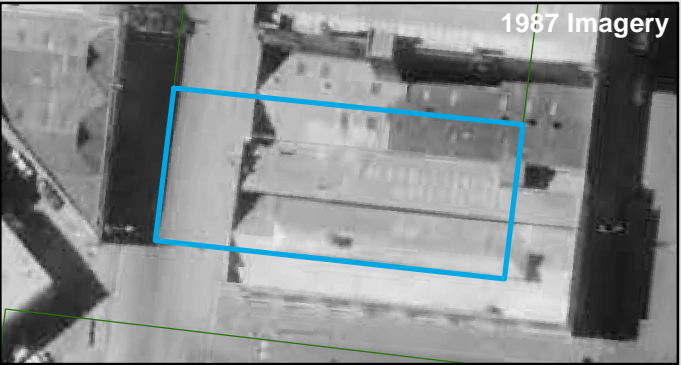
EAO Recommendation

Apply EAO

EAO Comment

Site has been issued with a Statement of Environmental Audit with Conditions that require ongoing management for sensitive uses. (Carns No. 46312-1)

Resources used to make decision



1987 Imagery

Site Use Summary

**Current Land Use**  
Residential

**Historic Land Use**  
Industrial



1895 MMBW

Key Information Supporting EAO Decision

Potentially contaminating land use/s identified on site as listed in the DSE General Practice Note (2005): Other industrial activities (Medium Potential)

Additional Considerations

Resources used to make decision

Site inspection, Historical aerial photographs (1968/9 & 1987), EPA Audits (53X and 53V)

WEST MELBOURNE EAO - AMENDMENT C309 -  
WEST MELBOURNE STRUCTURE PLAN:  
PRELIMINARY LAND CONTAMINATION ASSESSMENT

CITY OF MELBOURNE

**GIS ID: 9176**

**COPYRIGHT**  
Aerial Imagery copyright  
City of Melbourne

0 5 10 20 30 40 50 metres  
**SCALE (at A4) (BUILDING MAP) 1:1,100**  
DATUM GDA 94, PROJECTION MGA Zone 55  
**PROJECT: 18113718**  
**DATE: 27 FEB 2019**  
**DRAWN: TPC**  
**CHECKED: IMK**



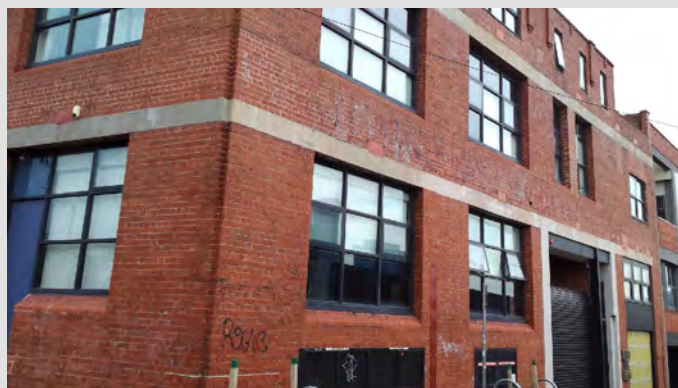
CoM Property ID: 516626

199-213 Hawke Street WEST MELBOURNE VIC 3003



#### LEGEND

 Parcel Boundary



#### Action Plan

##### EAO Recommendation

**Apply EAO**

##### EAO Comment

Site has been identified as being potentially contaminated in accordance with the Potentially Contaminated Land General Practice Note (DSE, 2005)

#### Site Use Summary

**Current Land Use**  
Residential

**Historic Land Use**  
Industrial

#### Key Information Supporting EAO Decision

Potentially contaminating land use/s identified on site as listed in the DSE General Practice Note (2005): Wool scouring

#### Additional Considerations

Formerly 'Moorside Wool Company'.

#### Resources used to make decision



#### Resources used to make decision

West Melbourne Heritage Review Appendix 2 (May 2016), Site inspection, Historical aerial photographs (1968/9 & 1987)

WEST MELBOURNE EAO - AMENDMENT C309 -  
WEST MELBOURNE STRUCTURE PLAN:  
PRELIMINARY LAND CONTAMINATION ASSESSMENT

CITY OF MELBOURNE

**GIS ID: 13442**

#### COPYRIGHT

Aerial Imagery copyright  
City of Melbourne

0 5 10 20 30 40 50 metres

**SCALE (at A4) (BUILDING MAP) 1:1,500**  
DATUM GDA 94, PROJECTION MGA Zone 55

**PROJECT: 18113718**  
**DATE: 27 FEB 2019**  
**DRAWN: TPC**  
**CHECKED: IMK**





CoM Property ID: 517179

57-63 Ireland Street WEST MELBOURNE VIC 3003



#### LEGEND

 Parcel Boundary

#### Action Plan

##### EAO Recommendation

**Apply EAO**

##### EAO Comment

Historical industrial/commercial building with documented or likely past industrial use with possible high potential for contamination.

#### Site Use Summary

**Current Land Use**  
Residential

**Historic Land Use**  
Industrial

##### Key Information Supporting EAO Decision

Unknown current or past industrial use identified on site.

##### Additional Considerations

1969 Aerial shows a saw tooth roof on site, which indicates likely past industrial use.

#### Resources used to make decision



##### Resources used to make decision

Site inspection, Historical aerial photographs (1968/9 & 1987)

WEST MELBOURNE EAO - AMENDMENT C309 -  
WEST MELBOURNE STRUCTURE PLAN:  
PRELIMINARY LAND CONTAMINATION ASSESSMENT

CITY OF MELBOURNE

**GIS ID: 1628**

##### COPYRIGHT

Aerial Imagery copyright  
City of Melbourne

0 5 10 20 30 40 50 metres

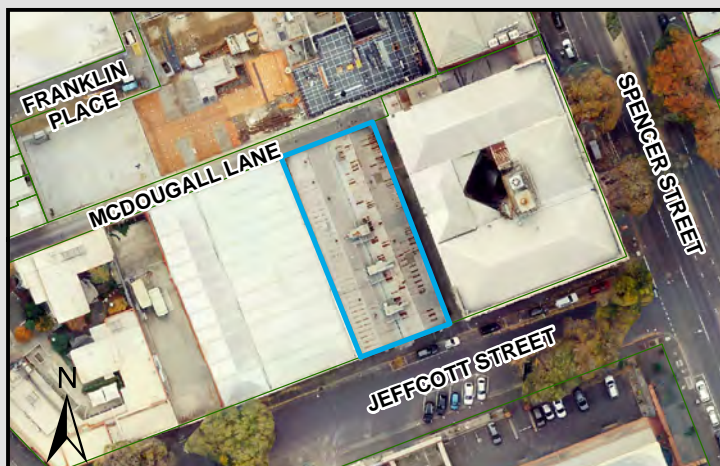
**SCALE (at A4) (BUILDING MAP) 1:1,200**  
DATUM GDA 94, PROJECTION MGA Zone 55

**PROJECT: 18113718**  
**DATE: 27 FEB 2019**  
**DRAWN: TPC**  
**CHECKED: IMK**



CoM Property ID: 517248

102-108 Jeffcott Street WEST MELBOURNE VIC 3003



#### LEGEND

 Parcel Boundary



#### Action Plan

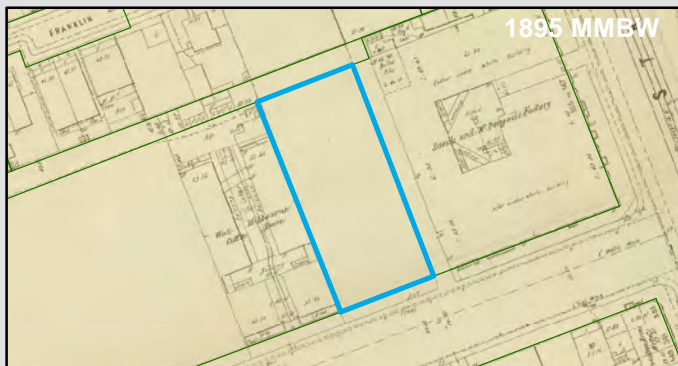
##### EAO Recommendation

**Apply EAO**

##### EAO Comment

Historical industrial/commercial building with documented or likely past industrial use with possible high potential for contamination.

#### Resources used to make decision



#### Site Use Summary

##### Current Land Use

Public land (schools, hospitals, parks)

##### Historic Land Use

Commercial

#### Key Information Supporting EAO Decision

Unknown current or past industrial use identified on site.

#### Additional Considerations

Fire Insurance maps indicate building part of Sands & McDougall

#### Resources used to make decision

Mahlstedt fire insurance maps (CBD 1923-25),  
Historical aerial photographs, Site inspection

WEST MELBOURNE EAO - AMENDMENT C309 -  
WEST MELBOURNE STRUCTURE PLAN:  
PRELIMINARY LAND CONTAMINATION ASSESSMENT

CITY OF MELBOURNE

**GIS ID: 14184**

#### COPYRIGHT

Aerial Imagery copyright  
City of Melbourne

0 5 10 20 30 40 50 metres

**SCALE (at A4) (BUILDING MAP) 1:1,600**  
DATUM GDA 94, PROJECTION MGA Zone 55

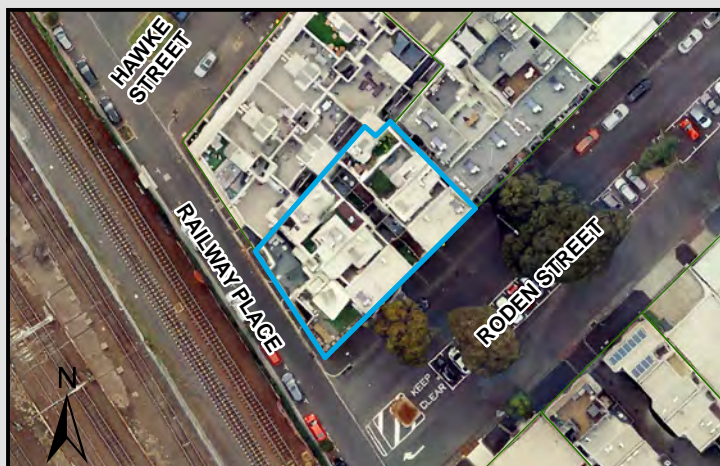
**PROJECT: 18113718**  
**DATE: 27 FEB 2019**  
**DRAWN: TPC**  
**CHECKED: IMK**





CoM Property ID: 528836

230-238 Roden Street WEST MELBOURNE VIC 3003



#### LEGEND

 Parcel Boundary



#### Action Plan

##### EAO Recommendation

**Apply EAO**

##### EAO Comment

Site has been identified as being potentially contaminated in accordance with the Potentially Contaminated Land General Practice Note (DSE, 2005)

#### Resources used to make decision



#### Site Use Summary

**Current Land Use**  
Residential

**Historic Land Use**  
Industrial



#### Key Information Supporting EAO Decision

Potentially contaminating land use/s identified on site as listed in the DSE General Practice Note (2005): Wool scouring

#### Additional Considerations

#### Resources used to make decision

Site inspection, Historical aerial photographs (1968/9 & 1987), MMBW Maps (1895)

WEST MELBOURNE EAO - AMENDMENT C309 -  
WEST MELBOURNE STRUCTURE PLAN:  
PRELIMINARY LAND CONTAMINATION ASSESSMENT

CITY OF MELBOURNE

**GIS ID: 13443**

#### COPYRIGHT

Aerial Imagery copyright  
City of Melbourne

0 5 10 20 30 40 50 metres

**SCALE (at A4) (BUILDING MAP) 1:1,200**  
DATUM GDA 94, PROJECTION MGA Zone 55

**PROJECT: 18113718**  
**DATE: 27 FEB 2019**  
**DRAWN: TPC**  
**CHECKED: IMK**



CoM Property ID: 528903

272-274 Rosslyn Street WEST MELBOURNE VIC 3003



#### LEGEND

 Parcel Boundary

#### Action Plan

##### EAO Recommendation

**Apply EAO**

##### EAO Comment

Historical industrial/commercial building with documented or likely past industrial use with possible high potential for contamination.

#### Site Use Summary

**Current Land Use**  
Commercial

**Historic Land Use**  
Residential

#### Key Information Supporting EAO Decision

Unknown current or past industrial use identified on site.

#### Additional Considerations

1859 indicates residential, 1987 indicates current building onsite.

#### Resources used to make decision



#### Resources used to make decision

Site Inspection,  
MMBW Maps (1895),  
Historical aerial photographs,  
Current aerial photographs (May 2018)

WEST MELBOURNE EAO - AMENDMENT C309 -  
WEST MELBOURNE STRUCTURE PLAN:  
PRELIMINARY LAND CONTAMINATION ASSESSMENT

CITY OF MELBOURNE

**GIS ID: 6651**

#### COPYRIGHT

Aerial Imagery copyright  
City of Melbourne

0 4 8 16 24 32 40 metres

**SCALE (at A4) (BUILDING MAP) 1:800**  
DATUM GDA 94, PROJECTION MGA Zone 55

**PROJECT: 18113718**  
**DATE: 27 FEB 2019**  
**DRAWN: TPC**  
**CHECKED: IMK**





Information contained on this drawing is the copyright of Golder Associates Pty. Ltd. Unauthorised use or reproduction of this plan either wholly or in part without written permission infringes copyright. © Golder Associates Pty. Ltd.

CoM Property ID: 528904

268-270 Rosslyn Street WEST MELBOURNE VIC 3003



#### LEGEND

 Parcel Boundary

#### Action Plan

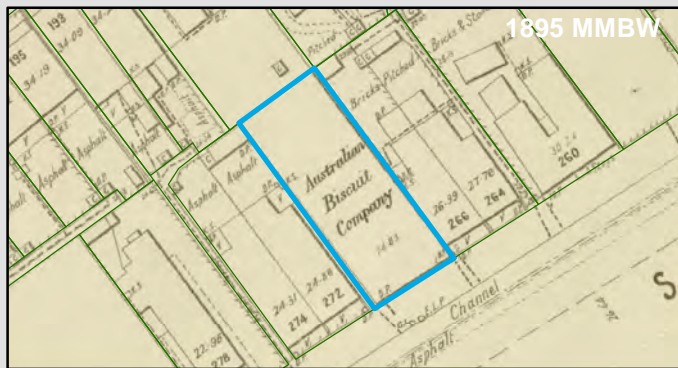
##### EAO Recommendation

**Apply EAO**

##### EAO Comment

Historical industrial/commercial building with documented or likely past industrial use with possible high potential for contamination.

#### Resources used to make decision



#### Site Use Summary

**Current Land Use**  
Commercial

**Historic Land Use**  
Industrial

##### Key Information Supporting EAO Decision

Unknown current or past industrial use identified on site.

##### Additional Considerations

Australian Biscuit Company. 1895 aerial indicates industrial type building onsite. 1987 shows current building onsite.

##### Resources used to make decision

Site Inspection,  
MMBW Maps (1895),  
Historical aerial photographs,  
Current aerial photographs (May 2018)

WEST MELBOURNE EAO - AMENDMENT C309 -  
WEST MELBOURNE STRUCTURE PLAN:  
PRELIMINARY LAND CONTAMINATION ASSESSMENT

CITY OF MELBOURNE

**GIS ID: 6698**

##### COPYRIGHT

Aerial Imagery copyright  
City of Melbourne

0 4 8 16 24 32 40 metres

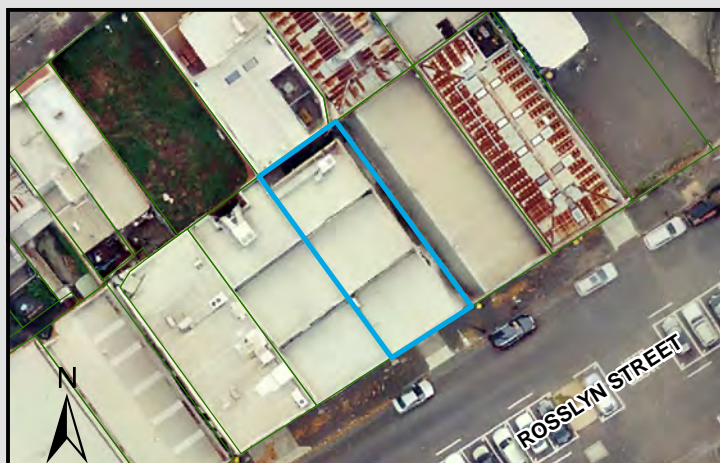
**SCALE (at A4) (BUILDING MAP) 1:800**  
DATUM GDA 94, PROJECTION MGA Zone 55

**PROJECT: 18113718**  
**DATE: 27 FEB 2019**  
**DRAWN: TPC**  
**CHECKED: IMK**



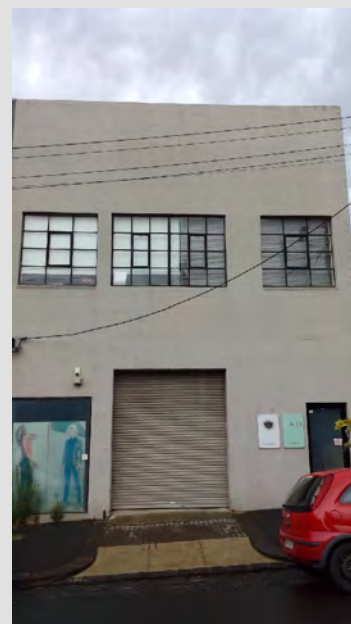
CoM Property ID: 528905

264-266 Rosslyn Street WEST MELBOURNE VIC 3003



#### LEGEND

 Parcel Boundary



#### Action Plan

##### EAO Recommendation

**Apply EAO**

##### EAO Comment

Historical industrial/commercial building with documented or likely past industrial use with possible high potential for contamination.

#### Resources used to make decision



#### Site Use Summary

**Current Land Use**  
Commercial

**Historic Land Use**  
Residential

#### Key Information Supporting EAO Decision

Unknown current or past industrial use identified on site.

#### Additional Considerations

1859 indicates residential. 1987 indicates current building onsite.

#### Resources used to make decision

Site Inspection,  
MMBW Maps (1895),  
Historical aerial photographs,  
Current aerial photographs (May 2018)

WEST MELBOURNE EAO - AMENDMENT C309 -  
WEST MELBOURNE STRUCTURE PLAN:  
PRELIMINARY LAND CONTAMINATION ASSESSMENT

CITY OF MELBOURNE

**GIS ID: 6692**

#### COPYRIGHT

Aerial Imagery copyright  
City of Melbourne

0 4 8 16 24 32 40 metres

**SCALE (at A4) (BUILDING MAP) 1:800**  
DATUM GDA 94, PROJECTION MGA Zone 55

**PROJECT: 18113718**  
**DATE: 27 FEB 2019**  
**DRAWN: TPC**  
**CHECKED: IMK**





Information contained on this drawing is the copyright of Golder Associates Pty. Ltd. Unauthorised use or reproduction of this plan either wholly or in part without written permission infringes copyright. © Golder Associates Pty. Ltd.

CoM Property ID: 533748

12 Prout Lane WEST MELBOURNE VIC 3003



LEGEND

 Parcel Boundary



Action Plan

EAO Recommendation

**Apply EAO**

EAO Comment

Historical industrial/commercial building with documented or likely past industrial use with possible high potential for contamination.

Resources used to make decision



Site Use Summary

**Current Land Use**  
Residential

**Historic Land Use**  
Commercial



Key Information Supporting EAO Decision

Unknown current or past industrial use identified on site.

Additional Considerations

Resources used to make decision

West Melbourne Heritage Review Appendix 2 (May 2016), Site inspection, Historical aerial photographs (1968/9 & 1987)

WEST MELBOURNE EAO - AMENDMENT C309 -  
WEST MELBOURNE STRUCTURE PLAN:  
PRELIMINARY LAND CONTAMINATION ASSESSMENT

CITY OF MELBOURNE

**GIS ID: 7056**

COPYRIGHT

Aerial Imagery copyright  
City of Melbourne

0 3 6 12 18 24 30 metres

**SCALE (at A4) (BUILDING MAP) 1:600**  
DATUM GDA 94, PROJECTION MGA Zone 55

**PROJECT: 18113718**  
**DATE: 27 FEB 2019**  
**DRAWN: TPC**  
**CHECKED: IMK**



**GOLDER**

Information contained on this drawing is the copyright of Golder Associates Pty. Ltd. Unauthorised use or reproduction of this plan either wholly or in part without written permission infringes copyright. © Golder Associates Pty. Ltd.

CoM Property ID: 535384

19 Walsh Street WEST MELBOURNE VIC 3003



#### LEGEND

 Parcel Boundary



### Action Plan

#### EAO Recommendation

**Apply EAO**

#### EAO Comment

Historical industrial/commercial building with documented or likely past industrial use with possible high potential for contamination.

### Site Use Summary

**Current Land Use**  
Residential

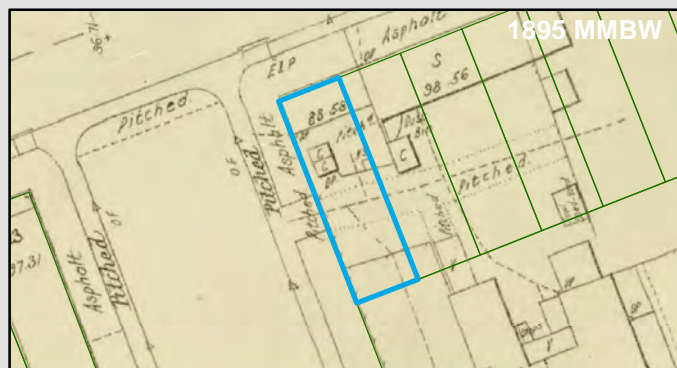
**Historic Land Use**  
Commercial

#### Key Information Supporting EAO Decision

Unknown current or past industrial use identified on site.

#### Additional Considerations

### Resources used to make decision



#### Resources used to make decision

Site inspection, Historical aerial photographs (1968/9 & 1987)

WEST MELBOURNE EAO - AMENDMENT C309 -  
WEST MELBOURNE STRUCTURE PLAN:  
PRELIMINARY LAND CONTAMINATION ASSESSMENT

CITY OF MELBOURNE

**GIS ID: 5221**

#### COPYRIGHT

Aerial Imagery copyright  
City of Melbourne

0 3 6 12 18 24 30 metres

**SCALE (at A4) (BUILDING MAP) 1:600**  
DATUM GDA 94, PROJECTION MGA Zone 55

**PROJECT: 18113718**  
**DATE: 27 FEB 2019**  
**DRAWN: TPC**  
**CHECKED: IMK**






Information contained on this drawing is the copyright of Golder Associates Pty. Ltd. Unauthorised use or reproduction of this plan either wholly or in part without written permission infringes copyright. © Golder Associates Pty. Ltd.



LEGEND

 Parcel Boundary

Action Plan

EAO Recommendation

Apply EAO

EAO Comment

Historical industrial/commercial building with documented or likely past industrial use with possible high potential for contamination.

Site Use Summary

Current Land Use  
Residential

Historic Land Use  
Commercial

Key Information Supporting EAO Decision

Unknown current or past industrial use identified on site.

Additional Considerations

Resources used to make decision



Resources used to make decision

Site inspection, Historical aerial photographs (1968/9 & 1987)

WEST MELBOURNE EAO - AMENDMENT C309 -  
WEST MELBOURNE STRUCTURE PLAN:  
PRELIMINARY LAND CONTAMINATION ASSESSMENT

CITY OF MELBOURNE

GIS ID: 5220

COPYRIGHT  
Aerial Imagery copyright  
City of Melbourne

0 3 6 12 18 24 30 metres  
SCALE (at A4) (BUILDING MAP) 1:600  
DATUM GDA 94, PROJECTION MGA Zone 55  
PROJECT: 18113718  
DATE: 27 FEB 2019  
DRAWN: TPC  
CHECKED: IMK



Information contained on this drawing is the copyright of Golder Associates Pty. Ltd. Unauthorised use or reproduction of this plan either wholly or in part without written permission infringes copyright. © Golder Associates Pty. Ltd.



LEGEND

 Parcel Boundary

Action Plan

EAO Recommendation

Apply EAO

EAO Comment

Historical industrial/commercial building with documented or likely past industrial use with possible high potential for contamination.

Site Use Summary

Current Land Use  
Residential

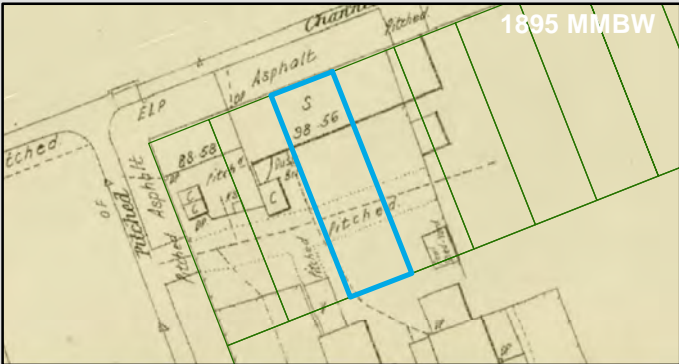
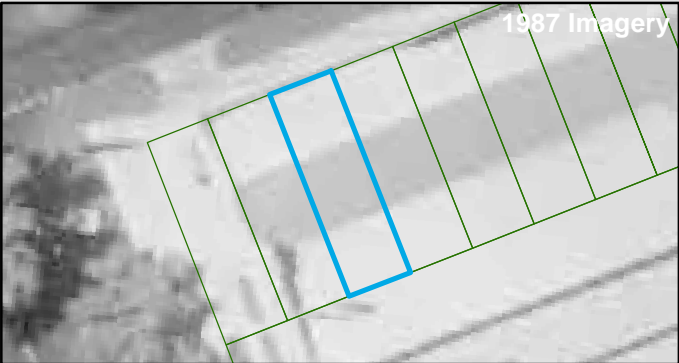
Historic Land Use  
Commercial

Key Information Supporting EAO Decision

Unknown current or past industrial use identified on site.

Additional Considerations

Resources used to make decision



Resources used to make decision

Site inspection, Historical aerial photographs (1968/9 & 1987)

WEST MELBOURNE EAO - AMENDMENT C309 -  
WEST MELBOURNE STRUCTURE PLAN:  
PRELIMINARY LAND CONTAMINATION ASSESSMENT

CITY OF MELBOURNE

GIS ID: 5219

COPYRIGHT  
Aerial Imagery copyright  
City of Melbourne

0 3 6 12 18 24 30 metres  
SCALE (at A4) (BUILDING MAP) 1:600  
DATUM GDA 94, PROJECTION MGA Zone 55  
PROJECT: 18113718  
DATE: 27 FEB 2019  
DRAWN: TPC  
CHECKED: IMK





Information contained on this drawing is the copyright of Golder Associates Pty. Ltd. Unauthorised use or reproduction of this plan either wholly or in part without written permission infringes copyright. © Golder Associates Pty. Ltd.

CoM Property ID: 535387

13 Walsh Street WEST MELBOURNE VIC 3003



#### LEGEND

 Parcel Boundary



#### Action Plan

##### EAO Recommendation

**Apply EAO**

##### EAO Comment

Historical industrial/commercial building with documented or likely past industrial use with possible high potential for contamination.

#### Resources used to make decision



#### Site Use Summary

**Current Land Use**  
Residential

**Historic Land Use**  
Commercial



##### Key Information Supporting EAO Decision

Unknown current or past industrial use identified on site.

##### Additional Considerations

##### Resources used to make decision

Site inspection, Historical aerial photographs (1968/9 & 1987)

WEST MELBOURNE EAO - AMENDMENT C309 -  
WEST MELBOURNE STRUCTURE PLAN:  
PRELIMINARY LAND CONTAMINATION ASSESSMENT

CITY OF MELBOURNE

**GIS ID: 5218**

##### COPYRIGHT

Aerial Imagery copyright  
City of Melbourne

0 3 6 12 18 24 30 metres

**SCALE (at A4) (BUILDING MAP) 1:600**  
DATUM GDA 94, PROJECTION MGA Zone 55

**PROJECT: 18113718**  
**DATE: 27 FEB 2019**  
**DRAWN: TPC**  
**CHECKED: IMK**



Information contained on this drawing is the copyright of Golder Associates Pty. Ltd. Unauthorised use or reproduction of this plan either wholly or in part without written permission infringes copyright. © Golder Associates Pty. Ltd.

CoM Property ID: 535388

11 Walsh Street WEST MELBOURNE VIC 3003



#### LEGEND

 Parcel Boundary

#### Action Plan

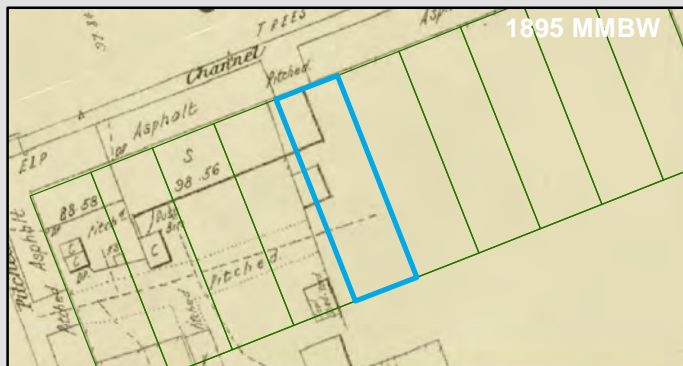
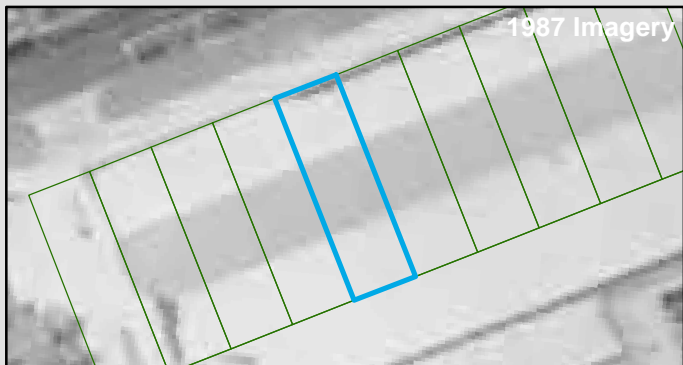
##### EAO Recommendation

**Apply EAO**

##### EAO Comment

Historical industrial/commercial building with documented or likely past industrial use with possible high potential for contamination.

#### Resources used to make decision



#### Site Use Summary

**Current Land Use**  
Residential

**Historic Land Use**  
Commercial

#### Key Information Supporting EAO Decision

Unknown current or past industrial use identified on site.

#### Additional Considerations

#### Resources used to make decision

Site inspection, Historical aerial photographs (1968/9 & 1987)

WEST MELBOURNE EAO - AMENDMENT C309 -  
WEST MELBOURNE STRUCTURE PLAN:  
PRELIMINARY LAND CONTAMINATION ASSESSMENT

CITY OF MELBOURNE

**GIS ID: 5217**

#### COPYRIGHT

Aerial Imagery copyright  
City of Melbourne

0 3 6 12 18 24 30 metres

**SCALE (at A4) (BUILDING MAP) 1:600**  
DATUM GDA 94, PROJECTION MGA Zone 55

**PROJECT: 18113718**  
**DATE: 27 FEB 2019**  
**DRAWN: TPC**  
**CHECKED: IMK**






Information contained on this drawing is the copyright of Golder Associates Pty. Ltd. Unauthorised use or reproduction of this plan either wholly or in part without written permission infringes copyright. © Golder Associates Pty. Ltd.



LEGEND

 Parcel Boundary

Action Plan

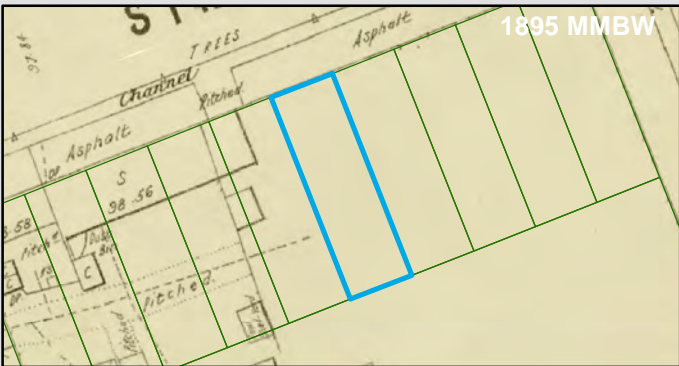
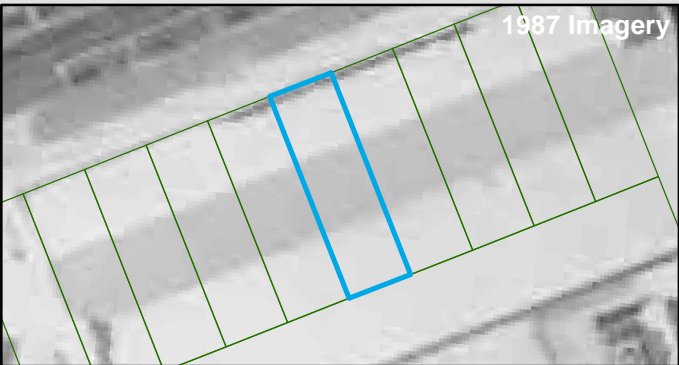
EAO Recommendation

Apply EAO

EAO Comment

Historical industrial/commercial building with documented or likely past industrial use with possible high potential for contamination.

Resources used to make decision



Site Use Summary

Current Land Use  
Residential

Historic Land Use  
Commercial

Key Information Supporting EAO Decision

Unknown current or past industrial use identified on site.

Additional Considerations

Resources used to make decision

Site inspection, Historical aerial photographs (1968/9 & 1987)

WEST MELBOURNE EAO - AMENDMENT C309 -  
WEST MELBOURNE STRUCTURE PLAN:  
PRELIMINARY LAND CONTAMINATION ASSESSMENT

CITY OF MELBOURNE

GIS ID: 5216

COPYRIGHT

Aerial Imagery copyright  
City of Melbourne

0 3 6 12 18 24 30 metres

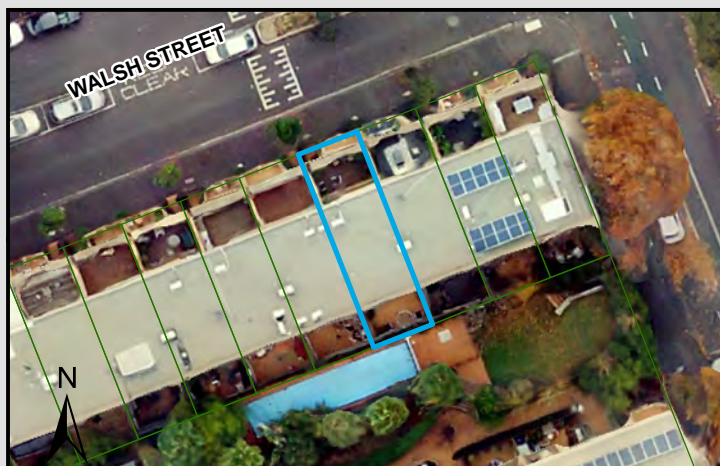
SCALE (at A4) (BUILDING MAP) 1:600  
DATUM GDA 94, PROJECTION MGA Zone 55

PROJECT: 18113718  
DATE: 27 FEB 2019  
DRAWN: TPC  
CHECKED: IMK



CoM Property ID: 535390

7 Walsh Street WEST MELBOURNE VIC 3003



#### LEGEND

 Parcel Boundary

#### Action Plan

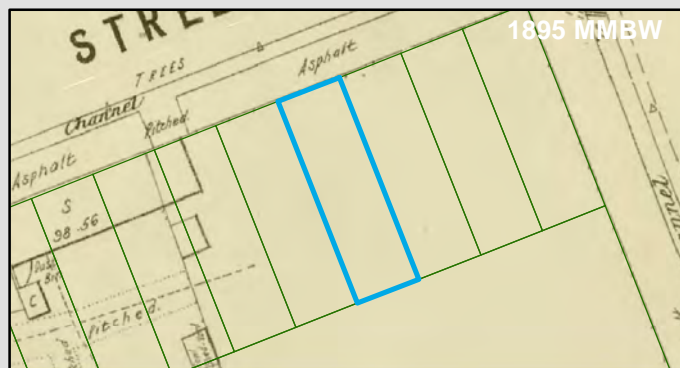
##### EAO Recommendation

**Apply EAO**

##### EAO Comment

Historical industrial/commercial building with documented or likely past industrial use with possible high potential for contamination.

#### Resources used to make decision



#### Site Use Summary

**Current Land Use**  
Residential

**Historic Land Use**  
Commercial

#### Key Information Supporting EAO Decision

Unknown current or past industrial use identified on site.

#### Additional Considerations

#### Resources used to make decision

Site inspection, Historical aerial photographs (1968/9 & 1987)

WEST MELBOURNE EAO - AMENDMENT C309 -  
WEST MELBOURNE STRUCTURE PLAN:  
PRELIMINARY LAND CONTAMINATION ASSESSMENT

CITY OF MELBOURNE

**GIS ID: 5215**

#### COPYRIGHT

Aerial Imagery copyright  
City of Melbourne

0 3 6 12 18 24 30 metres

**SCALE (at A4) (BUILDING MAP) 1:600**  
DATUM GDA 94, PROJECTION MGA Zone 55

**PROJECT: 18113718**  
**DATE: 27 FEB 2019**  
**DRAWN: TPC**  
**CHECKED: IMK**





Information contained on this drawing is the copyright of Golder Associates Pty. Ltd. Unauthorised use or reproduction of this plan either wholly or in part without written permission infringes copyright. © Golder Associates Pty. Ltd.

CoM Property ID: 535391

5 Walsh Street WEST MELBOURNE VIC 3003



#### LEGEND

 Parcel Boundary



#### Action Plan

##### EAO Recommendation

**Apply EAO**

##### EAO Comment

Historical industrial/commercial building with documented or likely past industrial use with possible high potential for contamination.

#### Resources used to make decision



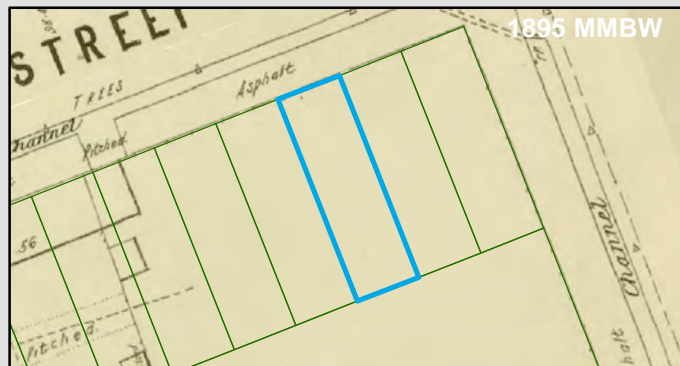
#### Site Use Summary

**Current Land Use**  
Residential

**Historic Land Use**  
Commercial

#### Key Information Supporting EAO Decision

Unknown current or past industrial use identified on site.



#### Additional Considerations

#### Resources used to make decision

Site inspection, Historical aerial photographs (1968/9 & 1987)

WEST MELBOURNE EAO - AMENDMENT C309 -  
WEST MELBOURNE STRUCTURE PLAN:  
PRELIMINARY LAND CONTAMINATION ASSESSMENT

CITY OF MELBOURNE

**GIS ID: 5214**

#### COPYRIGHT

Aerial Imagery copyright  
City of Melbourne

0 3 6 12 18 24 30 metres

**SCALE (at A4) (BUILDING MAP) 1:600**  
DATUM GDA 94, PROJECTION MGA Zone 55

**PROJECT: 18113718**  
**DATE: 27 FEB 2019**  
**DRAWN: TPC**  
**CHECKED: IMK**



Information contained on this drawing is the copyright of Golder Associates Pty. Ltd. Unauthorised use or reproduction of this plan either wholly or in part without written permission infringes copyright. © Golder Associates Pty. Ltd.

CoM Property ID: 535392

3 Walsh Street WEST MELBOURNE VIC 3003



#### LEGEND

 Parcel Boundary

#### Action Plan

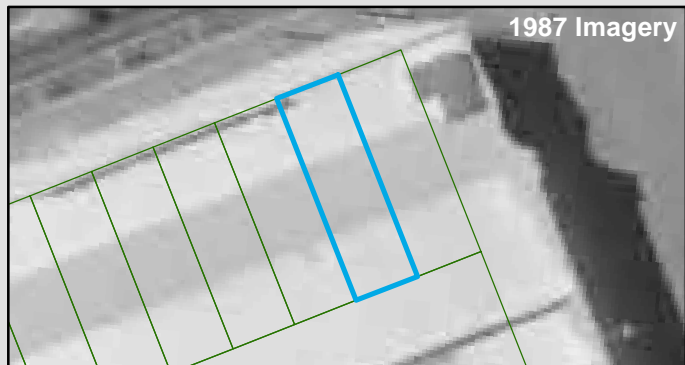
##### EAO Recommendation

**Apply EAO**

##### EAO Comment

Historical industrial/commercial building with documented or likely past industrial use with possible high potential for contamination.

#### Resources used to make decision



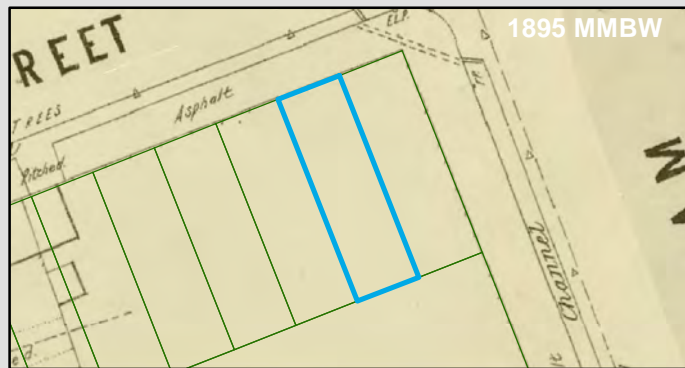
#### Site Use Summary

**Current Land Use**  
Residential

**Historic Land Use**  
Commercial

#### Key Information Supporting EAO Decision

Unknown current or past industrial use identified on site.



#### Additional Considerations

#### Resources used to make decision

Site inspection, Historical aerial photographs (1968/9 & 1987)

WEST MELBOURNE EAO - AMENDMENT C309 -  
WEST MELBOURNE STRUCTURE PLAN:  
PRELIMINARY LAND CONTAMINATION ASSESSMENT

CITY OF MELBOURNE

**GIS ID: 5213**

#### COPYRIGHT

Aerial Imagery copyright  
City of Melbourne

0 3 6 12 18 24 30 metres

**SCALE (at A4) (BUILDING MAP) 1:600**  
DATUM GDA 94, PROJECTION MGA Zone 55

**PROJECT: 18113718**  
**DATE: 27 FEB 2019**  
**DRAWN: TPC**  
**CHECKED: IMK**





CoM Property ID: 535393

1 Walsh Street WEST MELBOURNE VIC 3003



#### LEGEND

 Parcel Boundary

#### Action Plan

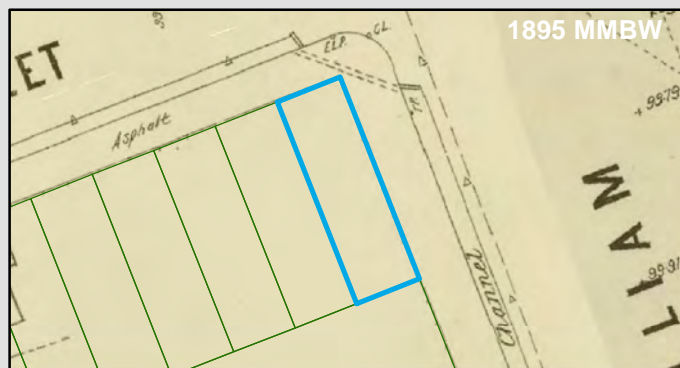
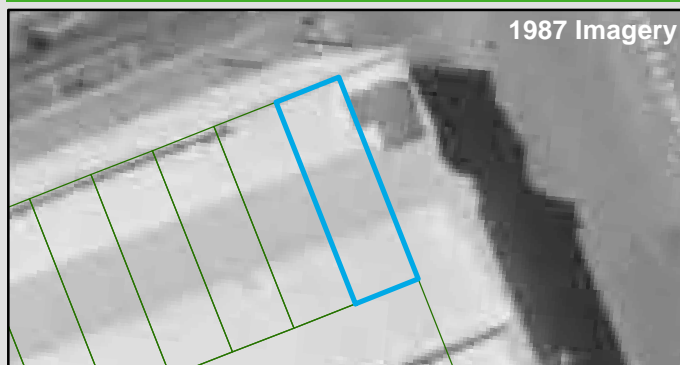
##### EAO Recommendation

**Apply EAO**

##### EAO Comment

Historical industrial/commercial building with documented or likely past industrial use with possible high potential for contamination.

#### Resources used to make decision



#### Site Use Summary

**Current Land Use**  
Residential

**Historic Land Use**  
Commercial

#### Key Information Supporting EAO Decision

Unknown current or past industrial use identified on site.

#### Additional Considerations

#### Resources used to make decision

Site inspection, Historical aerial photographs (1968/9 & 1987)

WEST MELBOURNE EAO - AMENDMENT C309 -  
WEST MELBOURNE STRUCTURE PLAN:  
PRELIMINARY LAND CONTAMINATION ASSESSMENT

CITY OF MELBOURNE

**GIS ID: 5212**

#### COPYRIGHT

Aerial Imagery copyright  
City of Melbourne

0 3 6 12 18 24 30 metres

**SCALE (at A4) (BUILDING MAP) 1:600**  
DATUM GDA 94, PROJECTION MGA Zone 55

**PROJECT: 18113718**  
**DATE: 27 FEB 2019**  
**DRAWN: TPC**  
**CHECKED: IMK**



Information contained on this drawing is the copyright of Golder Associates Pty. Ltd. Unauthorised use or reproduction of this plan either wholly or in part without written permission infringes copyright. © Golder Associates Pty. Ltd.

CoM Property ID: 555184

Electres 33 Jeffcott Street WEST MELBOURNE VIC 3003



#### LEGEND

 Parcel Boundary



#### Action Plan

##### EAO Recommendation

**Apply EAO**

##### EAO Comment

Site has been identified as being potentially contaminated in accordance with the Potentially Contaminated Land General Practice Note (DSE, 2005)

#### Site Use Summary

**Current Land Use**  
Industrial

**Historic Land Use**  
Industrial

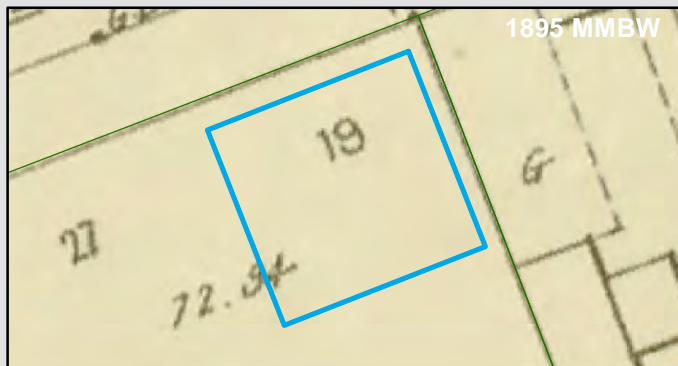
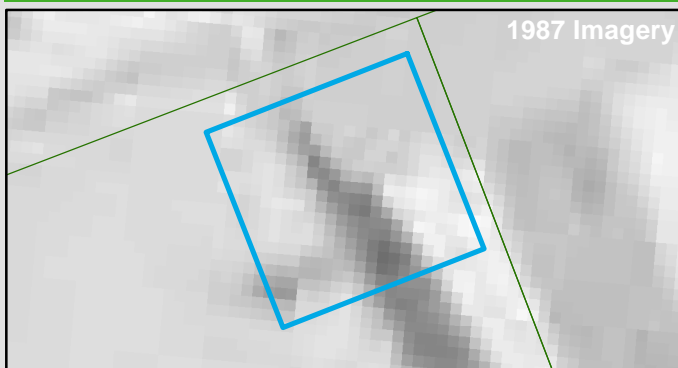
##### Key Information Supporting EAO Decision

Potentially contaminating land use/s identified on site as listed in the DSE General Practice Note (2005): Electricity generation/power Station

##### Additional Considerations

Substation on site.

#### Resources used to make decision



##### Resources used to make decision

City of Melbourne interactive map (2019), Site inspection, Historical aerial photographs (1968/9 & 1987)

WEST MELBOURNE EAO - AMENDMENT C309 -  
WEST MELBOURNE STRUCTURE PLAN:  
PRELIMINARY LAND CONTAMINATION ASSESSMENT

CITY OF MELBOURNE

**GIS ID: 13737**

##### COPYRIGHT

Aerial Imagery copyright  
City of Melbourne

0 1 2 4 6 8 10 metres

**SCALE (at A4) (BUILDING MAP) 1:200**  
DATUM GDA 94, PROJECTION MGA Zone 55

**PROJECT: 18113718**  
**DATE: 27 FEB 2019**  
**DRAWN: TPC**  
**CHECKED: IMK**





Information contained on this drawing is the copyright of Golder Associates Pty. Ltd. Unauthorised use or reproduction of this plan either wholly or in part without written permission infringes copyright. © Golder Associates Pty. Ltd.

CoM Property ID: 558175

184-186 Stanley Street WEST MELBOURNE VIC 3003



#### LEGEND

 Parcel Boundary

#### Action Plan

##### EAO Recommendation

**Apply EAO**

##### EAO Comment

Historical industrial/commercial building with documented or likely past industrial use with possible high potential for contamination.

#### Site Use Summary

**Current Land Use**  
Residential

**Historic Land Use**  
Other (unsure)

##### Key Information Supporting EAO Decision

Unknown current or past industrial use identified on site.

##### Additional Considerations

#### Resources used to make decision



##### Resources used to make decision

Site inspection, Historical aerial photographs (1968/9 & 1987)

WEST MELBOURNE EAO - AMENDMENT C309 -  
WEST MELBOURNE STRUCTURE PLAN:  
PRELIMINARY LAND CONTAMINATION ASSESSMENT

CITY OF MELBOURNE

**GIS ID: 7049**

##### COPYRIGHT

Aerial Imagery copyright  
City of Melbourne

0 2 4 8 12 16 20 metres

**SCALE (at A4) (BUILDING MAP) 1:400**  
DATUM GDA 94, PROJECTION MGA Zone 55

**PROJECT: 18113718**  
**DATE: 27 FEB 2019**  
**DRAWN: TPC**  
**CHECKED: IMK**



**GOLDER**

Information contained on this drawing is the copyright of Golder Associates Pty. Ltd. Unauthorised use or reproduction of this plan either wholly or in part without written permission infringes copyright. © Golder Associates Pty. Ltd.

CoM Property ID: 558176

158 Adderley Street WEST MELBOURNE VIC 3003



#### LEGEND

 Parcel Boundary

### Action Plan

#### EAO Recommendation

**Apply EAO**

#### EAO Comment

Historical industrial/commercial building with documented or likely past industrial use with possible high potential for contamination.

### Site Use Summary

**Current Land Use**  
Residential

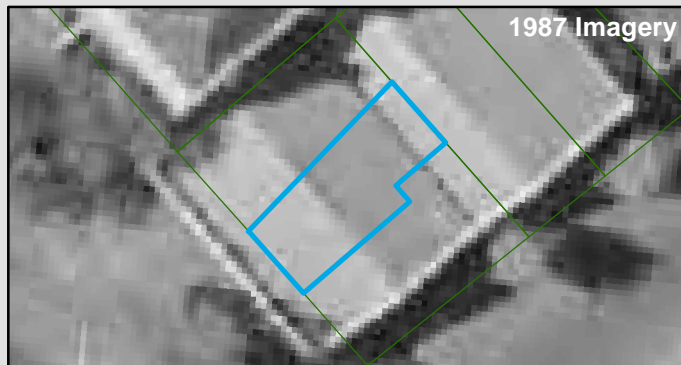
**Historic Land Use**  
Other (unsure)

#### Key Information Supporting EAO Decision

Unknown current or past industrial use identified on site.

#### Additional Considerations

### Resources used to make decision



#### Resources used to make decision

City of Melbourne interactive map (2019), Site inspection, Historical aerial photographs (1968/9 & 1987)

WEST MELBOURNE EAO - AMENDMENT C309 -  
WEST MELBOURNE STRUCTURE PLAN:  
PRELIMINARY LAND CONTAMINATION ASSESSMENT

CITY OF MELBOURNE

**GIS ID: 7048**

#### COPYRIGHT

Aerial Imagery copyright  
City of Melbourne

0 2 4 8 12 16 20 metres

**SCALE (at A4) (BUILDING MAP) 1:400**  
DATUM GDA 94, PROJECTION MGA Zone 55

**PROJECT: 18113718**  
**DATE: 27 FEB 2019**  
**DRAWN: TPC**  
**CHECKED: IMK**





Information contained on this drawing is the copyright of Golder Associates Pty. Ltd. Unauthorised use or reproduction of this plan either wholly or in part without written permission infringes copyright. © Golder Associates Pty. Ltd.

CoM Property ID: 558177

160 Adderley Street WEST MELBOURNE VIC 3003



#### LEGEND

 Parcel Boundary



#### Action Plan

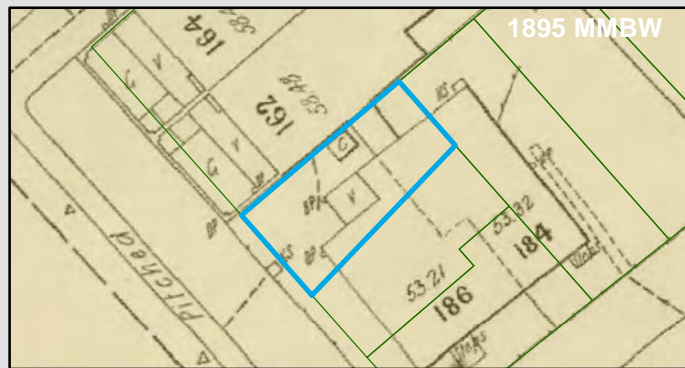
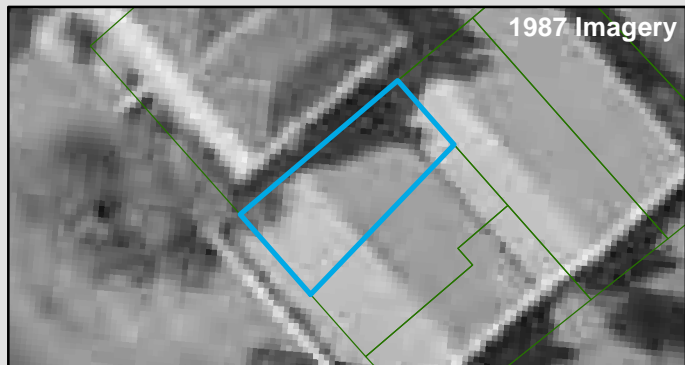
##### EAO Recommendation

**Apply EAO**

##### EAO Comment

Historical industrial/commercial building with documented or likely past industrial use with possible high potential for contamination.

#### Resources used to make decision



#### Site Use Summary

**Current Land Use**  
Residential

**Historic Land Use**  
Industrial

#### Key Information Supporting EAO Decision

Unknown current or past industrial use identified on site.

#### Additional Considerations

#### Resources used to make decision

City of Melbourne interactive map (2019), Site inspection, Historical aerial photographs (1968/9 & 1987)

WEST MELBOURNE EAO - AMENDMENT C309 -  
WEST MELBOURNE STRUCTURE PLAN:  
PRELIMINARY LAND CONTAMINATION ASSESSMENT

CITY OF MELBOURNE

**GIS ID: 7047**

#### COPYRIGHT

Aerial Imagery copyright  
City of Melbourne

0 2 4 8 12 16 20 metres

**SCALE (at A4) (BUILDING MAP) 1:400**  
DATUM GDA 94, PROJECTION MGA Zone 55

**PROJECT: 18113718**  
**DATE: 27 FEB 2019**  
**DRAWN: TPC**  
**CHECKED: IMK**



**GOLDER**

CoM Property ID: 558813

38 Walsh Street WEST MELBOURNE VIC 3003



#### LEGEND

 Parcel Boundary



#### Action Plan

##### EAO Recommendation

**Apply EAO**

##### EAO Comment

Historical industrial/commercial building with documented or likely past industrial use with possible high potential for contamination.

#### Resources used to make decision



1987 Imagery

#### Site Use Summary

**Current Land Use**  
Residential

**Historic Land Use**  
Other (unsure)



1895 MMBW

#### Key Information Supporting EAO Decision

Unknown current or past industrial use identified on site.

#### Additional Considerations

#### Resources used to make decision

West Melbourne Heritage Review Appendix 2 (May 2016), Site inspection, Historical aerial photographs (1968/9 & 1987)

WEST MELBOURNE EAO - AMENDMENT C309 -  
WEST MELBOURNE STRUCTURE PLAN:  
PRELIMINARY LAND CONTAMINATION ASSESSMENT

CITY OF MELBOURNE

**GIS ID: 7052**

#### COPYRIGHT

Aerial Imagery copyright  
City of Melbourne

0 5 10 20 30 40 50 metres

**SCALE (at A4) (BUILDING MAP) 1:1,000**  
DATUM GDA 94, PROJECTION MGA Zone 55

**PROJECT: 18113718**  
**DATE: 27 FEB 2019**  
**DRAWN: TPC**  
**CHECKED: IMK**

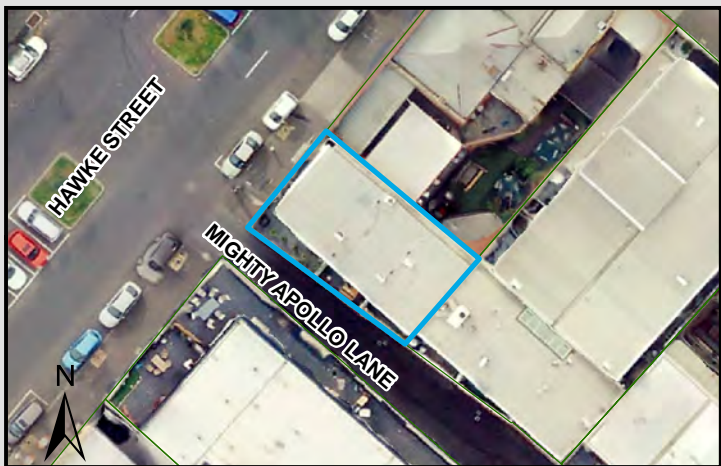




Information contained on this drawing is the copyright of Golder Associates Pty. Ltd. Unauthorised use or reproduction of this plan either wholly or in part without written permission infringes copyright. © Golder Associates Pty. Ltd.

CoM Property ID: 559228

95-99 Hawke Street WEST MELBOURNE VIC 3003



LEGEND

 Parcel Boundary



Action Plan

EAO Recommendation

**Apply EAO**

EAO Comment

Site has been identified as being potentially contaminated in accordance with the Potentially Contaminated Land General Practice Note (DSE, 2005)

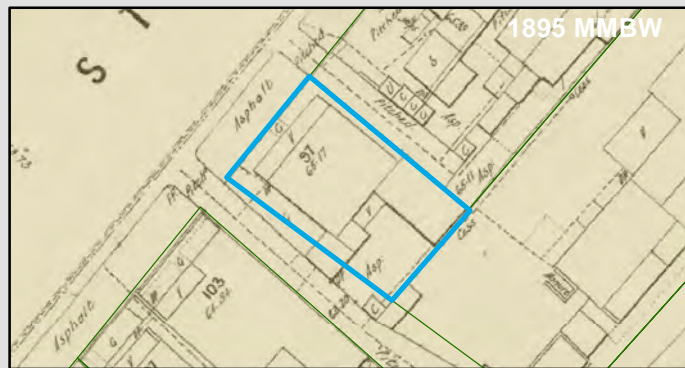
Resources used to make decision



Site Use Summary

**Current Land Use**  
Commercial

**Historic Land Use**  
Industrial



Key Information Supporting EAO Decision

Potentially contaminating land use/s identified on site as listed in the DSE General Practice Note (2005): Chemical Manufacturing/storage/blending

Additional Considerations

Formerly 'Lever Brothers Pty. Ltd.' soap factory.

Resources used to make decision

West Melbourne Heritage Review Appendix 2 (May 2016), Site inspection, Historical aerial photographs (1968/9 & 1987)

WEST MELBOURNE EAO - AMENDMENT C309 -  
WEST MELBOURNE STRUCTURE PLAN:  
PRELIMINARY LAND CONTAMINATION ASSESSMENT

CITY OF MELBOURNE

**GIS ID: 7055**

COPYRIGHT

Aerial Imagery copyright  
City of Melbourne

0 3.5 7 14 21 28 35 metres

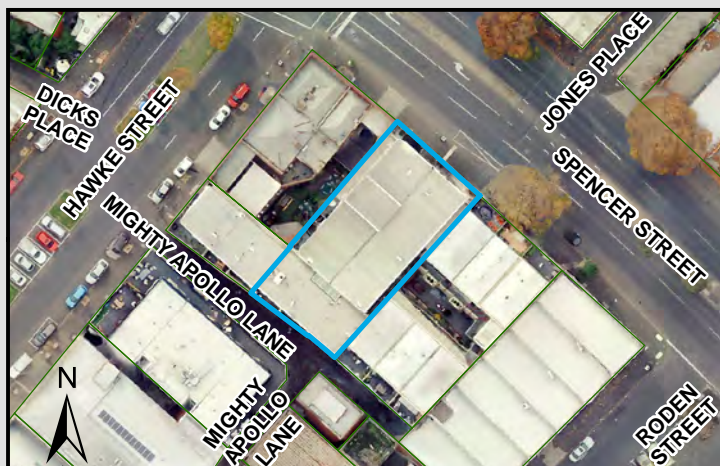
**SCALE (at A4) (BUILDING MAP) 1:700**  
DATUM GDA 94, PROJECTION MGA Zone 55

**PROJECT: 18113718**  
**DATE: 27 FEB 2019**  
**DRAWN: TPC**  
**CHECKED: IMK**



CoM Property ID: 559229

567-571 Spencer Street WEST MELBOURNE VIC 3003



#### LEGEND

 Parcel Boundary

#### Action Plan

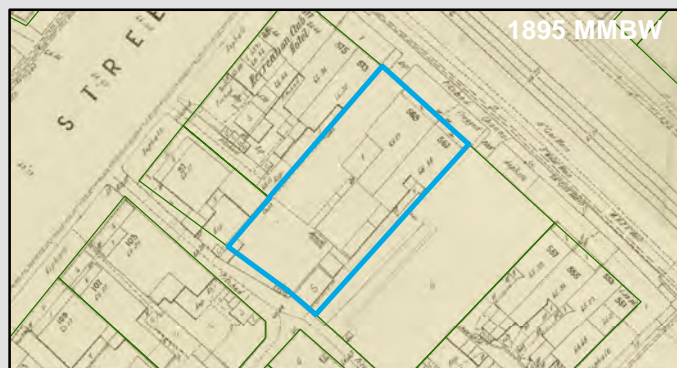
##### EAO Recommendation

**Apply EAO**

##### EAO Comment

Historical industrial/commercial building with documented or likely past industrial use with possible high potential for contamination.

#### Resources used to make decision



#### Site Use Summary

**Current Land Use**  
Commercial

**Historic Land Use**  
Commercial

#### Key Information Supporting EAO Decision

Unknown current or past industrial use identified on site.

#### Additional Considerations

Company name listed - 'Lever Brothers Pty. Ltd. soap manufacturers offices'.

#### Resources used to make decision

West Melbourne Heritage Review Appendix 2 (May 2016), Site inspection, Historical aerial photographs (1968/9 & 1987)

WEST MELBOURNE EAO - AMENDMENT C309 -  
WEST MELBOURNE STRUCTURE PLAN:  
PRELIMINARY LAND CONTAMINATION ASSESSMENT

CITY OF MELBOURNE

**GIS ID: 7054**

#### COPYRIGHT

Aerial Imagery copyright  
City of Melbourne

0 5 10 20 30 40 50 metres

**SCALE (at A4) (BUILDING MAP) 1:1,300**  
DATUM GDA 94, PROJECTION MGA Zone 55

**PROJECT: 18113718**  
**DATE: 27 FEB 2019**  
**DRAWN: TPC**  
**CHECKED: IMK**





CoM Property ID: 568042

37-47 Rosslyn Street WEST MELBOURNE VIC 3003



#### LEGEND

 Parcel Boundary



### Action Plan

#### EAO Recommendation

**Apply EAO**

#### EAO Comment

Site has been issued with a Statement of Environmental Audit with Conditions that require ongoing management for sensitive uses. (Carms No. 44867-2)

### Resources used to make decision



### Site Use Summary

**Current Land Use**  
Residential

**Historic Land Use**  
Industrial



#### Key Information Supporting EAO Decision

Potentially contaminating land use/s identified on site as listed in the DSE General Practice Note (2005): Printing shops

#### Additional Considerations

Formerly occupied by Southdown Press printing factory and storage. EPA Audit report states that two former petrol USTs were removed from the northern section of the site in 1999.

#### Resources used to make decision

EPA Audits (53X and 53V), Site inspection, Historical aerial photographs (1968/9 & 1987),

WEST MELBOURNE EAO - AMENDMENT C309 -  
WEST MELBOURNE STRUCTURE PLAN:  
PRELIMINARY LAND CONTAMINATION ASSESSMENT

CITY OF MELBOURNE

**GIS ID: 7039**

#### COPYRIGHT

Aerial Imagery copyright  
City of Melbourne

0 5 10 20 30 40 50 metres

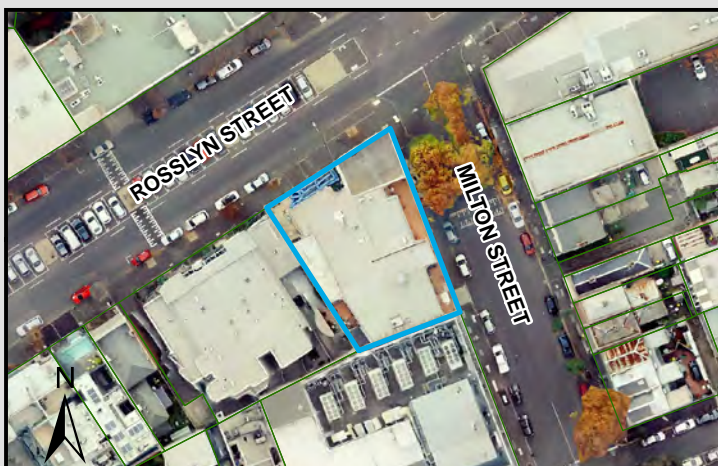
**SCALE (at A4) (BUILDING MAP) 1:1,300**  
DATUM GDA 94, PROJECTION MGA Zone 55

**PROJECT: 18113718**  
**DATE: 27 FEB 2019**  
**DRAWN: TPC**  
**CHECKED: IMK**



CoM Property ID: 568043

37-49 Milton Street WEST MELBOURNE VIC 3003



#### LEGEND

 Parcel Boundary



#### Action Plan

##### EAO Recommendation

**Apply EAO**

##### EAO Comment

Site has been identified as being potentially contaminated in accordance with the Potentially Contaminated Land General Practice Note (DSE, 2005)

#### Resources used to make decision



#### Site Use Summary

**Current Land Use**  
Residential

**Historic Land Use**  
Industrial



##### Key Information Supporting EAO Decision

Potentially contaminating land use/s identified on site as listed in the DSE General Practice Note (2005): Breweries/distilleries

##### Additional Considerations

Formerly 'Gilbey, W. and A. Ltd distillery and bottling plant'.

##### Resources used to make decision

West Melbourne Heritage Review Appendix 2 (May 2016), Site inspection, Historical aerial photographs (1968/9 & 1987), EPA Audits (53X and 53V)

WEST MELBOURNE EAO - AMENDMENT C309 -  
WEST MELBOURNE STRUCTURE PLAN:  
PRELIMINARY LAND CONTAMINATION ASSESSMENT

CITY OF MELBOURNE

**GIS ID: 7038**

##### COPYRIGHT

Aerial Imagery copyright  
City of Melbourne

0 5 10 20 30 40 50 metres

**SCALE (at A4) (BUILDING MAP) 1:1,400**  
DATUM GDA 94, PROJECTION MGA Zone 55

**PROJECT: 18113718**  
**DATE: 27 FEB 2019**  
**DRAWN: TPC**  
**CHECKED: IMK**





Information contained on this drawing is the copyright of Golder Associates Pty. Ltd. Unauthorised use or reproduction of this plan either wholly or in part without written permission infringes copyright. © Golder Associates Pty. Ltd.

CoM Property ID: 568044

22-36 Walsh Street WEST MELBOURNE VIC 3003



#### LEGEND

 Parcel Boundary



#### Action Plan

##### EAO Recommendation

**Apply EAO**

##### EAO Comment

Historical industrial/commercial building with documented or likely past industrial use with possible high potential for contamination.

#### Resources used to make decision



#### Site Use Summary

**Current Land Use**  
Commercial

**Historic Land Use**  
Other (unsure)



##### Key Information Supporting EAO Decision

Unknown current or past industrial use identified on site.

##### Additional Considerations

##### Resources used to make decision

West Melbourne Heritage Review Appendix 2 (May 2016), Site inspection, Historical aerial photographs (1968/9 & 1987)

WEST MELBOURNE EAO - AMENDMENT C309 -  
WEST MELBOURNE STRUCTURE PLAN:  
PRELIMINARY LAND CONTAMINATION ASSESSMENT

CITY OF MELBOURNE

**GIS ID: 7040**

##### COPYRIGHT

Aerial Imagery copyright  
City of Melbourne

0 5 10 20 30 40 50 metres

**SCALE (at A4) (BUILDING MAP) 1:1,400**  
DATUM GDA 94, PROJECTION MGA Zone 55

**PROJECT: 18113718**  
**DATE: 27 FEB 2019**  
**DRAWN: TPC**  
**CHECKED: IMK**



Information contained on this drawing is the copyright of Golder Associates Pty. Ltd. Unauthorised use or reproduction of this plan either wholly or in part without written permission infringes copyright. © Golder Associates Pty. Ltd.

CoM Property ID: 568593

661-667 Spencer Street WEST MELBOURNE VIC 3003



#### LEGEND

 Parcel Boundary



#### Action Plan

##### EAO Recommendation

**Apply EAO**

##### EAO Comment

Historical industrial/commercial building with documented or likely past industrial use with possible high potential for contamination.

#### Site Use Summary

**Current Land Use**  
Commercial

**Historic Land Use**  
Industrial

#### Key Information Supporting EAO Decision

Unknown current or past industrial use identified on site.

#### Additional Considerations

Refurbished brick warehouses. 1895 plans indicate residential use, 1987 aerials show buildings typical of warehouse onsite.

#### Resources used to make decision



#### Resources used to make decision

West Melbourne Heritage Review Appendix 2 (May 2016), Site inspection, Historical aerial photographs (1968/9 & 1987)

WEST MELBOURNE EAO - AMENDMENT C309 -  
WEST MELBOURNE STRUCTURE PLAN:  
PRELIMINARY LAND CONTAMINATION ASSESSMENT

CITY OF MELBOURNE

**GIS ID: 8789**

#### COPYRIGHT

Aerial Imagery copyright  
City of Melbourne

0 4.5 9 18 27 36 45 metres

**SCALE (at A4) (BUILDING MAP) 1:900**  
DATUM GDA 94, PROJECTION MGA Zone 55

**PROJECT: 18113718**  
**DATE: 27 FEB 2019**  
**DRAWN: TPC**  
**CHECKED: IMK**





CoM Property ID: 569276

34-36 Jeffcott Street WEST MELBOURNE VIC 3003



#### LEGEND

 Parcel Boundary



### Action Plan

#### EAO Recommendation

**Apply EAO**

#### EAO Comment

Site has been identified as being potentially contaminated in accordance with the Potentially Contaminated Land General Practice Note (DSE, 2005)

### Site Use Summary

**Current Land Use**  
Commercial

**Historic Land Use**  
Industrial

#### Key Information Supporting EAO Decision

Potentially contaminating land use/s identified on site as listed in the DSE General Practice Note (2005): Oil or gas production/refining, Underground storage tank (Medium Potential)

#### Additional Considerations

Former warehouse for W. K. Burnside Pty Ltd. Evagreen Eucalyptus oil manufacturer and distributor. 1969 and 1987 aerials show a saw tooth roof, which is indicative of historic industrial activity.

### Resources used to make decision



#### Resources used to make decision

City of Melbourne interactive map (2019), Site inspection, Historical aerial photographs (1968/9 & 1987)

WEST MELBOURNE EAO - AMENDMENT C309 -  
WEST MELBOURNE STRUCTURE PLAN:  
PRELIMINARY LAND CONTAMINATION ASSESSMENT

CITY OF MELBOURNE

**GIS ID: 8809**

#### COPYRIGHT

Aerial Imagery copyright  
City of Melbourne

0 5 10 20 30 40 50 metres

**SCALE (at A4) (BUILDING MAP) 1:1,800**  
DATUM GDA 94, PROJECTION MGA Zone 55

**PROJECT: 18113718**  
**DATE: 27 FEB 2019**  
**DRAWN: TPC**  
**CHECKED: IMK**



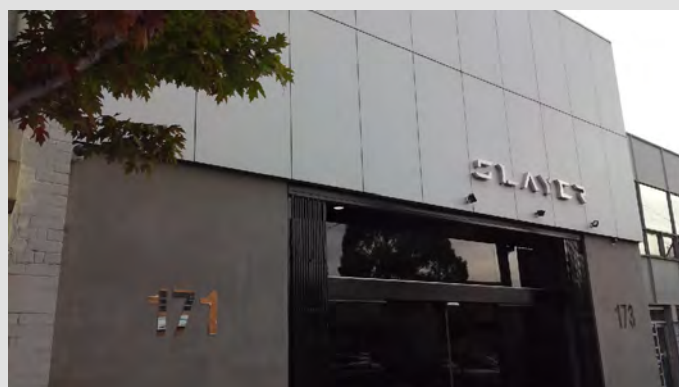
CoM Property ID: 573776

248-250 Rosslyn Street WEST MELBOURNE VIC 3003



#### LEGEND

 Parcel Boundary



#### Action Plan

##### EAO Recommendation

**Apply EAO**

##### EAO Comment

Historical industrial/commercial building with documented or likely past industrial use with possible high potential for contamination.

#### Site Use Summary

**Current Land Use**  
Commercial

**Historic Land Use**  
Other (unsure)

#### Key Information Supporting EAO Decision

Unknown current or past industrial use identified on site.

#### Additional Considerations

1859 indicates non residential building onsite, 1987 shows flat roof warehouse type building. Currently new office block.

#### Resources used to make decision



#### Resources used to make decision

Site Inspection,  
MMBW Maps (1895),  
Historical aerial photographs,  
Current aerial photographs (May 2018)

WEST MELBOURNE EAO - AMENDMENT C309 -  
WEST MELBOURNE STRUCTURE PLAN:  
PRELIMINARY LAND CONTAMINATION ASSESSMENT

CITY OF MELBOURNE

**GIS ID: 8800**

#### COPYRIGHT

Aerial Imagery copyright  
City of Melbourne

0 5 10 20 30 40 50 metres

**SCALE (at A4) (BUILDING MAP) 1:1,500**  
DATUM GDA 94, PROJECTION MGA Zone 55

**PROJECT: 18113718**  
**DATE: 27 FEB 2019**  
**DRAWN: TPC**  
**CHECKED: IMK**





Information contained on this drawing is the copyright of Golder Associates Pty. Ltd. Unauthorised use or reproduction of this plan either wholly or in part without written permission infringes copyright. © Golder Associates Pty. Ltd.

CoM Property ID: 573825

33-43 Batman Street WEST MELBOURNE VIC 3003



#### LEGEND

 Parcel Boundary



#### Action Plan

##### EAO Recommendation

**Apply EAO**

##### EAO Comment

Historical industrial/commercial building with documented or likely past industrial use with possible high potential for contamination.

#### Resources used to make decision



#### Site Use Summary

**Current Land Use**  
Residential

**Historic Land Use**  
Industrial



##### Key Information Supporting EAO Decision

Unknown current or past industrial use identified on site.

##### Additional Considerations

Company name listed - "W. O'Donnell Engineer works". Aerials show a saw tooth roof on site, which indicates likely past industrial use.

##### Resources used to make decision

City of Melbourne interactive map (2019), Site inspection, Historical aerial photographs (1968/9 & 1987), MMBW Maps (1895)

WEST MELBOURNE EAO - AMENDMENT C309 -  
WEST MELBOURNE STRUCTURE PLAN:  
PRELIMINARY LAND CONTAMINATION ASSESSMENT

CITY OF MELBOURNE

**GIS ID: 8804**

##### COPYRIGHT

Aerial Imagery copyright  
City of Melbourne

0 5 10 20 30 40 50 metres

**SCALE (at A4) (BUILDING MAP) 1:1,900**  
DATUM GDA 94, PROJECTION MGA Zone 55

**PROJECT: 18113718**  
**DATE: 27 FEB 2019**  
**DRAWN: TPC**  
**CHECKED: IMK**



Information contained on this drawing is the copyright of Golder Associates Pty. Ltd. Unauthorised use or reproduction of this plan either wholly or in part without written permission infringes copyright. © Golder Associates Pty. Ltd.

CoM Property ID: 573826

45-47 Batman Street WEST MELBOURNE VIC 3003



#### LEGEND

 Parcel Boundary



#### Action Plan

##### EAO Recommendation

**Apply EAO**

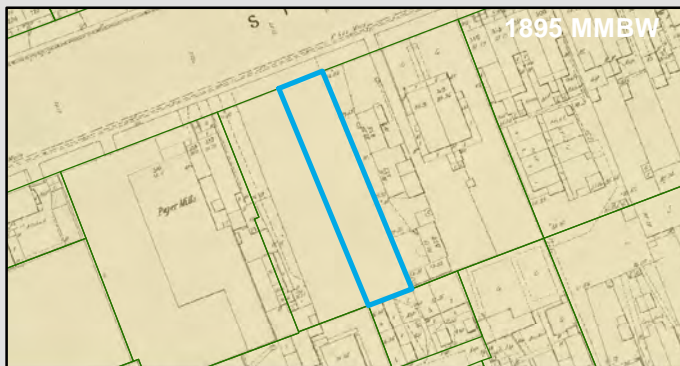
##### EAO Comment

Site has been identified as being potentially contaminated in accordance with the Potentially Contaminated Land General Practice Note (DSE, 2005)

#### Resources used to make decision



1987 Imagery



1895 MMBW

#### Site Use Summary

**Current Land Use**  
Industrial

**Historic Land Use**  
Industrial

#### Key Information Supporting EAO Decision

Potentially contaminating land use/s identified on site as listed in the DSE General Practice Note (2005): Metal finishing and treatments

#### Additional Considerations

Formerly Excelsior Can works.

#### Resources used to make decision

Site inspection, Historical aerial photographs (1968/9 & 1987), MMBW Maps (1895)

WEST MELBOURNE EAO - AMENDMENT C309 -  
WEST MELBOURNE STRUCTURE PLAN:  
PRELIMINARY LAND CONTAMINATION ASSESSMENT

CITY OF MELBOURNE

**GIS ID: 8805**

#### COPYRIGHT

Aerial Imagery copyright  
City of Melbourne

0 5 10 20 30 40 50 metres

**SCALE (at A4) (BUILDING MAP) 1:1,700**  
DATUM GDA 94, PROJECTION MGA Zone 55

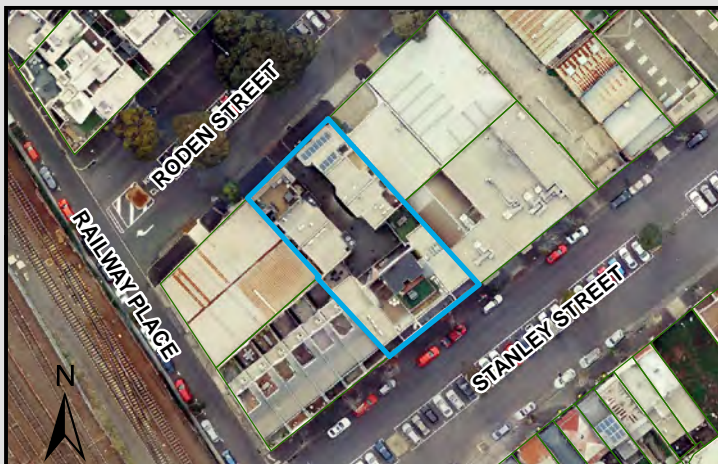
**PROJECT: 18113718**  
**DATE: 27 FEB 2019**  
**DRAWN: TPC**  
**CHECKED: IMK**





CoM Property ID: 579360

227-235 Roden Street WEST MELBOURNE VIC 3003



#### LEGEND

 Parcel Boundary



#### Action Plan

##### EAO Recommendation

**Apply EAO**

##### EAO Comment

Site has been identified as being potentially contaminated in accordance with the Potentially Contaminated Land General Practice Note (DSE, 2005)

#### Site Use Summary

**Current Land Use**  
Residential

**Historic Land Use**  
Industrial

#### Key Information Supporting EAO Decision

Potentially contaminating land use/s identified on site as listed in the DSE General Practice Note (2005): Other industrial activities (Medium Potential)

#### Additional Considerations

1895 indicates some buildings not typically residential. 1987 aerial indicates industrial type building with a saw tooth roof. Aerials show a saw tooth roof on site, which indicates likely past industrial use

#### Resources used to make decision



#### Resources used to make decision

Site inspection, Historical aerial photographs (1968/9 & 1987), MMBW Maps (1895)

WEST MELBOURNE EAO - AMENDMENT C309 -  
WEST MELBOURNE STRUCTURE PLAN:  
PRELIMINARY LAND CONTAMINATION ASSESSMENT

CITY OF MELBOURNE

**GIS ID: 8783**

#### COPYRIGHT

Aerial Imagery copyright  
City of Melbourne

0 5 10 20 30 40 50 metres

**SCALE (at A4) (BUILDING MAP) 1:1,500**  
DATUM GDA 94, PROJECTION MGA Zone 55

**PROJECT: 18113718**  
**DATE: 27 FEB 2019**  
**DRAWN: TPC**  
**CHECKED: IMK**



Information contained on this drawing is the copyright of Golder Associates Pty. Ltd. Unauthorised use or reproduction of this plan either wholly or in part without written permission infringes copyright. © Golder Associates Pty. Ltd.

CoM Property ID: 579361

240-250 Stanley Street WEST MELBOURNE VIC 3003



#### LEGEND

 Parcel Boundary



#### Action Plan

##### EAO Recommendation

**Apply EAO**

##### EAO Comment

Site has been identified as being potentially contaminated in accordance with the Potentially Contaminated Land General Practice Note (DSE, 2005)

#### Resources used to make decision



#### Site Use Summary

**Current Land Use**  
Residential

**Historic Land Use**  
Industrial

#### Key Information Supporting EAO Decision

Potentially contaminating land use/s identified on site as listed in the DSE General Practice Note (2005): Printing shops

#### Additional Considerations

Converted from early 1900's Fitchett Brother's factory.

#### Resources used to make decision

City of Melbourne interactive map (2019), Site inspection, Historical aerial photographs (1968/9 & 1987), MMBW Maps (1895)

WEST MELBOURNE EAO - AMENDMENT C309 -  
WEST MELBOURNE STRUCTURE PLAN:  
PRELIMINARY LAND CONTAMINATION ASSESSMENT

CITY OF MELBOURNE

**GIS ID: 8782**

#### COPYRIGHT

Aerial Imagery copyright  
City of Melbourne

0 5 10 20 30 40 50 metres

**SCALE (at A4) (BUILDING MAP) 1:1,100**  
DATUM GDA 94, PROJECTION MGA Zone 55

**PROJECT: 18113718**  
**DATE: 27 FEB 2019**  
**DRAWN: TPC**  
**CHECKED: IMK**





Information contained on this drawing is the copyright of Golder Associates Pty. Ltd. Unauthorised use or reproduction of this plan either wholly or in part without written permission infringes copyright. © Golder Associates Pty. Ltd.

CoM Property ID: 579421

117 Abbotsford Street WEST MELBOURNE VIC 3003



#### LEGEND

 Parcel Boundary

#### Action Plan

##### EAO Recommendation

**Apply EAO**

##### EAO Comment

Site is subject to potential contamination from an offsite source.

#### Site Use Summary

**Current Land Use**  
Residential

**Historic Land Use**  
Residential

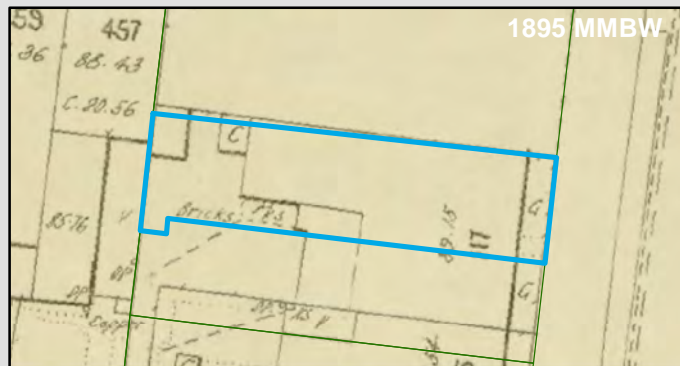
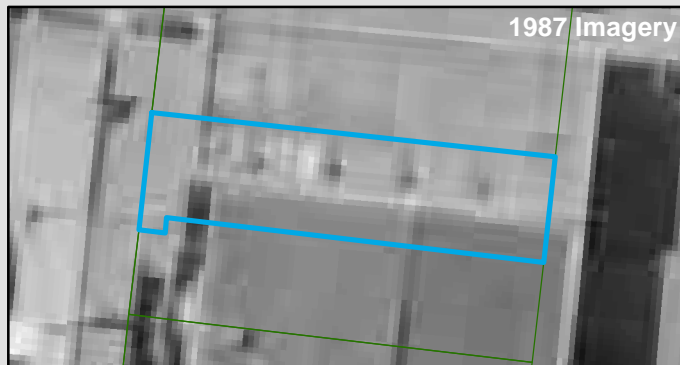
##### Key Information Supporting EAO Decision

Research indicates this site has currently and previously been used for residential purposes.

##### Additional Considerations

Concrete townhouse built in 2003.

#### Resources used to make decision



##### Resources used to make decision

West Melbourne Heritage Review Appendix 2 (May 2016), Site inspection, Historical aerial photographs (1968/9 & 1987)

WEST MELBOURNE EAO - AMENDMENT C309 -  
WEST MELBOURNE STRUCTURE PLAN:  
PRELIMINARY LAND CONTAMINATION ASSESSMENT

CITY OF MELBOURNE

**GIS ID: 8784**

##### COPYRIGHT

Aerial Imagery copyright  
City of Melbourne

0 2 4 8 12 16 20 metres

**SCALE (at A4) (BUILDING MAP) 1:400**  
DATUM GDA 94, PROJECTION MGA Zone 55

**PROJECT: 18113718**  
**DATE: 27 FEB 2019**  
**DRAWN: TPC**  
**CHECKED: IMK**



Information contained on this drawing is the copyright of Golder Associates Pty. Ltd. Unauthorised use or reproduction of this plan either wholly or in part without written permission infringes copyright. © Golder Associates Pty. Ltd.

CoM Property ID: 580237

180 Stanley Street WEST MELBOURNE VIC 3003



#### LEGEND

 Parcel Boundary



#### Action Plan

##### EAO Recommendation

**Apply EAO**

##### EAO Comment

Historical industrial/commercial building with documented or likely past industrial use with possible high potential for contamination.

#### Site Use Summary

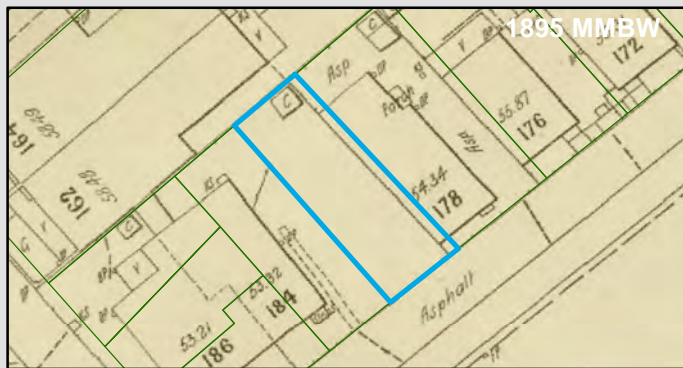
**Current Land Use**  
Residential

**Historic Land Use**  
Other (unsure)

##### Key Information Supporting EAO Decision

Unknown current or past industrial use identified on site.

#### Resources used to make decision



##### Additional Considerations

1895 indicates building onsite, not typical residential. 1987 indicates medium size warehouse, use unknown.

##### Resources used to make decision

Site Inspection,  
MMBW Maps (1895),  
Historical aerial photographs,  
Current aerial photographs (May 2018)

WEST MELBOURNE EAO - AMENDMENT C309 -  
WEST MELBOURNE STRUCTURE PLAN:  
PRELIMINARY LAND CONTAMINATION ASSESSMENT

CITY OF MELBOURNE

**GIS ID: 6493**

##### COPYRIGHT

Aerial Imagery copyright  
City of Melbourne

0 2.5 5 10 15 20 25 metres

**SCALE (at A4) (BUILDING MAP) 1:500**  
DATUM GDA 94, PROJECTION MGA Zone 55

**PROJECT: 18113718**  
**DATE: 27 FEB 2019**  
**DRAWN: TPC**  
**CHECKED: IMK**



**GOLDER**



Information contained on this drawing is the copyright of Golder Associates Pty. Ltd. Unauthorised use or reproduction of this plan either wholly or in part without written permission infringes copyright. © Golder Associates Pty. Ltd.

CoM Property ID: 580238

182 Stanley Street WEST MELBOURNE VIC 3003



#### LEGEND

 Parcel Boundary

#### Action Plan

##### EAO Recommendation

**Apply EAO**

##### EAO Comment

Historical industrial/commercial building with documented or likely past industrial use with possible high potential for contamination.

#### Site Use Summary

**Current Land Use**  
Residential

**Historic Land Use**  
Other (unsure)

##### Key Information Supporting EAO Decision

Unknown current or past industrial use identified on site.

##### Additional Considerations

1895 indicates building onsite, not typical residential. 1987 indicates medium size warehouse.

#### Resources used to make decision



##### Resources used to make decision

Site Inspection,  
MMBW Maps (1895),  
Historical aerial photographs,  
Current aerial photographs (May 2018)

WEST MELBOURNE EAO - AMENDMENT C309 -  
WEST MELBOURNE STRUCTURE PLAN:  
PRELIMINARY LAND CONTAMINATION ASSESSMENT

CITY OF MELBOURNE

**GIS ID: 12778**

##### COPYRIGHT

Aerial Imagery copyright  
City of Melbourne

0 2.5 5 10 15 20 25 metres

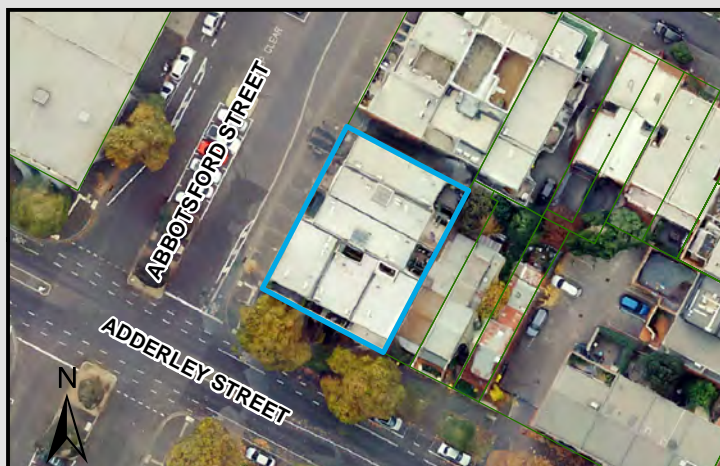
**SCALE (at A4) (BUILDING MAP) 1:500**  
DATUM GDA 94, PROJECTION MGA Zone 55

**PROJECT: 18113718**  
**DATE: 27 FEB 2019**  
**DRAWN: TPC**  
**CHECKED: IMK**



CoM Property ID: 592819

256-260 Adderley Street WEST MELBOURNE VIC 3003



#### LEGEND

 Parcel Boundary

#### Action Plan

##### EAO Recommendation

**Apply EAO**

##### EAO Comment

Historical industrial/commercial building with documented or likely past industrial use with possible high potential for contamination.

#### Site Use Summary

**Current Land Use**  
Residential

**Historic Land Use**  
Other (unsure)

##### Key Information Supporting EAO Decision

Unknown current or past industrial use identified on site.

##### Additional Considerations

#### Resources used to make decision



##### Resources used to make decision

West Melbourne Heritage Review Appendix 2 (May 2016), Site inspection, Historical aerial photographs (1968/9 & 1987)

WEST MELBOURNE EAO - AMENDMENT C309 -  
WEST MELBOURNE STRUCTURE PLAN:  
PRELIMINARY LAND CONTAMINATION ASSESSMENT

CITY OF MELBOURNE

**GIS ID: 4362**

##### COPYRIGHT

Aerial Imagery copyright  
City of Melbourne

0 5 10 20 30 40 50 metres

**SCALE (at A4) (BUILDING MAP) 1:1,100**  
DATUM GDA 94, PROJECTION MGA Zone 55

**PROJECT: 18113718**  
**DATE: 27 FEB 2019**  
**DRAWN: TPC**  
**CHECKED: IMK**





Information contained on this drawing is the copyright of Golder Associates Pty. Ltd. Unauthorised use or reproduction of this plan either wholly or in part without written permission infringes copyright. © Golder Associates Pty. Ltd.

CoM Property ID: 598268

339 King Street WEST MELBOURNE VIC 3003



#### LEGEND

 Parcel Boundary

#### Action Plan

##### EAO Recommendation

**Apply EAO**

##### EAO Comment

Historical industrial/commercial building with documented or likely past industrial use with possible high potential for contamination.

#### Site Use Summary

**Current Land Use**  
Commercial

**Historic Land Use**  
Other (unsure)

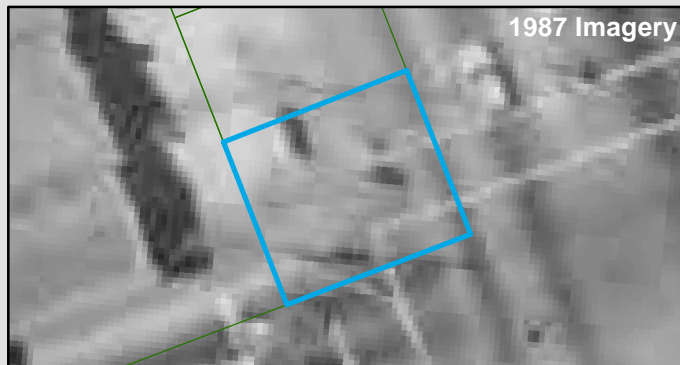
##### Key Information Supporting EAO Decision

Unknown current or past industrial use identified on site.

##### Additional Considerations

1969 Aerial shows buildings not likely used for residential purposes.  
Potential warehouse, use unknown.

#### Resources used to make decision



##### Resources used to make decision

Mahlstedt fire insurance maps (CBD 1923-25), Site inspection,  
Historical aerial photographs (1968/9 & 1987)

WEST MELBOURNE EAO - AMENDMENT C309 -  
WEST MELBOURNE STRUCTURE PLAN:  
PRELIMINARY LAND CONTAMINATION ASSESSMENT

CITY OF MELBOURNE

**GIS ID: 1796**

##### COPYRIGHT

Aerial Imagery copyright  
City of Melbourne

0 2 4 8 12 16 20 metres

**SCALE (at A4) (BUILDING MAP) 1:400**  
DATUM GDA 94, PROJECTION MGA Zone 55

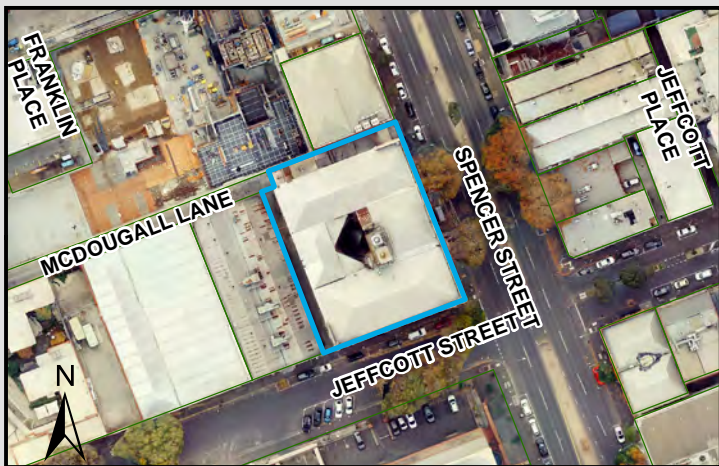
**PROJECT: 18113718**  
**DATE: 27 FEB 2019**  
**DRAWN: TPC**  
**CHECKED: IMK**



Information contained on this drawing is the copyright of Golder Associates Pty. Ltd. Unauthorised use or reproduction of this plan either wholly or in part without written permission infringes copyright. © Golder Associates Pty. Ltd.

CoM Property ID: 598605

355-369 Spencer Street WEST MELBOURNE VIC 3003



#### LEGEND

 Parcel Boundary



#### Action Plan

##### EAO Recommendation

**Apply EAO**

##### EAO Comment

Historical industrial/commercial building with documented or likely past industrial use with possible high potential for contamination.

#### Resources used to make decision



#### Site Use Summary

##### Current Land Use

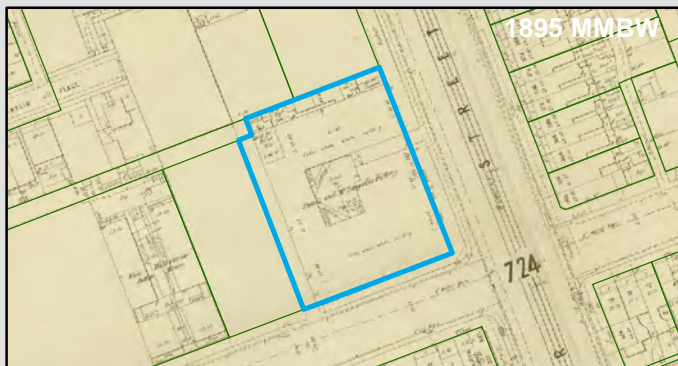
Public land (schools, hospitals, parks)

##### Historic Land Use

Commercial

#### Key Information Supporting EAO Decision

Unknown current or past industrial use identified on site.



#### Additional Considerations

#### Resources used to make decision

City of Melbourne interactive map (2019), Site Inspection, Mahlstedt fire insurance maps (CBD 1923-25), Historical aerial photographs

WEST MELBOURNE EAO - AMENDMENT C309 -  
WEST MELBOURNE STRUCTURE PLAN:  
PRELIMINARY LAND CONTAMINATION ASSESSMENT

CITY OF MELBOURNE

**GIS ID: 1020**

#### COPYRIGHT

Aerial Imagery copyright  
City of Melbourne

0 10 20 40 60 80 100 metres

**SCALE (at A4) (BUILDING MAP) 1:2,000**  
DATUM GDA 94, PROJECTION MGA Zone 55

**PROJECT: 18113718**  
**DATE: 27 FEB 2019**  
**DRAWN: TPC**  
**CHECKED: IMK**





CoM Property ID: 603439

38 Jeffcott Street WEST MELBOURNE VIC 3003



#### LEGEND

 Parcel Boundary



#### Action Plan

##### EAO Recommendation

**Apply EAO**

##### EAO Comment

Site has been identified as being potentially contaminated in accordance with the Potentially Contaminated Land General Practice Note (DSE, 2005)

#### Resources used to make decision



#### Site Use Summary

**Current Land Use**  
Residential

**Historic Land Use**  
Industrial

#### Key Information Supporting EAO Decision

Potentially contaminating land use/s identified on site as listed in the DSE General Practice Note (2005): Oil or gas production/refining, Underground storage tanks

#### Additional Considerations

Former warehouse for W. K. Burnside Pty Ltd. Evagreen Eucalyptus oil manufacturer and distributor. 1969 and 1987 aerials show a saw tooth roof, which is indicative of historic industrial activity.

#### Resources used to make decision

West Melbourne Heritage Review Appendix 2 (May 2016), Site inspection, Historical aerial photographs (1968/9 & 1987)

WEST MELBOURNE EAO - AMENDMENT C309 -  
WEST MELBOURNE STRUCTURE PLAN:  
PRELIMINARY LAND CONTAMINATION ASSESSMENT

CITY OF MELBOURNE

**GIS ID: 5260**

#### COPYRIGHT

Aerial Imagery copyright  
City of Melbourne

0 5 10 20 30 40 50 metres

**SCALE (at A4) (BUILDING MAP) 1:1,000**  
DATUM GDA 94, PROJECTION MGA Zone 55

**PROJECT: 18113718**  
**DATE: 27 FEB 2019**  
**DRAWN: TPC**  
**CHECKED: IMK**



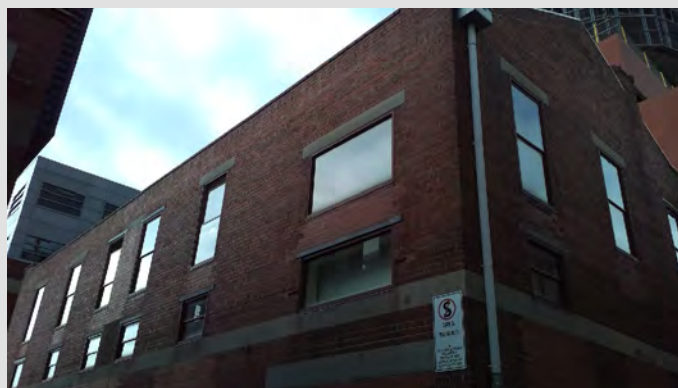
CoM Property ID: 613007

Unit 1 23 Franklin Place WEST MELBOURNE VIC 3003



#### LEGEND

 Parcel Boundary



#### Action Plan

##### EAO Recommendation

**Apply EAO**

##### EAO Comment

Historical industrial/commercial building with documented or likely past industrial use with possible high potential for contamination.

#### Site Use Summary

**Current Land Use**  
Residential

**Historic Land Use**  
Industrial

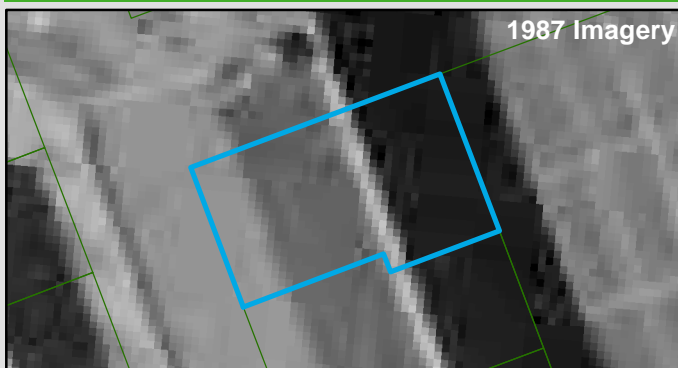
##### Key Information Supporting EAO Decision

Unknown current or past industrial use identified on site.

##### Additional Considerations

Formerly 'W. O'Donnell engineers workshop'.

#### Resources used to make decision



##### Resources used to make decision

West Melbourne Heritage Review Appendix 2 (May 2016), Site inspection, Historical aerial photographs (1968/9 & 1987)

WEST MELBOURNE EAO - AMENDMENT C309 -  
WEST MELBOURNE STRUCTURE PLAN:  
PRELIMINARY LAND CONTAMINATION ASSESSMENT

CITY OF MELBOURNE

**GIS ID: 13396**

##### COPYRIGHT

Aerial Imagery copyright  
City of Melbourne

0 1.5 3 6 9 12 15 metres

**SCALE (at A4) (BUILDING MAP) 1:300**  
DATUM GDA 94, PROJECTION MGA Zone 55

**PROJECT: 18113718**  
**DATE: 27 FEB 2019**  
**DRAWN: TPC**  
**CHECKED: IMK**





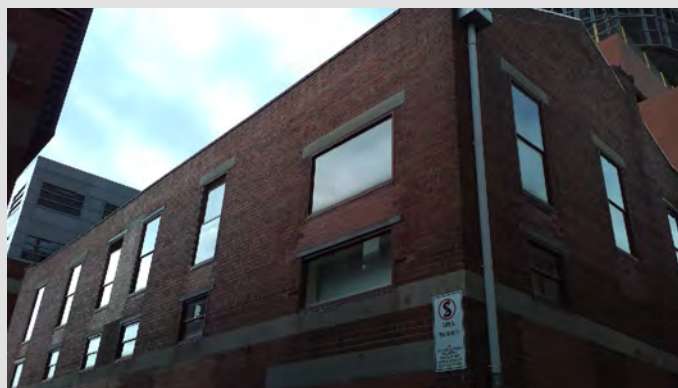
CoM Property ID: 613008

Unit 2 23 Franklin Place WEST MELBOURNE VIC 3003



#### LEGEND

 Parcel Boundary



#### Action Plan

##### EAO Recommendation

**Apply EAO**

##### EAO Comment

Historical industrial/commercial building with documented or likely past industrial use with possible high potential for contamination.

#### Site Use Summary

**Current Land Use**  
Residential

**Historic Land Use**  
Industrial

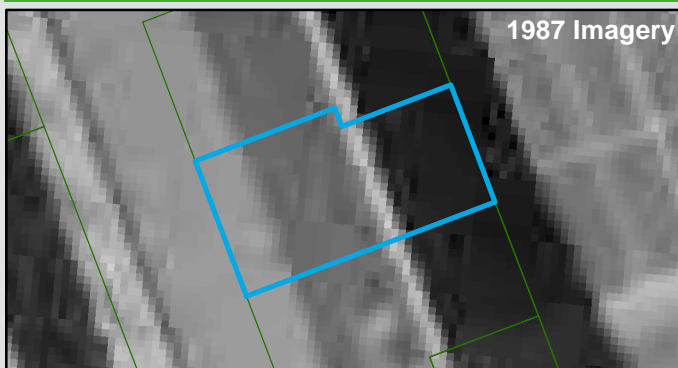
##### Key Information Supporting EAO Decision

Unknown current or past industrial use identified on site.

##### Additional Considerations

Formerly 'W. O'Donnell engineers workshop'.

#### Resources used to make decision



##### Resources used to make decision

West Melbourne Heritage Review Appendix 2 (May 2016), Site inspection, Historical aerial photographs (1968/9 & 1987)

WEST MELBOURNE EAO - AMENDMENT C309 -  
WEST MELBOURNE STRUCTURE PLAN:  
PRELIMINARY LAND CONTAMINATION ASSESSMENT

CITY OF MELBOURNE

**GIS ID: 13397**

##### COPYRIGHT

Aerial Imagery copyright  
City of Melbourne

0 1.5 3 6 9 12 15 metres

**SCALE (at A4) (BUILDING MAP) 1:300**  
DATUM GDA 94, PROJECTION MGA Zone 55

**PROJECT: 18113718**  
**DATE: 27 FEB 2019**  
**DRAWN: TPC**  
**CHECKED: IMK**

