

Information contained on this drawing is the copyright of Golder Associates Pty. Ltd. Unauthorised use or reproduction of this plan either wholly or in part without written permission infringes copyright. © Golder Associates Pty. Ltd.

CoM Property ID: 101913

3 Chetwynd Street WEST MELBOURNE VIC 3003



LEGEND

 Parcel Boundary

Action Plan

EAO Recommendation

Do Not Apply EAO

EAO Comment

Site has not identified as being potentially contaminated in accordance with the Potentially Contaminated Land General Practice Note (DSE, 2005)

Site Use Summary

Current Land Use
Residential

Historic Land Use
Residential

Key Information Supporting EAO Decision

Research indicates this site has currently and previously been used for residential purposes.

Additional Considerations

Resources used to make decision



Resources used to make decision

Site inspection, Historical aerial photographs (1968/9 & 1987)

WEST MELBOURNE EAO - AMENDMENT C309 -
WEST MELBOURNE STRUCTURE PLAN:
PRELIMINARY LAND CONTAMINATION ASSESSMENT

CITY OF MELBOURNE

GIS ID: 7659

COPYRIGHT

Aerial Imagery copyright
City of Melbourne

0 3 6 12 18 24 30 metres

SCALE (at A4) (BUILDING MAP) 1:600
DATUM GDA 94, PROJECTION MGA Zone 55

PROJECT: 18113718
DATE: 27 FEB 2019
DRAWN: TPC
CHECKED: IMK



Information contained on this drawing is the copyright of Golder Associates Pty. Ltd. Unauthorised use or reproduction of this plan either wholly or in part without written permission infringes copyright. © Golder Associates Pty. Ltd.

CoM Property ID: 101914

5 Chetwynd Street WEST MELBOURNE VIC 3003



LEGEND

 Parcel Boundary



Action Plan

EAO Recommendation

Do Not Apply EAO

EAO Comment

Site has not identified as being potentially contaminated in accordance with the Potentially Contaminated Land General Practice Note (DSE, 2005)

Resources used to make decision



Site Use Summary

Current Land Use
Residential

Historic Land Use
Residential



Key Information Supporting EAO Decision

Research indicates this site has currently and previously been used for residential purposes.

Additional Considerations

Resources used to make decision

Site inspection, Historical aerial photographs (1968/9 & 1987)

WEST MELBOURNE EAO - AMENDMENT C309 -
WEST MELBOURNE STRUCTURE PLAN:
PRELIMINARY LAND CONTAMINATION ASSESSMENT

CITY OF MELBOURNE

GIS ID: 7660

COPYRIGHT

Aerial Imagery copyright
City of Melbourne

0 3 6 12 18 24 30 metres

SCALE (at A4) (BUILDING MAP) 1:600
DATUM GDA 94, PROJECTION MGA Zone 55

PROJECT: 18113718
DATE: 27 FEB 2019
DRAWN: TPC
CHECKED: IMK



Information contained on this drawing is the copyright of Golder Associates Pty. Ltd. Unauthorised use or reproduction of this plan either wholly or in part without written permission infringes copyright. © Golder Associates Pty. Ltd.

CoM Property ID: 101915

7 Chetwynd Street WEST MELBOURNE VIC 3003



LEGEND

 Parcel Boundary



Action Plan

EAO Recommendation

Do Not Apply EAO

EAO Comment

Site has not identified as being potentially contaminated in accordance with the Potentially Contaminated Land General Practice Note (DSE, 2005)

Resources used to make decision



Site Use Summary

Current Land Use
Residential

Historic Land Use
Residential

Key Information Supporting EAO Decision

Research indicates this site has currently and previously been used for residential purposes.



Additional Considerations

Resources used to make decision

Site inspection, Historical aerial photographs (1968/9 & 1987)

WEST MELBOURNE EAO - AMENDMENT C309 -
WEST MELBOURNE STRUCTURE PLAN:
PRELIMINARY LAND CONTAMINATION ASSESSMENT

CITY OF MELBOURNE

GIS ID: 7661

COPYRIGHT

Aerial Imagery copyright
City of Melbourne

0 3 6 12 18 24 30 metres

SCALE (at A4) (BUILDING MAP) 1:600
DATUM GDA 94, PROJECTION MGA Zone 55

PROJECT: 18113718
DATE: 27 FEB 2019
DRAWN: TPC
CHECKED: IMK



Information contained on this drawing is the copyright of Golder Associates Pty. Ltd. Unauthorised use or reproduction of this plan either wholly or in part without written permission infringes copyright. © Golder Associates Pty. Ltd.

CoM Property ID: 101916

9 Chetwynd Street WEST MELBOURNE VIC 3003



LEGEND

 Parcel Boundary

Action Plan

EAO Recommendation

Do Not Apply EAO

EAO Comment

Site has not identified as being potentially contaminated in accordance with the Potentially Contaminated Land General Practice Note (DSE, 2005)

Site Use Summary

Current Land Use
Residential

Historic Land Use
Residential

Key Information Supporting EAO Decision

Research indicates this site has currently and previously been used for residential purposes.

Additional Considerations

Resources used to make decision



Resources used to make decision

Site inspection, Historical aerial photographs (1968/9 & 1987)

WEST MELBOURNE EAO - AMENDMENT C309 -
WEST MELBOURNE STRUCTURE PLAN:
PRELIMINARY LAND CONTAMINATION ASSESSMENT

CITY OF MELBOURNE

GIS ID: 7662

COPYRIGHT

Aerial Imagery copyright
City of Melbourne

0 3.5 7 14 21 28 35 metres

SCALE (at A4) (BUILDING MAP) 1:700
DATUM GDA 94, PROJECTION MGA Zone 55

PROJECT: 18113718
DATE: 27 FEB 2019
DRAWN: TPC
CHECKED: IMK



Information contained on this drawing is the copyright of Golder Associates Pty. Ltd. Unauthorised use or reproduction of this plan either wholly or in part without written permission infringes copyright. © Golder Associates Pty. Ltd.

CoM Property ID: 101918

21 Chetwynd Street WEST MELBOURNE VIC 3003



LEGEND

 Parcel Boundary



Action Plan

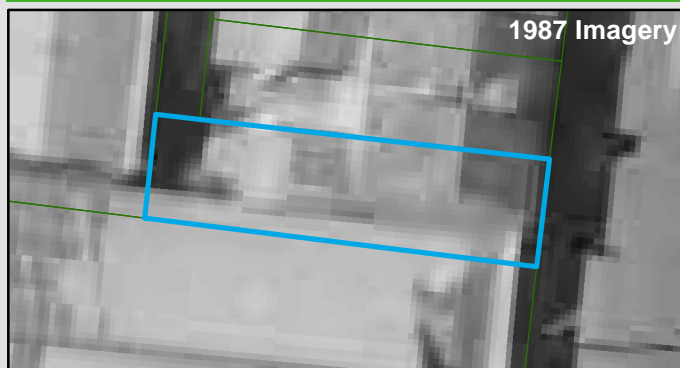
EAO Recommendation

Do Not Apply EAO

EAO Comment

Site has not identified as being potentially contaminated in accordance with the Potentially Contaminated Land General Practice Note (DSE, 2005)

Resources used to make decision



Site Use Summary

Current Land Use
Residential

Historic Land Use
Residential



Key Information Supporting EAO Decision

Research indicates this site has currently and previously been used for residential purposes.

Additional Considerations

Resources used to make decision

Site inspection, Historical aerial photographs (1968/9 & 1987)

WEST MELBOURNE EAO - AMENDMENT C309 -
WEST MELBOURNE STRUCTURE PLAN:
PRELIMINARY LAND CONTAMINATION ASSESSMENT

CITY OF MELBOURNE

GIS ID: 7664

COPYRIGHT

Aerial Imagery copyright
City of Melbourne

0 2 4 8 12 16 20 metres

SCALE (at A4) (BUILDING MAP) 1:400
DATUM GDA 94, PROJECTION MGA Zone 55

PROJECT: 18113718
DATE: 27 FEB 2019
DRAWN: TPC
CHECKED: IMK



Information contained on this drawing is the copyright of Golder Associates Pty. Ltd. Unauthorised use or reproduction of this plan either wholly or in part without written permission infringes copyright. © Golder Associates Pty. Ltd.

CoM Property ID: 101919

23 Chetwynd Street WEST MELBOURNE VIC 3003



LEGEND

 Parcel Boundary

Action Plan

EAO Recommendation

Do Not Apply EAO

EAO Comment

Site has not identified as being potentially contaminated in accordance with the Potentially Contaminated Land General Practice Note (DSE, 2005)

Site Use Summary

Current Land Use
Residential

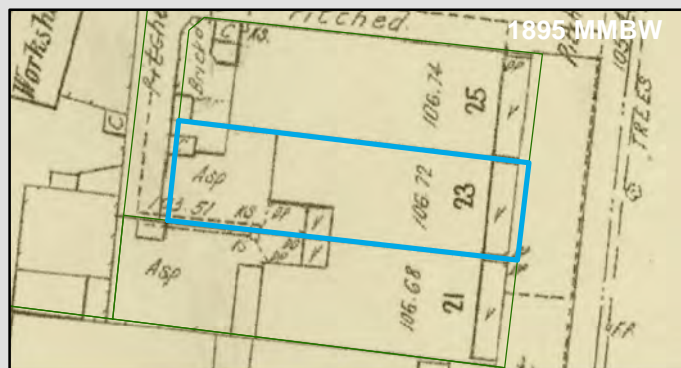
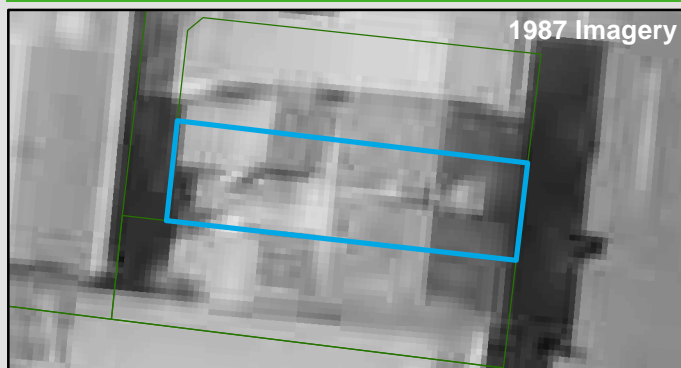
Historic Land Use
Residential

Key Information Supporting EAO Decision

Research indicates this site has currently and previously been used for residential purposes.

Additional Considerations

Resources used to make decision



Resources used to make decision

Site inspection, Historical aerial photographs (1968/9 & 1987)

WEST MELBOURNE EAO - AMENDMENT C309 -
WEST MELBOURNE STRUCTURE PLAN:
PRELIMINARY LAND CONTAMINATION ASSESSMENT

CITY OF MELBOURNE

GIS ID: 7665

COPYRIGHT

Aerial Imagery copyright
City of Melbourne

0 2 4 8 12 16 20 metres

SCALE (at A4) (BUILDING MAP) 1:400
DATUM GDA 94, PROJECTION MGA Zone 55

PROJECT: 18113718
DATE: 27 FEB 2019
DRAWN: TPC
CHECKED: IMK



Information contained on this drawing is the copyright of Golder Associates Pty. Ltd. Unauthorised use or reproduction of this plan either wholly or in part without written permission infringes copyright. © Golder Associates Pty. Ltd.

CoM Property ID: 101920

25 Chetwynd Street WEST MELBOURNE VIC 3003



LEGEND

 Parcel Boundary



Action Plan

EAO Recommendation

Do Not Apply EAO

EAO Comment

Site has not identified as being potentially contaminated in accordance with the Potentially Contaminated Land General Practice Note (DSE, 2005)

Site Use Summary

Current Land Use
Residential

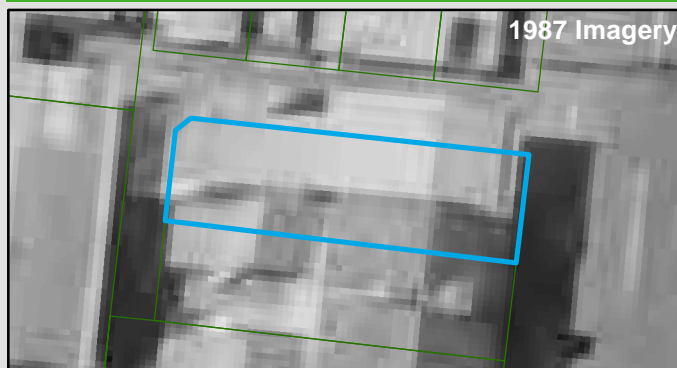
Historic Land Use
Residential

Key Information Supporting EAO Decision

Research indicates this site has currently and previously been used for residential purposes.

Additional Considerations

Resources used to make decision



Resources used to make decision

Site inspection, Historical aerial photographs (1968/9 & 1987)

WEST MELBOURNE EAO - AMENDMENT C309 -
WEST MELBOURNE STRUCTURE PLAN:
PRELIMINARY LAND CONTAMINATION ASSESSMENT

CITY OF MELBOURNE

GIS ID: 7666

COPYRIGHT

Aerial Imagery copyright
City of Melbourne

0 2 4 8 12 16 20 metres

SCALE (at A4) (BUILDING MAP) 1:400
DATUM GDA 94, PROJECTION MGA Zone 55

PROJECT: 18113718
DATE: 27 FEB 2019
DRAWN: TPC
CHECKED: IMK



Information contained on this drawing is the copyright of Golder Associates Pty. Ltd. Unauthorised use or reproduction of this plan either wholly or in part without written permission infringes copyright. © Golder Associates Pty. Ltd.

CoM Property ID: 101961

66 Chetwynd Street WEST MELBOURNE VIC 3003



LEGEND

 Parcel Boundary

Action Plan

EAO Recommendation

Do Not Apply EAO

EAO Comment

Site has not identified as being potentially contaminated in accordance with the Potentially Contaminated Land General Practice Note (DSE, 2005)

Site Use Summary

Current Land Use
Residential

Historic Land Use
Residential

Key Information Supporting EAO Decision

Research indicates this site has currently and previously been used for residential purposes.

Additional Considerations

Resources used to make decision



Resources used to make decision

Site inspection, Historical aerial photographs (1968/9 & 1987)

WEST MELBOURNE EAO - AMENDMENT C309 -
WEST MELBOURNE STRUCTURE PLAN:
PRELIMINARY LAND CONTAMINATION ASSESSMENT

CITY OF MELBOURNE

GIS ID: 7667

COPYRIGHT

Aerial Imagery copyright
City of Melbourne

0 5 10 20 30 40 50 metres

SCALE (at A4) (BUILDING MAP) 1:1,000
DATUM GDA 94, PROJECTION MGA Zone 55

PROJECT: 18113718
DATE: 27 FEB 2019
DRAWN: TPC
CHECKED: IMK



Information contained on this drawing is the copyright of Golder Associates Pty. Ltd. Unauthorised use or reproduction of this plan either wholly or in part without written permission infringes copyright. © Golder Associates Pty. Ltd.

CoM Property ID: 101962

64 Chetwynd Street WEST MELBOURNE VIC 3003



LEGEND

 Parcel Boundary

Action Plan

EAO Recommendation

Do Not Apply EAO

EAO Comment

Site has not identified as being potentially contaminated in accordance with the Potentially Contaminated Land General Practice Note (DSE, 2005)

Site Use Summary

Current Land Use
Residential

Historic Land Use
Residential

Key Information Supporting EAO Decision

Research indicates this site has currently and previously been used for residential purposes.

Additional Considerations

Resources used to make decision



Resources used to make decision

Site inspection, Historical aerial photographs (1968/9 & 1987)

WEST MELBOURNE EAO - AMENDMENT C309 -
WEST MELBOURNE STRUCTURE PLAN:
PRELIMINARY LAND CONTAMINATION ASSESSMENT

CITY OF MELBOURNE

GIS ID: 7668

COPYRIGHT

Aerial Imagery copyright
City of Melbourne

0 5 10 20 30 40 50 metres

SCALE (at A4) (BUILDING MAP) 1:1,100
DATUM GDA 94, PROJECTION MGA Zone 55

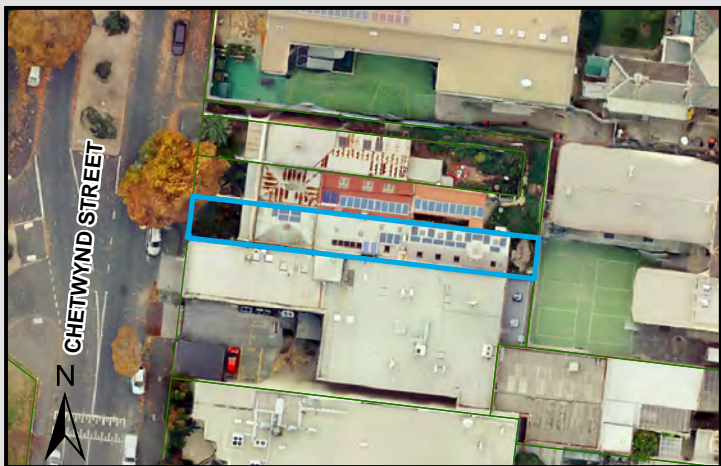
PROJECT: 18113718
DATE: 27 FEB 2019
DRAWN: TPC
CHECKED: IMK



Information contained on this drawing is the copyright of Golder Associates Pty. Ltd. Unauthorised use or reproduction of this plan either wholly or in part without written permission infringes copyright. © Golder Associates Pty. Ltd.

CoM Property ID: 101963

62 Chetwynd Street WEST MELBOURNE VIC 3003



LEGEND

 Parcel Boundary

Action Plan

EAO Recommendation

Do Not Apply EAO

EAO Comment

Site has not identified as being potentially contaminated in accordance with the Potentially Contaminated Land General Practice Note (DSE, 2005)

Site Use Summary

Current Land Use
Residential

Historic Land Use
Residential

Key Information Supporting EAO Decision

Research indicates this site has currently and previously been used for residential purposes.

Additional Considerations

Resources used to make decision



Resources used to make decision

Site inspection, Historical aerial photographs (1968/9 & 1987)

WEST MELBOURNE EAO - AMENDMENT C309 -
WEST MELBOURNE STRUCTURE PLAN:
PRELIMINARY LAND CONTAMINATION ASSESSMENT

CITY OF MELBOURNE

GIS ID: 7669

COPYRIGHT

Aerial Imagery copyright
City of Melbourne

0 5 10 20 30 40 50 metres

SCALE (at A4) (BUILDING MAP) 1:1,100
DATUM GDA 94, PROJECTION MGA Zone 55


PROJECT: 18113718
DATE: 27 FEB 2019
DRAWN: TPC
CHECKED: IMK



Information contained on this drawing is the copyright of Golder Associates Pty. Ltd. Unauthorised use or reproduction of this plan either wholly or in part without written permission infringes copyright. © Golder Associates Pty. Ltd.



LEGEND

 Parcel Boundary



Action Plan

EAO Recommendation

Do Not Apply EAO

EAO Comment

Site has not identified as being potentially contaminated in accordance with the Potentially Contaminated Land General Practice Note (DSE, 2005)

Site Use Summary

Current Land Use
Commercial

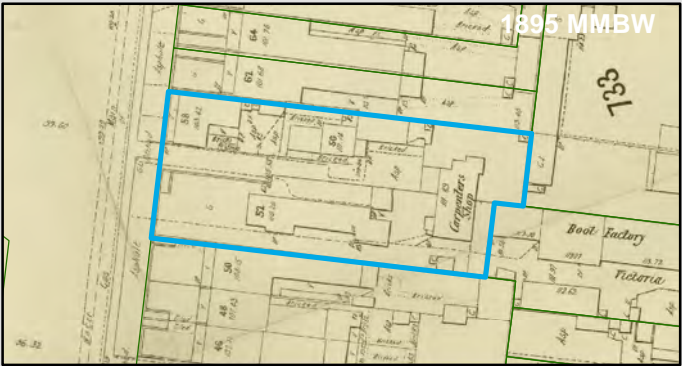
Historic Land Use
Other (unsure)

Key Information Supporting EAO Decision

No current or previous potentially contaminating land uses identified on site.

Additional Considerations

Resources used to make decision



Resources used to make decision

Site inspection, Historical aerial photographs (1968/9 & 1987)

WEST MELBOURNE EAO - AMENDMENT C309 -
WEST MELBOURNE STRUCTURE PLAN:
PRELIMINARY LAND CONTAMINATION ASSESSMENT

CITY OF MELBOURNE

GIS ID: 7670

COPYRIGHT
Aerial Imagery copyright
City of Melbourne

0 5 10 20 30 40 50 metres
SCALE (at A4) (BUILDING MAP) 1:1,100
DATUM GDA 94, PROJECTION MGA Zone 55
PROJECT: 18113718
DATE: 27 FEB 2019
DRAWN: TPC
CHECKED: IMK



Information contained on this drawing is the copyright of Golder Associates Pty. Ltd. Unauthorised use or reproduction of this plan either wholly or in part without written permission infringes copyright. © Golder Associates Pty. Ltd.

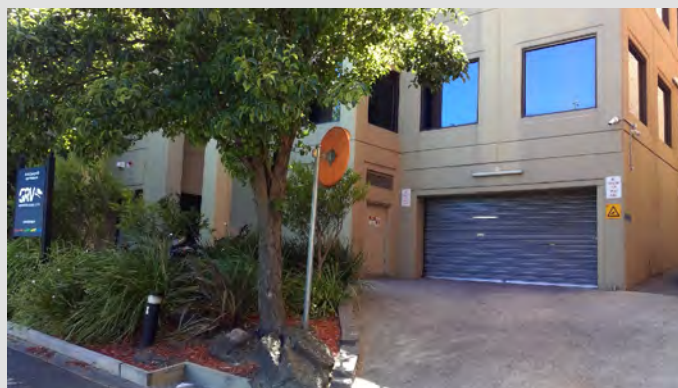
CoM Property ID: 101965

46-50 Chetwynd Street WEST MELBOURNE VIC 3003



LEGEND

 Parcel Boundary



Action Plan

EAO Recommendation

Do Not Apply EAO

EAO Comment

Site has not identified as being potentially contaminated in accordance with the Potentially Contaminated Land General Practice Note (DSE, 2005)

Resources used to make decision



Site Use Summary

Current Land Use
Commercial

Historic Land Use
Commercial



Key Information Supporting EAO Decision

No current or previous potentially contaminating land uses identified on site.

Resources used to make decision

West Melbourne Heritage Review Appendix 2 (May 2016), Site inspection, Historical aerial photographs (1968/9 & 1987)

Additional Considerations

WEST MELBOURNE EAO - AMENDMENT C309 -
WEST MELBOURNE STRUCTURE PLAN:
PRELIMINARY LAND CONTAMINATION ASSESSMENT

CITY OF MELBOURNE

GIS ID: 7671

COPYRIGHT

Aerial Imagery copyright
City of Melbourne

0 5 10 20 30 40 50 metres

SCALE (at A4) (BUILDING MAP) 1:1,100
DATUM GDA 94, PROJECTION MGA Zone 55

PROJECT: 18113718
DATE: 27 FEB 2019
DRAWN: TPC
CHECKED: IMK



Information contained on this drawing is the copyright of Golder Associates Pty. Ltd. Unauthorised use or reproduction of this plan either wholly or in part without written permission infringes copyright. © Golder Associates Pty. Ltd.

CoM Property ID: 101967

24-28 Chetwynd Street WEST MELBOURNE VIC 3003



LEGEND

 Parcel Boundary



Action Plan

EAO Recommendation

Do Not Apply EAO

EAO Comment

Site has not identified as being potentially contaminated in accordance with the Potentially Contaminated Land General Practice Note (DSE, 2005)

Site Use Summary

Current Land Use
Other (unsure)

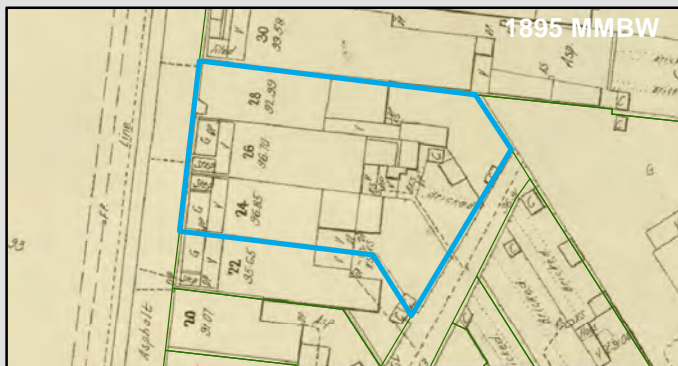
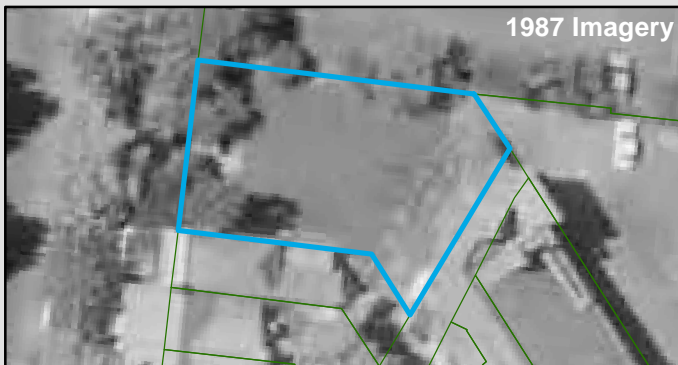
Historic Land Use
Residential

Key Information Supporting EAO Decision

No current or previous potentially contaminating land uses identified on site.

Additional Considerations

Resources used to make decision



Resources used to make decision

Site inspection, Historical aerial photographs (1968/9 & 1987)

WEST MELBOURNE EAO - AMENDMENT C309 -
WEST MELBOURNE STRUCTURE PLAN:
PRELIMINARY LAND CONTAMINATION ASSESSMENT

CITY OF MELBOURNE

GIS ID: 7673

COPYRIGHT

Aerial Imagery copyright
City of Melbourne

0 3.5 7 14 21 28 35 metres

SCALE (at A4) (BUILDING MAP) 1:700
DATUM GDA 94, PROJECTION MGA Zone 55

PROJECT: 18113718
DATE: 27 FEB 2019
DRAWN: TPC
CHECKED: IMK



Information contained on this drawing is the copyright of Golder Associates Pty. Ltd. Unauthorised use or reproduction of this plan either wholly or in part without written permission infringes copyright. © Golder Associates Pty. Ltd.

CoM Property ID: 101968

22 Chetwynd Street WEST MELBOURNE VIC 3003



LEGEND

 Parcel Boundary

Action Plan

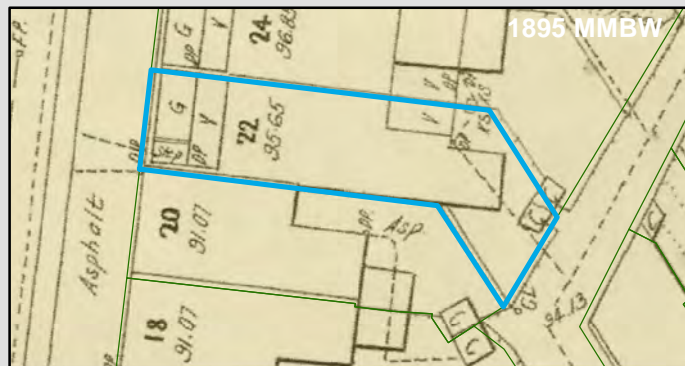
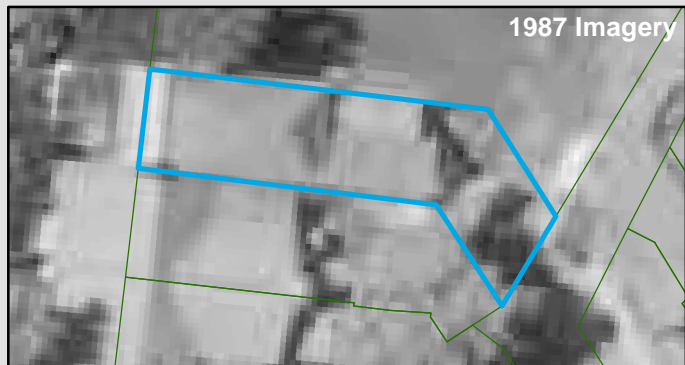
EAO Recommendation

Do Not Apply EAO

EAO Comment

Site has not identified as being potentially contaminated in accordance with the Potentially Contaminated Land General Practice Note (DSE, 2005)

Resources used to make decision



Site Use Summary

Current Land Use
Residential

Historic Land Use
Residential

Key Information Supporting EAO Decision

Research indicates this site has currently and previously been used for residential purposes.

Additional Considerations

Resources used to make decision

Site inspection, Historical aerial photographs (1968/9 & 1987)

WEST MELBOURNE EAO - AMENDMENT C309 -
WEST MELBOURNE STRUCTURE PLAN:
PRELIMINARY LAND CONTAMINATION ASSESSMENT

CITY OF MELBOURNE

GIS ID: 7674

COPYRIGHT

Aerial Imagery copyright
City of Melbourne

0 2 4 8 12 16 20 metres

SCALE (at A4) (BUILDING MAP) 1:400
DATUM GDA 94, PROJECTION MGA Zone 55


PROJECT: 18113718
DATE: 27 FEB 2019
DRAWN: TPC
CHECKED: IMK



Information contained on this drawing is the copyright of Golder Associates Pty. Ltd. Unauthorised use or reproduction of this plan either wholly or in part without written permission infringes copyright. © Golder Associates Pty. Ltd.



LEGEND

 Parcel Boundary



Action Plan

EAO Recommendation

Do Not Apply EAO

EAO Comment

Site has not identified as being potentially contaminated in accordance with the Potentially Contaminated Land General Practice Note (DSE, 2005)

Site Use Summary

Current Land Use
Residential

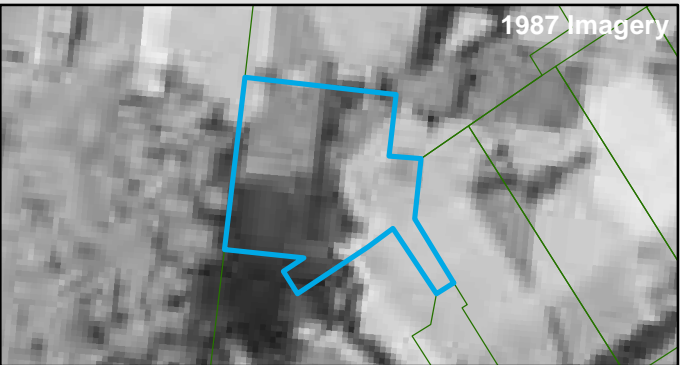
Historic Land Use
Residential

Key Information Supporting EAO Decision

Research indicates this site has currently and previously been used for residential purposes.

Additional Considerations

Resources used to make decision



Resources used to make decision
Site inspection, Historical aerial photographs (1968/9 & 1987)

WEST MELBOURNE EAO - AMENDMENT C309 -
WEST MELBOURNE STRUCTURE PLAN:
PRELIMINARY LAND CONTAMINATION ASSESSMENT

CITY OF MELBOURNE

GIS ID: 7675

COPYRIGHT
Aerial Imagery copyright
City of Melbourne

0 2 4 8 12 16 20 metres
SCALE (at A4) (BUILDING MAP) 1:400
DATUM GDA 94, PROJECTION MGA Zone 55
PROJECT: 18113718
DATE: 27 FEB 2019
DRAWN: TPC
CHECKED: IMK



Information contained on this drawing is the copyright of Golder Associates Pty. Ltd. Unauthorised use or reproduction of this plan either wholly or in part without written permission infringes copyright. © Golder Associates Pty. Ltd.

CoM Property ID: 102327

1 Curzon Street WEST MELBOURNE VIC 3003



LEGEND

 Parcel Boundary

Action Plan

EAO Recommendation

Do Not Apply EAO

EAO Comment

Site has not identified as being potentially contaminated in accordance with the Potentially Contaminated Land General Practice Note (DSE, 2005)

Site Use Summary

Current Land Use
Residential

Historic Land Use
Residential

Key Information Supporting EAO Decision

Research indicates this site has currently and previously been used for residential purposes.

Additional Considerations

UBD street directory places a potential former motor garage at the site. However 1895 plans and 1969 aerials indicate current residential building onsite.

Resources used to make decision



Resources used to make decision

Site inspection, Historical aerial photographs (1968/9 & 1987), Publically available Melbourne Street Directories (Yellow Pages 1990, Urban Business Directory 1975/6 & 1984)

WEST MELBOURNE EAO - AMENDMENT C309 -
WEST MELBOURNE STRUCTURE PLAN:
PRELIMINARY LAND CONTAMINATION ASSESSMENT

CITY OF MELBOURNE

GIS ID: 8549

COPYRIGHT

Aerial Imagery copyright
City of Melbourne

0 2 4 8 12 16 20 metres

SCALE (at A4) (BUILDING MAP) 1:400
DATUM GDA 94, PROJECTION MGA Zone 55

PROJECT: 18113718
DATE: 27 FEB 2019
DRAWN: TPC
CHECKED: IMK



Information contained on this drawing is the copyright of Golder Associates Pty. Ltd. Unauthorised use or reproduction of this plan either wholly or in part without written permission infringes copyright. © Golder Associates Pty. Ltd.

CoM Property ID: 102328

3 Curzon Street WEST MELBOURNE VIC 3003



LEGEND

 Parcel Boundary

Action Plan

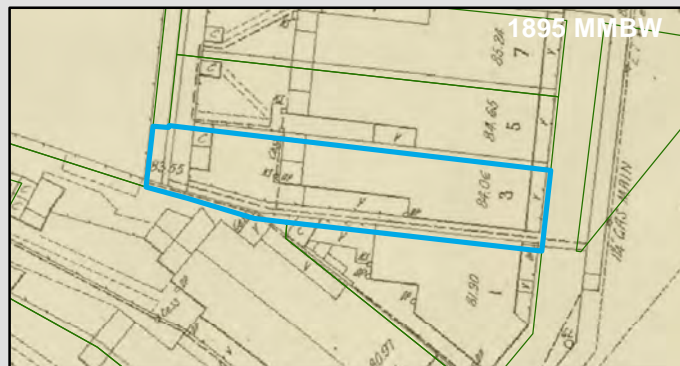
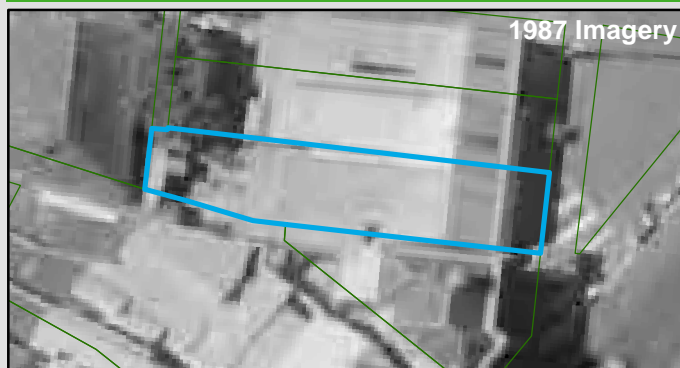
EAO Recommendation

Do Not Apply EAO

EAO Comment

Site has not identified as being potentially contaminated in accordance with the Potentially Contaminated Land General Practice Note (DSE, 2005)

Resources used to make decision



Site Use Summary

Current Land Use
Residential

Historic Land Use
Residential

Key Information Supporting EAO Decision

Research indicates this site has currently and previously been used for residential purposes.

Additional Considerations

Resources used to make decision

Site inspection, Historical aerial photographs (1968/9 & 1987)

WEST MELBOURNE EAO - AMENDMENT C309 -
WEST MELBOURNE STRUCTURE PLAN:
PRELIMINARY LAND CONTAMINATION ASSESSMENT

CITY OF MELBOURNE

GIS ID: 8550

COPYRIGHT

Aerial Imagery copyright
City of Melbourne

0 3 6 12 18 24 30 metres

SCALE (at A4) (BUILDING MAP) 1:600
DATUM GDA 94, PROJECTION MGA Zone 55

PROJECT: 18113718
DATE: 27 FEB 2019
DRAWN: TPC
CHECKED: IMK



Information contained on this drawing is the copyright of Golder Associates Pty. Ltd. Unauthorised use or reproduction of this plan either wholly or in part without written permission infringes copyright. © Golder Associates Pty. Ltd.



LEGEND

Parcel Boundary

Action Plan

EAO Recommendation

Do Not Apply EAO

EAO Comment

Site has not identified as being potentially contaminated in accordance with the Potentially Contaminated Land General Practice Note (DSE, 2005)

Site Use Summary

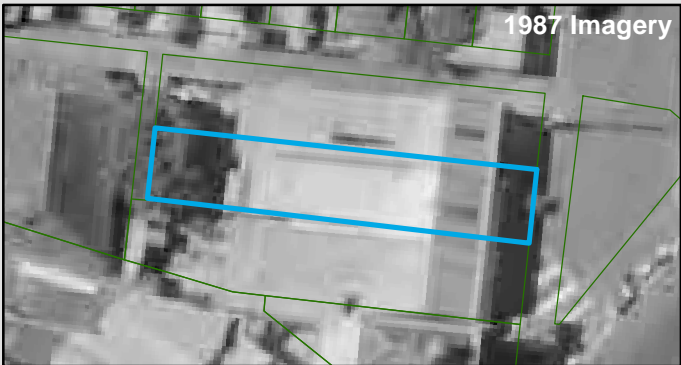
Current Land Use	Historic Land Use
Residential	Residential

Key Information Supporting EAO Decision

Research indicates this site has currently and previously been used for residential purposes.

Additional Considerations

Resources used to make decision



Resources used to make decision

Site inspection, Historical aerial photographs (1968/9 & 1987)

WEST MELBOURNE EAO - AMENDMENT C309 -
WEST MELBOURNE STRUCTURE PLAN:
PRELIMINARY LAND CONTAMINATION ASSESSMENT

CITY OF MELBOURNE

GIS ID: 8551

COPYRIGHT

Aerial Imagery copyright
City of Melbourne

0 3 6 12 18 24 30 metres

SCALE (at A4) (BUILDING MAP) 1:600
DATUM GDA 94, PROJECTION MGA Zone 55


PROJECT: 18113718
DATE: 27 FEB 2019
DRAWN: TPC
CHECKED: IMK



Information contained on this drawing is the copyright of Golder Associates Pty. Ltd. Unauthorised use or reproduction of this plan either wholly or in part without written permission infringes copyright. © Golder Associates Pty. Ltd.



LEGEND

 Parcel Boundary



Action Plan

EAO Recommendation

Do Not Apply EAO

EAO Comment

Site has not identified as being potentially contaminated in accordance with the Potentially Contaminated Land General Practice Note (DSE, 2005)

Site Use Summary

Current Land Use
Residential

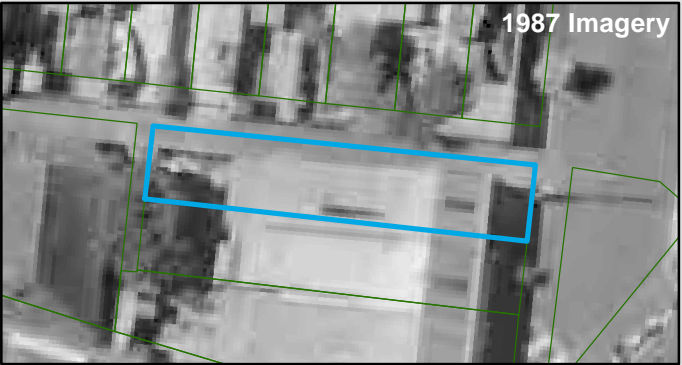
Historic Land Use
Residential

Key Information Supporting EAO Decision

Research indicates this site has currently and previously been used for residential purposes.

Additional Considerations

Resources used to make decision



Resources used to make decision

Site inspection, Historical aerial photographs (1968/9 & 1987)

WEST MELBOURNE EAO - AMENDMENT C309 -
WEST MELBOURNE STRUCTURE PLAN:
PRELIMINARY LAND CONTAMINATION ASSESSMENT

CITY OF MELBOURNE

GIS ID: 8552

COPYRIGHT
Aerial Imagery copyright
City of Melbourne

0 3 6 12 18 24 30 metres
SCALE (at A4) (BUILDING MAP) 1:600
DATUM GDA 94, PROJECTION MGA Zone 55
PROJECT: 18113718
DATE: 27 FEB 2019
DRAWN: TPC
CHECKED: IMK



CoM Property ID: 102331

15 Curzon Street WEST MELBOURNE VIC 3003



LEGEND

 Parcel Boundary



Action Plan

EAO Recommendation

Do Not Apply EAO

EAO Comment

Site has not identified as being potentially contaminated in accordance with the Potentially Contaminated Land General Practice Note (DSE, 2005)

Resources used to make decision



Site Use Summary

Current Land Use
Residential

Historic Land Use
Residential



Key Information Supporting EAO Decision

Research indicates this site has currently and previously been used for residential purposes.

Additional Considerations

Resources used to make decision

Site inspection, Historical aerial photographs (1968/9 & 1987)

WEST MELBOURNE EAO - AMENDMENT C309 -
WEST MELBOURNE STRUCTURE PLAN:
PRELIMINARY LAND CONTAMINATION ASSESSMENT

CITY OF MELBOURNE

GIS ID: 8553

COPYRIGHT

Aerial Imagery copyright
City of Melbourne

0 3 6 12 18 24 30 metres

SCALE (at A4) (BUILDING MAP) 1:600
DATUM GDA 94, PROJECTION MGA Zone 55

PROJECT: 18113718
DATE: 27 FEB 2019
DRAWN: TPC
CHECKED: IMK



Information contained on this drawing is the copyright of Golder Associates Pty. Ltd. Unauthorised use or reproduction of this plan either wholly or in part without written permission infringes copyright. © Golder Associates Pty. Ltd.

CoM Property ID: 102332

17 Curzon Street WEST MELBOURNE VIC 3003



LEGEND

 Parcel Boundary



Action Plan

EAO Recommendation

Do Not Apply EAO

EAO Comment

Site has not identified as being potentially contaminated in accordance with the Potentially Contaminated Land General Practice Note (DSE, 2005)

Resources used to make decision



Site Use Summary

Current Land Use
Residential

Historic Land Use
Residential



Key Information Supporting EAO Decision

Research indicates this site has currently and previously been used for residential purposes.

Additional Considerations

Resources used to make decision

Site inspection, Historical aerial photographs (1968/9 & 1987)

WEST MELBOURNE EAO - AMENDMENT C309 -
WEST MELBOURNE STRUCTURE PLAN:
PRELIMINARY LAND CONTAMINATION ASSESSMENT

CITY OF MELBOURNE

GIS ID: 8554

COPYRIGHT

Aerial Imagery copyright
City of Melbourne

0 3 6 12 18 24 30 metres

SCALE (at A4) (BUILDING MAP) 1:600
DATUM GDA 94, PROJECTION MGA Zone 55

PROJECT: 18113718
DATE: 27 FEB 2019
DRAWN: TPC
CHECKED: IMK



Information contained on this drawing is the copyright of Golder Associates Pty. Ltd. Unauthorised use or reproduction of this plan either wholly or in part without written permission infringes copyright. © Golder Associates Pty. Ltd.

CoM Property ID: 102333

19 Curzon Street WEST MELBOURNE VIC 3003



LEGEND

 Parcel Boundary



Action Plan

EAO Recommendation

Do Not Apply EAO

EAO Comment

Site has not identified as being potentially contaminated in accordance with the Potentially Contaminated Land General Practice Note (DSE, 2005)

Resources used to make decision



Site Use Summary

Current Land Use
Residential

Historic Land Use
Residential



Key Information Supporting EAO Decision

Research indicates this site has currently and previously been used for residential purposes.

Additional Considerations

Resources used to make decision

Site inspection, Historical aerial photographs (1968/9 & 1987)

WEST MELBOURNE EAO - AMENDMENT C309 -
WEST MELBOURNE STRUCTURE PLAN:
PRELIMINARY LAND CONTAMINATION ASSESSMENT

CITY OF MELBOURNE

GIS ID: 8555

COPYRIGHT

Aerial Imagery copyright
City of Melbourne

0 3 6 12 18 24 30 metres

SCALE (at A4) (BUILDING MAP) 1:600
DATUM GDA 94, PROJECTION MGA Zone 55

PROJECT: 18113718
DATE: 27 FEB 2019
DRAWN: TPC
CHECKED: IMK



CoM Property ID: 102334

21 Curzon Street WEST MELBOURNE VIC 3003



LEGEND

 Parcel Boundary



Action Plan

EAO Recommendation

Do Not Apply EAO

EAO Comment

Site has not identified as being potentially contaminated in accordance with the Potentially Contaminated Land General Practice Note (DSE, 2005)

Resources used to make decision



Site Use Summary

Current Land Use
Residential

Historic Land Use
Residential



Key Information Supporting EAO Decision

Research indicates this site has currently and previously been used for residential purposes.

Additional Considerations

Resources used to make decision

Site inspection, Historical aerial photographs (1968/9 & 1987)

WEST MELBOURNE EAO - AMENDMENT C309 -
WEST MELBOURNE STRUCTURE PLAN:
PRELIMINARY LAND CONTAMINATION ASSESSMENT

CITY OF MELBOURNE

GIS ID: 8556

COPYRIGHT

Aerial Imagery copyright
City of Melbourne

0 3 6 12 18 24 30 metres

SCALE (at A4) (BUILDING MAP) 1:600
DATUM GDA 94, PROJECTION MGA Zone 55

PROJECT: 18113718
DATE: 27 FEB 2019
DRAWN: TPC
CHECKED: IMK



Information contained on this drawing is the copyright of Golder Associates Pty. Ltd. Unauthorised use or reproduction of this plan either wholly or in part without written permission infringes copyright. © Golder Associates Pty. Ltd.

CoM Property ID: 102335

23 Curzon Street WEST MELBOURNE VIC 3003



LEGEND

 Parcel Boundary



Action Plan

EAO Recommendation

Do Not Apply EAO

EAO Comment

Site has not identified as being potentially contaminated in accordance with the Potentially Contaminated Land General Practice Note (DSE, 2005)

Resources used to make decision



Site Use Summary

Current Land Use
Residential

Historic Land Use
Residential



Key Information Supporting EAO Decision

Research indicates this site has currently and previously been used for residential purposes.

Additional Considerations

Resources used to make decision

Site inspection, Historical aerial photographs (1968/9 & 1987)

WEST MELBOURNE EAO - AMENDMENT C309 -
WEST MELBOURNE STRUCTURE PLAN:
PRELIMINARY LAND CONTAMINATION ASSESSMENT

CITY OF MELBOURNE

GIS ID: 8557

COPYRIGHT

Aerial Imagery copyright
City of Melbourne

0 3 6 12 18 24 30 metres

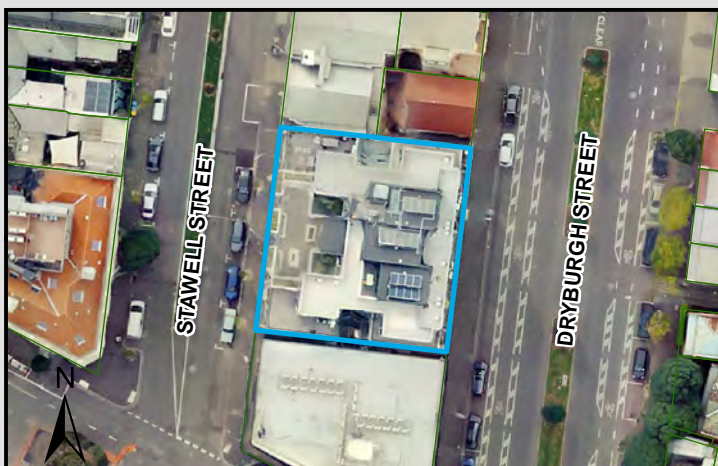
SCALE (at A4) (BUILDING MAP) 1:600
DATUM GDA 94, PROJECTION MGA Zone 55

PROJECT: 18113718
DATE: 27 FEB 2019
DRAWN: TPC
CHECKED: IMK



CoM Property ID: 102784

35-43 Dryburgh Street WEST MELBOURNE VIC 3003



LEGEND

 Parcel Boundary

Action Plan

EAO Recommendation

Do Not Apply EAO

EAO Comment

Site has not identified as being potentially contaminated in accordance with the Potentially Contaminated Land General Practice Note (DSE, 2005)

Site Use Summary

Current Land Use
Residential

Historic Land Use
Commercial

Key Information Supporting EAO Decision

No current or previous potentially contaminating land uses identified on site.

Additional Considerations

Previously a single story concrete office building.

Resources used to make decision



Resources used to make decision

West Melbourne Heritage Review Appendix 2 (May 2016), Site inspection, Historical aerial photographs (1968/9 & 1987)

WEST MELBOURNE EAO - AMENDMENT C309 -
WEST MELBOURNE STRUCTURE PLAN:
PRELIMINARY LAND CONTAMINATION ASSESSMENT

CITY OF MELBOURNE

GIS ID: 14303

COPYRIGHT

Aerial Imagery copyright
City of Melbourne

0 5 10 20 30 40 50 metres

SCALE (at A4) (BUILDING MAP) 1:1,000
DATUM GDA 94, PROJECTION MGA Zone 55

PROJECT: 18113718
DATE: 27 FEB 2019
DRAWN: TPC
CHECKED: IMK



Information contained on this drawing is the copyright of Golder Associates Pty. Ltd. Unauthorised use or reproduction of this plan either wholly or in part without written permission infringes copyright. © Golder Associates Pty. Ltd.

CoM Property ID: 102785

45-47 Dryburgh Street WEST MELBOURNE VIC 3003



LEGEND

 Parcel Boundary



Action Plan

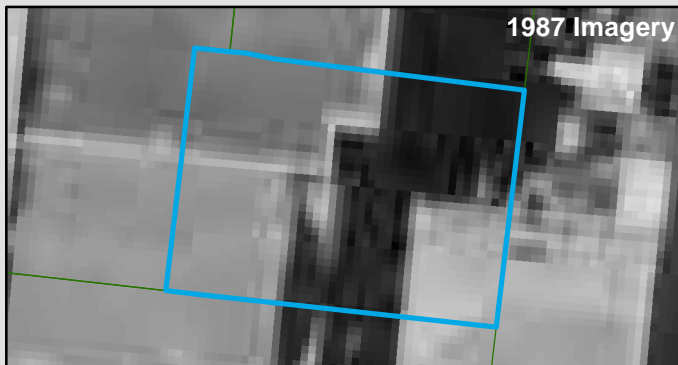
EAO Recommendation

Do Not Apply EAO

EAO Comment

Site has not identified as being potentially contaminated in accordance with the Potentially Contaminated Land General Practice Note (DSE, 2005)

Resources used to make decision



1987 Imagery

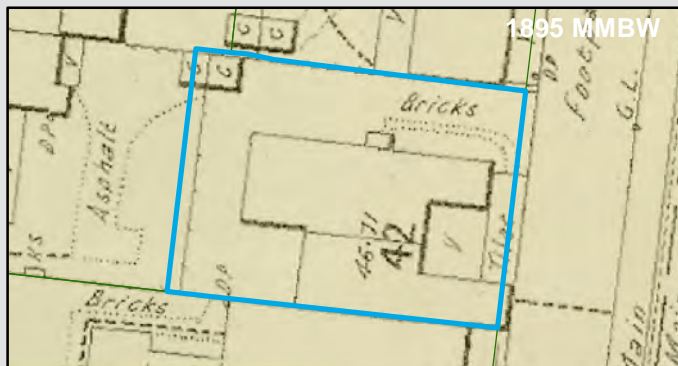
Site Use Summary

Current Land Use
Residential

Historic Land Use
Residential

Key Information Supporting EAO Decision

Research indicates this site has currently and previously been used for residential purposes.



1895 MMBW

Additional Considerations

Resources used to make decision

West Melbourne Heritage Review Appendix 2 (May 2016), Site inspection, Historical aerial photographs (1968/9 & 1987)

WEST MELBOURNE EAO - AMENDMENT C309 -
WEST MELBOURNE STRUCTURE PLAN:
PRELIMINARY LAND CONTAMINATION ASSESSMENT

CITY OF MELBOURNE

GIS ID: 14304

COPYRIGHT

Aerial Imagery copyright
City of Melbourne

0 1.5 3 6 9 12 15 metres

SCALE (at A4) (BUILDING MAP) 1:300
DATUM GDA 94, PROJECTION MGA Zone 55

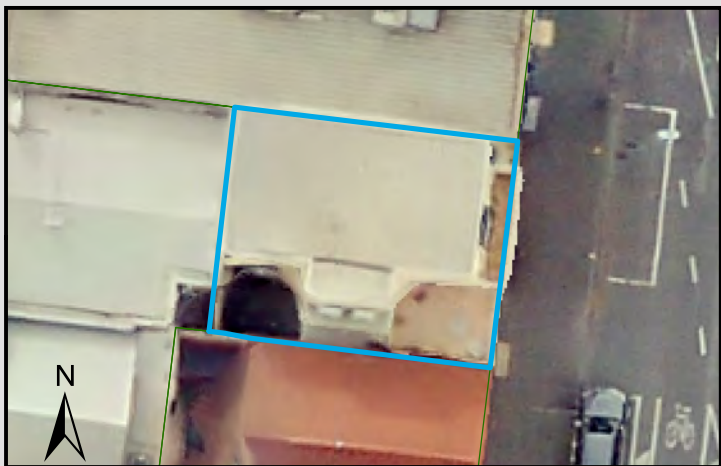
PROJECT: 18113718
DATE: 27 FEB 2019
DRAWN: TPC
CHECKED: IMK



Information contained on this drawing is the copyright of Golder Associates Pty. Ltd. Unauthorised use or reproduction of this plan either wholly or in part without written permission infringes copyright. © Golder Associates Pty. Ltd.

CoM Property ID: 102786

49-51 Dryburgh Street WEST MELBOURNE VIC 3003



LEGEND

 Parcel Boundary



Action Plan

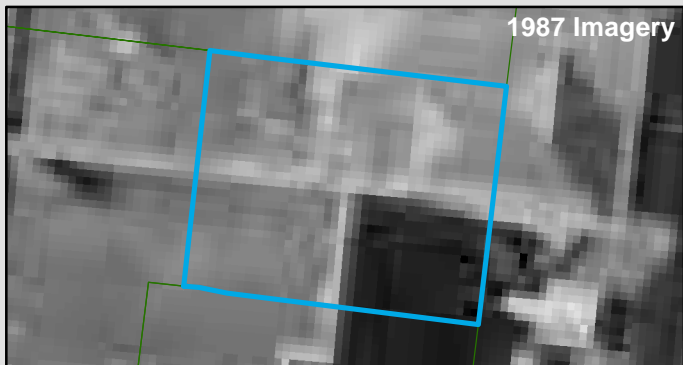
EAO Recommendation

Do Not Apply EAO

EAO Comment

Site has not identified as being potentially contaminated in accordance with the Potentially Contaminated Land General Practice Note (DSE, 2005)

Resources used to make decision



1987 Imagery

Site Use Summary

Current Land Use
Residential

Historic Land Use
Residential



1895 MMBW

Key Information Supporting EAO Decision

Research indicates this site has currently and previously been used for residential purposes.

Additional Considerations

Resources used to make decision

West Melbourne Heritage Review Appendix 2 (May 2016), Site inspection, Historical aerial photographs (1968/9 & 1987)

WEST MELBOURNE EAO - AMENDMENT C309 -
WEST MELBOURNE STRUCTURE PLAN:
PRELIMINARY LAND CONTAMINATION ASSESSMENT

CITY OF MELBOURNE

GIS ID: 14305

COPYRIGHT

Aerial Imagery copyright
City of Melbourne

0 1.5 3 6 9 12 15 metres

SCALE (at A4) (BUILDING MAP) 1:300
DATUM GDA 94, PROJECTION MGA Zone 55

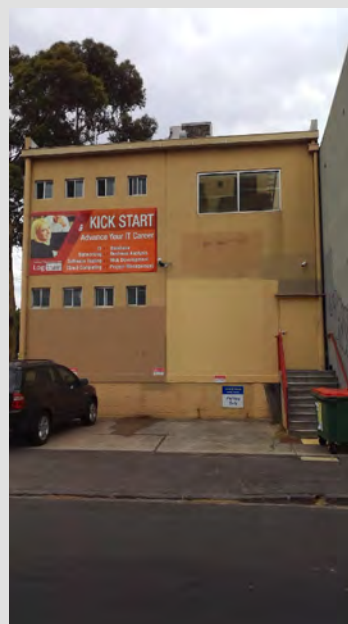
PROJECT: 18113718
DATE: 27 FEB 2019
DRAWN: TPC
CHECKED: IMK



Information contained on this drawing is the copyright of Golder Associates Pty. Ltd. Unauthorised use or reproduction of this plan either wholly or in part without written permission infringes copyright. © Golder Associates Pty. Ltd.

CoM Property ID: 102787

53-55 Dryburgh Street WEST MELBOURNE VIC 3003



LEGEND

 Parcel Boundary

Action Plan

EAO Recommendation

Do Not Apply EAO

EAO Comment

Site has not identified as being potentially contaminated in accordance with the Potentially Contaminated Land General Practice Note (DSE, 2005)

Site Use Summary

Current Land Use
Commercial

Historic Land Use
Residential

Key Information Supporting EAO Decision

No current or previous potentially contaminating land uses identified on site.

Additional Considerations

Current brick building built in 1990.

Resources used to make decision



Resources used to make decision

West Melbourne Heritage Review Appendix 2 (May 2016), Site inspection, Historical aerial photographs (1968/9 & 1987)

WEST MELBOURNE EAO - AMENDMENT C309 -
WEST MELBOURNE STRUCTURE PLAN:
PRELIMINARY LAND CONTAMINATION ASSESSMENT

CITY OF MELBOURNE

GIS ID: 14306

COPYRIGHT

Aerial Imagery copyright
City of Melbourne

0 3 6 12 18 24 30 metres

SCALE (at A4) (BUILDING MAP) 1:600
DATUM GDA 94, PROJECTION MGA Zone 55

PROJECT: 18113718
DATE: 27 FEB 2019
DRAWN: TPC
CHECKED: IMK



Information contained on this drawing is the copyright of Golder Associates Pty. Ltd. Unauthorised use or reproduction of this plan either wholly or in part without written permission infringes copyright. © Golder Associates Pty. Ltd.

CoM Property ID: 102935

50 Dryburgh Street WEST MELBOURNE VIC 3003



LEGEND

 Parcel Boundary

Action Plan

EAO Recommendation

Do Not Apply EAO

EAO Comment

Site has not identified as being potentially contaminated in accordance with the Potentially Contaminated Land General Practice Note (DSE, 2005)

Resources used to make decision



Site Use Summary

Current Land Use
Residential

Historic Land Use
Residential

Key Information Supporting EAO Decision

Research indicates this site has currently and previously been used for residential purposes.

Additional Considerations

Resources used to make decision

Site inspection, Historical aerial photographs (1968/9 & 1987)

WEST MELBOURNE EAO - AMENDMENT C309 -
WEST MELBOURNE STRUCTURE PLAN:
PRELIMINARY LAND CONTAMINATION ASSESSMENT

CITY OF MELBOURNE

GIS ID: 8528

COPYRIGHT

Aerial Imagery copyright
City of Melbourne

0 3 6 12 18 24 30 metres

SCALE (at A4) (BUILDING MAP) 1:600
DATUM GDA 94, PROJECTION MGA Zone 55

PROJECT: 18113718
DATE: 27 FEB 2019
DRAWN: TPC
CHECKED: IMK




Information contained on this drawing is the copyright of Golder Associates Pty. Ltd. Unauthorised use or reproduction of this plan either wholly or in part without written permission infringes copyright. © Golder Associates Pty. Ltd.

CoM Property ID: 102936

48 Dryburgh Street WEST MELBOURNE VIC 3003



LEGEND

 Parcel Boundary

Action Plan

EAO Recommendation

Do Not Apply EAO

EAO Comment

Site has not identified as being potentially contaminated in accordance with the Potentially Contaminated Land General Practice Note (DSE, 2005)

Site Use Summary

Current Land Use
Residential

Historic Land Use
Residential

Key Information Supporting EAO Decision

Research indicates this site has currently and previously been used for residential purposes.

Additional Considerations

Resources used to make decision



Resources used to make decision

Site inspection, Historical aerial photographs (1968/9 & 1987)

WEST MELBOURNE EAO - AMENDMENT C309 -
WEST MELBOURNE STRUCTURE PLAN:
PRELIMINARY LAND CONTAMINATION ASSESSMENT

CITY OF MELBOURNE

GIS ID: 8529

COPYRIGHT

Aerial Imagery copyright
City of Melbourne

0 3 6 12 18 24 30 metres

SCALE (at A4) (BUILDING MAP) 1:600
DATUM GDA 94, PROJECTION MGA Zone 55


PROJECT: 18113718
DATE: 27 FEB 2019
DRAWN: TPC
CHECKED: IMK



Information contained on this drawing is the copyright of Golder Associates Pty. Ltd. Unauthorised use or reproduction of this plan either wholly or in part without written permission infringes copyright. © Golder Associates Pty. Ltd.



LEGEND

 Parcel Boundary



Action Plan

EAO Recommendation

Do Not Apply EAO

EAO Comment

Site has not identified as being potentially contaminated in accordance with the Potentially Contaminated Land General Practice Note (DSE, 2005)

Site Use Summary

Current Land Use
Residential

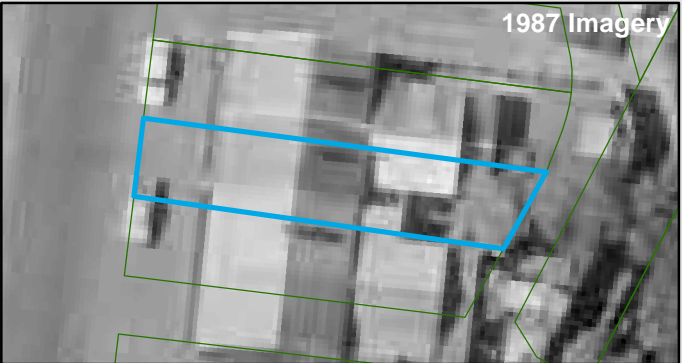
Historic Land Use
Residential

Key Information Supporting EAO Decision

Research indicates this site has currently and previously been used for residential purposes.

Additional Considerations

Resources used to make decision



Resources used to make decision
Site inspection, Historical aerial photographs (1968/9 & 1987)

WEST MELBOURNE EAO - AMENDMENT C309 -
WEST MELBOURNE STRUCTURE PLAN:
PRELIMINARY LAND CONTAMINATION ASSESSMENT

CITY OF MELBOURNE

GIS ID: 8530

COPYRIGHT
Aerial Imagery copyright
City of Melbourne

0 2.5 5 10 15 20 25 metres
SCALE (at A4) (BUILDING MAP) 1:500
DATUM GDA 94, PROJECTION MGA Zone 55
PROJECT: 18113718
DATE: 27 FEB 2019
DRAWN: TPC
CHECKED: IMK



Information contained on this drawing is the copyright of Golder Associates Pty. Ltd. Unauthorised use or reproduction of this plan either wholly or in part without written permission infringes copyright. © Golder Associates Pty. Ltd.

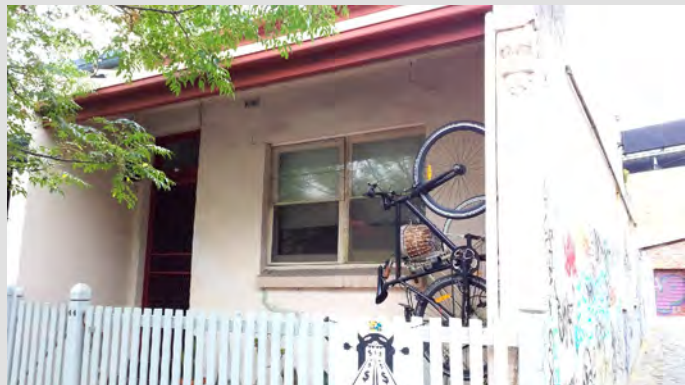
CoM Property ID: 102938

44 Dryburgh Street WEST MELBOURNE VIC 3003



LEGEND

 Parcel Boundary



Action Plan

EAO Recommendation

Do Not Apply EAO

EAO Comment

Site has not identified as being potentially contaminated in accordance with the Potentially Contaminated Land General Practice Note (DSE, 2005)

Resources used to make decision



Site Use Summary

Current Land Use
Residential

Historic Land Use
Residential

Key Information Supporting EAO Decision

Research indicates this site has currently and previously been used for residential purposes.

Additional Considerations

Resources used to make decision

Site inspection, Historical aerial photographs (1968/9 & 1987)

WEST MELBOURNE EAO - AMENDMENT C309 -
WEST MELBOURNE STRUCTURE PLAN:
PRELIMINARY LAND CONTAMINATION ASSESSMENT

CITY OF MELBOURNE

GIS ID: 8531

COPYRIGHT

Aerial Imagery copyright
City of Melbourne

0 2.5 5 10 15 20 25 metres

SCALE (at A4) (BUILDING MAP) 1:500
DATUM GDA 94, PROJECTION MGA Zone 55

PROJECT: 18113718
DATE: 27 FEB 2019
DRAWN: TPC
CHECKED: IMK



CoM Property ID: 102939

40 Dryburgh Street WEST MELBOURNE VIC 3003



LEGEND

 Parcel Boundary



Action Plan

EAO Recommendation

Do Not Apply EAO

EAO Comment

Site has not identified as being potentially contaminated in accordance with the Potentially Contaminated Land General Practice Note (DSE, 2005)

Site Use Summary

Current Land Use
Residential

Historic Land Use
Residential

Key Information Supporting EAO Decision

Research indicates this site has currently and previously been used for residential purposes.

Additional Considerations

Resources used to make decision



Resources used to make decision

Site inspection, Historical aerial photographs (1968/9 & 1987)

WEST MELBOURNE EAO - AMENDMENT C309 -
WEST MELBOURNE STRUCTURE PLAN:
PRELIMINARY LAND CONTAMINATION ASSESSMENT

CITY OF MELBOURNE

GIS ID: 8532

COPYRIGHT

Aerial Imagery copyright
City of Melbourne

0 4 8 16 24 32 40 metres

SCALE (at A4) (BUILDING MAP) 1:800
DATUM GDA 94, PROJECTION MGA Zone 55

PROJECT: 18113718
DATE: 27 FEB 2019
DRAWN: TPC
CHECKED: IMK



CoM Property ID: 102940

38 Dryburgh Street WEST MELBOURNE VIC 3003



LEGEND

 Parcel Boundary



Action Plan

EAO Recommendation

Do Not Apply EAO

EAO Comment

Site has not identified as being potentially contaminated in accordance with the Potentially Contaminated Land General Practice Note (DSE, 2005)

Site Use Summary

Current Land Use
Residential

Historic Land Use
Residential

Key Information Supporting EAO Decision

Research indicates this site has currently and previously been used for residential purposes.

Additional Considerations

Resources used to make decision



Resources used to make decision

Site inspection, Historical aerial photographs (1968/9 & 1987)

WEST MELBOURNE EAO - AMENDMENT C309 -
WEST MELBOURNE STRUCTURE PLAN:
PRELIMINARY LAND CONTAMINATION ASSESSMENT

CITY OF MELBOURNE

GIS ID: 8533

COPYRIGHT

Aerial Imagery copyright
City of Melbourne

0 4 8 16 24 32 40 metres

SCALE (at A4) (BUILDING MAP) 1:800
DATUM GDA 94, PROJECTION MGA Zone 55

PROJECT: 18113718
DATE: 27 FEB 2019
DRAWN: TPC
CHECKED: IMK



Information contained on this drawing is the copyright of Golder Associates Pty. Ltd. Unauthorised use or reproduction of this plan either wholly or in part without written permission infringes copyright. © Golder Associates Pty. Ltd.

CoM Property ID: 102941

Flagstaff Gardens Tennis Courts
311 William Street WEST MELBOURNE VIC 3003



LEGEND

 Parcel Boundary



Action Plan

EAO Recommendation

Do Not Apply EAO

EAO Comment

Site has not identified as being potentially contaminated in accordance with the Potentially Contaminated Land General Practice Note (DSE, 2005)

Resources used to make decision



Site Use Summary

Current Land Use

Public land (schools, hospitals, parks)

Historic Land Use

Public land (schools, hospitals, parks)

Key Information Supporting EAO Decision

No current or previous potentially contaminating land uses identified on site.

Additional Considerations

Resources used to make decision

Site inspection, Historical aerial photographs (1968/9 & 1987)

WEST MELBOURNE EAO - AMENDMENT C309 -
WEST MELBOURNE STRUCTURE PLAN:
PRELIMINARY LAND CONTAMINATION ASSESSMENT

CITY OF MELBOURNE

GIS ID: 14615

COPYRIGHT

Aerial Imagery copyright
City of Melbourne

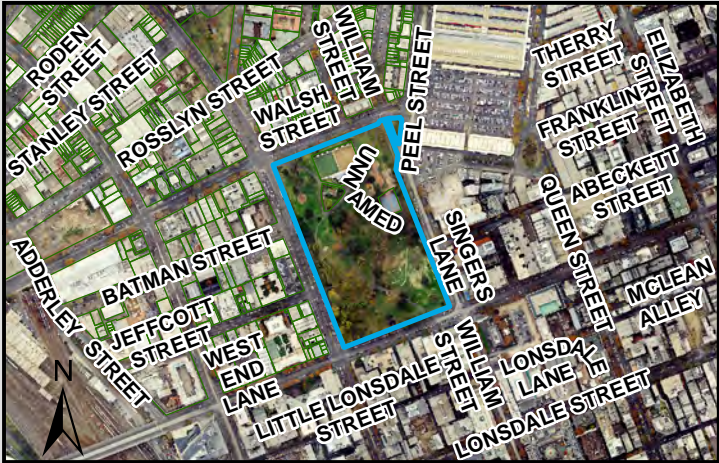
0 5 10 20 30 40 50 metres

SCALE (at A4) (BUILDING MAP) 1:1,700
DATUM GDA 94, PROJECTION MGA Zone 55

PROJECT: 18113718
DATE: 27 FEB 2019
DRAWN: TPC
CHECKED: IMK



Information contained on this drawing is the copyright of Golder Associates Pty. Ltd. Unauthorised use or reproduction of this plan either wholly or in part without written permission infringes copyright. © Golder Associates Pty. Ltd.



LEGEND

 Parcel Boundary



Action Plan

EAO Recommendation

Do Not Apply EAO

EAO Comment

Site has not identified as being potentially contaminated in accordance with the Potentially Contaminated Land General Practice Note (DSE, 2005)

Site Use Summary

Current Land Use

Public land (schools, hospitals, parks)

Historic Land Use

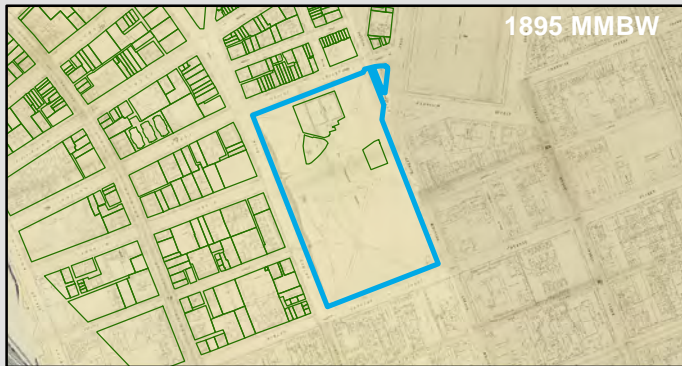
Public land (schools, hospitals, parks)

Key Information Supporting EAO Decision

No current or previous potentially contaminating land uses identified on site.

Additional Considerations

Resources used to make decision



Resources used to make decision

Site inspection, Historical aerial photographs (1968/9 & 1987)

WEST MELBOURNE EAO - AMENDMENT C309 -
WEST MELBOURNE STRUCTURE PLAN:
PRELIMINARY LAND CONTAMINATION ASSESSMENT

CITY OF MELBOURNE

GIS ID: 8338

COPYRIGHT

Aerial Imagery copyright
City of Melbourne

0 70 140 280 420 560 700 metres

SCALE (at A4) (BUILDING MAP) 1:13,600
DATUM GDA 94, PROJECTION MGA Zone 55

PROJECT: 18113718
DATE: 27 FEB 2019
DRAWN: TPC
CHECKED: IMK



Information contained on this drawing is the copyright of Golder Associates Pty. Ltd. Unauthorised use or reproduction of this plan either wholly or in part without written permission infringes copyright. © Golder Associates Pty. Ltd.

CoM Property ID: 102943

Flagstaff Lodge Flagstaff Gardens
309 William Street WEST MELBOURNE VIC 3003



LEGEND

 Parcel Boundary



Action Plan

EAO Recommendation

Do Not Apply EAO

EAO Comment

Site has not identified as being potentially contaminated in accordance with the Potentially Contaminated Land General Practice Note (DSE, 2005)

Resources used to make decision



Site Use Summary

Current Land Use

Public land (schools, hospitals, parks)

Historic Land Use

Public land (schools, hospitals, parks)



Key Information Supporting EAO Decision

No current or previous potentially contaminating land uses identified on site.

Additional Considerations

Resources used to make decision

Site inspection, Historical aerial photographs (1968/9 & 1987)

WEST MELBOURNE EAO - AMENDMENT C309 -
WEST MELBOURNE STRUCTURE PLAN:
PRELIMINARY LAND CONTAMINATION ASSESSMENT

CITY OF MELBOURNE

GIS ID: 14617

COPYRIGHT

Aerial Imagery copyright
City of Melbourne

0 5 10 20 30 40 50 metres

SCALE (at A4) (BUILDING MAP) 1:1,600
DATUM GDA 94, PROJECTION MGA Zone 55

PROJECT: 18113718
DATE: 27 FEB 2019
DRAWN: TPC
CHECKED: IMK



CoM Property ID: 102945

City of Melbourne Bowls Club Inc.
Flagstaff Gardens 3 Dudley Street WEST MELBOURNE VIC 3003



LEGEND

 Parcel Boundary



Action Plan

EAO Recommendation

Do Not Apply EAO

EAO Comment

Site has not identified as being potentially contaminated in accordance with the Potentially Contaminated Land General Practice Note (DSE, 2005)

Site Use Summary

Current Land Use

Public land (schools, hospitals, parks)

Historic Land Use

Public land (schools, hospitals, parks)

Key Information Supporting EAO Decision

No current or previous potentially contaminating land uses identified on site.

Additional Considerations

Resources used to make decision



Resources used to make decision

Site inspection, Historical aerial photographs (1968/9 & 1987)

WEST MELBOURNE EAO - AMENDMENT C309 -
WEST MELBOURNE STRUCTURE PLAN:
PRELIMINARY LAND CONTAMINATION ASSESSMENT

CITY OF MELBOURNE

GIS ID: 14616

COPYRIGHT

Aerial Imagery copyright
City of Melbourne

0 12.5 25 50 75 100 125 metres

SCALE (at A4) (BUILDING MAP) 1:2,700
DATUM GDA 94, PROJECTION MGA Zone 55

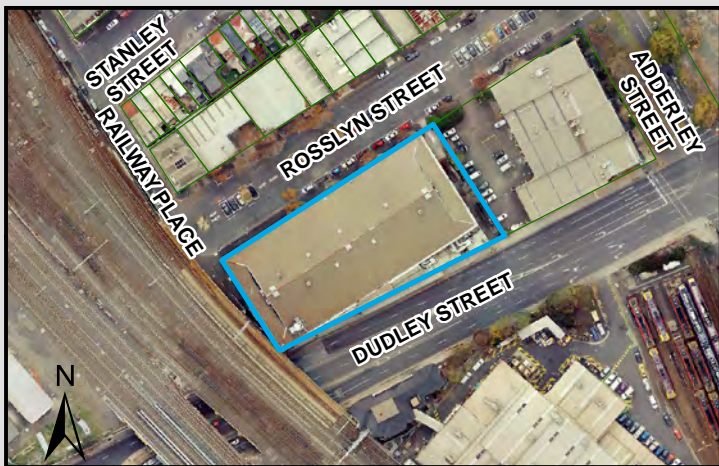
PROJECT: 18113718
DATE: 27 FEB 2019
DRAWN: TPC
CHECKED: IMK



Information contained on this drawing is the copyright of Golder Associates Pty. Ltd. Unauthorised use or reproduction of this plan either wholly or in part without written permission infringes copyright. © Golder Associates Pty. Ltd.

CoM Property ID: 102955

272-306 Dudley Street WEST MELBOURNE VIC 3003



LEGEND

 Parcel Boundary



Action Plan

EAO Recommendation

Do Not Apply EAO

EAO Comment

Site has not identified as being potentially contaminated in accordance with the Potentially Contaminated Land General Practice Note (DSE, 2005)

Resources used to make decision



Site Use Summary

Current Land Use
Commercial

Historic Land Use
Commercial

Key Information Supporting EAO Decision

No current or previous potentially contaminating land uses identified on site.

Additional Considerations

Resources used to make decision

West Melbourne Heritage Review Appendix 2 (May 2016), Site inspection, Historical aerial photographs (1968/9 & 1987), City of Melbourne interactive map (2019)

WEST MELBOURNE EAO - AMENDMENT C309 -
WEST MELBOURNE STRUCTURE PLAN:
PRELIMINARY LAND CONTAMINATION ASSESSMENT

CITY OF MELBOURNE

GIS ID: 6655

COPYRIGHT

Aerial Imagery copyright
City of Melbourne

0 12.5 25 50 75 100 125 metres

SCALE (at A4) (BUILDING MAP) 1:2,800
DATUM GDA 94, PROJECTION MGA Zone 55


PROJECT: 18113718
DATE: 27 FEB 2019
DRAWN: TPC
CHECKED: IMK



Information contained on this drawing is the copyright of Golder Associates Pty. Ltd. Unauthorised use or reproduction of this plan either wholly or in part without written permission infringes copyright. © Golder Associates Pty. Ltd.



LEGEND

 Parcel Boundary

Action Plan

EAO Recommendation

Do Not Apply EAO

EAO Comment

Site has not identified as being potentially contaminated in accordance with the Potentially Contaminated Land General Practice Note (DSE, 2005)

Site Use Summary

Current Land Use
Commercial

Historic Land Use
Commercial

Key Information Supporting EAO Decision

No current or previous potentially contaminating land uses identified on site.

Additional Considerations

Witches in Britches.

Resources used to make decision



Resources used to make decision

West Melbourne Heritage Review Appendix 2 (May 2016), Site inspection, Historical aerial photographs (1968/9 & 1987)

WEST MELBOURNE EAO - AMENDMENT C309 -
WEST MELBOURNE STRUCTURE PLAN:
PRELIMINARY LAND CONTAMINATION ASSESSMENT

CITY OF MELBOURNE

GIS ID: 7706

COPYRIGHT
Aerial Imagery copyright
City of Melbourne

0 5 10 20 30 40 50 metres
SCALE (at A4) (BUILDING MAP) 1:1,100
DATUM GDA 94, PROJECTION MGA Zone 55
PROJECT: 18113718
DATE: 27 FEB 2019
DRAWN: TPC
CHECKED: IMK



Information contained on this drawing is the copyright of Golder Associates Pty. Ltd. Unauthorised use or reproduction of this plan either wholly or in part without written permission infringes copyright. © Golder Associates Pty. Ltd.

CoM Property ID: 102963

76 Dudley Street WEST MELBOURNE VIC 3003



LEGEND

 Parcel Boundary

Action Plan

EAO Recommendation

Do Not Apply EAO

EAO Comment

Site has not identified as being potentially contaminated in accordance with the Potentially Contaminated Land General Practice Note (DSE, 2005)

Site Use Summary

Current Land Use
Residential

Historic Land Use
Residential

Key Information Supporting EAO Decision

Research indicates this site has currently and previously been used for residential purposes.

Additional Considerations

Resources used to make decision



Resources used to make decision

Site inspection, Historical aerial photographs (1968/9 & 1987)

WEST MELBOURNE EAO - AMENDMENT C309 -
WEST MELBOURNE STRUCTURE PLAN:
PRELIMINARY LAND CONTAMINATION ASSESSMENT

CITY OF MELBOURNE

GIS ID: 7707

COPYRIGHT

Aerial Imagery copyright
City of Melbourne

0 4.5 9 18 27 36 45 metres

SCALE (at A4) (BUILDING MAP) 1:900
DATUM GDA 94, PROJECTION MGA Zone 55

PROJECT: 18113718
DATE: 27 FEB 2019
DRAWN: TPC
CHECKED: IMK



Information contained on this drawing is the copyright of Golder Associates Pty. Ltd. Unauthorised use or reproduction of this plan either wholly or in part without written permission infringes copyright. © Golder Associates Pty. Ltd.

CoM Property ID: 102964

74 Dudley Street WEST MELBOURNE VIC 3003



LEGEND

 Parcel Boundary

Action Plan

EAO Recommendation

Do Not Apply EAO

EAO Comment

Site has not identified as being potentially contaminated in accordance with the Potentially Contaminated Land General Practice Note (DSE, 2005)

Resources used to make decision



Site Use Summary

Current Land Use
Residential

Historic Land Use
Residential

Key Information Supporting EAO Decision

Research indicates this site has currently and previously been used for residential purposes.

Additional Considerations

Resources used to make decision

Site inspection, Historical aerial photographs (1968/9 & 1987)

WEST MELBOURNE EAO - AMENDMENT C309 -
WEST MELBOURNE STRUCTURE PLAN:
PRELIMINARY LAND CONTAMINATION ASSESSMENT

CITY OF MELBOURNE

GIS ID: 7708

COPYRIGHT

Aerial Imagery copyright
City of Melbourne

0 4.5 9 18 27 36 45 metres

SCALE (at A4) (BUILDING MAP) 1:900
DATUM GDA 94, PROJECTION MGA Zone 55

PROJECT: 18113718
DATE: 27 FEB 2019
DRAWN: TPC
CHECKED: IMK



Information contained on this drawing is the copyright of Golder Associates Pty. Ltd. Unauthorised use or reproduction of this plan either wholly or in part without written permission infringes copyright. © Golder Associates Pty. Ltd.

CoM Property ID: 102965

72 Dudley Street WEST MELBOURNE VIC 3003



LEGEND

 Parcel Boundary

Action Plan

EAO Recommendation

Do Not Apply EAO

EAO Comment

Site has not identified as being potentially contaminated in accordance with the Potentially Contaminated Land General Practice Note (DSE, 2005)

Site Use Summary

Current Land Use
Residential

Historic Land Use
Residential

Key Information Supporting EAO Decision

Research indicates this site has currently and previously been used for residential purposes.

Additional Considerations

Resources used to make decision



Resources used to make decision

Site inspection, Historical aerial photographs (1968/9 & 1987)

WEST MELBOURNE EAO - AMENDMENT C309 -
WEST MELBOURNE STRUCTURE PLAN:
PRELIMINARY LAND CONTAMINATION ASSESSMENT

CITY OF MELBOURNE

GIS ID: 7709

COPYRIGHT

Aerial Imagery copyright
City of Melbourne

0 4 8 16 24 32 40 metres

SCALE (at A4) (BUILDING MAP) 1:800
DATUM GDA 94, PROJECTION MGA Zone 55


PROJECT: 18113718
DATE: 27 FEB 2019
DRAWN: TPC
CHECKED: IMK



Information contained on this drawing is the copyright of Golder Associates Pty. Ltd. Unauthorised use or reproduction of this plan either wholly or in part without written permission infringes copyright. © Golder Associates Pty. Ltd.



LEGEND

 Parcel Boundary

Action Plan

EAO Recommendation

Do Not Apply EAO

EAO Comment

Site has not identified as being potentially contaminated in accordance with the Potentially Contaminated Land General Practice Note (DSE, 2005)

Site Use Summary

Current Land Use
Residential

Historic Land Use
Residential

Key Information Supporting EAO Decision

Research indicates this site has currently and previously been used for residential purposes.

Additional Considerations

Resources used to make decision



Resources used to make decision

Site inspection, Historical aerial photographs (1968/9 & 1987)

WEST MELBOURNE EAO - AMENDMENT C309 -
WEST MELBOURNE STRUCTURE PLAN:
PRELIMINARY LAND CONTAMINATION ASSESSMENT

CITY OF MELBOURNE

GIS ID: 7710

COPYRIGHT

Aerial Imagery copyright
City of Melbourne

0 4 8 16 24 32 40 metres

SCALE (at A4) (BUILDING MAP) 1:800
DATUM GDA 94, PROJECTION MGA Zone 55

PROJECT: 18113718
DATE: 27 FEB 2019
DRAWN: TPC
CHECKED: IMK



Information contained on this drawing is the copyright of Golder Associates Pty. Ltd. Unauthorised use or reproduction of this plan either wholly or in part without written permission infringes copyright. © Golder Associates Pty. Ltd.

CoM Property ID: 102967

66-68 Dudley Street WEST MELBOURNE VIC 3003



LEGEND

 Parcel Boundary

Action Plan

EAO Recommendation

Do Not Apply EAO

EAO Comment

Site has not identified as being potentially contaminated in accordance with the Potentially Contaminated Land General Practice Note (DSE, 2005)

Site Use Summary

Current Land Use
Commercial

Historic Land Use
Commercial

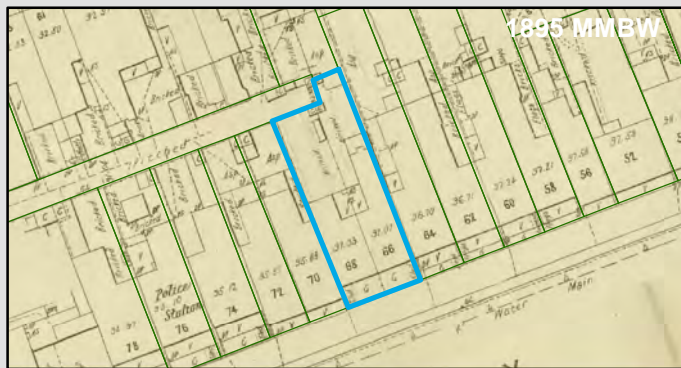
Key Information Supporting EAO Decision

No current or previous potentially contaminating land uses identified on site.

Additional Considerations

Brick office building built 1971.

Resources used to make decision



Resources used to make decision

West Melbourne Heritage Review Appendix 2 (May 2016), Site inspection, Historical aerial photographs (1968/9 & 1987)

WEST MELBOURNE EAO - AMENDMENT C309 -
WEST MELBOURNE STRUCTURE PLAN:
PRELIMINARY LAND CONTAMINATION ASSESSMENT

CITY OF MELBOURNE

GIS ID: 7711

COPYRIGHT

Aerial Imagery copyright
City of Melbourne

0 5 10 20 30 40 50 metres

SCALE (at A4) (BUILDING MAP) 1:1,000
DATUM GDA 94, PROJECTION MGA Zone 55

PROJECT: 18113718
DATE: 27 FEB 2019
DRAWN: TPC
CHECKED: IMK



CoM Property ID: 102968

64 Dudley Street WEST MELBOURNE VIC 3003



LEGEND

 Parcel Boundary



Action Plan

EAO Recommendation

Do Not Apply EAO

EAO Comment

Site has not identified as being potentially contaminated in accordance with the Potentially Contaminated Land General Practice Note (DSE, 2005)

Resources used to make decision



Site Use Summary

Current Land Use
Residential

Historic Land Use
Residential

Key Information Supporting EAO Decision

Research indicates this site has currently and previously been used for residential purposes.

Additional Considerations

Resources used to make decision

Site inspection, Historical aerial photographs (1968/9 & 1987)

WEST MELBOURNE EAO - AMENDMENT C309 -
WEST MELBOURNE STRUCTURE PLAN:
PRELIMINARY LAND CONTAMINATION ASSESSMENT

CITY OF MELBOURNE

GIS ID: 7712

COPYRIGHT

Aerial Imagery copyright
City of Melbourne

0 5 10 20 30 40 50 metres

SCALE (at A4) (BUILDING MAP) 1:1,200
DATUM GDA 94, PROJECTION MGA Zone 55

PROJECT: 18113718
DATE: 27 FEB 2019
DRAWN: TPC
CHECKED: IMK



Information contained on this drawing is the copyright of Golder Associates Pty. Ltd. Unauthorised use or reproduction of this plan either wholly or in part without written permission infringes copyright. © Golder Associates Pty. Ltd.

CoM Property ID: 102969

60 Dudley Street WEST MELBOURNE VIC 3003



LEGEND

 Parcel Boundary



Action Plan

EAO Recommendation

Do Not Apply EAO

EAO Comment

Site has not identified as being potentially contaminated in accordance with the Potentially Contaminated Land General Practice Note (DSE, 2005)

Site Use Summary

Current Land Use
Commercial

Historic Land Use
Commercial

Key Information Supporting EAO Decision

No current or previous potentially contaminating land uses identified on site.

Additional Considerations

Resources used to make decision



Resources used to make decision

West Melbourne Heritage Review Appendix 2 (May 2016), Site inspection, Historical aerial photographs (1968/9 & 1987)

WEST MELBOURNE EAO - AMENDMENT C309 -
WEST MELBOURNE STRUCTURE PLAN:
PRELIMINARY LAND CONTAMINATION ASSESSMENT

CITY OF MELBOURNE

GIS ID: 7713

COPYRIGHT

Aerial Imagery copyright
City of Melbourne

0 5 10 20 30 40 50 metres

SCALE (at A4) (BUILDING MAP) 1:1,100
DATUM GDA 94, PROJECTION MGA Zone 55

PROJECT: 18113718
DATE: 27 FEB 2019
DRAWN: TPC
CHECKED: IMK



CoM Property ID: 102970

58 Dudley Street WEST MELBOURNE VIC 3003



LEGEND

 Parcel Boundary

Action Plan

EAO Recommendation

Do Not Apply EAO

EAO Comment

Site has not identified as being potentially contaminated in accordance with the Potentially Contaminated Land General Practice Note (DSE, 2005)

Site Use Summary

Current Land Use
Commercial

Historic Land Use
Commercial

Key Information Supporting EAO Decision

No current or previous potentially contaminating land uses identified on site.

Additional Considerations

Resources used to make decision



Resources used to make decision

West Melbourne Heritage Review Appendix 2 (May 2016), Site inspection, Historical aerial photographs (1968/9 & 1987)

WEST MELBOURNE EAO - AMENDMENT C309 -
WEST MELBOURNE STRUCTURE PLAN:
PRELIMINARY LAND CONTAMINATION ASSESSMENT

CITY OF MELBOURNE

GIS ID: 7714

COPYRIGHT

Aerial Imagery copyright
City of Melbourne

0 5 10 20 30 40 50 metres

SCALE (at A4) (BUILDING MAP) 1:1,100
DATUM GDA 94, PROJECTION MGA Zone 55

PROJECT: 18113718
DATE: 27 FEB 2019
DRAWN: TPC
CHECKED: IMK



Information contained on this drawing is the copyright of Golder Associates Pty. Ltd. Unauthorised use or reproduction of this plan either wholly or in part without written permission infringes copyright. © Golder Associates Pty. Ltd.

CoM Property ID: 102971

56 Dudley Street WEST MELBOURNE VIC 3003



LEGEND

 Parcel Boundary

Action Plan

EAO Recommendation

Do Not Apply EAO

EAO Comment

Site has not identified as being potentially contaminated in accordance with the Potentially Contaminated Land General Practice Note (DSE, 2005)

Site Use Summary

Current Land Use
Commercial

Historic Land Use
Residential

Key Information Supporting EAO Decision

No current or previous potentially contaminating land uses identified on site.

Additional Considerations

Resources used to make decision



Resources used to make decision

West Melbourne Heritage Review Appendix 2 (May 2016), Site inspection, Historical aerial photographs (1968/9 & 1987)

WEST MELBOURNE EAO - AMENDMENT C309 -
WEST MELBOURNE STRUCTURE PLAN:
PRELIMINARY LAND CONTAMINATION ASSESSMENT

CITY OF MELBOURNE

GIS ID: 7715

COPYRIGHT

Aerial Imagery copyright
City of Melbourne

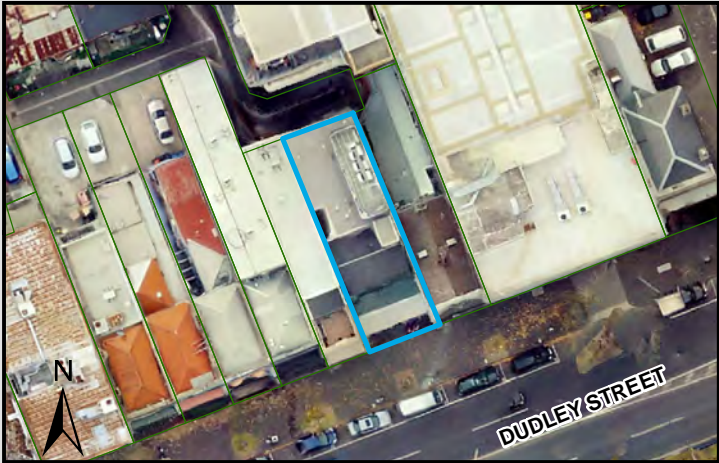
0 4 8 16 24 32 40 metres

SCALE (at A4) (BUILDING MAP) 1:800
DATUM GDA 94, PROJECTION MGA Zone 55


PROJECT: 18113718
DATE: 27 FEB 2019
DRAWN: TPC
CHECKED: IMK



Information contained on this drawing is the copyright of Golder Associates Pty. Ltd. Unauthorised use or reproduction of this plan either wholly or in part without written permission infringes copyright. © Golder Associates Pty. Ltd.



LEGEND

 Parcel Boundary

Action Plan

EAO Recommendation

Do Not Apply EAO

EAO Comment

Site has not identified as being potentially contaminated in accordance with the Potentially Contaminated Land General Practice Note (DSE, 2005)

Site Use Summary

Current Land Use

Commercial

Historic Land Use

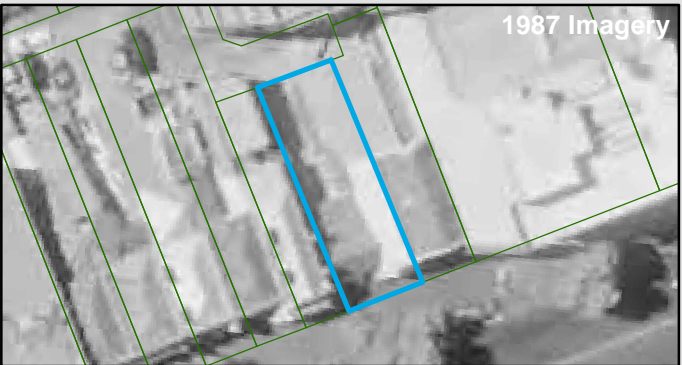
Residential

Key Information Supporting EAO Decision

No current or previous potentially contaminating land uses identified on site.

Additional Considerations

Resources used to make decision



Resources used to make decision

West Melbourne Heritage Review Appendix 2 (May 2016), Site inspection, Historical aerial photographs (1968/9 & 1987)

WEST MELBOURNE EAO - AMENDMENT C309 -
WEST MELBOURNE STRUCTURE PLAN:
PRELIMINARY LAND CONTAMINATION ASSESSMENT

CITY OF MELBOURNE

GIS ID: 7716

COPYRIGHT

Aerial Imagery copyright
City of Melbourne

0 4 8 16 24 32 40 metres

SCALE (at A4) (BUILDING MAP) 1:800
DATUM GDA 94, PROJECTION MGA Zone 55

PROJECT: 18113718
DATE: 27 FEB 2019
DRAWN: TPC
CHECKED: IMK



Information contained on this drawing is the copyright of Golder Associates Pty. Ltd. Unauthorised use or reproduction of this plan either wholly or in part without written permission infringes copyright. © Golder Associates Pty. Ltd.

CoM Property ID: 102973

50 Dudley Street WEST MELBOURNE VIC 3003



LEGEND

 Parcel Boundary



Action Plan

EAO Recommendation

Do Not Apply EAO

EAO Comment

Site has not identified as being potentially contaminated in accordance with the Potentially Contaminated Land General Practice Note (DSE, 2005)

Resources used to make decision



Site Use Summary

Current Land Use
Other (unsure)

Historic Land Use
Residential



Key Information Supporting EAO Decision

No current or previous potentially contaminating land uses identified on site.

Additional Considerations

Resources used to make decision

West Melbourne Heritage Review Appendix 2 (May 2016), Site inspection, Historical aerial photographs (1968/9 & 1987)

WEST MELBOURNE EAO - AMENDMENT C309 -
WEST MELBOURNE STRUCTURE PLAN:
PRELIMINARY LAND CONTAMINATION ASSESSMENT

CITY OF MELBOURNE

GIS ID: 7717

COPYRIGHT

Aerial Imagery copyright
City of Melbourne

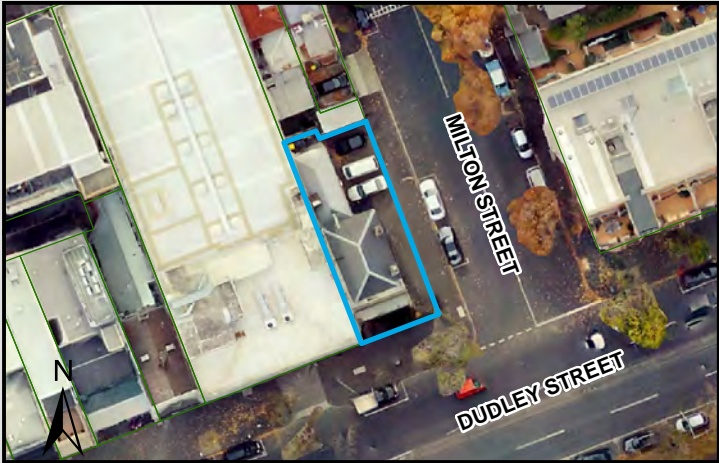
0 4.5 9 18 27 36 45 metres

SCALE (at A4) (BUILDING MAP) 1:900
DATUM GDA 94, PROJECTION MGA Zone 55


PROJECT: 18113718
DATE: 27 FEB 2019
DRAWN: TPC
CHECKED: IMK



Information contained on this drawing is the copyright of Golder Associates Pty. Ltd. Unauthorised use or reproduction of this plan either wholly or in part without written permission infringes copyright. © Golder Associates Pty. Ltd.



LEGEND

 Parcel Boundary

Action Plan

EAO Recommendation

Do Not Apply EAO

EAO Comment

Site has not identified as being potentially contaminated in accordance with the Potentially Contaminated Land General Practice Note (DSE, 2005)

Site Use Summary

Current Land Use
Commercial

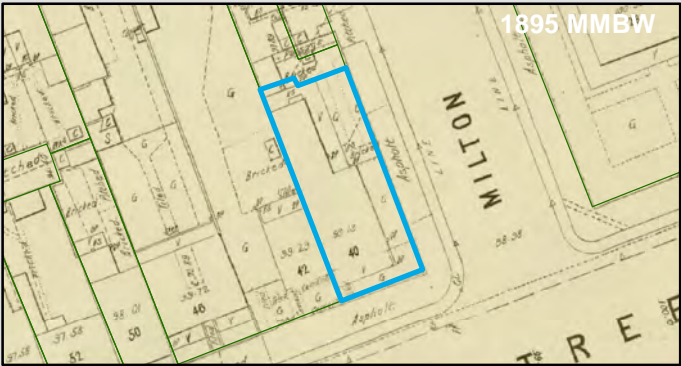
Historic Land Use
Commercial

Key Information Supporting EAO Decision

No current or previous potentially contaminating land uses identified on site.

Additional Considerations

Resources used to make decision



Resources used to make decision

Site inspection, Historical aerial photographs (1968/9 & 1987)

WEST MELBOURNE EAO - AMENDMENT C309 -
WEST MELBOURNE STRUCTURE PLAN:
PRELIMINARY LAND CONTAMINATION ASSESSMENT

CITY OF MELBOURNE

GIS ID: 7719

COPYRIGHT

Aerial Imagery copyright
City of Melbourne

0 4.5 9 18 27 36 45 metres

SCALE (at A4) (BUILDING MAP) 1:900
DATUM GDA 94, PROJECTION MGA Zone 55

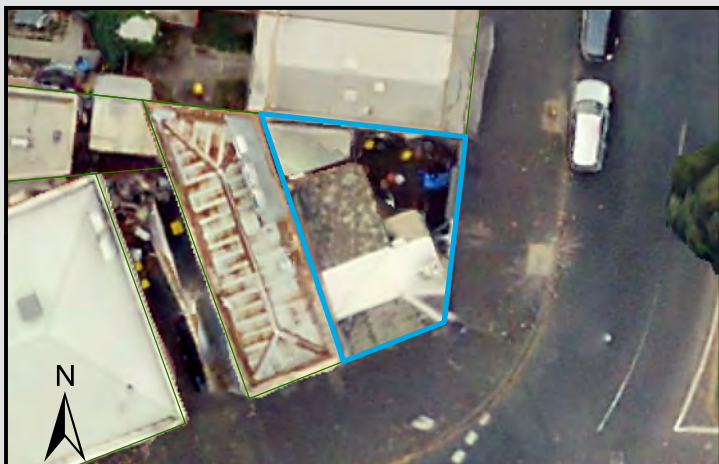
PROJECT: 18113718
DATE: 27 FEB 2019
DRAWN: TPC
CHECKED: IMK



Information contained on this drawing is the copyright of Golder Associates Pty. Ltd. Unauthorised use or reproduction of this plan either wholly or in part without written permission infringes copyright. © Golder Associates Pty. Ltd.

CoM Property ID: 102978

2 Dudley Street WEST MELBOURNE VIC 3003



LEGEND

 Parcel Boundary



Action Plan

EAO Recommendation

Do Not Apply EAO

EAO Comment

Site has not identified as being potentially contaminated in accordance with the Potentially Contaminated Land General Practice Note (DSE, 2005)

Resources used to make decision



1987 Imagery

Site Use Summary

Current Land Use
Residential

Historic Land Use
Residential



1895 MMBW

Key Information Supporting EAO Decision

Research indicates this site has currently and previously been used for residential purposes.

Additional Considerations

Resources used to make decision

Site inspection, Historical aerial photographs (1968/9 & 1987)

WEST MELBOURNE EAO - AMENDMENT C309 -
WEST MELBOURNE STRUCTURE PLAN:
PRELIMINARY LAND CONTAMINATION ASSESSMENT

CITY OF MELBOURNE

GIS ID: 7469

COPYRIGHT

Aerial Imagery copyright
City of Melbourne

0 2 4 8 12 16 20 metres

SCALE (at A4) (BUILDING MAP) 1:400
DATUM GDA 94, PROJECTION MGA Zone 55

PROJECT: 18113718
DATE: 27 FEB 2019
DRAWN: TPC
CHECKED: IMK



Information contained on this drawing is the copyright of Golder Associates Pty. Ltd. Unauthorised use or reproduction of this plan either wholly or in part without written permission infringes copyright. © Golder Associates Pty. Ltd.

CoM Property ID: 103015

38-40 Eades Place WEST MELBOURNE VIC 3003



LEGEND

 Parcel Boundary



Action Plan

EAO Recommendation

Do Not Apply EAO

EAO Comment

Site has not identified as being potentially contaminated in accordance with the Potentially Contaminated Land General Practice Note (DSE, 2005)

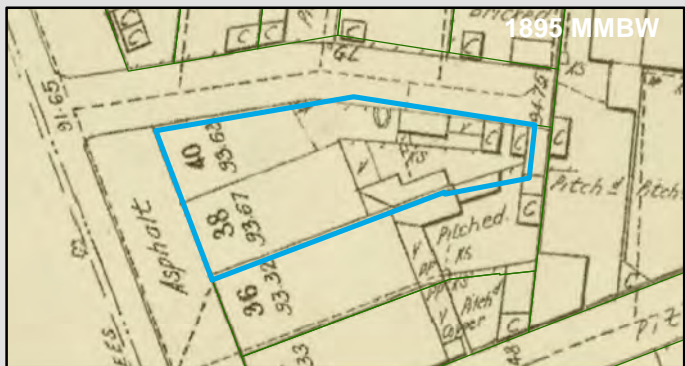
Resources used to make decision



Site Use Summary

Current Land Use
Residential

Historic Land Use
Residential



Key Information Supporting EAO Decision

Research indicates this site has currently and previously been used for residential purposes.

Additional Considerations

Resources used to make decision

Site inspection, Historical aerial photographs (1968/9 & 1987)

WEST MELBOURNE EAO - AMENDMENT C309 -
WEST MELBOURNE STRUCTURE PLAN:
PRELIMINARY LAND CONTAMINATION ASSESSMENT

CITY OF MELBOURNE

GIS ID: 7629

COPYRIGHT

Aerial Imagery copyright
City of Melbourne

0 2 4 8 12 16 20 metres

SCALE (at A4) (BUILDING MAP) 1:400
DATUM GDA 94, PROJECTION MGA Zone 55

PROJECT: 18113718
DATE: 27 FEB 2019
DRAWN: TPC
CHECKED: IMK



Information contained on this drawing is the copyright of Golder Associates Pty. Ltd. Unauthorised use or reproduction of this plan either wholly or in part without written permission infringes copyright. © Golder Associates Pty. Ltd.

CoM Property ID: 103016

32 Eades Place WEST MELBOURNE VIC 3003



LEGEND

 Parcel Boundary



Action Plan

EAO Recommendation

Do Not Apply EAO

EAO Comment

Site has not identified as being potentially contaminated in accordance with the Potentially Contaminated Land General Practice Note (DSE, 2005)

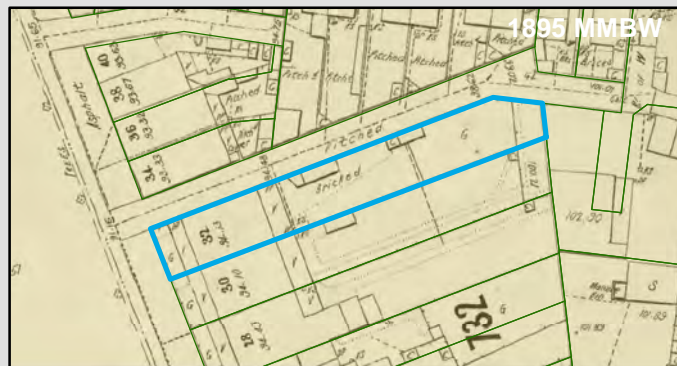
Resources used to make decision



Site Use Summary

Current Land Use
Residential

Historic Land Use
Residential



Key Information Supporting EAO Decision

Research indicates this site has currently and previously been used for residential purposes.

Additional Considerations

Resources used to make decision

Site inspection, Historical aerial photographs (1968/9 & 1987)

WEST MELBOURNE EAO - AMENDMENT C309 -
WEST MELBOURNE STRUCTURE PLAN:
PRELIMINARY LAND CONTAMINATION ASSESSMENT

CITY OF MELBOURNE

GIS ID: 7630

COPYRIGHT

Aerial Imagery copyright
City of Melbourne

0 4 8 16 24 32 40 metres

SCALE (at A4) (BUILDING MAP) 1:800
DATUM GDA 94, PROJECTION MGA Zone 55


PROJECT: 18113718
DATE: 27 FEB 2019
DRAWN: TPC
CHECKED: IMK



Information contained on this drawing is the copyright of Golder Associates Pty. Ltd. Unauthorised use or reproduction of this plan either wholly or in part without written permission infringes copyright. © Golder Associates Pty. Ltd.



LEGEND

 Parcel Boundary

Action Plan

EAO Recommendation

Do Not Apply EAO

EAO Comment

Site has not identified as being potentially contaminated in accordance with the Potentially Contaminated Land General Practice Note (DSE, 2005)

Site Use Summary

Current Land Use
Residential

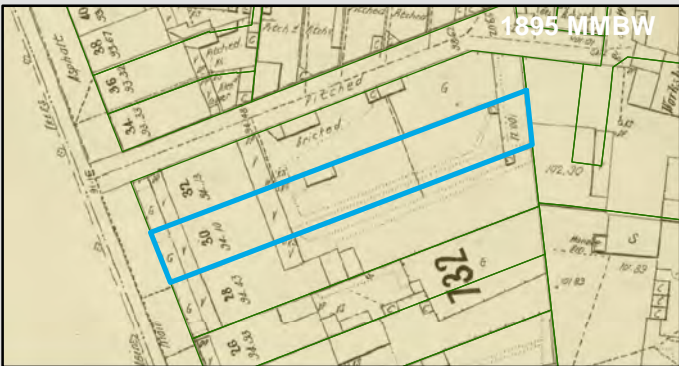
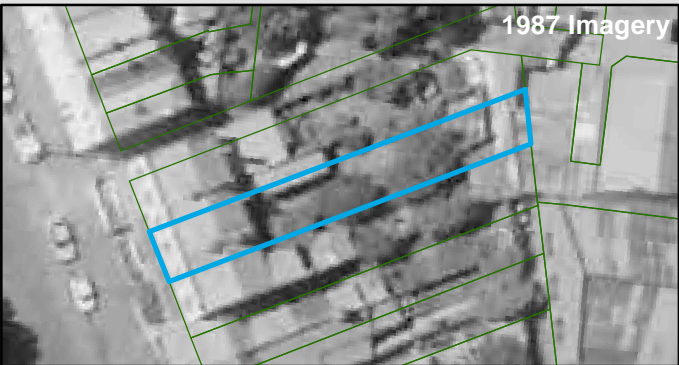
Historic Land Use
Residential

Key Information Supporting EAO Decision

Research indicates this site has currently and previously been used for residential purposes.

Additional Considerations

Resources used to make decision



Resources used to make decision

Site inspection, Historical aerial photographs (1968/9 & 1987)

WEST MELBOURNE EAO - AMENDMENT C309 -
WEST MELBOURNE STRUCTURE PLAN:
PRELIMINARY LAND CONTAMINATION ASSESSMENT

CITY OF MELBOURNE

GIS ID: 7631

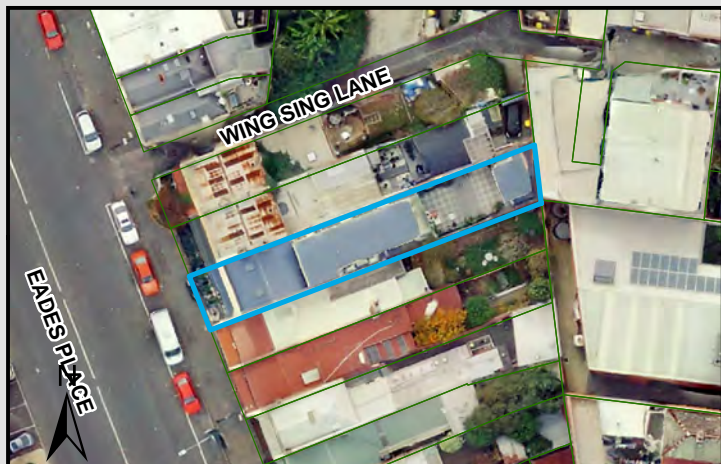
COPYRIGHT
Aerial Imagery copyright
City of Melbourne

0 4 8 16 24 32 40 metres
SCALE (at A4) (BUILDING MAP) 1:800
DATUM GDA 94, PROJECTION MGA Zone 55
PROJECT: 18113718
DATE: 27 FEB 2019
DRAWN: TPC
CHECKED: IMK



CoM Property ID: 103018

28 Eades Place WEST MELBOURNE VIC 3003



LEGEND

 Parcel Boundary

Action Plan

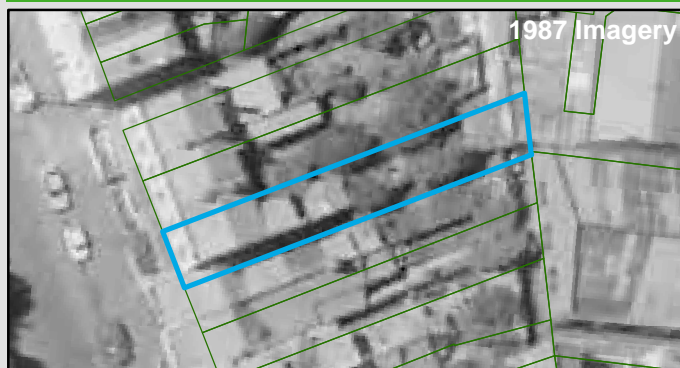
EAO Recommendation

Do Not Apply EAO

EAO Comment

Site has not identified as being potentially contaminated in accordance with the Potentially Contaminated Land General Practice Note (DSE, 2005)

Resources used to make decision



Site Use Summary

Current Land Use
Residential

Historic Land Use
Residential

Key Information Supporting EAO Decision

Research indicates this site has currently and previously been used for residential purposes.

Additional Considerations

Resources used to make decision

Site inspection, Historical aerial photographs (1968/9 & 1987)

WEST MELBOURNE EAO - AMENDMENT C309 -
WEST MELBOURNE STRUCTURE PLAN:
PRELIMINARY LAND CONTAMINATION ASSESSMENT

CITY OF MELBOURNE

GIS ID: 7632

COPYRIGHT

Aerial Imagery copyright
City of Melbourne

0 4 8 16 24 32 40 metres

SCALE (at A4) (BUILDING MAP) 1:800
DATUM GDA 94, PROJECTION MGA Zone 55

PROJECT: 18113718
DATE: 27 FEB 2019
DRAWN: TPC
CHECKED: IMK



Information contained on this drawing is the copyright of Golder Associates Pty. Ltd. Unauthorised use or reproduction of this plan either wholly or in part without written permission infringes copyright. © Golder Associates Pty. Ltd.

CoM Property ID: 103019

26 Eades Place WEST MELBOURNE VIC 3003



LEGEND

 Parcel Boundary



Action Plan

EAO Recommendation

Do Not Apply EAO

EAO Comment

Site has not identified as being potentially contaminated in accordance with the Potentially Contaminated Land General Practice Note (DSE, 2005)

Site Use Summary

Current Land Use
Residential

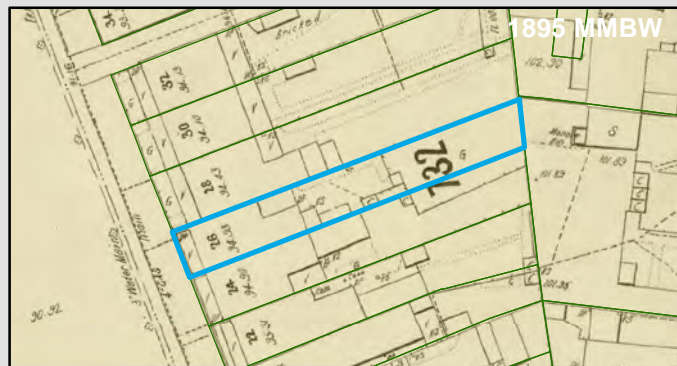
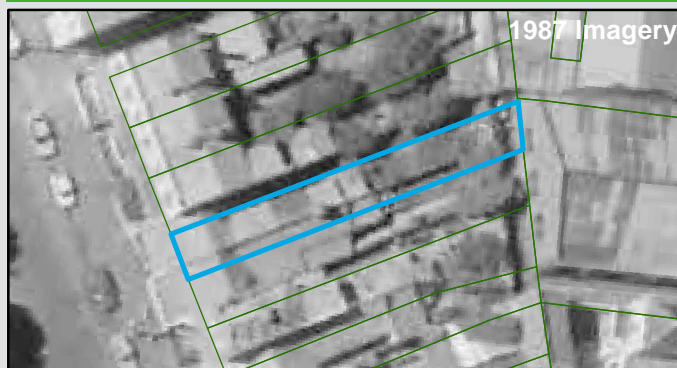
Historic Land Use
Residential

Key Information Supporting EAO Decision

Research indicates this site has currently and previously been used for residential purposes.

Additional Considerations

Resources used to make decision



Resources used to make decision

Site inspection, Historical aerial photographs (1968/9 & 1987)

WEST MELBOURNE EAO - AMENDMENT C309 -
WEST MELBOURNE STRUCTURE PLAN:
PRELIMINARY LAND CONTAMINATION ASSESSMENT

CITY OF MELBOURNE

GIS ID: 7633

COPYRIGHT

Aerial Imagery copyright
City of Melbourne

0 4 8 16 24 32 40 metres

SCALE (at A4) (BUILDING MAP) 1:800
DATUM GDA 94, PROJECTION MGA Zone 55

PROJECT: 18113718
DATE: 27 FEB 2019
DRAWN: TPC
CHECKED: IMK



CoM Property ID: 103020

24 Eades Place WEST MELBOURNE VIC 3003



LEGEND

 Parcel Boundary



Action Plan

EAO Recommendation

Do Not Apply EAO

EAO Comment

Site has not identified as being potentially contaminated in accordance with the Potentially Contaminated Land General Practice Note (DSE, 2005)

Site Use Summary

Current Land Use
Residential

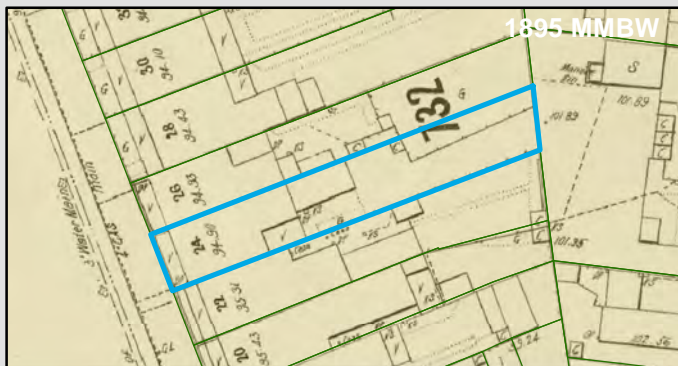
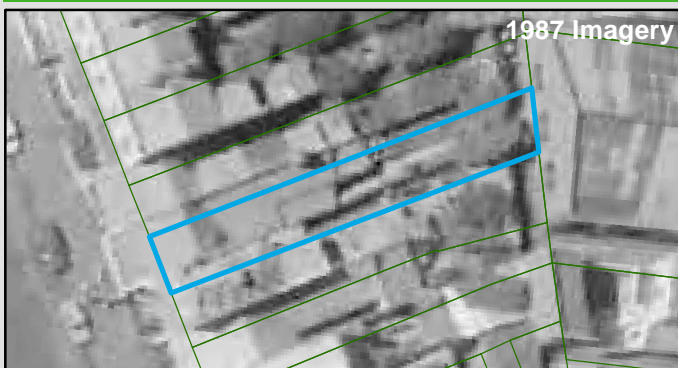
Historic Land Use
Residential

Key Information Supporting EAO Decision

Research indicates this site has currently and previously been used for residential purposes.

Additional Considerations

Resources used to make decision



Resources used to make decision

Site inspection, Historical aerial photographs (1968/9 & 1987)

WEST MELBOURNE EAO - AMENDMENT C309 -
WEST MELBOURNE STRUCTURE PLAN:
PRELIMINARY LAND CONTAMINATION ASSESSMENT

CITY OF MELBOURNE

GIS ID: 7634

COPYRIGHT

Aerial Imagery copyright
City of Melbourne

0 3.5 7 14 21 28 35 metres

SCALE (at A4) (BUILDING MAP) 1:700
DATUM GDA 94, PROJECTION MGA Zone 55

PROJECT: 18113718
DATE: 27 FEB 2019
DRAWN: TPC
CHECKED: IMK



Information contained on this drawing is the copyright of Golder Associates Pty. Ltd. Unauthorised use or reproduction of this plan either wholly or in part without written permission infringes copyright. © Golder Associates Pty. Ltd.

CoM Property ID: 103021

22 Eades Place WEST MELBOURNE VIC 3003



LEGEND

 Parcel Boundary

Action Plan

EAO Recommendation

Do Not Apply EAO

EAO Comment

Site has not identified as being potentially contaminated in accordance with the Potentially Contaminated Land General Practice Note (DSE, 2005)

Site Use Summary

Current Land Use
Residential

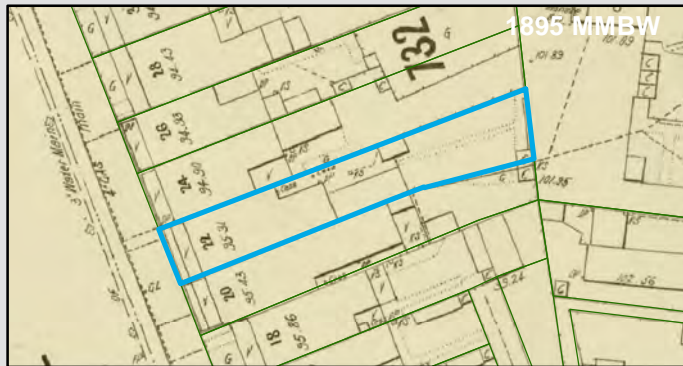
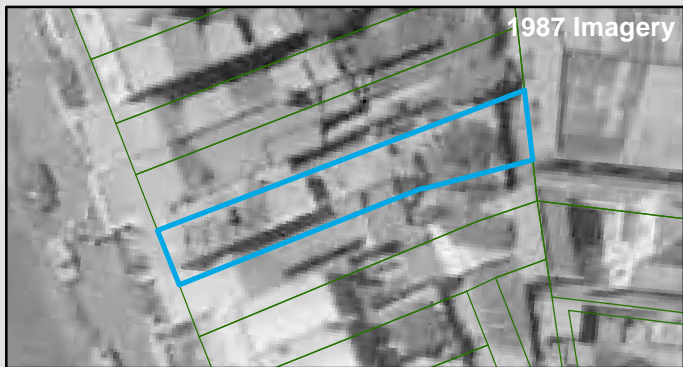
Historic Land Use
Residential

Key Information Supporting EAO Decision

Research indicates this site has currently and previously been used for residential purposes.

Additional Considerations

Resources used to make decision



Resources used to make decision

Site inspection, Historical aerial photographs (1968/9 & 1987)

WEST MELBOURNE EAO - AMENDMENT C309 -
WEST MELBOURNE STRUCTURE PLAN:
PRELIMINARY LAND CONTAMINATION ASSESSMENT

CITY OF MELBOURNE

GIS ID: 7635

COPYRIGHT

Aerial Imagery copyright
City of Melbourne

0 3.5 7 14 21 28 35 metres

SCALE (at A4) (BUILDING MAP) 1:700
DATUM GDA 94, PROJECTION MGA Zone 55

PROJECT: 18113718
DATE: 27 FEB 2019
DRAWN: TPC
CHECKED: IMK



CoM Property ID: 103022

20 Eades Place WEST MELBOURNE VIC 3003



LEGEND

 Parcel Boundary

Action Plan

EAO Recommendation

Do Not Apply EAO

EAO Comment

Site has not identified as being potentially contaminated in accordance with the Potentially Contaminated Land General Practice Note (DSE, 2005)

Site Use Summary

Current Land Use
Residential

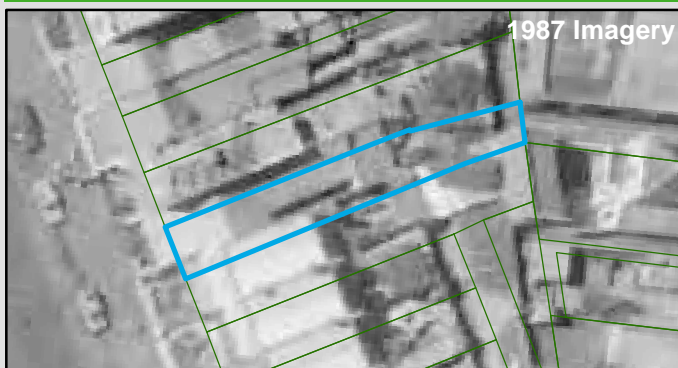
Historic Land Use
Residential

Key Information Supporting EAO Decision

Research indicates this site has currently and previously been used for residential purposes.

Additional Considerations

Resources used to make decision



Resources used to make decision

Site inspection, Historical aerial photographs (1968/9 & 1987)

WEST MELBOURNE EAO - AMENDMENT C309 -
WEST MELBOURNE STRUCTURE PLAN:
PRELIMINARY LAND CONTAMINATION ASSESSMENT

CITY OF MELBOURNE

GIS ID: 7636

COPYRIGHT

Aerial Imagery copyright
City of Melbourne

0 3.5 7 14 21 28 35 metres

SCALE (at A4) (BUILDING MAP) 1:700
DATUM GDA 94, PROJECTION MGA Zone 55

PROJECT: 18113718
DATE: 27 FEB 2019
DRAWN: TPC
CHECKED: IMK



Information contained on this drawing is the copyright of Golder Associates Pty. Ltd. Unauthorised use or reproduction of this plan either wholly or in part without written permission infringes copyright. © Golder Associates Pty. Ltd.

CoM Property ID: 103023

18 Eades Place WEST MELBOURNE VIC 3003



LEGEND

 Parcel Boundary

Action Plan

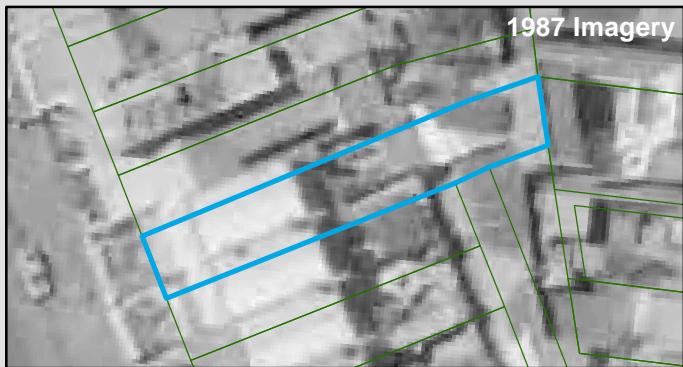
EAO Recommendation

Do Not Apply EAO

EAO Comment

Site has not identified as being potentially contaminated in accordance with the Potentially Contaminated Land General Practice Note (DSE, 2005)

Resources used to make decision



Site Use Summary

Current Land Use
Residential

Historic Land Use
Residential



Key Information Supporting EAO Decision

Research indicates this site has currently and previously been used for residential purposes.

Additional Considerations

Resources used to make decision

Site inspection, Historical aerial photographs (1968/9 & 1987)

WEST MELBOURNE EAO - AMENDMENT C309 -
WEST MELBOURNE STRUCTURE PLAN:
PRELIMINARY LAND CONTAMINATION ASSESSMENT

CITY OF MELBOURNE

GIS ID: 7637

COPYRIGHT

Aerial Imagery copyright
City of Melbourne

0 3 6 12 18 24 30 metres

SCALE (at A4) (BUILDING MAP) 1:600
DATUM GDA 94, PROJECTION MGA Zone 55

PROJECT: 18113718
DATE: 27 FEB 2019
DRAWN: TPC
CHECKED: IMK



Information contained on this drawing is the copyright of Golder Associates Pty. Ltd. Unauthorised use or reproduction of this plan either wholly or in part without written permission infringes copyright. © Golder Associates Pty. Ltd.

CoM Property ID: 103024

16 Eades Place WEST MELBOURNE VIC 3003



LEGEND

 Parcel Boundary

Action Plan

EAO Recommendation

Do Not Apply EAO

EAO Comment

Site has not identified as being potentially contaminated in accordance with the Potentially Contaminated Land General Practice Note (DSE, 2005)

Site Use Summary

Current Land Use
Residential

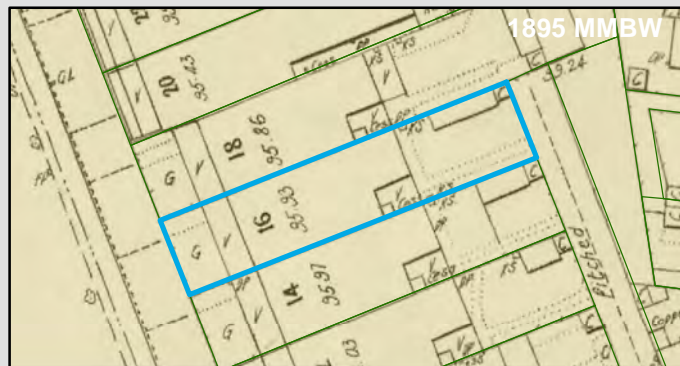
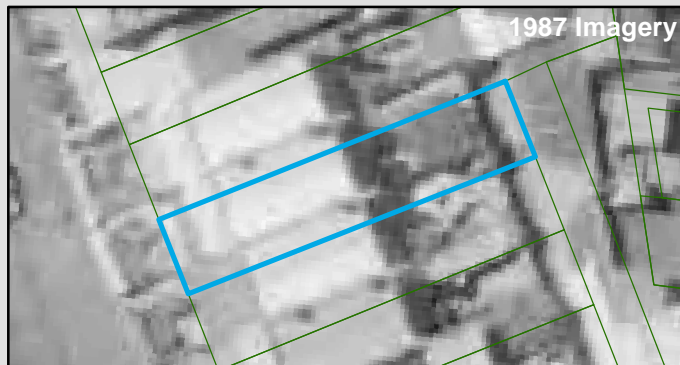
Historic Land Use
Residential

Key Information Supporting EAO Decision

Research indicates this site has currently and previously been used for residential purposes.

Additional Considerations

Resources used to make decision



Resources used to make decision

Site inspection, Historical aerial photographs (1968/9 & 1987)

WEST MELBOURNE EAO - AMENDMENT C309 -
WEST MELBOURNE STRUCTURE PLAN:
PRELIMINARY LAND CONTAMINATION ASSESSMENT

CITY OF MELBOURNE

GIS ID: 7638

COPYRIGHT

Aerial Imagery copyright
City of Melbourne

0 2.5 5 10 15 20 25 metres

SCALE (at A4) (BUILDING MAP) 1:500
DATUM GDA 94, PROJECTION MGA Zone 55

PROJECT: 18113718
DATE: 27 FEB 2019
DRAWN: TPC
CHECKED: IMK



CoM Property ID: 103025

14 Eades Place WEST MELBOURNE VIC 3003



LEGEND

 Parcel Boundary

Action Plan

EAO Recommendation

Do Not Apply EAO

EAO Comment

Site has not identified as being potentially contaminated in accordance with the Potentially Contaminated Land General Practice Note (DSE, 2005)

Site Use Summary

Current Land Use
Residential

Historic Land Use
Residential

Key Information Supporting EAO Decision

Research indicates this site has currently and previously been used for residential purposes.

Additional Considerations

Resources used to make decision



Resources used to make decision

Site inspection, Historical aerial photographs (1968/9 & 1987)

WEST MELBOURNE EAO - AMENDMENT C309 -
WEST MELBOURNE STRUCTURE PLAN:
PRELIMINARY LAND CONTAMINATION ASSESSMENT

CITY OF MELBOURNE

GIS ID: 7639

COPYRIGHT

Aerial Imagery copyright
City of Melbourne

0 2.5 5 10 15 20 25 metres

SCALE (at A4) (BUILDING MAP) 1:500
DATUM GDA 94, PROJECTION MGA Zone 55

PROJECT: 18113718
DATE: 27 FEB 2019
DRAWN: TPC
CHECKED: IMK



Information contained on this drawing is the copyright of Golder Associates Pty. Ltd. Unauthorised use or reproduction of this plan either wholly or in part without written permission infringes copyright. © Golder Associates Pty. Ltd.

CoM Property ID: 103026

12 Eades Place WEST MELBOURNE VIC 3003



LEGEND

 Parcel Boundary



Action Plan

EAO Recommendation

Do Not Apply EAO

EAO Comment

Site has not identified as being potentially contaminated in accordance with the Potentially Contaminated Land General Practice Note (DSE, 2005)

Site Use Summary

Current Land Use
Residential

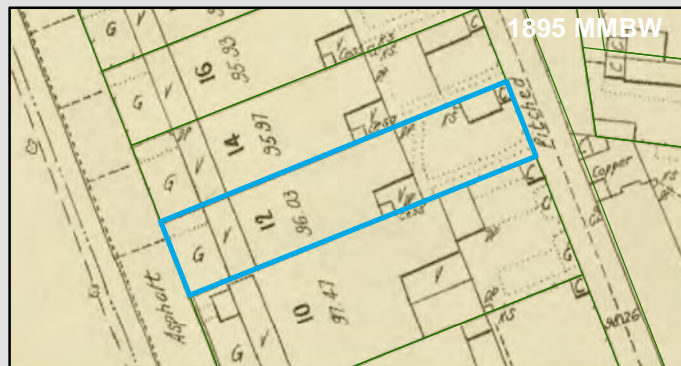
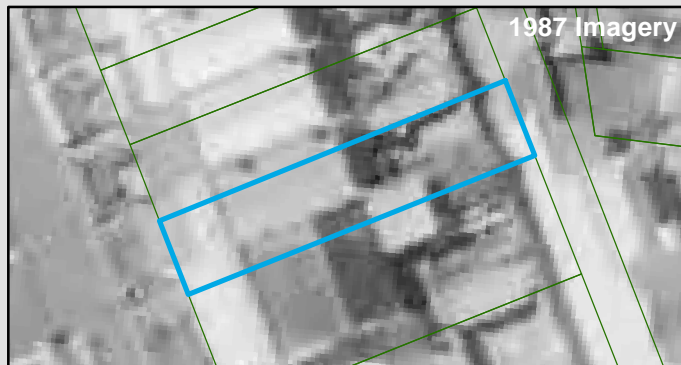
Historic Land Use
Residential

Key Information Supporting EAO Decision

Research indicates this site has currently and previously been used for residential purposes.

Additional Considerations

Resources used to make decision



Resources used to make decision

Site inspection, Historical aerial photographs (1968/9 & 1987)

WEST MELBOURNE EAO - AMENDMENT C309 -
WEST MELBOURNE STRUCTURE PLAN:
PRELIMINARY LAND CONTAMINATION ASSESSMENT

CITY OF MELBOURNE

GIS ID: 7640

COPYRIGHT

Aerial Imagery copyright
City of Melbourne

0 2.5 5 10 15 20 25 metres

SCALE (at A4) (BUILDING MAP) 1:500
DATUM GDA 94, PROJECTION MGA Zone 55

PROJECT: 18113718
DATE: 27 FEB 2019
DRAWN: TPC
CHECKED: IMK



Information contained on this drawing is the copyright of Golder Associates Pty. Ltd. Unauthorised use or reproduction of this plan either wholly or in part without written permission infringes copyright. © Golder Associates Pty. Ltd.

CoM Property ID: 103027

8-10 Eades Place WEST MELBOURNE VIC 3003



LEGEND

 Parcel Boundary

Action Plan

EAO Recommendation

Do Not Apply EAO

EAO Comment

Site has not identified as being potentially contaminated in accordance with the Potentially Contaminated Land General Practice Note (DSE, 2005)

Site Use Summary

Current Land Use
Residential

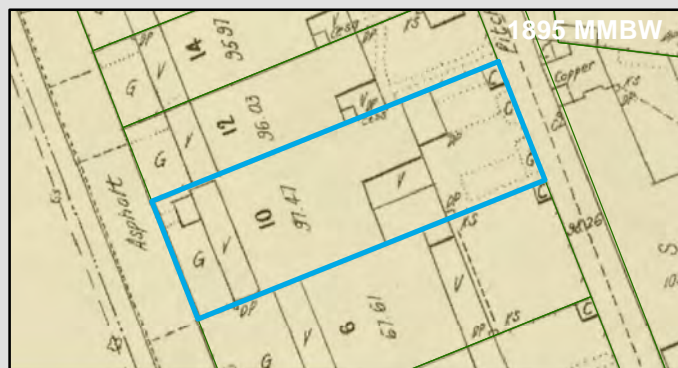
Historic Land Use
Residential

Key Information Supporting EAO Decision

Research indicates this site has currently and previously been used for residential purposes.

Additional Considerations

Resources used to make decision



Resources used to make decision

Site inspection, Historical aerial photographs (1968/9 & 1987)

WEST MELBOURNE EAO - AMENDMENT C309 -
WEST MELBOURNE STRUCTURE PLAN:
PRELIMINARY LAND CONTAMINATION ASSESSMENT

CITY OF MELBOURNE

GIS ID: 7641

COPYRIGHT

Aerial Imagery copyright
City of Melbourne

0 2.5 5 10 15 20 25 metres

SCALE (at A4) (BUILDING MAP) 1:500
DATUM GDA 94, PROJECTION MGA Zone 55

PROJECT: 18113718
DATE: 27 FEB 2019
DRAWN: TPC
CHECKED: IMK



Information contained on this drawing is the copyright of Golder Associates Pty. Ltd. Unauthorised use or reproduction of this plan either wholly or in part without written permission infringes copyright. © Golder Associates Pty. Ltd.

CoM Property ID: 103028

6 Eades Place WEST MELBOURNE VIC 3003



LEGEND

 Parcel Boundary

Action Plan

EAO Recommendation

Do Not Apply EAO

EAO Comment

Site has not identified as being potentially contaminated in accordance with the Potentially Contaminated Land General Practice Note (DSE, 2005)

Site Use Summary

Current Land Use
Residential

Historic Land Use
Residential

Key Information Supporting EAO Decision

Research indicates this site has currently and previously been used for residential purposes.

Additional Considerations

Resources used to make decision



Resources used to make decision

Site inspection, Historical aerial photographs (1968/9 & 1987)

WEST MELBOURNE EAO - AMENDMENT C309 -
WEST MELBOURNE STRUCTURE PLAN:
PRELIMINARY LAND CONTAMINATION ASSESSMENT

CITY OF MELBOURNE

GIS ID: 7642

COPYRIGHT

Aerial Imagery copyright
City of Melbourne

0 2.5 5 10 15 20 25 metres

SCALE (at A4) (BUILDING MAP) 1:500
DATUM GDA 94, PROJECTION MGA Zone 55

PROJECT: 18113718
DATE: 27 FEB 2019
DRAWN: TPC
CHECKED: IMK



Information contained on this drawing is the copyright of Golder Associates Pty. Ltd. Unauthorised use or reproduction of this plan either wholly or in part without written permission infringes copyright. © Golder Associates Pty. Ltd.

CoM Property ID: 103029

4 Eades Place WEST MELBOURNE VIC 3003



LEGEND

 Parcel Boundary



Action Plan

EAO Recommendation

Do Not Apply EAO

EAO Comment

Site has not identified as being potentially contaminated in accordance with the Potentially Contaminated Land General Practice Note (DSE, 2005)

Resources used to make decision



Site Use Summary

Current Land Use
Residential

Historic Land Use
Residential



Key Information Supporting EAO Decision

Research indicates this site has currently and previously been used for residential purposes.

Additional Considerations

Resources used to make decision

Site inspection, Historical aerial photographs (1968/9 & 1987)

WEST MELBOURNE EAO - AMENDMENT C309 -
WEST MELBOURNE STRUCTURE PLAN:
PRELIMINARY LAND CONTAMINATION ASSESSMENT

CITY OF MELBOURNE

GIS ID: 7643

COPYRIGHT

Aerial Imagery copyright
City of Melbourne

0 2.5 5 10 15 20 25 metres

SCALE (at A4) (BUILDING MAP) 1:500
DATUM GDA 94, PROJECTION MGA Zone 55

PROJECT: 18113718
DATE: 27 FEB 2019
DRAWN: TPC
CHECKED: IMK



Information contained on this drawing is the copyright of Golder Associates Pty. Ltd. Unauthorised use or reproduction of this plan either wholly or in part without written permission infringes copyright. © Golder Associates Pty. Ltd.

CoM Property ID: 103030

2 Eades Place WEST MELBOURNE VIC 3003



LEGEND

 Parcel Boundary

Action Plan

EAO Recommendation

Do Not Apply EAO

EAO Comment

Site has not identified as being potentially contaminated in accordance with the Potentially Contaminated Land General Practice Note (DSE, 2005)

Resources used to make decision



Site Use Summary

Current Land Use
Residential

Historic Land Use
Residential

Key Information Supporting EAO Decision

Research indicates this site has currently and previously been used for residential purposes.



Additional Considerations

Resources used to make decision

Site inspection, Historical aerial photographs (1968/9 & 1987)

WEST MELBOURNE EAO - AMENDMENT C309 -
WEST MELBOURNE STRUCTURE PLAN:
PRELIMINARY LAND CONTAMINATION ASSESSMENT

CITY OF MELBOURNE

GIS ID: 7644

COPYRIGHT

Aerial Imagery copyright
City of Melbourne

0 2.5 5 10 15 20 25 metres

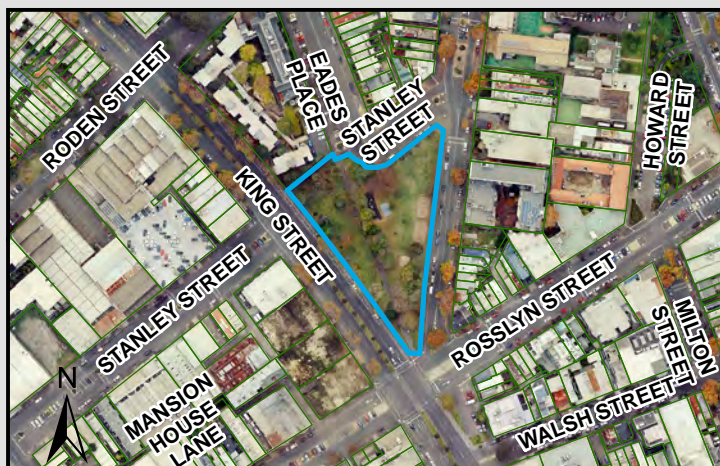
SCALE (at A4) (BUILDING MAP) 1:500
DATUM GDA 94, PROJECTION MGA Zone 55

PROJECT: 18113718
DATE: 27 FEB 2019
DRAWN: TPC
CHECKED: IMK



CoM Property ID: 103031

Eades Park 372-376 King Street WEST MELBOURNE VIC 3003



LEGEND

 Parcel Boundary



Action Plan

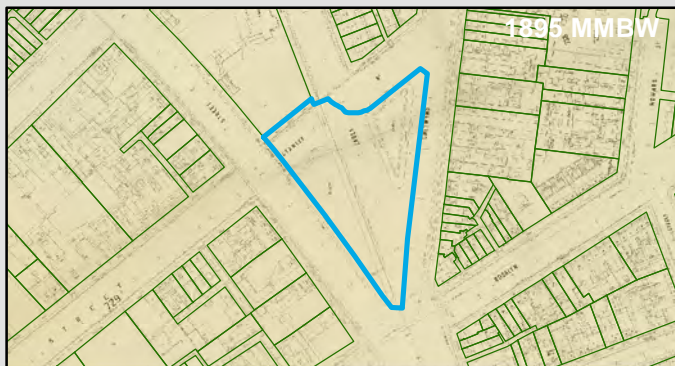
EAO Recommendation

Do Not Apply EAO

EAO Comment

Site has not identified as being potentially contaminated in accordance with the Potentially Contaminated Land General Practice Note (DSE, 2005)

Resources used to make decision



Site Use Summary

Current Land Use

Public land (schools, hospitals, parks)

Historic Land Use

Other (unsure)

Key Information Supporting EAO Decision

No current or previous potentially contaminating land uses identified on site.

Additional Considerations

Resources used to make decision

Site inspection, Historical aerial photographs (1968/9 & 1987)

WEST MELBOURNE EAO - AMENDMENT C309 -
WEST MELBOURNE STRUCTURE PLAN:
PRELIMINARY LAND CONTAMINATION ASSESSMENT

CITY OF MELBOURNE

GIS ID: 7645

COPYRIGHT

Aerial Imagery copyright
City of Melbourne

0 20 40 80 120 160 200 metres

SCALE (at A4) (BUILDING MAP) 1:4,800
DATUM GDA 94, PROJECTION MGA Zone 55

PROJECT: 18113718
DATE: 27 FEB 2019
DRAWN: TPC
CHECKED: IMK



Information contained on this drawing is the copyright of Golder Associates Pty. Ltd. Unauthorised use or reproduction of this plan either wholly or in part without written permission infringes copyright. © Golder Associates Pty. Ltd.



LEGEND

 Parcel Boundary



Action Plan

EAO Recommendation

Do Not Apply EAO

EAO Comment

Site has not identified as being potentially contaminated in accordance with the Potentially Contaminated Land General Practice Note (DSE, 2005)

Site Use Summary

Current Land Use

Public land (schools, hospitals, parks)

Historic Land Use

Public land (schools, hospitals, parks)

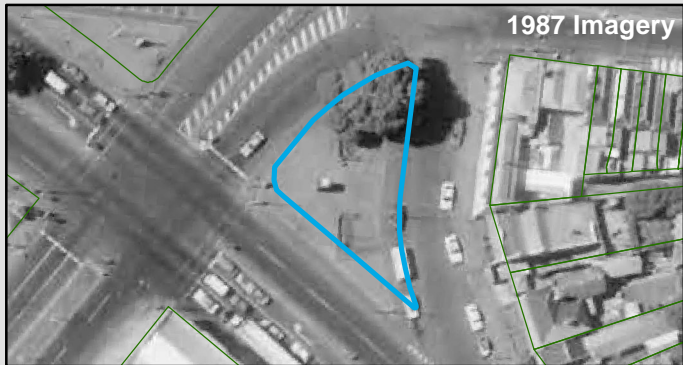
Key Information Supporting EAO Decision

No current or previous potentially contaminating land uses identified on site.

Additional Considerations

Underground public toilets on site.

Resources used to make decision



Resources used to make decision

West Melbourne Heritage Review Appendix 2 (May 2016), Site inspection, Historical aerial photographs (1968/9 & 1987)

WEST MELBOURNE EAO - AMENDMENT C309 -
WEST MELBOURNE STRUCTURE PLAN:
PRELIMINARY LAND CONTAMINATION ASSESSMENT

CITY OF MELBOURNE

GIS ID: 13817

COPYRIGHT

Aerial Imagery copyright
City of Melbourne

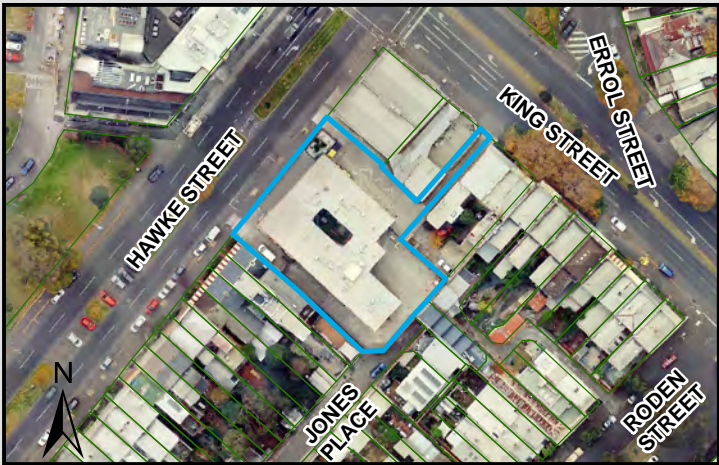
0 5 10 20 30 40 50 metres

SCALE (at A4) (BUILDING MAP) 1:1,400
DATUM GDA 94, PROJECTION MGA Zone 55


PROJECT: 18113718
DATE: 27 FEB 2019
DRAWN: TPC
CHECKED: IMK



Information contained on this drawing is the copyright of Golder Associates Pty. Ltd. Unauthorised use or reproduction of this plan either wholly or in part without written permission infringes copyright. © Golder Associates Pty. Ltd.



LEGEND

 Parcel Boundary



Action Plan

EAO Recommendation

Do Not Apply EAO

EAO Comment

Site has not identified as being potentially contaminated in accordance with the Potentially Contaminated Land General Practice Note (DSE, 2005)

Site Use Summary

Current Land Use
Commercial

Historic Land Use
Commercial

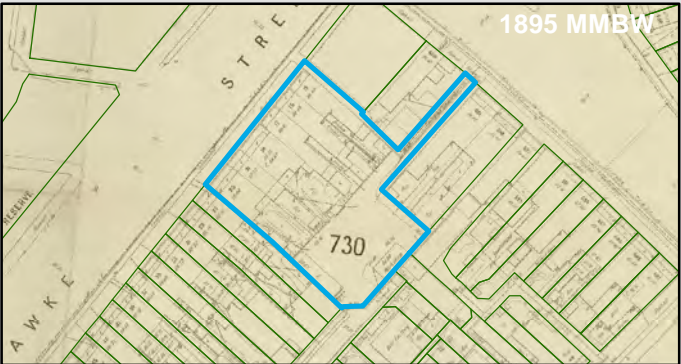
Key Information Supporting EAO Decision

No current or previous potentially contaminating land uses identified on site.

Additional Considerations

Miami Hotel.

Resources used to make decision



Resources used to make decision

West Melbourne Heritage Review Appendix 2 (May 2016), Site inspection, Historical aerial photographs (1968/9 & 1987)

WEST MELBOURNE EAO - AMENDMENT C309 -
WEST MELBOURNE STRUCTURE PLAN:
PRELIMINARY LAND CONTAMINATION ASSESSMENT

CITY OF MELBOURNE

GIS ID: 7611

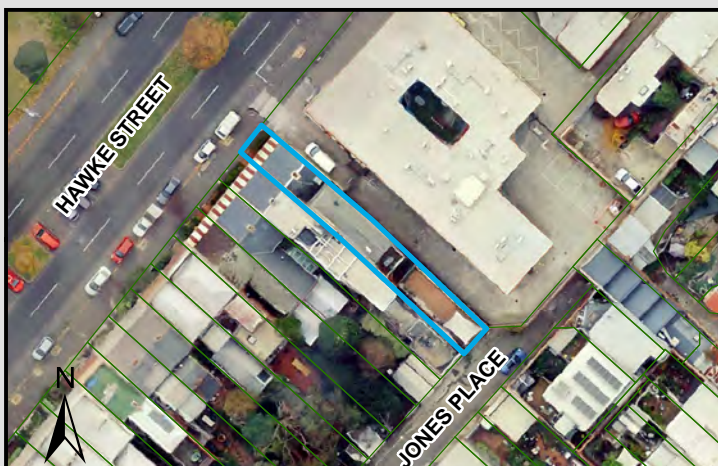
COPYRIGHT
Aerial Imagery copyright
City of Melbourne

0 5 10 20 30 40 50 metres
SCALE (at A4) (BUILDING MAP) 1:1,900
DATUM GDA 94, PROJECTION MGA Zone 55
PROJECT: 18113718
DATE: 27 FEB 2019
DRAWN: TPC
CHECKED: IMK



CoM Property ID: 104712

27 Hawke Street WEST MELBOURNE VIC 3003



LEGEND

 Parcel Boundary

Action Plan

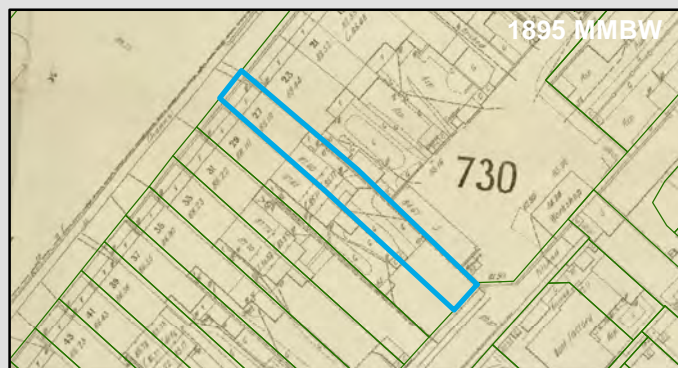
EAO Recommendation

Do Not Apply EAO

EAO Comment

Site has not identified as being potentially contaminated in accordance with the Potentially Contaminated Land General Practice Note (DSE, 2005)

Resources used to make decision



Site Use Summary

Current Land Use
Residential

Historic Land Use
Residential

Key Information Supporting EAO Decision

Research indicates this site has currently and previously been used for residential purposes.

Additional Considerations

Resources used to make decision

Site inspection, Historical aerial photographs (1968/9 & 1987)

WEST MELBOURNE EAO - AMENDMENT C309 -
WEST MELBOURNE STRUCTURE PLAN:
PRELIMINARY LAND CONTAMINATION ASSESSMENT

CITY OF MELBOURNE

GIS ID: 8676

COPYRIGHT

Aerial Imagery copyright
City of Melbourne

0 5 10 20 30 40 50 metres

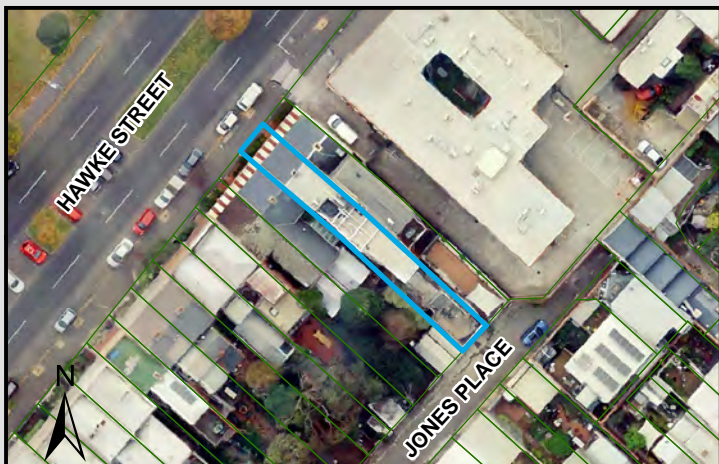
SCALE (at A4) (BUILDING MAP) 1:1,100
DATUM GDA 94, PROJECTION MGA Zone 55

PROJECT: 18113718
DATE: 27 FEB 2019
DRAWN: TPC
CHECKED: IMK



CoM Property ID: 104713

29 Hawke Street WEST MELBOURNE VIC 3003



LEGEND

 Parcel Boundary

Action Plan

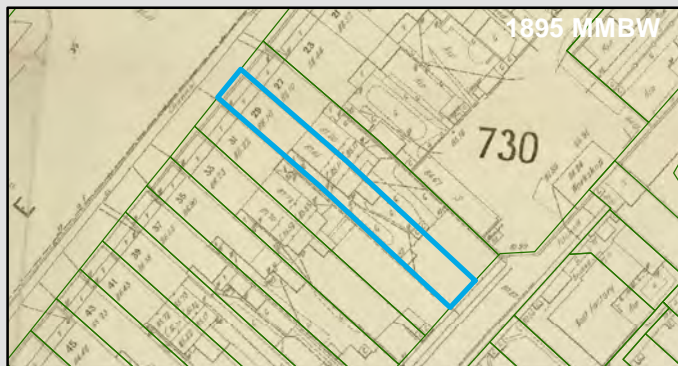
EAO Recommendation

Do Not Apply EAO

EAO Comment

Site has not identified as being potentially contaminated in accordance with the Potentially Contaminated Land General Practice Note (DSE, 2005)

Resources used to make decision



Site Use Summary

Current Land Use
Residential

Historic Land Use
Residential

Key Information Supporting EAO Decision

Research indicates this site has currently and previously been used for residential purposes.

Additional Considerations

Resources used to make decision

Site inspection, Historical aerial photographs (1968/9 & 1987)

WEST MELBOURNE EAO - AMENDMENT C309 -
WEST MELBOURNE STRUCTURE PLAN:
PRELIMINARY LAND CONTAMINATION ASSESSMENT

CITY OF MELBOURNE

GIS ID: 8677

COPYRIGHT

Aerial Imagery copyright
City of Melbourne

0 5 10 20 30 40 50 metres

SCALE (at A4) (BUILDING MAP) 1:1,100
DATUM GDA 94, PROJECTION MGA Zone 55

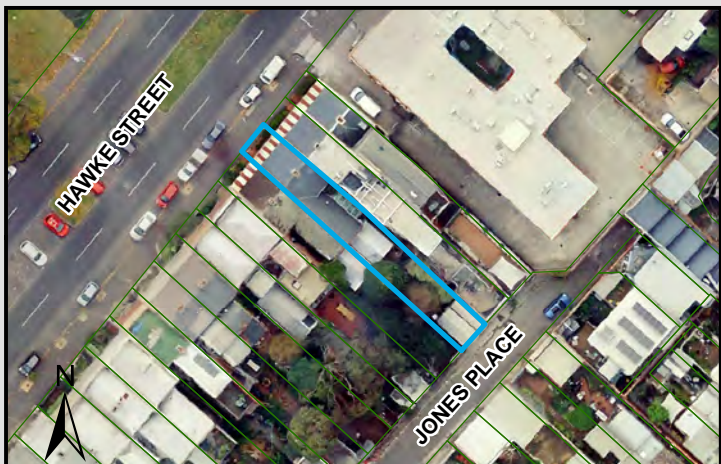
PROJECT: 18113718
DATE: 27 FEB 2019
DRAWN: TPC
CHECKED: IMK



Information contained on this drawing is the copyright of Golder Associates Pty. Ltd. Unauthorised use or reproduction of this plan either wholly or in part without written permission infringes copyright. © Golder Associates Pty. Ltd.

CoM Property ID: 104714

31 Hawke Street WEST MELBOURNE VIC 3003



LEGEND

 Parcel Boundary



Action Plan

EAO Recommendation

Do Not Apply EAO

EAO Comment

Site has not identified as being potentially contaminated in accordance with the Potentially Contaminated Land General Practice Note (DSE, 2005)

Resources used to make decision



1987 Imagery

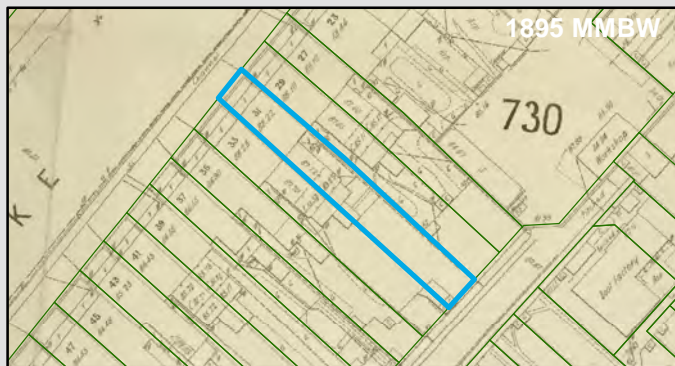
Site Use Summary

Current Land Use
Residential

Historic Land Use
Residential

Key Information Supporting EAO Decision

Research indicates this site has currently and previously been used for residential purposes.



1895 MMBW

Additional Considerations

Resources used to make decision

Site inspection, Historical aerial photographs (1968/9 & 1987)

WEST MELBOURNE EAO - AMENDMENT C309 -
WEST MELBOURNE STRUCTURE PLAN:
PRELIMINARY LAND CONTAMINATION ASSESSMENT

CITY OF MELBOURNE

GIS ID: 8678

COPYRIGHT

Aerial Imagery copyright
City of Melbourne

0 5 10 20 30 40 50 metres

SCALE (at A4) (BUILDING MAP) 1:1,100
DATUM GDA 94, PROJECTION MGA Zone 55

PROJECT: 18113718
DATE: 27 FEB 2019
DRAWN: TPC
CHECKED: IMK



CoM Property ID: 104715

33 Hawke Street WEST MELBOURNE VIC 3003



LEGEND

 Parcel Boundary

Action Plan

EAO Recommendation

Do Not Apply EAO

EAO Comment

Site has not identified as being potentially contaminated in accordance with the Potentially Contaminated Land General Practice Note (DSE, 2005)

Site Use Summary

Current Land Use
Residential

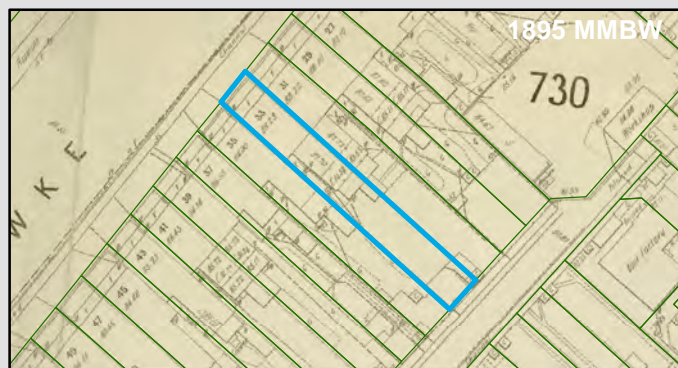
Historic Land Use
Residential

Key Information Supporting EAO Decision

Research indicates this site has currently and previously been used for residential purposes.

Additional Considerations

Resources used to make decision



Resources used to make decision

Site inspection, Historical aerial photographs (1968/9 & 1987)

WEST MELBOURNE EAO - AMENDMENT C309 -
WEST MELBOURNE STRUCTURE PLAN:
PRELIMINARY LAND CONTAMINATION ASSESSMENT

CITY OF MELBOURNE

GIS ID: 8679

COPYRIGHT

Aerial Imagery copyright
City of Melbourne

0 5 10 20 30 40 50 metres

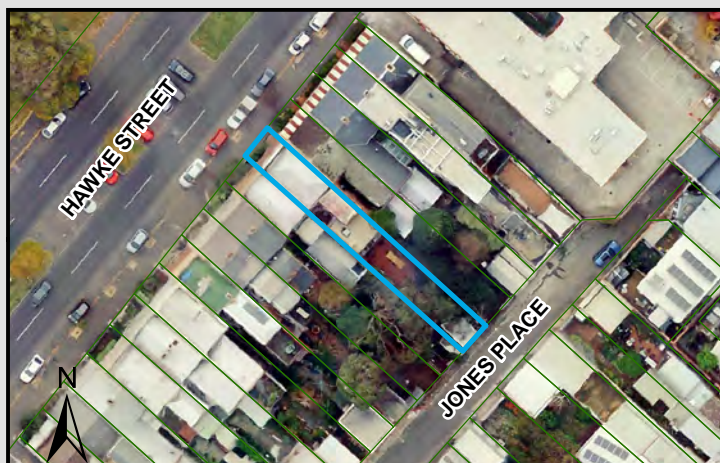
SCALE (at A4) (BUILDING MAP) 1:1,100
DATUM GDA 94, PROJECTION MGA Zone 55

PROJECT: 18113718
DATE: 27 FEB 2019
DRAWN: TPC
CHECKED: IMK



CoM Property ID: 104716

35 Hawke Street WEST MELBOURNE VIC 3003



LEGEND

 Parcel Boundary



Action Plan

EAO Recommendation

Do Not Apply EAO

EAO Comment

Site has not identified as being potentially contaminated in accordance with the Potentially Contaminated Land General Practice Note (DSE, 2005)

Site Use Summary

Current Land Use
Residential

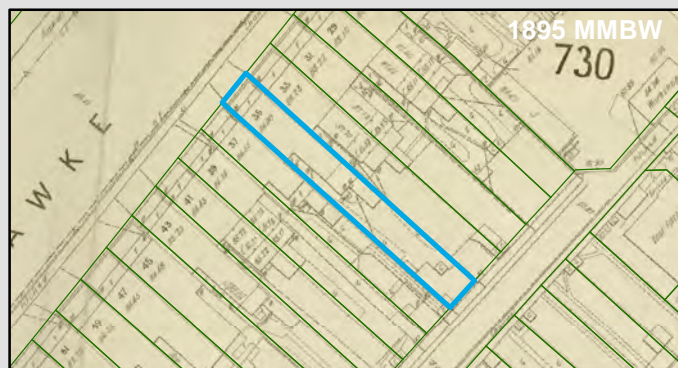
Historic Land Use
Residential

Key Information Supporting EAO Decision

Research indicates this site has currently and previously been used for residential purposes.

Additional Considerations

Resources used to make decision



Resources used to make decision

Site inspection, Historical aerial photographs (1968/9 & 1987)

WEST MELBOURNE EAO - AMENDMENT C309 -
WEST MELBOURNE STRUCTURE PLAN:
PRELIMINARY LAND CONTAMINATION ASSESSMENT

CITY OF MELBOURNE

GIS ID: 8680

COPYRIGHT

Aerial Imagery copyright
City of Melbourne

0 5 10 20 30 40 50 metres

SCALE (at A4) (BUILDING MAP) 1:1,100
DATUM GDA 94, PROJECTION MGA Zone 55

PROJECT: 18113718
DATE: 27 FEB 2019
DRAWN: TPC
CHECKED: IMK



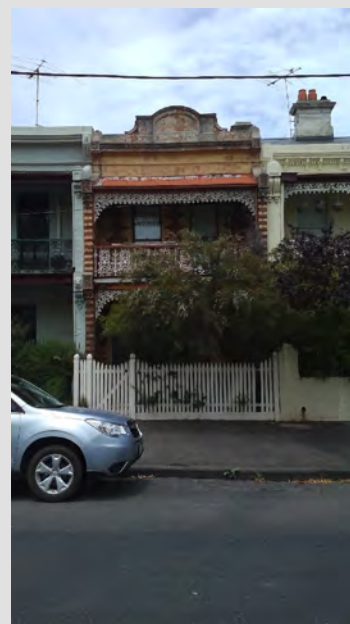
CoM Property ID: 104717

37 Hawke Street WEST MELBOURNE VIC 3003



LEGEND

 Parcel Boundary



Action Plan

EAO Recommendation

Do Not Apply EAO

EAO Comment

Site has not identified as being potentially contaminated in accordance with the Potentially Contaminated Land General Practice Note (DSE, 2005)

Site Use Summary

Current Land Use
Residential

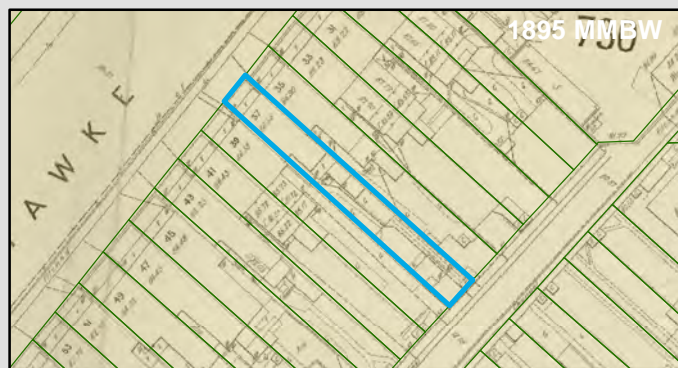
Historic Land Use
Residential

Key Information Supporting EAO Decision

Research indicates this site has currently and previously been used for residential purposes.

Additional Considerations

Resources used to make decision



Resources used to make decision

Site inspection, Historical aerial photographs (1968/9 & 1987)

WEST MELBOURNE EAO - AMENDMENT C309 -
WEST MELBOURNE STRUCTURE PLAN:
PRELIMINARY LAND CONTAMINATION ASSESSMENT

CITY OF MELBOURNE

GIS ID: 8681

COPYRIGHT

Aerial Imagery copyright
City of Melbourne

0 5 10 20 30 40 50 metres

SCALE (at A4) (BUILDING MAP) 1:1,100
DATUM GDA 94, PROJECTION MGA Zone 55

PROJECT: 18113718
DATE: 27 FEB 2019
DRAWN: TPC
CHECKED: IMK



Information contained on this drawing is the copyright of Golder Associates Pty. Ltd. Unauthorised use or reproduction of this plan either wholly or in part without written permission infringes copyright. © Golder Associates Pty. Ltd.

CoM Property ID: 104718

39 Hawke Street WEST MELBOURNE VIC 3003



LEGEND

 Parcel Boundary



Action Plan

EAO Recommendation

Do Not Apply EAO

EAO Comment

Site has not identified as being potentially contaminated in accordance with the Potentially Contaminated Land General Practice Note (DSE, 2005)

Site Use Summary

Current Land Use
Residential

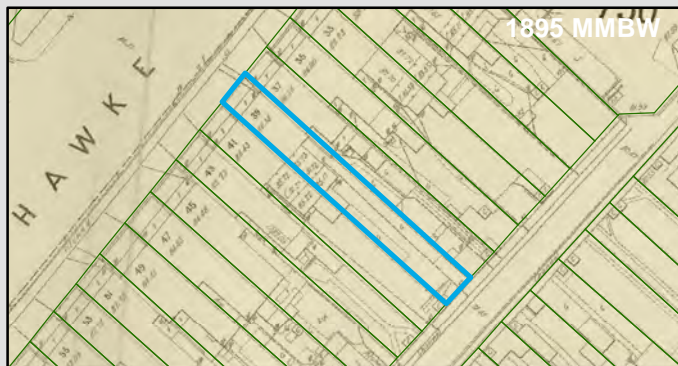
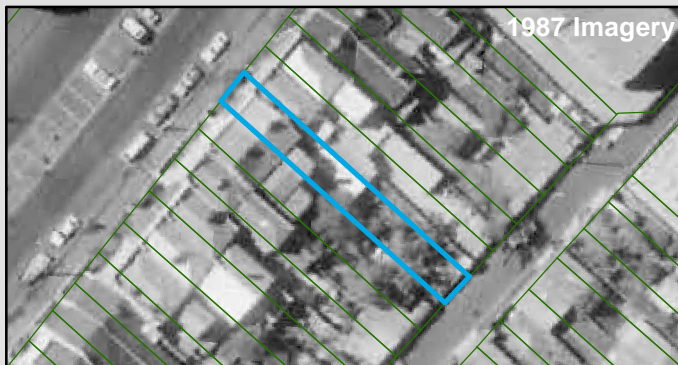
Historic Land Use
Residential

Key Information Supporting EAO Decision

Research indicates this site has currently and previously been used for residential purposes.

Additional Considerations

Resources used to make decision



Resources used to make decision

Site inspection, Historical aerial photographs (1968/9 & 1987)

WEST MELBOURNE EAO - AMENDMENT C309 -
WEST MELBOURNE STRUCTURE PLAN:
PRELIMINARY LAND CONTAMINATION ASSESSMENT

CITY OF MELBOURNE

GIS ID: 8682

COPYRIGHT

Aerial Imagery copyright
City of Melbourne

0 5 10 20 30 40 50 metres

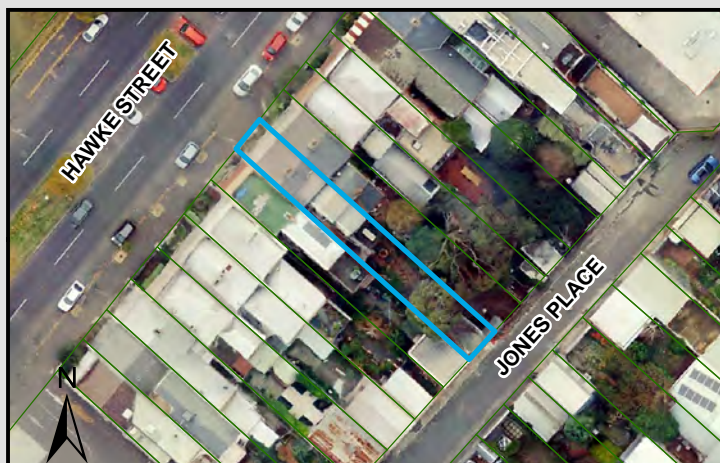
SCALE (at A4) (BUILDING MAP) 1:1,100
DATUM GDA 94, PROJECTION MGA Zone 55

PROJECT: 18113718
DATE: 27 FEB 2019
DRAWN: TPC
CHECKED: IMK



CoM Property ID: 104719

41 Hawke Street WEST MELBOURNE VIC 3003



LEGEND

 Parcel Boundary

Action Plan

EAO Recommendation

Do Not Apply EAO

EAO Comment

Site has not identified as being potentially contaminated in accordance with the Potentially Contaminated Land General Practice Note (DSE, 2005)

Site Use Summary

Current Land Use
Residential

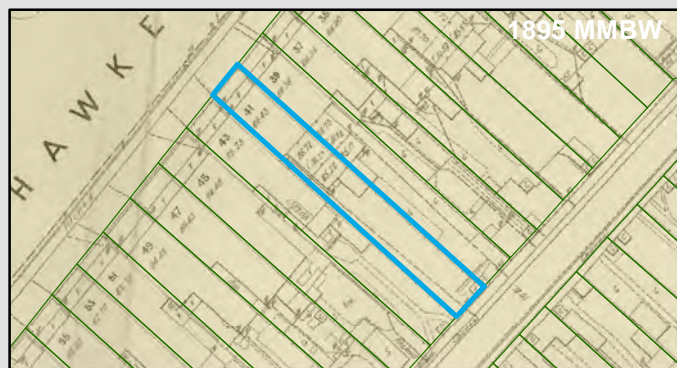
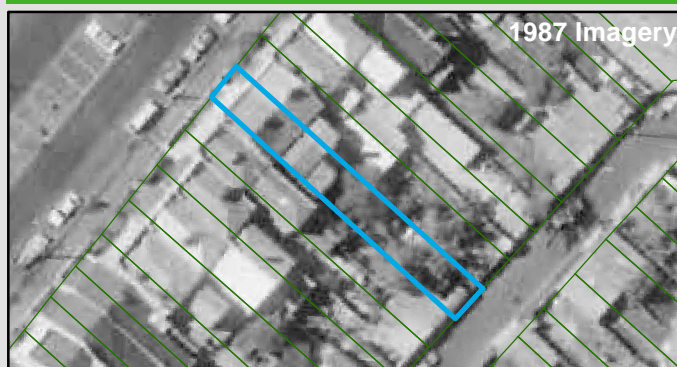
Historic Land Use
Residential

Key Information Supporting EAO Decision

Research indicates this site has currently and previously been used for residential purposes.

Additional Considerations

Resources used to make decision



Resources used to make decision

Site inspection, Historical aerial photographs (1968/9 & 1987)

WEST MELBOURNE EAO - AMENDMENT C309 -
WEST MELBOURNE STRUCTURE PLAN:
PRELIMINARY LAND CONTAMINATION ASSESSMENT

CITY OF MELBOURNE

GIS ID: 8683

COPYRIGHT

Aerial Imagery copyright
City of Melbourne

0 5 10 20 30 40 50 metres

SCALE (at A4) (BUILDING MAP) 1:1,000
DATUM GDA 94, PROJECTION MGA Zone 55

PROJECT: 18113718
DATE: 27 FEB 2019
DRAWN: TPC
CHECKED: IMK



CoM Property ID: 104720

43 Hawke Street WEST MELBOURNE VIC 3003



LEGEND

 Parcel Boundary



Action Plan

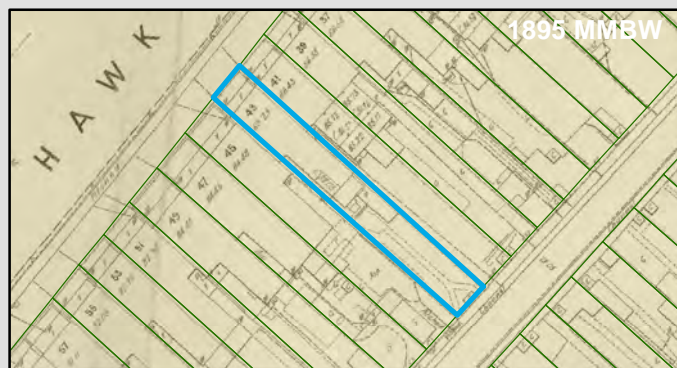
EAO Recommendation

Do Not Apply EAO

EAO Comment

Site has not identified as being potentially contaminated in accordance with the Potentially Contaminated Land General Practice Note (DSE, 2005)

Resources used to make decision



Site Use Summary

Current Land Use
Residential

Historic Land Use
Residential

Key Information Supporting EAO Decision

Research indicates this site has currently and previously been used for residential purposes.

Additional Considerations

Resources used to make decision

Site inspection, Historical aerial photographs (1968/9 & 1987)

WEST MELBOURNE EAO - AMENDMENT C309 -
WEST MELBOURNE STRUCTURE PLAN:
PRELIMINARY LAND CONTAMINATION ASSESSMENT

CITY OF MELBOURNE

GIS ID: 8684

COPYRIGHT

Aerial Imagery copyright
City of Melbourne

0 5 10 20 30 40 50 metres

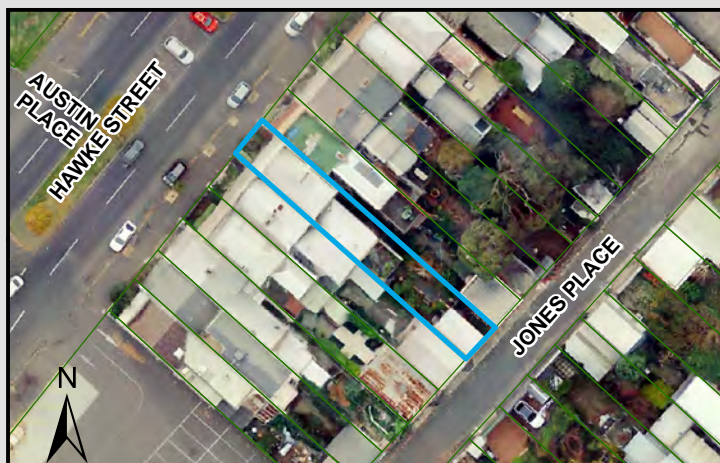
SCALE (at A4) (BUILDING MAP) 1:1,000
DATUM GDA 94, PROJECTION MGA Zone 55

PROJECT: 18113718
DATE: 27 FEB 2019
DRAWN: TPC
CHECKED: IMK



CoM Property ID: 104721

45 Hawke Street WEST MELBOURNE VIC 3003



LEGEND

 Parcel Boundary

Action Plan

EAO Recommendation

Do Not Apply EAO

EAO Comment

Site has not identified as being potentially contaminated in accordance with the Potentially Contaminated Land General Practice Note (DSE, 2005)

Site Use Summary

Current Land Use
Residential

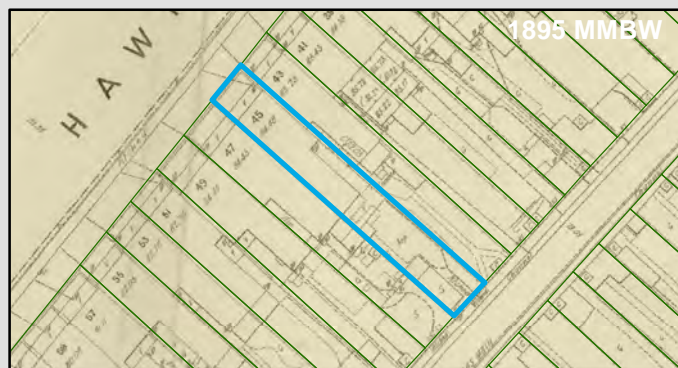
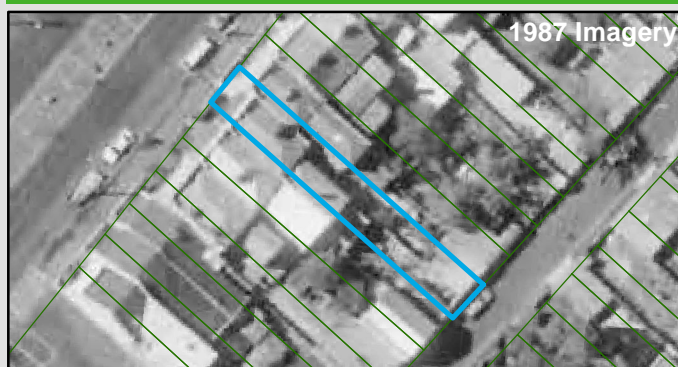
Historic Land Use
Residential

Key Information Supporting EAO Decision

Research indicates this site has currently and previously been used for residential purposes.

Additional Considerations

Resources used to make decision



Resources used to make decision

Site inspection, Historical aerial photographs (1968/9 & 1987)

WEST MELBOURNE EAO - AMENDMENT C309 -
WEST MELBOURNE STRUCTURE PLAN:
PRELIMINARY LAND CONTAMINATION ASSESSMENT

CITY OF MELBOURNE

GIS ID: 8685

COPYRIGHT

Aerial Imagery copyright
City of Melbourne

0 5 10 20 30 40 50 metres

SCALE (at A4) (BUILDING MAP) 1:1,000
DATUM GDA 94, PROJECTION MGA Zone 55

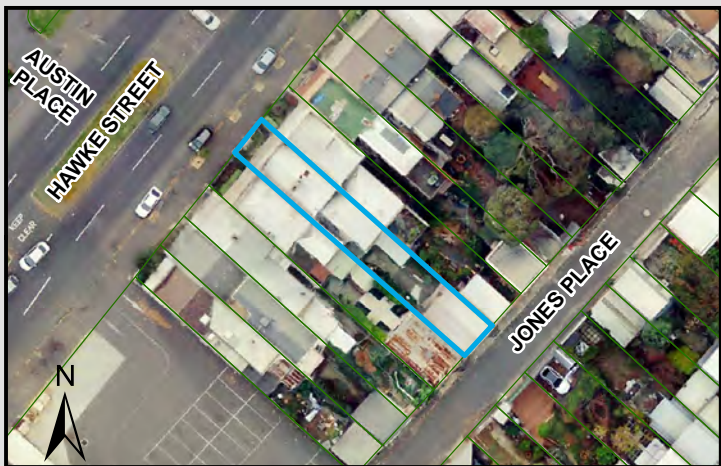
PROJECT: 18113718
DATE: 27 FEB 2019
DRAWN: TPC
CHECKED: IMK



Information contained on this drawing is the copyright of Golder Associates Pty. Ltd. Unauthorised use or reproduction of this plan either wholly or in part without written permission infringes copyright. © Golder Associates Pty. Ltd.

CoM Property ID: 104722

47 Hawke Street WEST MELBOURNE VIC 3003



LEGEND

 Parcel Boundary



Action Plan

EAO Recommendation

Do Not Apply EAO

EAO Comment

Site has not identified as being potentially contaminated in accordance with the Potentially Contaminated Land General Practice Note (DSE, 2005)

Site Use Summary

Current Land Use
Residential

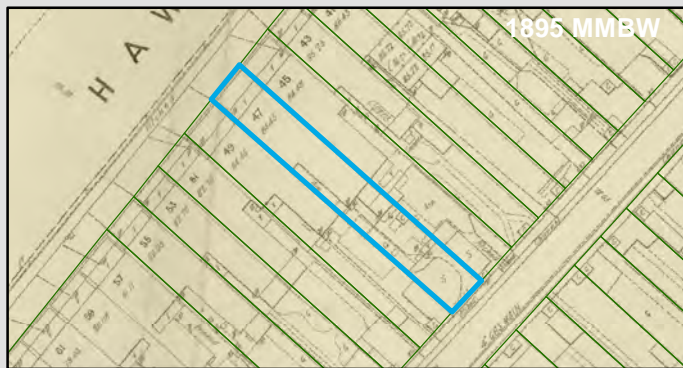
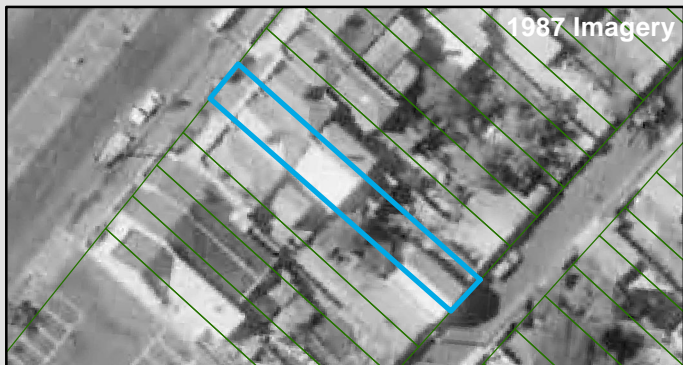
Historic Land Use
Residential

Key Information Supporting EAO Decision

Research indicates this site has currently and previously been used for residential purposes.

Additional Considerations

Resources used to make decision



Resources used to make decision

Site inspection, Historical aerial photographs (1968/9 & 1987)

WEST MELBOURNE EAO - AMENDMENT C309 -
WEST MELBOURNE STRUCTURE PLAN:
PRELIMINARY LAND CONTAMINATION ASSESSMENT

CITY OF MELBOURNE

GIS ID: 8686

COPYRIGHT

Aerial Imagery copyright
City of Melbourne

0 5 10 20 30 40 50 metres

SCALE (at A4) (BUILDING MAP) 1:1,000
DATUM GDA 94, PROJECTION MGA Zone 55

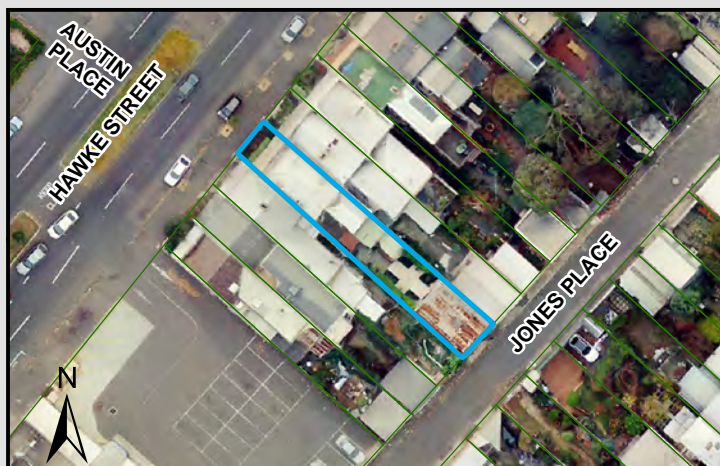
PROJECT: 18113718
DATE: 27 FEB 2019
DRAWN: TPC
CHECKED: IMK



GOLDER

CoM Property ID: 104723

49 Hawke Street WEST MELBOURNE VIC 3003



LEGEND

 Parcel Boundary



Action Plan

EAO Recommendation

Do Not Apply EAO

EAO Comment

Site has not identified as being potentially contaminated in accordance with the Potentially Contaminated Land General Practice Note (DSE, 2005)

Site Use Summary

Current Land Use
Residential

Historic Land Use
Residential

Key Information Supporting EAO Decision

Research indicates this site has currently and previously been used for residential purposes.

Additional Considerations

Resources used to make decision



Resources used to make decision

Site inspection, Historical aerial photographs (1968/9 & 1987)

WEST MELBOURNE EAO - AMENDMENT C309 -
WEST MELBOURNE STRUCTURE PLAN:
PRELIMINARY LAND CONTAMINATION ASSESSMENT

CITY OF MELBOURNE

GIS ID: 8687

COPYRIGHT

Aerial Imagery copyright
City of Melbourne

0 5 10 20 30 40 50 metres

SCALE (at A4) (BUILDING MAP) 1:1,000
DATUM GDA 94, PROJECTION MGA Zone 55

PROJECT: 18113718
DATE: 27 FEB 2019
DRAWN: TPC
CHECKED: IMK



Information contained on this drawing is the copyright of Golder Associates Pty. Ltd. Unauthorised use or reproduction of this plan either wholly or in part without written permission infringes copyright. © Golder Associates Pty. Ltd.

CoM Property ID: 104724

51 Hawke Street WEST MELBOURNE VIC 3003



LEGEND

 Parcel Boundary



Action Plan

EAO Recommendation

Do Not Apply EAO

EAO Comment

Site has not identified as being potentially contaminated in accordance with the Potentially Contaminated Land General Practice Note (DSE, 2005)

Site Use Summary

Current Land Use
Residential

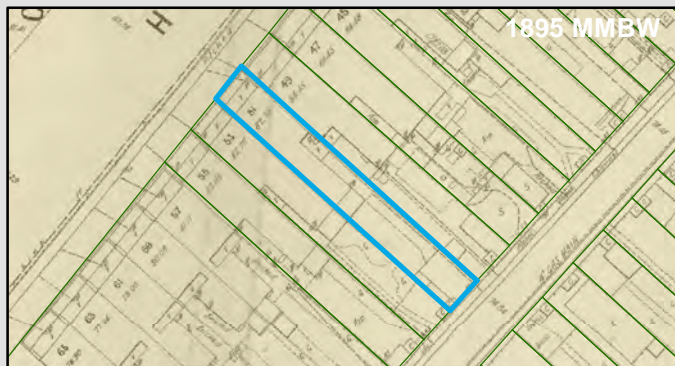
Historic Land Use
Residential

Key Information Supporting EAO Decision

Research indicates this site has currently and previously been used for residential purposes.

Additional Considerations

Resources used to make decision



Resources used to make decision

Site inspection, Historical aerial photographs (1968/9 & 1987)

WEST MELBOURNE EAO - AMENDMENT C309 -
WEST MELBOURNE STRUCTURE PLAN:
PRELIMINARY LAND CONTAMINATION ASSESSMENT

CITY OF MELBOURNE

GIS ID: 8688

COPYRIGHT

Aerial Imagery copyright
City of Melbourne

0 5 10 20 30 40 50 metres

SCALE (at A4) (BUILDING MAP) 1:1,000
DATUM GDA 94, PROJECTION MGA Zone 55

PROJECT: 18113718
DATE: 27 FEB 2019
DRAWN: TPC
CHECKED: IMK



Information contained on this drawing is the copyright of Golder Associates Pty. Ltd. Unauthorised use or reproduction of this plan either wholly or in part without written permission infringes copyright. © Golder Associates Pty. Ltd.

CoM Property ID: 104725

53 Hawke Street WEST MELBOURNE VIC 3003



LEGEND

 Parcel Boundary



Action Plan

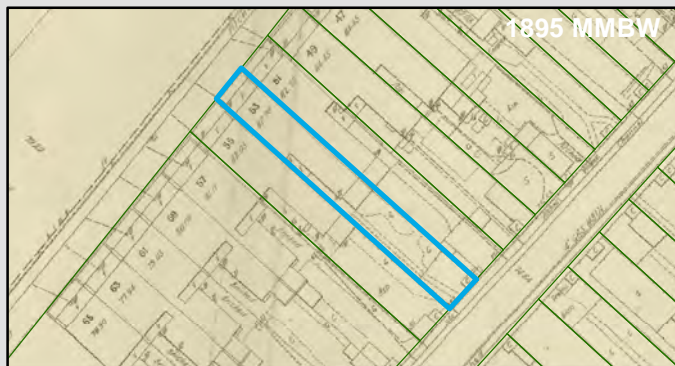
EAO Recommendation

Do Not Apply EAO

EAO Comment

Site has not identified as being potentially contaminated in accordance with the Potentially Contaminated Land General Practice Note (DSE, 2005)

Resources used to make decision



Site Use Summary

Current Land Use
Residential

Historic Land Use
Residential

Key Information Supporting EAO Decision

Research indicates this site has currently and previously been used for residential purposes.

Additional Considerations

Resources used to make decision

Site inspection, Historical aerial photographs (1968/9 & 1987)

WEST MELBOURNE EAO - AMENDMENT C309 -
WEST MELBOURNE STRUCTURE PLAN:
PRELIMINARY LAND CONTAMINATION ASSESSMENT

CITY OF MELBOURNE

GIS ID: 8689

COPYRIGHT

Aerial Imagery copyright
City of Melbourne

0 5 10 20 30 40 50 metres

SCALE (at A4) (BUILDING MAP) 1:1,000
DATUM GDA 94, PROJECTION MGA Zone 55

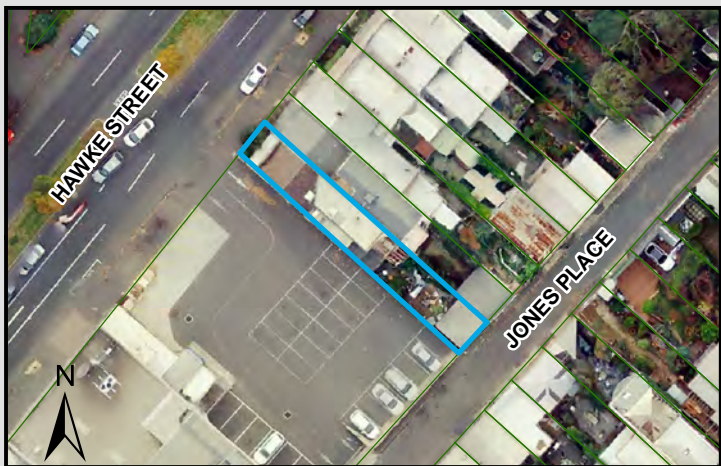
PROJECT: 18113718
DATE: 27 FEB 2019
DRAWN: TPC
CHECKED: IMK



Information contained on this drawing is the copyright of Golder Associates Pty. Ltd. Unauthorised use or reproduction of this plan either wholly or in part without written permission infringes copyright. © Golder Associates Pty. Ltd.

CoM Property ID: 104726

55 Hawke Street WEST MELBOURNE VIC 3003



LEGEND

 Parcel Boundary



Action Plan

EAO Recommendation

Do Not Apply EAO

EAO Comment

Site has not identified as being potentially contaminated in accordance with the Potentially Contaminated Land General Practice Note (DSE, 2005)

Site Use Summary

Current Land Use
Residential

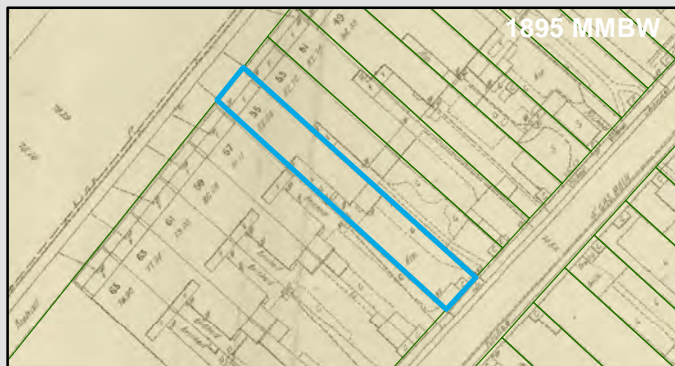
Historic Land Use
Residential

Key Information Supporting EAO Decision

Research indicates this site has currently and previously been used for residential purposes.

Additional Considerations

Resources used to make decision



Resources used to make decision

Site inspection, Historical aerial photographs (1968/9 & 1987)

WEST MELBOURNE EAO - AMENDMENT C309 -
WEST MELBOURNE STRUCTURE PLAN:
PRELIMINARY LAND CONTAMINATION ASSESSMENT

CITY OF MELBOURNE

GIS ID: 8690

COPYRIGHT

Aerial Imagery copyright
City of Melbourne

0 5 10 20 30 40 50 metres

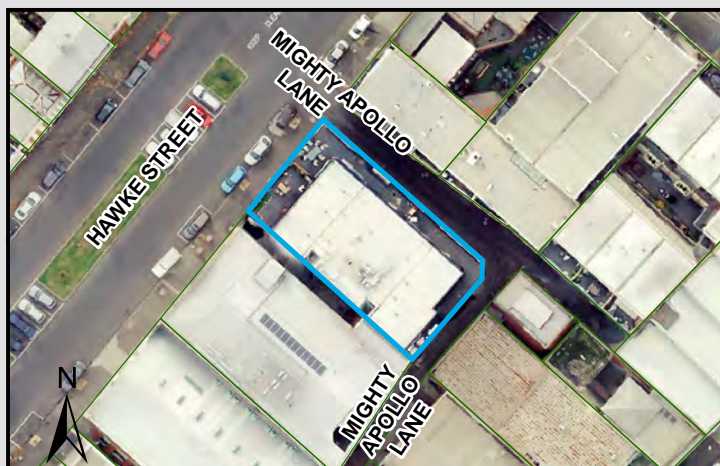
SCALE (at A4) (BUILDING MAP) 1:1,000
DATUM GDA 94, PROJECTION MGA Zone 55

PROJECT: 18113718
DATE: 27 FEB 2019
DRAWN: TPC
CHECKED: IMK



CoM Property ID: 104727

101-107 Hawke Street WEST MELBOURNE VIC 3003



LEGEND

 Parcel Boundary

Action Plan

EAO Recommendation

Do Not Apply EAO

EAO Comment

Site has not identified as being potentially contaminated in accordance with the Potentially Contaminated Land General Practice Note (DSE, 2005)

Site Use Summary

Current Land Use
Residential

Historic Land Use
Residential

Key Information Supporting EAO Decision

Research indicates this site has currently and previously been used for residential purposes.

Additional Considerations

Resources used to make decision



Resources used to make decision

West Melbourne Heritage Review Appendix 2 (May 2016), Site inspection, Historical aerial photographs (1968/9 & 1987)

WEST MELBOURNE EAO - AMENDMENT C309 -
WEST MELBOURNE STRUCTURE PLAN:
PRELIMINARY LAND CONTAMINATION ASSESSMENT

CITY OF MELBOURNE

GIS ID: 6591

COPYRIGHT

Aerial Imagery copyright
City of Melbourne

0 5 10 20 30 40 50 metres

SCALE (at A4) (BUILDING MAP) 1:1,100
DATUM GDA 94, PROJECTION MGA Zone 55

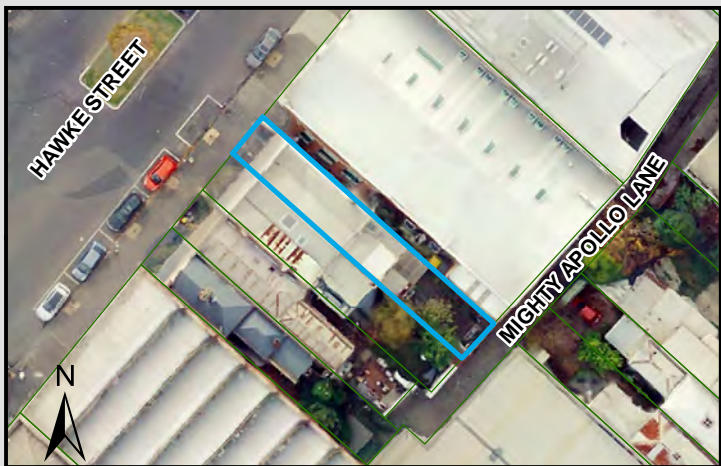
PROJECT: 18113718
DATE: 27 FEB 2019
DRAWN: TPC
CHECKED: IMK



Information contained on this drawing is the copyright of Golder Associates Pty. Ltd. Unauthorised use or reproduction of this plan either wholly or in part without written permission infringes copyright. © Golder Associates Pty. Ltd.

CoM Property ID: 104730

127 Hawke Street WEST MELBOURNE VIC 3003



LEGEND

 Parcel Boundary

Action Plan

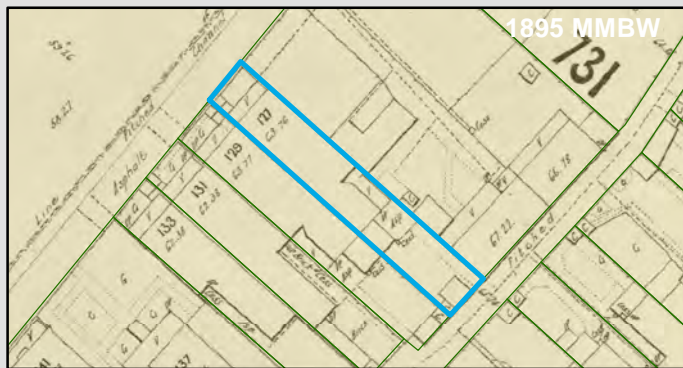
EAO Recommendation

Do Not Apply EAO

EAO Comment

Site has not identified as being potentially contaminated in accordance with the Potentially Contaminated Land General Practice Note (DSE, 2005)

Resources used to make decision



Site Use Summary

Current Land Use
Residential

Historic Land Use
Residential

Key Information Supporting EAO Decision

Research indicates this site has currently and previously been used for residential purposes.

Additional Considerations

Resources used to make decision

Site inspection, Historical aerial photographs (1968/9 & 1987)

WEST MELBOURNE EAO - AMENDMENT C309 -
WEST MELBOURNE STRUCTURE PLAN:
PRELIMINARY LAND CONTAMINATION ASSESSMENT

CITY OF MELBOURNE

GIS ID: 6594

COPYRIGHT

Aerial Imagery copyright
City of Melbourne

0 4 8 16 24 32 40 metres

SCALE (at A4) (BUILDING MAP) 1:800
DATUM GDA 94, PROJECTION MGA Zone 55

PROJECT: 18113718
DATE: 27 FEB 2019
DRAWN: TPC
CHECKED: IMK



Information contained on this drawing is the copyright of Golder Associates Pty. Ltd. Unauthorised use or reproduction of this plan either wholly or in part without written permission infringes copyright. © Golder Associates Pty. Ltd.

CoM Property ID: 104731

129 Hawke Street WEST MELBOURNE VIC 3003



LEGEND

 Parcel Boundary



Action Plan

EAO Recommendation

Do Not Apply EAO

EAO Comment

Site has not identified as being potentially contaminated in accordance with the Potentially Contaminated Land General Practice Note (DSE, 2005)

Site Use Summary

Current Land Use
Residential

Historic Land Use
Residential

Key Information Supporting EAO Decision

Research indicates this site has currently and previously been used for residential purposes.

Additional Considerations

Resources used to make decision



Resources used to make decision

Site inspection, Historical aerial photographs (1968/9 & 1987)

WEST MELBOURNE EAO - AMENDMENT C309 -
WEST MELBOURNE STRUCTURE PLAN:
PRELIMINARY LAND CONTAMINATION ASSESSMENT

CITY OF MELBOURNE

GIS ID: 6595

COPYRIGHT

Aerial Imagery copyright
City of Melbourne

0 4 8 16 24 32 40 metres

SCALE (at A4) (BUILDING MAP) 1:800
DATUM GDA 94, PROJECTION MGA Zone 55

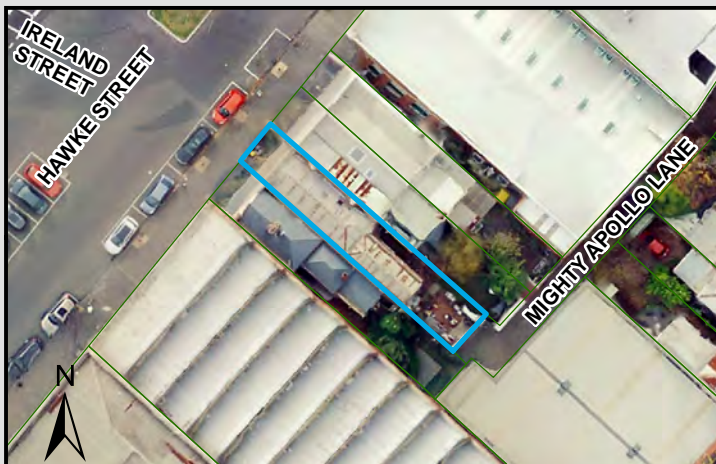
PROJECT: 18113718
DATE: 27 FEB 2019
DRAWN: TPC
CHECKED: IMK



Information contained on this drawing is the copyright of Golder Associates Pty. Ltd. Unauthorised use or reproduction of this plan either wholly or in part without written permission infringes copyright. © Golder Associates Pty. Ltd.

CoM Property ID: 104732

131 Hawke Street WEST MELBOURNE VIC 3003



LEGEND

 Parcel Boundary

Action Plan

EAO Recommendation

Do Not Apply EAO

EAO Comment

Site has not identified as being potentially contaminated in accordance with the Potentially Contaminated Land General Practice Note (DSE, 2005)

Site Use Summary

Current Land Use
Residential

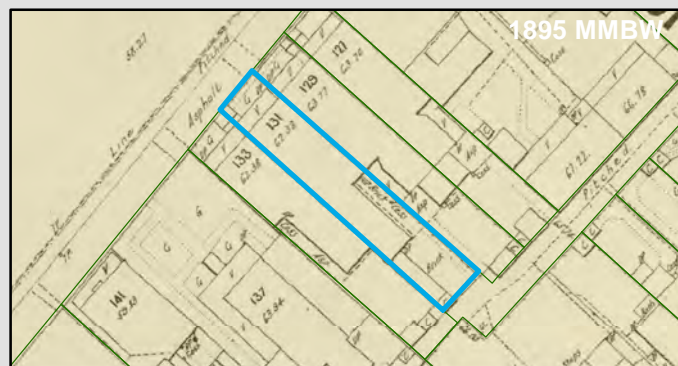
Historic Land Use
Residential

Key Information Supporting EAO Decision

Research indicates this site has currently and previously been used for residential purposes.

Additional Considerations

Resources used to make decision



Resources used to make decision

Site inspection, Historical aerial photographs (1968/9 & 1987)

WEST MELBOURNE EAO - AMENDMENT C309 -
WEST MELBOURNE STRUCTURE PLAN:
PRELIMINARY LAND CONTAMINATION ASSESSMENT

CITY OF MELBOURNE

GIS ID: 6596

COPYRIGHT

Aerial Imagery copyright
City of Melbourne

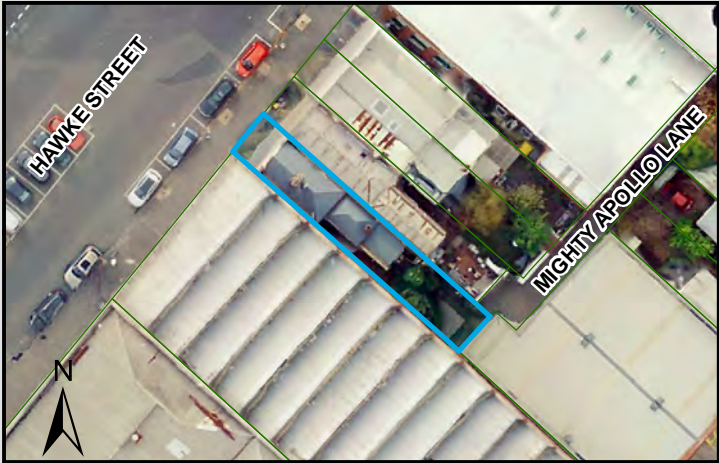
0 4 8 16 24 32 40 metres

SCALE (at A4) (BUILDING MAP) 1:800
DATUM GDA 94, PROJECTION MGA Zone 55


PROJECT: 18113718
DATE: 27 FEB 2019
DRAWN: TPC
CHECKED: IMK



Information contained on this drawing is the copyright of Golder Associates Pty. Ltd. Unauthorised use or reproduction of this plan either wholly or in part without written permission infringes copyright. © Golder Associates Pty. Ltd.



LEGEND

 Parcel Boundary

Action Plan

EAO Recommendation

Do Not Apply EAO

EAO Comment

Site has not identified as being potentially contaminated in accordance with the Potentially Contaminated Land General Practice Note (DSE, 2005)

Site Use Summary

Current Land Use
Residential

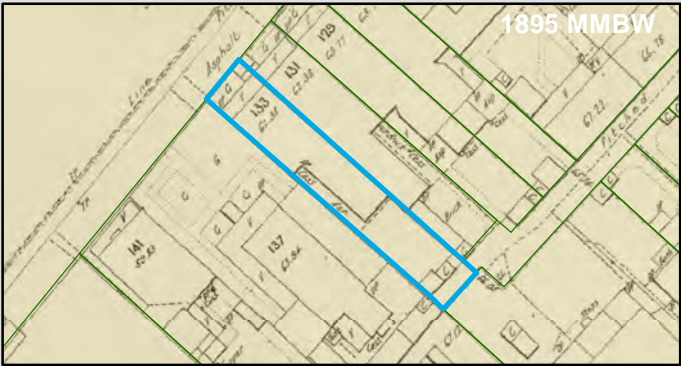
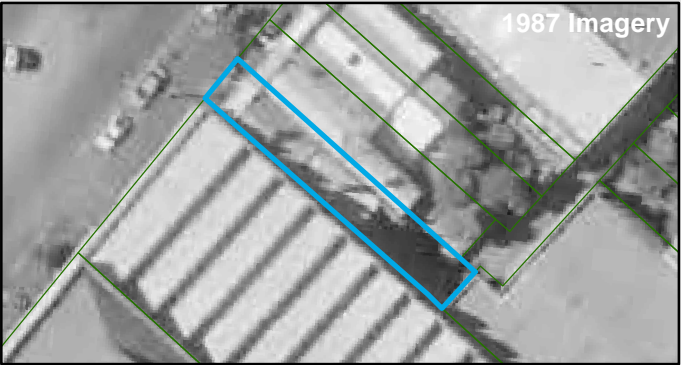
Historic Land Use
Residential

Key Information Supporting EAO Decision

Research indicates this site has currently and previously been used for residential purposes.

Additional Considerations

Resources used to make decision



Resources used to make decision
Site inspection, Historical aerial photographs (1968/9 & 1987)

WEST MELBOURNE EAO - AMENDMENT C309 -
WEST MELBOURNE STRUCTURE PLAN:
PRELIMINARY LAND CONTAMINATION ASSESSMENT

CITY OF MELBOURNE

GIS ID: 6597

COPYRIGHT
Aerial Imagery copyright
City of Melbourne

0 4 8 16 24 32 40 metres
SCALE (at A4) (BUILDING MAP) 1:800
DATUM GDA 94, PROJECTION MGA Zone 55
PROJECT: 18113718
DATE: 27 FEB 2019
DRAWN: TPC
CHECKED: IMK



Information contained on this drawing is the copyright of Golder Associates Pty. Ltd. Unauthorised use or reproduction of this plan either wholly or in part without written permission infringes copyright. © Golder Associates Pty. Ltd.

CoM Property ID: 104734

173-175 Hawke Street WEST MELBOURNE VIC 3003



LEGEND

 Parcel Boundary



Action Plan

EAO Recommendation

Do Not Apply EAO

EAO Comment

Site has not identified as being potentially contaminated in accordance with the Potentially Contaminated Land General Practice Note (DSE, 2005)

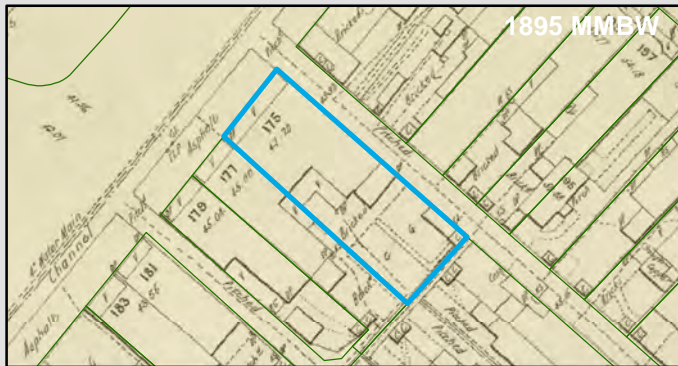
Resources used to make decision



Site Use Summary

Current Land Use
Residential

Historic Land Use
Residential



Key Information Supporting EAO Decision

Research indicates this site has currently and previously been used for residential purposes.

Additional Considerations

Resources used to make decision

Site inspection, Historical aerial photographs (1968/9 & 1987)

WEST MELBOURNE EAO - AMENDMENT C309 -
WEST MELBOURNE STRUCTURE PLAN:
PRELIMINARY LAND CONTAMINATION ASSESSMENT

CITY OF MELBOURNE

GIS ID: 6575

COPYRIGHT

Aerial Imagery copyright
City of Melbourne

0 4 8 16 24 32 40 metres

SCALE (at A4) (BUILDING MAP) 1:800
DATUM GDA 94, PROJECTION MGA Zone 55

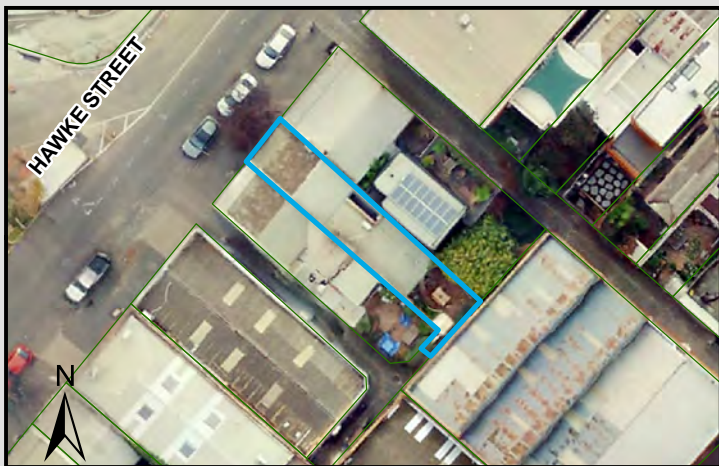
PROJECT: 18113718
DATE: 27 FEB 2019
DRAWN: TPC
CHECKED: IMK



Information contained on this drawing is the copyright of Golder Associates Pty. Ltd. Unauthorised use or reproduction of this plan either wholly or in part without written permission infringes copyright. © Golder Associates Pty. Ltd.

CoM Property ID: 104735

177 Hawke Street WEST MELBOURNE VIC 3003



LEGEND

 Parcel Boundary



Action Plan

EAO Recommendation

Do Not Apply EAO

EAO Comment

Site has not identified as being potentially contaminated in accordance with the Potentially Contaminated Land General Practice Note (DSE, 2005)

Site Use Summary

Current Land Use
Residential

Historic Land Use
Residential

Key Information Supporting EAO Decision

Research indicates this site has currently and previously been used for residential purposes.

Additional Considerations

Resources used to make decision



Resources used to make decision

Site inspection, Historical aerial photographs (1968/9 & 1987)

WEST MELBOURNE EAO - AMENDMENT C309 -
WEST MELBOURNE STRUCTURE PLAN:
PRELIMINARY LAND CONTAMINATION ASSESSMENT

CITY OF MELBOURNE

GIS ID: 6576

COPYRIGHT

Aerial Imagery copyright
City of Melbourne

0 3.5 7 14 21 28 35 metres

SCALE (at A4) (BUILDING MAP) 1:700
DATUM GDA 94, PROJECTION MGA Zone 55

PROJECT: 18113718
DATE: 27 FEB 2019
DRAWN: TPC
CHECKED: IMK



Information contained on this drawing is the copyright of Golder Associates Pty. Ltd. Unauthorised use or reproduction of this plan either wholly or in part without written permission infringes copyright. © Golder Associates Pty. Ltd.

CoM Property ID: 104736

179 Hawke Street WEST MELBOURNE VIC 3003



LEGEND

 Parcel Boundary



Action Plan

EAO Recommendation

Do Not Apply EAO

EAO Comment

Site has not identified as being potentially contaminated in accordance with the Potentially Contaminated Land General Practice Note (DSE, 2005)

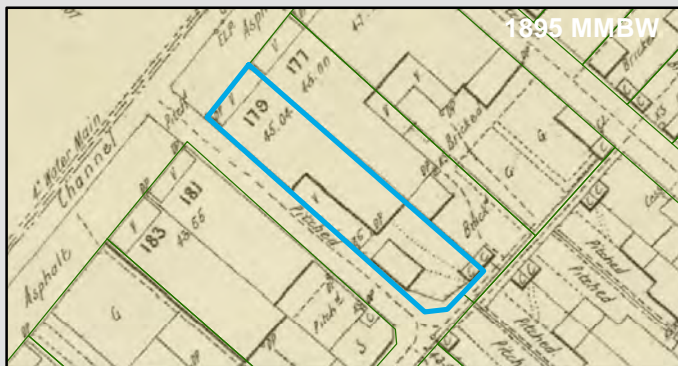
Resources used to make decision



Site Use Summary

Current Land Use
Residential

Historic Land Use
Residential



Key Information Supporting EAO Decision

Research indicates this site has currently and previously been used for residential purposes.

Additional Considerations

Resources used to make decision

Site inspection, Historical aerial photographs (1968/9 & 1987)

WEST MELBOURNE EAO - AMENDMENT C309 -
WEST MELBOURNE STRUCTURE PLAN:
PRELIMINARY LAND CONTAMINATION ASSESSMENT

CITY OF MELBOURNE

GIS ID: 6577

COPYRIGHT

Aerial Imagery copyright
City of Melbourne

0 3 6 12 18 24 30 metres

SCALE (at A4) (BUILDING MAP) 1:600
DATUM GDA 94, PROJECTION MGA Zone 55

PROJECT: 18113718
DATE: 27 FEB 2019
DRAWN: TPC
CHECKED: IMK

