

Information contained on this drawing is the copyright of Golder Associates Pty. Ltd. Unauthorised use or reproduction of this plan either wholly or in part without written permission infringes copyright. © Golder Associates Pty. Ltd.

CoM Property ID: 106571

19 Miller Street WEST MELBOURNE VIC 3003



#### LEGEND

 Parcel Boundary

#### Action Plan

##### EAO Recommendation

**Do Not Apply EAO**

##### EAO Comment

Site has not identified as being potentially contaminated in accordance with the Potentially Contaminated Land General Practice Note (DSE, 2005)

#### Site Use Summary

**Current Land Use**  
Residential

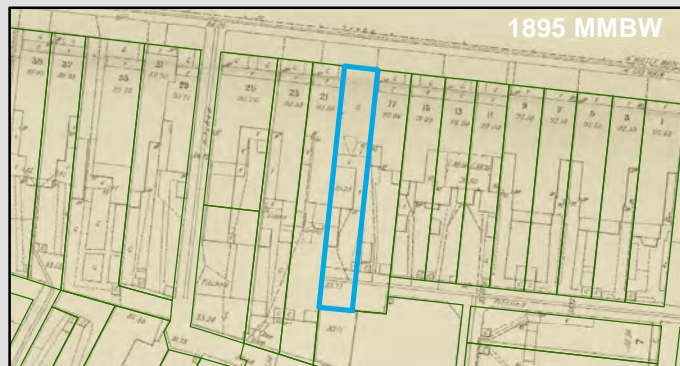
**Historic Land Use**  
Residential

#### Key Information Supporting EAO Decision

Research indicates this site has currently and previously been used for residential purposes.

#### Additional Considerations

#### Resources used to make decision



#### Resources used to make decision

Site inspection, Historical aerial photographs (1968/9 & 1987)

WEST MELBOURNE EAO - AMENDMENT C309 -  
WEST MELBOURNE STRUCTURE PLAN:  
PRELIMINARY LAND CONTAMINATION ASSESSMENT

CITY OF MELBOURNE

**GIS ID: 8618**

#### COPYRIGHT

Aerial Imagery copyright  
City of Melbourne

0 5 10 20 30 40 50 metres

**SCALE (at A4) (BUILDING MAP) 1:1,200**  
DATUM GDA 94, PROJECTION MGA Zone 55

**PROJECT: 18113718**  
**DATE: 27 FEB 2019**  
**DRAWN: TPC**  
**CHECKED: IMK**



Information contained on this drawing is the copyright of Golder Associates Pty. Ltd. Unauthorised use or reproduction of this plan either wholly or in part without written permission infringes copyright. © Golder Associates Pty. Ltd.

CoM Property ID: 106572

21 Miller Street WEST MELBOURNE VIC 3003



#### LEGEND

 Parcel Boundary



#### Action Plan

##### EAO Recommendation

**Do Not Apply EAO**

##### EAO Comment

Site has not identified as being potentially contaminated in accordance with the Potentially Contaminated Land General Practice Note (DSE, 2005)

#### Site Use Summary

**Current Land Use**  
Residential

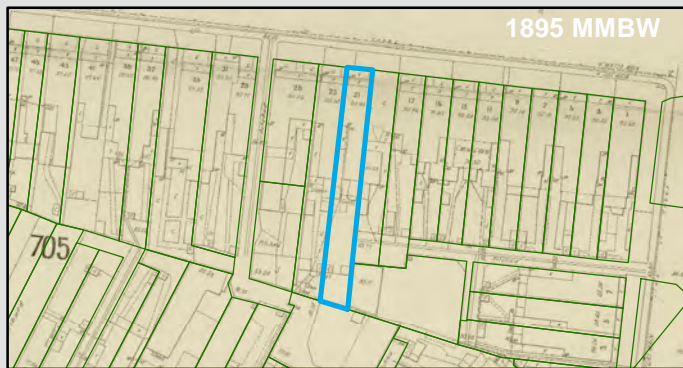
**Historic Land Use**  
Residential

#### Key Information Supporting EAO Decision

Research indicates this site has currently and previously been used for residential purposes.

#### Additional Considerations

#### Resources used to make decision



#### Resources used to make decision

Site inspection, Historical aerial photographs (1968/9 & 1987)

WEST MELBOURNE EAO - AMENDMENT C309 -  
WEST MELBOURNE STRUCTURE PLAN:  
PRELIMINARY LAND CONTAMINATION ASSESSMENT

CITY OF MELBOURNE

**GIS ID: 8619**

#### COPYRIGHT

Aerial Imagery copyright  
City of Melbourne

0 5 10 20 30 40 50 metres

**SCALE (at A4) (BUILDING MAP) 1:1,500**  
DATUM GDA 94, PROJECTION MGA Zone 55

**PROJECT: 18113718**  
**DATE: 27 FEB 2019**  
**DRAWN: TPC**  
**CHECKED: IMK**





Information contained on this drawing is the copyright of Golder Associates Pty. Ltd. Unauthorised use or reproduction of this plan either wholly or in part without written permission infringes copyright. © Golder Associates Pty. Ltd.

CoM Property ID: 106573

23 Miller Street WEST MELBOURNE VIC 3003



#### LEGEND

 Parcel Boundary



#### Action Plan

##### EAO Recommendation

**Do Not Apply EAO**

##### EAO Comment

Site has not identified as being potentially contaminated in accordance with the Potentially Contaminated Land General Practice Note (DSE, 2005)

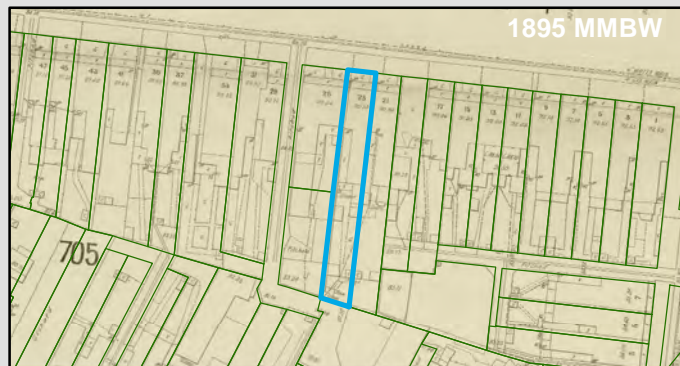
#### Resources used to make decision



#### Site Use Summary

**Current Land Use**  
Residential

**Historic Land Use**  
Residential



#### Key Information Supporting EAO Decision

Research indicates this site has currently and previously been used for residential purposes.

#### Additional Considerations

#### Resources used to make decision

Site inspection, Historical aerial photographs (1968/9 & 1987)

WEST MELBOURNE EAO - AMENDMENT C309 -  
WEST MELBOURNE STRUCTURE PLAN:  
PRELIMINARY LAND CONTAMINATION ASSESSMENT

CITY OF MELBOURNE

**GIS ID: 8620**

#### COPYRIGHT

Aerial Imagery copyright  
City of Melbourne

0 5 10 20 30 40 50 metres

**SCALE (at A4) (BUILDING MAP) 1:1,500**  
DATUM GDA 94, PROJECTION MGA Zone 55


**PROJECT: 18113718**  
**DATE: 27 FEB 2019**  
**DRAWN: TPC**  
**CHECKED: IMK**



Information contained on this drawing is the copyright of Golder Associates Pty. Ltd. Unauthorised use or reproduction of this plan either wholly or in part without written permission infringes copyright. © Golder Associates Pty. Ltd.



LEGEND

 Parcel Boundary

Action Plan

EAO Recommendation

Do Not Apply EAO

EAO Comment

Site has not identified as being potentially contaminated in accordance with the Potentially Contaminated Land General Practice Note (DSE, 2005)

Site Use Summary

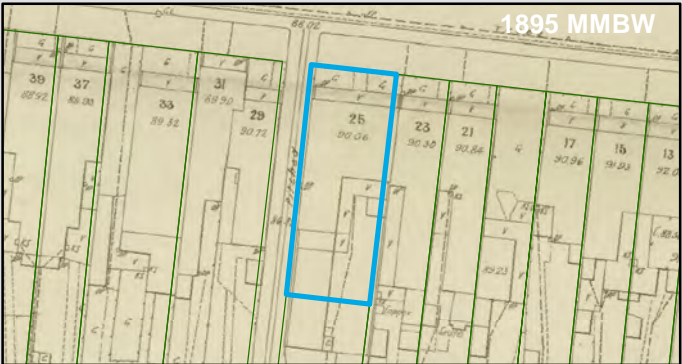
Current Land Use	Historic Land Use
Residential	Residential

Key Information Supporting EAO Decision

Research indicates this site has currently and previously been used for residential purposes.

Additional Considerations

Resources used to make decision



Resources used to make decision

Site inspection, Historical aerial photographs (1968/9 & 1987)

WEST MELBOURNE EAO - AMENDMENT C309 -  
WEST MELBOURNE STRUCTURE PLAN:  
PRELIMINARY LAND CONTAMINATION ASSESSMENT

CITY OF MELBOURNE

GIS ID: 8621

COPYRIGHT

Aerial Imagery copyright  
City of Melbourne

0 4 8 16 24 32 40 metres

SCALE (at A4) (BUILDING MAP) 1:800  
DATUM GDA 94, PROJECTION MGA Zone 55

PROJECT: 18113718  
DATE: 27 FEB 2019  
DRAWN: TPC  
CHECKED: IMK





CoM Property ID: 106575

2 Miller Place WEST MELBOURNE VIC 3003



#### LEGEND

 Parcel Boundary

#### Action Plan

##### EAO Recommendation

**Do Not Apply EAO**

##### EAO Comment

Site has not identified as being potentially contaminated in accordance with the Potentially Contaminated Land General Practice Note (DSE, 2005)

#### Site Use Summary

**Current Land Use**  
Residential

**Historic Land Use**  
Residential

##### Key Information Supporting EAO Decision

Research indicates this site has currently and previously been used for residential purposes.

##### Additional Considerations

#### Resources used to make decision



##### Resources used to make decision

West Melbourne Heritage Review Appendix 2 (May 2016), Site inspection, Historical aerial photographs (1968/9 & 1987)

WEST MELBOURNE EAO - AMENDMENT C309 -  
WEST MELBOURNE STRUCTURE PLAN:  
PRELIMINARY LAND CONTAMINATION ASSESSMENT

CITY OF MELBOURNE

**GIS ID: 8622**

##### COPYRIGHT

Aerial Imagery copyright  
City of Melbourne

0 3.5 7 14 21 28 35 metres

**SCALE (at A4) (BUILDING MAP) 1:700**  
DATUM GDA 94, PROJECTION MGA Zone 55

**PROJECT: 18113718**  
**DATE: 27 FEB 2019**  
**DRAWN: TPC**  
**CHECKED: IMK**



CoM Property ID: 106576

29-31 Miller Street WEST MELBOURNE VIC 3003



#### LEGEND

 Parcel Boundary



#### Action Plan

##### EAO Recommendation

**Do Not Apply EAO**

##### EAO Comment

Site has not identified as being potentially contaminated in accordance with the Potentially Contaminated Land General Practice Note (DSE, 2005)

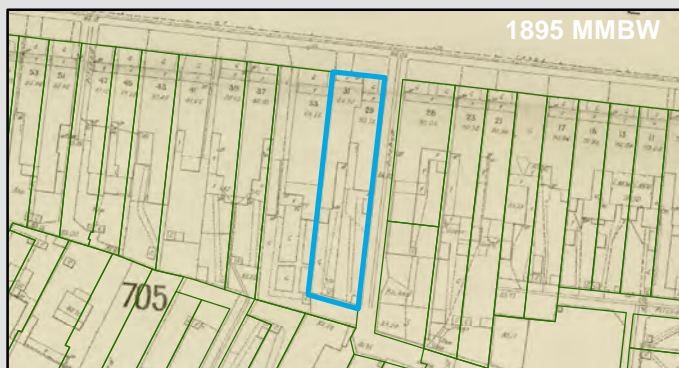
#### Resources used to make decision



#### Site Use Summary

**Current Land Use**  
Residential

**Historic Land Use**  
Residential



#### Key Information Supporting EAO Decision

Research indicates this site has currently and previously been used for residential purposes.

#### Additional Considerations

#### Resources used to make decision

Site inspection, Historical aerial photographs (1968/9 & 1987)

WEST MELBOURNE EAO - AMENDMENT C309 -  
WEST MELBOURNE STRUCTURE PLAN:  
PRELIMINARY LAND CONTAMINATION ASSESSMENT

CITY OF MELBOURNE

**GIS ID: 8623**

#### COPYRIGHT

Aerial Imagery copyright  
City of Melbourne

0 5 10 20 30 40 50 metres

**SCALE (at A4) (BUILDING MAP) 1:1,300**  
DATUM GDA 94, PROJECTION MGA Zone 55

**PROJECT: 18113718**  
**DATE: 27 FEB 2019**  
**DRAWN: TPC**  
**CHECKED: IMK**





Information contained on this drawing is the copyright of Golder Associates Pty. Ltd. Unauthorised use or reproduction of this plan either wholly or in part without written permission infringes copyright. © Golder Associates Pty. Ltd.

CoM Property ID: 106577

33-35 Miller Street WEST MELBOURNE VIC 3003



#### LEGEND

 Parcel Boundary



#### Action Plan

##### EAO Recommendation

**Do Not Apply EAO**

##### EAO Comment

Site has not identified as being potentially contaminated in accordance with the Potentially Contaminated Land General Practice Note (DSE, 2005)

#### Resources used to make decision

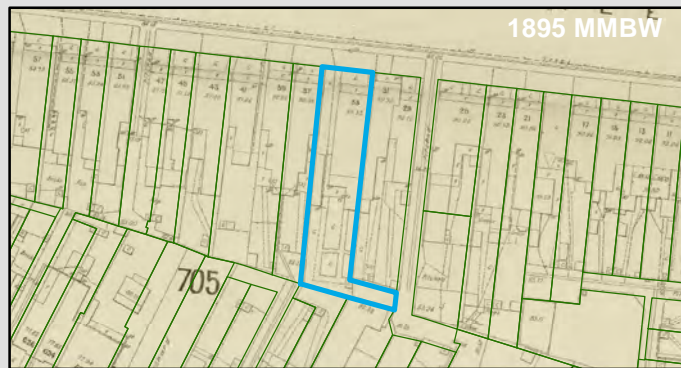


1987 Imagery

#### Site Use Summary

**Current Land Use**  
Residential

**Historic Land Use**  
Residential



1895 MMBW

#### Key Information Supporting EAO Decision

Research indicates this site has currently and previously been used for residential purposes.

#### Additional Considerations

#### Resources used to make decision

Site inspection, Historical aerial photographs (1968/9 & 1987)

WEST MELBOURNE EAO - AMENDMENT C309 -  
WEST MELBOURNE STRUCTURE PLAN:  
PRELIMINARY LAND CONTAMINATION ASSESSMENT

CITY OF MELBOURNE

GIS ID: 8624

#### COPYRIGHT

Aerial Imagery copyright  
City of Melbourne

0 5 10 20 30 40 50 metres

SCALE (at A4) (BUILDING MAP) 1:1,400  
DATUM GDA 94, PROJECTION MGA Zone 55


PROJECT: 18113718  
DATE: 27 FEB 2019  
DRAWN: TPC  
CHECKED: IMK



Information contained on this drawing is the copyright of Golder Associates Pty. Ltd. Unauthorised use or reproduction of this plan either wholly or in part without written permission infringes copyright. © Golder Associates Pty. Ltd.



LEGEND

 Parcel Boundary

Action Plan

EAO Recommendation

Do Not Apply EAO

EAO Comment

Site has not identified as being potentially contaminated in accordance with the Potentially Contaminated Land General Practice Note (DSE, 2005)

Site Use Summary

Current Land Use  
Residential

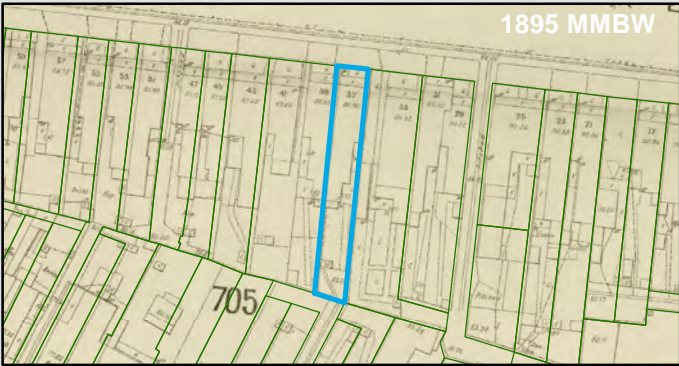
Historic Land Use  
Residential

Key Information Supporting EAO Decision

Research indicates this site has currently and previously been used for residential purposes.

Additional Considerations

Resources used to make decision



Resources used to make decision

Site inspection, Historical aerial photographs (1968/9 & 1987)

WEST MELBOURNE EAO - AMENDMENT C309 -  
WEST MELBOURNE STRUCTURE PLAN:  
PRELIMINARY LAND CONTAMINATION ASSESSMENT

CITY OF MELBOURNE

GIS ID: 8625

COPYRIGHT  
Aerial Imagery copyright  
City of Melbourne

0 5 10 20 30 40 50 metres  
SCALE (at A4) (BUILDING MAP) 1:1,300  
DATUM GDA 94, PROJECTION MGA Zone 55  
PROJECT: 18113718  
DATE: 27 FEB 2019  
DRAWN: TPC  
CHECKED: IMK





Information contained on this drawing is the copyright of Golder Associates Pty. Ltd. Unauthorised use or reproduction of this plan either wholly or in part without written permission infringes copyright. © Golder Associates Pty. Ltd.

CoM Property ID: 106580

39-41 Miller Street WEST MELBOURNE VIC 3003



#### LEGEND

 Parcel Boundary



#### Action Plan

##### EAO Recommendation

**Do Not Apply EAO**

##### EAO Comment

Site has not identified as being potentially contaminated in accordance with the Potentially Contaminated Land General Practice Note (DSE, 2005)

#### Site Use Summary

**Current Land Use**  
Residential

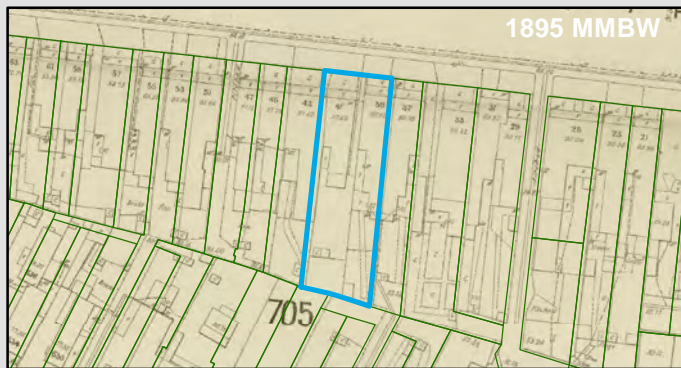
**Historic Land Use**  
Residential

##### Key Information Supporting EAO Decision

Research indicates this site has currently and previously been used for residential purposes.

##### Additional Considerations

#### Resources used to make decision



##### Resources used to make decision

Site inspection, Historical aerial photographs (1968/9 & 1987)

WEST MELBOURNE EAO - AMENDMENT C309 -  
WEST MELBOURNE STRUCTURE PLAN:  
PRELIMINARY LAND CONTAMINATION ASSESSMENT

CITY OF MELBOURNE

**GIS ID: 8626**

##### COPYRIGHT

Aerial Imagery copyright  
City of Melbourne

0 5 10 20 30 40 50 metres  
**SCALE (at A4) (BUILDING MAP) 1:1,300**  
DATUM GDA 94, PROJECTION MGA Zone 55

**PROJECT: 18113718**  
**DATE: 27 FEB 2019**  
**DRAWN: TPC**  
**CHECKED: IMK**



Information contained on this drawing is the copyright of Golder Associates Pty. Ltd. Unauthorised use or reproduction of this plan either wholly or in part without written permission infringes copyright. © Golder Associates Pty. Ltd.

CoM Property ID: 106581

43 Miller Street WEST MELBOURNE VIC 3003



#### LEGEND

 Parcel Boundary



#### Action Plan

##### EAO Recommendation

**Do Not Apply EAO**

##### EAO Comment

Site has not identified as being potentially contaminated in accordance with the Potentially Contaminated Land General Practice Note (DSE, 2005)

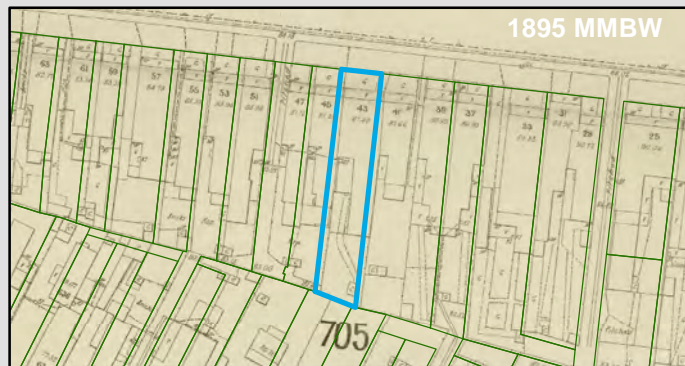
#### Resources used to make decision



#### Site Use Summary

**Current Land Use**  
Residential

**Historic Land Use**  
Residential



#### Key Information Supporting EAO Decision

Research indicates this site has currently and previously been used for residential purposes.

#### Additional Considerations

#### Resources used to make decision

Site inspection, Historical aerial photographs (1968/9 & 1987)

WEST MELBOURNE EAO - AMENDMENT C309 -  
WEST MELBOURNE STRUCTURE PLAN:  
PRELIMINARY LAND CONTAMINATION ASSESSMENT

CITY OF MELBOURNE

**GIS ID: 8627**

#### COPYRIGHT

Aerial Imagery copyright  
City of Melbourne

0 5 10 20 30 40 50 metres

**SCALE (at A4) (BUILDING MAP) 1:1,200**  
DATUM GDA 94, PROJECTION MGA Zone 55

**PROJECT: 18113718**  
**DATE: 27 FEB 2019**  
**DRAWN: TPC**  
**CHECKED: IMK**





Information contained on this drawing is the copyright of Golder Associates Pty. Ltd. Unauthorised use or reproduction of this plan either wholly or in part without written permission infringes copyright. © Golder Associates Pty. Ltd.

CoM Property ID: 106583

51 Miller Street WEST MELBOURNE VIC 3003



LEGEND

 Parcel Boundary



Action Plan

EAO Recommendation

**Do Not Apply EAO**

EAO Comment

Site has not identified as being potentially contaminated in accordance with the Potentially Contaminated Land General Practice Note (DSE, 2005)

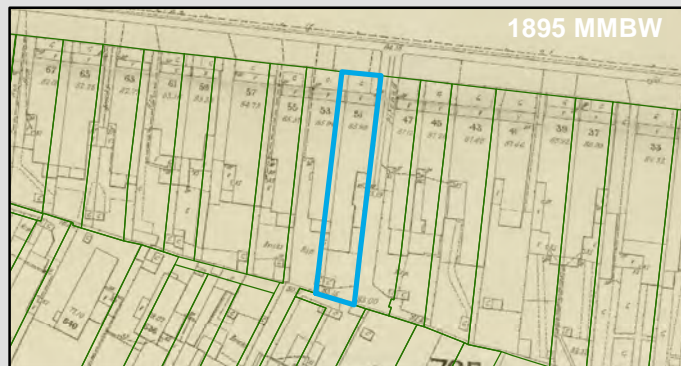
Resources used to make decision



Site Use Summary

**Current Land Use**  
Residential

**Historic Land Use**  
Residential



Key Information Supporting EAO Decision

Research indicates this site has currently and previously been used for residential purposes.

Additional Considerations

Resources used to make decision

Site inspection, Historical aerial photographs (1968/9 & 1987)

WEST MELBOURNE EAO - AMENDMENT C309 -  
WEST MELBOURNE STRUCTURE PLAN:  
PRELIMINARY LAND CONTAMINATION ASSESSMENT

CITY OF MELBOURNE

**GIS ID: 8628**

COPYRIGHT

Aerial Imagery copyright  
City of Melbourne

0 5 10 20 30 40 50 metres

SCALE (at A4) (BUILDING MAP) 1:1,100  
DATUM GDA 94, PROJECTION MGA Zone 55

PROJECT: 18113718  
DATE: 27 FEB 2019  
DRAWN: TPC  
CHECKED: IMK



**GOLDER**

CoM Property ID: 106584

53 Miller Street WEST MELBOURNE VIC 3003



#### LEGEND

 Parcel Boundary

#### Action Plan

##### EAO Recommendation

**Do Not Apply EAO**

##### EAO Comment

Site has not identified as being potentially contaminated in accordance with the Potentially Contaminated Land General Practice Note (DSE, 2005)

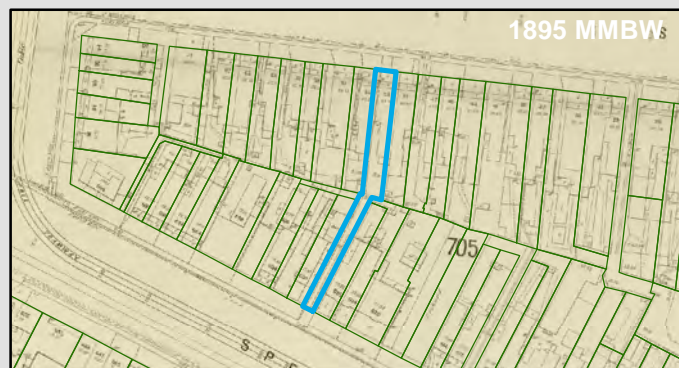
#### Resources used to make decision



#### Site Use Summary

**Current Land Use**  
Residential

**Historic Land Use**  
Residential



##### Key Information Supporting EAO Decision

Research indicates this site has currently and previously been used for residential purposes.

##### Additional Considerations

##### Resources used to make decision

Site inspection, Historical aerial photographs (1968/9 & 1987)

WEST MELBOURNE EAO - AMENDMENT C309 -  
WEST MELBOURNE STRUCTURE PLAN:  
PRELIMINARY LAND CONTAMINATION ASSESSMENT

CITY OF MELBOURNE

**GIS ID: 8629**

##### COPYRIGHT

Aerial Imagery copyright  
City of Melbourne

0 5 10 20 30 40 50 metres

**SCALE (at A4) (BUILDING MAP) 1:1,900**  
DATUM GDA 94, PROJECTION MGA Zone 55

**PROJECT: 18113718**  
**DATE: 27 FEB 2019**  
**DRAWN: TPC**  
**CHECKED: IMK**





CoM Property ID: 106585

55 Miller Street WEST MELBOURNE VIC 3003



#### LEGEND

 Parcel Boundary



#### Action Plan

##### EAO Recommendation

**Do Not Apply EAO**

##### EAO Comment

Site has not identified as being potentially contaminated in accordance with the Potentially Contaminated Land General Practice Note (DSE, 2005)

#### Site Use Summary

**Current Land Use**  
Residential

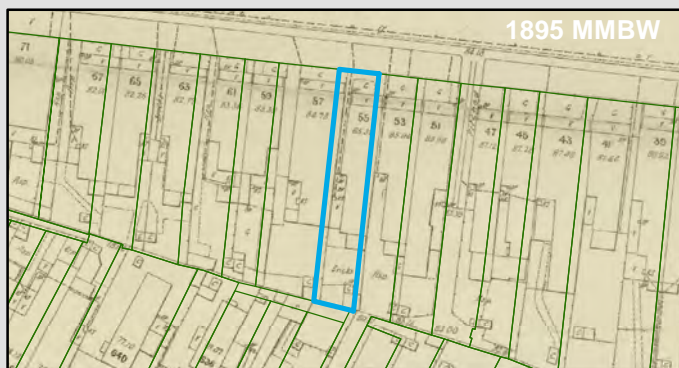
**Historic Land Use**  
Residential

#### Key Information Supporting EAO Decision

Research indicates this site has currently and previously been used for residential purposes.

#### Additional Considerations

#### Resources used to make decision



#### Resources used to make decision

Site inspection, Historical aerial photographs (1968/9 & 1987)

WEST MELBOURNE EAO - AMENDMENT C309 -  
WEST MELBOURNE STRUCTURE PLAN:  
PRELIMINARY LAND CONTAMINATION ASSESSMENT

CITY OF MELBOURNE

**GIS ID: 8630**

#### COPYRIGHT

Aerial Imagery copyright  
City of Melbourne

0 5 10 20 30 40 50 metres

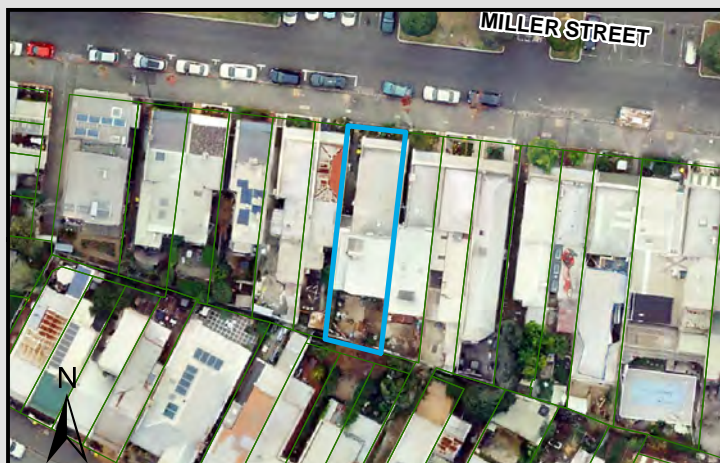
**SCALE (at A4) (BUILDING MAP) 1:1,000**  
DATUM GDA 94, PROJECTION MGA Zone 55

**PROJECT: 18113718**  
**DATE: 27 FEB 2019**  
**DRAWN: TPC**  
**CHECKED: IMK**



CoM Property ID: 106586

57 Miller Street WEST MELBOURNE VIC 3003



#### LEGEND

 Parcel Boundary

#### Action Plan

##### EAO Recommendation

**Do Not Apply EAO**

##### EAO Comment

Site has not identified as being potentially contaminated in accordance with the Potentially Contaminated Land General Practice Note (DSE, 2005)

#### Site Use Summary

**Current Land Use**  
Residential

**Historic Land Use**  
Residential

#### Key Information Supporting EAO Decision

Research indicates this site has currently and previously been used for residential purposes.

#### Additional Considerations

#### Resources used to make decision



#### Resources used to make decision

Site inspection, Historical aerial photographs (1968/9 & 1987)

WEST MELBOURNE EAO - AMENDMENT C309 -  
WEST MELBOURNE STRUCTURE PLAN:  
PRELIMINARY LAND CONTAMINATION ASSESSMENT

CITY OF MELBOURNE

**GIS ID: 8631**

#### COPYRIGHT

Aerial Imagery copyright  
City of Melbourne

0 5 10 20 30 40 50 metres

**SCALE (at A4) (BUILDING MAP) 1:1,000**  
DATUM GDA 94, PROJECTION MGA Zone 55

**PROJECT: 18113718**  
**DATE: 27 FEB 2019**  
**DRAWN: TPC**  
**CHECKED: IMK**





Information contained on this drawing is the copyright of Golder Associates Pty. Ltd. Unauthorised use or reproduction of this plan either wholly or in part without written permission infringes copyright. © Golder Associates Pty. Ltd.

CoM Property ID: 106587

59 Miller Street WEST MELBOURNE VIC 3003



LEGEND

 Parcel Boundary

Action Plan

EAO Recommendation

**Do Not Apply EAO**

EAO Comment

Site has not identified as being potentially contaminated in accordance with the Potentially Contaminated Land General Practice Note (DSE, 2005)

Site Use Summary

**Current Land Use**  
Residential

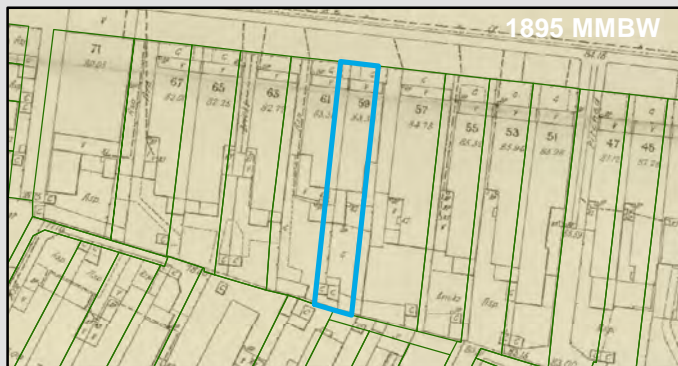
**Historic Land Use**  
Residential

Key Information Supporting EAO Decision

Research indicates this site has currently and previously been used for residential purposes.

Additional Considerations

Resources used to make decision



Resources used to make decision

Site inspection, Historical aerial photographs (1968/9 & 1987)

WEST MELBOURNE EAO - AMENDMENT C309 -  
WEST MELBOURNE STRUCTURE PLAN:  
PRELIMINARY LAND CONTAMINATION ASSESSMENT

CITY OF MELBOURNE

**GIS ID: 8632**

COPYRIGHT

Aerial Imagery copyright  
City of Melbourne

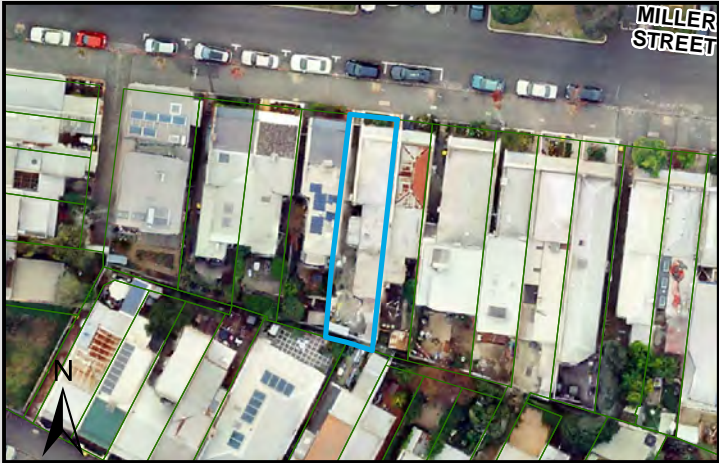
0 4.5 9 18 27 36 45 metres

**SCALE (at A4) (BUILDING MAP) 1:900**  
DATUM GDA 94, PROJECTION MGA Zone 55

**PROJECT: 18113718**  
**DATE: 27 FEB 2019**  
**DRAWN: TPC**  
**CHECKED: IMK**



Information contained on this drawing is the copyright of Golder Associates Pty. Ltd. Unauthorised use or reproduction of this plan either wholly or in part without written permission infringes copyright. © Golder Associates Pty. Ltd.



LEGEND

Parcel Boundary

Action Plan

EAO Recommendation

Do Not Apply EAO

EAO Comment

Site has not identified as being potentially contaminated in accordance with the Potentially Contaminated Land General Practice Note (DSE, 2005)

Site Use Summary

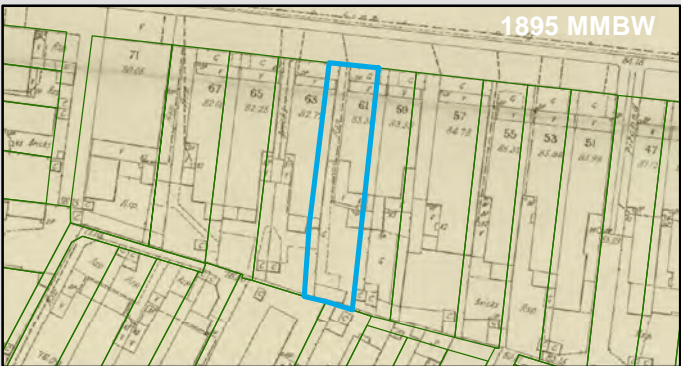
Current Land Use	Historic Land Use
Residential	Residential

Key Information Supporting EAO Decision

Research indicates this site has currently and previously been used for residential purposes.

Additional Considerations

Resources used to make decision



Resources used to make decision

Site inspection, Historical aerial photographs (1968/9 & 1987)

WEST MELBOURNE EAO - AMENDMENT C309 -  
WEST MELBOURNE STRUCTURE PLAN:  
PRELIMINARY LAND CONTAMINATION ASSESSMENT

CITY OF MELBOURNE

GIS ID: 8633

COPYRIGHT

Aerial Imagery copyright  
City of Melbourne

0 4.5 9 18 27 36 45 metres

SCALE (at A4) (BUILDING MAP) 1:900  
DATUM GDA 94, PROJECTION MGA Zone 55

PROJECT: 18113718  
DATE: 27 FEB 2019  
DRAWN: TPC  
CHECKED: IMK

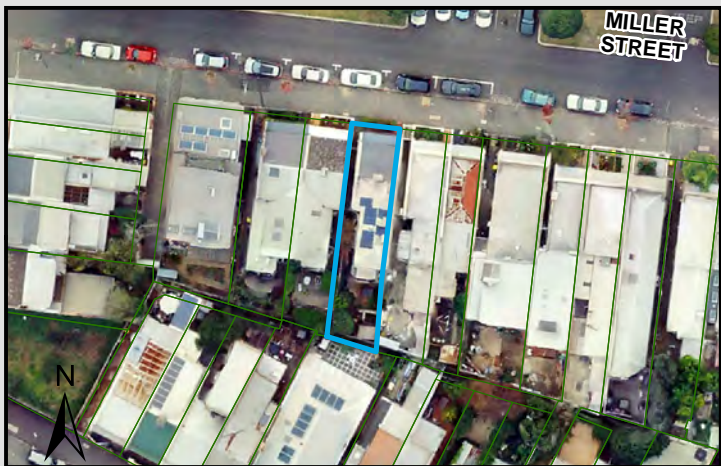




Information contained on this drawing is the copyright of Golder Associates Pty. Ltd. Unauthorised use or reproduction of this plan either wholly or in part without written permission infringes copyright. © Golder Associates Pty. Ltd.

CoM Property ID: 106589

63 Miller Street WEST MELBOURNE VIC 3003



#### LEGEND

 Parcel Boundary



#### Action Plan

##### EAO Recommendation

**Do Not Apply EAO**

##### EAO Comment

Site has not identified as being potentially contaminated in accordance with the Potentially Contaminated Land General Practice Note (DSE, 2005)

#### Site Use Summary

**Current Land Use**  
Residential

**Historic Land Use**  
Residential

##### Key Information Supporting EAO Decision

Research indicates this site has currently and previously been used for residential purposes.

##### Additional Considerations

#### Resources used to make decision



##### Resources used to make decision

Site inspection, Historical aerial photographs (1968/9 & 1987)

WEST MELBOURNE EAO - AMENDMENT C309 -  
WEST MELBOURNE STRUCTURE PLAN:  
PRELIMINARY LAND CONTAMINATION ASSESSMENT

CITY OF MELBOURNE

**GIS ID: 8634**

##### COPYRIGHT

Aerial Imagery copyright  
City of Melbourne

0 4.5 9 18 27 36 45 metres

**SCALE (at A4) (BUILDING MAP) 1:900**  
DATUM GDA 94, PROJECTION MGA Zone 55

**PROJECT: 18113718**  
**DATE: 27 FEB 2019**  
**DRAWN: TPC**  
**CHECKED: IMK**





## LEGEND

 Parcel Boundary

## Action Plan

## EAO Recommendation

**Do Not Apply EAO**

## EAO Comment

Site has not identified as being potentially contaminated in accordance with the Potentially Contaminated Land General Practice Note (DSE, 2005)

## Site Use Summary

**Current Land Use**  
Residential**Historic Land Use**  
Residential

## Key Information Supporting EAO Decision

Research indicates this site has currently and previously been used for residential purposes.

## Additional Considerations

## Resources used to make decision



## Resources used to make decision

Site inspection, Historical aerial photographs (1968/9 & 1987)

WEST MELBOURNE EAO - AMENDMENT C309 -  
WEST MELBOURNE STRUCTURE PLAN:  
PRELIMINARY LAND CONTAMINATION ASSESSMENT

CITY OF MELBOURNE

GIS ID: 8635

## COPYRIGHT

Aerial Imagery copyright  
City of Melbourne

0 5 10 20 30 40 50 metres

SCALE (at A4) (BUILDING MAP) 1:1,300  
DATUM GDA 94, PROJECTION MGA Zone 55

PROJECT: 18113718  
DATE: 27 FEB 2019  
DRAWN: TPC  
CHECKED: IMK

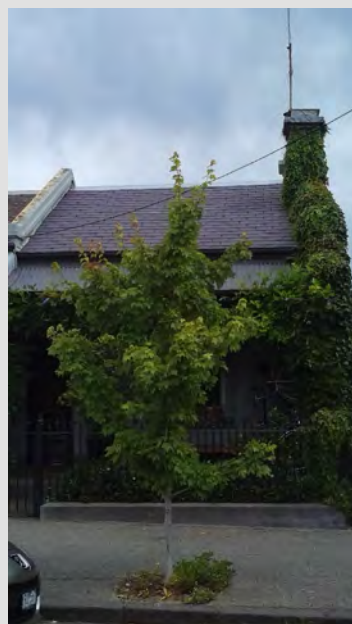
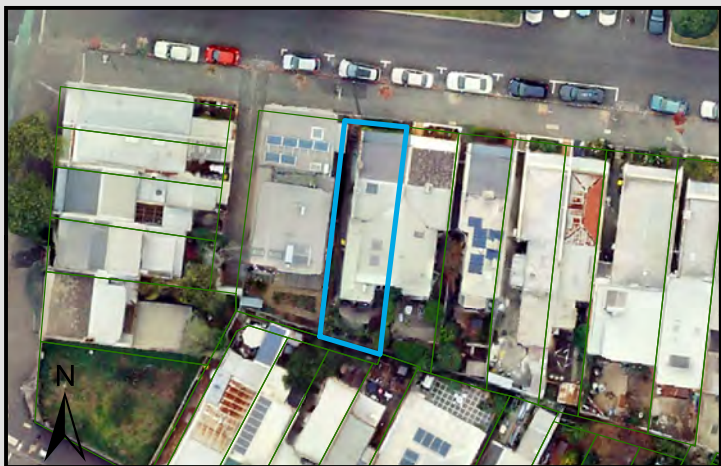




Information contained on this drawing is the copyright of Golder Associates Pty. Ltd. Unauthorised use or reproduction of this plan either wholly or in part without written permission infringes copyright. © Golder Associates Pty. Ltd.

CoM Property ID: 106591

67 Miller Street WEST MELBOURNE VIC 3003



LEGEND

 Parcel Boundary

Action Plan

EAO Recommendation

**Do Not Apply EAO**

EAO Comment

Site has not identified as being potentially contaminated in accordance with the Potentially Contaminated Land General Practice Note (DSE, 2005)

Site Use Summary

**Current Land Use**  
Residential

**Historic Land Use**  
Residential

Key Information Supporting EAO Decision

Research indicates this site has currently and previously been used for residential purposes.

Additional Considerations

Resources used to make decision



Resources used to make decision

Site inspection, Historical aerial photographs (1968/9 & 1987)

WEST MELBOURNE EAO - AMENDMENT C309 -  
WEST MELBOURNE STRUCTURE PLAN:  
PRELIMINARY LAND CONTAMINATION ASSESSMENT

CITY OF MELBOURNE

GIS ID: 8636

COPYRIGHT

Aerial Imagery copyright  
City of Melbourne

0 4 8 16 24 32 40 metres

SCALE (at A4) (BUILDING MAP) 1:800  
DATUM GDA 94, PROJECTION MGA Zone 55

PROJECT: 18113718  
DATE: 27 FEB 2019  
DRAWN: TPC  
CHECKED: IMK



Information contained on this drawing is the copyright of Golder Associates Pty. Ltd. Unauthorised use or reproduction of this plan either wholly or in part without written permission infringes copyright. © Golder Associates Pty. Ltd.

CoM Property ID: 106592

69-71 Miller Street WEST MELBOURNE VIC 3003



LEGEND

 Parcel Boundary



Action Plan

EAO Recommendation

**Do Not Apply EAO**

EAO Comment

Site has not identified as being potentially contaminated in accordance with the Potentially Contaminated Land General Practice Note (DSE, 2005)

Site Use Summary

**Current Land Use**  
Residential

**Historic Land Use**  
Residential

Key Information Supporting EAO Decision

Research indicates this site has currently and previously been used for residential purposes.

Additional Considerations

Resources used to make decision



Resources used to make decision

Site inspection, Historical aerial photographs (1968/9 & 1987)

WEST MELBOURNE EAO - AMENDMENT C309 -  
WEST MELBOURNE STRUCTURE PLAN:  
PRELIMINARY LAND CONTAMINATION ASSESSMENT

CITY OF MELBOURNE

**GIS ID: 8637**

COPYRIGHT

Aerial Imagery copyright  
City of Melbourne

0 4 8 16 24 32 40 metres

**SCALE (at A4) (BUILDING MAP) 1:800**  
DATUM GDA 94, PROJECTION MGA Zone 55

**PROJECT: 18113718**  
**DATE: 27 FEB 2019**  
**DRAWN: TPC**  
**CHECKED: IMK**





Information contained on this drawing is the copyright of Golder Associates Pty. Ltd. Unauthorised use or reproduction of this plan either wholly or in part without written permission infringes copyright. © Golder Associates Pty. Ltd.

CoM Property ID: 106593

Stawell Street Park 26-32 Stawell Street WEST MELBOURNE VIC 3003



#### LEGEND

 Parcel Boundary



#### Action Plan

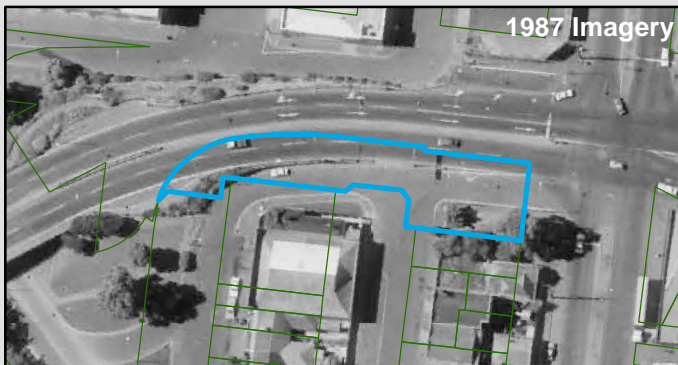
##### EAO Recommendation

**Do Not Apply EAO**

##### EAO Comment

Site has not identified as being potentially contaminated in accordance with the Potentially Contaminated Land General Practice Note (DSE, 2005)

#### Resources used to make decision



#### Site Use Summary

##### Current Land Use

Public land (schools, hospitals, parks)

##### Historic Land Use

Public land (schools, hospitals, parks)

#### Key Information Supporting EAO Decision

No current or previous potentially contaminating land uses identified on site.



#### Additional Considerations

#### Resources used to make decision

West Melbourne Heritage Review Appendix 2 (May 2016), Site inspection, Historical aerial photographs (1968/9 & 1987)

WEST MELBOURNE EAO - AMENDMENT C309 -  
WEST MELBOURNE STRUCTURE PLAN:  
PRELIMINARY LAND CONTAMINATION ASSESSMENT

CITY OF MELBOURNE

**GIS ID: 14314**

#### COPYRIGHT

Aerial Imagery copyright  
City of Melbourne

0 5 10 20 30 40 50 metres

**SCALE (at A4) (BUILDING MAP) 1:1,900**  
DATUM GDA 94, PROJECTION MGA Zone 55

**PROJECT: 18113718**  
**DATE: 27 FEB 2019**  
**DRAWN: TPC**  
**CHECKED: IMK**



Information contained on this drawing is the copyright of Golder Associates Pty. Ltd. Unauthorised use or reproduction of this plan either wholly or in part without written permission infringes copyright. © Golder Associates Pty. Ltd.

CoM Property ID: 106596

120-128 Miller Street WEST MELBOURNE VIC 3003



#### LEGEND

 Parcel Boundary



#### Action Plan

##### EAO Recommendation

**Do Not Apply EAO**

##### EAO Comment

Site has not identified as being potentially contaminated in accordance with the Potentially Contaminated Land General Practice Note (DSE, 2005)

#### Resources used to make decision



#### Site Use Summary

**Current Land Use**  
Commercial

**Historic Land Use**  
Commercial



#### Key Information Supporting EAO Decision

No current or previous potentially contaminating land uses identified on site.

#### Additional Considerations

Brick office building constructed in 1970.

#### Resources used to make decision

City of Melbourne interactive map (2019), West Melbourne Heritage Review Appendix 2 (May 2016), Site inspection, Historical aerial photographs (1968/9 & 1987)

WEST MELBOURNE EAO - AMENDMENT C309 -  
WEST MELBOURNE STRUCTURE PLAN:  
PRELIMINARY LAND CONTAMINATION ASSESSMENT

CITY OF MELBOURNE

**GIS ID: 14308**

#### COPYRIGHT

Aerial Imagery copyright  
City of Melbourne

0 5 10 20 30 40 50 metres

**SCALE (at A4) (BUILDING MAP) 1:1,200**  
DATUM GDA 94, PROJECTION MGA Zone 55

**PROJECT: 18113718**  
**DATE: 27 FEB 2019**  
**DRAWN: TPC**  
**CHECKED: IMK**





Information contained on this drawing is the copyright of Golder Associates Pty. Ltd. Unauthorised use or reproduction of this plan either wholly or in part without written permission infringes copyright. © Golder Associates Pty. Ltd.

CoM Property ID: 106597

114-118 Miller Street WEST MELBOURNE VIC 3003



LEGEND

 Parcel Boundary



Action Plan

EAO Recommendation

**Do Not Apply EAO**

EAO Comment

Site has not identified as being potentially contaminated in accordance with the Potentially Contaminated Land General Practice Note (DSE, 2005)

Site Use Summary

**Current Land Use**  
Commercial

**Historic Land Use**  
Commercial

Key Information Supporting EAO Decision

No current or previous potentially contaminating land uses identified on site.

Additional Considerations

Brick office building constructed in the 1980's.

Resources used to make decision



Resources used to make decision

City of Melbourne interactive map (2019), West Melbourne Heritage Review Appendix 2 (May 2016), Site inspection, Historical aerial photographs (1968/9 & 1987)

WEST MELBOURNE EAO - AMENDMENT C309 -  
WEST MELBOURNE STRUCTURE PLAN:  
PRELIMINARY LAND CONTAMINATION ASSESSMENT

CITY OF MELBOURNE

**GIS ID: 14309**

COPYRIGHT

Aerial Imagery copyright  
City of Melbourne

0 3.5 7 14 21 28 35 metres

**SCALE (at A4) (BUILDING MAP) 1:700**  
DATUM GDA 94, PROJECTION MGA Zone 55

**PROJECT: 18113718**  
**DATE: 27 FEB 2019**  
**DRAWN: TPC**  
**CHECKED: IMK**



CoM Property ID: 106598

112 Miller Street WEST MELBOURNE VIC 3003



#### LEGEND

 Parcel Boundary

#### Action Plan

##### EAO Recommendation

**Do Not Apply EAO**

##### EAO Comment

Site has not identified as being potentially contaminated in accordance with the Potentially Contaminated Land General Practice Note (DSE, 2005)

#### Site Use Summary

**Current Land Use**  
Commercial

**Historic Land Use**  
Residential

#### Key Information Supporting EAO Decision

No current or previous potentially contaminating land uses identified on site.

#### Additional Considerations

Originally O'Brien's grocer's shop and residence.

#### Resources used to make decision



#### Resources used to make decision

West Melbourne Heritage Review Appendix 2 (May 2016), Site inspection, Historical aerial photographs (1968/9 & 1987)

WEST MELBOURNE EAO - AMENDMENT C309 -  
WEST MELBOURNE STRUCTURE PLAN:  
PRELIMINARY LAND CONTAMINATION ASSESSMENT

CITY OF MELBOURNE

**GIS ID: 14310**

#### COPYRIGHT

Aerial Imagery copyright  
City of Melbourne

0 5 10 20 30 40 50 metres

**SCALE (at A4) (BUILDING MAP) 1:1,200**  
DATUM GDA 94, PROJECTION MGA Zone 55

**PROJECT: 18113718**  
**DATE: 27 FEB 2019**  
**DRAWN: TPC**  
**CHECKED: IMK**





Information contained on this drawing is the copyright of Golder Associates Pty. Ltd. Unauthorised use or reproduction of this plan either wholly or in part without written permission infringes copyright. © Golder Associates Pty. Ltd.

CoM Property ID: 106599

106-108 Miller Street WEST MELBOURNE VIC 3003



LEGEND

 Parcel Boundary



Action Plan

EAO Recommendation

**Do Not Apply EAO**

EAO Comment

Site has not identified as being potentially contaminated in accordance with the Potentially Contaminated Land General Practice Note (DSE, 2005)

Resources used to make decision



Site Use Summary

**Current Land Use**  
Residential

**Historic Land Use**  
Residential



Key Information Supporting EAO Decision

Research indicates this site has currently and previously been used for residential purposes.

Resources used to make decision

Site inspection, Historical aerial photographs (1968/9 & 1987)

Additional Considerations

WEST MELBOURNE EAO - AMENDMENT C309 -  
WEST MELBOURNE STRUCTURE PLAN:  
PRELIMINARY LAND CONTAMINATION ASSESSMENT

CITY OF MELBOURNE

GIS ID: 8508

COPYRIGHT

Aerial Imagery copyright  
City of Melbourne

0 5 10 20 30 40 50 metres

SCALE (at A4) (BUILDING MAP) 1:1,200  
DATUM GDA 94, PROJECTION MGA Zone 55

PROJECT: 18113718  
DATE: 27 FEB 2019  
DRAWN: TPC  
CHECKED: IMK



Information contained on this drawing is the copyright of Golder Associates Pty. Ltd. Unauthorised use or reproduction of this plan either wholly or in part without written permission infringes copyright. © Golder Associates Pty. Ltd.

CoM Property ID: 106601

96-100 Miller Street WEST MELBOURNE VIC 3003



#### LEGEND

 Parcel Boundary



#### Action Plan

##### EAO Recommendation

**Do Not Apply EAO**

##### EAO Comment

Site has not identified as being potentially contaminated in accordance with the Potentially Contaminated Land General Practice Note (DSE, 2005)

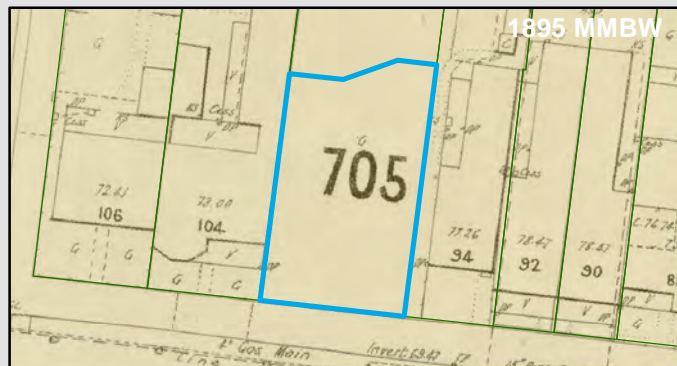
#### Resources used to make decision



#### Site Use Summary

**Current Land Use**  
Residential

**Historic Land Use**  
Residential



#### Key Information Supporting EAO Decision

Research indicates this site has currently and previously been used for residential purposes.

#### Additional Considerations

#### Resources used to make decision

West Melbourne Heritage Review Appendix 2 (May 2016), Site inspection, Historical aerial photographs (1968/9 & 1987)

WEST MELBOURNE EAO - AMENDMENT C309 -  
WEST MELBOURNE STRUCTURE PLAN:  
PRELIMINARY LAND CONTAMINATION ASSESSMENT

CITY OF MELBOURNE

**GIS ID: 8512**

#### COPYRIGHT

Aerial Imagery copyright  
City of Melbourne

0 3.5 7 14 21 28 35 metres

**SCALE (at A4) (BUILDING MAP) 1:700**  
DATUM GDA 94, PROJECTION MGA Zone 55

**PROJECT: 18113718**  
**DATE: 27 FEB 2019**  
**DRAWN: TPC**  
**CHECKED: IMK**





Information contained on this drawing is the copyright of Golder Associates Pty. Ltd. Unauthorised use or reproduction of this plan either wholly or in part without written permission infringes copyright. © Golder Associates Pty. Ltd.

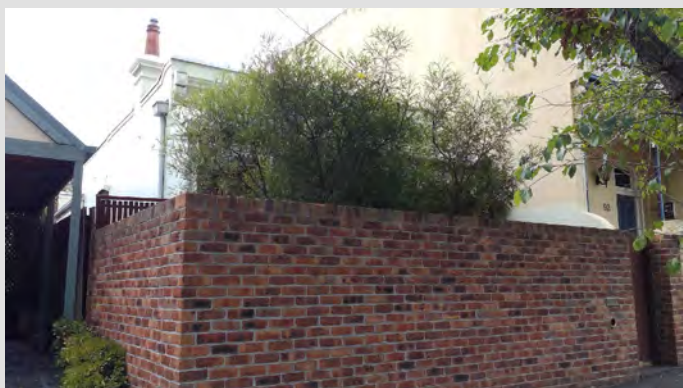
CoM Property ID: 106602

94 Miller Street WEST MELBOURNE VIC 3003



#### LEGEND

 Parcel Boundary



#### Action Plan

##### EAO Recommendation

**Do Not Apply EAO**

##### EAO Comment

Site has not identified as being potentially contaminated in accordance with the Potentially Contaminated Land General Practice Note (DSE, 2005)

#### Resources used to make decision



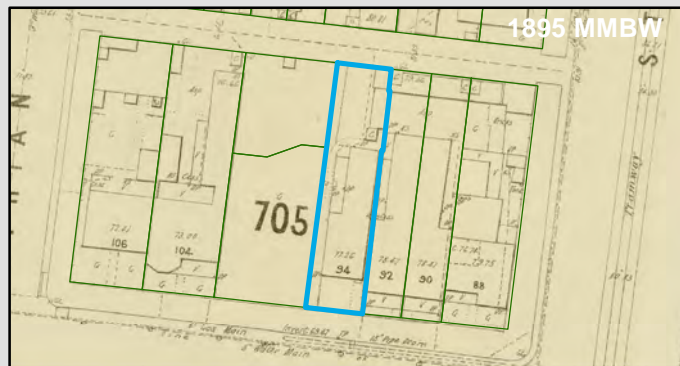
#### Site Use Summary

**Current Land Use**  
Residential

**Historic Land Use**  
Residential

#### Key Information Supporting EAO Decision

Research indicates this site has currently and previously been used for residential purposes.



#### Additional Considerations

#### Resources used to make decision

Site inspection, Historical aerial photographs (1968/9 & 1987)

WEST MELBOURNE EAO - AMENDMENT C309 -  
WEST MELBOURNE STRUCTURE PLAN:  
PRELIMINARY LAND CONTAMINATION ASSESSMENT

CITY OF MELBOURNE

**GIS ID: 8510**

#### COPYRIGHT

Aerial Imagery copyright  
City of Melbourne

0 5 10 20 30 40 50 metres

**SCALE (at A4) (BUILDING MAP) 1:1,100**  
DATUM GDA 94, PROJECTION MGA Zone 55

**PROJECT: 18113718**  
**DATE: 27 FEB 2019**  
**DRAWN: TPC**  
**CHECKED: IMK**



Information contained on this drawing is the copyright of Golder Associates Pty. Ltd. Unauthorised use or reproduction of this plan either wholly or in part without written permission infringes copyright. © Golder Associates Pty. Ltd.

CoM Property ID: 106606

58 Miller Street WEST MELBOURNE VIC 3003



#### LEGEND

 Parcel Boundary



#### Action Plan

##### EAO Recommendation

**Do Not Apply EAO**

##### EAO Comment

Site has not identified as being potentially contaminated in accordance with the Potentially Contaminated Land General Practice Note (DSE, 2005)

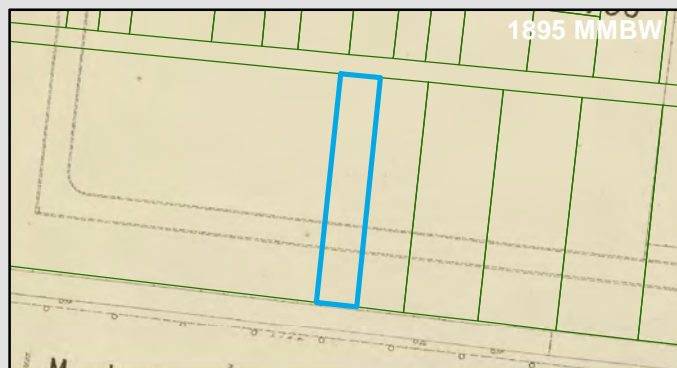
#### Resources used to make decision



#### Site Use Summary

**Current Land Use**  
Residential

**Historic Land Use**  
Residential



##### Key Information Supporting EAO Decision

Research indicates this site has currently and previously been used for residential purposes.

##### Additional Considerations

##### Resources used to make decision

Site inspection, Historical aerial photographs (1968/9 & 1987)

WEST MELBOURNE EAO - AMENDMENT C309 -  
WEST MELBOURNE STRUCTURE PLAN:  
PRELIMINARY LAND CONTAMINATION ASSESSMENT

CITY OF MELBOURNE

**GIS ID: 8580**

##### COPYRIGHT

Aerial Imagery copyright  
City of Melbourne

0 5 10 20 30 40 50 metres

**SCALE (at A4) (BUILDING MAP) 1:1,200**  
DATUM GDA 94, PROJECTION MGA Zone 55

**PROJECT: 18113718**  
**DATE: 27 FEB 2019**  
**DRAWN: TPC**  
**CHECKED: IMK**





CoM Property ID: 106607

56 Miller Street WEST MELBOURNE VIC 3003



#### LEGEND

 Parcel Boundary



#### Action Plan

##### EAO Recommendation

**Do Not Apply EAO**

##### EAO Comment

Site has not identified as being potentially contaminated in accordance with the Potentially Contaminated Land General Practice Note (DSE, 2005)

#### Site Use Summary

**Current Land Use**  
Residential

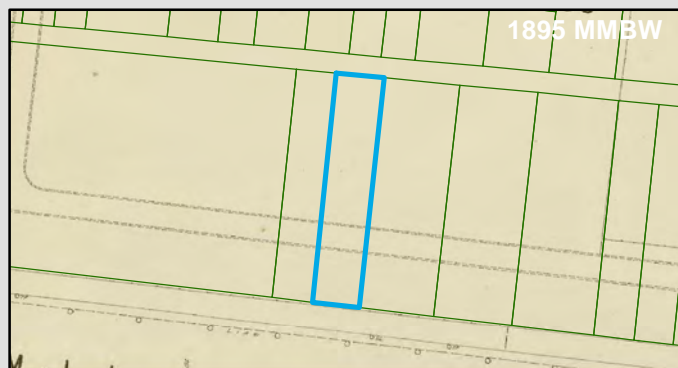
**Historic Land Use**  
Residential

##### Key Information Supporting EAO Decision

Research indicates this site has currently and previously been used for residential purposes.

##### Additional Considerations

#### Resources used to make decision



##### Resources used to make decision

Site inspection, Historical aerial photographs (1968/9 & 1987)

WEST MELBOURNE EAO - AMENDMENT C309 -  
WEST MELBOURNE STRUCTURE PLAN:  
PRELIMINARY LAND CONTAMINATION ASSESSMENT

CITY OF MELBOURNE

**GIS ID: 8581**

##### COPYRIGHT

Aerial Imagery copyright  
City of Melbourne

0 5 10 20 30 40 50 metres

**SCALE (at A4) (BUILDING MAP) 1:1,200**  
DATUM GDA 94, PROJECTION MGA Zone 55

**PROJECT: 18113718**  
**DATE: 27 FEB 2019**  
**DRAWN: TPC**  
**CHECKED: IMK**



CoM Property ID: 106608

48 Miller Street WEST MELBOURNE VIC 3003



#### LEGEND

 Parcel Boundary



#### Action Plan

##### EAO Recommendation

**Do Not Apply EAO**

##### EAO Comment

Site has not identified as being potentially contaminated in accordance with the Potentially Contaminated Land General Practice Note (DSE, 2005)

#### Resources used to make decision



#### Site Use Summary

**Current Land Use**  
Residential

**Historic Land Use**  
Residential



#### Key Information Supporting EAO Decision

Research indicates this site has currently and previously been used for residential purposes.

#### Additional Considerations

#### Resources used to make decision

Site inspection, Historical aerial photographs (1968/9 & 1987)

WEST MELBOURNE EAO - AMENDMENT C309 -  
WEST MELBOURNE STRUCTURE PLAN:  
PRELIMINARY LAND CONTAMINATION ASSESSMENT

CITY OF MELBOURNE

**GIS ID: 8582**

#### COPYRIGHT

Aerial Imagery copyright  
City of Melbourne

0 5 10 20 30 40 50 metres

**SCALE (at A4) (BUILDING MAP) 1:1,200**  
DATUM GDA 94, PROJECTION MGA Zone 55

**PROJECT: 18113718**  
**DATE: 27 FEB 2019**  
**DRAWN: TPC**  
**CHECKED: IMK**





CoM Property ID: 106609

46 Miller Street WEST MELBOURNE VIC 3003



#### LEGEND

 Parcel Boundary



#### Action Plan

##### EAO Recommendation

**Do Not Apply EAO**

##### EAO Comment

Site has not identified as being potentially contaminated in accordance with the Potentially Contaminated Land General Practice Note (DSE, 2005)

#### Resources used to make decision



#### Site Use Summary

**Current Land Use**  
Residential

**Historic Land Use**  
Residential

#### Key Information Supporting EAO Decision

Research indicates this site has currently and previously been used for residential purposes.



#### Additional Considerations

#### Resources used to make decision

Site inspection, Historical aerial photographs (1968/9 & 1987)

WEST MELBOURNE EAO - AMENDMENT C309 -  
WEST MELBOURNE STRUCTURE PLAN:  
PRELIMINARY LAND CONTAMINATION ASSESSMENT

CITY OF MELBOURNE

**GIS ID: 8583**

#### COPYRIGHT

Aerial Imagery copyright  
City of Melbourne

0 5 10 20 30 40 50 metres

**SCALE (at A4) (BUILDING MAP) 1:1,200**  
DATUM GDA 94, PROJECTION MGA Zone 55

**PROJECT: 18113718**  
**DATE: 27 FEB 2019**  
**DRAWN: TPC**  
**CHECKED: IMK**



CoM Property ID: 106610

44 Miller Street WEST MELBOURNE VIC 3003



#### LEGEND

 Parcel Boundary



#### Action Plan

##### EAO Recommendation

**Do Not Apply EAO**

##### EAO Comment

Site has not identified as being potentially contaminated in accordance with the Potentially Contaminated Land General Practice Note (DSE, 2005)

#### Resources used to make decision



#### Site Use Summary

**Current Land Use**  
Residential

**Historic Land Use**  
Residential



#### Key Information Supporting EAO Decision

Research indicates this site has currently and previously been used for residential purposes.

#### Resources used to make decision

Site inspection, Historical aerial photographs (1968/9 & 1987)

#### Additional Considerations

WEST MELBOURNE EAO - AMENDMENT C309 -  
WEST MELBOURNE STRUCTURE PLAN:  
PRELIMINARY LAND CONTAMINATION ASSESSMENT

CITY OF MELBOURNE

**GIS ID: 8584**

#### COPYRIGHT

Aerial Imagery copyright  
City of Melbourne

0 5 10 20 30 40 50 metres

**SCALE (at A4) (BUILDING MAP) 1:1,200**  
DATUM GDA 94, PROJECTION MGA Zone 55

**PROJECT: 18113718**  
**DATE: 27 FEB 2019**  
**DRAWN: TPC**  
**CHECKED: IMK**





CoM Property ID: 106611

42 Miller Street WEST MELBOURNE VIC 3003



#### LEGEND

 Parcel Boundary

#### Action Plan

##### EAO Recommendation

**Do Not Apply EAO**

##### EAO Comment

Site has not identified as being potentially contaminated in accordance with the Potentially Contaminated Land General Practice Note (DSE, 2005)

#### Site Use Summary

**Current Land Use**  
Residential

**Historic Land Use**  
Residential

#### Key Information Supporting EAO Decision

Research indicates this site has currently and previously been used for residential purposes.

#### Additional Considerations

#### Resources used to make decision



#### Resources used to make decision

Site inspection, Historical aerial photographs (1968/9 & 1987)

WEST MELBOURNE EAO - AMENDMENT C309 -  
WEST MELBOURNE STRUCTURE PLAN:  
PRELIMINARY LAND CONTAMINATION ASSESSMENT

CITY OF MELBOURNE

**GIS ID: 8595**

#### COPYRIGHT

Aerial Imagery copyright  
City of Melbourne

0 5 10 20 30 40 50 metres

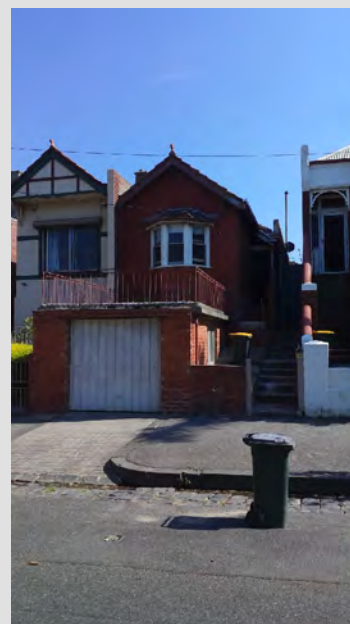
**SCALE (at A4) (BUILDING MAP) 1:1,200**  
DATUM GDA 94, PROJECTION MGA Zone 55

**PROJECT: 18113718**  
**DATE: 27 FEB 2019**  
**DRAWN: TPC**  
**CHECKED: IMK**



CoM Property ID: 106612

40 Miller Street WEST MELBOURNE VIC 3003



#### LEGEND

 Parcel Boundary

#### Action Plan

##### EAO Recommendation

**Do Not Apply EAO**

##### EAO Comment

Site has not identified as being potentially contaminated in accordance with the Potentially Contaminated Land General Practice Note (DSE, 2005)

#### Resources used to make decision



#### Site Use Summary

**Current Land Use**  
Residential

**Historic Land Use**  
Residential

#### Key Information Supporting EAO Decision

Research indicates this site has currently and previously been used for residential purposes.

#### Additional Considerations

#### Resources used to make decision

Site inspection, Historical aerial photographs (1968/9 & 1987)

WEST MELBOURNE EAO - AMENDMENT C309 -  
WEST MELBOURNE STRUCTURE PLAN:  
PRELIMINARY LAND CONTAMINATION ASSESSMENT

CITY OF MELBOURNE

**GIS ID: 8596**

#### COPYRIGHT

Aerial Imagery copyright  
City of Melbourne

0 5 10 20 30 40 50 metres

**SCALE (at A4) (BUILDING MAP) 1:1,200**  
DATUM GDA 94, PROJECTION MGA Zone 55

**PROJECT: 18113718**  
**DATE: 27 FEB 2019**  
**DRAWN: TPC**  
**CHECKED: IMK**





CoM Property ID: 106613

34 Miller Street WEST MELBOURNE VIC 3003



#### LEGEND

 Parcel Boundary

#### Action Plan

##### EAO Recommendation

**Do Not Apply EAO**

##### EAO Comment

Site has not identified as being potentially contaminated in accordance with the Potentially Contaminated Land General Practice Note (DSE, 2005)

#### Site Use Summary

**Current Land Use**  
Residential

**Historic Land Use**  
Residential

##### Key Information Supporting EAO Decision

Research indicates this site has currently and previously been used for residential purposes.

##### Additional Considerations

#### Resources used to make decision



##### Resources used to make decision

Site inspection, Historical aerial photographs (1968/9 & 1987)

WEST MELBOURNE EAO - AMENDMENT C309 -  
WEST MELBOURNE STRUCTURE PLAN:  
PRELIMINARY LAND CONTAMINATION ASSESSMENT

CITY OF MELBOURNE

**GIS ID: 8597**

##### COPYRIGHT

Aerial Imagery copyright  
City of Melbourne

0 5 10 20 30 40 50 metres

**SCALE (at A4) (BUILDING MAP) 1:1,200**  
DATUM GDA 94, PROJECTION MGA Zone 55

**PROJECT: 18113718**  
**DATE: 27 FEB 2019**  
**DRAWN: TPC**  
**CHECKED: IMK**



CoM Property ID: 106614

32 Miller Street WEST MELBOURNE VIC 3003



#### LEGEND

 Parcel Boundary



#### Action Plan

##### EAO Recommendation

**Do Not Apply EAO**

##### EAO Comment

Site has not identified as being potentially contaminated in accordance with the Potentially Contaminated Land General Practice Note (DSE, 2005)

#### Site Use Summary

**Current Land Use**  
Residential

**Historic Land Use**  
Residential

#### Key Information Supporting EAO Decision

Research indicates this site has currently and previously been used for residential purposes.

#### Additional Considerations

#### Resources used to make decision



#### Resources used to make decision

Site inspection, Historical aerial photographs (1968/9 & 1987)

WEST MELBOURNE EAO - AMENDMENT C309 -  
WEST MELBOURNE STRUCTURE PLAN:  
PRELIMINARY LAND CONTAMINATION ASSESSMENT

CITY OF MELBOURNE

**GIS ID: 8598**

#### COPYRIGHT

Aerial Imagery copyright  
City of Melbourne

0 5 10 20 30 40 50 metres

**SCALE (at A4) (BUILDING MAP) 1:1,200**  
DATUM GDA 94, PROJECTION MGA Zone 55

**PROJECT: 18113718**  
**DATE: 27 FEB 2019**  
**DRAWN: TPC**  
**CHECKED: IMK**





Information contained on this drawing is the copyright of Golder Associates Pty. Ltd. Unauthorised use or reproduction of this plan either wholly or in part without written permission infringes copyright. © Golder Associates Pty. Ltd.

CoM Property ID: 106615

26-30 Miller Street WEST MELBOURNE VIC 3003



#### LEGEND

 Parcel Boundary



#### Action Plan

##### EAO Recommendation

**Do Not Apply EAO**

##### EAO Comment

Site has not identified as being potentially contaminated in accordance with the Potentially Contaminated Land General Practice Note (DSE, 2005)

#### Resources used to make decision



#### Site Use Summary

**Current Land Use**  
Residential

**Historic Land Use**  
Residential

#### Key Information Supporting EAO Decision

Research indicates this site has currently and previously been used for residential purposes.



#### Additional Considerations

#### Resources used to make decision

Site inspection, Historical aerial photographs (1968/9 & 1987)

WEST MELBOURNE EAO - AMENDMENT C309 -  
WEST MELBOURNE STRUCTURE PLAN:  
PRELIMINARY LAND CONTAMINATION ASSESSMENT

CITY OF MELBOURNE

**GIS ID: 8599**

#### COPYRIGHT

Aerial Imagery copyright  
City of Melbourne

0 5 10 20 30 40 50 metres

**SCALE (at A4) (BUILDING MAP) 1:1,200**  
DATUM GDA 94, PROJECTION MGA Zone 55

**PROJECT: 18113718**  
**DATE: 27 FEB 2019**  
**DRAWN: TPC**  
**CHECKED: IMK**



Information contained on this drawing is the copyright of Golder Associates Pty. Ltd. Unauthorised use or reproduction of this plan either wholly or in part without written permission infringes copyright. © Golder Associates Pty. Ltd.

CoM Property ID: 106616

24 Miller Street WEST MELBOURNE VIC 3003



#### LEGEND

 Parcel Boundary



#### Action Plan

##### EAO Recommendation

**Do Not Apply EAO**

##### EAO Comment

Site has not identified as being potentially contaminated in accordance with the Potentially Contaminated Land General Practice Note (DSE, 2005)

#### Resources used to make decision



#### Site Use Summary

**Current Land Use**  
Residential

**Historic Land Use**  
Residential

#### Key Information Supporting EAO Decision

Research indicates this site has currently and previously been used for residential purposes.



#### Additional Considerations

#### Resources used to make decision

Site inspection, Historical aerial photographs (1968/9 & 1987)

WEST MELBOURNE EAO - AMENDMENT C309 -  
WEST MELBOURNE STRUCTURE PLAN:  
PRELIMINARY LAND CONTAMINATION ASSESSMENT

CITY OF MELBOURNE

**GIS ID: 8600**

#### COPYRIGHT

Aerial Imagery copyright  
City of Melbourne

0 5 10 20 30 40 50 metres

**SCALE (at A4) (BUILDING MAP) 1:1,200**  
DATUM GDA 94, PROJECTION MGA Zone 55

**PROJECT: 18113718**  
**DATE: 27 FEB 2019**  
**DRAWN: TPC**  
**CHECKED: IMK**





Information contained on this drawing is the copyright of Golder Associates Pty. Ltd. Unauthorised use or reproduction of this plan either wholly or in part without written permission infringes copyright. © Golder Associates Pty. Ltd.

CoM Property ID: 106617

22 Miller Street WEST MELBOURNE VIC 3003



#### LEGEND

 Parcel Boundary



#### Action Plan

##### EAO Recommendation

**Do Not Apply EAO**

##### EAO Comment

Site has not identified as being potentially contaminated in accordance with the Potentially Contaminated Land General Practice Note (DSE, 2005)

#### Resources used to make decision



#### Site Use Summary

**Current Land Use**  
Residential

**Historic Land Use**  
Residential



#### Key Information Supporting EAO Decision

Research indicates this site has currently and previously been used for residential purposes.

#### Additional Considerations

#### Resources used to make decision

Site inspection, Historical aerial photographs (1968/9 & 1987)

WEST MELBOURNE EAO - AMENDMENT C309 -  
WEST MELBOURNE STRUCTURE PLAN:  
PRELIMINARY LAND CONTAMINATION ASSESSMENT

CITY OF MELBOURNE

**GIS ID: 8601**

#### COPYRIGHT

Aerial Imagery copyright  
City of Melbourne

0 5 10 20 30 40 50 metres

**SCALE (at A4) (BUILDING MAP) 1:1,200**  
DATUM GDA 94, PROJECTION MGA Zone 55

**PROJECT: 18113718**  
**DATE: 27 FEB 2019**  
**DRAWN: TPC**  
**CHECKED: IMK**



Information contained on this drawing is the copyright of Golder Associates Pty. Ltd. Unauthorised use or reproduction of this plan either wholly or in part without written permission infringes copyright. © Golder Associates Pty. Ltd.

CoM Property ID: 106618

18-20 Miller Street WEST MELBOURNE VIC 3003



LEGEND

Parcel Boundary

Action Plan

EAO Recommendation

**Do Not Apply EAO**

EAO Comment

Site has not identified as being potentially contaminated in accordance with the Potentially Contaminated Land General Practice Note (DSE, 2005)

Resources used to make decision



Site Use Summary

**Current Land Use**  
Residential

**Historic Land Use**  
Residential



Key Information Supporting EAO Decision

Research indicates this site has currently and previously been used for residential purposes.

Additional Considerations

Resources used to make decision

West Melbourne Heritage Review Appendix 2 (May 2016), Site inspection, Historical aerial photographs (1968/9 & 1987)

WEST MELBOURNE EAO - AMENDMENT C309 -  
WEST MELBOURNE STRUCTURE PLAN:  
PRELIMINARY LAND CONTAMINATION ASSESSMENT

CITY OF MELBOURNE

**GIS ID: 8602**

COPYRIGHT

Aerial Imagery copyright  
City of Melbourne

0 5 10 20 30 40 50 metres

**SCALE (at A4) (BUILDING MAP) 1:1,200**  
DATUM GDA 94, PROJECTION MGA Zone 55

**PROJECT: 18113718**  
**DATE: 27 FEB 2019**  
**DRAWN: TPC**  
**CHECKED: IMK**





Information contained on this drawing is the copyright of Golder Associates Pty. Ltd. Unauthorised use or reproduction of this plan either wholly or in part without written permission infringes copyright. © Golder Associates Pty. Ltd.

CoM Property ID: 106619

16 Miller Street WEST MELBOURNE VIC 3003



LEGEND

 Parcel Boundary



Action Plan

EAO Recommendation

**Do Not Apply EAO**

EAO Comment

Site has not identified as being potentially contaminated in accordance with the Potentially Contaminated Land General Practice Note (DSE, 2005)

Site Use Summary

**Current Land Use**  
Residential

**Historic Land Use**  
Residential

Key Information Supporting EAO Decision

Research indicates this site has currently and previously been used for residential purposes.

Additional Considerations

Resources used to make decision



Resources used to make decision

Site inspection, Historical aerial photographs (1968/9 & 1987)

WEST MELBOURNE EAO - AMENDMENT C309 -  
WEST MELBOURNE STRUCTURE PLAN:  
PRELIMINARY LAND CONTAMINATION ASSESSMENT

CITY OF MELBOURNE

GIS ID: 8603

COPYRIGHT

Aerial Imagery copyright  
City of Melbourne

0 5 10 20 30 40 50 metres

SCALE (at A4) (BUILDING MAP) 1:1,200  
DATUM GDA 94, PROJECTION MGA Zone 55

PROJECT: 18113718  
DATE: 27 FEB 2019  
DRAWN: TPC  
CHECKED: IMK



Information contained on this drawing is the copyright of Golder Associates Pty. Ltd. Unauthorised use or reproduction of this plan either wholly or in part without written permission infringes copyright. © Golder Associates Pty. Ltd.

CoM Property ID: 106620

14 Miller Street WEST MELBOURNE VIC 3003



#### LEGEND

 Parcel Boundary



#### Action Plan

##### EAO Recommendation

**Do Not Apply EAO**

##### EAO Comment

Site has not identified as being potentially contaminated in accordance with the Potentially Contaminated Land General Practice Note (DSE, 2005)

#### Resources used to make decision



#### Site Use Summary

**Current Land Use**  
Residential

**Historic Land Use**  
Residential

#### Key Information Supporting EAO Decision

Research indicates this site has currently and previously been used for residential purposes.

#### Additional Considerations

#### Resources used to make decision

Site inspection, Historical aerial photographs (1968/9 & 1987)

WEST MELBOURNE EAO - AMENDMENT C309 -  
WEST MELBOURNE STRUCTURE PLAN:  
PRELIMINARY LAND CONTAMINATION ASSESSMENT

CITY OF MELBOURNE

**GIS ID: 8604**

#### COPYRIGHT

Aerial Imagery copyright  
City of Melbourne

0 5 10 20 30 40 50 metres

**SCALE (at A4) (BUILDING MAP) 1:1,200**  
DATUM GDA 94, PROJECTION MGA Zone 55

**PROJECT: 18113718**  
**DATE: 27 FEB 2019**  
**DRAWN: TPC**  
**CHECKED: IMK**





Information contained on this drawing is the copyright of Golder Associates Pty. Ltd. Unauthorised use or reproduction of this plan either wholly or in part without written permission infringes copyright. © Golder Associates Pty. Ltd.

CoM Property ID: 106674

38 Milton Street WEST MELBOURNE VIC 3003



#### LEGEND

 Parcel Boundary

### Action Plan

#### EAO Recommendation

**Do Not Apply EAO**

#### EAO Comment

Site has not identified as being potentially contaminated in accordance with the Potentially Contaminated Land General Practice Note (DSE, 2005)

### Site Use Summary

**Current Land Use**  
Residential

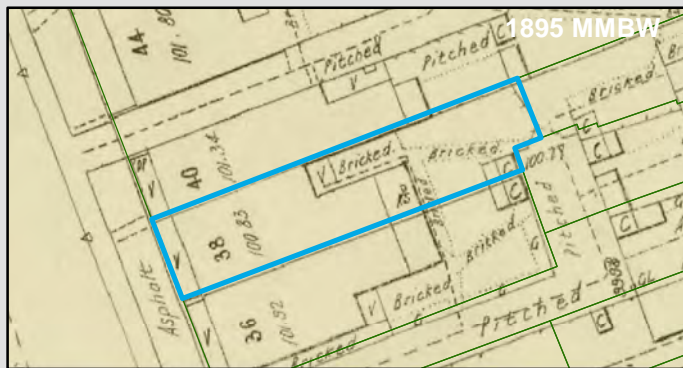
**Historic Land Use**  
Residential

#### Key Information Supporting EAO Decision

Research indicates this site has currently and previously been used for residential purposes.

#### Additional Considerations

### Resources used to make decision



#### Resources used to make decision

Site inspection, Historical aerial photographs (1968/9 & 1987)

WEST MELBOURNE EAO - AMENDMENT C309 -  
WEST MELBOURNE STRUCTURE PLAN:  
PRELIMINARY LAND CONTAMINATION ASSESSMENT

CITY OF MELBOURNE

**GIS ID: 7700**

#### COPYRIGHT

Aerial Imagery copyright  
City of Melbourne

0 2.5 5 10 15 20 25 metres

**SCALE (at A4) (BUILDING MAP) 1:500**  
DATUM GDA 94, PROJECTION MGA Zone 55


**PROJECT: 18113718**  
**DATE: 27 FEB 2019**  
**DRAWN: TPC**  
**CHECKED: IMK**



Information contained on this drawing is the copyright of Golder Associates Pty. Ltd. Unauthorised use or reproduction of this plan either wholly or in part without written permission infringes copyright. © Golder Associates Pty. Ltd.



LEGEND

 Parcel Boundary

Action Plan

EAO Recommendation

Do Not Apply EAO

EAO Comment

Site has not identified as being potentially contaminated in accordance with the Potentially Contaminated Land General Practice Note (DSE, 2005)

Site Use Summary

**Current Land Use**  
Residential

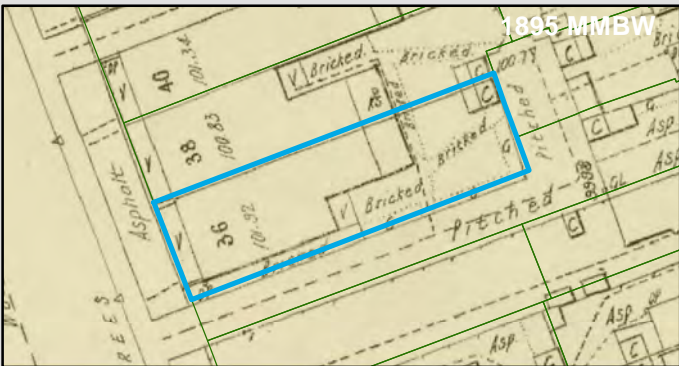
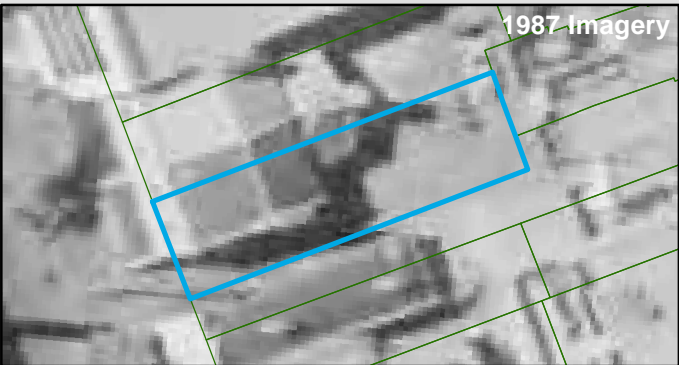
**Historic Land Use**  
Residential

Key Information Supporting EAO Decision

Research indicates this site has currently and previously been used for residential purposes.

Additional Considerations

Resources used to make decision



Resources used to make decision

Site inspection, Historical aerial photographs (1968/9 & 1987)

WEST MELBOURNE EAO - AMENDMENT C309 -  
WEST MELBOURNE STRUCTURE PLAN:  
PRELIMINARY LAND CONTAMINATION ASSESSMENT

CITY OF MELBOURNE

**GIS ID: 7701**

COPYRIGHT

Aerial Imagery copyright  
City of Melbourne

0 2.5 5 10 15 20 25 metres

**SCALE (at A4) (BUILDING MAP) 1:500**  
DATUM GDA 94, PROJECTION MGA Zone 55

**PROJECT: 18113718**  
**DATE: 27 FEB 2019**  
**DRAWN: TPC**  
**CHECKED: IMK**





CoM Property ID: 106676

34 Milton Street WEST MELBOURNE VIC 3003



#### LEGEND

 Parcel Boundary

#### Action Plan

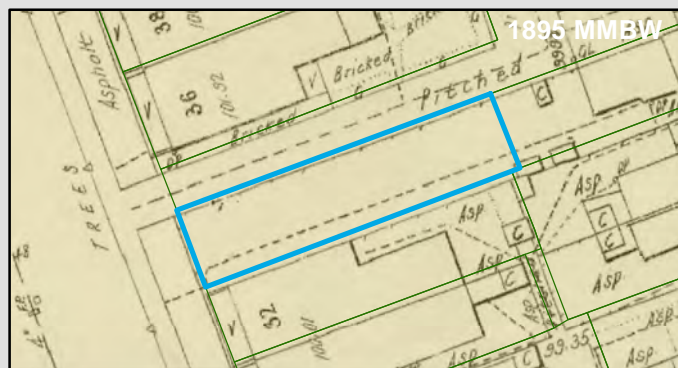
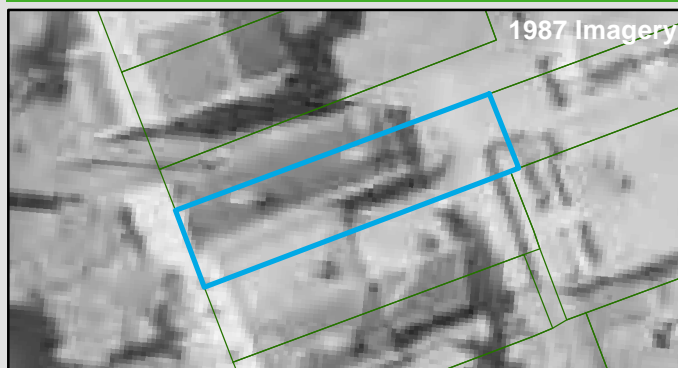
##### EAO Recommendation

**Do Not Apply EAO**

##### EAO Comment

Site has not identified as being potentially contaminated in accordance with the Potentially Contaminated Land General Practice Note (DSE, 2005)

#### Resources used to make decision



#### Site Use Summary

**Current Land Use**  
Residential

**Historic Land Use**  
Residential

#### Key Information Supporting EAO Decision

Research indicates this site has currently and previously been used for residential purposes.

#### Additional Considerations

#### Resources used to make decision

Site inspection, Historical aerial photographs (1968/9 & 1987)

WEST MELBOURNE EAO - AMENDMENT C309 -  
WEST MELBOURNE STRUCTURE PLAN:  
PRELIMINARY LAND CONTAMINATION ASSESSMENT

CITY OF MELBOURNE

**GIS ID: 7702**

#### COPYRIGHT

Aerial Imagery copyright  
City of Melbourne

0 2.5 5 10 15 20 25 metres

**SCALE (at A4) (BUILDING MAP) 1:500**  
DATUM GDA 94, PROJECTION MGA Zone 55

**PROJECT: 18113718**  
**DATE: 27 FEB 2019**  
**DRAWN: TPC**  
**CHECKED: IMK**



Information contained on this drawing is the copyright of Golder Associates Pty. Ltd. Unauthorised use or reproduction of this plan either wholly or in part without written permission infringes copyright. © Golder Associates Pty. Ltd.

CoM Property ID: 106677

32 Milton Street WEST MELBOURNE VIC 3003



#### LEGEND

 Parcel Boundary

### Action Plan

#### EAO Recommendation

**Do Not Apply EAO**

#### EAO Comment

Site has not identified as being potentially contaminated in accordance with the Potentially Contaminated Land General Practice Note (DSE, 2005)

### Site Use Summary

**Current Land Use**  
Residential

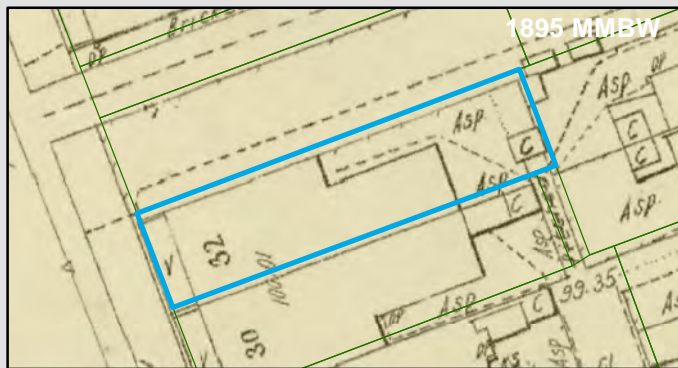
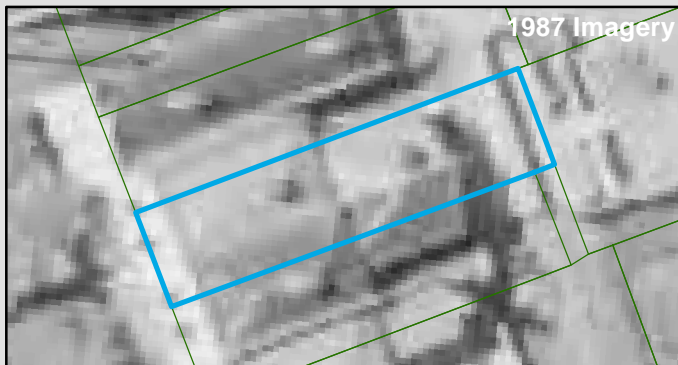
**Historic Land Use**  
Residential

#### Key Information Supporting EAO Decision

Research indicates this site has currently and previously been used for residential purposes.

#### Additional Considerations

### Resources used to make decision



#### Resources used to make decision

Site inspection, Historical aerial photographs (1968/9 & 1987)

WEST MELBOURNE EAO - AMENDMENT C309 -  
WEST MELBOURNE STRUCTURE PLAN:  
PRELIMINARY LAND CONTAMINATION ASSESSMENT

CITY OF MELBOURNE

**GIS ID: 7703**

#### COPYRIGHT

Aerial Imagery copyright  
City of Melbourne

0 2 4 8 12 16 20 metres

**SCALE (at A4) (BUILDING MAP) 1:400**  
DATUM GDA 94, PROJECTION MGA Zone 55

**PROJECT: 18113718**  
**DATE: 27 FEB 2019**  
**DRAWN: TPC**  
**CHECKED: IMK**





Information contained on this drawing is the copyright of Golder Associates Pty. Ltd. Unauthorised use or reproduction of this plan either wholly or in part without written permission infringes copyright. © Golder Associates Pty. Ltd.

CoM Property ID: 106678

30 Milton Street WEST MELBOURNE VIC 3003



LEGEND

 Parcel Boundary

Action Plan

EAO Recommendation

**Do Not Apply EAO**

EAO Comment

Site has not identified as being potentially contaminated in accordance with the Potentially Contaminated Land General Practice Note (DSE, 2005)

Site Use Summary

**Current Land Use**  
Residential

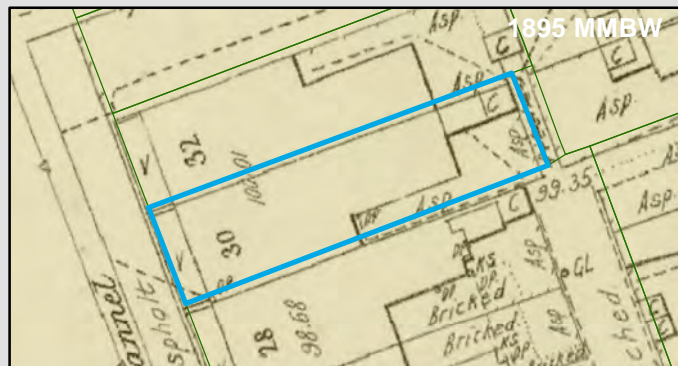
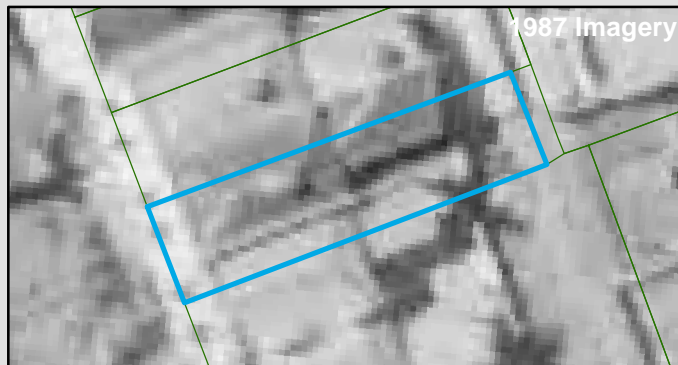
**Historic Land Use**  
Residential

Key Information Supporting EAO Decision

Research indicates this site has currently and previously been used for residential purposes.

Additional Considerations

Resources used to make decision



Resources used to make decision

Site inspection, Historical aerial photographs (1968/9 & 1987)

WEST MELBOURNE EAO - AMENDMENT C309 -  
WEST MELBOURNE STRUCTURE PLAN:  
PRELIMINARY LAND CONTAMINATION ASSESSMENT

CITY OF MELBOURNE

GIS ID: 7704

COPYRIGHT

Aerial Imagery copyright  
City of Melbourne

0 2 4 8 12 16 20 metres

SCALE (at A4) (BUILDING MAP) 1:400  
DATUM GDA 94, PROJECTION MGA Zone 55

PROJECT: 18113718  
DATE: 27 FEB 2019  
DRAWN: TPC  
CHECKED: IMK



Information contained on this drawing is the copyright of Golder Associates Pty. Ltd. Unauthorised use or reproduction of this plan either wholly or in part without written permission infringes copyright. © Golder Associates Pty. Ltd.



LEGEND

Parcel Boundary

Action Plan

EAO Recommendation

Do Not Apply EAO

EAO Comment

Site has not identified as being potentially contaminated in accordance with the Potentially Contaminated Land General Practice Note (DSE, 2005)

Site Use Summary

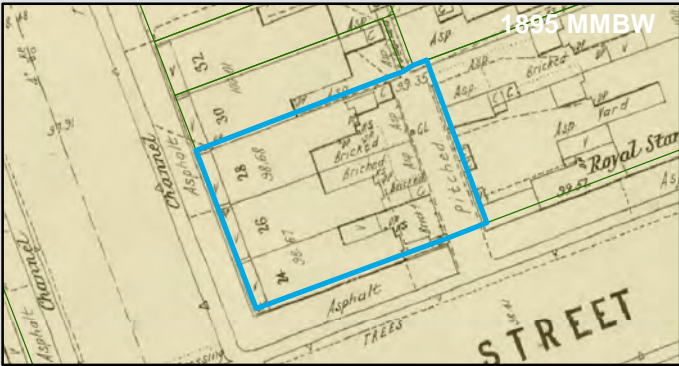
Current Land Use	Historic Land Use
Residential	Residential

Key Information Supporting EAO Decision

Research indicates this site has currently and previously been used for residential purposes.

Additional Considerations

Resources used to make decision



Resources used to make decision

Site inspection, Historical aerial photographs (1968/9 & 1987)

WEST MELBOURNE EAO - AMENDMENT C309 -  
WEST MELBOURNE STRUCTURE PLAN:  
PRELIMINARY LAND CONTAMINATION ASSESSMENT

CITY OF MELBOURNE

GIS ID: 7485

COPYRIGHT

Aerial Imagery copyright  
City of Melbourne

0 3.5 7 14 21 28 35 metres

SCALE (at A4) (BUILDING MAP) 1:700  
DATUM GDA 94, PROJECTION MGA Zone 55

PROJECT: 18113718  
DATE: 27 FEB 2019  
DRAWN: TPC  
CHECKED: IMK





CoM Property ID: 107471

5-19 Peel Street WEST MELBOURNE VIC 3003



#### LEGEND

 Parcel Boundary



#### Action Plan

##### EAO Recommendation

**Do Not Apply EAO**

##### EAO Comment

Site has not identified as being potentially contaminated in accordance with the Potentially Contaminated Land General Practice Note (DSE, 2005)

#### Resources used to make decision



1987 Imagery

#### Site Use Summary

**Current Land Use**  
Residential

**Historic Land Use**  
Other (unsure)



1895 MMBW

#### Key Information Supporting EAO Decision

No current or previous potentially contaminating land uses identified on site.

#### Additional Considerations

Historical Aerials show no building on site prior to the current residential units.

#### Resources used to make decision

Site inspection, Historical aerial photographs (1968/9 & 1987)

WEST MELBOURNE EAO - AMENDMENT C309 -  
WEST MELBOURNE STRUCTURE PLAN:  
PRELIMINARY LAND CONTAMINATION ASSESSMENT

CITY OF MELBOURNE

**GIS ID: 7455**

#### COPYRIGHT

Aerial Imagery copyright  
City of Melbourne

0 5 10 20 30 40 50 metres

**SCALE (at A4) (BUILDING MAP) 1:1,500**  
DATUM GDA 94, PROJECTION MGA Zone 55

**PROJECT: 18113718**  
**DATE: 27 FEB 2019**  
**DRAWN: TPC**  
**CHECKED: IMK**



Information contained on this drawing is the copyright of Golder Associates Pty. Ltd. Unauthorised use or reproduction of this plan either wholly or in part without written permission infringes copyright. © Golder Associates Pty. Ltd.

CoM Property ID: 107472

21-23 Peel Street WEST MELBOURNE VIC 3003



#### LEGEND

 Parcel Boundary



#### Action Plan

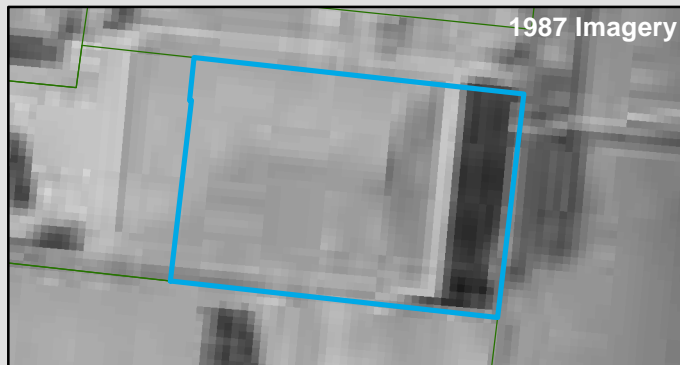
##### EAO Recommendation

**Do Not Apply EAO**

##### EAO Comment

Site has not identified as being potentially contaminated in accordance with the Potentially Contaminated Land General Practice Note (DSE, 2005)

#### Resources used to make decision



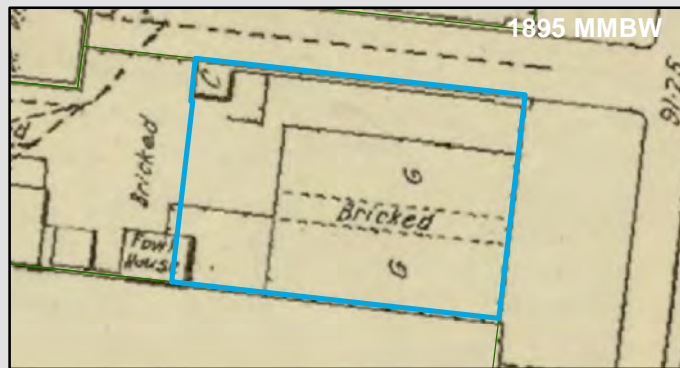
#### Site Use Summary

**Current Land Use**  
Commercial

**Historic Land Use**  
Residential

#### Key Information Supporting EAO Decision

No current or previous potentially contaminating land uses identified on site.



#### Additional Considerations

#### Resources used to make decision

West Melbourne Heritage Review Appendix 2 (May 2016), Site inspection, Historical aerial photographs (1968/9 & 1987)

WEST MELBOURNE EAO - AMENDMENT C309 -  
WEST MELBOURNE STRUCTURE PLAN:  
PRELIMINARY LAND CONTAMINATION ASSESSMENT

CITY OF MELBOURNE

**GIS ID: 7456**

#### COPYRIGHT

Aerial Imagery copyright  
City of Melbourne

0 1.5 3 6 9 12 15 metres

**SCALE (at A4) (BUILDING MAP) 1:300**  
DATUM GDA 94, PROJECTION MGA Zone 55

**PROJECT: 18113718**  
**DATE: 27 FEB 2019**  
**DRAWN: TPC**  
**CHECKED: IMK**






Information contained on this drawing is the copyright of Golder Associates Pty. Ltd. Unauthorised use or reproduction of this plan either wholly or in part without written permission infringes copyright. © Golder Associates Pty. Ltd.



LEGEND

 Parcel Boundary



Action Plan

EAO Recommendation

Do Not Apply EAO

EAO Comment

Site has not identified as being potentially contaminated in accordance with the Potentially Contaminated Land General Practice Note (DSE, 2005)

Site Use Summary

Current Land Use  
Commercial

Historic Land Use  
Residential

Key Information Supporting EAO Decision

No current or previous potentially contaminating land uses identified on site.

Additional Considerations

Site is adjacent to two former service stations.

Resources used to make decision



Resources used to make decision

West Melbourne Heritage Review Appendix 2 (May 2016), Site inspection, Historical aerial photographs (1968/9 & 1987)

WEST MELBOURNE EAO - AMENDMENT C309 -  
WEST MELBOURNE STRUCTURE PLAN:  
PRELIMINARY LAND CONTAMINATION ASSESSMENT

CITY OF MELBOURNE

GIS ID: 7458

COPYRIGHT  
Aerial Imagery copyright  
City of Melbourne

0 3.5 7 14 21 28 35 metres  
SCALE (at A4) (BUILDING MAP) 1:700  
DATUM GDA 94, PROJECTION MGA Zone 55  
PROJECT: 18113718  
DATE: 27 FEB 2019  
DRAWN: TPC  
CHECKED: IMK



Information contained on this drawing is the copyright of Golder Associates Pty. Ltd. Unauthorised use or reproduction of this plan either wholly or in part without written permission infringes copyright. © Golder Associates Pty. Ltd.

CoM Property ID: 107478

49-51 Peel Street WEST MELBOURNE VIC 3003



#### LEGEND

 Parcel Boundary



#### Action Plan

##### EAO Recommendation

**Do Not Apply EAO**

##### EAO Comment

Site has not identified as being potentially contaminated in accordance with the Potentially Contaminated Land General Practice Note (DSE, 2005)

#### Resources used to make decision



#### Site Use Summary

**Current Land Use**  
Commercial

**Historic Land Use**  
Commercial



##### Key Information Supporting EAO Decision

No current or previous potentially contaminating land uses identified on site.

##### Additional Considerations

##### Resources used to make decision

West Melbourne Heritage Review Appendix 2 (May 2016), Site inspection, Historical aerial photographs (1968/9 & 1987)

WEST MELBOURNE EAO - AMENDMENT C309 -  
WEST MELBOURNE STRUCTURE PLAN:  
PRELIMINARY LAND CONTAMINATION ASSESSMENT

CITY OF MELBOURNE

**GIS ID: 7459**

##### COPYRIGHT

Aerial Imagery copyright  
City of Melbourne

0 2 4 8 12 16 20 metres

**SCALE (at A4) (BUILDING MAP) 1:400**  
DATUM GDA 94, PROJECTION MGA Zone 55

**PROJECT: 18113718**  
**DATE: 27 FEB 2019**  
**DRAWN: TPC**  
**CHECKED: IMK**





Information contained on this drawing is the copyright of Golder Associates Pty. Ltd. Unauthorised use or reproduction of this plan either wholly or in part without written permission infringes copyright. © Golder Associates Pty. Ltd.

CoM Property ID: 107479

57-61 Peel Street WEST MELBOURNE VIC 3003



LEGEND

 Parcel Boundary



Action Plan

EAO Recommendation

**Do Not Apply EAO**

EAO Comment

Site has not identified as being potentially contaminated in accordance with the Potentially Contaminated Land General Practice Note (DSE, 2005)

Resources used to make decision



Site Use Summary

**Current Land Use**  
Commercial

**Historic Land Use**  
Residential



Key Information Supporting EAO Decision

No current or previous potentially contaminating land uses identified on site.

Resources used to make decision

Site inspection, Historical aerial photographs (1968/9 & 1987), MMBW Maps (1895)

Additional Considerations

WEST MELBOURNE EAO - AMENDMENT C309 -  
WEST MELBOURNE STRUCTURE PLAN:  
PRELIMINARY LAND CONTAMINATION ASSESSMENT

CITY OF MELBOURNE

**GIS ID: 7460**

COPYRIGHT

Aerial Imagery copyright  
City of Melbourne

0 3 6 12 18 24 30 metres

**SCALE (at A4) (BUILDING MAP) 1:600**  
DATUM GDA 94, PROJECTION MGA Zone 55

**PROJECT: 18113718**  
**DATE: 27 FEB 2019**  
**DRAWN: TPC**  
**CHECKED: IMK**



Information contained on this drawing is the copyright of Golder Associates Pty. Ltd. Unauthorised use or reproduction of this plan either wholly or in part without written permission infringes copyright. © Golder Associates Pty. Ltd.



LEGEND

 Parcel Boundary



Action Plan

EAO Recommendation

Do Not Apply EAO

EAO Comment

Site has not identified as being potentially contaminated in accordance with the Potentially Contaminated Land General Practice Note (DSE, 2005)

Resources used to make decision



Site Use Summary

Current Land Use  
Commercial

Historic Land Use  
Residential



Key Information Supporting EAO Decision

No current or previous potentially contaminating land uses identified on site.

Resources used to make decision

West Melbourne Heritage Review Appendix 2 (May 2016), Site inspection, Historical aerial photographs (1968/9 & 1987)

Additional Considerations

WEST MELBOURNE EAO - AMENDMENT C309 -  
WEST MELBOURNE STRUCTURE PLAN:  
PRELIMINARY LAND CONTAMINATION ASSESSMENT

CITY OF MELBOURNE

GIS ID: 7461

COPYRIGHT  
Aerial Imagery copyright  
City of Melbourne

0 2 4 8 12 16 20 metres  
SCALE (at A4) (BUILDING MAP) 1:400  
DATUM GDA 94, PROJECTION MGA Zone 55  
PROJECT: 18113718  
DATE: 27 FEB 2019  
DRAWN: TPC  
CHECKED: IMK





Information contained on this drawing is the copyright of Golder Associates Pty. Ltd. Unauthorised use or reproduction of this plan either wholly or in part without written permission infringes copyright. © Golder Associates Pty. Ltd.

CoM Property ID: 107481

65-67 Peel Street WEST MELBOURNE VIC 3003



#### LEGEND

 Parcel Boundary



#### Action Plan

##### EAO Recommendation

**Do Not Apply EAO**

##### EAO Comment

Site has not identified as being potentially contaminated in accordance with the Potentially Contaminated Land General Practice Note (DSE, 2005)

#### Resources used to make decision

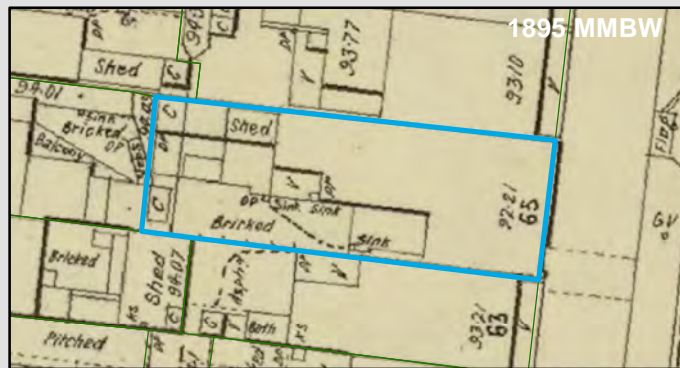


1987 Imagery

#### Site Use Summary

**Current Land Use**  
Commercial

**Historic Land Use**  
Residential



1895 MMBW

##### Key Information Supporting EAO Decision

No current or previous potentially contaminating land uses identified on site.

#### Additional Considerations

##### Resources used to make decision

West Melbourne Heritage Review Appendix 2 (May 2016), Site inspection, Historical aerial photographs (1968/9 & 1987)

WEST MELBOURNE EAO - AMENDMENT C309 -  
WEST MELBOURNE STRUCTURE PLAN:  
PRELIMINARY LAND CONTAMINATION ASSESSMENT

CITY OF MELBOURNE

**GIS ID: 7462**

##### COPYRIGHT

Aerial Imagery copyright  
City of Melbourne

0 2 4 8 12 16 20 metres

**SCALE (at A4) (BUILDING MAP) 1:400**  
DATUM GDA 94, PROJECTION MGA Zone 55

**PROJECT: 18113718**  
**DATE: 27 FEB 2019**  
**DRAWN: TPC**  
**CHECKED: IMK**



Information contained on this drawing is the copyright of Golder Associates Pty. Ltd. Unauthorised use or reproduction of this plan either wholly or in part without written permission infringes copyright. © Golder Associates Pty. Ltd.

CoM Property ID: 107484

77-79 Peel Street WEST MELBOURNE VIC 3003



#### LEGEND

 Parcel Boundary



#### Action Plan

##### EAO Recommendation

**Do Not Apply EAO**

##### EAO Comment

Site has not identified as being potentially contaminated in accordance with the Potentially Contaminated Land General Practice Note (DSE, 2005)

#### Resources used to make decision

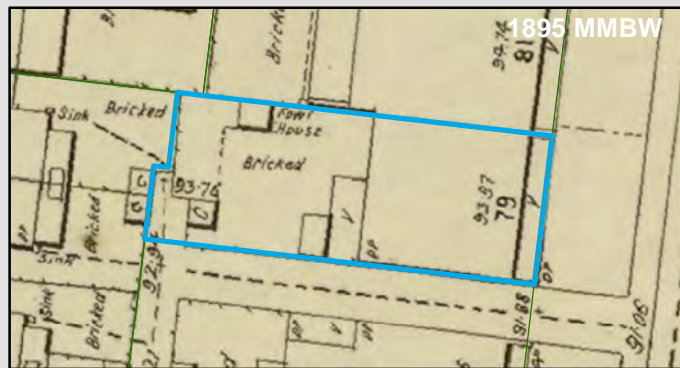


1987 Imagery

#### Site Use Summary

**Current Land Use**  
Residential

**Historic Land Use**  
Residential



1895 MMBW

#### Key Information Supporting EAO Decision

Research indicates this site has currently and previously been used for residential purposes.

#### Additional Considerations

#### Resources used to make decision

West Melbourne Heritage Review Appendix 2 (May 2016), Site inspection, Historical aerial photographs (1968/9 & 1987)

WEST MELBOURNE EAO - AMENDMENT C309 -  
WEST MELBOURNE STRUCTURE PLAN:  
PRELIMINARY LAND CONTAMINATION ASSESSMENT

CITY OF MELBOURNE

**GIS ID: 7465**

#### COPYRIGHT

Aerial Imagery copyright  
City of Melbourne

0 2 4 8 12 16 20 metres

**SCALE (at A4) (BUILDING MAP) 1:400**  
DATUM GDA 94, PROJECTION MGA Zone 55

**PROJECT: 18113718**  
**DATE: 27 FEB 2019**  
**DRAWN: TPC**  
**CHECKED: IMK**





Information contained on this drawing is the copyright of Golder Associates Pty. Ltd. Unauthorised use or reproduction of this plan either wholly or in part without written permission infringes copyright. © Golder Associates Pty. Ltd.

CoM Property ID: 107485

81-83 Peel Street WEST MELBOURNE VIC 3003



#### LEGEND

 Parcel Boundary



#### Action Plan

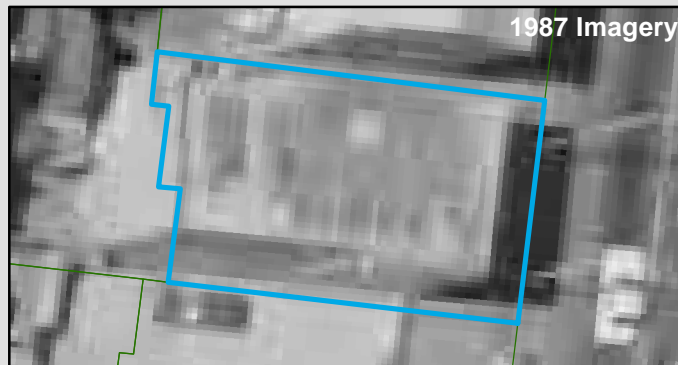
##### EAO Recommendation

**Do Not Apply EAO**

##### EAO Comment

Site has not identified as being potentially contaminated in accordance with the Potentially Contaminated Land General Practice Note (DSE, 2005)

#### Resources used to make decision



#### Site Use Summary

**Current Land Use**  
Commercial

**Historic Land Use**  
Commercial



#### Key Information Supporting EAO Decision

No current or previous potentially contaminating land uses identified on site.

#### Additional Considerations

#### Resources used to make decision

West Melbourne Heritage Review Appendix 2 (May 2016), Site inspection, Historical aerial photographs (1968/9 & 1987)

WEST MELBOURNE EAO - AMENDMENT C309 -  
WEST MELBOURNE STRUCTURE PLAN:  
PRELIMINARY LAND CONTAMINATION ASSESSMENT

CITY OF MELBOURNE

**GIS ID: 7466**

#### COPYRIGHT

Aerial Imagery copyright  
City of Melbourne

0 2 4 8 12 16 20 metres

**SCALE (at A4) (BUILDING MAP) 1:400**  
DATUM GDA 94, PROJECTION MGA Zone 55

**PROJECT: 18113718**  
**DATE: 27 FEB 2019**  
**DRAWN: TPC**  
**CHECKED: IMK**



Information contained on this drawing is the copyright of Golder Associates Pty. Ltd. Unauthorised use or reproduction of this plan either wholly or in part without written permission infringes copyright. © Golder Associates Pty. Ltd.

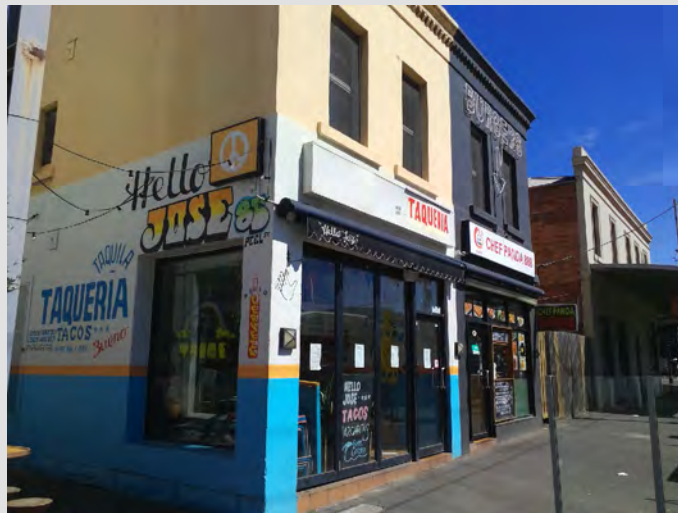
CoM Property ID: 107486

85-87 Peel Street WEST MELBOURNE VIC 3003



#### LEGEND

 Parcel Boundary



#### Action Plan

##### EAO Recommendation

**Do Not Apply EAO**

##### EAO Comment

Site has not identified as being potentially contaminated in accordance with the Potentially Contaminated Land General Practice Note (DSE, 2005)

#### Site Use Summary

**Current Land Use**  
Commercial

**Historic Land Use**  
Commercial

#### Key Information Supporting EAO Decision

No current or previous potentially contaminating land uses identified on site.

#### Additional Considerations

#### Resources used to make decision



#### Resources used to make decision

West Melbourne Heritage Review Appendix 2 (May 2016), Site inspection, Historical aerial photographs (1968/9 & 1987)

WEST MELBOURNE EAO - AMENDMENT C309 -  
WEST MELBOURNE STRUCTURE PLAN:  
PRELIMINARY LAND CONTAMINATION ASSESSMENT

CITY OF MELBOURNE

**GIS ID: 7467**

#### COPYRIGHT

Aerial Imagery copyright  
City of Melbourne

0 2 4 8 12 16 20 metres

**SCALE (at A4) (BUILDING MAP) 1:400**  
DATUM GDA 94, PROJECTION MGA Zone 55

**PROJECT: 18113718**  
**DATE: 27 FEB 2019**  
**DRAWN: TPC**  
**CHECKED: IMK**





Information contained on this drawing is the copyright of Golder Associates Pty. Ltd. Unauthorised use or reproduction of this plan either wholly or in part without written permission infringes copyright. © Golder Associates Pty. Ltd.

CoM Property ID: 108132

106-116 Railway Place WEST MELBOURNE VIC 3003



#### LEGEND

 Parcel Boundary



#### Action Plan

##### EAO Recommendation

**Do Not Apply EAO**

##### EAO Comment

Site has not identified as being potentially contaminated in accordance with the Potentially Contaminated Land General Practice Note (DSE, 2005)

#### Resources used to make decision



#### Site Use Summary

**Current Land Use**  
Residential

**Historic Land Use**  
Residential



#### Key Information Supporting EAO Decision

Research indicates this site has currently and previously been used for residential purposes.

#### Additional Considerations

#### Resources used to make decision

West Melbourne Heritage Review Appendix 2 (May 2016), Site inspection, Historical aerial photographs (1968/9 & 1987)

WEST MELBOURNE EAO - AMENDMENT C309 -  
WEST MELBOURNE STRUCTURE PLAN:  
PRELIMINARY LAND CONTAMINATION ASSESSMENT

CITY OF MELBOURNE

GIS ID: 6570

#### COPYRIGHT

Aerial Imagery copyright  
City of Melbourne

0 5 10 20 30 40 50 metres

SCALE (at A4) (BUILDING MAP) 1:1,400  
DATUM GDA 94, PROJECTION MGA Zone 55

PROJECT: 18113718  
DATE: 27 FEB 2019  
DRAWN: TPC  
CHECKED: IMK



CoM Property ID: 108134

86 Railway Place WEST MELBOURNE VIC 3003



#### LEGEND

 Parcel Boundary



#### Action Plan

##### EAO Recommendation

**Do Not Apply EAO**

##### EAO Comment

Site has not identified as being potentially contaminated in accordance with the Potentially Contaminated Land General Practice Note (DSE, 2005)

#### Site Use Summary

**Current Land Use**  
Residential

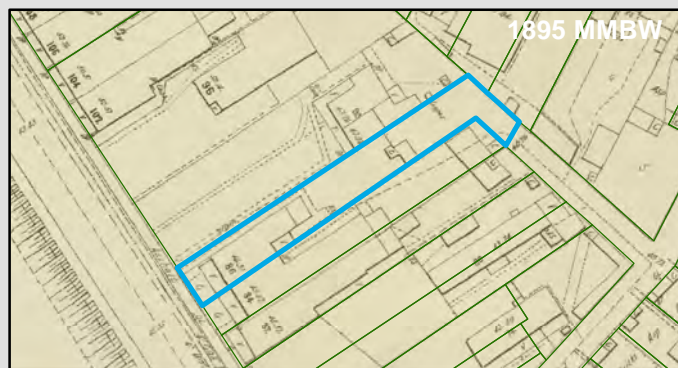
**Historic Land Use**  
Residential

##### Key Information Supporting EAO Decision

Research indicates this site has currently and previously been used for residential purposes.

##### Additional Considerations

#### Resources used to make decision



##### Resources used to make decision

Site inspection, Historical aerial photographs (1968/9 & 1987)

WEST MELBOURNE EAO - AMENDMENT C309 -  
WEST MELBOURNE STRUCTURE PLAN:  
PRELIMINARY LAND CONTAMINATION ASSESSMENT

CITY OF MELBOURNE

**GIS ID: 6561**

##### COPYRIGHT

Aerial Imagery copyright  
City of Melbourne

0 5 10 20 30 40 50 metres

**SCALE (at A4) (BUILDING MAP) 1:1,000**  
DATUM GDA 94, PROJECTION MGA Zone 55

**PROJECT: 18113718**  
**DATE: 27 FEB 2019**  
**DRAWN: TPC**  
**CHECKED: IMK**





CoM Property ID: 108135

84 Railway Place WEST MELBOURNE VIC 3003



#### LEGEND

 Parcel Boundary

#### Action Plan

##### EAO Recommendation

**Do Not Apply EAO**

##### EAO Comment

Site has not identified as being potentially contaminated in accordance with the Potentially Contaminated Land General Practice Note (DSE, 2005)

#### Site Use Summary

**Current Land Use**  
Residential

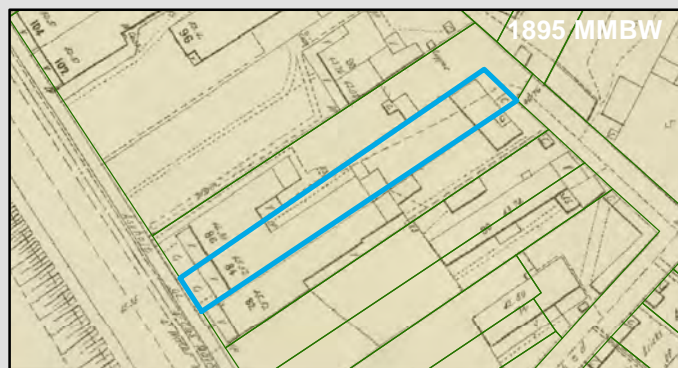
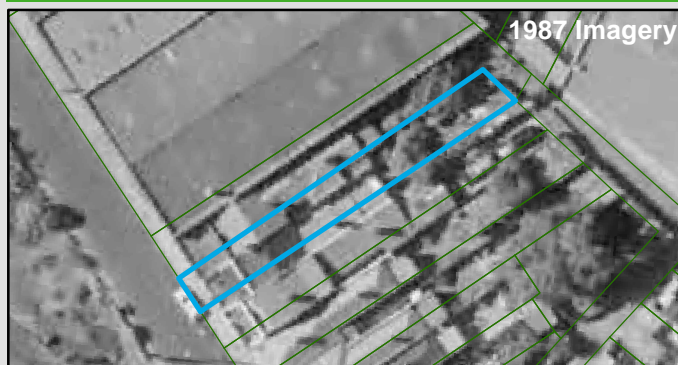
**Historic Land Use**  
Residential

##### Key Information Supporting EAO Decision

Research indicates this site has currently and previously been used for residential purposes.

##### Additional Considerations

#### Resources used to make decision



##### Resources used to make decision

Site inspection, Historical aerial photographs (1968/9 & 1987)

WEST MELBOURNE EAO - AMENDMENT C309 -  
WEST MELBOURNE STRUCTURE PLAN:  
PRELIMINARY LAND CONTAMINATION ASSESSMENT

CITY OF MELBOURNE

**GIS ID: 6562**

##### COPYRIGHT

Aerial Imagery copyright  
City of Melbourne

0 4.5 9 18 27 36 45 metres

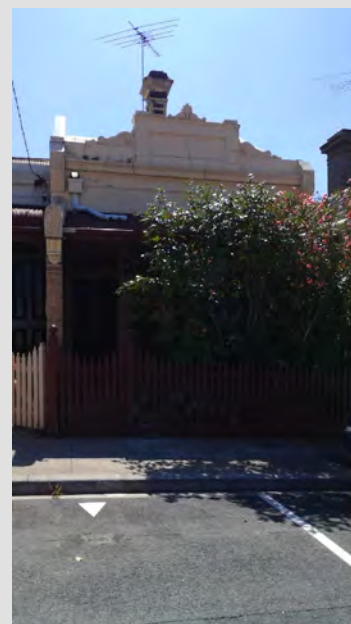
**SCALE (at A4) (BUILDING MAP) 1:900**  
DATUM GDA 94, PROJECTION MGA Zone 55

**PROJECT: 18113718**  
**DATE: 27 FEB 2019**  
**DRAWN: TPC**  
**CHECKED: IMK**



CoM Property ID: 108136

82 Railway Place WEST MELBOURNE VIC 3003



#### LEGEND

 Parcel Boundary

#### Action Plan

##### EAO Recommendation

**Do Not Apply EAO**

##### EAO Comment

Site has not identified as being potentially contaminated in accordance with the Potentially Contaminated Land General Practice Note (DSE, 2005)

#### Site Use Summary

**Current Land Use**  
Residential

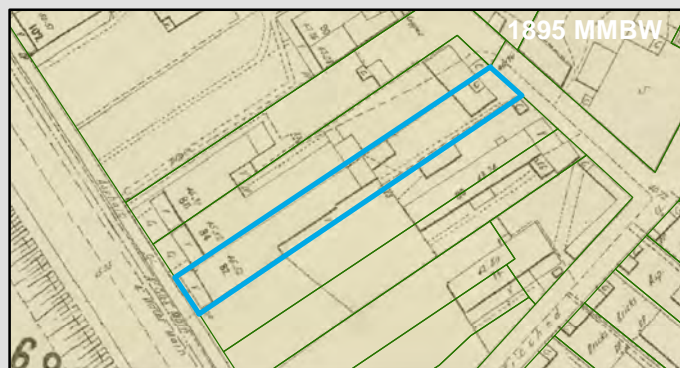
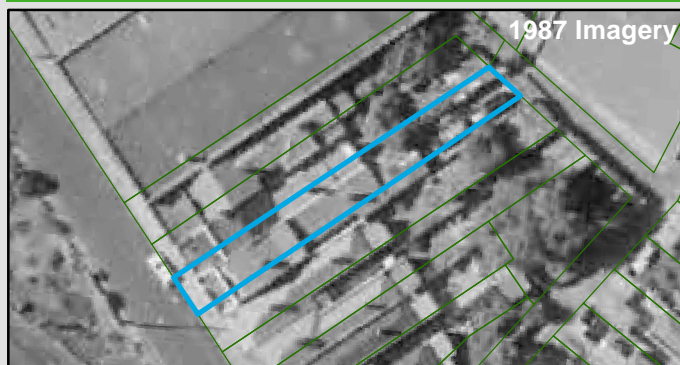
**Historic Land Use**  
Residential

##### Key Information Supporting EAO Decision

Research indicates this site has currently and previously been used for residential purposes.

##### Additional Considerations

#### Resources used to make decision



##### Resources used to make decision

Site inspection, Historical aerial photographs (1968/9 & 1987)

WEST MELBOURNE EAO - AMENDMENT C309 -  
WEST MELBOURNE STRUCTURE PLAN:  
PRELIMINARY LAND CONTAMINATION ASSESSMENT

CITY OF MELBOURNE

**GIS ID: 6563**

##### COPYRIGHT

Aerial Imagery copyright  
City of Melbourne

0 4.5 9 18 27 36 45 metres

**SCALE (at A4) (BUILDING MAP) 1:900**  
DATUM GDA 94, PROJECTION MGA Zone 55

**PROJECT: 18113718**  
**DATE: 27 FEB 2019**  
**DRAWN: TPC**  
**CHECKED: IMK**





CoM Property ID: 108137

80A Railway Place WEST MELBOURNE VIC 3003



#### LEGEND

 Parcel Boundary

#### Action Plan

##### EAO Recommendation

**Do Not Apply EAO**

##### EAO Comment

Site has not identified as being potentially contaminated in accordance with the Potentially Contaminated Land General Practice Note (DSE, 2005)

#### Site Use Summary

**Current Land Use**  
Residential

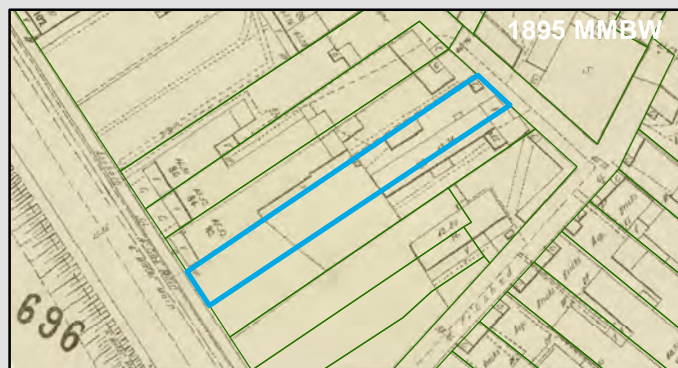
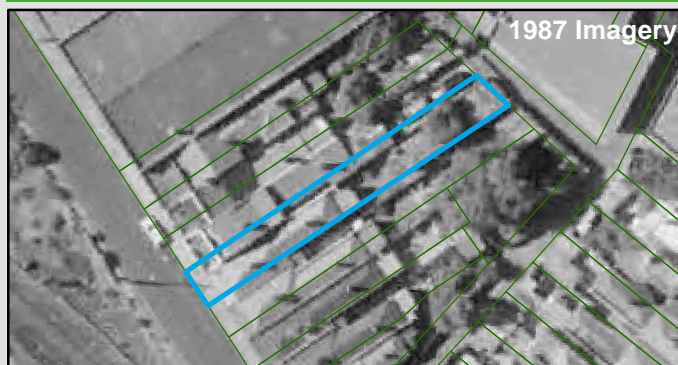
**Historic Land Use**  
Residential

##### Key Information Supporting EAO Decision

Research indicates this site has currently and previously been used for residential purposes.

##### Additional Considerations

#### Resources used to make decision



##### Resources used to make decision

Site inspection, Historical aerial photographs (1968/9 & 1987)

WEST MELBOURNE EAO - AMENDMENT C309 -  
WEST MELBOURNE STRUCTURE PLAN:  
PRELIMINARY LAND CONTAMINATION ASSESSMENT

CITY OF MELBOURNE

**GIS ID: 6564**

##### COPYRIGHT

Aerial Imagery copyright  
City of Melbourne

0 5 10 20 30 40 50 metres

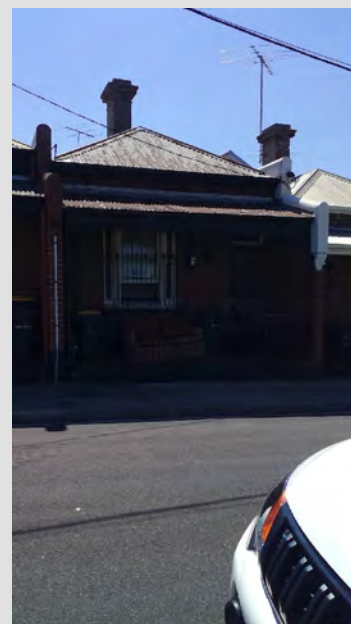
**SCALE (at A4) (BUILDING MAP) 1:1,000**  
DATUM GDA 94, PROJECTION MGA Zone 55

**PROJECT: 18113718**  
**DATE: 27 FEB 2019**  
**DRAWN: TPC**  
**CHECKED: IMK**



CoM Property ID: 108138

80 Railway Place WEST MELBOURNE VIC 3003



#### LEGEND

 Parcel Boundary

#### Action Plan

##### EAO Recommendation

**Do Not Apply EAO**

##### EAO Comment

Site has not identified as being potentially contaminated in accordance with the Potentially Contaminated Land General Practice Note (DSE, 2005)

#### Site Use Summary

**Current Land Use**  
Residential

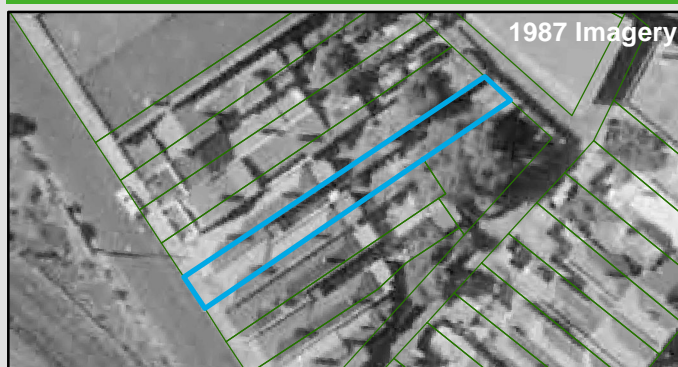
**Historic Land Use**  
Residential

##### Key Information Supporting EAO Decision

Research indicates this site has currently and previously been used for residential purposes.

##### Additional Considerations

#### Resources used to make decision



##### Resources used to make decision

Site inspection, Historical aerial photographs (1968/9 & 1987)

WEST MELBOURNE EAO - AMENDMENT C309 -  
WEST MELBOURNE STRUCTURE PLAN:  
PRELIMINARY LAND CONTAMINATION ASSESSMENT

CITY OF MELBOURNE

**GIS ID: 6569**

##### COPYRIGHT

Aerial Imagery copyright  
City of Melbourne

0 5 10 20 30 40 50 metres

**SCALE (at A4) (BUILDING MAP) 1:1,000**  
DATUM GDA 94, PROJECTION MGA Zone 55

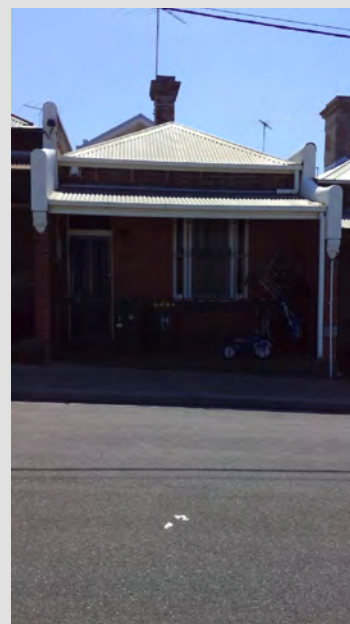
**PROJECT: 18113718**  
**DATE: 27 FEB 2019**  
**DRAWN: TPC**  
**CHECKED: IMK**





CoM Property ID: 108139

78 Railway Place WEST MELBOURNE VIC 3003



#### LEGEND

 Parcel Boundary

### Action Plan

#### EAO Recommendation

**Do Not Apply EAO**

#### EAO Comment

Site has not identified as being potentially contaminated in accordance with the Potentially Contaminated Land General Practice Note (DSE, 2005)

### Site Use Summary

**Current Land Use**  
Residential

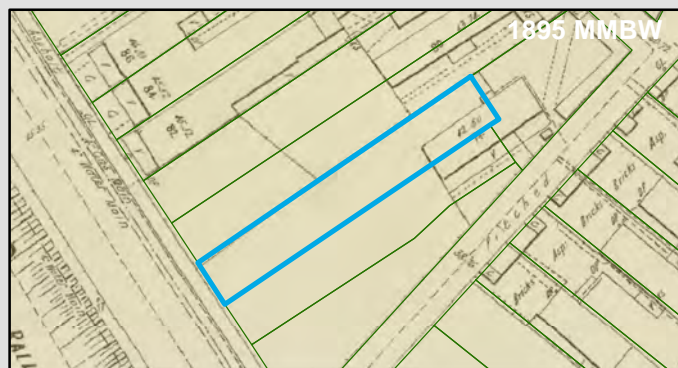
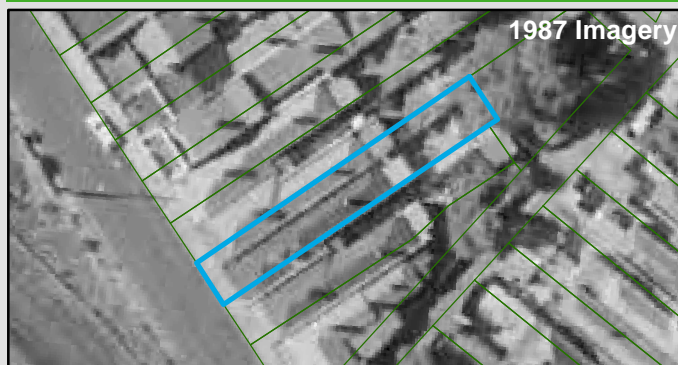
**Historic Land Use**  
Residential

#### Key Information Supporting EAO Decision

Research indicates this site has currently and previously been used for residential purposes.

#### Additional Considerations

### Resources used to make decision



#### Resources used to make decision

Site inspection, Historical aerial photographs (1968/9 & 1987)

WEST MELBOURNE EAO - AMENDMENT C309 -  
WEST MELBOURNE STRUCTURE PLAN:  
PRELIMINARY LAND CONTAMINATION ASSESSMENT

CITY OF MELBOURNE

**GIS ID: 6565**

#### COPYRIGHT

Aerial Imagery copyright  
City of Melbourne

0 4 8 16 24 32 40 metres

**SCALE (at A4) (BUILDING MAP) 1:800**  
DATUM GDA 94, PROJECTION MGA Zone 55

**PROJECT: 18113718**  
**DATE: 27 FEB 2019**  
**DRAWN: TPC**  
**CHECKED: IMK**



Information contained on this drawing is the copyright of Golder Associates Pty. Ltd. Unauthorised use or reproduction of this plan either wholly or in part without written permission infringes copyright. © Golder Associates Pty. Ltd.

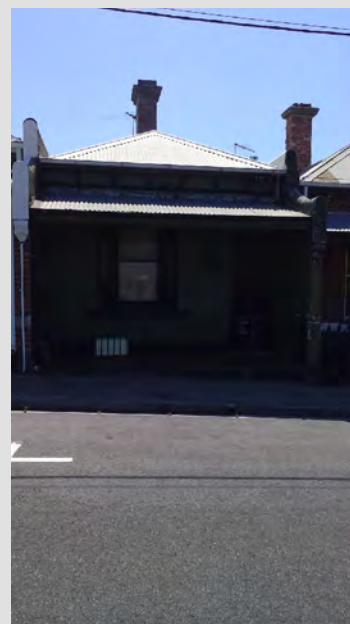
CoM Property ID: 108140

76 Railway Place WEST MELBOURNE VIC 3003



#### LEGEND

 Parcel Boundary



#### Action Plan

##### EAO Recommendation

**Do Not Apply EAO**

##### EAO Comment

Site has not identified as being potentially contaminated in accordance with the Potentially Contaminated Land General Practice Note (DSE, 2005)

#### Site Use Summary

**Current Land Use**  
Residential

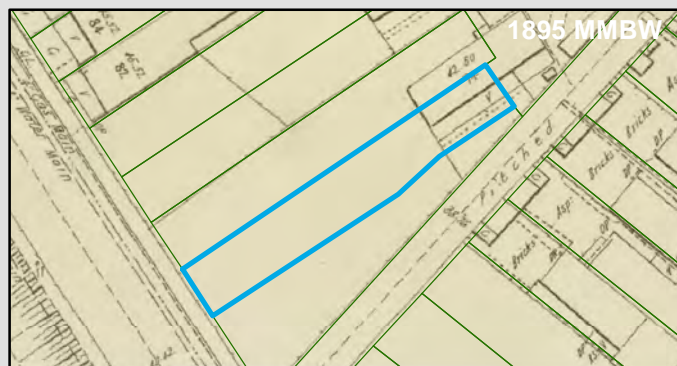
**Historic Land Use**  
Residential

##### Key Information Supporting EAO Decision

Research indicates this site has currently and previously been used for residential purposes.

##### Additional Considerations

#### Resources used to make decision



##### Resources used to make decision

Site inspection, Historical aerial photographs (1968/9 & 1987)

WEST MELBOURNE EAO - AMENDMENT C309 -  
WEST MELBOURNE STRUCTURE PLAN:  
PRELIMINARY LAND CONTAMINATION ASSESSMENT

CITY OF MELBOURNE

**GIS ID: 6566**

##### COPYRIGHT

Aerial Imagery copyright  
City of Melbourne

0 3.5 7 14 21 28 35 metres

**SCALE (at A4) (BUILDING MAP) 1:700**  
DATUM GDA 94, PROJECTION MGA Zone 55

**PROJECT: 18113718**  
**DATE: 27 FEB 2019**  
**DRAWN: TPC**  
**CHECKED: IMK**

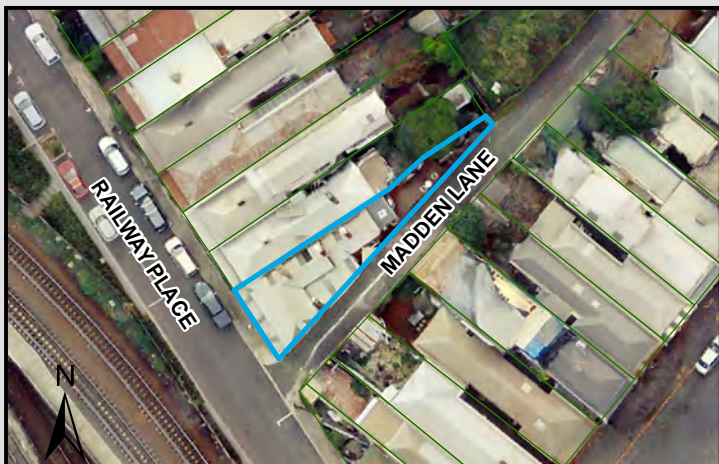




Information contained on this drawing is the copyright of Golder Associates Pty. Ltd. Unauthorised use or reproduction of this plan either wholly or in part without written permission infringes copyright. © Golder Associates Pty. Ltd.

CoM Property ID: 108141

72-74 Railway Place WEST MELBOURNE VIC 3003



#### LEGEND

 Parcel Boundary



#### Action Plan

##### EAO Recommendation

**Do Not Apply EAO**

##### EAO Comment

Site has not identified as being potentially contaminated in accordance with the Potentially Contaminated Land General Practice Note (DSE, 2005)

#### Site Use Summary

**Current Land Use**  
Residential

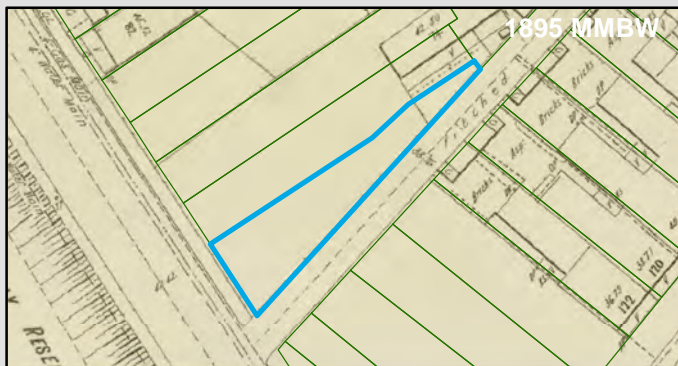
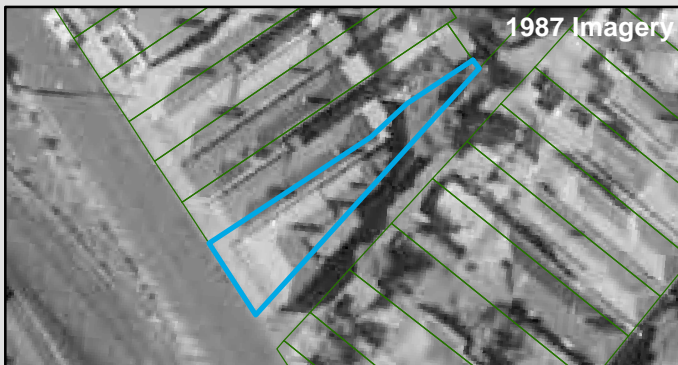
**Historic Land Use**  
Residential

##### Key Information Supporting EAO Decision

Research indicates this site has currently and previously been used for residential purposes.

##### Additional Considerations

#### Resources used to make decision



##### Resources used to make decision

Site inspection, Historical aerial photographs (1968/9 & 1987)

WEST MELBOURNE EAO - AMENDMENT C309 -  
WEST MELBOURNE STRUCTURE PLAN:  
PRELIMINARY LAND CONTAMINATION ASSESSMENT

CITY OF MELBOURNE

**GIS ID: 6567**

##### COPYRIGHT

Aerial Imagery copyright  
City of Melbourne

0 4 8 16 24 32 40 metres

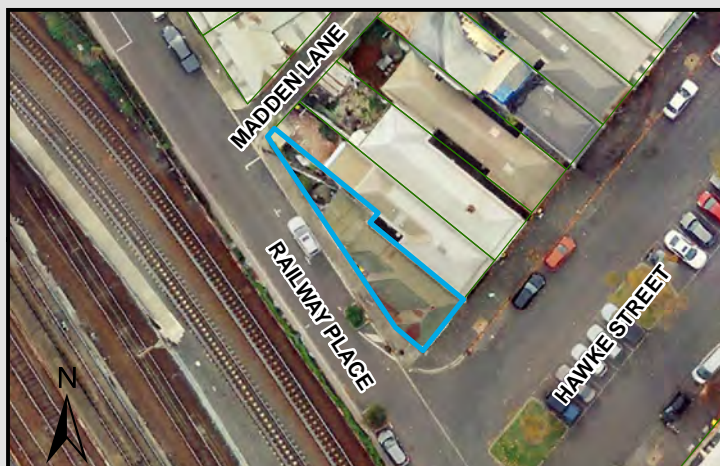
**SCALE (at A4) (BUILDING MAP) 1:800**  
DATUM GDA 94, PROJECTION MGA Zone 55

**PROJECT: 18113718**  
**DATE: 27 FEB 2019**  
**DRAWN: TPC**  
**CHECKED: IMK**



CoM Property ID: 108142

62-70 Railway Place WEST MELBOURNE VIC 3003



#### LEGEND

 Parcel Boundary



#### Action Plan

##### EAO Recommendation

**Do Not Apply EAO**

##### EAO Comment

Site has not identified as being potentially contaminated in accordance with the Potentially Contaminated Land General Practice Note (DSE, 2005)

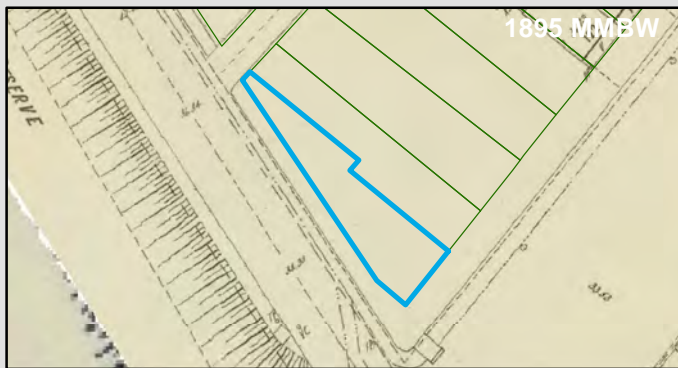
#### Resources used to make decision



#### Site Use Summary

**Current Land Use**  
Residential

**Historic Land Use**  
Residential



#### Key Information Supporting EAO Decision

Research indicates this site has currently and previously been used for residential purposes.

#### Additional Considerations

#### Resources used to make decision

Site inspection, Historical aerial photographs (1968/9 & 1987)

WEST MELBOURNE EAO - AMENDMENT C309 -  
WEST MELBOURNE STRUCTURE PLAN:  
PRELIMINARY LAND CONTAMINATION ASSESSMENT

CITY OF MELBOURNE

**GIS ID: 6568**

#### COPYRIGHT

Aerial Imagery copyright  
City of Melbourne

0 4 8 16 24 32 40 metres

**SCALE (at A4) (BUILDING MAP) 1:800**  
DATUM GDA 94, PROJECTION MGA Zone 55

**PROJECT: 18113718**  
**DATE: 27 FEB 2019**  
**DRAWN: TPC**  
**CHECKED: IMK**





CoM Property ID: 108346

151-157 Roden Street WEST MELBOURNE VIC 3003



#### LEGEND

 Parcel Boundary



#### Action Plan

##### EAO Recommendation

**Do Not Apply EAO**

##### EAO Comment

Site has not identified as being potentially contaminated in accordance with the Potentially Contaminated Land General Practice Note (DSE, 2005)

#### Site Use Summary

**Current Land Use**  
Commercial

**Historic Land Use**  
Residential

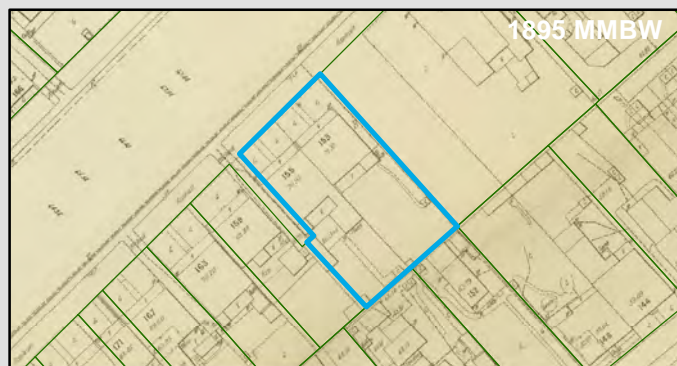
#### Key Information Supporting EAO Decision

No current or previous potentially contaminating land uses identified on site.

#### Additional Considerations

1895 plan indicates residential. 1987 aerial indicates a vacant block.

#### Resources used to make decision



#### Resources used to make decision

Site Inspection,  
MMBW Maps (1895),  
Historical aerial photographs,  
Current aerial photographs (May 2018)

WEST MELBOURNE EAO - AMENDMENT C309 -  
WEST MELBOURNE STRUCTURE PLAN:  
PRELIMINARY LAND CONTAMINATION ASSESSMENT

CITY OF MELBOURNE

**GIS ID: 6656**

#### COPYRIGHT

Aerial Imagery copyright  
City of Melbourne

0 5 10 20 30 40 50 metres

**SCALE (at A4) (BUILDING MAP) 1:1,300**  
DATUM GDA 94, PROJECTION MGA Zone 55

**PROJECT: 18113718**  
**DATE: 27 FEB 2019**  
**DRAWN: TPC**  
**CHECKED: IMK**



CoM Property ID: 108347

159-161 Roden Street WEST MELBOURNE VIC 3003



#### LEGEND

 Parcel Boundary



#### Action Plan

##### EAO Recommendation

**Do Not Apply EAO**

##### EAO Comment

Site has not identified as being potentially contaminated in accordance with the Potentially Contaminated Land General Practice Note (DSE, 2005)

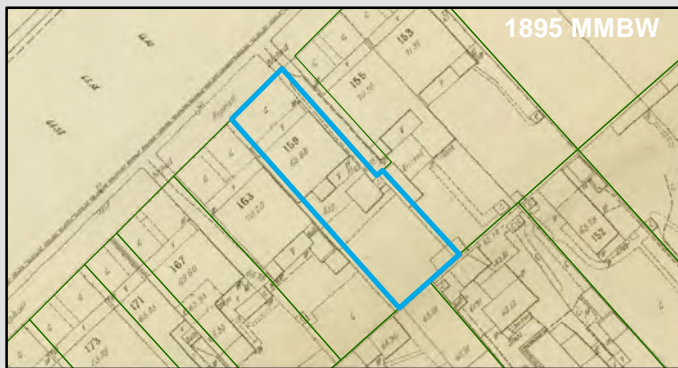
#### Resources used to make decision



#### Site Use Summary

**Current Land Use**  
Residential

**Historic Land Use**  
Residential



#### Key Information Supporting EAO Decision

Research indicates this site has currently and previously been used for residential purposes.

#### Additional Considerations

#### Resources used to make decision

Site inspection, Historical aerial photographs (1968/9 & 1987)

WEST MELBOURNE EAO - AMENDMENT C309 -  
WEST MELBOURNE STRUCTURE PLAN:  
PRELIMINARY LAND CONTAMINATION ASSESSMENT

CITY OF MELBOURNE

**GIS ID: 6657**

#### COPYRIGHT

Aerial Imagery copyright  
City of Melbourne

0 5 10 20 30 40 50 metres

**SCALE (at A4) (BUILDING MAP) 1:1,000**  
DATUM GDA 94, PROJECTION MGA Zone 55

**PROJECT: 18113718**  
**DATE: 27 FEB 2019**  
**DRAWN: TPC**  
**CHECKED: IMK**





Information contained on this drawing is the copyright of Golder Associates Pty. Ltd. Unauthorised use or reproduction of this plan either wholly or in part without written permission infringes copyright. © Golder Associates Pty. Ltd.

CoM Property ID: 108348

163-165 Roden Street WEST MELBOURNE VIC 3003



#### LEGEND

 Parcel Boundary

#### Action Plan

##### EAO Recommendation

**Do Not Apply EAO**

##### EAO Comment

Site has not identified as being potentially contaminated in accordance with the Potentially Contaminated Land General Practice Note (DSE, 2005)

#### Site Use Summary

**Current Land Use**  
Residential

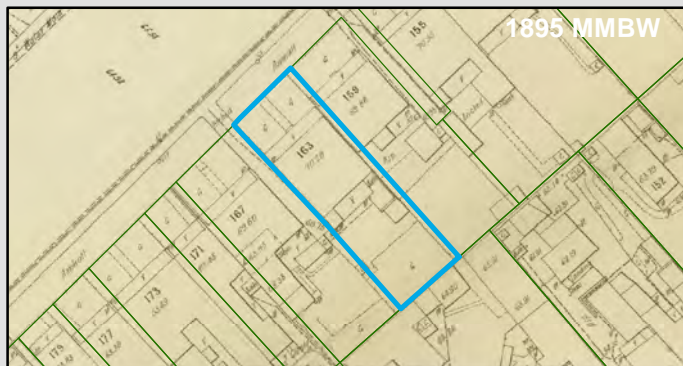
**Historic Land Use**  
Residential

##### Key Information Supporting EAO Decision

Research indicates this site has currently and previously been used for residential purposes.

##### Additional Considerations

#### Resources used to make decision



##### Resources used to make decision

Site inspection, Historical aerial photographs (1968/9 & 1987)

WEST MELBOURNE EAO - AMENDMENT C309 -  
WEST MELBOURNE STRUCTURE PLAN:  
PRELIMINARY LAND CONTAMINATION ASSESSMENT

CITY OF MELBOURNE

**GIS ID: 6658**

##### COPYRIGHT

Aerial Imagery copyright  
City of Melbourne

0 5 10 20 30 40 50 metres

**SCALE (at A4) (BUILDING MAP) 1:1,000**  
DATUM GDA 94, PROJECTION MGA Zone 55

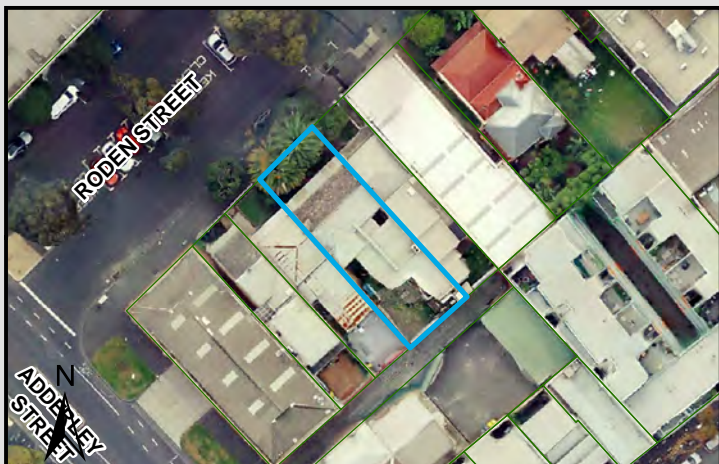
**PROJECT: 18113718**  
**DATE: 27 FEB 2019**  
**DRAWN: TPC**  
**CHECKED: IMK**



Information contained on this drawing is the copyright of Golder Associates Pty. Ltd. Unauthorised use or reproduction of this plan either wholly or in part without written permission infringes copyright. © Golder Associates Pty. Ltd.

CoM Property ID: 108351

173-175 Roden Street WEST MELBOURNE VIC 3003



#### LEGEND

 Parcel Boundary



#### Action Plan

##### EAO Recommendation

**Do Not Apply EAO**

##### EAO Comment

Site has not identified as being potentially contaminated in accordance with the Potentially Contaminated Land General Practice Note (DSE, 2005)

#### Site Use Summary

**Current Land Use**  
Residential

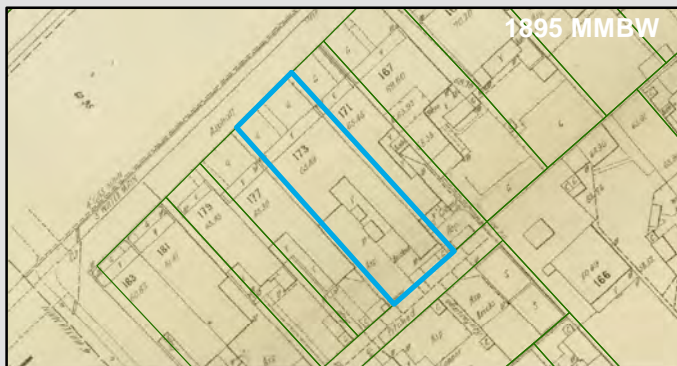
**Historic Land Use**  
Residential

##### Key Information Supporting EAO Decision

Research indicates this site has currently and previously been used for residential purposes.

##### Additional Considerations

#### Resources used to make decision



##### Resources used to make decision

Site inspection, Historical aerial photographs (1968/9 & 1987)

WEST MELBOURNE EAO - AMENDMENT C309 -  
WEST MELBOURNE STRUCTURE PLAN:  
PRELIMINARY LAND CONTAMINATION ASSESSMENT

CITY OF MELBOURNE

GIS ID: 6661

##### COPYRIGHT

Aerial Imagery copyright  
City of Melbourne

0 5 10 20 30 40 50 metres

SCALE (at A4) (BUILDING MAP) 1:1,000  
DATUM GDA 94, PROJECTION MGA Zone 55

PROJECT: 18113718  
DATE: 27 FEB 2019  
DRAWN: TPC  
CHECKED: IMK

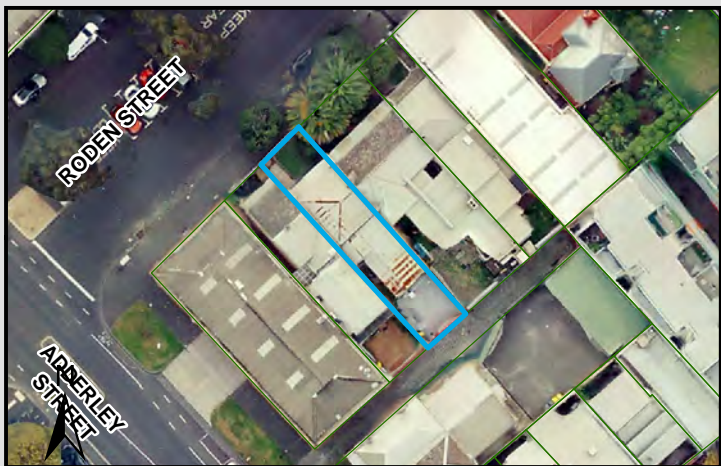




Information contained on this drawing is the copyright of Golder Associates Pty. Ltd. Unauthorised use or reproduction of this plan either wholly or in part without written permission infringes copyright. © Golder Associates Pty. Ltd.

CoM Property ID: 108352

177 Roden Street WEST MELBOURNE VIC 3003



#### LEGEND

 Parcel Boundary



#### Action Plan

##### EAO Recommendation

**Do Not Apply EAO**

##### EAO Comment

Site has not identified as being potentially contaminated in accordance with the Potentially Contaminated Land General Practice Note (DSE, 2005)

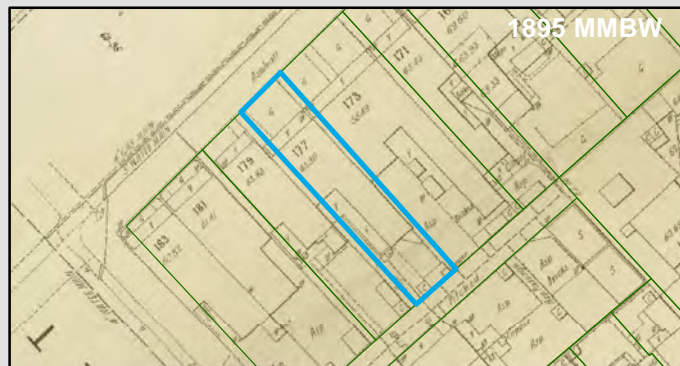
#### Resources used to make decision



#### Site Use Summary

**Current Land Use**  
Residential

**Historic Land Use**  
Residential



#### Key Information Supporting EAO Decision

Research indicates this site has currently and previously been used for residential purposes.

#### Additional Considerations

#### Resources used to make decision

Site inspection, Historical aerial photographs (1968/9 & 1987)

WEST MELBOURNE EAO - AMENDMENT C309 -  
WEST MELBOURNE STRUCTURE PLAN:  
PRELIMINARY LAND CONTAMINATION ASSESSMENT

CITY OF MELBOURNE

GIS ID: 6662

#### COPYRIGHT

Aerial Imagery copyright  
City of Melbourne

0 4.5 9 18 27 36 45 metres

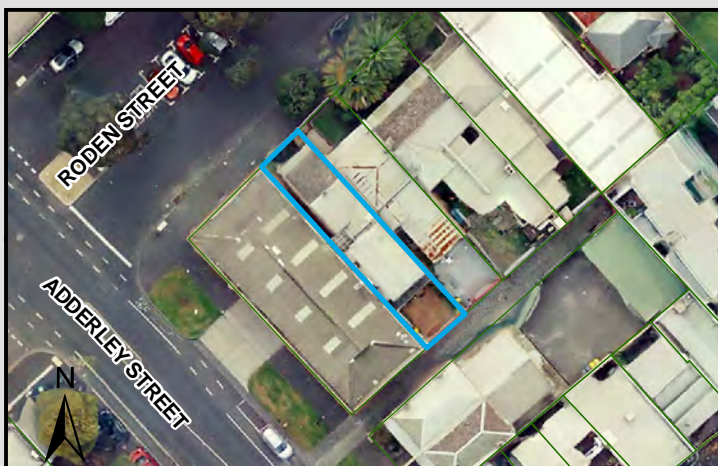
SCALE (at A4) (BUILDING MAP) 1:900  
DATUM GDA 94, PROJECTION MGA Zone 55

PROJECT: 18113718  
DATE: 27 FEB 2019  
DRAWN: TPC  
CHECKED: IMK



CoM Property ID: 108353

179 Roden Street WEST MELBOURNE VIC 3003



#### LEGEND

 Parcel Boundary

#### Action Plan

##### EAO Recommendation

**Do Not Apply EAO**

##### EAO Comment

Site has not identified as being potentially contaminated in accordance with the Potentially Contaminated Land General Practice Note (DSE, 2005)

#### Site Use Summary

**Current Land Use**  
Residential

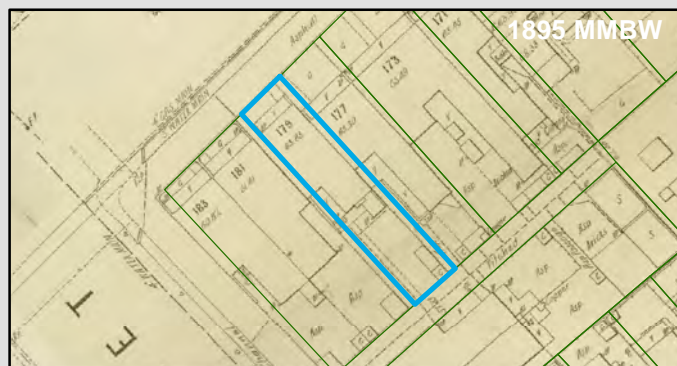
**Historic Land Use**  
Residential

##### Key Information Supporting EAO Decision

Research indicates this site has currently and previously been used for residential purposes.

##### Additional Considerations

#### Resources used to make decision



##### Resources used to make decision

Site inspection, Historical aerial photographs (1968/9 & 1987)

WEST MELBOURNE EAO - AMENDMENT C309 -  
WEST MELBOURNE STRUCTURE PLAN:  
PRELIMINARY LAND CONTAMINATION ASSESSMENT

CITY OF MELBOURNE

**GIS ID: 6663**

##### COPYRIGHT

Aerial Imagery copyright  
City of Melbourne

0 4.5 9 18 27 36 45 metres

**SCALE (at A4) (BUILDING MAP) 1:900**  
DATUM GDA 94, PROJECTION MGA Zone 55

**PROJECT: 18113718**  
**DATE: 27 FEB 2019**  
**DRAWN: TPC**  
**CHECKED: IMK**

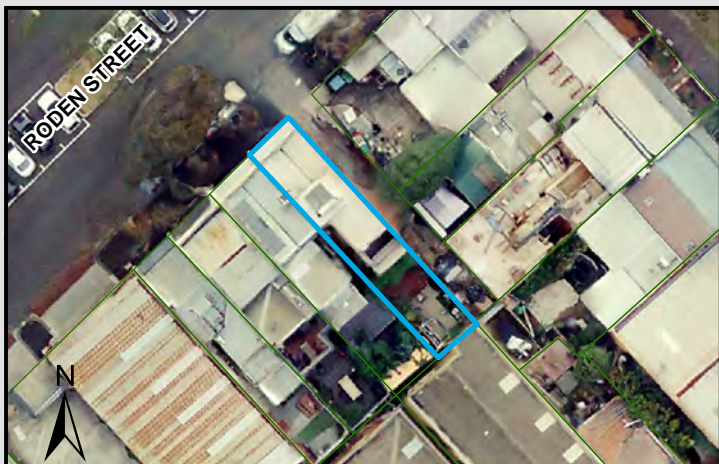




Information contained on this drawing is the copyright of Golder Associates Pty. Ltd. Unauthorised use or reproduction of this plan either wholly or in part without written permission infringes copyright. © Golder Associates Pty. Ltd.

CoM Property ID: 108354

197 Roden Street WEST MELBOURNE VIC 3003



#### LEGEND

 Parcel Boundary



### Action Plan

#### EAO Recommendation

**Do Not Apply EAO**

#### EAO Comment

Site has not identified as being potentially contaminated in accordance with the Potentially Contaminated Land General Practice Note (DSE, 2005)

### Site Use Summary

**Current Land Use**  
Residential

**Historic Land Use**  
Residential

#### Key Information Supporting EAO Decision

Research indicates this site has currently and previously been used for residential purposes.

#### Additional Considerations

### Resources used to make decision



#### Resources used to make decision

Site inspection, Historical aerial photographs (1968/9 & 1987)

WEST MELBOURNE EAO - AMENDMENT C309 -  
WEST MELBOURNE STRUCTURE PLAN:  
PRELIMINARY LAND CONTAMINATION ASSESSMENT

CITY OF MELBOURNE

**GIS ID: 6612**

#### COPYRIGHT

Aerial Imagery copyright  
City of Melbourne

0 3.5 7 14 21 28 35 metres

**SCALE (at A4) (BUILDING MAP) 1:700**  
DATUM GDA 94, PROJECTION MGA Zone 55

**PROJECT: 18113718**  
**DATE: 27 FEB 2019**  
**DRAWN: TPC**  
**CHECKED: IMK**



CoM Property ID: 108355

199 Roden Street WEST MELBOURNE VIC 3003



#### LEGEND

 Parcel Boundary

#### Action Plan

##### EAO Recommendation

**Do Not Apply EAO**

##### EAO Comment

Site has not identified as being potentially contaminated in accordance with the Potentially Contaminated Land General Practice Note (DSE, 2005)

#### Site Use Summary

**Current Land Use**  
Residential

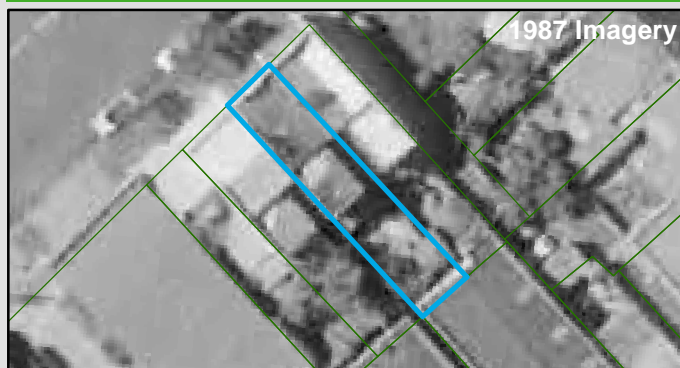
**Historic Land Use**  
Residential

#### Key Information Supporting EAO Decision

Research indicates this site has currently and previously been used for residential purposes.

#### Additional Considerations

#### Resources used to make decision



#### Resources used to make decision

Site inspection, Historical aerial photographs (1968/9 & 1987)

WEST MELBOURNE EAO - AMENDMENT C309 -  
WEST MELBOURNE STRUCTURE PLAN:  
PRELIMINARY LAND CONTAMINATION ASSESSMENT

CITY OF MELBOURNE

**GIS ID: 6613**

#### COPYRIGHT

Aerial Imagery copyright  
City of Melbourne

0 3.5 7 14 21 28 35 metres

**SCALE (at A4) (BUILDING MAP) 1:700**  
DATUM GDA 94, PROJECTION MGA Zone 55

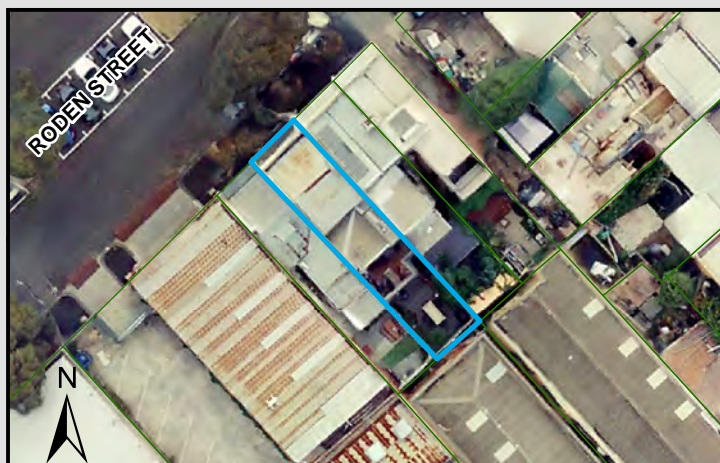
**PROJECT: 18113718**  
**DATE: 27 FEB 2019**  
**DRAWN: TPC**  
**CHECKED: IMK**





CoM Property ID: 108356

201 Roden Street WEST MELBOURNE VIC 3003



#### LEGEND

 Parcel Boundary

#### Action Plan

##### EAO Recommendation

**Do Not Apply EAO**

##### EAO Comment

Site has not identified as being potentially contaminated in accordance with the Potentially Contaminated Land General Practice Note (DSE, 2005)

#### Site Use Summary

**Current Land Use**  
Residential

**Historic Land Use**  
Residential

#### Key Information Supporting EAO Decision

Research indicates this site has currently and previously been used for residential purposes.

#### Additional Considerations

#### Resources used to make decision



#### Resources used to make decision

Site inspection, Historical aerial photographs (1968/9 & 1987)

WEST MELBOURNE EAO - AMENDMENT C309 -  
WEST MELBOURNE STRUCTURE PLAN:  
PRELIMINARY LAND CONTAMINATION ASSESSMENT

CITY OF MELBOURNE

**GIS ID: 6614**

#### COPYRIGHT

Aerial Imagery copyright  
City of Melbourne

0 3.5 7 14 21 28 35 metres

**SCALE (at A4) (BUILDING MAP) 1:700**  
DATUM GDA 94, PROJECTION MGA Zone 55

**PROJECT: 18113718**  
**DATE: 27 FEB 2019**  
**DRAWN: TPC**  
**CHECKED: IMK**



Information contained on this drawing is the copyright of Golder Associates Pty. Ltd. Unauthorised use or reproduction of this plan either wholly or in part without written permission infringes copyright. © Golder Associates Pty. Ltd.

CoM Property ID: 108357

203 Roden Street WEST MELBOURNE VIC 3003



#### LEGEND

 Parcel Boundary



#### Action Plan

##### EAO Recommendation

**Do Not Apply EAO**

##### EAO Comment

Site has not identified as being potentially contaminated in accordance with the Potentially Contaminated Land General Practice Note (DSE, 2005)

#### Site Use Summary

**Current Land Use**  
Residential

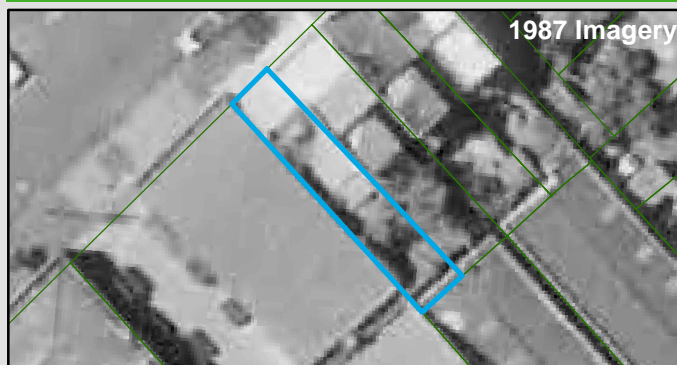
**Historic Land Use**  
Residential

##### Key Information Supporting EAO Decision

Research indicates this site has currently and previously been used for residential purposes.

##### Additional Considerations

#### Resources used to make decision



##### Resources used to make decision

Site inspection, Historical aerial photographs (1968/9 & 1987)

WEST MELBOURNE EAO - AMENDMENT C309 -  
WEST MELBOURNE STRUCTURE PLAN:  
PRELIMINARY LAND CONTAMINATION ASSESSMENT

CITY OF MELBOURNE

**GIS ID: 6615**

##### COPYRIGHT

Aerial Imagery copyright  
City of Melbourne

0 3.5 7 14 21 28 35 metres

**SCALE (at A4) (BUILDING MAP) 1:700**  
DATUM GDA 94, PROJECTION MGA Zone 55

**PROJECT: 18113718**  
**DATE: 27 FEB 2019**  
**DRAWN: TPC**  
**CHECKED: IMK**





Information contained on this drawing is the copyright of Golder Associates Pty. Ltd. Unauthorised use or reproduction of this plan either wholly or in part without written permission infringes copyright. © Golder Associates Pty. Ltd.

CoM Property ID: 108370

156 Roden Street WEST MELBOURNE VIC 3003



#### LEGEND

 Parcel Boundary

#### Action Plan

##### EAO Recommendation

**Do Not Apply EAO**

##### EAO Comment

Site has not identified as being potentially contaminated in accordance with the Potentially Contaminated Land General Practice Note (DSE, 2005)

#### Site Use Summary

**Current Land Use**  
Residential

**Historic Land Use**  
Residential

##### Key Information Supporting EAO Decision

Research indicates this site has currently and previously been used for residential purposes.

##### Additional Considerations

#### Resources used to make decision



##### Resources used to make decision

Site inspection, Historical aerial photographs (1968/9 & 1987)

WEST MELBOURNE EAO - AMENDMENT C309 -  
WEST MELBOURNE STRUCTURE PLAN:  
PRELIMINARY LAND CONTAMINATION ASSESSMENT

CITY OF MELBOURNE

**GIS ID: 6604**

##### COPYRIGHT

Aerial Imagery copyright  
City of Melbourne

0 4 8 16 24 32 40 metres

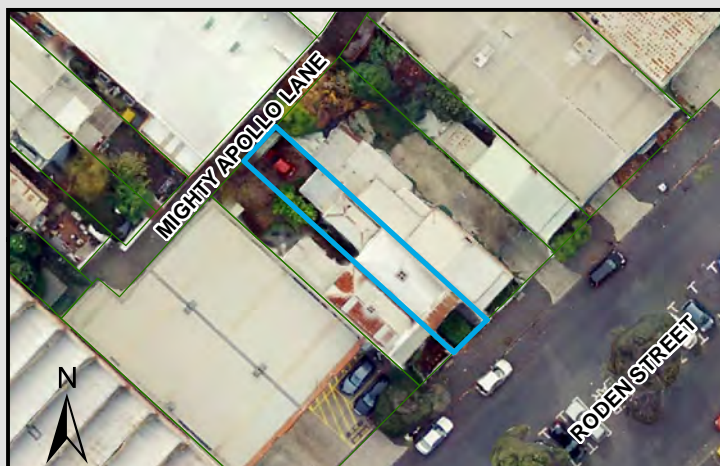
**SCALE (at A4) (BUILDING MAP) 1:800**  
DATUM GDA 94, PROJECTION MGA Zone 55

**PROJECT: 18113718**  
**DATE: 27 FEB 2019**  
**DRAWN: TPC**  
**CHECKED: IMK**



CoM Property ID: 108371

154 Roden Street WEST MELBOURNE VIC 3003



#### LEGEND

 Parcel Boundary

#### Action Plan

##### EAO Recommendation

**Do Not Apply EAO**

##### EAO Comment

Site has not identified as being potentially contaminated in accordance with the Potentially Contaminated Land General Practice Note (DSE, 2005)

#### Site Use Summary

**Current Land Use**  
Residential

**Historic Land Use**  
Residential

#### Key Information Supporting EAO Decision

Research indicates this site has currently and previously been used for residential purposes.

#### Additional Considerations

#### Resources used to make decision



#### Resources used to make decision

Site inspection, Historical aerial photographs (1968/9 & 1987)

WEST MELBOURNE EAO - AMENDMENT C309 -  
WEST MELBOURNE STRUCTURE PLAN:  
PRELIMINARY LAND CONTAMINATION ASSESSMENT

CITY OF MELBOURNE

**GIS ID: 6605**

#### COPYRIGHT

Aerial Imagery copyright  
City of Melbourne

0 4 8 16 24 32 40 metres

**SCALE (at A4) (BUILDING MAP) 1:800**  
DATUM GDA 94, PROJECTION MGA Zone 55

**PROJECT: 18113718**  
**DATE: 27 FEB 2019**  
**DRAWN: TPC**  
**CHECKED: IMK**





CoM Property ID: 108372

150-152 Roden Street WEST MELBOURNE VIC 3003



#### LEGEND

 Parcel Boundary



#### Action Plan

##### EAO Recommendation

**Do Not Apply EAO**

##### EAO Comment

Site has not identified as being potentially contaminated in accordance with the Potentially Contaminated Land General Practice Note (DSE, 2005)

#### Site Use Summary

**Current Land Use**  
Residential

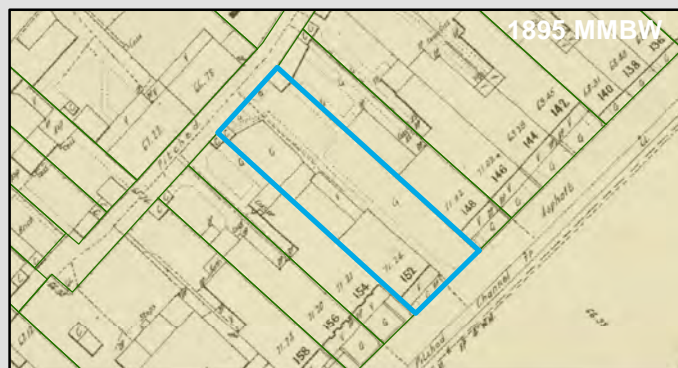
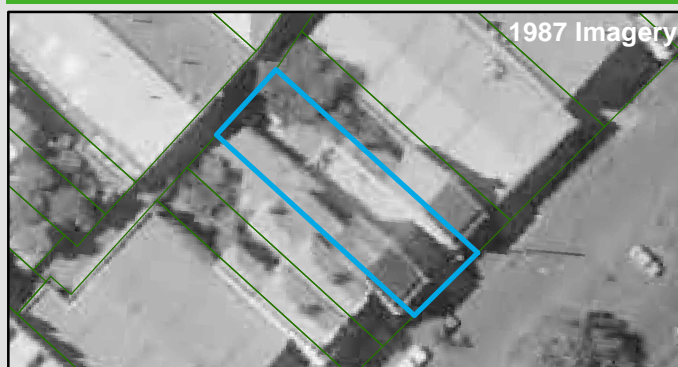
**Historic Land Use**  
Residential

##### Key Information Supporting EAO Decision

Research indicates this site has currently and previously been used for residential purposes.

##### Additional Considerations

#### Resources used to make decision



##### Resources used to make decision

Site inspection, Historical aerial photographs (1968/9 & 1987)

WEST MELBOURNE EAO - AMENDMENT C309 -  
WEST MELBOURNE STRUCTURE PLAN:  
PRELIMINARY LAND CONTAMINATION ASSESSMENT

CITY OF MELBOURNE

**GIS ID: 6606**

##### COPYRIGHT

Aerial Imagery copyright  
City of Melbourne

0 4.5 9 18 27 36 45 metres

**SCALE (at A4) (BUILDING MAP) 1:900**  
DATUM GDA 94, PROJECTION MGA Zone 55

**PROJECT: 18113718**  
**DATE: 27 FEB 2019**  
**DRAWN: TPC**  
**CHECKED: IMK**



CoM Property ID: 108373

148 Roden Street WEST MELBOURNE VIC 3003



#### LEGEND

 Parcel Boundary

#### Action Plan

##### EAO Recommendation

**Do Not Apply EAO**

##### EAO Comment

Site has not identified as being potentially contaminated in accordance with the Potentially Contaminated Land General Practice Note (DSE, 2005)

#### Site Use Summary

**Current Land Use**  
Residential

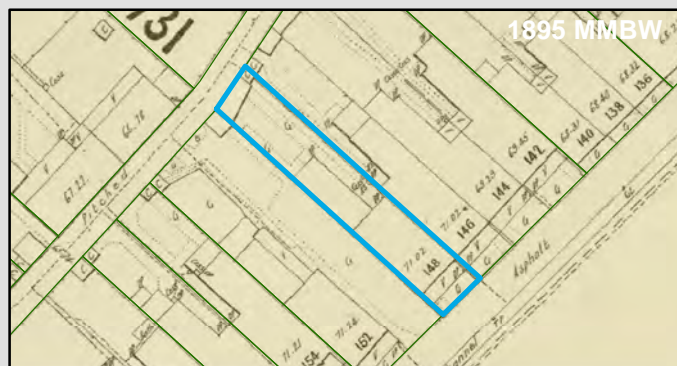
**Historic Land Use**  
Residential

##### Key Information Supporting EAO Decision

Research indicates this site has currently and previously been used for residential purposes.

##### Additional Considerations

#### Resources used to make decision



##### Resources used to make decision

Site inspection, Historical aerial photographs (1968/9 & 1987)

WEST MELBOURNE EAO - AMENDMENT C309 -  
WEST MELBOURNE STRUCTURE PLAN:  
PRELIMINARY LAND CONTAMINATION ASSESSMENT

CITY OF MELBOURNE

**GIS ID: 6607**

##### COPYRIGHT

Aerial Imagery copyright  
City of Melbourne

0 4 8 16 24 32 40 metres

**SCALE (at A4) (BUILDING MAP) 1:800**  
DATUM GDA 94, PROJECTION MGA Zone 55

**PROJECT: 18113718**  
**DATE: 27 FEB 2019**  
**DRAWN: TPC**  
**CHECKED: IMK**





Information contained on this drawing is the copyright of Golder Associates Pty. Ltd. Unauthorised use or reproduction of this plan either wholly or in part without written permission infringes copyright. © Golder Associates Pty. Ltd.

CoM Property ID: 108376

132-134 Roden Street WEST MELBOURNE VIC 3003



#### LEGEND

 Parcel Boundary

#### Action Plan

##### EAO Recommendation

**Do Not Apply EAO**

##### EAO Comment

Site has not identified as being potentially contaminated in accordance with the Potentially Contaminated Land General Practice Note (DSE, 2005)

#### Site Use Summary

**Current Land Use**  
Residential

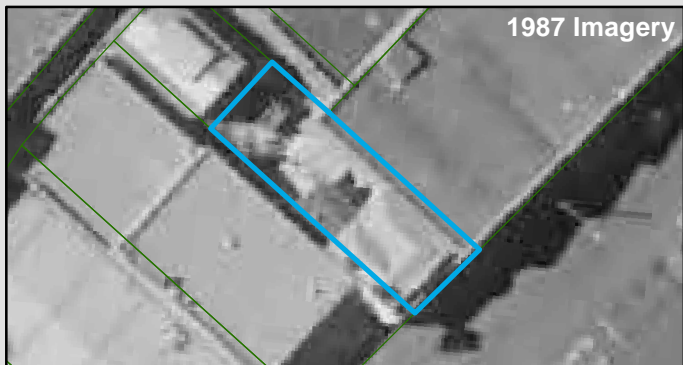
**Historic Land Use**  
Residential

##### Key Information Supporting EAO Decision

Research indicates this site has currently and previously been used for residential purposes.

##### Additional Considerations

#### Resources used to make decision



##### Resources used to make decision

Site inspection, Historical aerial photographs (1968/9 & 1987)

WEST MELBOURNE EAO - AMENDMENT C309 -  
WEST MELBOURNE STRUCTURE PLAN:  
PRELIMINARY LAND CONTAMINATION ASSESSMENT

CITY OF MELBOURNE

**GIS ID: 6610**

##### COPYRIGHT

Aerial Imagery copyright  
City of Melbourne

0 3.5 7 14 21 28 35 metres

**SCALE (at A4) (BUILDING MAP) 1:700**  
DATUM GDA 94, PROJECTION MGA Zone 55

**PROJECT: 18113718**  
**DATE: 27 FEB 2019**  
**DRAWN: TPC**  
**CHECKED: IMK**



CoM Property ID: 108378

96 Roden Street WEST MELBOURNE VIC 3003



#### LEGEND

 Parcel Boundary

#### Action Plan

##### EAO Recommendation

**Do Not Apply EAO**

##### EAO Comment

Site has not identified as being potentially contaminated in accordance with the Potentially Contaminated Land General Practice Note (DSE, 2005)

#### Site Use Summary

**Current Land Use**  
Residential

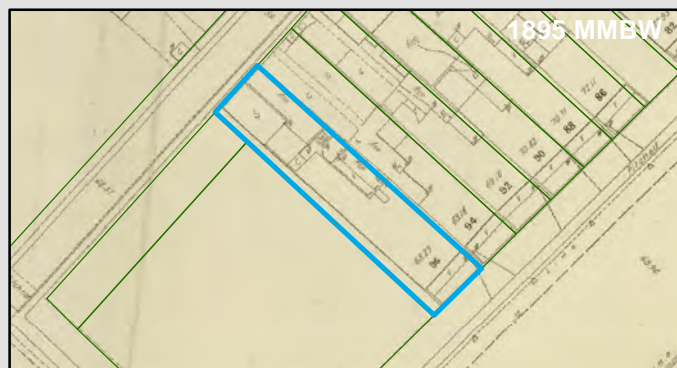
**Historic Land Use**  
Residential

##### Key Information Supporting EAO Decision

Research indicates this site has currently and previously been used for residential purposes.

##### Additional Considerations

#### Resources used to make decision



##### Resources used to make decision

Site inspection, Historical aerial photographs (1968/9 & 1987)

WEST MELBOURNE EAO - AMENDMENT C309 -  
WEST MELBOURNE STRUCTURE PLAN:  
PRELIMINARY LAND CONTAMINATION ASSESSMENT

CITY OF MELBOURNE

**GIS ID: 8691**

##### COPYRIGHT

Aerial Imagery copyright  
City of Melbourne

0 5 10 20 30 40 50 metres

**SCALE (at A4) (BUILDING MAP) 1:1,000**  
DATUM GDA 94, PROJECTION MGA Zone 55

**PROJECT: 18113718**  
**DATE: 27 FEB 2019**  
**DRAWN: TPC**  
**CHECKED: IMK**





Information contained on this drawing is the copyright of Golder Associates Pty. Ltd. Unauthorised use or reproduction of this plan either wholly or in part without written permission infringes copyright. © Golder Associates Pty. Ltd.

CoM Property ID: 108379

94 Roden Street WEST MELBOURNE VIC 3003



LEGEND

 Parcel Boundary



Action Plan

EAO Recommendation

**Do Not Apply EAO**

EAO Comment

Site has not identified as being potentially contaminated in accordance with the Potentially Contaminated Land General Practice Note (DSE, 2005)

Site Use Summary

**Current Land Use**  
Residential

**Historic Land Use**  
Residential

Key Information Supporting EAO Decision

Research indicates this site has currently and previously been used for residential purposes.

Additional Considerations

Resources used to make decision



Resources used to make decision

Site inspection, Historical aerial photographs (1968/9 & 1987)

WEST MELBOURNE EAO - AMENDMENT C309 -  
WEST MELBOURNE STRUCTURE PLAN:  
PRELIMINARY LAND CONTAMINATION ASSESSMENT

CITY OF MELBOURNE

**GIS ID: 8692**

COPYRIGHT

Aerial Imagery copyright  
City of Melbourne

0 5 10 20 30 40 50 metres

**SCALE (at A4) (BUILDING MAP) 1:1,000**  
DATUM GDA 94, PROJECTION MGA Zone 55

**PROJECT: 18113718**  
**DATE: 27 FEB 2019**  
**DRAWN: TPC**  
**CHECKED: IMK**



CoM Property ID: 108380

92 Roden Street WEST MELBOURNE VIC 3003



#### LEGEND

 Parcel Boundary



#### Action Plan

##### EAO Recommendation

**Do Not Apply EAO**

##### EAO Comment

Site has not identified as being potentially contaminated in accordance with the Potentially Contaminated Land General Practice Note (DSE, 2005)

#### Site Use Summary

**Current Land Use**  
Residential

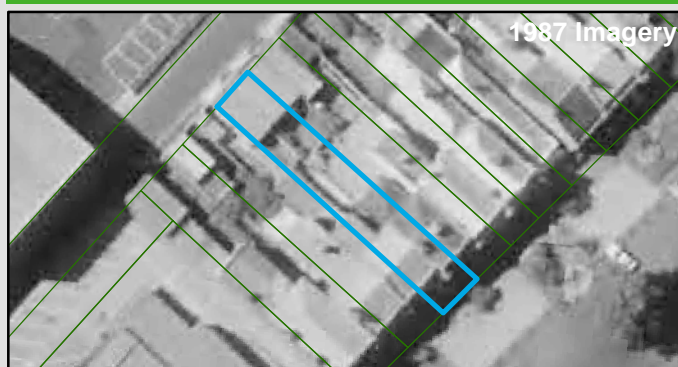
**Historic Land Use**  
Residential

##### Key Information Supporting EAO Decision

Research indicates this site has currently and previously been used for residential purposes.

##### Additional Considerations

#### Resources used to make decision



##### Resources used to make decision

Site inspection, Historical aerial photographs (1968/9 & 1987)

WEST MELBOURNE EAO - AMENDMENT C309 -  
WEST MELBOURNE STRUCTURE PLAN:  
PRELIMINARY LAND CONTAMINATION ASSESSMENT

CITY OF MELBOURNE

**GIS ID: 8693**

##### COPYRIGHT

Aerial Imagery copyright  
City of Melbourne

0 5 10 20 30 40 50 metres

**SCALE (at A4) (BUILDING MAP) 1:1,000**  
DATUM GDA 94, PROJECTION MGA Zone 55

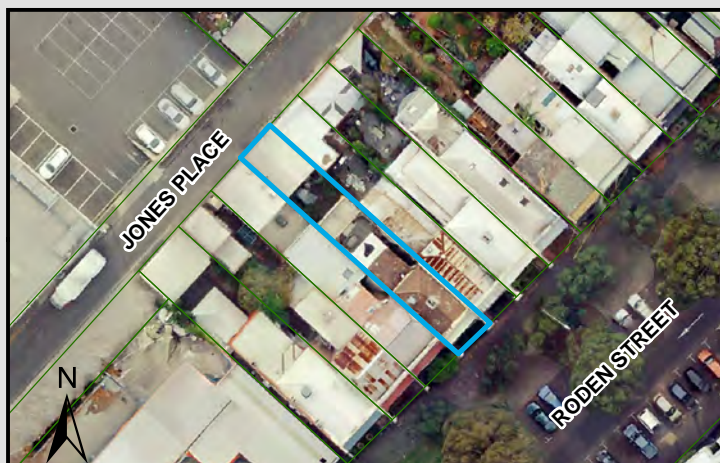
**PROJECT: 18113718**  
**DATE: 27 FEB 2019**  
**DRAWN: TPC**  
**CHECKED: IMK**





CoM Property ID: 108381

90 Roden Street WEST MELBOURNE VIC 3003



#### LEGEND

 Parcel Boundary



#### Action Plan

##### EAO Recommendation

**Do Not Apply EAO**

##### EAO Comment

Site has not identified as being potentially contaminated in accordance with the Potentially Contaminated Land General Practice Note (DSE, 2005)

#### Site Use Summary

**Current Land Use**  
Residential

**Historic Land Use**  
Residential

##### Key Information Supporting EAO Decision

Research indicates this site has currently and previously been used for residential purposes.

##### Additional Considerations

#### Resources used to make decision



##### Resources used to make decision

Site inspection, Historical aerial photographs (1968/9 & 1987)

WEST MELBOURNE EAO - AMENDMENT C309 -  
WEST MELBOURNE STRUCTURE PLAN:  
PRELIMINARY LAND CONTAMINATION ASSESSMENT

CITY OF MELBOURNE

**GIS ID: 8694**

##### COPYRIGHT

Aerial Imagery copyright  
City of Melbourne

0 5 10 20 30 40 50 metres

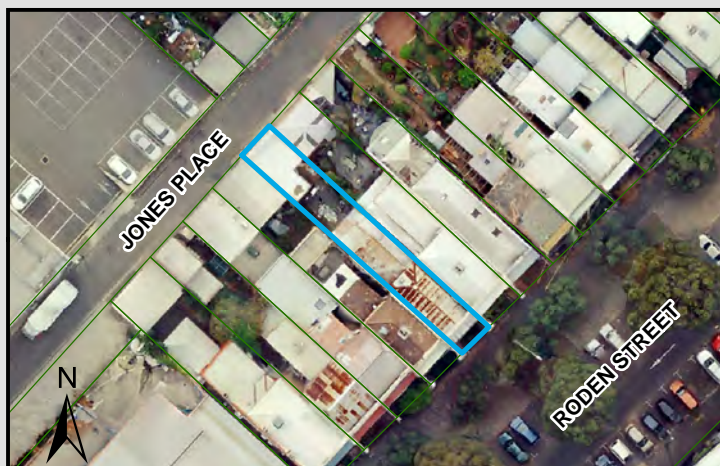
**SCALE (at A4) (BUILDING MAP) 1:1,000**  
DATUM GDA 94, PROJECTION MGA Zone 55

**PROJECT: 18113718**  
**DATE: 27 FEB 2019**  
**DRAWN: TPC**  
**CHECKED: IMK**



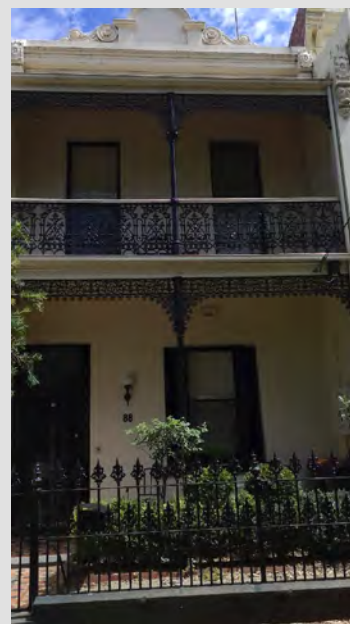
CoM Property ID: 108382

88 Roden Street WEST MELBOURNE VIC 3003



#### LEGEND

 Parcel Boundary



#### Action Plan

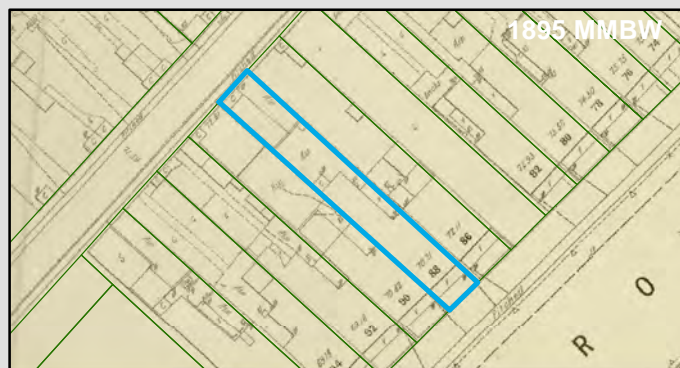
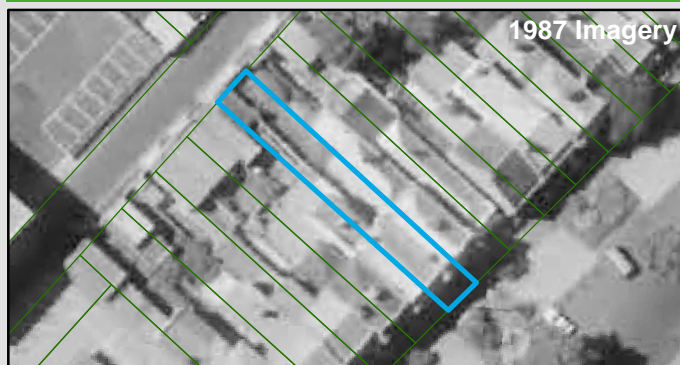
##### EAO Recommendation

**Do Not Apply EAO**

##### EAO Comment

Site has not identified as being potentially contaminated in accordance with the Potentially Contaminated Land General Practice Note (DSE, 2005)

#### Resources used to make decision



#### Site Use Summary

**Current Land Use**  
Residential

**Historic Land Use**  
Residential

##### Key Information Supporting EAO Decision

Research indicates this site has currently and previously been used for residential purposes.

##### Additional Considerations

##### Resources used to make decision

Site inspection, Historical aerial photographs (1968/9 & 1987)

WEST MELBOURNE EAO - AMENDMENT C309 -  
WEST MELBOURNE STRUCTURE PLAN:  
PRELIMINARY LAND CONTAMINATION ASSESSMENT

CITY OF MELBOURNE

**GIS ID: 8695**

##### COPYRIGHT

Aerial Imagery copyright  
City of Melbourne

0 5 10 20 30 40 50 metres

**SCALE (at A4) (BUILDING MAP) 1:1,000**  
DATUM GDA 94, PROJECTION MGA Zone 55

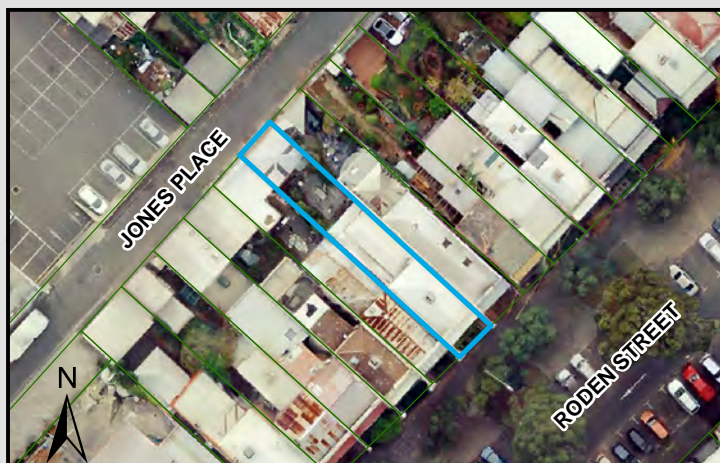
**PROJECT: 18113718**  
**DATE: 27 FEB 2019**  
**DRAWN: TPC**  
**CHECKED: IMK**





CoM Property ID: 108383

86 Roden Street WEST MELBOURNE VIC 3003



#### LEGEND

 Parcel Boundary

#### Action Plan

##### EAO Recommendation

**Do Not Apply EAO**

##### EAO Comment

Site has not identified as being potentially contaminated in accordance with the Potentially Contaminated Land General Practice Note (DSE, 2005)

#### Site Use Summary

**Current Land Use**  
Residential

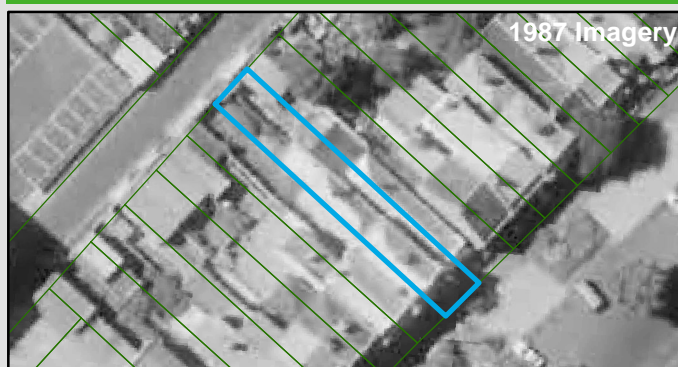
**Historic Land Use**  
Residential

##### Key Information Supporting EAO Decision

Research indicates this site has currently and previously been used for residential purposes.

##### Additional Considerations

#### Resources used to make decision



##### Resources used to make decision

Site inspection, Historical aerial photographs (1968/9 & 1987)

WEST MELBOURNE EAO - AMENDMENT C309 -  
WEST MELBOURNE STRUCTURE PLAN:  
PRELIMINARY LAND CONTAMINATION ASSESSMENT

CITY OF MELBOURNE

**GIS ID: 8696**

##### COPYRIGHT

Aerial Imagery copyright  
City of Melbourne

0 5 10 20 30 40 50 metres

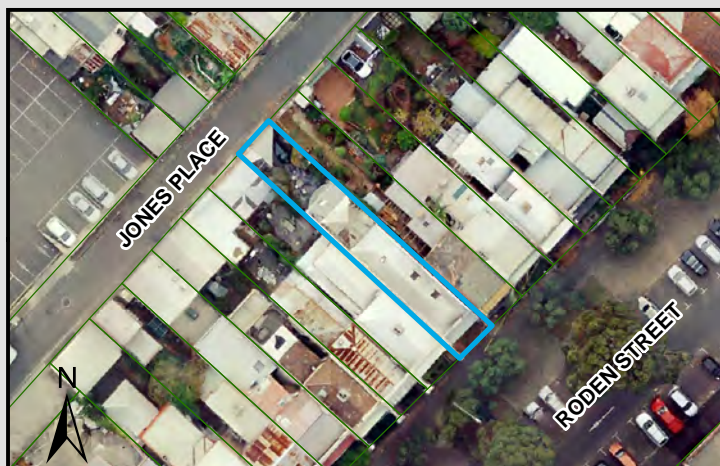
**SCALE (at A4) (BUILDING MAP) 1:1,000**  
DATUM GDA 94, PROJECTION MGA Zone 55

**PROJECT: 18113718**  
**DATE: 27 FEB 2019**  
**DRAWN: TPC**  
**CHECKED: IMK**



CoM Property ID: 108384

84 Roden Street WEST MELBOURNE VIC 3003



#### LEGEND

 Parcel Boundary

#### Action Plan

##### EAO Recommendation

**Do Not Apply EAO**

##### EAO Comment

Site has not identified as being potentially contaminated in accordance with the Potentially Contaminated Land General Practice Note (DSE, 2005)

#### Site Use Summary

**Current Land Use**  
Residential

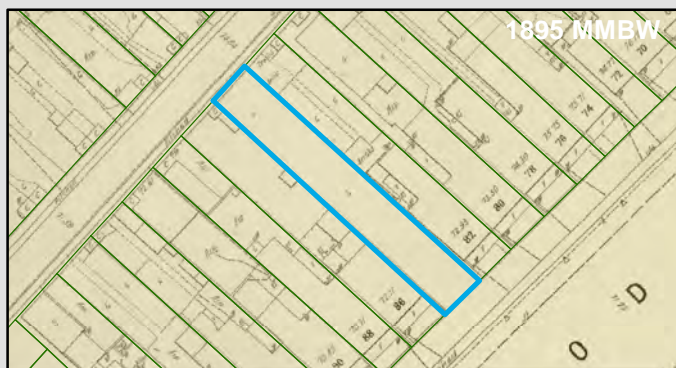
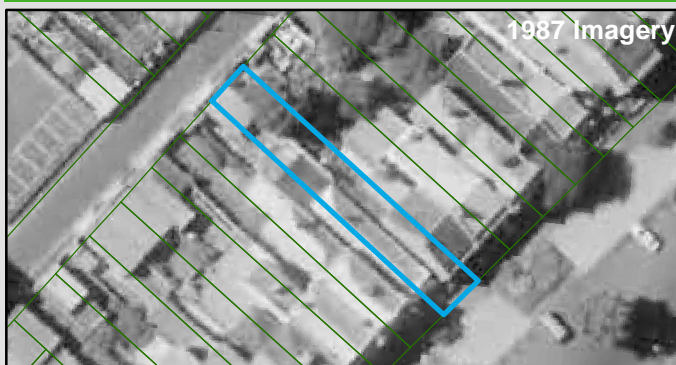
**Historic Land Use**  
Residential

##### Key Information Supporting EAO Decision

Research indicates this site has currently and previously been used for residential purposes.

##### Additional Considerations

#### Resources used to make decision



##### Resources used to make decision

Site inspection, Historical aerial photographs (1968/9 & 1987)

WEST MELBOURNE EAO - AMENDMENT C309 -  
WEST MELBOURNE STRUCTURE PLAN:  
PRELIMINARY LAND CONTAMINATION ASSESSMENT

CITY OF MELBOURNE

**GIS ID: 6701**

##### COPYRIGHT

Aerial Imagery copyright  
City of Melbourne

0 5 10 20 30 40 50 metres

**SCALE (at A4) (BUILDING MAP) 1:1,000**  
DATUM GDA 94, PROJECTION MGA Zone 55

**PROJECT: 18113718**  
**DATE: 27 FEB 2019**  
**DRAWN: TPC**  
**CHECKED: IMK**

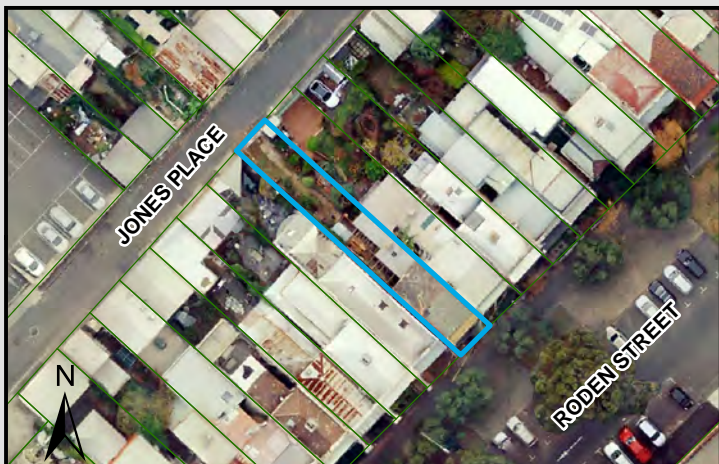




Information contained on this drawing is the copyright of Golder Associates Pty. Ltd. Unauthorised use or reproduction of this plan either wholly or in part without written permission infringes copyright. © Golder Associates Pty. Ltd.

CoM Property ID: 108385

82 Roden Street WEST MELBOURNE VIC 3003



#### LEGEND

 Parcel Boundary

### Action Plan

#### EAO Recommendation

**Do Not Apply EAO**

#### EAO Comment

Site has not identified as being potentially contaminated in accordance with the Potentially Contaminated Land General Practice Note (DSE, 2005)

### Site Use Summary

**Current Land Use**  
Residential

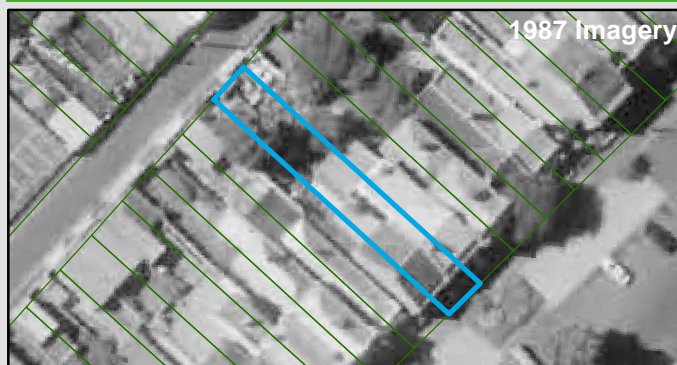
**Historic Land Use**  
Residential

#### Key Information Supporting EAO Decision

Research indicates this site has currently and previously been used for residential purposes.

#### Additional Considerations

### Resources used to make decision



#### Resources used to make decision

Site inspection, Historical aerial photographs (1968/9 & 1987)

WEST MELBOURNE EAO - AMENDMENT C309 -  
WEST MELBOURNE STRUCTURE PLAN:  
PRELIMINARY LAND CONTAMINATION ASSESSMENT

CITY OF MELBOURNE

**GIS ID: 6702**

#### COPYRIGHT

Aerial Imagery copyright  
City of Melbourne

0 5 10 20 30 40 50 metres

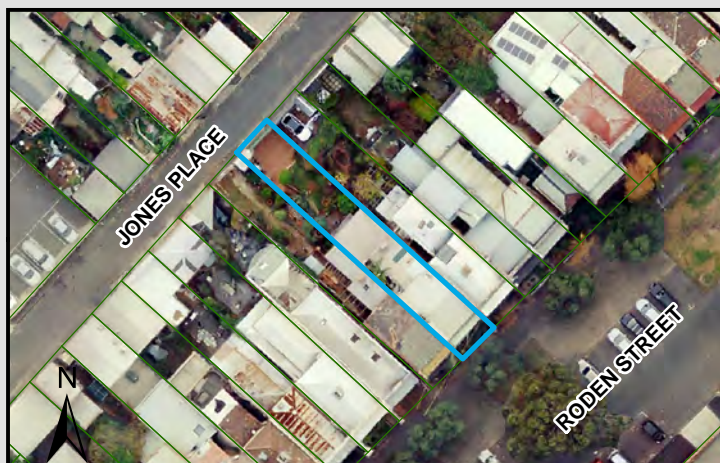
**SCALE (at A4) (BUILDING MAP) 1:1,000**  
DATUM GDA 94, PROJECTION MGA Zone 55

**PROJECT: 18113718**  
**DATE: 27 FEB 2019**  
**DRAWN: TPC**  
**CHECKED: IMK**



CoM Property ID: 108386

80 Roden Street WEST MELBOURNE VIC 3003



#### LEGEND

 Parcel Boundary

#### Action Plan

##### EAO Recommendation

**Do Not Apply EAO**

##### EAO Comment

Site has not identified as being potentially contaminated in accordance with the Potentially Contaminated Land General Practice Note (DSE, 2005)

#### Site Use Summary

**Current Land Use**  
Residential

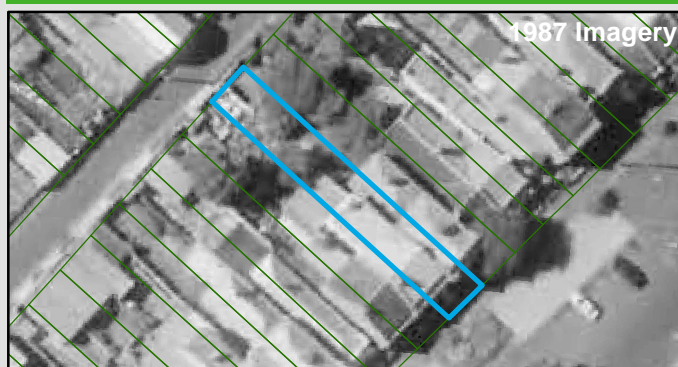
**Historic Land Use**  
Residential

#### Key Information Supporting EAO Decision

Research indicates this site has currently and previously been used for residential purposes.

#### Additional Considerations

#### Resources used to make decision



#### Resources used to make decision

Site inspection, Historical aerial photographs (1968/9 & 1987)

WEST MELBOURNE EAO - AMENDMENT C309 -  
WEST MELBOURNE STRUCTURE PLAN:  
PRELIMINARY LAND CONTAMINATION ASSESSMENT

CITY OF MELBOURNE

**GIS ID: 7612**

#### COPYRIGHT

Aerial Imagery copyright  
City of Melbourne

0 5 10 20 30 40 50 metres

**SCALE (at A4) (BUILDING MAP) 1:1,000**  
DATUM GDA 94, PROJECTION MGA Zone 55

**PROJECT: 18113718**  
**DATE: 27 FEB 2019**  
**DRAWN: TPC**  
**CHECKED: IMK**





CoM Property ID: 108387

78 Roden Street WEST MELBOURNE VIC 3003



#### LEGEND

 Parcel Boundary

#### Action Plan

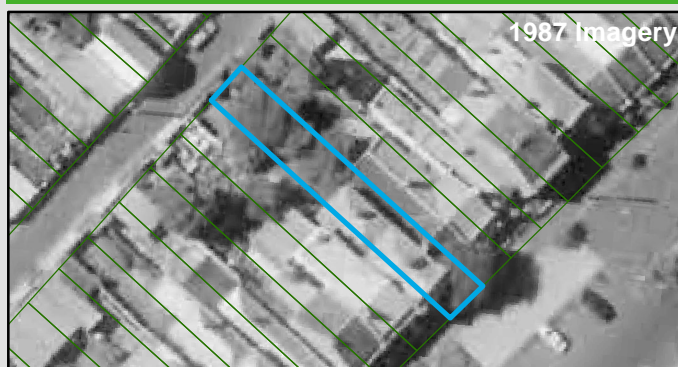
##### EAO Recommendation

**Do Not Apply EAO**

##### EAO Comment

Site has not identified as being potentially contaminated in accordance with the Potentially Contaminated Land General Practice Note (DSE, 2005)

#### Resources used to make decision



#### Site Use Summary

**Current Land Use**  
Residential

**Historic Land Use**  
Residential

#### Key Information Supporting EAO Decision

Research indicates this site has currently and previously been used for residential purposes.

#### Additional Considerations

#### Resources used to make decision

Site inspection, Historical aerial photographs (1968/9 & 1987)

WEST MELBOURNE EAO - AMENDMENT C309 -  
WEST MELBOURNE STRUCTURE PLAN:  
PRELIMINARY LAND CONTAMINATION ASSESSMENT

CITY OF MELBOURNE

**GIS ID: 7613**

#### COPYRIGHT

Aerial Imagery copyright  
City of Melbourne

0 5 10 20 30 40 50 metres

**SCALE (at A4) (BUILDING MAP) 1:1,000**  
DATUM GDA 94, PROJECTION MGA Zone 55

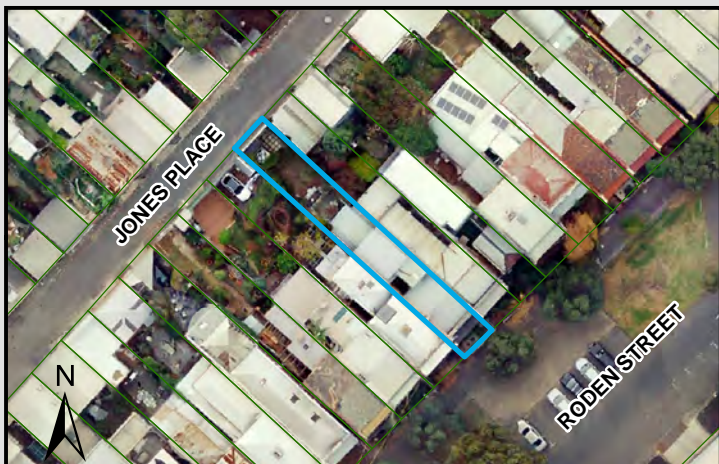
**PROJECT: 18113718**  
**DATE: 27 FEB 2019**  
**DRAWN: TPC**  
**CHECKED: IMK**



Information contained on this drawing is the copyright of Golder Associates Pty. Ltd. Unauthorised use or reproduction of this plan either wholly or in part without written permission infringes copyright. © Golder Associates Pty. Ltd.

CoM Property ID: 108388

76 Roden Street WEST MELBOURNE VIC 3003



#### LEGEND

 Parcel Boundary



#### Action Plan

##### EAO Recommendation

**Do Not Apply EAO**

##### EAO Comment

Site has not identified as being potentially contaminated in accordance with the Potentially Contaminated Land General Practice Note (DSE, 2005)

#### Site Use Summary

**Current Land Use**  
Residential

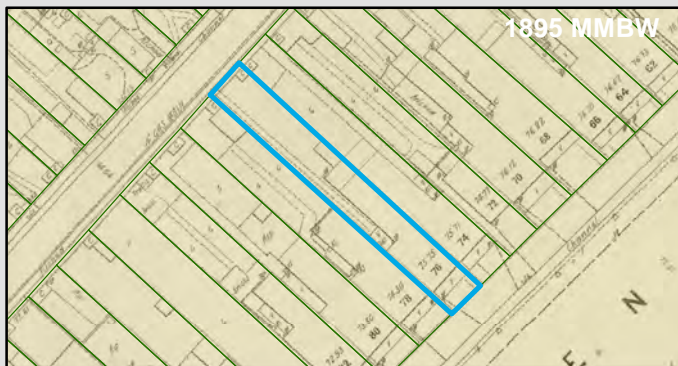
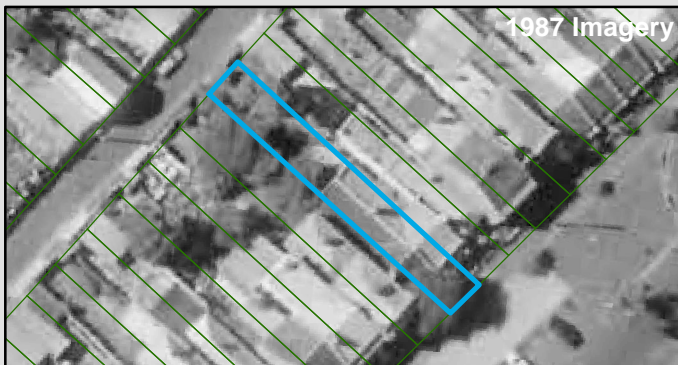
**Historic Land Use**  
Residential

#### Key Information Supporting EAO Decision

Research indicates this site has currently and previously been used for residential purposes.

#### Additional Considerations

#### Resources used to make decision



#### Resources used to make decision

Site inspection, Historical aerial photographs (1968/9 & 1987)

WEST MELBOURNE EAO - AMENDMENT C309 -  
WEST MELBOURNE STRUCTURE PLAN:  
PRELIMINARY LAND CONTAMINATION ASSESSMENT

CITY OF MELBOURNE

**GIS ID: 7614**

#### COPYRIGHT

Aerial Imagery copyright  
City of Melbourne

0 5 10 20 30 40 50 metres

**SCALE (at A4) (BUILDING MAP) 1:1,000**  
DATUM GDA 94, PROJECTION MGA Zone 55

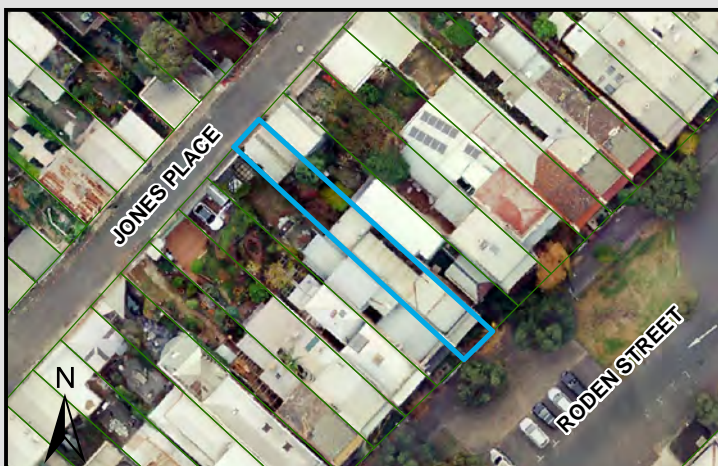
**PROJECT: 18113718**  
**DATE: 27 FEB 2019**  
**DRAWN: TPC**  
**CHECKED: IMK**





CoM Property ID: 108389

74 Roden Street WEST MELBOURNE VIC 3003



#### LEGEND

 Parcel Boundary



#### Action Plan

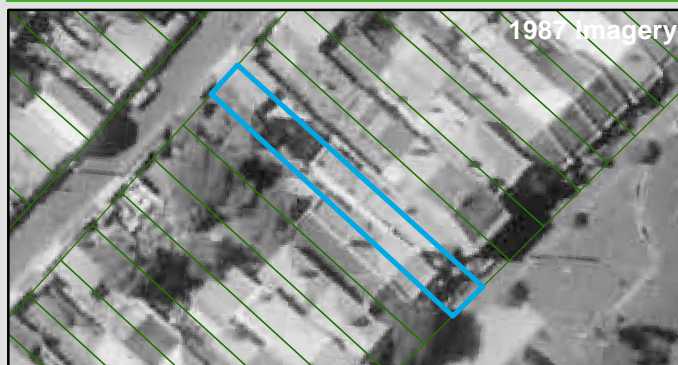
##### EAO Recommendation

**Do Not Apply EAO**

##### EAO Comment

Site has not identified as being potentially contaminated in accordance with the Potentially Contaminated Land General Practice Note (DSE, 2005)

#### Resources used to make decision



#### Site Use Summary

**Current Land Use**  
Residential

**Historic Land Use**  
Residential

#### Key Information Supporting EAO Decision

Research indicates this site has currently and previously been used for residential purposes.

#### Additional Considerations

#### Resources used to make decision

Site inspection, Historical aerial photographs (1968/9 & 1987)

WEST MELBOURNE EAO - AMENDMENT C309 -  
WEST MELBOURNE STRUCTURE PLAN:  
PRELIMINARY LAND CONTAMINATION ASSESSMENT

CITY OF MELBOURNE

**GIS ID: 7615**

#### COPYRIGHT

Aerial Imagery copyright  
City of Melbourne

0 5 10 20 30 40 50 metres

**SCALE (at A4) (BUILDING MAP) 1:1,000**  
DATUM GDA 94, PROJECTION MGA Zone 55

**PROJECT: 18113718**  
**DATE: 27 FEB 2019**  
**DRAWN: TPC**  
**CHECKED: IMK**

