


Information contained on this drawing is the copyright of Golder Associates Pty. Ltd. Unauthorised use or reproduction of this plan either wholly or in part without written permission infringes copyright. © Golder Associates Pty. Ltd.



LEGEND

 Parcel Boundary

Action Plan

EAO Recommendation

Do Not Apply EAO

EAO Comment

Site has not identified as being potentially contaminated in accordance with the Potentially Contaminated Land General Practice Note (DSE, 2005)

Site Use Summary

Current Land Use
Commercial

Historic Land Use
Residential

Key Information Supporting EAO Decision

No current or previous potentially contaminating land uses identified on site.

Additional Considerations

Resources used to make decision



Resources used to make decision

Site inspection, Historical aerial photographs (1968/9 & 1987)

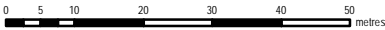
WEST MELBOURNE EAO - AMENDMENT C309 -
WEST MELBOURNE STRUCTURE PLAN:
PRELIMINARY LAND CONTAMINATION ASSESSMENT

CITY OF MELBOURNE

GIS ID: 7726

COPYRIGHT

Aerial Imagery copyright
City of Melbourne



SCALE (at A4) (BUILDING MAP) 1:1,100
DATUM GDA 94, PROJECTION MGA Zone 55


PROJECT: 18113718
DATE: 27 FEB 2019
DRAWN: TPC
CHECKED: IMK



Information contained on this drawing is the copyright of Golder Associates Pty. Ltd. Unauthorised use or reproduction of this plan either wholly or in part without written permission infringes copyright. © Golder Associates Pty. Ltd.



LEGEND

 Parcel Boundary

Action Plan

EAO Recommendation

Do Not Apply EAO

EAO Comment

Site has not identified as being potentially contaminated in accordance with the Potentially Contaminated Land General Practice Note (DSE, 2005)

Site Use Summary

Current Land Use
Residential

Historic Land Use
Residential

Key Information Supporting EAO Decision

Research indicates this site has currently and previously been used for residential purposes.

Additional Considerations

Resources used to make decision



Resources used to make decision

Site inspection, Historical aerial photographs (1968/9 & 1987)

WEST MELBOURNE EAO - AMENDMENT C309 -
WEST MELBOURNE STRUCTURE PLAN:
PRELIMINARY LAND CONTAMINATION ASSESSMENT

CITY OF MELBOURNE

GIS ID: 7692

COPYRIGHT

Aerial Imagery copyright
City of Melbourne

0 4 8 16 24 32 40 metres

SCALE (at A4) (BUILDING MAP) 1:800
DATUM GDA 94, PROJECTION MGA Zone 55

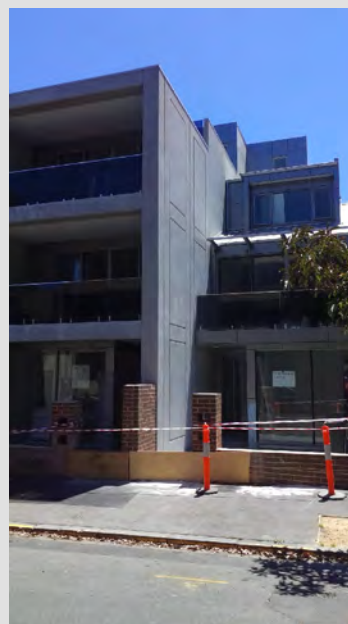
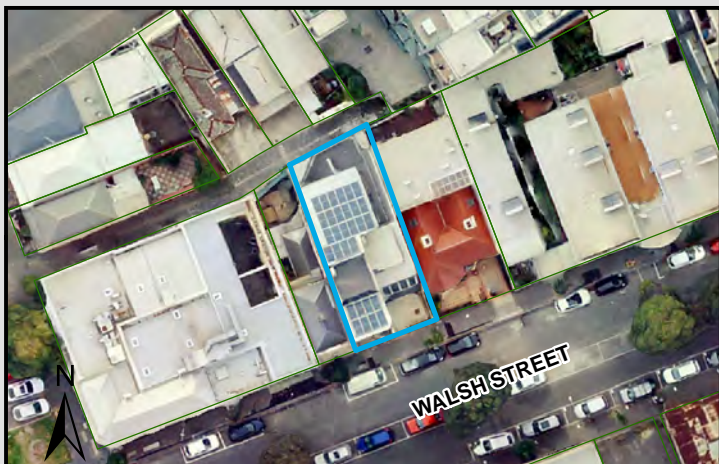
PROJECT: 18113718
DATE: 27 FEB 2019
DRAWN: TPC
CHECKED: IMK



Information contained on this drawing is the copyright of Golder Associates Pty. Ltd. Unauthorised use or reproduction of this plan either wholly or in part without written permission infringes copyright. © Golder Associates Pty. Ltd.

CoM Property ID: 109948

58-60 Walsh Street WEST MELBOURNE VIC 3003



LEGEND

 Parcel Boundary

Action Plan

EAO Recommendation

Do Not Apply EAO

EAO Comment

Site has not identified as being potentially contaminated in accordance with the Potentially Contaminated Land General Practice Note (DSE, 2005)

Site Use Summary

Current Land Use
Residential

Historic Land Use
Residential

Key Information Supporting EAO Decision

Research indicates this site has currently and previously been used for residential purposes.

Additional Considerations

Resources used to make decision



Resources used to make decision

West Melbourne Heritage Review Appendix 2 (May 2016), Site inspection, Historical aerial photographs (1968/9 & 1987)

WEST MELBOURNE EAO - AMENDMENT C309 -
WEST MELBOURNE STRUCTURE PLAN:
PRELIMINARY LAND CONTAMINATION ASSESSMENT

CITY OF MELBOURNE

GIS ID: 7693

COPYRIGHT

Aerial Imagery copyright
City of Melbourne

0 4.5 9 18 27 36 45 metres

SCALE (at A4) (BUILDING MAP) 1:900
DATUM GDA 94, PROJECTION MGA Zone 55

PROJECT: 18113718
DATE: 27 FEB 2019
DRAWN: TPC
CHECKED: IMK



Information contained on this drawing is the copyright of Golder Associates Pty. Ltd. Unauthorised use or reproduction of this plan either wholly or in part without written permission infringes copyright. © Golder Associates Pty. Ltd.



LEGEND

 Parcel Boundary



Action Plan

EAO Recommendation

Do Not Apply EAO

EAO Comment

Site has not identified as being potentially contaminated in accordance with the Potentially Contaminated Land General Practice Note (DSE, 2005)

Site Use Summary

Current Land Use
Residential

Historic Land Use
Residential

Key Information Supporting EAO Decision

Research indicates this site has currently and previously been used for residential purposes.

Additional Considerations

Resources used to make decision



Resources used to make decision

Site inspection, Historical aerial photographs (1968/9 & 1987)

WEST MELBOURNE EAO - AMENDMENT C309 -
WEST MELBOURNE STRUCTURE PLAN:
PRELIMINARY LAND CONTAMINATION ASSESSMENT

CITY OF MELBOURNE

GIS ID: 7694

COPYRIGHT
Aerial Imagery copyright
City of Melbourne

0 5 10 20 30 40 50 metres
SCALE (at A4) (BUILDING MAP) 1:1,200
DATUM GDA 94, PROJECTION MGA Zone 55
PROJECT: 18113718
DATE: 27 FEB 2019
DRAWN: TPC
CHECKED: IMK



Information contained on this drawing is the copyright of Golder Associates Pty. Ltd. Unauthorised use or reproduction of this plan either wholly or in part without written permission infringes copyright. © Golder Associates Pty. Ltd.

CoM Property ID: 110111

Royal Standard Hotel 333-337 William Street WEST MELBOURNE VIC 3003



LEGEND

 Parcel Boundary

Action Plan

EAO Recommendation

Do Not Apply EAO

EAO Comment

Site has not identified as being potentially contaminated in accordance with the Potentially Contaminated Land General Practice Note (DSE, 2005)

Site Use Summary

Current Land Use
Commercial

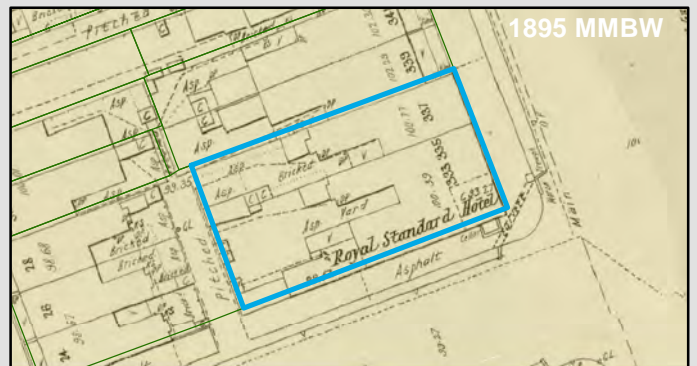
Historic Land Use
Commercial

Key Information Supporting EAO Decision

No current or previous potentially contaminating land uses identified on site.

Additional Considerations

Resources used to make decision



Resources used to make decision

West Melbourne Heritage Review Appendix 2 (May 2016), Site inspection, Historical aerial photographs (1968/9 & 1987)

WEST MELBOURNE EAO - AMENDMENT C309 -
WEST MELBOURNE STRUCTURE PLAN:
PRELIMINARY LAND CONTAMINATION ASSESSMENT

CITY OF MELBOURNE

GIS ID: 7695

COPYRIGHT

Aerial Imagery copyright
City of Melbourne

0 4 8 16 24 32 40 metres

SCALE (at A4) (BUILDING MAP) 1:800
DATUM GDA 94, PROJECTION MGA Zone 55

PROJECT: 18113718
DATE: 27 FEB 2019
DRAWN: TPC
CHECKED: IMK



Information contained on this drawing is the copyright of Golder Associates Pty. Ltd. Unauthorised use or reproduction of this plan either wholly or in part without written permission infringes copyright. © Golder Associates Pty. Ltd.

CoM Property ID: 110112

339-341 William Street WEST MELBOURNE VIC 3003



LEGEND

 Parcel Boundary



Action Plan

EAO Recommendation

Do Not Apply EAO

EAO Comment

Site has not identified as being potentially contaminated in accordance with the Potentially Contaminated Land General Practice Note (DSE, 2005)

Site Use Summary

Current Land Use
Commercial

Historic Land Use
Residential

Key Information Supporting EAO Decision

No current or previous potentially contaminating land uses identified on site.

Additional Considerations

Resources used to make decision



Resources used to make decision

West Melbourne Heritage Review Appendix 2 (May 2016), Site inspection, Historical aerial photographs (1968/9 & 1987)

WEST MELBOURNE EAO - AMENDMENT C309 -
WEST MELBOURNE STRUCTURE PLAN:
PRELIMINARY LAND CONTAMINATION ASSESSMENT

CITY OF MELBOURNE

GIS ID: 7696

COPYRIGHT

Aerial Imagery copyright
City of Melbourne

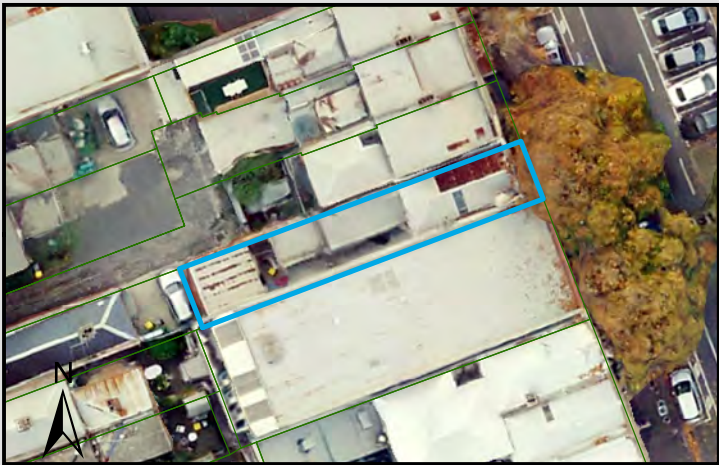
0 3.5 7 14 21 28 35 metres

SCALE (at A4) (BUILDING MAP) 1:700
DATUM GDA 94, PROJECTION MGA Zone 55


PROJECT: 18113718
DATE: 27 FEB 2019
DRAWN: TPC
CHECKED: IMK



Information contained on this drawing is the copyright of Golder Associates Pty. Ltd. Unauthorised use or reproduction of this plan either wholly or in part without written permission infringes copyright. © Golder Associates Pty. Ltd.



LEGEND

 Parcel Boundary

Action Plan

EAO Recommendation

Do Not Apply EAO

EAO Comment

Site has not identified as being potentially contaminated in accordance with the Potentially Contaminated Land General Practice Note (DSE, 2005)

Site Use Summary

Current Land Use
Residential

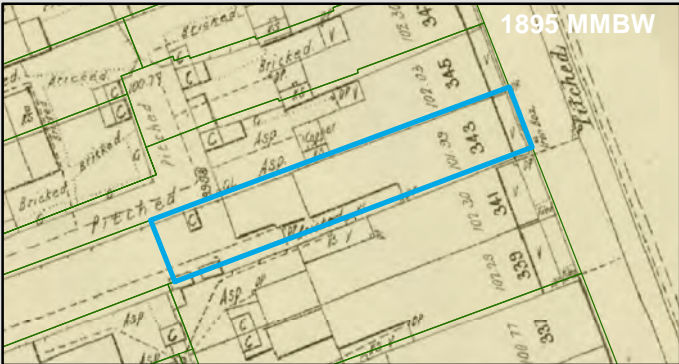
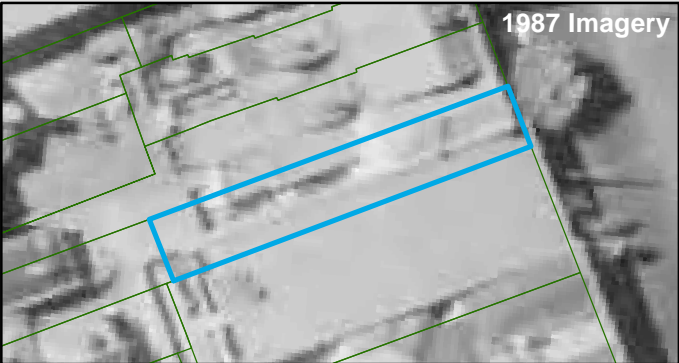
Historic Land Use
Residential

Key Information Supporting EAO Decision

Research indicates this site has currently and previously been used for residential purposes.

Additional Considerations

Resources used to make decision



Resources used to make decision

Site inspection, Historical aerial photographs (1968/9 & 1987)

WEST MELBOURNE EAO - AMENDMENT C309 -
WEST MELBOURNE STRUCTURE PLAN:
PRELIMINARY LAND CONTAMINATION ASSESSMENT

CITY OF MELBOURNE

GIS ID: 7697

COPYRIGHT
Aerial Imagery copyright
City of Melbourne


0 3 6 12 18 24 30 metres
SCALE (at A4) (BUILDING MAP) 1:600
DATUM GDA 94, PROJECTION MGA Zone 55
PROJECT: 18113718
DATE: 27 FEB 2019
DRAWN: TPC
CHECKED: IMK



Information contained on this drawing is the copyright of Golder Associates Pty. Ltd. Unauthorised use or reproduction of this plan either wholly or in part without written permission infringes copyright. © Golder Associates Pty. Ltd.



LEGEND

 Parcel Boundary

Action Plan

EAO Recommendation

Do Not Apply EAO

EAO Comment

Site has not identified as being potentially contaminated in accordance with the Potentially Contaminated Land General Practice Note (DSE, 2005)

Site Use Summary

Current Land Use
Residential

Historic Land Use
Residential

Key Information Supporting EAO Decision

Research indicates this site has currently and previously been used for residential purposes.

Additional Considerations

Resources used to make decision



Resources used to make decision

West Melbourne Heritage Review Appendix 2 (May 2016), Site inspection, Historical aerial photographs (1968/9 & 1987)

WEST MELBOURNE EAO - AMENDMENT C309 -
WEST MELBOURNE STRUCTURE PLAN:
PRELIMINARY LAND CONTAMINATION ASSESSMENT

CITY OF MELBOURNE

GIS ID: 7422

COPYRIGHT
Aerial Imagery copyright
City of Melbourne


0 4 8 16 24 32 40 metres
SCALE (at A4) (BUILDING MAP) 1:800
DATUM GDA 94, PROJECTION MGA Zone 55
PROJECT: 18113718
DATE: 27 FEB 2019
DRAWN: TPC
CHECKED: IMK



Information contained on this drawing is the copyright of Golder Associates Pty. Ltd. Unauthorised use or reproduction of this plan either wholly or in part without written permission infringes copyright. © Golder Associates Pty. Ltd.



LEGEND

 Parcel Boundary

Action Plan

EAO Recommendation

Do Not Apply EAO

EAO Comment

Site has not identified as being potentially contaminated in accordance with the Potentially Contaminated Land General Practice Note (DSE, 2005)

Site Use Summary

Current Land Use
Residential

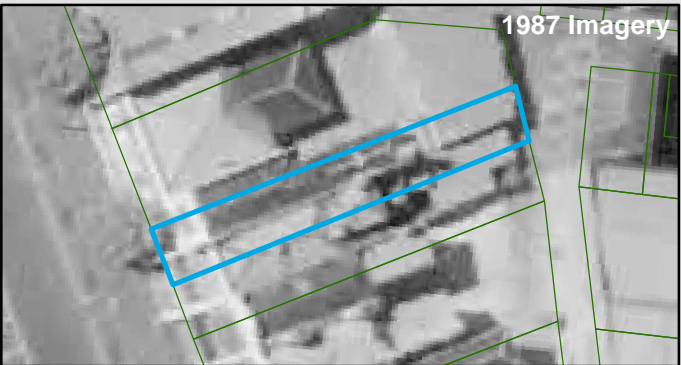
Historic Land Use
Residential

Key Information Supporting EAO Decision

Research indicates this site has currently and previously been used for residential purposes.

Additional Considerations

Resources used to make decision



Resources used to make decision

West Melbourne Heritage Review Appendix 2 (May 2016), Site inspection, Historical aerial photographs (1968/9 & 1987)

WEST MELBOURNE EAO - AMENDMENT C309 -
WEST MELBOURNE STRUCTURE PLAN:
PRELIMINARY LAND CONTAMINATION ASSESSMENT

CITY OF MELBOURNE

GIS ID: 7423

COPYRIGHT
Aerial Imagery copyright
City of Melbourne

0 3.5 7 14 21 28 35 metres
SCALE (at A4) (BUILDING MAP) 1:700
DATUM GDA 94, PROJECTION MGA Zone 55
PROJECT: 18113718
DATE: 27 FEB 2019
DRAWN: TPC
CHECKED: IMK



Information contained on this drawing is the copyright of Golder Associates Pty. Ltd. Unauthorised use or reproduction of this plan either wholly or in part without written permission infringes copyright. © Golder Associates Pty. Ltd.



LEGEND

 Parcel Boundary

Action Plan

EAO Recommendation

Do Not Apply EAO

EAO Comment

Site has not identified as being potentially contaminated in accordance with the Potentially Contaminated Land General Practice Note (DSE, 2005)

Site Use Summary

Current Land Use
Commercial

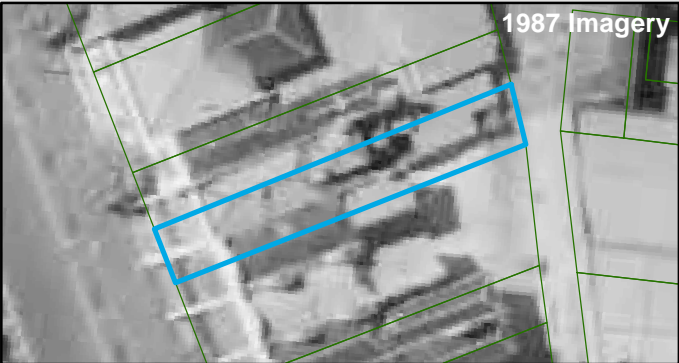
Historic Land Use
Residential

Key Information Supporting EAO Decision

No current or previous potentially contaminating land uses identified on site.

Additional Considerations

Resources used to make decision



Resources used to make decision

West Melbourne Heritage Review Appendix 2 (May 2016), Site inspection, Historical aerial photographs (1968/9 & 1987)

WEST MELBOURNE EAO - AMENDMENT C309 -
WEST MELBOURNE STRUCTURE PLAN:
PRELIMINARY LAND CONTAMINATION ASSESSMENT

CITY OF MELBOURNE

GIS ID: 7424

COPYRIGHT
Aerial Imagery copyright
City of Melbourne

0 3.5 7 14 21 28 35 metres
SCALE (at A4) (BUILDING MAP) 1:700
DATUM GDA 94, PROJECTION MGA Zone 55
PROJECT: 18113718
DATE: 27 FEB 2019
DRAWN: TPC
CHECKED: IMK




Information contained on this drawing is the copyright of Golder Associates Pty. Ltd. Unauthorised use or reproduction of this plan either wholly or in part without written permission infringes copyright. © Golder Associates Pty. Ltd.

CoM Property ID: 110122

474-476 William Street WEST MELBOURNE VIC 3003



LEGEND

 Parcel Boundary



Action Plan

EAO Recommendation

Do Not Apply EAO

EAO Comment

Site has not identified as being potentially contaminated in accordance with the Potentially Contaminated Land General Practice Note (DSE, 2005)

Site Use Summary

Current Land Use
Residential

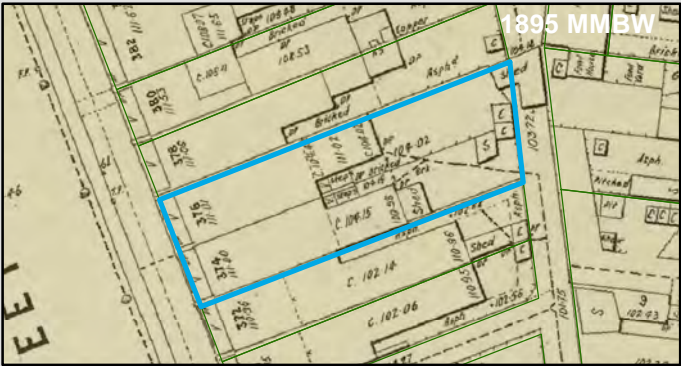
Historic Land Use
Residential

Key Information Supporting EAO Decision

Research indicates this site has currently and previously been used for residential purposes.

Additional Considerations

Resources used to make decision



Resources used to make decision

Site inspection, Historical aerial photographs (1968/9 & 1987)

WEST MELBOURNE EAO - AMENDMENT C309 -
WEST MELBOURNE STRUCTURE PLAN:
PRELIMINARY LAND CONTAMINATION ASSESSMENT

CITY OF MELBOURNE

GIS ID: 7425

COPYRIGHT

Aerial Imagery copyright
City of Melbourne

0 3.5 7 14 21 28 35 metres

SCALE (at A4) (BUILDING MAP) 1:700
DATUM GDA 94, PROJECTION MGA Zone 55

PROJECT: 18113718
DATE: 27 FEB 2019
DRAWN: TPC
CHECKED: IMK



Information contained on this drawing is the copyright of Golder Associates Pty. Ltd. Unauthorised use or reproduction of this plan either wholly or in part without written permission infringes copyright. © Golder Associates Pty. Ltd.



LEGEND

Parcel Boundary

Action Plan

EAO Recommendation

Do Not Apply EAO

EAO Comment

Site has not identified as being potentially contaminated in accordance with the Potentially Contaminated Land General Practice Note (DSE, 2005)

Site Use Summary

Current Land Use
Residential

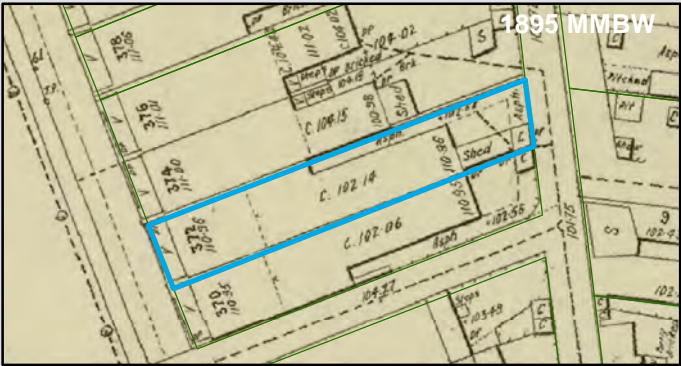
Historic Land Use
Residential

Key Information Supporting EAO Decision

Research indicates this site has currently and previously been used for residential purposes.

Additional Considerations

Resources used to make decision



Resources used to make decision

Site inspection, Historical aerial photographs (1968/9 & 1987)

WEST MELBOURNE EAO - AMENDMENT C309 -
WEST MELBOURNE STRUCTURE PLAN:
PRELIMINARY LAND CONTAMINATION ASSESSMENT

CITY OF MELBOURNE

GIS ID: 7426

COPYRIGHT
Aerial Imagery copyright
City of Melbourne

0 3 6 12 18 24 30 metres
SCALE (at A4) (BUILDING MAP) 1:600
DATUM GDA 94, PROJECTION MGA Zone 55
PROJECT: 18113718
DATE: 27 FEB 2019
DRAWN: TPC
CHECKED: IMK



Information contained on this drawing is the copyright of Golder Associates Pty. Ltd. Unauthorised use or reproduction of this plan either wholly or in part without written permission infringes copyright. © Golder Associates Pty. Ltd.



LEGEND

Parcel Boundary

Action Plan

EAO Recommendation

Do Not Apply EAO

EAO Comment

Site has not identified as being potentially contaminated in accordance with the Potentially Contaminated Land General Practice Note (DSE, 2005)

Site Use Summary

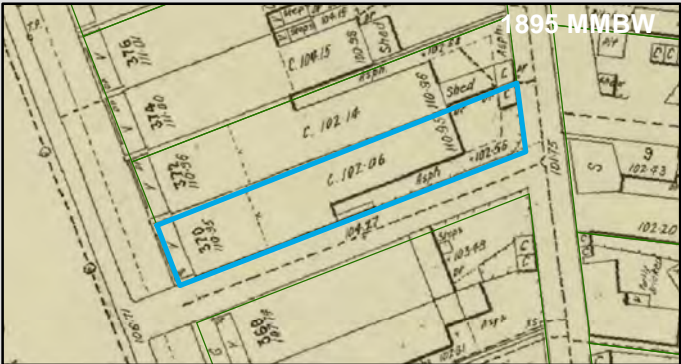
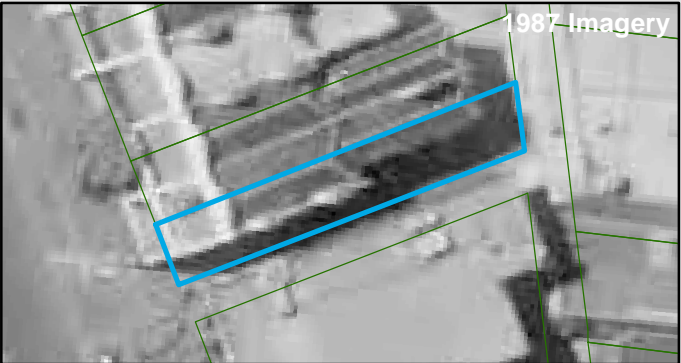
Current Land Use	Historic Land Use
Residential	Residential

Key Information Supporting EAO Decision

Research indicates this site has currently and previously been used for residential purposes.

Additional Considerations

Resources used to make decision



Resources used to make decision

Site inspection, Historical aerial photographs (1968/9 & 1987)

WEST MELBOURNE EAO - AMENDMENT C309 -
WEST MELBOURNE STRUCTURE PLAN:
PRELIMINARY LAND CONTAMINATION ASSESSMENT

CITY OF MELBOURNE

GIS ID: 7427

COPYRIGHT

Aerial Imagery copyright
City of Melbourne

0 3 6 12 18 24 30 metres

SCALE (at A4) (BUILDING MAP) 1:600
DATUM GDA 94, PROJECTION MGA Zone 55


PROJECT: 18113718
DATE: 27 FEB 2019
DRAWN: TPC
CHECKED: IMK



Information contained on this drawing is the copyright of Golder Associates Pty. Ltd. Unauthorised use or reproduction of this plan either wholly or in part without written permission infringes copyright. © Golder Associates Pty. Ltd.



LEGEND

 Parcel Boundary

Action Plan

EAO Recommendation

Do Not Apply EAO

EAO Comment

Site has not identified as being potentially contaminated in accordance with the Potentially Contaminated Land General Practice Note (DSE, 2005)

Site Use Summary

Current Land Use
Commercial

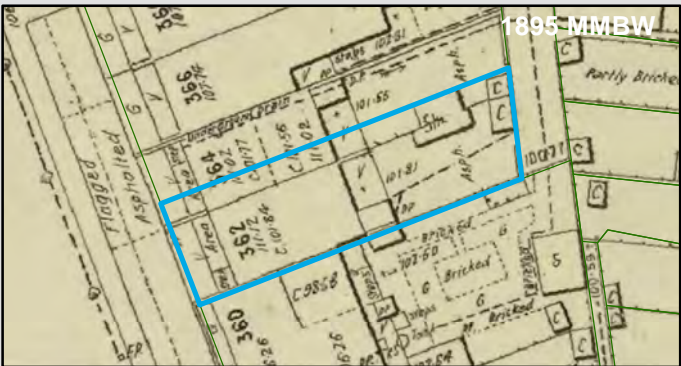
Historic Land Use
Commercial

Key Information Supporting EAO Decision

No current or previous potentially contaminating land uses identified on site.

Additional Considerations

Resources used to make decision



Resources used to make decision

Site inspection, Historical aerial photographs (1968/9 & 1987)

WEST MELBOURNE EAO - AMENDMENT C309 -
WEST MELBOURNE STRUCTURE PLAN:
PRELIMINARY LAND CONTAMINATION ASSESSMENT

CITY OF MELBOURNE

GIS ID: 7429

COPYRIGHT
Aerial Imagery copyright
City of Melbourne


0 2.5 5 10 15 20 25 metres
SCALE (at A4) (BUILDING MAP) 1:500
DATUM GDA 94, PROJECTION MGA Zone 55
PROJECT: 18113718
DATE: 27 FEB 2019
DRAWN: TPC
CHECKED: IMK



Information contained on this drawing is the copyright of Golder Associates Pty. Ltd. Unauthorised use or reproduction of this plan either wholly or in part without written permission infringes copyright. © Golder Associates Pty. Ltd.



LEGEND

 Parcel Boundary



Action Plan

EAO Recommendation

Do Not Apply EAO

EAO Comment

Site has not identified as being potentially contaminated in accordance with the Potentially Contaminated Land General Practice Note (DSE, 2005)

Site Use Summary

Current Land Use
Residential

Historic Land Use
Residential

Key Information Supporting EAO Decision

Research indicates this site has currently and previously been used for residential purposes.

Additional Considerations

Resources used to make decision



Resources used to make decision

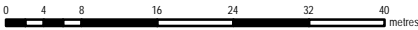
West Melbourne Heritage Review Appendix 2 (May 2016), Site inspection, Historical aerial photographs (1968/9 & 1987)

WEST MELBOURNE EAO - AMENDMENT C309 -
WEST MELBOURNE STRUCTURE PLAN:
PRELIMINARY LAND CONTAMINATION ASSESSMENT

CITY OF MELBOURNE

GIS ID: 7430

COPYRIGHT
Aerial Imagery copyright
City of Melbourne



SCALE (at A4) (BUILDING MAP) 1:800
DATUM GDA 94, PROJECTION MGA Zone 55


PROJECT: 18113718
DATE: 27 FEB 2019
DRAWN: TPC
CHECKED: IMK



Information contained on this drawing is the copyright of Golder Associates Pty. Ltd. Unauthorised use or reproduction of this plan either wholly or in part without written permission infringes copyright. © Golder Associates Pty. Ltd.



LEGEND

 Parcel Boundary

Action Plan

EAO Recommendation

Do Not Apply EAO

EAO Comment

Site has not identified as being potentially contaminated in accordance with the Potentially Contaminated Land General Practice Note (DSE, 2005)

Site Use Summary

Current Land Use
Residential

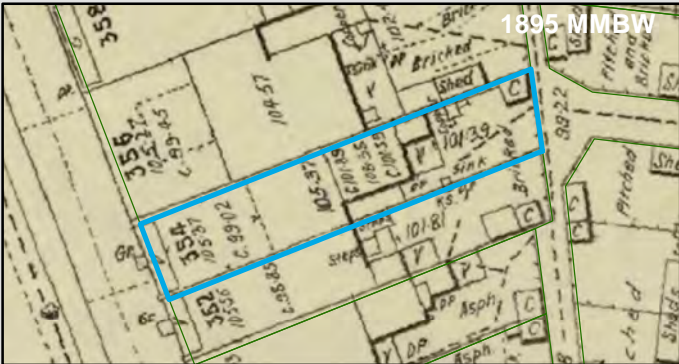
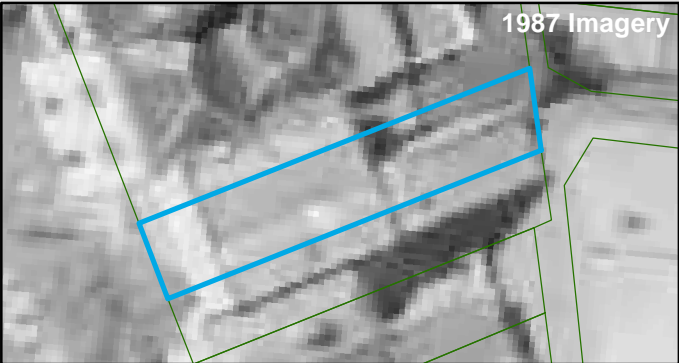
Historic Land Use
Residential

Key Information Supporting EAO Decision

Research indicates this site has currently and previously been used for residential purposes.

Additional Considerations

Resources used to make decision



Resources used to make decision

Site inspection, Historical aerial photographs (1968/9 & 1987)

WEST MELBOURNE EAO - AMENDMENT C309 -
WEST MELBOURNE STRUCTURE PLAN:
PRELIMINARY LAND CONTAMINATION ASSESSMENT

CITY OF MELBOURNE

GIS ID: 7431

COPYRIGHT
Aerial Imagery copyright
City of Melbourne

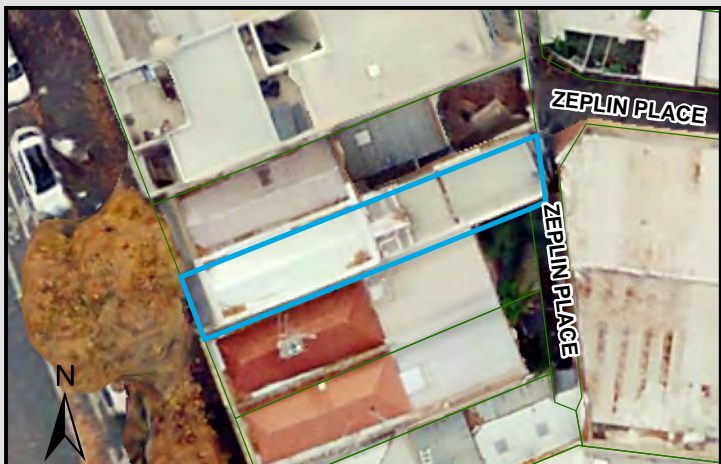
0 2 4 8 12 16 20 metres
SCALE (at A4) (BUILDING MAP) 1:400
DATUM GDA 94, PROJECTION MGA Zone 55
PROJECT: 18113718
DATE: 27 FEB 2019
DRAWN: TPC
CHECKED: IMK



Information contained on this drawing is the copyright of Golder Associates Pty. Ltd. Unauthorised use or reproduction of this plan either wholly or in part without written permission infringes copyright. © Golder Associates Pty. Ltd.

CoM Property ID: 110129

452 William Street WEST MELBOURNE VIC 3003



LEGEND

 Parcel Boundary



Action Plan

EAO Recommendation

Do Not Apply EAO

EAO Comment

Site has not identified as being potentially contaminated in accordance with the Potentially Contaminated Land General Practice Note (DSE, 2005)

Site Use Summary

Current Land Use
Commercial

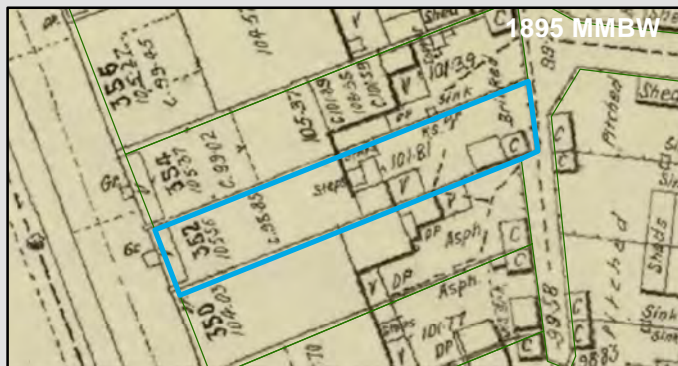
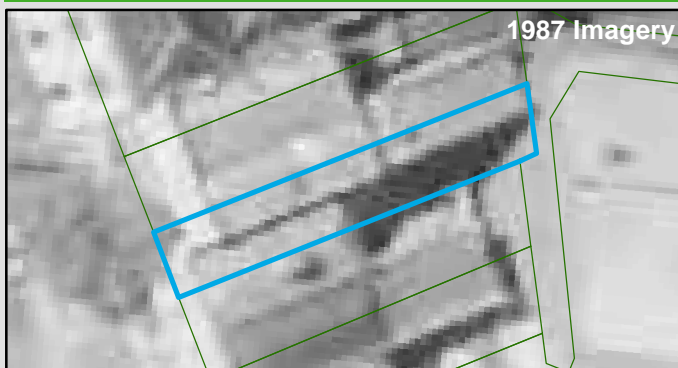
Historic Land Use
Residential

Key Information Supporting EAO Decision

No current or previous potentially contaminating land uses identified on site.

Additional Considerations

Resources used to make decision



Resources used to make decision

West Melbourne Heritage Review Appendix 2 (May 2016), Site inspection, Historical aerial photographs (1968/9 & 1987)

WEST MELBOURNE EAO - AMENDMENT C309 -
WEST MELBOURNE STRUCTURE PLAN:
PRELIMINARY LAND CONTAMINATION ASSESSMENT

CITY OF MELBOURNE

GIS ID: 7432

COPYRIGHT

Aerial Imagery copyright
City of Melbourne

0 2 4 8 12 16 20 metres

SCALE (at A4) (BUILDING MAP) 1:400
DATUM GDA 94, PROJECTION MGA Zone 55


PROJECT: 18113718
DATE: 27 FEB 2019
DRAWN: TPC
CHECKED: IMK



Information contained on this drawing is the copyright of Golder Associates Pty. Ltd. Unauthorised use or reproduction of this plan either wholly or in part without written permission infringes copyright. © Golder Associates Pty. Ltd.



LEGEND

 Parcel Boundary

Action Plan

EAO Recommendation

Do Not Apply EAO

EAO Comment

Site has not identified as being potentially contaminated in accordance with the Potentially Contaminated Land General Practice Note (DSE, 2005)

Site Use Summary

Current Land Use
Commercial

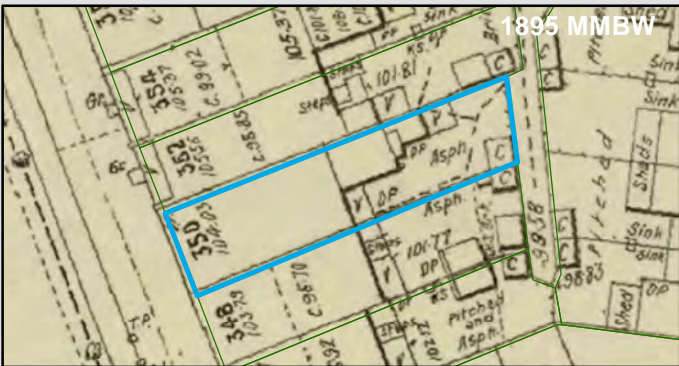
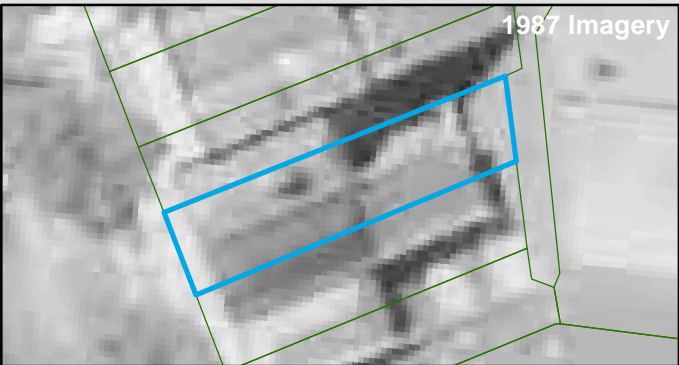
Historic Land Use
Residential

Key Information Supporting EAO Decision

No current or previous potentially contaminating land uses identified on site.

Additional Considerations

Resources used to make decision



Resources used to make decision

West Melbourne Heritage Review Appendix 2 (May 2016), Site inspection, Historical aerial photographs (1968/9 & 1987)

WEST MELBOURNE EAO - AMENDMENT C309 -
WEST MELBOURNE STRUCTURE PLAN:
PRELIMINARY LAND CONTAMINATION ASSESSMENT

CITY OF MELBOURNE

GIS ID: 7433

COPYRIGHT

Aerial Imagery copyright
City of Melbourne

0 2 4 8 12 16 20 metres

SCALE (at A4) (BUILDING MAP) 1:400
DATUM GDA 94, PROJECTION MGA Zone 55


PROJECT: 18113718
DATE: 27 FEB 2019
DRAWN: TPC
CHECKED: IMK



Information contained on this drawing is the copyright of Golder Associates Pty. Ltd. Unauthorised use or reproduction of this plan either wholly or in part without written permission infringes copyright. © Golder Associates Pty. Ltd.



LEGEND

 Parcel Boundary

Action Plan

EAO Recommendation

Do Not Apply EAO

EAO Comment

Site has not identified as being potentially contaminated in accordance with the Potentially Contaminated Land General Practice Note (DSE, 2005)

Site Use Summary

Current Land Use
Commercial

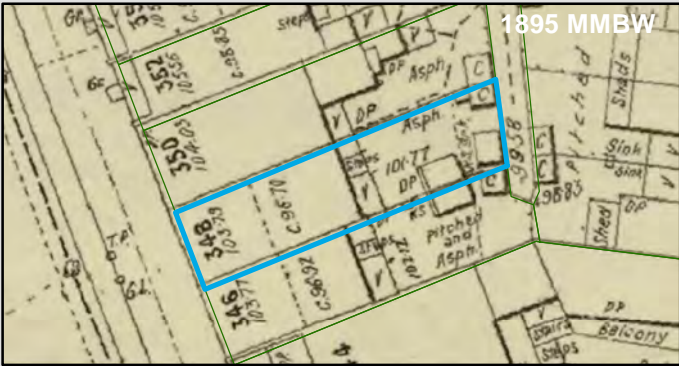
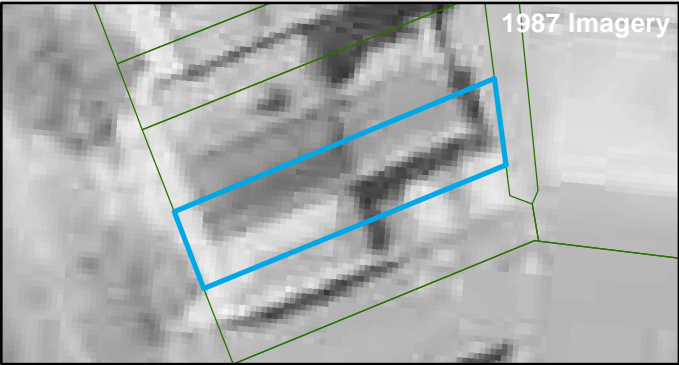
Historic Land Use
Residential

Key Information Supporting EAO Decision

No current or previous potentially contaminating land uses identified on site.

Additional Considerations

Resources used to make decision



Resources used to make decision

West Melbourne Heritage Review Appendix 2 (May 2016), Site inspection, Historical aerial photographs (1968/9 & 1987)

WEST MELBOURNE EAO - AMENDMENT C309 -
WEST MELBOURNE STRUCTURE PLAN:
PRELIMINARY LAND CONTAMINATION ASSESSMENT

CITY OF MELBOURNE

GIS ID: 7434

COPYRIGHT
Aerial Imagery copyright
City of Melbourne

0 2 4 8 12 16 20 metres
SCALE (at A4) (BUILDING MAP) 1:400
DATUM GDA 94, PROJECTION MGA Zone 55
PROJECT: 18113718
DATE: 27 FEB 2019
DRAWN: TPC
CHECKED: IMK



Information contained on this drawing is the copyright of Golder Associates Pty. Ltd. Unauthorised use or reproduction of this plan either wholly or in part without written permission infringes copyright. © Golder Associates Pty. Ltd.



LEGEND

Parcel Boundary

Action Plan

EAO Recommendation

Do Not Apply EAO

EAO Comment

Site has not identified as being potentially contaminated in accordance with the Potentially Contaminated Land General Practice Note (DSE, 2005)

Site Use Summary

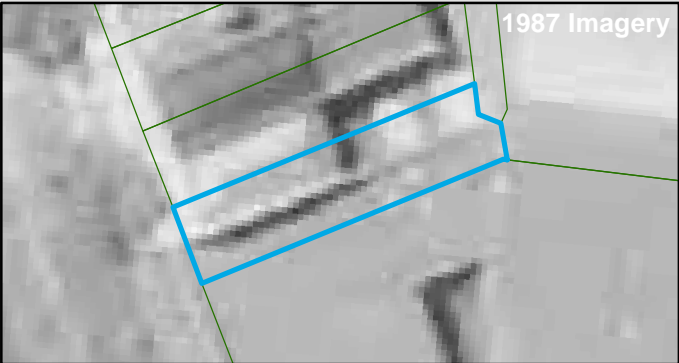
Current Land Use	Historic Land Use
Commercial	Residential

Key Information Supporting EAO Decision

No current or previous potentially contaminating land uses identified on site.

Additional Considerations

Resources used to make decision



Resources used to make decision

West Melbourne Heritage Review Appendix 2 (May 2016), Site inspection, Historical aerial photographs (1968/9 & 1987)

WEST MELBOURNE EAO - AMENDMENT C309 -
WEST MELBOURNE STRUCTURE PLAN:
PRELIMINARY LAND CONTAMINATION ASSESSMENT

CITY OF MELBOURNE

GIS ID: 7435

COPYRIGHT

Aerial Imagery copyright
City of Melbourne

0 2 4 8 12 16 20 metres

SCALE (at A4) (BUILDING MAP) 1:400
DATUM GDA 94, PROJECTION MGA Zone 55


PROJECT: 18113718
DATE: 27 FEB 2019
DRAWN: TPC
CHECKED: IMK



Information contained on this drawing is the copyright of Golder Associates Pty. Ltd. Unauthorised use or reproduction of this plan either wholly or in part without written permission infringes copyright. © Golder Associates Pty. Ltd.



LEGEND

 Parcel Boundary

Action Plan

EAO Recommendation

Do Not Apply EAO

EAO Comment

Site has not identified as being potentially contaminated in accordance with the Potentially Contaminated Land General Practice Note (DSE, 2005)

Site Use Summary

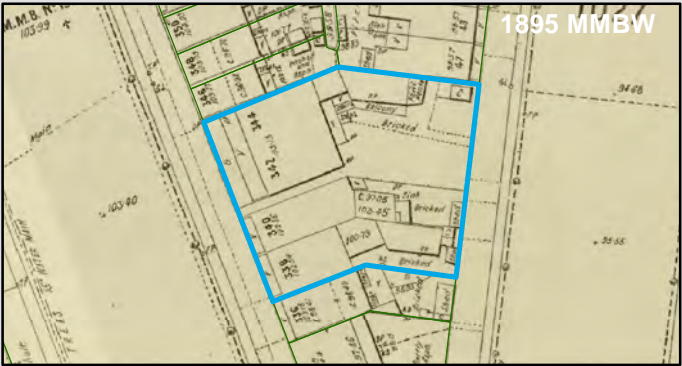
Current Land Use	Historic Land Use
Commercial	Other (unsure)

Key Information Supporting EAO Decision

No current or previous potentially contaminating land uses identified on site.

Additional Considerations

Resources used to make decision



Resources used to make decision

Site inspection, Historical aerial photographs (1968/9 & 1987)

WEST MELBOURNE EAO - AMENDMENT C309 -
WEST MELBOURNE STRUCTURE PLAN:
PRELIMINARY LAND CONTAMINATION ASSESSMENT

CITY OF MELBOURNE

GIS ID: 7436

COPYRIGHT

Aerial Imagery copyright
City of Melbourne

0 4.5 9 18 27 36 45 metres

SCALE (at A4) (BUILDING MAP) 1:900
DATUM GDA 94, PROJECTION MGA Zone 55

PROJECT: 18113718
DATE: 27 FEB 2019
DRAWN: TPC
CHECKED: IMK



Information contained on this drawing is the copyright of Golder Associates Pty. Ltd. Unauthorised use or reproduction of this plan either wholly or in part without written permission infringes copyright. © Golder Associates Pty. Ltd.

CoM Property ID: 110134

436 William Street WEST MELBOURNE VIC 3003



LEGEND

 Parcel Boundary



Action Plan

EAO Recommendation

Do Not Apply EAO

EAO Comment

Site has not identified as being potentially contaminated in accordance with the Potentially Contaminated Land General Practice Note (DSE, 2005)

Resources used to make decision



Site Use Summary

Current Land Use
Residential

Historic Land Use
Residential



Key Information Supporting EAO Decision

Research indicates this site has currently and previously been used for residential purposes.

Additional Considerations

Resources used to make decision

West Melbourne Heritage Review Appendix 2 (May 2016), Site inspection, Historical aerial photographs (1968/9 & 1987)

WEST MELBOURNE EAO - AMENDMENT C309 -
WEST MELBOURNE STRUCTURE PLAN:
PRELIMINARY LAND CONTAMINATION ASSESSMENT

CITY OF MELBOURNE

GIS ID: 7437

COPYRIGHT

Aerial Imagery copyright
City of Melbourne

0 2 4 8 12 16 20 metres

SCALE (at A4) (BUILDING MAP) 1:400
DATUM GDA 94, PROJECTION MGA Zone 55

PROJECT: 18113718
DATE: 27 FEB 2019
DRAWN: TPC
CHECKED: IMK



Information contained on this drawing is the copyright of Golder Associates Pty. Ltd. Unauthorised use or reproduction of this plan either wholly or in part without written permission infringes copyright. © Golder Associates Pty. Ltd.

CoM Property ID: 110135

432-434 William Street WEST MELBOURNE VIC 3003



LEGEND

 Parcel Boundary



Action Plan

EAO Recommendation

Do Not Apply EAO

EAO Comment

Site has not identified as being potentially contaminated in accordance with the Potentially Contaminated Land General Practice Note (DSE, 2005)

Resources used to make decision



Site Use Summary

Current Land Use
Residential

Historic Land Use
Residential



Key Information Supporting EAO Decision

Research indicates this site has currently and previously been used for residential purposes.

Additional Considerations

Resources used to make decision

West Melbourne Heritage Review Appendix 2 (May 2016), Site inspection, Historical aerial photographs (1968/9 & 1987)

WEST MELBOURNE EAO - AMENDMENT C309 -
WEST MELBOURNE STRUCTURE PLAN:
PRELIMINARY LAND CONTAMINATION ASSESSMENT

CITY OF MELBOURNE

GIS ID: 7438

COPYRIGHT

Aerial Imagery copyright
City of Melbourne

0 2 4 8 12 16 20 metres

SCALE (at A4) (BUILDING MAP) 1:400
DATUM GDA 94, PROJECTION MGA Zone 55


PROJECT: 18113718
DATE: 27 FEB 2019
DRAWN: TPC
CHECKED: IMK



Information contained on this drawing is the copyright of Golder Associates Pty. Ltd. Unauthorised use or reproduction of this plan either wholly or in part without written permission infringes copyright. © Golder Associates Pty. Ltd.



LEGEND

 Parcel Boundary



Action Plan

EAO Recommendation

Do Not Apply EAO

EAO Comment

Site has not identified as being potentially contaminated in accordance with the Potentially Contaminated Land General Practice Note (DSE, 2005)

Site Use Summary

Current Land Use
Residential

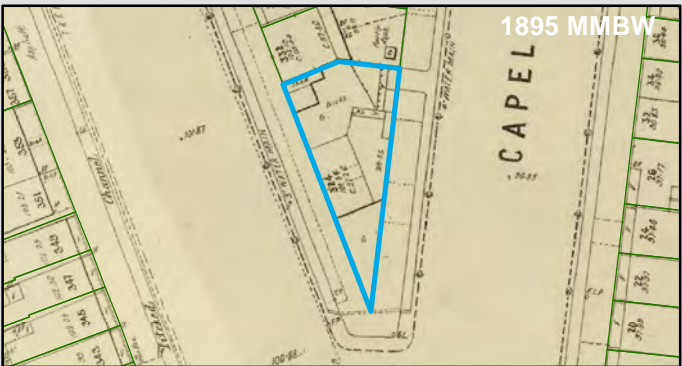
Historic Land Use
Residential

Key Information Supporting EAO Decision

Research indicates this site has currently and previously been used for residential purposes.

Additional Considerations

Resources used to make decision



Resources used to make decision

West Melbourne Heritage Review Appendix 2 (May 2016), Site inspection, Historical aerial photographs (1968/9 & 1987)

WEST MELBOURNE EAO - AMENDMENT C309 -
WEST MELBOURNE STRUCTURE PLAN:
PRELIMINARY LAND CONTAMINATION ASSESSMENT

CITY OF MELBOURNE

GIS ID: 7439

COPYRIGHT
Aerial Imagery copyright
City of Melbourne


0 5 10 20 30 40 50 metres
SCALE (at A4) (BUILDING MAP) 1:1,000
DATUM GDA 94, PROJECTION MGA Zone 55
PROJECT: 18113718
DATE: 27 FEB 2019
DRAWN: TPC
CHECKED: IMK



Information contained on this drawing is the copyright of Golder Associates Pty. Ltd. Unauthorised use or reproduction of this plan either wholly or in part without written permission infringes copyright. © Golder Associates Pty. Ltd.



LEGEND

 Parcel Boundary

Action Plan

EAO Recommendation

Do Not Apply EAO

EAO Comment

Site has not identified as being potentially contaminated in accordance with the Potentially Contaminated Land General Practice Note (DSE, 2005)

Site Use Summary

Current Land Use
Commercial

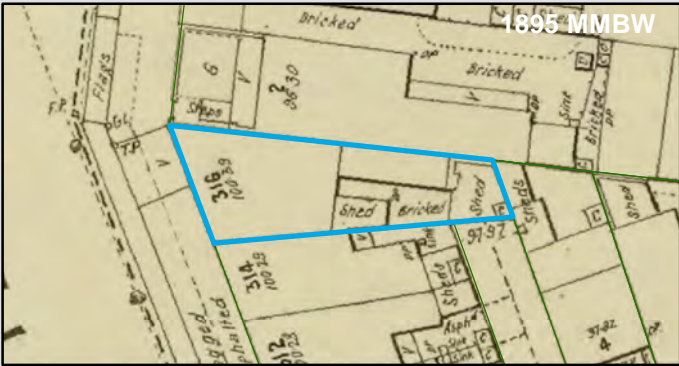
Historic Land Use
Commercial

Key Information Supporting EAO Decision

No current or previous potentially contaminating land uses identified on site.

Additional Considerations

Resources used to make decision



Resources used to make decision

West Melbourne Heritage Review Appendix 2 (May 2016), Site inspection, Historical aerial photographs (1968/9 & 1987)

WEST MELBOURNE EAO - AMENDMENT C309 -
WEST MELBOURNE STRUCTURE PLAN:
PRELIMINARY LAND CONTAMINATION ASSESSMENT

CITY OF MELBOURNE

GIS ID: 7470

COPYRIGHT
Aerial Imagery copyright
City of Melbourne

0 2.5 5 10 15 20 25 metres

SCALE (at A4) (BUILDING MAP) 1:500
DATUM GDA 94, PROJECTION MGA Zone 55

PROJECT: 18113718
DATE: 27 FEB 2019
DRAWN: TPC
CHECKED: IMK




Information contained on this drawing is the copyright of Golder Associates Pty. Ltd. Unauthorised use or reproduction of this plan either wholly or in part without written permission infringes copyright. © Golder Associates Pty. Ltd.

CoM Property ID: 110138

Howard & William Street Reserve
383-389 William Street WEST MELBOURNE VIC 3003



LEGEND

 Parcel Boundary



Action Plan

EAO Recommendation

Do Not Apply EAO

EAO Comment

Site has not identified as being potentially contaminated in accordance with the Potentially Contaminated Land General Practice Note (DSE, 2005)

Resources used to make decision



Site Use Summary

Current Land Use

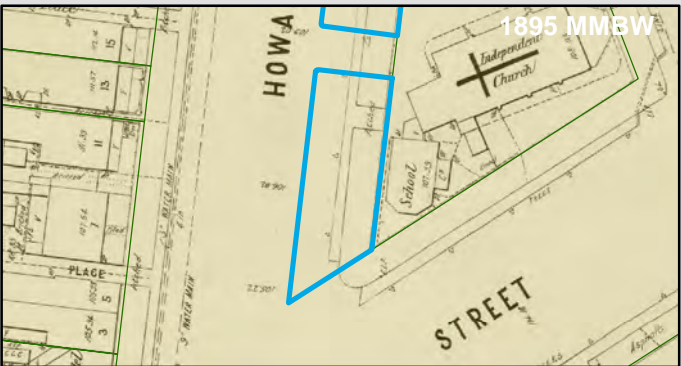
Public land (schools, hospitals, parks)

Historic Land Use

Public land (schools, hospitals, parks)

Key Information Supporting EAO Decision

No current or previous potentially contaminating land uses identified on site.



Additional Considerations

Resources used to make decision

Site inspection, Historical aerial photographs (1968/9 & 1987)

WEST MELBOURNE EAO - AMENDMENT C309 -
WEST MELBOURNE STRUCTURE PLAN:
PRELIMINARY LAND CONTAMINATION ASSESSMENT

CITY OF MELBOURNE

GIS ID: 13644

COPYRIGHT

Aerial Imagery copyright
City of Melbourne

0 5 10 20 30 40 50 metres

SCALE (at A4) (BUILDING MAP) 1:1,000
DATUM GDA 94, PROJECTION MGA Zone 55


PROJECT: 18113718
DATE: 27 FEB 2019
DRAWN: TPC
CHECKED: IMK



Information contained on this drawing is the copyright of Golder Associates Pty. Ltd. Unauthorised use or reproduction of this plan either wholly or in part without written permission infringes copyright. © Golder Associates Pty. Ltd.



LEGEND

 Parcel Boundary

Action Plan

EAO Recommendation

Do Not Apply EAO

EAO Comment

Site has not identified as being potentially contaminated in accordance with the Potentially Contaminated Land General Practice Note (DSE, 2005)

Site Use Summary

Current Land Use
Residential

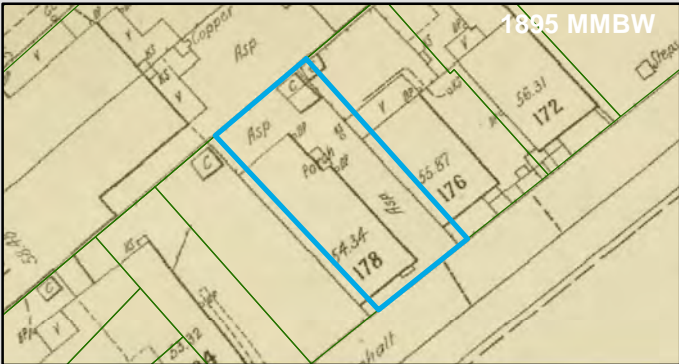
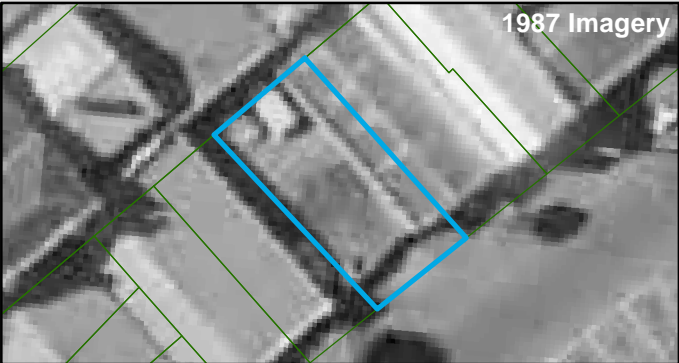
Historic Land Use
Residential

Key Information Supporting EAO Decision

Research indicates this site has currently and previously been used for residential purposes.

Additional Considerations

Resources used to make decision



Resources used to make decision

Site inspection, Historical aerial photographs (1968/9 & 1987)

WEST MELBOURNE EAO - AMENDMENT C309 -
WEST MELBOURNE STRUCTURE PLAN:
PRELIMINARY LAND CONTAMINATION ASSESSMENT

CITY OF MELBOURNE

GIS ID: 5211

COPYRIGHT
Aerial Imagery copyright
City of Melbourne

0 2.5 5 10 15 20 25 metres
SCALE (at A4) (BUILDING MAP) 1:500
DATUM GDA 94, PROJECTION MGA Zone 55
PROJECT: 18113718
DATE: 27 FEB 2019
DRAWN: TPC
CHECKED: IMK



Information contained on this drawing is the copyright of Golder Associates Pty. Ltd. Unauthorised use or reproduction of this plan either wholly or in part without written permission infringes copyright. © Golder Associates Pty. Ltd.

CoM Property ID: 110906 Hawke & Curzon Street Reserve 4A Hawke Street WEST MELBOURNE VIC 3003



LEGEND

 Parcel Boundary



Action Plan

EAO Recommendation

Do Not Apply EAO

EAO Comment

Site has not identified as being potentially contaminated in accordance with the Potentially Contaminated Land General Practice Note (DSE, 2005)

Resources used to make decision



Site Use Summary

Current Land Use

Public land (schools, hospitals, parks)

Historic Land Use

Other (unsure)



Key Information Supporting EAO Decision

No current or previous potentially contaminating land uses identified on site.

Resources used to make decision

Site inspection, Historical aerial photographs (1968/9 & 1987)

Additional Considerations

WEST MELBOURNE EAO - AMENDMENT C309 -
WEST MELBOURNE STRUCTURE PLAN:
PRELIMINARY LAND CONTAMINATION ASSESSMENT

CITY OF MELBOURNE

GIS ID: 6206

COPYRIGHT

Aerial Imagery copyright
City of Melbourne

0 3 6 12 18 24 30 metres

SCALE (at A4) (BUILDING MAP) 1:600
DATUM GDA 94, PROJECTION MGA Zone 55

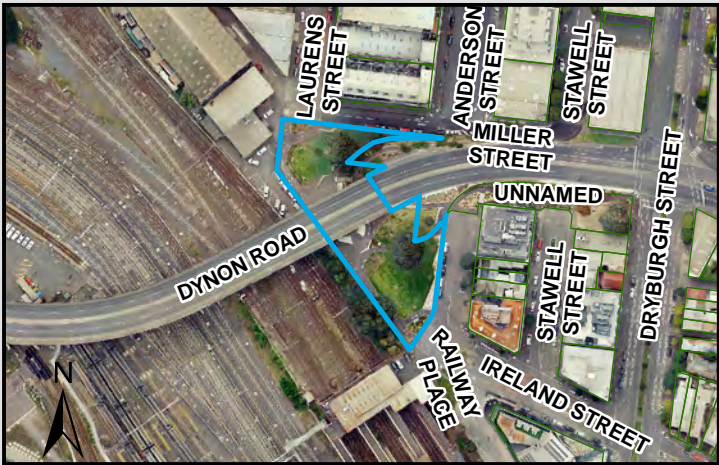
PROJECT: 18113718
DATE: 27 FEB 2019
DRAWN: TPC
CHECKED: IMK




Information contained on this drawing is the copyright of Golder Associates Pty. Ltd. Unauthorised use or reproduction of this plan either wholly or in part without written permission infringes copyright. © Golder Associates Pty. Ltd.

CoM Property ID: 110908

Railway Place & Miller Street Park
1 Anderson Street WEST MELBOURNE VIC 3003



LEGEND

 Parcel Boundary



Action Plan

EAO Recommendation

Do Not Apply EAO

EAO Comment

Site has not identified as being potentially contaminated in accordance with the Potentially Contaminated Land General Practice Note (DSE, 2005)

Site Use Summary

Current Land Use

Public land (schools, hospitals, parks)

Historic Land Use

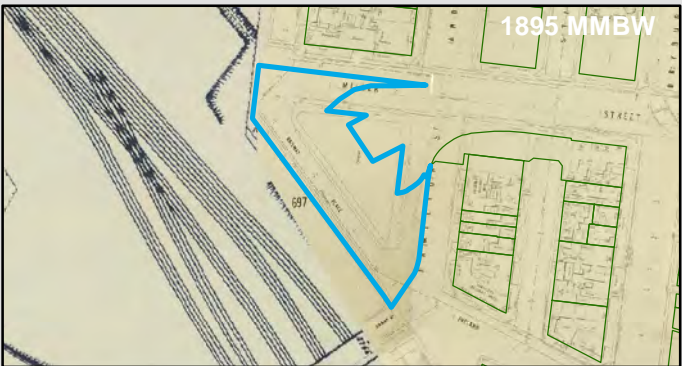
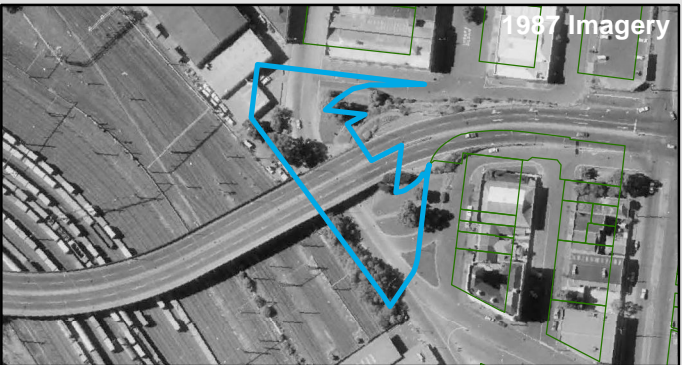
Public land (schools, hospitals, parks)

Key Information Supporting EAO Decision

No current or previous potentially contaminating land uses identified on site.

Additional Considerations

Resources used to make decision



Resources used to make decision

Site inspection, Historical aerial photographs (1968/9 & 1987)

WEST MELBOURNE EAO - AMENDMENT C309 -
WEST MELBOURNE STRUCTURE PLAN:
PRELIMINARY LAND CONTAMINATION ASSESSMENT

CITY OF MELBOURNE

GIS ID: 14290

COPYRIGHT

Aerial Imagery copyright
City of Melbourne

0 15 30 60 90 120 150 metres

SCALE (at A4) (BUILDING MAP) 1:3,600
DATUM GDA 94, PROJECTION MGA Zone 55


PROJECT: 18113718
DATE: 27 FEB 2019
DRAWN: TPC
CHECKED: IMK



Information contained on this drawing is the copyright of Golder Associates Pty. Ltd. Unauthorised use or reproduction of this plan either wholly or in part without written permission infringes copyright. © Golder Associates Pty. Ltd.



LEGEND

 Parcel Boundary



Action Plan

EAO Recommendation

Do Not Apply EAO

EAO Comment

Site has not identified as being potentially contaminated in accordance with the Potentially Contaminated Land General Practice Note (DSE, 2005)

Site Use Summary

Current Land Use

Public land (schools, hospitals, parks)

Historic Land Use

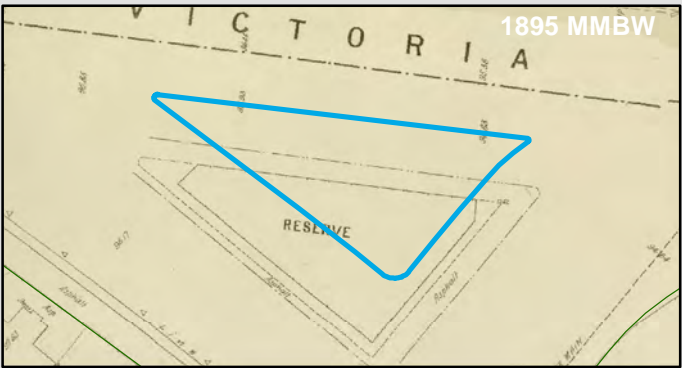
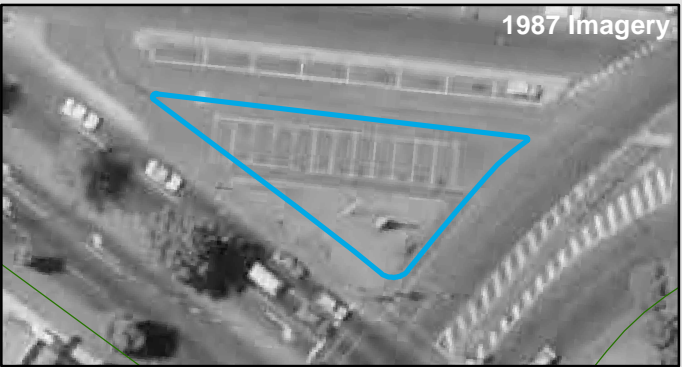
Public land (schools, hospitals, parks)

Key Information Supporting EAO Decision

No current or previous potentially contaminating land uses identified on site.

Additional Considerations

Resources used to make decision



Resources used to make decision

Site inspection, Historical aerial photographs (1968/9 & 1987)

WEST MELBOURNE EAO - AMENDMENT C309 -
WEST MELBOURNE STRUCTURE PLAN:
PRELIMINARY LAND CONTAMINATION ASSESSMENT

CITY OF MELBOURNE

GIS ID: 13819

COPYRIGHT

Aerial Imagery copyright
City of Melbourne



SCALE (at A4) (BUILDING MAP) 1:1,000
DATUM GDA 94, PROJECTION MGA Zone 55

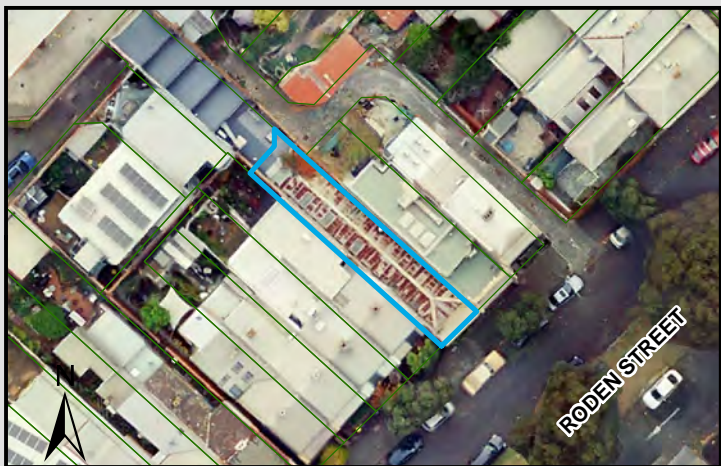
PROJECT: 18113718
DATE: 27 FEB 2019
DRAWN: TPC
CHECKED: IMK



Information contained on this drawing is the copyright of Golder Associates Pty. Ltd. Unauthorised use or reproduction of this plan either wholly or in part without written permission infringes copyright. © Golder Associates Pty. Ltd.

CoM Property ID: 110916

52 Roden Street WEST MELBOURNE VIC 3003



LEGEND

 Parcel Boundary



Action Plan

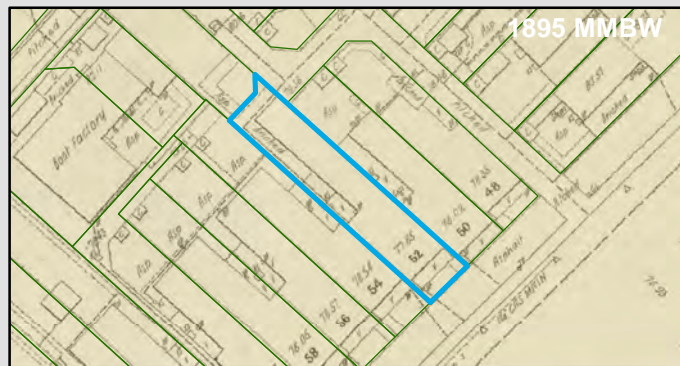
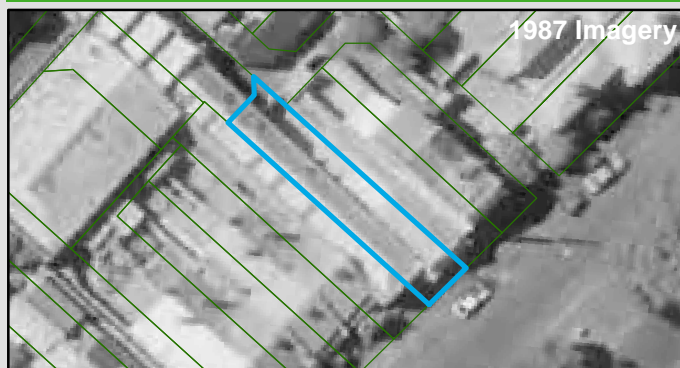
EAO Recommendation

Do Not Apply EAO

EAO Comment

Site has not identified as being potentially contaminated in accordance with the Potentially Contaminated Land General Practice Note (DSE, 2005)

Resources used to make decision



Site Use Summary

Current Land Use
Residential

Historic Land Use
Residential

Key Information Supporting EAO Decision

Research indicates this site has currently and previously been used for residential purposes.

Additional Considerations

Resources used to make decision

Site inspection, Historical aerial photographs (1968/9 & 1987)

WEST MELBOURNE EAO - AMENDMENT C309 -
WEST MELBOURNE STRUCTURE PLAN:
PRELIMINARY LAND CONTAMINATION ASSESSMENT

CITY OF MELBOURNE

GIS ID: 7625

COPYRIGHT

Aerial Imagery copyright
City of Melbourne

0 4 8 16 24 32 40 metres

SCALE (at A4) (BUILDING MAP) 1:800
DATUM GDA 94, PROJECTION MGA Zone 55

PROJECT: 18113718
DATE: 27 FEB 2019
DRAWN: TPC
CHECKED: IMK



Information contained on this drawing is the copyright of Golder Associates Pty. Ltd. Unauthorised use or reproduction of this plan either wholly or in part without written permission infringes copyright. © Golder Associates Pty. Ltd.



LEGEND

 Parcel Boundary



Action Plan

EAO Recommendation

Do Not Apply EAO

EAO Comment

Site has not identified as being potentially contaminated in accordance with the Potentially Contaminated Land General Practice Note (DSE, 2005)

Site Use Summary

Current Land Use
Residential

Historic Land Use
Residential

Key Information Supporting EAO Decision

Research indicates this site has currently and previously been used for residential purposes.

Additional Considerations

Resources used to make decision



Resources used to make decision

Site inspection, Historical aerial photographs (1968/9 & 1987), MMBW Maps (1895)

WEST MELBOURNE EAO - AMENDMENT C309 -
WEST MELBOURNE STRUCTURE PLAN:
PRELIMINARY LAND CONTAMINATION ASSESSMENT

CITY OF MELBOURNE

GIS ID: 6495

COPYRIGHT

Aerial Imagery copyright
City of Melbourne

0 5 10 20 30 40 50 metres

SCALE (at A4) (BUILDING MAP) 1:1,100
DATUM GDA 94, PROJECTION MGA Zone 55

PROJECT: 18113718
DATE: 27 FEB 2019
DRAWN: TPC
CHECKED: IMK



Information contained on this drawing is the copyright of Golder Associates Pty. Ltd. Unauthorised use or reproduction of this plan either wholly or in part without written permission infringes copyright. © Golder Associates Pty. Ltd.

CoM Property ID: 110969

87 Rosslyn Street WEST MELBOURNE VIC 3003



LEGEND

 Parcel Boundary

Action Plan

EAO Recommendation

Do Not Apply EAO

EAO Comment

Site has not identified as being potentially contaminated in accordance with the Potentially Contaminated Land General Practice Note (DSE, 2005)

Site Use Summary

Current Land Use
Residential

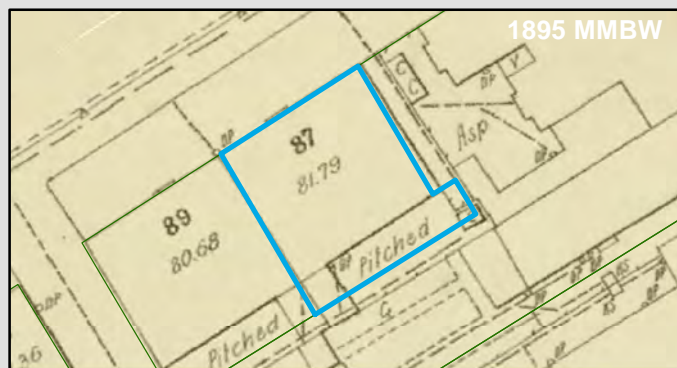
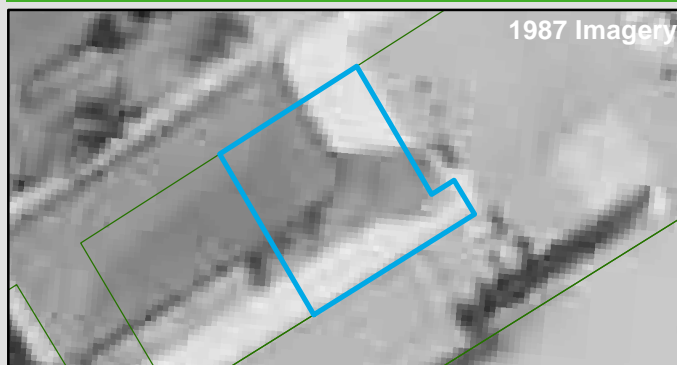
Historic Land Use
Residential

Key Information Supporting EAO Decision

Research indicates this site has currently and previously been used for residential purposes.

Additional Considerations

Resources used to make decision



Resources used to make decision

Site inspection, Historical aerial photographs (1968/9 & 1987)

WEST MELBOURNE EAO - AMENDMENT C309 -
WEST MELBOURNE STRUCTURE PLAN:
PRELIMINARY LAND CONTAMINATION ASSESSMENT

CITY OF MELBOURNE

GIS ID: 6496

COPYRIGHT

Aerial Imagery copyright
City of Melbourne

0 2 4 8 12 16 20 metres

SCALE (at A4) (BUILDING MAP) 1:400
DATUM GDA 94, PROJECTION MGA Zone 55

PROJECT: 18113718
DATE: 27 FEB 2019
DRAWN: TPC
CHECKED: IMK



CoM Property ID: 111162

599 Spencer Street WEST MELBOURNE VIC 3003



LEGEND

 Parcel Boundary

Action Plan

EAO Recommendation

Do Not Apply EAO

EAO Comment

Site has not identified as being potentially contaminated in accordance with the Potentially Contaminated Land General Practice Note (DSE, 2005)

Site Use Summary

Current Land Use
Residential

Historic Land Use
Residential

Key Information Supporting EAO Decision

Research indicates this site has currently and previously been used for residential purposes.

Additional Considerations

Resources used to make decision



Resources used to make decision

Site inspection, Historical aerial photographs (1968/9 & 1987)

WEST MELBOURNE EAO - AMENDMENT C309 -
WEST MELBOURNE STRUCTURE PLAN:
PRELIMINARY LAND CONTAMINATION ASSESSMENT

CITY OF MELBOURNE

GIS ID: 14667

COPYRIGHT

Aerial Imagery copyright
City of Melbourne

0 4 8 16 24 32 40 metres

SCALE (at A4) (BUILDING MAP) 1:800
DATUM GDA 94, PROJECTION MGA Zone 55


PROJECT: 18113718
DATE: 27 FEB 2019
DRAWN: TPC
CHECKED: IMK



Information contained on this drawing is the copyright of Golder Associates Pty. Ltd. Unauthorised use or reproduction of this plan either wholly or in part without written permission infringes copyright. © Golder Associates Pty. Ltd.



LEGEND

 Parcel Boundary

Action Plan

EAO Recommendation

Do Not Apply EAO

EAO Comment

Site has not identified as being potentially contaminated in accordance with the Potentially Contaminated Land General Practice Note (DSE, 2005)

Site Use Summary

Current Land Use
Residential

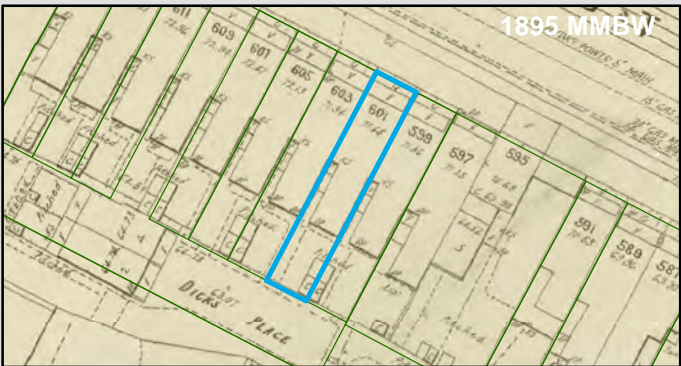
Historic Land Use
Residential

Key Information Supporting EAO Decision

Research indicates this site has currently and previously been used for residential purposes.

Additional Considerations

Resources used to make decision



Resources used to make decision
Site inspection, Historical aerial photographs (1968/9 & 1987)

WEST MELBOURNE EAO - AMENDMENT C309 -
WEST MELBOURNE STRUCTURE PLAN:
PRELIMINARY LAND CONTAMINATION ASSESSMENT

CITY OF MELBOURNE

GIS ID: 14659

COPYRIGHT
Aerial Imagery copyright
City of Melbourne

0 4 8 16 24 32 40 metres
SCALE (at A4) (BUILDING MAP) 1:800
DATUM GDA 94, PROJECTION MGA Zone 55
PROJECT: 18113718
DATE: 27 FEB 2019
DRAWN: TPC
CHECKED: IMK



CoM Property ID: 111164

603 Spencer Street WEST MELBOURNE VIC 3003



LEGEND

 Parcel Boundary

Action Plan

EAO Recommendation

Do Not Apply EAO

EAO Comment

Site has not identified as being potentially contaminated in accordance with the Potentially Contaminated Land General Practice Note (DSE, 2005)

Site Use Summary

Current Land Use
Residential

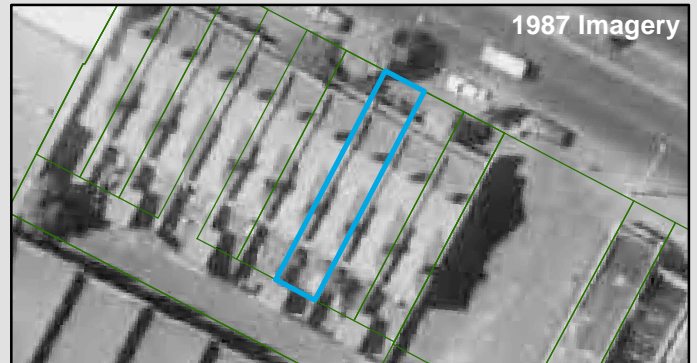
Historic Land Use
Residential

Key Information Supporting EAO Decision

Research indicates this site has currently and previously been used for residential purposes.

Additional Considerations

Resources used to make decision



Resources used to make decision

Site inspection, Historical aerial photographs (1968/9 & 1987)

WEST MELBOURNE EAO - AMENDMENT C309 -
WEST MELBOURNE STRUCTURE PLAN:
PRELIMINARY LAND CONTAMINATION ASSESSMENT

CITY OF MELBOURNE

GIS ID: 14660

COPYRIGHT

Aerial Imagery copyright
City of Melbourne

0 4 8 16 24 32 40 metres

SCALE (at A4) (BUILDING MAP) 1:800
DATUM GDA 94, PROJECTION MGA Zone 55


PROJECT: 18113718
DATE: 27 FEB 2019
DRAWN: TPC
CHECKED: IMK



Information contained on this drawing is the copyright of Golder Associates Pty. Ltd. Unauthorised use or reproduction of this plan either wholly or in part without written permission infringes copyright. © Golder Associates Pty. Ltd.



LEGEND

 Parcel Boundary



Action Plan

EAO Recommendation

Do Not Apply EAO

EAO Comment

Site has not identified as being potentially contaminated in accordance with the Potentially Contaminated Land General Practice Note (DSE, 2005)

Site Use Summary

Current Land Use
Residential

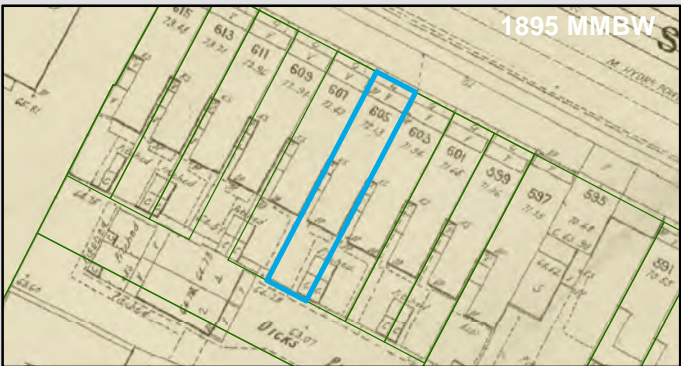
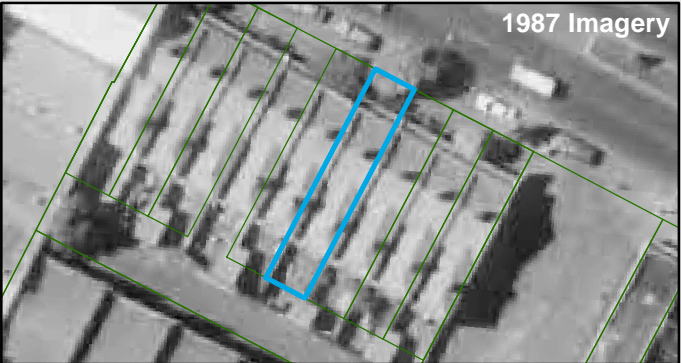
Historic Land Use
Residential

Key Information Supporting EAO Decision

Research indicates this site has currently and previously been used for residential purposes.

Additional Considerations

Resources used to make decision



Resources used to make decision

Site inspection, Historical aerial photographs (1968/9 & 1987)

WEST MELBOURNE EAO - AMENDMENT C309 -
WEST MELBOURNE STRUCTURE PLAN:
PRELIMINARY LAND CONTAMINATION ASSESSMENT

CITY OF MELBOURNE

GIS ID: 14661

COPYRIGHT
Aerial Imagery copyright
City of Melbourne



SCALE (at A4) (BUILDING MAP) 1:800
DATUM GDA 94, PROJECTION MGA Zone 55

PROJECT: 18113718
DATE: 27 FEB 2019
DRAWN: TPC
CHECKED: IMK



Information contained on this drawing is the copyright of Golder Associates Pty. Ltd. Unauthorised use or reproduction of this plan either wholly or in part without written permission infringes copyright. © Golder Associates Pty. Ltd.

CoM Property ID: 111166

607 Spencer Street WEST MELBOURNE VIC 3003



LEGEND

 Parcel Boundary



Action Plan

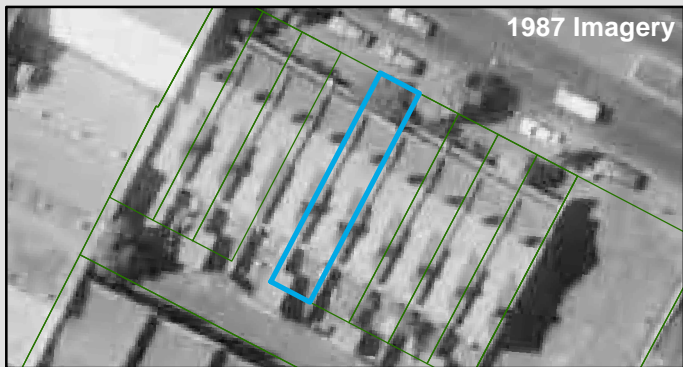
EAO Recommendation

Do Not Apply EAO

EAO Comment

Site has not identified as being potentially contaminated in accordance with the Potentially Contaminated Land General Practice Note (DSE, 2005)

Resources used to make decision



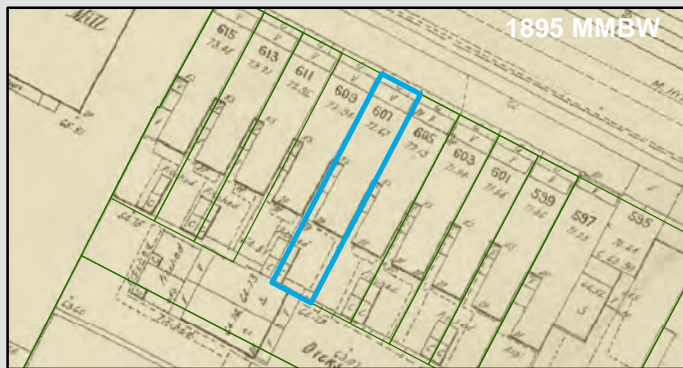
Site Use Summary

Current Land Use
Residential

Historic Land Use
Residential

Key Information Supporting EAO Decision

Research indicates this site has currently and previously been used for residential purposes.



Additional Considerations

Resources used to make decision

Site inspection, Historical aerial photographs (1968/9 & 1987)

WEST MELBOURNE EAO - AMENDMENT C309 -
WEST MELBOURNE STRUCTURE PLAN:
PRELIMINARY LAND CONTAMINATION ASSESSMENT

CITY OF MELBOURNE

GIS ID: 14662

COPYRIGHT

Aerial Imagery copyright
City of Melbourne

0 4 8 16 24 32 40 metres

SCALE (at A4) (BUILDING MAP) 1:800
DATUM GDA 94, PROJECTION MGA Zone 55

PROJECT: 18113718
DATE: 27 FEB 2019
DRAWN: TPC
CHECKED: IMK



CoM Property ID: 111168

611 Spencer Street WEST MELBOURNE VIC 3003



LEGEND

 Parcel Boundary



Action Plan

EAO Recommendation

Do Not Apply EAO

EAO Comment

Site has not identified as being potentially contaminated in accordance with the Potentially Contaminated Land General Practice Note (DSE, 2005)

Site Use Summary

Current Land Use
Residential

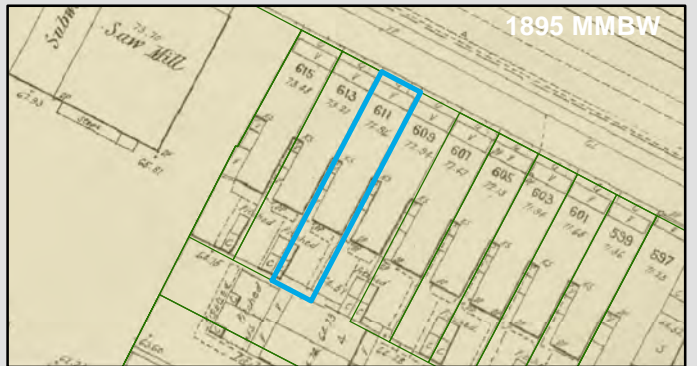
Historic Land Use
Residential

Key Information Supporting EAO Decision

Research indicates this site has currently and previously been used for residential purposes.

Additional Considerations

Resources used to make decision



Resources used to make decision

Site inspection, Historical aerial photographs (1968/9 & 1987)

WEST MELBOURNE EAO - AMENDMENT C309 -
WEST MELBOURNE STRUCTURE PLAN:
PRELIMINARY LAND CONTAMINATION ASSESSMENT

CITY OF MELBOURNE

GIS ID: 14664

COPYRIGHT

Aerial Imagery copyright
City of Melbourne

0 4 8 16 24 32 40 metres

SCALE (at A4) (BUILDING MAP) 1:800
DATUM GDA 94, PROJECTION MGA Zone 55

PROJECT: 18113718
DATE: 27 FEB 2019
DRAWN: TPC
CHECKED: IMK



CoM Property ID: 111169

613 Spencer Street WEST MELBOURNE VIC 3003



LEGEND

 Parcel Boundary



Action Plan

EAO Recommendation

Do Not Apply EAO

EAO Comment

Site has not identified as being potentially contaminated in accordance with the Potentially Contaminated Land General Practice Note (DSE, 2005)

Site Use Summary

Current Land Use
Residential

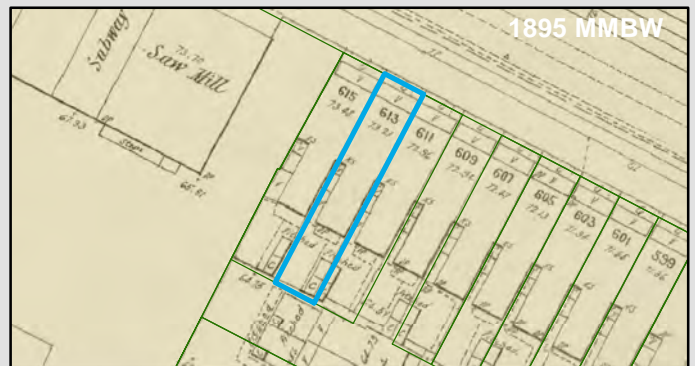
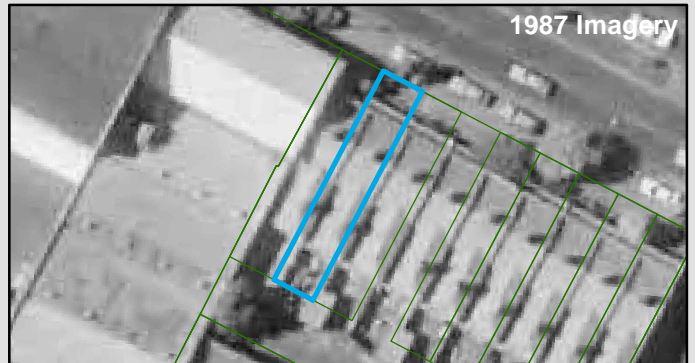
Historic Land Use
Residential

Key Information Supporting EAO Decision

Research indicates this site has currently and previously been used for residential purposes.

Additional Considerations

Resources used to make decision



Resources used to make decision

Site inspection, Historical aerial photographs (1968/9 & 1987)

WEST MELBOURNE EAO - AMENDMENT C309 -
WEST MELBOURNE STRUCTURE PLAN:
PRELIMINARY LAND CONTAMINATION ASSESSMENT

CITY OF MELBOURNE

GIS ID: 14665

COPYRIGHT

Aerial Imagery copyright
City of Melbourne

0 4 8 16 24 32 40 metres

SCALE (at A4) (BUILDING MAP) 1:800
DATUM GDA 94, PROJECTION MGA Zone 55

PROJECT: 18113718
DATE: 27 FEB 2019
DRAWN: TPC
CHECKED: IMK



CoM Property ID: 111170

615 Spencer Street WEST MELBOURNE VIC 3003



LEGEND

 Parcel Boundary

Action Plan

EAO Recommendation

Do Not Apply EAO

EAO Comment

Site has not identified as being potentially contaminated in accordance with the Potentially Contaminated Land General Practice Note (DSE, 2005)

Site Use Summary

Current Land Use
Residential

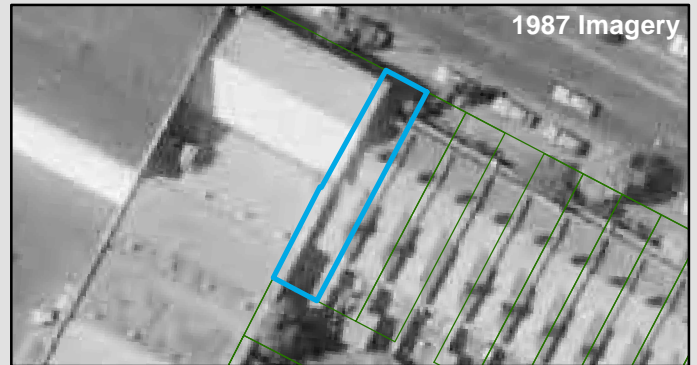
Historic Land Use
Residential

Key Information Supporting EAO Decision

Research indicates this site has currently and previously been used for residential purposes.

Additional Considerations

Resources used to make decision



Resources used to make decision

Site inspection, Historical aerial photographs (1968/9 & 1987)

WEST MELBOURNE EAO - AMENDMENT C309 -
WEST MELBOURNE STRUCTURE PLAN:
PRELIMINARY LAND CONTAMINATION ASSESSMENT

CITY OF MELBOURNE

GIS ID: 14666

COPYRIGHT

Aerial Imagery copyright
City of Melbourne

0 4 8 16 24 32 40 metres

SCALE (at A4) (BUILDING MAP) 1:800
DATUM GDA 94, PROJECTION MGA Zone 55

PROJECT: 18113718
DATE: 27 FEB 2019
DRAWN: TPC
CHECKED: IMK



Information contained on this drawing is the copyright of Golder Associates Pty. Ltd. Unauthorised use or reproduction of this plan either wholly or in part without written permission infringes copyright. © Golder Associates Pty. Ltd.



LEGEND

 Parcel Boundary



Action Plan

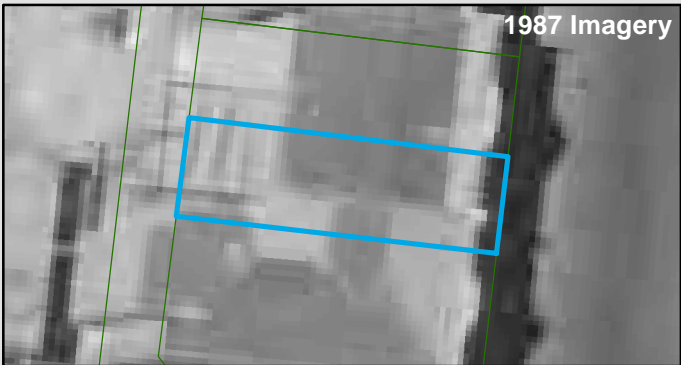
EAO Recommendation

Do Not Apply EAO

EAO Comment

Site has not identified as being potentially contaminated in accordance with the Potentially Contaminated Land General Practice Note (DSE, 2005)

Resources used to make decision



Site Use Summary

Current Land Use
Commercial

Historic Land Use
Commercial

Key Information Supporting EAO Decision

No current or previous potentially contaminating land uses identified on site.



Additional Considerations

Resources used to make decision

West Melbourne Heritage Review Appendix 2 (May 2016), Site inspection, Historical aerial photographs (1968/9 & 1987)

WEST MELBOURNE EAO - AMENDMENT C309 -
WEST MELBOURNE STRUCTURE PLAN:
PRELIMINARY LAND CONTAMINATION ASSESSMENT

CITY OF MELBOURNE

GIS ID: 7041

COPYRIGHT
Aerial Imagery copyright
City of Melbourne


0 2 4 8 12 16 20 metres
SCALE (at A4) (BUILDING MAP) 1:400
DATUM GDA 94, PROJECTION MGA Zone 55
PROJECT: 18113718
DATE: 27 FEB 2019
DRAWN: TPC
CHECKED: IMK



Information contained on this drawing is the copyright of Golder Associates Pty. Ltd. Unauthorised use or reproduction of this plan either wholly or in part without written permission infringes copyright. © Golder Associates Pty. Ltd.



LEGEND

 Parcel Boundary



Action Plan

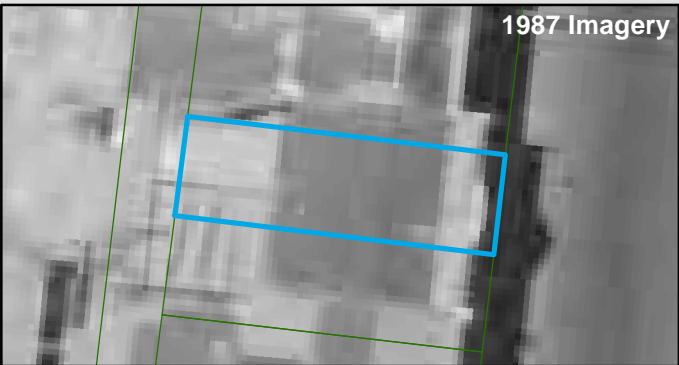
EAO Recommendation

Do Not Apply EAO

EAO Comment

Site has not identified as being potentially contaminated in accordance with the Potentially Contaminated Land General Practice Note (DSE, 2005)

Resources used to make decision



Site Use Summary

Current Land Use
Commercial

Historic Land Use
Commercial



Key Information Supporting EAO Decision

No current or previous potentially contaminating land uses identified on site.

Resources used to make decision

West Melbourne Heritage Review Appendix 2 (May 2016), Site inspection, Historical aerial photographs (1968/9 & 1987)

Additional Considerations

WEST MELBOURNE EAO - AMENDMENT C309 -
WEST MELBOURNE STRUCTURE PLAN:
PRELIMINARY LAND CONTAMINATION ASSESSMENT

CITY OF MELBOURNE

GIS ID: 7042

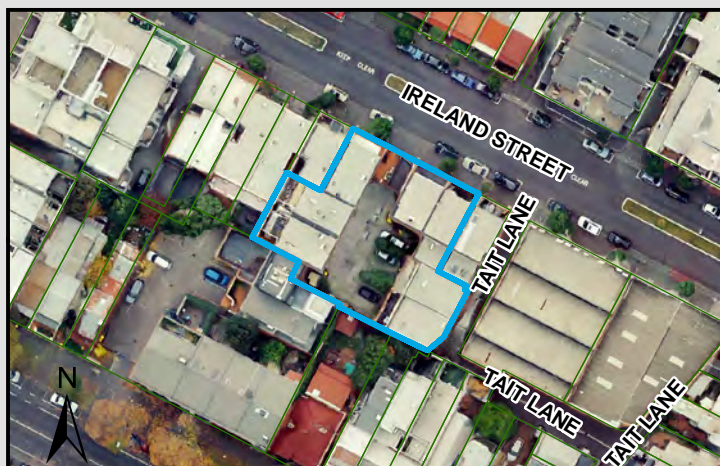
COPYRIGHT
Aerial Imagery copyright
City of Melbourne

0 2 4 8 12 16 20 metres
SCALE (at A4) (BUILDING MAP) 1:400
DATUM GDA 94, PROJECTION MGA Zone 55
PROJECT: 18113718
DATE: 27 FEB 2019
DRAWN: TPC
CHECKED: IMK



CoM Property ID: 111498

31-37 Ireland Street WEST MELBOURNE VIC 3003



LEGEND

 Parcel Boundary

Action Plan

EAO Recommendation

Do Not Apply EAO

EAO Comment

Site has not identified as being potentially contaminated in accordance with the Potentially Contaminated Land General Practice Note (DSE, 2005)

Resources used to make decision



Site Use Summary

Current Land Use
Residential

Historic Land Use
Residential

Key Information Supporting EAO Decision

Research indicates this site has currently and previously been used for residential purposes.

Additional Considerations

Resources used to make decision

Site inspection, Historical aerial photographs (1968/9 & 1987)

WEST MELBOURNE EAO - AMENDMENT C309 -
WEST MELBOURNE STRUCTURE PLAN:
PRELIMINARY LAND CONTAMINATION ASSESSMENT

CITY OF MELBOURNE

GIS ID: 7043

COPYRIGHT

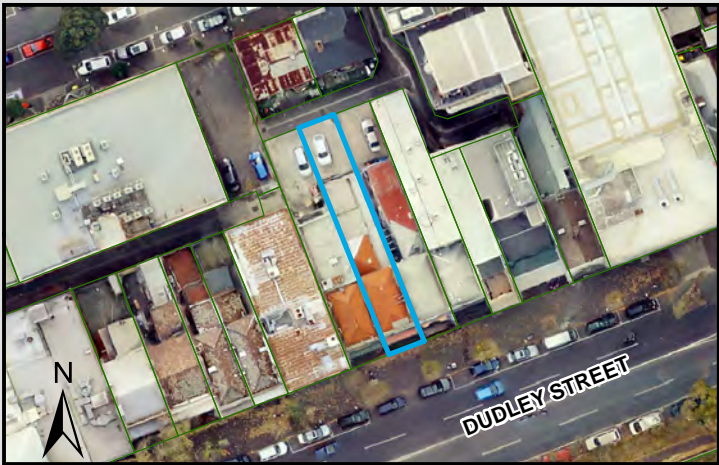
Aerial Imagery copyright
City of Melbourne

0 5 10 20 30 40 50 metres
SCALE (at A4) (BUILDING MAP) 1:1,300
DATUM GDA 94, PROJECTION MGA Zone 55

PROJECT: 18113718
DATE: 27 FEB 2019
DRAWN: TPC
CHECKED: IMK



Information contained on this drawing is the copyright of Golder Associates Pty. Ltd. Unauthorised use or reproduction of this plan either wholly or in part without written permission infringes copyright. © Golder Associates Pty. Ltd.



LEGEND

 Parcel Boundary



Action Plan

EAO Recommendation

Do Not Apply EAO

EAO Comment

Site has not identified as being potentially contaminated in accordance with the Potentially Contaminated Land General Practice Note (DSE, 2005)

Site Use Summary

Current Land Use
Residential

Historic Land Use
Residential

Key Information Supporting EAO Decision

Research indicates this site has currently and previously been used for residential purposes.

Additional Considerations

Resources used to make decision



Resources used to make decision

Site inspection, Historical aerial photographs (1968/9 & 1987)

WEST MELBOURNE EAO - AMENDMENT C309 -
WEST MELBOURNE STRUCTURE PLAN:
PRELIMINARY LAND CONTAMINATION ASSESSMENT

CITY OF MELBOURNE

GIS ID: 7044

COPYRIGHT

Aerial Imagery copyright
City of Melbourne

0 5 10 20 30 40 50 metres

SCALE (at A4) (BUILDING MAP) 1:1,100
DATUM GDA 94, PROJECTION MGA Zone 55

PROJECT: 18113718
DATE: 27 FEB 2019
DRAWN: TPC
CHECKED: IMK



Information contained on this drawing is the copyright of Golder Associates Pty. Ltd. Unauthorised use or reproduction of this plan either wholly or in part without written permission infringes copyright. © Golder Associates Pty. Ltd.

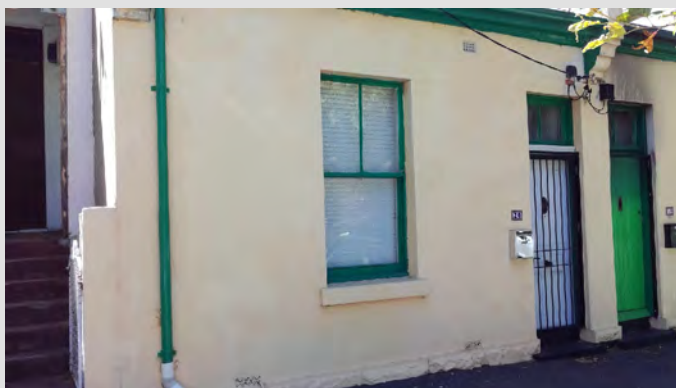
CoM Property ID: 506137

20 Chetwynd Street WEST MELBOURNE VIC 3003



LEGEND

 Parcel Boundary



Action Plan

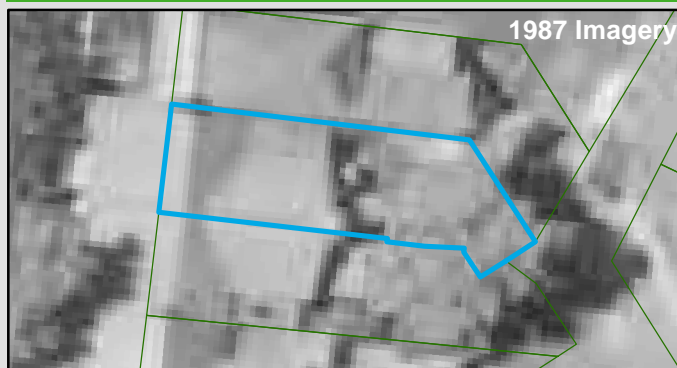
EAO Recommendation

Do Not Apply EAO

EAO Comment

Site has not identified as being potentially contaminated in accordance with the Potentially Contaminated Land General Practice Note (DSE, 2005)

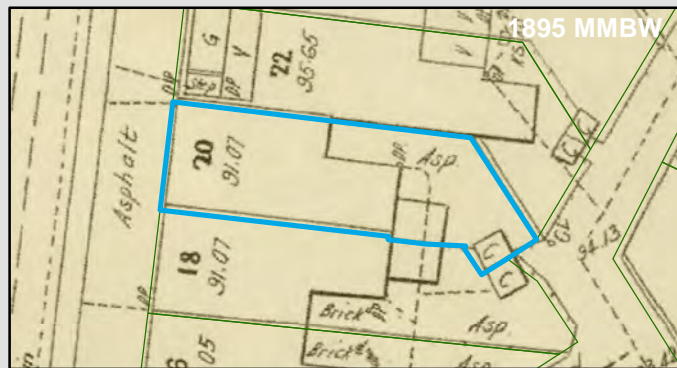
Resources used to make decision



Site Use Summary

Current Land Use
Residential

Historic Land Use
Residential



Key Information Supporting EAO Decision

Research indicates this site has currently and previously been used for residential purposes.

Additional Considerations

Resources used to make decision

Site inspection, Historical aerial photographs (1968/9 & 1987)

WEST MELBOURNE EAO - AMENDMENT C309 -
WEST MELBOURNE STRUCTURE PLAN:
PRELIMINARY LAND CONTAMINATION ASSESSMENT

CITY OF MELBOURNE

GIS ID: 8781

COPYRIGHT

Aerial Imagery copyright
City of Melbourne

0 2 4 8 12 16 20 metres

SCALE (at A4) (BUILDING MAP) 1:400
DATUM GDA 94, PROJECTION MGA Zone 55


PROJECT: 18113718
DATE: 27 FEB 2019
DRAWN: TPC
CHECKED: IMK



Information contained on this drawing is the copyright of Golder Associates Pty. Ltd. Unauthorised use or reproduction of this plan either wholly or in part without written permission infringes copyright. © Golder Associates Pty. Ltd.



LEGEND

 Parcel Boundary

Action Plan

EAO Recommendation

Do Not Apply EAO

EAO Comment

Site has not identified as being potentially contaminated in accordance with the Potentially Contaminated Land General Practice Note (DSE, 2005)

Site Use Summary

Current Land Use
Residential

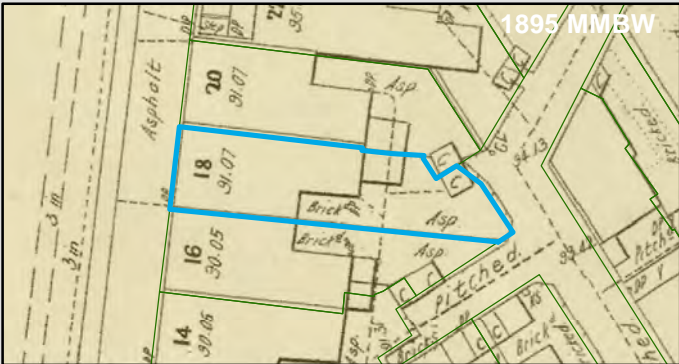
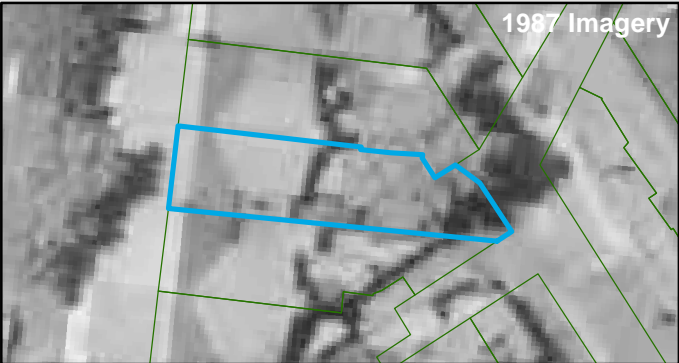
Historic Land Use
Residential

Key Information Supporting EAO Decision

Research indicates this site has currently and previously been used for residential purposes.

Additional Considerations

Resources used to make decision



Resources used to make decision

Site inspection, Historical aerial photographs (1968/9 & 1987)

WEST MELBOURNE EAO - AMENDMENT C309 -
WEST MELBOURNE STRUCTURE PLAN:
PRELIMINARY LAND CONTAMINATION ASSESSMENT

CITY OF MELBOURNE

GIS ID: 8780

COPYRIGHT
Aerial Imagery copyright
City of Melbourne

0 2.5 5 10 15 20 25 metres
SCALE (at A4) (BUILDING MAP) 1:500
DATUM GDA 94, PROJECTION MGA Zone 55
PROJECT: 18113718
DATE: 27 FEB 2019
DRAWN: TPC
CHECKED: IMK



Information contained on this drawing is the copyright of Golder Associates Pty. Ltd. Unauthorised use or reproduction of this plan either wholly or in part without written permission infringes copyright. © Golder Associates Pty. Ltd.

CoM Property ID: 506139

16 Chetwynd Street WEST MELBOURNE VIC 3003



LEGEND

 Parcel Boundary



Action Plan

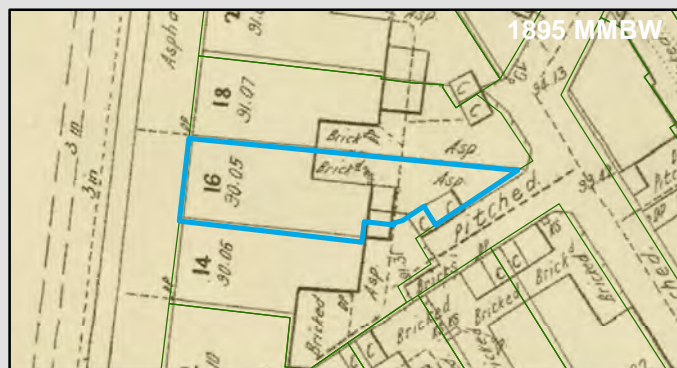
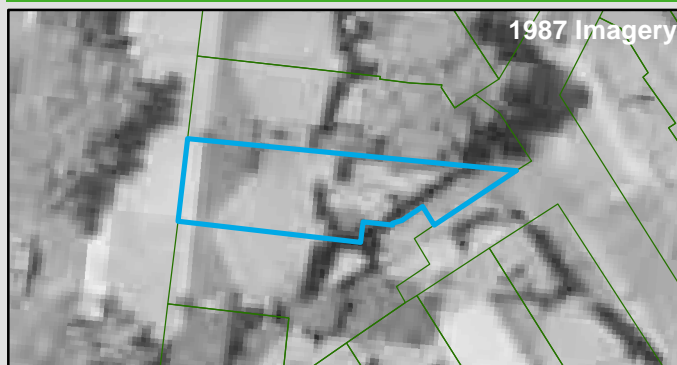
EAO Recommendation

Do Not Apply EAO

EAO Comment

Site has not identified as being potentially contaminated in accordance with the Potentially Contaminated Land General Practice Note (DSE, 2005)

Resources used to make decision



Site Use Summary

Current Land Use
Residential

Historic Land Use
Residential

Key Information Supporting EAO Decision

Research indicates this site has currently and previously been used for residential purposes.

Additional Considerations

Resources used to make decision

Site inspection, Historical aerial photographs (1968/9 & 1987)

WEST MELBOURNE EAO - AMENDMENT C309 -
WEST MELBOURNE STRUCTURE PLAN:
PRELIMINARY LAND CONTAMINATION ASSESSMENT

CITY OF MELBOURNE

GIS ID: 8779

COPYRIGHT

Aerial Imagery copyright
City of Melbourne

0 2.5 5 10 15 20 25 metres

SCALE (at A4) (BUILDING MAP) 1:500
DATUM GDA 94, PROJECTION MGA Zone 55

PROJECT: 18113718
DATE: 27 FEB 2019
DRAWN: TPC
CHECKED: IMK



Information contained on this drawing is the copyright of Golder Associates Pty. Ltd. Unauthorised use or reproduction of this plan either wholly or in part without written permission infringes copyright. © Golder Associates Pty. Ltd.

CoM Property ID: 506140

14 Chetwynd Street WEST MELBOURNE VIC 3003



LEGEND

 Parcel Boundary



Action Plan

EAO Recommendation

Do Not Apply EAO

EAO Comment

Site has not identified as being potentially contaminated in accordance with the Potentially Contaminated Land General Practice Note (DSE, 2005)

Site Use Summary

Current Land Use
Residential

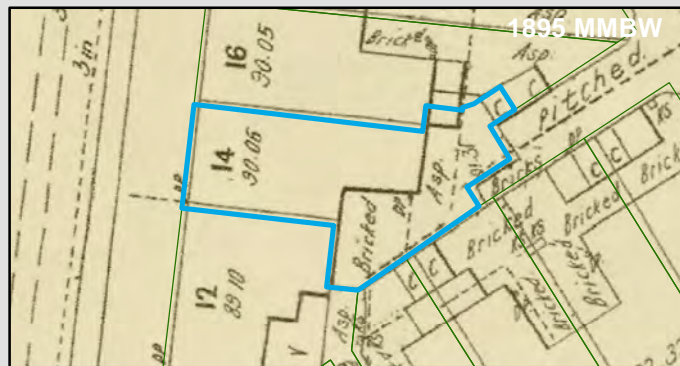
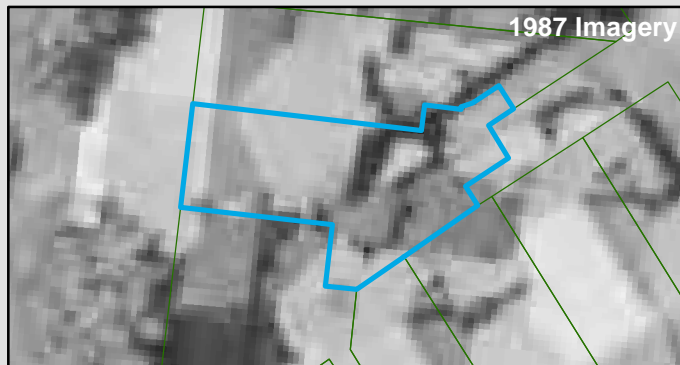
Historic Land Use
Residential

Key Information Supporting EAO Decision

Research indicates this site has currently and previously been used for residential purposes.

Additional Considerations

Resources used to make decision



Resources used to make decision

Site inspection, Historical aerial photographs (1968/9 & 1987)

WEST MELBOURNE EAO - AMENDMENT C309 -
WEST MELBOURNE STRUCTURE PLAN:
PRELIMINARY LAND CONTAMINATION ASSESSMENT

CITY OF MELBOURNE

GIS ID: 8778

COPYRIGHT

Aerial Imagery copyright
City of Melbourne

0 2 4 8 12 16 20 metres

SCALE (at A4) (BUILDING MAP) 1:400
DATUM GDA 94, PROJECTION MGA Zone 55

PROJECT: 18113718
DATE: 27 FEB 2019
DRAWN: TPC
CHECKED: IMK



Information contained on this drawing is the copyright of Golder Associates Pty. Ltd. Unauthorised use or reproduction of this plan either wholly or in part without written permission infringes copyright. © Golder Associates Pty. Ltd.



LEGEND

 Parcel Boundary

Action Plan

EAO Recommendation

Do Not Apply EAO

EAO Comment

Site has not identified as being potentially contaminated in accordance with the Potentially Contaminated Land General Practice Note (DSE, 2005)

Site Use Summary

Current Land Use
Residential

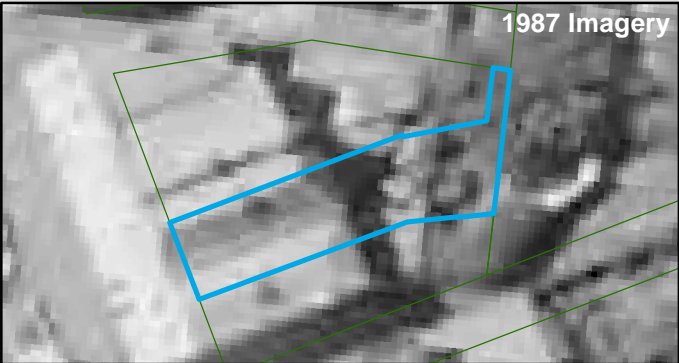
Historic Land Use
Residential

Key Information Supporting EAO Decision

Research indicates this site has currently and previously been used for residential purposes.

Additional Considerations

Resources used to make decision



Resources used to make decision

Site inspection, Historical aerial photographs (1968/9 & 1987)

WEST MELBOURNE EAO - AMENDMENT C309 -
WEST MELBOURNE STRUCTURE PLAN:
PRELIMINARY LAND CONTAMINATION ASSESSMENT

CITY OF MELBOURNE

GIS ID: 13259

COPYRIGHT
Aerial Imagery copyright
City of Melbourne


0 2 4 8 12 16 20 metres
SCALE (at A4) (BUILDING MAP) 1:400
DATUM GDA 94, PROJECTION MGA Zone 55
PROJECT: 18113718
DATE: 27 FEB 2019
DRAWN: TPC
CHECKED: IMK



Information contained on this drawing is the copyright of Golder Associates Pty. Ltd. Unauthorised use or reproduction of this plan either wholly or in part without written permission infringes copyright. © Golder Associates Pty. Ltd.



LEGEND

 Parcel Boundary

Action Plan

EAO Recommendation

Do Not Apply EAO

EAO Comment

Site has not identified as being potentially contaminated in accordance with the Potentially Contaminated Land General Practice Note (DSE, 2005)

Site Use Summary

Current Land Use
Residential

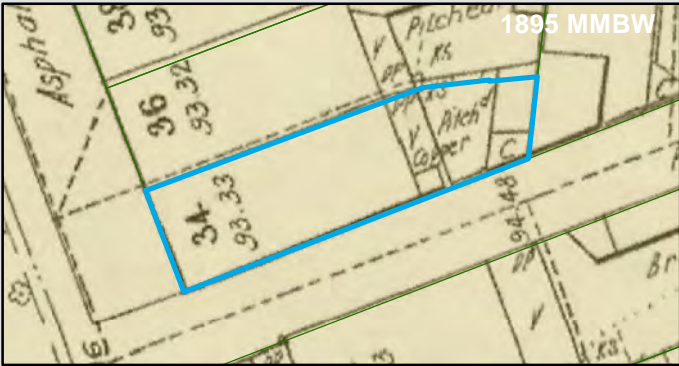
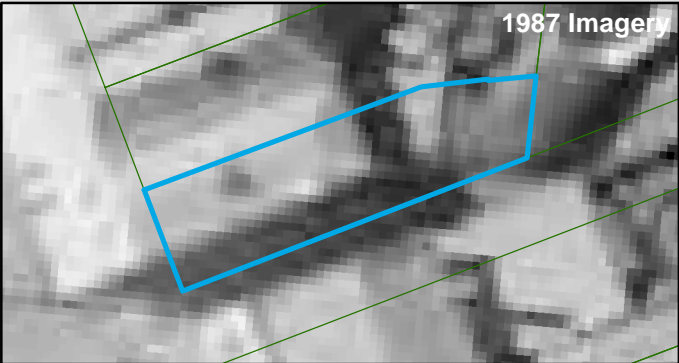
Historic Land Use
Residential

Key Information Supporting EAO Decision

Research indicates this site has currently and previously been used for residential purposes.

Additional Considerations

Resources used to make decision



Resources used to make decision

Site inspection, Historical aerial photographs (1968/9 & 1987)

WEST MELBOURNE EAO - AMENDMENT C309 -
WEST MELBOURNE STRUCTURE PLAN:
PRELIMINARY LAND CONTAMINATION ASSESSMENT

CITY OF MELBOURNE

GIS ID: 13258

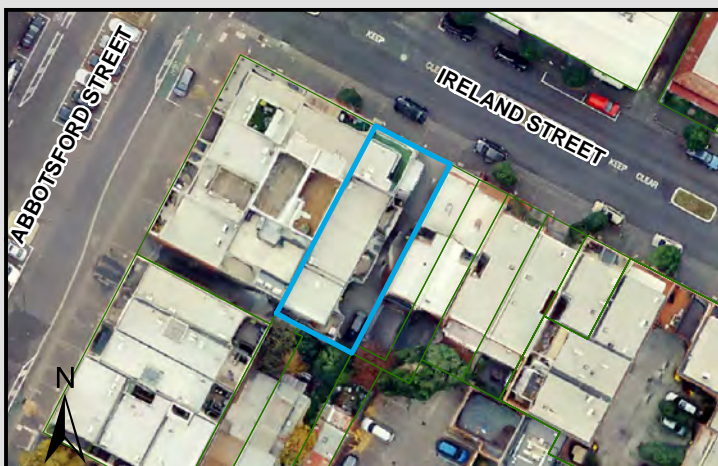
COPYRIGHT
Aerial Imagery copyright
City of Melbourne

0 1.5 3 6 9 12 15 metres
SCALE (at A4) (BUILDING MAP) 1:300
DATUM GDA 94, PROJECTION MGA Zone 55
PROJECT: 18113718
DATE: 27 FEB 2019
DRAWN: TPC
CHECKED: IMK



CoM Property ID: 517178

53-55 Ireland Street WEST MELBOURNE VIC 3003



LEGEND

 Parcel Boundary



Action Plan

EAO Recommendation

Do Not Apply EAO

EAO Comment

Site has not identified as being potentially contaminated in accordance with the Potentially Contaminated Land General Practice Note (DSE, 2005)

Site Use Summary

Current Land Use
Residential

Historic Land Use
Residential

Key Information Supporting EAO Decision

Research indicates this site has currently and previously been used for residential purposes.

Additional Considerations

Resources used to make decision



Resources used to make decision

West Melbourne Heritage Review Appendix 2 (May 2016), Site inspection, Historical aerial photographs (1968/9 & 1987)

WEST MELBOURNE EAO - AMENDMENT C309 -
WEST MELBOURNE STRUCTURE PLAN:
PRELIMINARY LAND CONTAMINATION ASSESSMENT

CITY OF MELBOURNE

GIS ID: 1627

COPYRIGHT

Aerial Imagery copyright
City of Melbourne

0 5 10 20 30 40 50 metres

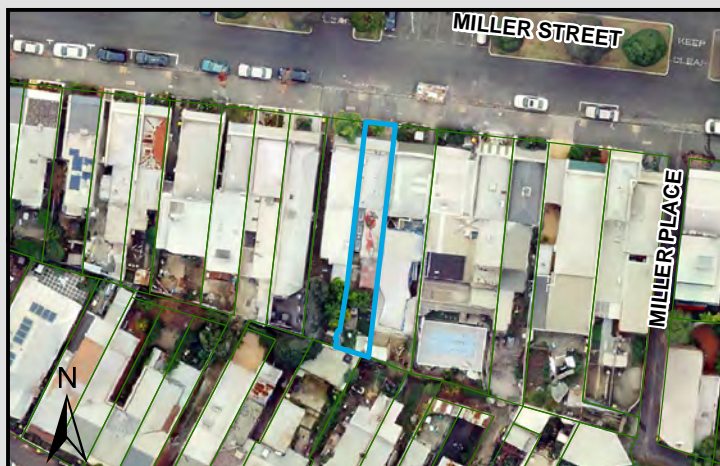
SCALE (at A4) (BUILDING MAP) 1:1,000
DATUM GDA 94, PROJECTION MGA Zone 55

PROJECT: 18113718
DATE: 27 FEB 2019
DRAWN: TPC
CHECKED: IMK



CoM Property ID: 523499

45 Miller Street WEST MELBOURNE VIC 3003



LEGEND

 Parcel Boundary

Action Plan

EAO Recommendation

Do Not Apply EAO

EAO Comment

Site has not identified as being potentially contaminated in accordance with the Potentially Contaminated Land General Practice Note (DSE, 2005)

Site Use Summary

Current Land Use
Residential

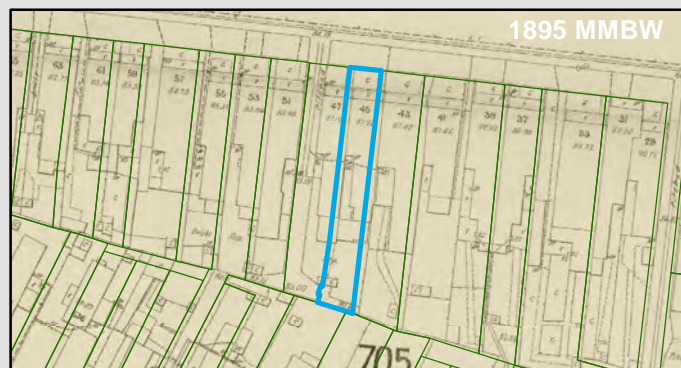
Historic Land Use
Residential

Key Information Supporting EAO Decision

Research indicates this site has currently and previously been used for residential purposes.

Additional Considerations

Resources used to make decision



Resources used to make decision

Site inspection, Historical aerial photographs (1968/9 & 1987)

WEST MELBOURNE EAO - AMENDMENT C309 -
WEST MELBOURNE STRUCTURE PLAN:
PRELIMINARY LAND CONTAMINATION ASSESSMENT

CITY OF MELBOURNE

GIS ID: 9707

COPYRIGHT

Aerial Imagery copyright
City of Melbourne

0 5 10 20 30 40 50 metres

SCALE (at A4) (BUILDING MAP) 1:1,100
DATUM GDA 94, PROJECTION MGA Zone 55

PROJECT: 18113718
DATE: 27 FEB 2019
DRAWN: TPC
CHECKED: IMK



Information contained on this drawing is the copyright of Golder Associates Pty. Ltd. Unauthorised use or reproduction of this plan either wholly or in part without written permission infringes copyright. © Golder Associates Pty. Ltd.

CoM Property ID: 523500

47 Miller Street WEST MELBOURNE VIC 3003



LEGEND

 Parcel Boundary

Action Plan

EAO Recommendation

Do Not Apply EAO

EAO Comment

Site has not identified as being potentially contaminated in accordance with the Potentially Contaminated Land General Practice Note (DSE, 2005)

Site Use Summary

Current Land Use
Residential

Historic Land Use
Residential

Key Information Supporting EAO Decision

Research indicates this site has currently and previously been used for residential purposes.

Additional Considerations

Resources used to make decision



Resources used to make decision

Site inspection, Historical aerial photographs (1968/9 & 1987)

WEST MELBOURNE EAO - AMENDMENT C309 -
WEST MELBOURNE STRUCTURE PLAN:
PRELIMINARY LAND CONTAMINATION ASSESSMENT

CITY OF MELBOURNE

GIS ID: 9706

COPYRIGHT

Aerial Imagery copyright
City of Melbourne

0 5 10 20 30 40 50 metres

SCALE (at A4) (BUILDING MAP) 1:1,100
DATUM GDA 94, PROJECTION MGA Zone 55

PROJECT: 18113718
DATE: 27 FEB 2019
DRAWN: TPC
CHECKED: IMK



Information contained on this drawing is the copyright of Golder Associates Pty. Ltd. Unauthorised use or reproduction of this plan either wholly or in part without written permission infringes copyright. © Golder Associates Pty. Ltd.

CoM Property ID: 523526

92 Miller Street WEST MELBOURNE VIC 3003



LEGEND

 Parcel Boundary

Action Plan

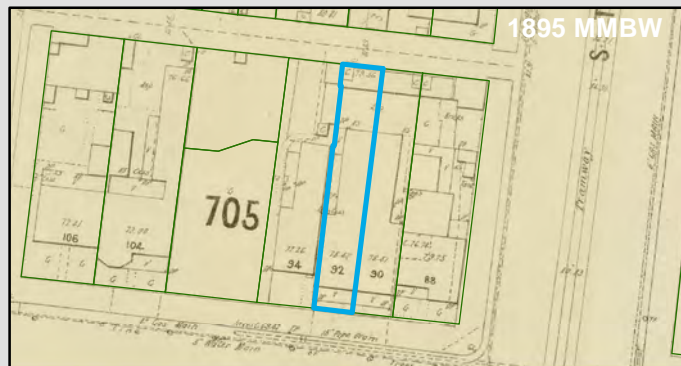
EAO Recommendation

Do Not Apply EAO

EAO Comment

Site has not identified as being potentially contaminated in accordance with the Potentially Contaminated Land General Practice Note (DSE, 2005)

Resources used to make decision



Site Use Summary

Current Land Use
Residential

Historic Land Use
Residential

Key Information Supporting EAO Decision

Research indicates this site has currently and previously been used for residential purposes.

Additional Considerations

Resources used to make decision

Site inspection, Historical aerial photographs (1968/9 & 1987)

WEST MELBOURNE EAO - AMENDMENT C309 -
WEST MELBOURNE STRUCTURE PLAN:
PRELIMINARY LAND CONTAMINATION ASSESSMENT

CITY OF MELBOURNE

GIS ID: 8795

COPYRIGHT

Aerial Imagery copyright
City of Melbourne

0 5 10 20 30 40 50 metres

SCALE (at A4) (BUILDING MAP) 1:1,100
DATUM GDA 94, PROJECTION MGA Zone 55

PROJECT: 18113718
DATE: 27 FEB 2019
DRAWN: TPC
CHECKED: IMK





LEGEND

 Parcel Boundary

Action Plan

EAO Recommendation

Do Not Apply EAO

EAO Comment

Site has not identified as being potentially contaminated in accordance with the Potentially Contaminated Land General Practice Note (DSE, 2005)

Resources used to make decision



1987 Imagery

Site Use Summary

Current Land Use
Residential**Historic Land Use**
Residential

Key Information Supporting EAO Decision

Research indicates this site has currently and previously been used for residential purposes.



1895 MMBW

Additional Considerations

Resources used to make decision

Site inspection, Historical aerial photographs (1968/9 & 1987)

WEST MELBOURNE EAO - AMENDMENT C309 -
WEST MELBOURNE STRUCTURE PLAN:
PRELIMINARY LAND CONTAMINATION ASSESSMENT

CITY OF MELBOURNE

GIS ID: 8796

COPYRIGHT

Aerial Imagery copyright
City of Melbourne

0 5 10 20 30 40 50 metres

SCALE (at A4) (BUILDING MAP) 1:1,100
DATUM GDA 94, PROJECTION MGA Zone 55

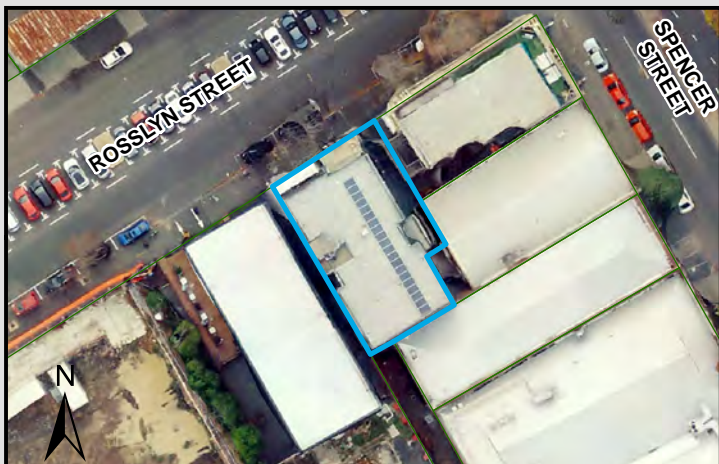
PROJECT: 18113718
DATE: 27 FEB 2019
DRAWN: TPC
CHECKED: IMK



Information contained on this drawing is the copyright of Golder Associates Pty. Ltd. Unauthorised use or reproduction of this plan either wholly or in part without written permission infringes copyright. © Golder Associates Pty. Ltd.

CoM Property ID: 528898

171-175 Rosslyn Street WEST MELBOURNE VIC 3003



LEGEND

 Parcel Boundary



Action Plan

EAO Recommendation

Do Not Apply EAO

EAO Comment

Site has not identified as being potentially contaminated in accordance with the Potentially Contaminated Land General Practice Note (DSE, 2005)

Site Use Summary

Current Land Use
Residential

Historic Land Use
Residential

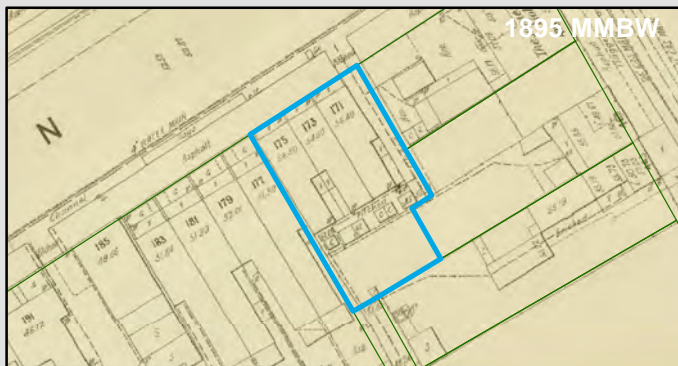
Key Information Supporting EAO Decision

Research indicates this site has currently and previously been used for residential purposes.

Additional Considerations

MMBW plans indicate residential type buildings across the block. Vacant block in 1969 aerial. Current building constructed in mid 2015.

Resources used to make decision



Resources used to make decision

Site Inspection,
MMBW Maps (1895),
Historical aerial photographs

WEST MELBOURNE EAO - AMENDMENT C309 -
WEST MELBOURNE STRUCTURE PLAN:
PRELIMINARY LAND CONTAMINATION ASSESSMENT

CITY OF MELBOURNE

GIS ID: 13805

COPYRIGHT

Aerial Imagery copyright
City of Melbourne

0 5 10 20 30 40 50 metres

SCALE (at A4) (BUILDING MAP) 1:1,000
DATUM GDA 94, PROJECTION MGA Zone 55

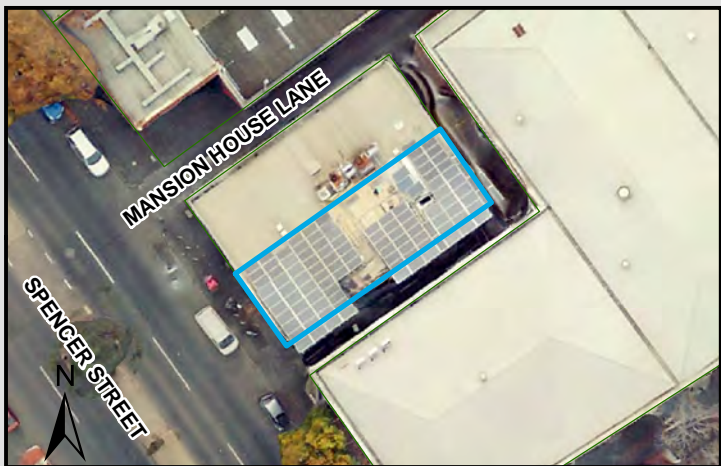
PROJECT: 18113718
DATE: 27 FEB 2019
DRAWN: TPC
CHECKED: IMK



Information contained on this drawing is the copyright of Golder Associates Pty. Ltd. Unauthorised use or reproduction of this plan either wholly or in part without written permission infringes copyright. © Golder Associates Pty. Ltd.

CoM Property ID: 530925

Suite 1-2 490 Spencer Street WEST MELBOURNE VIC 3003



LEGEND

 Parcel Boundary

Action Plan

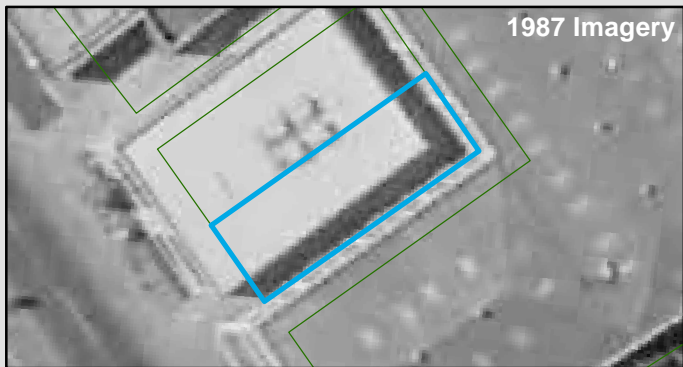
EAO Recommendation

Do Not Apply EAO

EAO Comment

Site has not identified as being potentially contaminated in accordance with the Potentially Contaminated Land General Practice Note (DSE, 2005)

Resources used to make decision



Site Use Summary

Current Land Use
Commercial

Historic Land Use
Commercial

Key Information Supporting EAO Decision

No current or previous potentially contaminating land uses identified on site.

Additional Considerations

Resources used to make decision

West Melbourne Heritage Review Appendix 2 (May 2016), Site inspection, Historical aerial photographs (1968/9 & 1987)

WEST MELBOURNE EAO - AMENDMENT C309 -
WEST MELBOURNE STRUCTURE PLAN:
PRELIMINARY LAND CONTAMINATION ASSESSMENT

CITY OF MELBOURNE

GIS ID: 7757

COPYRIGHT

Aerial Imagery copyright
City of Melbourne

0 3.5 7 14 21 28 35 metres

SCALE (at A4) (BUILDING MAP) 1:700
DATUM GDA 94, PROJECTION MGA Zone 55

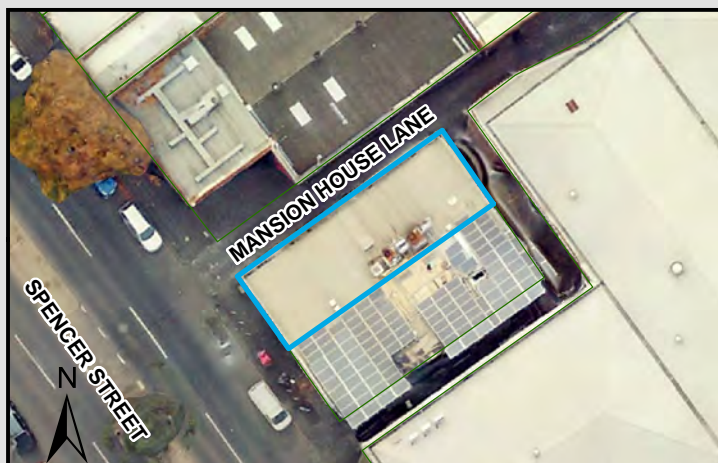
PROJECT: 18113718
DATE: 27 FEB 2019
DRAWN: TPC
CHECKED: IMK



GOLDER

CoM Property ID: 530926

Suite 3-4 490 Spencer Street WEST MELBOURNE VIC 3003



LEGEND

 Parcel Boundary

Action Plan

EAO Recommendation

Do Not Apply EAO

EAO Comment

Site has not identified as being potentially contaminated in accordance with the Potentially Contaminated Land General Practice Note (DSE, 2005)

Site Use Summary

Current Land Use
Commercial

Historic Land Use
Commercial

Key Information Supporting EAO Decision

No current or previous potentially contaminating land uses identified on site.

Additional Considerations

Resources used to make decision



Resources used to make decision

West Melbourne Heritage Review Appendix 2 (May 2016), Site inspection, Historical aerial photographs (1968/9 & 1987)

WEST MELBOURNE EAO - AMENDMENT C309 -
WEST MELBOURNE STRUCTURE PLAN:
PRELIMINARY LAND CONTAMINATION ASSESSMENT

CITY OF MELBOURNE

GIS ID: 7045

COPYRIGHT

Aerial Imagery copyright
City of Melbourne

0 3.5 7 14 21 28 35 metres

SCALE (at A4) (BUILDING MAP) 1:700
DATUM GDA 94, PROJECTION MGA Zone 55

PROJECT: 18113718
DATE: 27 FEB 2019
DRAWN: TPC
CHECKED: IMK



Information contained on this drawing is the copyright of Golder Associates Pty. Ltd. Unauthorised use or reproduction of this plan either wholly or in part without written permission infringes copyright. © Golder Associates Pty. Ltd.

CoM Property ID: 535400

345 William Street WEST MELBOURNE VIC 3003



LEGEND

 Parcel Boundary

Action Plan

EAO Recommendation

Do Not Apply EAO

EAO Comment

Site has not identified as being potentially contaminated in accordance with the Potentially Contaminated Land General Practice Note (DSE, 2005)

Site Use Summary

Current Land Use
Residential

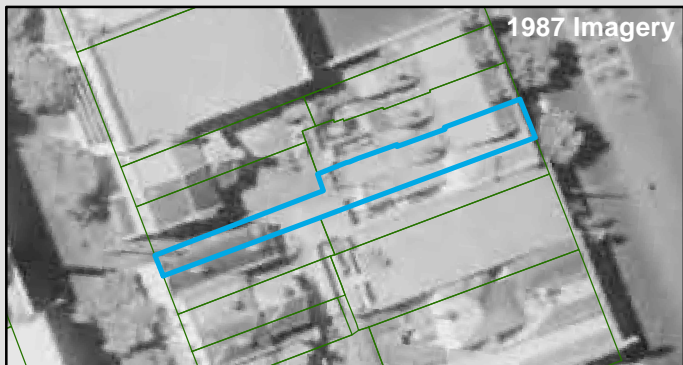
Historic Land Use
Residential

Key Information Supporting EAO Decision

Research indicates this site has currently and previously been used for residential purposes.

Additional Considerations

Resources used to make decision



Resources used to make decision

Site inspection, Historical aerial photographs (1968/9 & 1987)

WEST MELBOURNE EAO - AMENDMENT C309 -
WEST MELBOURNE STRUCTURE PLAN:
PRELIMINARY LAND CONTAMINATION ASSESSMENT

CITY OF MELBOURNE

GIS ID: 8803

COPYRIGHT

Aerial Imagery copyright
City of Melbourne

0 5 10 20 30 40 50 metres

SCALE (at A4) (BUILDING MAP) 1:1,000
DATUM GDA 94, PROJECTION MGA Zone 55

PROJECT: 18113718
DATE: 27 FEB 2019
DRAWN: TPC
CHECKED: IMK



Information contained on this drawing is the copyright of Golder Associates Pty. Ltd. Unauthorised use or reproduction of this plan either wholly or in part without written permission infringes copyright. © Golder Associates Pty. Ltd.

CoM Property ID: 535401

347 William Street WEST MELBOURNE VIC 3003



LEGEND

 Parcel Boundary



Action Plan

EAO Recommendation

Do Not Apply EAO

EAO Comment

Site has not identified as being potentially contaminated in accordance with the Potentially Contaminated Land General Practice Note (DSE, 2005)

Site Use Summary

Current Land Use
Residential

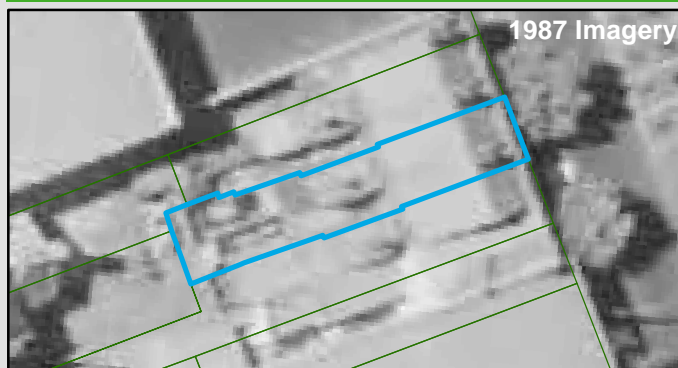
Historic Land Use
Residential

Key Information Supporting EAO Decision

Research indicates this site has currently and previously been used for residential purposes.

Additional Considerations

Resources used to make decision



Resources used to make decision

Site inspection, Historical aerial photographs (1968/9 & 1987)

WEST MELBOURNE EAO - AMENDMENT C309 -
WEST MELBOURNE STRUCTURE PLAN:
PRELIMINARY LAND CONTAMINATION ASSESSMENT

CITY OF MELBOURNE

GIS ID: 8802

COPYRIGHT

Aerial Imagery copyright
City of Melbourne

0 3 6 12 18 24 30 metres

SCALE (at A4) (BUILDING MAP) 1:600
DATUM GDA 94, PROJECTION MGA Zone 55

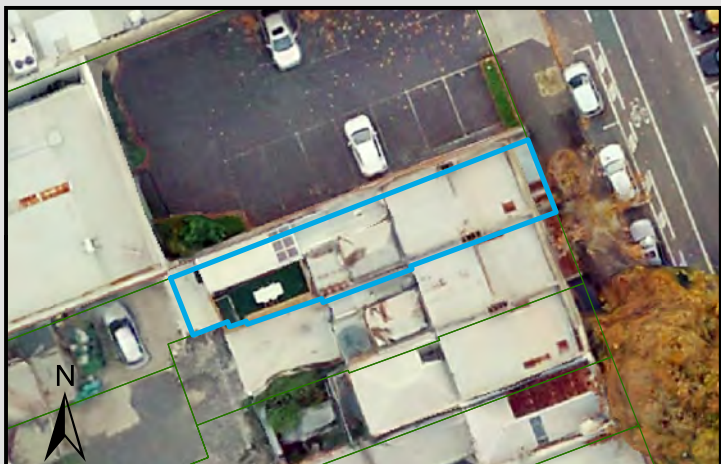
PROJECT: 18113718
DATE: 27 FEB 2019
DRAWN: TPC
CHECKED: IMK



Information contained on this drawing is the copyright of Golder Associates Pty. Ltd. Unauthorised use or reproduction of this plan either wholly or in part without written permission infringes copyright. © Golder Associates Pty. Ltd.

CoM Property ID: 535402

349 William Street WEST MELBOURNE VIC 3003



LEGEND

 Parcel Boundary



Action Plan

EAO Recommendation

Do Not Apply EAO

EAO Comment

Site has not identified as being potentially contaminated in accordance with the Potentially Contaminated Land General Practice Note (DSE, 2005)

Site Use Summary

Current Land Use
Residential

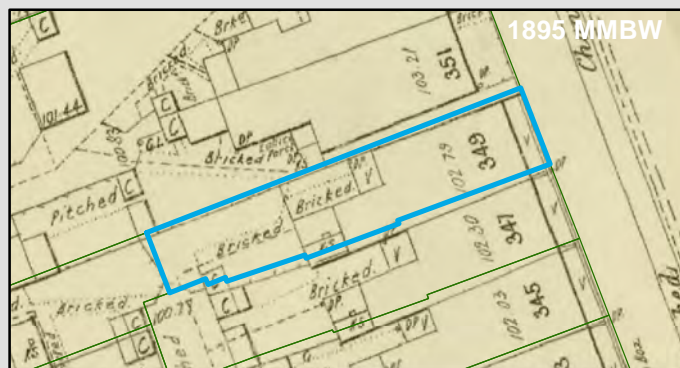
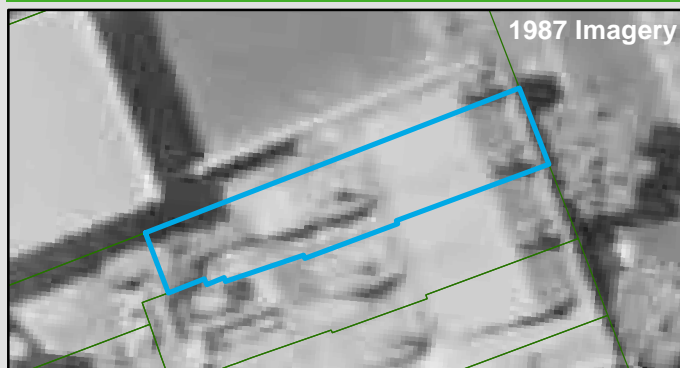
Historic Land Use
Residential

Key Information Supporting EAO Decision

Research indicates this site has currently and previously been used for residential purposes.

Additional Considerations

Resources used to make decision



Resources used to make decision

Site inspection, Historical aerial photographs (1968/9 & 1987)

WEST MELBOURNE EAO - AMENDMENT C309 -
WEST MELBOURNE STRUCTURE PLAN:
PRELIMINARY LAND CONTAMINATION ASSESSMENT

CITY OF MELBOURNE

GIS ID: 8801

COPYRIGHT

Aerial Imagery copyright
City of Melbourne

0 2.5 5 10 15 20 25 metres

SCALE (at A4) (BUILDING MAP) 1:500
DATUM GDA 94, PROJECTION MGA Zone 55

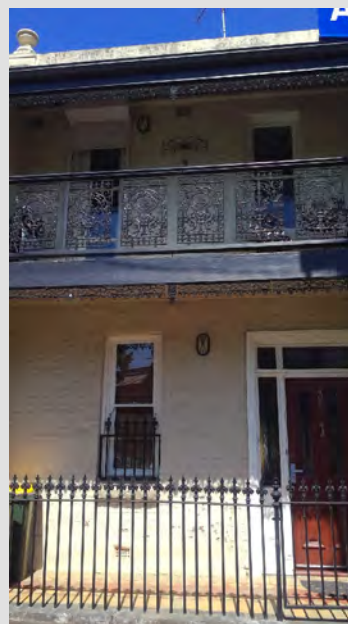
PROJECT: 18113718
DATE: 27 FEB 2019
DRAWN: TPC
CHECKED: IMK



Information contained on this drawing is the copyright of Golder Associates Pty. Ltd. Unauthorised use or reproduction of this plan either wholly or in part without written permission infringes copyright. © Golder Associates Pty. Ltd.

CoM Property ID: 558128

36 Abbotsford Street WEST MELBOURNE VIC 3003



LEGEND

 Parcel Boundary

Action Plan

EAO Recommendation

Do Not Apply EAO

EAO Comment

Site has not identified as being potentially contaminated in accordance with the Potentially Contaminated Land General Practice Note (DSE, 2005)

Site Use Summary

Current Land Use
Residential

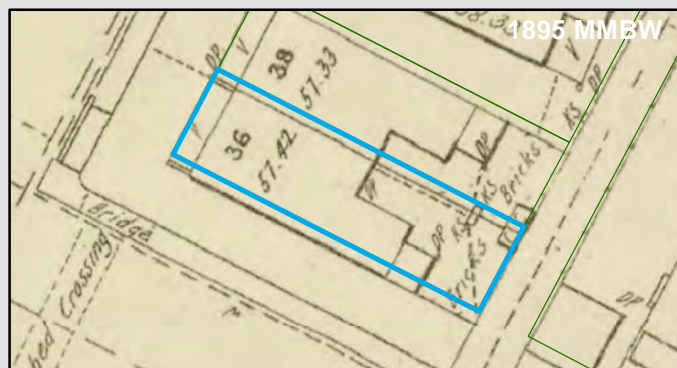
Historic Land Use
Residential

Key Information Supporting EAO Decision

Research indicates this site has currently and previously been used for residential purposes.

Additional Considerations

Resources used to make decision



Resources used to make decision

Site inspection, Historical aerial photographs (1968/9 & 1987)

WEST MELBOURNE EAO - AMENDMENT C309 -
WEST MELBOURNE STRUCTURE PLAN:
PRELIMINARY LAND CONTAMINATION ASSESSMENT

CITY OF MELBOURNE

GIS ID: 7046

COPYRIGHT

Aerial Imagery copyright
City of Melbourne

0 2 4 8 12 16 20 metres

SCALE (at A4) (BUILDING MAP) 1:400
DATUM GDA 94, PROJECTION MGA Zone 55

PROJECT: 18113718
DATE: 27 FEB 2019
DRAWN: TPC
CHECKED: IMK



Information contained on this drawing is the copyright of Golder Associates Pty. Ltd. Unauthorised use or reproduction of this plan either wholly or in part without written permission infringes copyright. © Golder Associates Pty. Ltd.

CoM Property ID: 558129

38 Abbotsford Street WEST MELBOURNE VIC 3003



LEGEND

 Parcel Boundary

Action Plan

EAO Recommendation

Do Not Apply EAO

EAO Comment

Site has not identified as being potentially contaminated in accordance with the Potentially Contaminated Land General Practice Note (DSE, 2005)

Site Use Summary

Current Land Use
Residential

Historic Land Use
Residential

Key Information Supporting EAO Decision

Research indicates this site has currently and previously been used for residential purposes.

Additional Considerations

Resources used to make decision



Resources used to make decision

Site inspection, Historical aerial photographs (1968/9 & 1987)

WEST MELBOURNE EAO - AMENDMENT C309 -
WEST MELBOURNE STRUCTURE PLAN:
PRELIMINARY LAND CONTAMINATION ASSESSMENT

CITY OF MELBOURNE

GIS ID: 8708

COPYRIGHT

Aerial Imagery copyright
City of Melbourne

0 2 4 8 12 16 20 metres

SCALE (at A4) (BUILDING MAP) 1:400
DATUM GDA 94, PROJECTION MGA Zone 55

PROJECT: 18113718
DATE: 27 FEB 2019
DRAWN: TPC
CHECKED: IMK



Information contained on this drawing is the copyright of Golder Associates Pty. Ltd. Unauthorised use or reproduction of this plan either wholly or in part without written permission infringes copyright. © Golder Associates Pty. Ltd.

CoM Property ID: 558814

49-51 Rosslyn Street WEST MELBOURNE VIC 3003



LEGEND

 Parcel Boundary

Action Plan

EAO Recommendation

Do Not Apply EAO

EAO Comment

Site has not identified as being potentially contaminated in accordance with the Potentially Contaminated Land General Practice Note (DSE, 2005)

Site Use Summary

Current Land Use
Commercial

Historic Land Use
Residential

Key Information Supporting EAO Decision

No current or previous potentially contaminating land uses identified on site.

Additional Considerations

Resources used to make decision



Resources used to make decision

West Melbourne Heritage Review Appendix 2 (May 2016), Site inspection, Historical aerial photographs (1968/9 & 1987)

WEST MELBOURNE EAO - AMENDMENT C309 -
WEST MELBOURNE STRUCTURE PLAN:
PRELIMINARY LAND CONTAMINATION ASSESSMENT

CITY OF MELBOURNE

GIS ID: 7051

COPYRIGHT

Aerial Imagery copyright
City of Melbourne

0 4.5 9 18 27 36 45 metres

SCALE (at A4) (BUILDING MAP) 1:900
DATUM GDA 94, PROJECTION MGA Zone 55

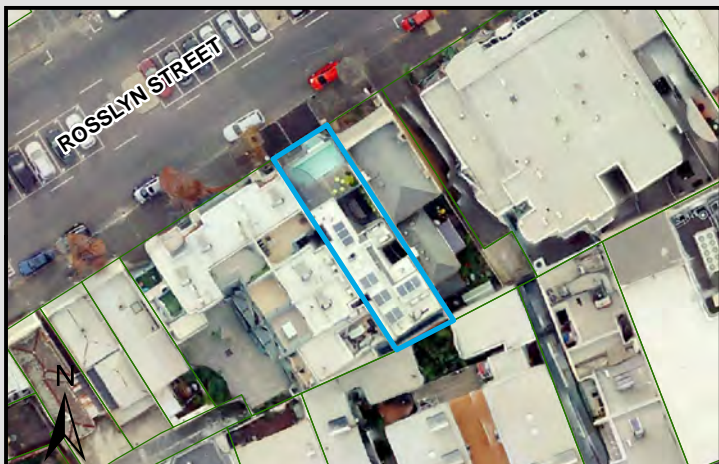
PROJECT: 18113718
DATE: 27 FEB 2019
DRAWN: TPC
CHECKED: IMK



Information contained on this drawing is the copyright of Golder Associates Pty. Ltd. Unauthorised use or reproduction of this plan either wholly or in part without written permission infringes copyright. © Golder Associates Pty. Ltd.

CoM Property ID: 558815

53-55 Rosslyn Street WEST MELBOURNE VIC 3003



LEGEND

 Parcel Boundary

Action Plan

EAO Recommendation

Do Not Apply EAO

EAO Comment

Site has not identified as being potentially contaminated in accordance with the Potentially Contaminated Land General Practice Note (DSE, 2005)

Site Use Summary

Current Land Use
Residential

Historic Land Use
Residential

Key Information Supporting EAO Decision

Research indicates this site has currently and previously been used for residential purposes.

Additional Considerations

Resources used to make decision



Resources used to make decision

West Melbourne Heritage Review Appendix 2 (May 2016), Site inspection, Historical aerial photographs (1968/9 & 1987)

WEST MELBOURNE EAO - AMENDMENT C309 -
WEST MELBOURNE STRUCTURE PLAN:
PRELIMINARY LAND CONTAMINATION ASSESSMENT

CITY OF MELBOURNE

GIS ID: 7050

COPYRIGHT

Aerial Imagery copyright
City of Melbourne

0 4.5 9 18 27 36 45 metres

SCALE (at A4) (BUILDING MAP) 1:900
DATUM GDA 94, PROJECTION MGA Zone 55

PROJECT: 18113718
DATE: 27 FEB 2019
DRAWN: TPC
CHECKED: IMK



CoM Property ID: 558820

54-56 Walsh Street WEST MELBOURNE VIC 3003



LEGEND

 Parcel Boundary



Action Plan

EAO Recommendation

Do Not Apply EAO

EAO Comment

Site has not identified as being potentially contaminated in accordance with the Potentially Contaminated Land General Practice Note (DSE, 2005)

Resources used to make decision



Site Use Summary

Current Land Use
Residential

Historic Land Use
Residential



Key Information Supporting EAO Decision

Research indicates this site has currently and previously been used for residential purposes.

Additional Considerations

Resources used to make decision

Site inspection, Historical aerial photographs (1968/9 & 1987)

WEST MELBOURNE EAO - AMENDMENT C309 -
WEST MELBOURNE STRUCTURE PLAN:
PRELIMINARY LAND CONTAMINATION ASSESSMENT

CITY OF MELBOURNE

GIS ID: 7053

COPYRIGHT

Aerial Imagery copyright
City of Melbourne

0 4.5 9 18 27 36 45 metres

SCALE (at A4) (BUILDING MAP) 1:900
DATUM GDA 94, PROJECTION MGA Zone 55


PROJECT: 18113718
DATE: 27 FEB 2019
DRAWN: TPC
CHECKED: IMK



Information contained on this drawing is the copyright of Golder Associates Pty. Ltd. Unauthorised use or reproduction of this plan either wholly or in part without written permission infringes copyright. © Golder Associates Pty. Ltd.



LEGEND

 Parcel Boundary



Action Plan

EAO Recommendation

Do Not Apply EAO

EAO Comment

Site has not identified as being potentially contaminated in accordance with the Potentially Contaminated Land General Practice Note (DSE, 2005)

Site Use Summary

Current Land Use
Commercial

Historic Land Use
Commercial

Key Information Supporting EAO Decision

No current or previous potentially contaminating land uses identified on site.

Additional Considerations

Resources used to make decision



Resources used to make decision

West Melbourne Heritage Review Appendix 2 (May 2016), Site inspection, Historical aerial photographs (1968/9 & 1987)

WEST MELBOURNE EAO - AMENDMENT C309 -
WEST MELBOURNE STRUCTURE PLAN:
PRELIMINARY LAND CONTAMINATION ASSESSMENT

CITY OF MELBOURNE

GIS ID: 8793

COPYRIGHT

Aerial Imagery copyright
City of Melbourne

0 3 6 12 18 24 30 metres

SCALE (at A4) (BUILDING MAP) 1:600
DATUM GDA 94, PROJECTION MGA Zone 55

PROJECT: 18113718
DATE: 27 FEB 2019
DRAWN: TPC
CHECKED: IMK



Information contained on this drawing is the copyright of Golder Associates Pty. Ltd. Unauthorised use or reproduction of this plan either wholly or in part without written permission infringes copyright. © Golder Associates Pty. Ltd.

CoM Property ID: 573407

87 Capel Street WEST MELBOURNE VIC 3003



LEGEND

 Parcel Boundary



Action Plan

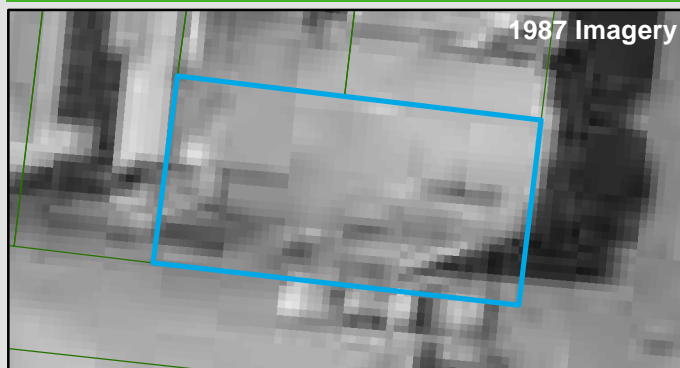
EAO Recommendation

Do Not Apply EAO

EAO Comment

Site has not identified as being potentially contaminated in accordance with the Potentially Contaminated Land General Practice Note (DSE, 2005)

Resources used to make decision



1987 Imagery

Site Use Summary

Current Land Use
Residential

Historic Land Use
Residential



1895 MMBW

Key Information Supporting EAO Decision

Research indicates this site has currently and previously been used for residential purposes.

Additional Considerations

Resources used to make decision

Site inspection, Historical aerial photographs (1968/9 & 1987)

WEST MELBOURNE EAO - AMENDMENT C309 -
WEST MELBOURNE STRUCTURE PLAN:
PRELIMINARY LAND CONTAMINATION ASSESSMENT

CITY OF MELBOURNE

GIS ID: 8794

COPYRIGHT

Aerial Imagery copyright
City of Melbourne

0 1.5 3 6 9 12 15 metres

SCALE (at A4) (BUILDING MAP) 1:300
DATUM GDA 94, PROJECTION MGA Zone 55

PROJECT: 18113718
DATE: 27 FEB 2019
DRAWN: TPC
CHECKED: IMK



Information contained on this drawing is the copyright of Golder Associates Pty. Ltd. Unauthorised use or reproduction of this plan either wholly or in part without written permission infringes copyright. © Golder Associates Pty. Ltd.

CoM Property ID: 573781

29 Ireland Street WEST MELBOURNE VIC 3003



LEGEND

 Parcel Boundary



Action Plan

EAO Recommendation

Do Not Apply EAO

EAO Comment

Site has not identified as being potentially contaminated in accordance with the Potentially Contaminated Land General Practice Note (DSE, 2005)

Site Use Summary

Current Land Use
Residential

Historic Land Use
Residential

Key Information Supporting EAO Decision

Research indicates this site has currently and previously been used for residential purposes.

Additional Considerations

Resources used to make decision



Resources used to make decision

Site inspection, Historical aerial photographs (1968/9 & 1987)

WEST MELBOURNE EAO - AMENDMENT C309 -
WEST MELBOURNE STRUCTURE PLAN:
PRELIMINARY LAND CONTAMINATION ASSESSMENT

CITY OF MELBOURNE

GIS ID: 9708

COPYRIGHT

Aerial Imagery copyright
City of Melbourne

0 3 6 12 18 24 30 metres

SCALE (at A4) (BUILDING MAP) 1:600
DATUM GDA 94, PROJECTION MGA Zone 55

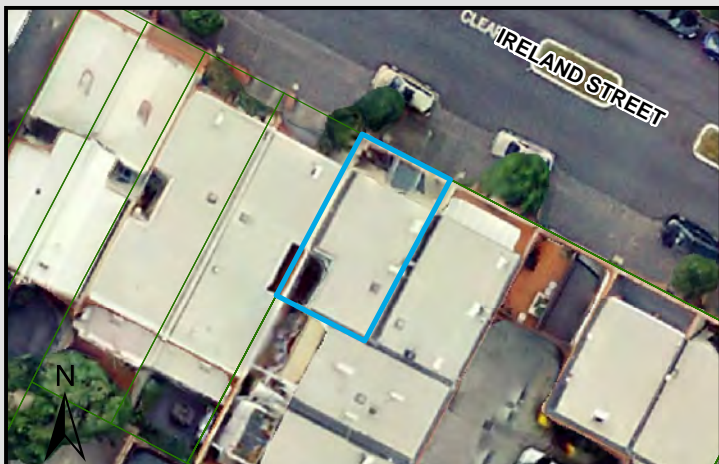
PROJECT: 18113718
DATE: 27 FEB 2019
DRAWN: TPC
CHECKED: IMK



Information contained on this drawing is the copyright of Golder Associates Pty. Ltd. Unauthorised use or reproduction of this plan either wholly or in part without written permission infringes copyright. © Golder Associates Pty. Ltd.

CoM Property ID: 573785

39 Ireland Street WEST MELBOURNE VIC 3003



LEGEND

 Parcel Boundary

Action Plan

EAO Recommendation

Do Not Apply EAO

EAO Comment

Site has not identified as being potentially contaminated in accordance with the Potentially Contaminated Land General Practice Note (DSE, 2005)

Resources used to make decision



1987 Imagery

Site Use Summary

Current Land Use
Residential

Historic Land Use
Residential



1895 MMBW

Key Information Supporting EAO Decision

Research indicates this site has currently and previously been used for residential purposes.

Additional Considerations

Resources used to make decision

Site inspection, Historical aerial photographs (1968/9 & 1987)

WEST MELBOURNE EAO - AMENDMENT C309 -
WEST MELBOURNE STRUCTURE PLAN:
PRELIMINARY LAND CONTAMINATION ASSESSMENT

CITY OF MELBOURNE

GIS ID: 8797

COPYRIGHT

Aerial Imagery copyright
City of Melbourne

0 2.5 5 10 15 20 25 metres

SCALE (at A4) (BUILDING MAP) 1:500
DATUM GDA 94, PROJECTION MGA Zone 55

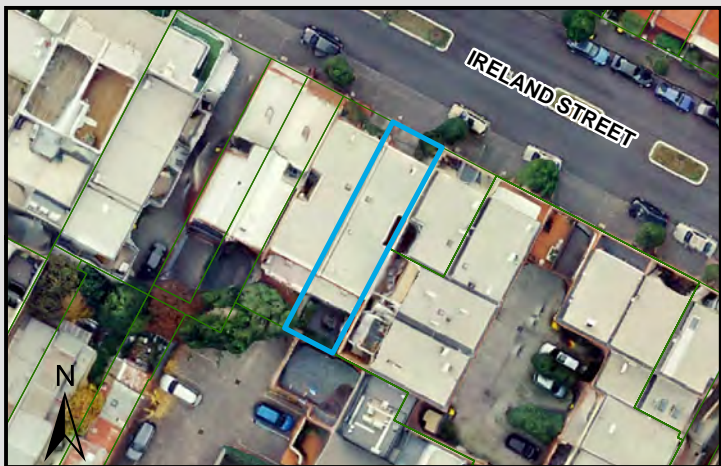
PROJECT: 18113718
DATE: 27 FEB 2019
DRAWN: TPC
CHECKED: IMK



Information contained on this drawing is the copyright of Golder Associates Pty. Ltd. Unauthorised use or reproduction of this plan either wholly or in part without written permission infringes copyright. © Golder Associates Pty. Ltd.

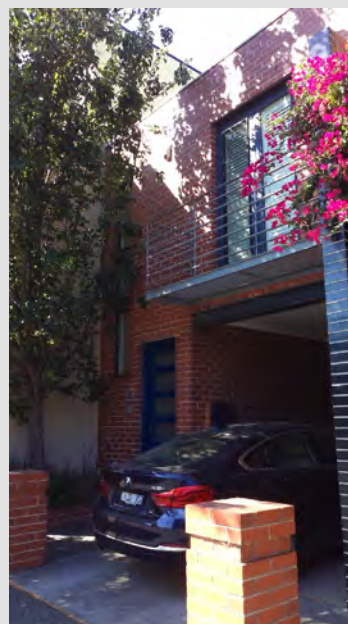
CoM Property ID: 573786

41 Ireland Street WEST MELBOURNE VIC 3003



LEGEND

 Parcel Boundary



Action Plan

EAO Recommendation

Do Not Apply EAO

EAO Comment

Site has not identified as being potentially contaminated in accordance with the Potentially Contaminated Land General Practice Note (DSE, 2005)

Site Use Summary

Current Land Use
Residential

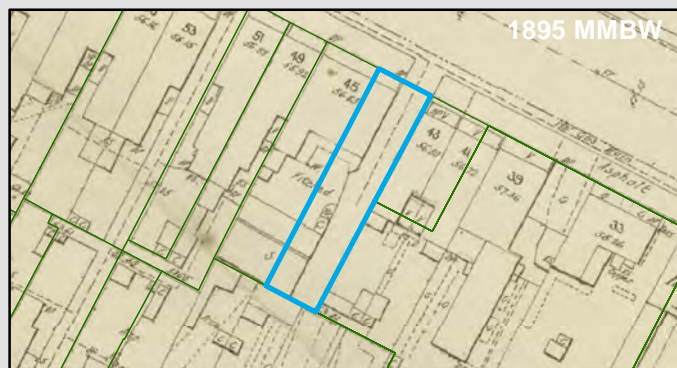
Historic Land Use
Residential

Key Information Supporting EAO Decision

Research indicates this site has currently and previously been used for residential purposes.

Additional Considerations

Resources used to make decision



Resources used to make decision

Site inspection, Historical aerial photographs (1968/9 & 1987)

WEST MELBOURNE EAO - AMENDMENT C309 -
WEST MELBOURNE STRUCTURE PLAN:
PRELIMINARY LAND CONTAMINATION ASSESSMENT

CITY OF MELBOURNE

GIS ID: 8798

COPYRIGHT

Aerial Imagery copyright
City of Melbourne

0 4 8 16 24 32 40 metres

SCALE (at A4) (BUILDING MAP) 1:800
DATUM GDA 94, PROJECTION MGA Zone 55

PROJECT: 18113718
DATE: 27 FEB 2019
DRAWN: TPC
CHECKED: IMK



CoM Property ID: 573787

43-47 Ireland Street WEST MELBOURNE VIC 3003



LEGEND

 Parcel Boundary

Action Plan

EAO Recommendation

Do Not Apply EAO

EAO Comment

Site has not identified as being potentially contaminated in accordance with the Potentially Contaminated Land General Practice Note (DSE, 2005)

Resources used to make decision



1987 Imagery



1895 MMBW

Site Use Summary

Current Land Use
Residential

Historic Land Use
Residential

Key Information Supporting EAO Decision

Research indicates this site has currently and previously been used for residential purposes.

Additional Considerations

Resources used to make decision

Site inspection, Historical aerial photographs (1968/9 & 1987)

WEST MELBOURNE EAO - AMENDMENT C309 -
WEST MELBOURNE STRUCTURE PLAN:
PRELIMINARY LAND CONTAMINATION ASSESSMENT

CITY OF MELBOURNE

GIS ID: 8799

COPYRIGHT

Aerial Imagery copyright
City of Melbourne

0 4 8 16 24 32 40 metres

SCALE (at A4) (BUILDING MAP) 1:800
DATUM GDA 94, PROJECTION MGA Zone 55

PROJECT: 18113718
DATE: 27 FEB 2019
DRAWN: TPC
CHECKED: IMK



Information contained on this drawing is the copyright of Golder Associates Pty. Ltd. Unauthorised use or reproduction of this plan either wholly or in part without written permission infringes copyright. © Golder Associates Pty. Ltd.



LEGEND

 Parcel Boundary

Action Plan

EAO Recommendation

Do Not Apply EAO

EAO Comment

Site has not identified as being potentially contaminated in accordance with the Potentially Contaminated Land General Practice Note (DSE, 2005)

Site Use Summary

Current Land Use
Residential

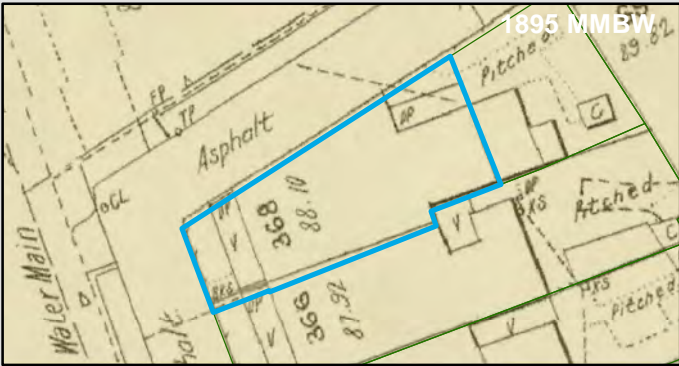
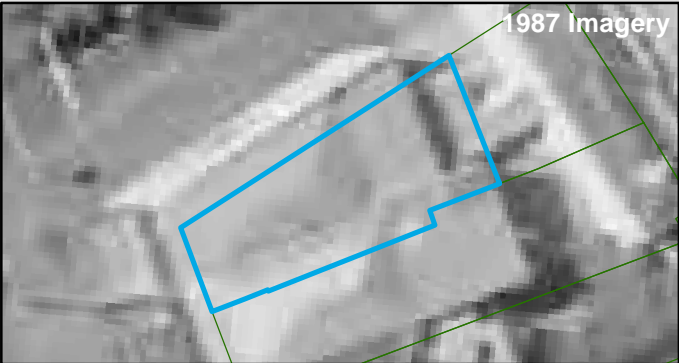
Historic Land Use
Residential

Key Information Supporting EAO Decision

Research indicates this site has currently and previously been used for residential purposes.

Additional Considerations

Resources used to make decision



Resources used to make decision

Site inspection, Historical aerial photographs (1968/9 & 1987)

WEST MELBOURNE EAO - AMENDMENT C309 -
WEST MELBOURNE STRUCTURE PLAN:
PRELIMINARY LAND CONTAMINATION ASSESSMENT

CITY OF MELBOURNE

GIS ID: 8806

COPYRIGHT

Aerial Imagery copyright
City of Melbourne

0 2 4 8 12 16 20 metres

SCALE (at A4) (BUILDING MAP) 1:400
DATUM GDA 94, PROJECTION MGA Zone 55

PROJECT: 18113718
DATE: 27 FEB 2019
DRAWN: TPC
CHECKED: IMK



Information contained on this drawing is the copyright of Golder Associates Pty. Ltd. Unauthorised use or reproduction of this plan either wholly or in part without written permission infringes copyright. © Golder Associates Pty. Ltd.

CoM Property ID: 578028

71 Rosslyn Street WEST MELBOURNE VIC 3003



LEGEND

 Parcel Boundary

Action Plan

EAO Recommendation

Do Not Apply EAO

EAO Comment

Site has not identified as being potentially contaminated in accordance with the Potentially Contaminated Land General Practice Note (DSE, 2005)

Resources used to make decision

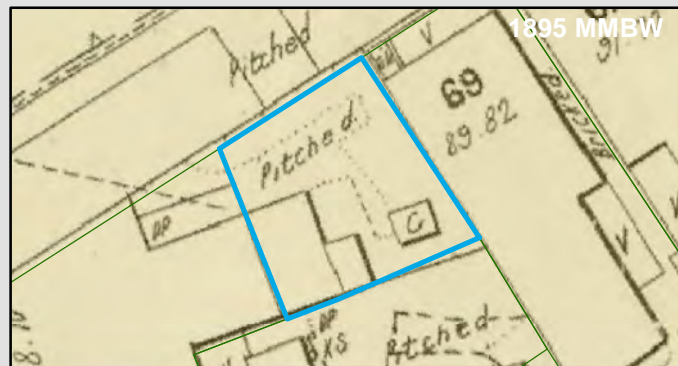


1987 Imagery

Site Use Summary

Current Land Use
Residential

Historic Land Use
Other (unsure)



1895 MMBW

Key Information Supporting EAO Decision

No current or previous potentially contaminating land uses identified on site.

Additional Considerations

Resources used to make decision

Site inspection, Historical aerial photographs (1968/9 & 1987)

WEST MELBOURNE EAO - AMENDMENT C309 -
WEST MELBOURNE STRUCTURE PLAN:
PRELIMINARY LAND CONTAMINATION ASSESSMENT

CITY OF MELBOURNE

GIS ID: 7727

COPYRIGHT

Aerial Imagery copyright
City of Melbourne

0 1.5 3 6 9 12 15 metres

SCALE (at A4) (BUILDING MAP) 1:300
DATUM GDA 94, PROJECTION MGA Zone 55

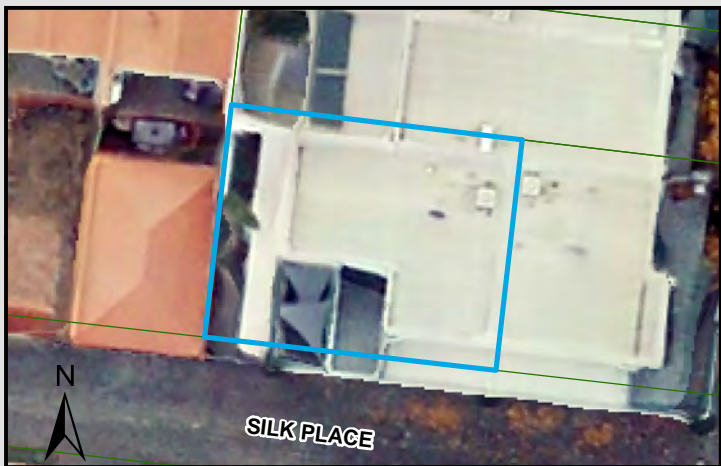
PROJECT: 18113718
DATE: 27 FEB 2019
DRAWN: TPC
CHECKED: IMK



Information contained on this drawing is the copyright of Golder Associates Pty. Ltd. Unauthorised use or reproduction of this plan either wholly or in part without written permission infringes copyright. © Golder Associates Pty. Ltd.

CoM Property ID: 579417

85 Silk Place WEST MELBOURNE VIC 3003



LEGEND

 Parcel Boundary



Action Plan

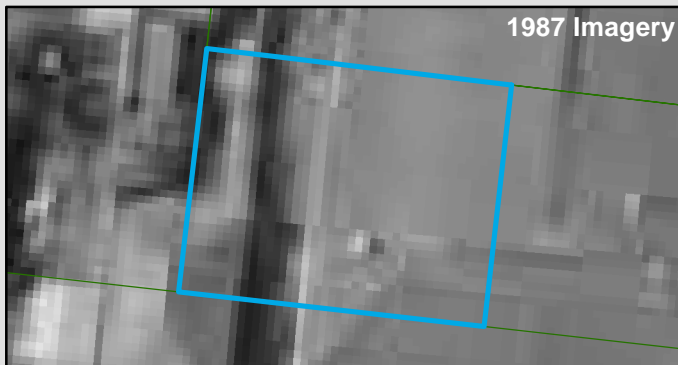
EAO Recommendation

Do Not Apply EAO

EAO Comment

Site has not identified as being potentially contaminated in accordance with the Potentially Contaminated Land General Practice Note (DSE, 2005)

Resources used to make decision



1987 Imagery

Site Use Summary

Current Land Use
Residential

Historic Land Use
Residential

Key Information Supporting EAO Decision

Research indicates this site has currently and previously been used for residential purposes.



1895 MMBW

Additional Considerations

Concrete townhouse built in 2003.

Resources used to make decision

West Melbourne Heritage Review Appendix 2 (May 2016), Site inspection, Historical aerial photographs (1968/9 & 1987)

WEST MELBOURNE EAO - AMENDMENT C309 -
WEST MELBOURNE STRUCTURE PLAN:
PRELIMINARY LAND CONTAMINATION ASSESSMENT

CITY OF MELBOURNE

GIS ID: 8788

COPYRIGHT

Aerial Imagery copyright
City of Melbourne

0 1.5 3 6 9 12 15 metres

SCALE (at A4) (BUILDING MAP) 1:300
DATUM GDA 94, PROJECTION MGA Zone 55

PROJECT: 18113718
DATE: 27 FEB 2019
DRAWN: TPC
CHECKED: IMK



Information contained on this drawing is the copyright of Golder Associates Pty. Ltd. Unauthorised use or reproduction of this plan either wholly or in part without written permission infringes copyright. © Golder Associates Pty. Ltd.

CoM Property ID: 579418

111 Abbotsford Street WEST MELBOURNE VIC 3003



LEGEND

 Parcel Boundary



Action Plan

EAO Recommendation

Do Not Apply EAO

EAO Comment

Site has not identified as being potentially contaminated in accordance with the Potentially Contaminated Land General Practice Note (DSE, 2005)

Resources used to make decision



1987 Imagery

Site Use Summary

Current Land Use
Residential

Historic Land Use
Residential



1895 MMBW

Key Information Supporting EAO Decision

Research indicates this site has currently and previously been used for residential purposes.

Additional Considerations

Concrete townhouse built in 2003.

Resources used to make decision

West Melbourne Heritage Review Appendix 2 (May 2016), Site inspection, Historical aerial photographs (1968/9 & 1987)

WEST MELBOURNE EAO - AMENDMENT C309 -
WEST MELBOURNE STRUCTURE PLAN:
PRELIMINARY LAND CONTAMINATION ASSESSMENT

CITY OF MELBOURNE

GIS ID: 8787

COPYRIGHT

Aerial Imagery copyright
City of Melbourne

0 1.5 3 6 9 12 15 metres

SCALE (at A4) (BUILDING MAP) 1:300
DATUM GDA 94, PROJECTION MGA Zone 55

PROJECT: 18113718
DATE: 27 FEB 2019
DRAWN: TPC
CHECKED: IMK



Information contained on this drawing is the copyright of Golder Associates Pty. Ltd. Unauthorised use or reproduction of this plan either wholly or in part without written permission infringes copyright. © Golder Associates Pty. Ltd.

CoM Property ID: 579419

113 Abbotsford Street WEST MELBOURNE VIC 3003



LEGEND

 Parcel Boundary



Action Plan

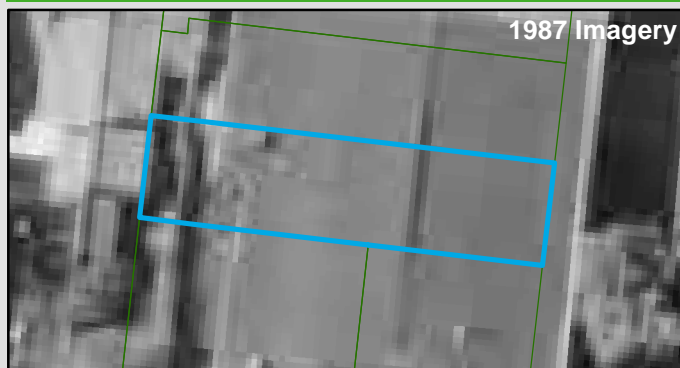
EAO Recommendation

Do Not Apply EAO

EAO Comment

Site has not identified as being potentially contaminated in accordance with the Potentially Contaminated Land General Practice Note (DSE, 2005)

Resources used to make decision



Site Use Summary

Current Land Use
Residential

Historic Land Use
Residential



Key Information Supporting EAO Decision

Research indicates this site has currently and previously been used for residential purposes.

Additional Considerations

Concrete townhouse built in 2003.

Resources used to make decision

West Melbourne Heritage Review Appendix 2 (May 2016), Site inspection, Historical aerial photographs (1968/9 & 1987)

WEST MELBOURNE EAO - AMENDMENT C309 -
WEST MELBOURNE STRUCTURE PLAN:
PRELIMINARY LAND CONTAMINATION ASSESSMENT

CITY OF MELBOURNE

GIS ID: 8786

COPYRIGHT

Aerial Imagery copyright
City of Melbourne

0 2 4 8 12 16 20 metres

SCALE (at A4) (BUILDING MAP) 1:400
DATUM GDA 94, PROJECTION MGA Zone 55

PROJECT: 18113718
DATE: 27 FEB 2019
DRAWN: TPC
CHECKED: IMK



Information contained on this drawing is the copyright of Golder Associates Pty. Ltd. Unauthorised use or reproduction of this plan either wholly or in part without written permission infringes copyright. © Golder Associates Pty. Ltd.

CoM Property ID: 579420

115 Abbotsford Street WEST MELBOURNE VIC 3003



LEGEND

 Parcel Boundary

Action Plan

EAO Recommendation

Do Not Apply EAO

EAO Comment

Site has not identified as being potentially contaminated in accordance with the Potentially Contaminated Land General Practice Note (DSE, 2005)

Site Use Summary

Current Land Use
Residential

Historic Land Use
Residential

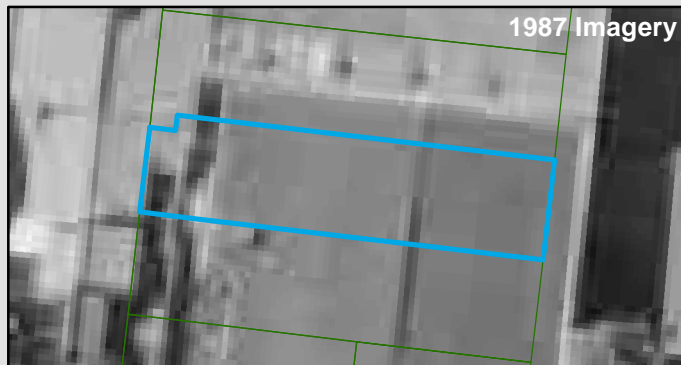
Key Information Supporting EAO Decision

Research indicates this site has currently and previously been used for residential purposes.

Additional Considerations

Concrete townhouse built in 2003.

Resources used to make decision



Resources used to make decision

West Melbourne Heritage Review Appendix 2 (May 2016), Site inspection, Historical aerial photographs (1968/9 & 1987)

WEST MELBOURNE EAO - AMENDMENT C309 -
WEST MELBOURNE STRUCTURE PLAN:
PRELIMINARY LAND CONTAMINATION ASSESSMENT

CITY OF MELBOURNE

GIS ID: 8785

COPYRIGHT

Aerial Imagery copyright
City of Melbourne

0 2 4 8 12 16 20 metres

SCALE (at A4) (BUILDING MAP) 1:400
DATUM GDA 94, PROJECTION MGA Zone 55

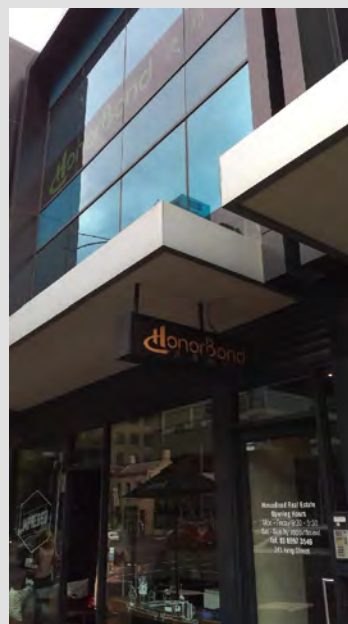
PROJECT: 18113718
DATE: 27 FEB 2019
DRAWN: TPC
CHECKED: IMK



Information contained on this drawing is the copyright of Golder Associates Pty. Ltd. Unauthorised use or reproduction of this plan either wholly or in part without written permission infringes copyright. © Golder Associates Pty. Ltd.

CoM Property ID: 598269

341 King Street WEST MELBOURNE VIC 3003



LEGEND

 Parcel Boundary

Action Plan

EAO Recommendation

Do Not Apply EAO

EAO Comment

Site has not identified as being potentially contaminated in accordance with the Potentially Contaminated Land General Practice Note (DSE, 2005)

Site Use Summary

Current Land Use
Commercial

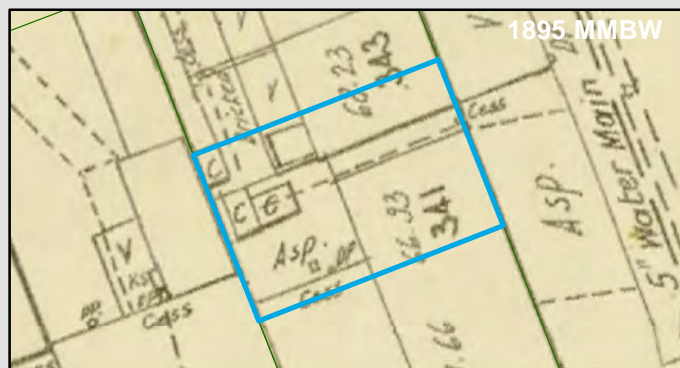
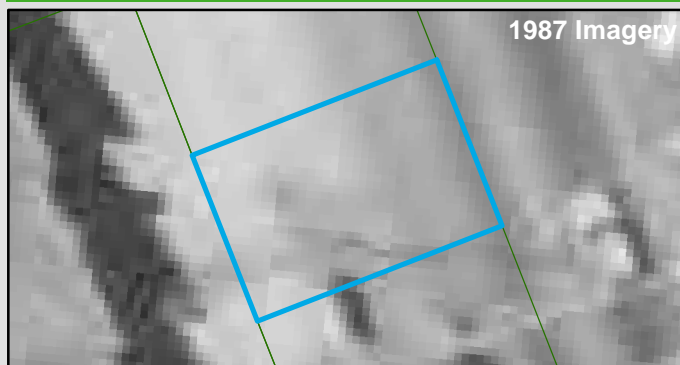
Historic Land Use
Residential

Key Information Supporting EAO Decision

No current or previous potentially contaminating land uses identified on site.

Additional Considerations

Resources used to make decision



Resources used to make decision

Mahlstedt fire insurance maps (CBD 1923-25), Site inspection, Historical aerial photographs (1968/9 & 1987)

WEST MELBOURNE EAO - AMENDMENT C309 -
WEST MELBOURNE STRUCTURE PLAN:
PRELIMINARY LAND CONTAMINATION ASSESSMENT

CITY OF MELBOURNE

GIS ID: 1795

COPYRIGHT

Aerial Imagery copyright
City of Melbourne

0 1.5 3 6 9 12 15 metres

SCALE (at A4) (BUILDING MAP) 1:300
DATUM GDA 94, PROJECTION MGA Zone 55

PROJECT: 18113718
DATE: 27 FEB 2019
DRAWN: TPC
CHECKED: IMK



Information contained on this drawing is the copyright of Golder Associates Pty. Ltd. Unauthorised use or reproduction of this plan either wholly or in part without written permission infringes copyright. © Golder Associates Pty. Ltd.

CoM Property ID: 598270

343 King Street WEST MELBOURNE VIC 3003



LEGEND

 Parcel Boundary

Action Plan

EAO Recommendation

Do Not Apply EAO

EAO Comment

Site has not identified as being potentially contaminated in accordance with the Potentially Contaminated Land General Practice Note (DSE, 2005)

Site Use Summary

Current Land Use
Commercial

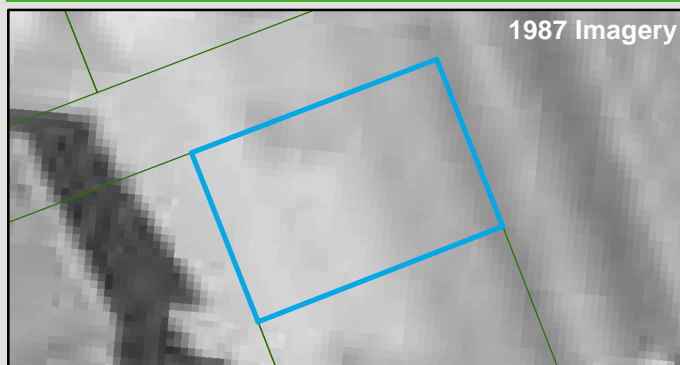
Historic Land Use
Residential

Key Information Supporting EAO Decision

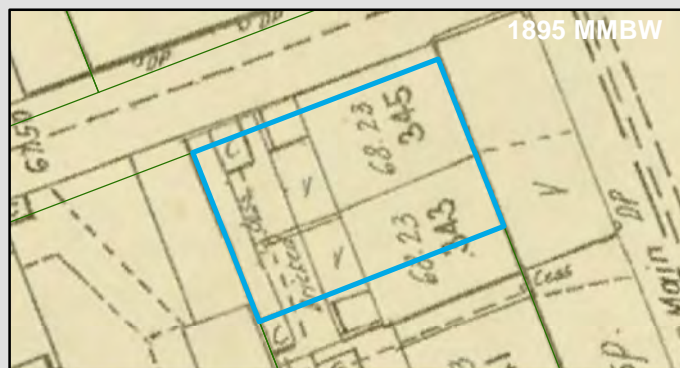
No current or previous potentially contaminating land uses identified on site.

Additional Considerations

Resources used to make decision



1987 Imagery



1895 MMBW

Resources used to make decision

Mahlstedt fire insurance maps (CBD 1923-25), Site inspection, Historical aerial photographs (1968/9 & 1987)

WEST MELBOURNE EAO - AMENDMENT C309 -
WEST MELBOURNE STRUCTURE PLAN:
PRELIMINARY LAND CONTAMINATION ASSESSMENT

CITY OF MELBOURNE

GIS ID: 1794

COPYRIGHT

Aerial Imagery copyright
City of Melbourne

0 1.5 3 6 9 12 15 metres

SCALE (at A4) (BUILDING MAP) 1:300
DATUM GDA 94, PROJECTION MGA Zone 55

PROJECT: 18113718
DATE: 27 FEB 2019
DRAWN: TPC
CHECKED: IMK



Information contained on this drawing is the copyright of Golder Associates Pty. Ltd. Unauthorised use or reproduction of this plan either wholly or in part without written permission infringes copyright. © Golder Associates Pty. Ltd.

CoM Property ID: 600448

57-63 Rosslyn Street WEST MELBOURNE VIC 3003



LEGEND

 Parcel Boundary



Action Plan

EAO Recommendation

Do Not Apply EAO

EAO Comment

Site has not identified as being potentially contaminated in accordance with the Potentially Contaminated Land General Practice Note (DSE, 2005)

Resources used to make decision



Site Use Summary

Current Land Use
Residential

Historic Land Use
Residential



Key Information Supporting EAO Decision

Research indicates this site has currently and previously been used for residential purposes.

Additional Considerations

Resources used to make decision

Site inspection, Historical aerial photographs (1968/9 & 1987)

WEST MELBOURNE EAO - AMENDMENT C309 -
WEST MELBOURNE STRUCTURE PLAN:
PRELIMINARY LAND CONTAMINATION ASSESSMENT

CITY OF MELBOURNE

GIS ID: 13447

COPYRIGHT

Aerial Imagery copyright
City of Melbourne

0 5 10 20 30 40 50 metres

SCALE (at A4) (BUILDING MAP) 1:1,000
DATUM GDA 94, PROJECTION MGA Zone 55

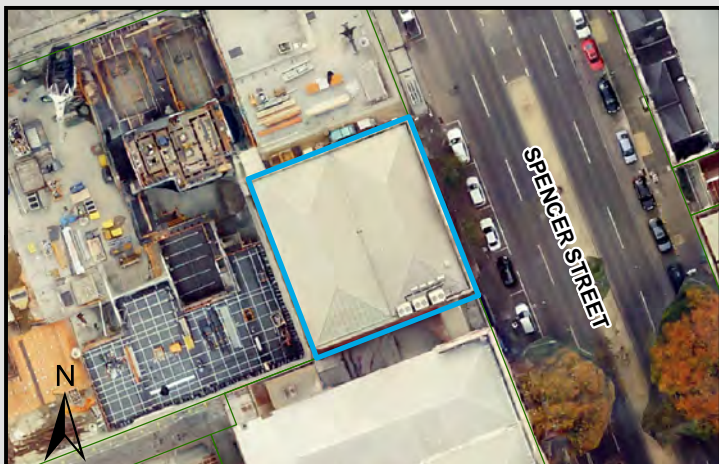
PROJECT: 18113718
DATE: 27 FEB 2019
DRAWN: TPC
CHECKED: IMK



Information contained on this drawing is the copyright of Golder Associates Pty. Ltd. Unauthorised use or reproduction of this plan either wholly or in part without written permission infringes copyright. © Golder Associates Pty. Ltd.

CoM Property ID: 604698

371-383 Spencer Street WEST MELBOURNE VIC 3003



LEGEND

 Parcel Boundary



Action Plan

EAO Recommendation

Do Not Apply EAO

EAO Comment

Site has not identified as being potentially contaminated in accordance with the Potentially Contaminated Land General Practice Note (DSE, 2005)

Site Use Summary

Current Land Use
Commercial

Historic Land Use
Commercial

Key Information Supporting EAO Decision

No current or previous potentially contaminating land uses identified on site.

Additional Considerations

Fire Insurance plans indicate building associated with Sands and McDougall. Most likely an office building.

Resources used to make decision



Resources used to make decision

Site Inspection,
Mahlstedt fire insurance maps (CBD 1923-25),
Historical aerial photographs

WEST MELBOURNE EAO - AMENDMENT C309 -
WEST MELBOURNE STRUCTURE PLAN:
PRELIMINARY LAND CONTAMINATION ASSESSMENT

CITY OF MELBOURNE

GIS ID: 14183

COPYRIGHT

Aerial Imagery copyright
City of Melbourne

0 5 10 20 30 40 50 metres

SCALE (at A4) (BUILDING MAP) 1:1,000
DATUM GDA 94, PROJECTION MGA Zone 55

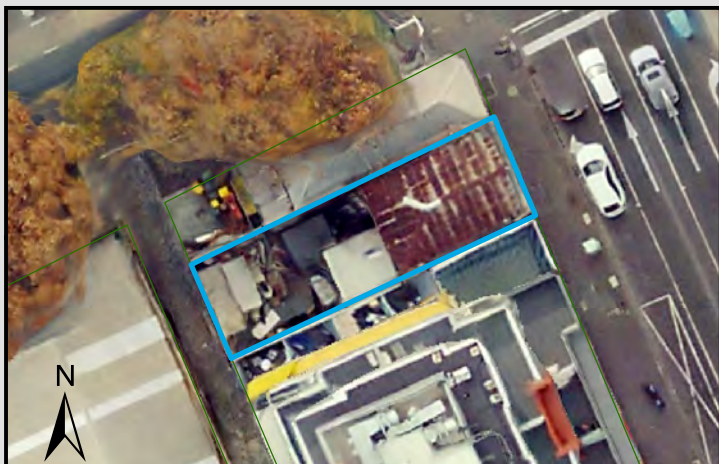
PROJECT: 18113718
DATE: 27 FEB 2019
DRAWN: TPC
CHECKED: IMK



Information contained on this drawing is the copyright of Golder Associates Pty. Ltd. Unauthorised use or reproduction of this plan either wholly or in part without written permission infringes copyright. © Golder Associates Pty. Ltd.

CoM Property ID: 608842

437-439 Spencer Street WEST MELBOURNE VIC 3003



LEGEND

 Parcel Boundary



Action Plan

EAO Recommendation

Do Not Apply EAO

EAO Comment

Site has not identified as being potentially contaminated in accordance with the Potentially Contaminated Land General Practice Note (DSE, 2005)

Site Use Summary

Current Land Use
Commercial

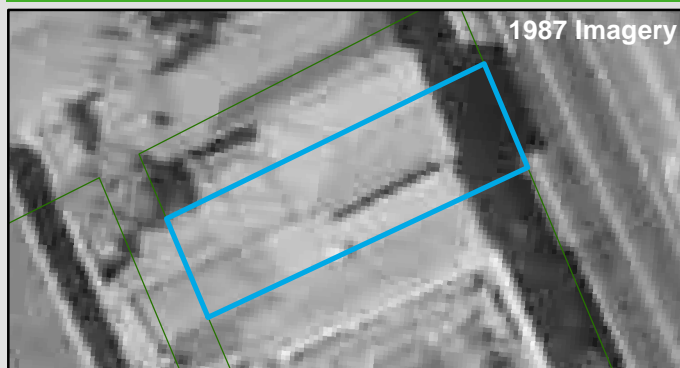
Historic Land Use
Residential

Key Information Supporting EAO Decision

No current or previous potentially contaminating land uses identified on site.

Additional Considerations

Resources used to make decision



Resources used to make decision

Site Inspection,
MMBW Maps (1895),
Historical aerial photographs

WEST MELBOURNE EAO - AMENDMENT C309 -
WEST MELBOURNE STRUCTURE PLAN:
PRELIMINARY LAND CONTAMINATION ASSESSMENT

CITY OF MELBOURNE

GIS ID: 5271

COPYRIGHT

Aerial Imagery copyright
City of Melbourne

0 2.5 5 10 15 20 25 metres

SCALE (at A4) (BUILDING MAP) 1:500
DATUM GDA 94, PROJECTION MGA Zone 55

PROJECT: 18113718
DATE: 27 FEB 2019
DRAWN: TPC
CHECKED: IMK



Information contained on this drawing is the copyright of Golder Associates Pty. Ltd. Unauthorised use or reproduction of this plan either wholly or in part without written permission infringes copyright. © Golder Associates Pty. Ltd.

CoM Property ID: 612807

59 Capel Street WEST MELBOURNE VIC 3003



LEGEND

 Parcel Boundary



Action Plan

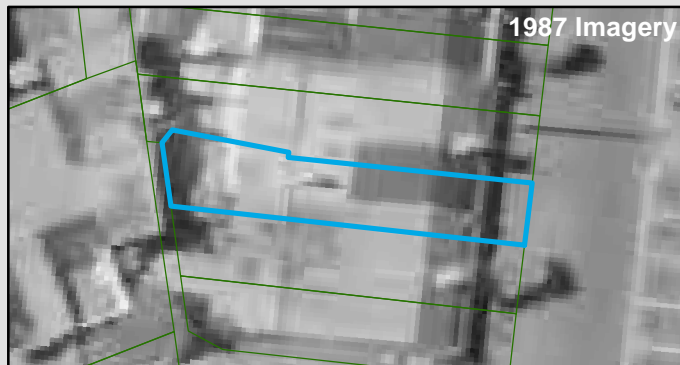
EAO Recommendation

Do Not Apply EAO

EAO Comment

Site has not identified as being potentially contaminated in accordance with the Potentially Contaminated Land General Practice Note (DSE, 2005)

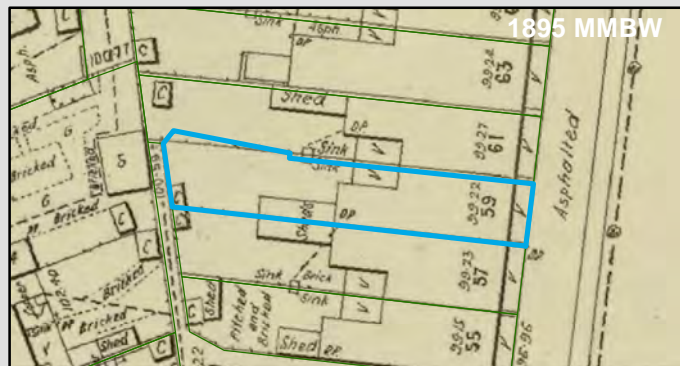
Resources used to make decision



Site Use Summary

Current Land Use
Residential

Historic Land Use
Residential



Key Information Supporting EAO Decision

Research indicates this site has currently and previously been used for residential purposes.

Additional Considerations

Resources used to make decision

Site inspection, Historical aerial photographs (1968/9 & 1987)

WEST MELBOURNE EAO - AMENDMENT C309 -
WEST MELBOURNE STRUCTURE PLAN:
PRELIMINARY LAND CONTAMINATION ASSESSMENT

CITY OF MELBOURNE

GIS ID: 13183

COPYRIGHT

Aerial Imagery copyright
City of Melbourne

0 2.5 5 10 15 20 25 metres

SCALE (at A4) (BUILDING MAP) 1:500
DATUM GDA 94, PROJECTION MGA Zone 55

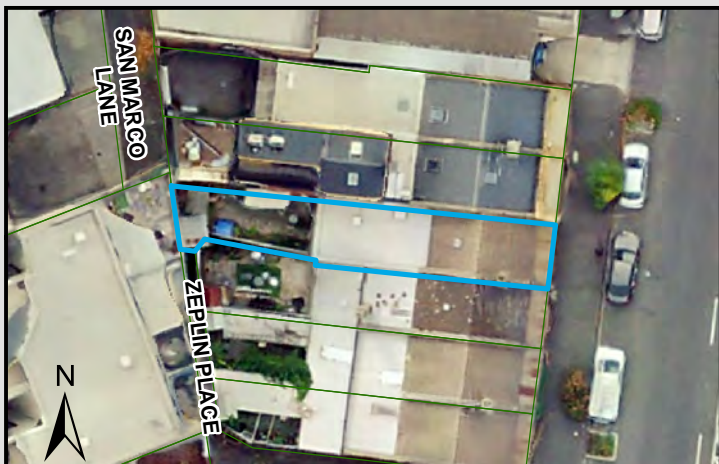
PROJECT: 18113718
DATE: 27 FEB 2019
DRAWN: TPC
CHECKED: IMK



Information contained on this drawing is the copyright of Golder Associates Pty. Ltd. Unauthorised use or reproduction of this plan either wholly or in part without written permission infringes copyright. © Golder Associates Pty. Ltd.

CoM Property ID: 612808

61 Capel Street WEST MELBOURNE VIC 3003



LEGEND

 Parcel Boundary



Action Plan

EAO Recommendation

Do Not Apply EAO

EAO Comment

Site has not identified as being potentially contaminated in accordance with the Potentially Contaminated Land General Practice Note (DSE, 2005)

Site Use Summary

Current Land Use
Residential

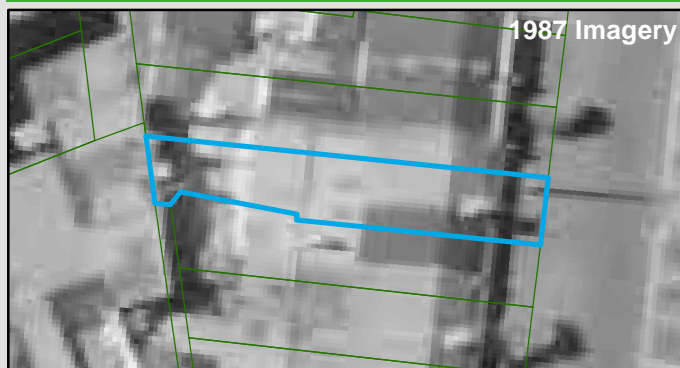
Historic Land Use
Residential

Key Information Supporting EAO Decision

Research indicates this site has currently and previously been used for residential purposes.

Additional Considerations

Resources used to make decision



Resources used to make decision

Site inspection, Historical aerial photographs (1968/9 & 1987)

WEST MELBOURNE EAO - AMENDMENT C309 -
WEST MELBOURNE STRUCTURE PLAN:
PRELIMINARY LAND CONTAMINATION ASSESSMENT

CITY OF MELBOURNE

GIS ID: 13182

COPYRIGHT

Aerial Imagery copyright
City of Melbourne

0 2.5 5 10 15 20 25 metres

SCALE (at A4) (BUILDING MAP) 1:500
DATUM GDA 94, PROJECTION MGA Zone 55

PROJECT: 18113718
DATE: 27 FEB 2019
DRAWN: TPC
CHECKED: IMK



Information contained on this drawing is the copyright of Golder Associates Pty. Ltd. Unauthorised use or reproduction of this plan either wholly or in part without written permission infringes copyright. © Golder Associates Pty. Ltd.

CoM Property ID: 621366

11 Miller Place WEST MELBOURNE VIC 3003



LEGEND

 Parcel Boundary



Action Plan

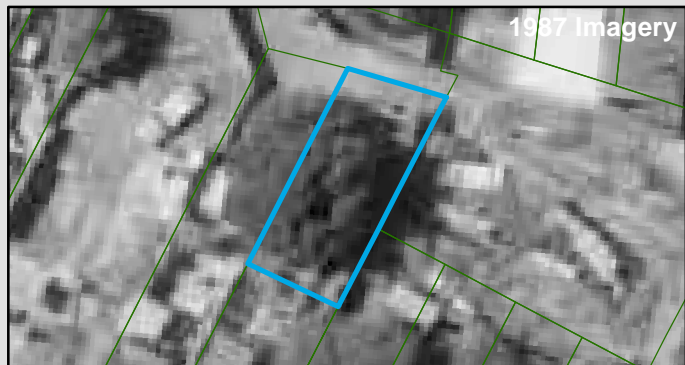
EAO Recommendation

Do Not Apply EAO

EAO Comment

Site has not identified as being potentially contaminated in accordance with the Potentially Contaminated Land General Practice Note (DSE, 2005)

Resources used to make decision



Site Use Summary

Current Land Use

Other (unsure)

Historic Land Use

Other (unsure)

Key Information Supporting EAO Decision

No current or previous potentially contaminating land uses identified on site.

Additional Considerations

Historic aerials show block has been vacant since earliest 1969.

Resources used to make decision

West Melbourne Heritage Review Appendix 2 (May 2016), Site inspection, Historical aerial photographs (1968/9 & 1987)

WEST MELBOURNE EAO - AMENDMENT C309 -
WEST MELBOURNE STRUCTURE PLAN:
PRELIMINARY LAND CONTAMINATION ASSESSMENT

CITY OF MELBOURNE

GIS ID: 13246

COPYRIGHT

Aerial Imagery copyright
City of Melbourne

0 2.5 5 10 15 20 25 metres

SCALE (at A4) (BUILDING MAP) 1:500
DATUM GDA 94, PROJECTION MGA Zone 55

PROJECT: 18113718
DATE: 27 FEB 2019
DRAWN: TPC
CHECKED: IMK



Information contained on this drawing is the copyright of Golder Associates Pty. Ltd. Unauthorised use or reproduction of this plan either wholly or in part without written permission infringes copyright. © Golder Associates Pty. Ltd.

CoM Property ID: 639693

45 Silk Place WEST MELBOURNE VIC 3003



LEGEND

 Parcel Boundary



Action Plan

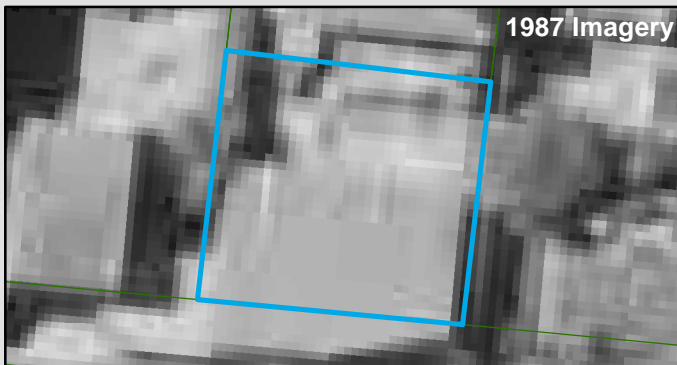
EAO Recommendation

Do Not Apply EAO

EAO Comment

Site has not identified as being potentially contaminated in accordance with the Potentially Contaminated Land General Practice Note (DSE, 2005)

Resources used to make decision



Site Use Summary

Current Land Use
Residential

Historic Land Use
Residential

Key Information Supporting EAO Decision

Research indicates this site has currently and previously been used for residential purposes.



Additional Considerations

Resources used to make decision

Site inspection, Historical aerial photographs (1968/9 & 1987)

WEST MELBOURNE EAO - AMENDMENT C309 -
WEST MELBOURNE STRUCTURE PLAN:
PRELIMINARY LAND CONTAMINATION ASSESSMENT

CITY OF MELBOURNE

GIS ID: 13761

COPYRIGHT

Aerial Imagery copyright
City of Melbourne

0 1.5 3 6 9 12 15 metres

SCALE (at A4) (BUILDING MAP) 1:300
DATUM GDA 94, PROJECTION MGA Zone 55

PROJECT: 18113718
DATE: 27 FEB 2019
DRAWN: TPC
CHECKED: IMK



Information contained on this drawing is the copyright of Golder Associates Pty. Ltd. Unauthorised use or reproduction of this plan either wholly or in part without written permission infringes copyright. © Golder Associates Pty. Ltd.

CoM Property ID: 648457

143 Rosslyn Street WEST MELBOURNE VIC 3003



LEGEND

 Parcel Boundary



Action Plan

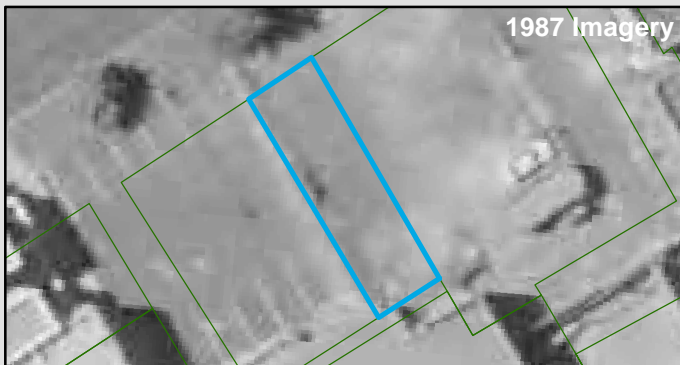
EAO Recommendation

Do Not Apply EAO

EAO Comment

Site has not identified as being potentially contaminated in accordance with the Potentially Contaminated Land General Practice Note (DSE, 2005)

Resources used to make decision



Site Use Summary

Current Land Use
Other (unsure)

Historic Land Use
Residential



Key Information Supporting EAO Decision

No current or previous potentially contaminating land uses identified on site.

Additional Considerations

Previously a row of houses.

Resources used to make decision

West Melbourne Heritage Review Appendix 2 (May 2016), Site inspection, Historical aerial photographs (1968/9 & 1987)

WEST MELBOURNE EAO - AMENDMENT C309 -
WEST MELBOURNE STRUCTURE PLAN:
PRELIMINARY LAND CONTAMINATION ASSESSMENT

CITY OF MELBOURNE

GIS ID: 13846

COPYRIGHT

Aerial Imagery copyright
City of Melbourne

0 3 6 12 18 24 30 metres

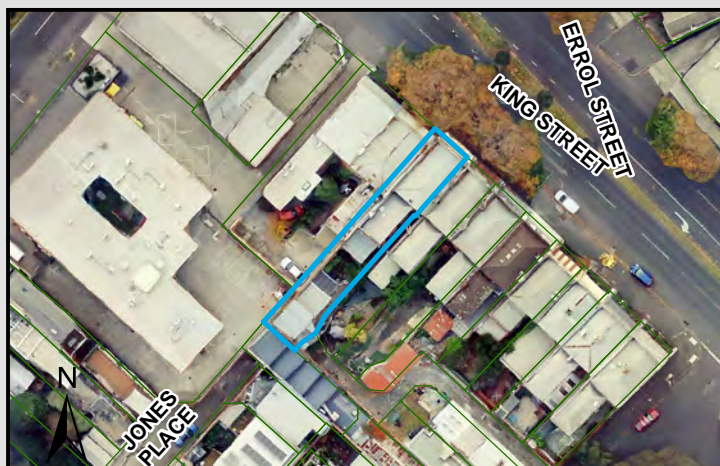
SCALE (at A4) (BUILDING MAP) 1:600
DATUM GDA 94, PROJECTION MGA Zone 55

PROJECT: 18113718
DATE: 27 FEB 2019
DRAWN: TPC
CHECKED: IMK



CoM Property ID: 105355

597 King Street WEST MELBOURNE VIC 3003



LEGEND

 Parcel Boundary

Action Plan

EAO Recommendation

Do Not Apply EAO

EAO Comment

Site has not identified as being potentially contaminated in accordance with the Potentially Contaminated Land General Practice Note (DSE, 2005)

Site Use Summary

Current Land Use
Residential

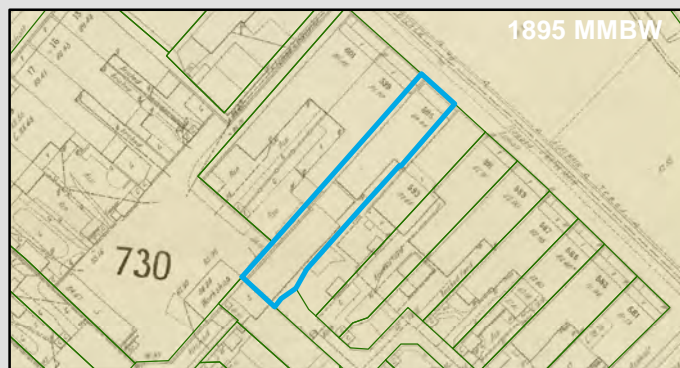
Historic Land Use
Residential

Key Information Supporting EAO Decision

No current or previous potentially contaminating land uses identified on site.

Additional Considerations

Resources used to make decision



Resources used to make decision

Site inspection, Historical aerial photographs (1968/9 & 1987)

WEST MELBOURNE EAO - AMENDMENT C309 -
WEST MELBOURNE STRUCTURE PLAN:
PRELIMINARY LAND CONTAMINATION ASSESSMENT

CITY OF MELBOURNE

GIS ID: 7607

COPYRIGHT

Aerial Imagery copyright
City of Melbourne

0 5 10 20 30 40 50 metres

SCALE (at A4) (BUILDING MAP) 1:1,200
DATUM GDA 94, PROJECTION MGA Zone 55

PROJECT: 18113718
DATE: 16 APR 2019
DRAWN: TPC
CHECKED: IMK



APPENDIX E

Important Information

The document ("Report") to which this page is attached and which this page forms a part of, has been issued by Golder Associates Pty Ltd ("Golder") subject to the important limitations and other qualifications set out below.

This Report constitutes or is part of services ("Services") provided by Golder to its client ("Client") under and subject to a contract between Golder and its Client ("Contract"). The contents of this page are not intended to and do not alter Golder's obligations (including any limits on those obligations) to its Client under the Contract.

This Report is provided for use solely by Golder's Client and persons acting on the Client's behalf, such as its professional advisers. Golder is responsible only to its Client for this Report. Golder has no responsibility to any other person who relies or makes decisions based upon this Report or who makes any other use of this Report. Golder accepts no responsibility for any loss or damage suffered by any person other than its Client as a result of any reliance upon any part of this Report, decisions made based upon this Report or any other use of it.

This Report has been prepared in the context of the circumstances and purposes referred to in, or derived from, the Contract and Golder accepts no responsibility for use of the Report, in whole or in part, in any other context or circumstance or for any other purpose.

The scope of Golder's Services and the period of time they relate to are determined by the Contract and are subject to restrictions and limitations set out in the Contract. If a service or other work is not expressly referred to in this Report, do not assume that it has been provided or performed. If a matter is not addressed in this Report, do not assume that any determination has been made by Golder in regards to it.

At any location relevant to the Services conditions may exist which were not detected by Golder, in particular due to the specific scope of the investigation Golder has been engaged to undertake. Conditions can only be verified at the exact location of any tests undertaken. Variations in conditions may occur between tested locations and there may be conditions which have not been revealed by the investigation and which have not therefore been taken into account in this Report.

Golder accepts no responsibility for and makes no representation as to the accuracy or completeness of the information provided to it by or on behalf of the Client or sourced from any third party. Golder has assumed that such information is correct unless otherwise stated and no responsibility is accepted by Golder for incomplete or inaccurate data supplied by its Client or any other person for whom Golder is not responsible. Golder has not taken account of matters that may have existed when the Report was prepared but which were only later disclosed to Golder.

Having regard to the matters referred to in the previous paragraphs on this page in particular, carrying out the Services has allowed Golder to form no more than an opinion as to the actual conditions at any relevant location. That opinion is necessarily constrained by the extent of the information collected by Golder or otherwise made available to Golder. Further, the passage of time may affect the accuracy, applicability or usefulness of the opinions, assessments or other information in this Report. This Report is based upon the information and other circumstances that existed and were known to Golder when the Services were performed and this Report was prepared. Golder has not considered the effect of any possible future developments including physical changes to any relevant location or changes to any laws or regulations relevant to such location.

Where permitted by the Contract, Golder may have retained subconsultants affiliated with Golder to provide some or all of the Services. However, it is Golder which remains solely responsible for the Services and there is no legal recourse against any of Golder's affiliated companies or the employees, officers or directors of any of them.

By date, or revision, the Report supersedes any prior report or other document issued by Golder dealing with any matter that is addressed in the Report.

Any uncertainty as to the extent to which this Report can be used or relied upon in any respect should be referred to Golder for clarification



golder.com