

CoM Property ID: 105467

496-508 La Trobe Street WEST MELBOURNE VIC 3003



LEGEND

 Parcel Boundary

Action Plan

EAO Recommendation

Apply EAO

EAO Comment

Site has been identified as being potentially contaminated in accordance with the Potentially Contaminated Land General Practice Note (DSE, 2005)

Site Use Summary

Current Land Use
Industrial

Historic Land Use
Industrial

Key Information Supporting EAO Decision

Potentially contaminating land use/s identified on site as listed in the DSE General Practice Note (2005): Foundry, Electricity generation/power Station

Additional Considerations

Resources used to make decision



Resources used to make decision

Mahlstedt fire insurance maps (CBD 1923-25), Site inspection, Historical aerial photographs (1968/9 & 1987), Publically available Melbourne Street Directories (Yellow Pages 1990, Urban Business Directory 1975/6 & 1984)

WEST MELBOURNE EAO - AMENDMENT C309 -
WEST MELBOURNE STRUCTURE PLAN:
PRELIMINARY LAND CONTAMINATION ASSESSMENT

CITY OF MELBOURNE

GIS ID: 8321

COPYRIGHT

Aerial Imagery copyright
City of Melbourne

0 5 10 20 30 40 50 metres

SCALE (at A4) (BUILDING MAP) 1:1,900
DATUM GDA 94, PROJECTION MGA Zone 55

PROJECT: 18113718
DATE: 27 FEB 2019
DRAWN: TPC
CHECKED: IMK



Information contained on this drawing is the copyright of Golder Associates Pty. Ltd. Unauthorised use or reproduction of this plan either wholly or in part without written permission infringes copyright. © Golder Associates Pty. Ltd.

CoM Property ID: 105468

488-494 La Trobe Street WEST MELBOURNE VIC 3003



LEGEND

 Parcel Boundary



Action Plan

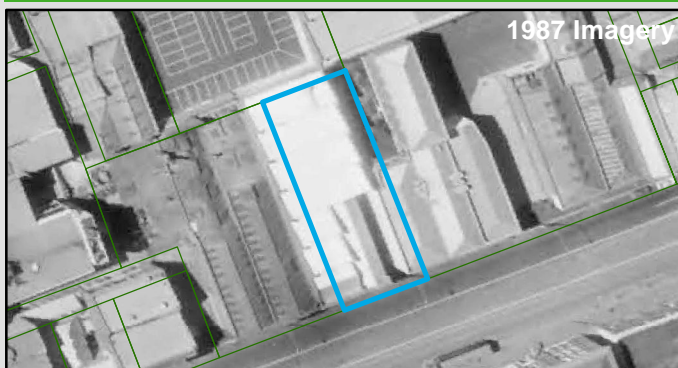
EAO Recommendation

Apply EAO

EAO Comment

Site has been identified as being potentially contaminated in accordance with the Potentially Contaminated Land General Practice Note (DSE, 2005)

Resources used to make decision



Site Use Summary

Current Land Use
Commercial

Historic Land Use
Industrial



Key Information Supporting EAO Decision

Potentially contaminating land use/s identified on site as listed in the DSE General Practice Note (2005): Other industrial activities (Medium Potential), Iron and steel works

Additional Considerations

Previously 'Mica & Insulating Supplies' and 'Edward J. and Samuel Spink workshop'.

Resources used to make decision

Mahlstedt fire insurance maps (CBD 1923-25), West Melbourne Heritage Review Appendix 2 (May 2016), Site inspection, Historical aerial photographs (1968/9 & 1987)

WEST MELBOURNE EAO - AMENDMENT C309 -
WEST MELBOURNE STRUCTURE PLAN:
PRELIMINARY LAND CONTAMINATION ASSESSMENT

CITY OF MELBOURNE

GIS ID: 8322

COPYRIGHT

Aerial Imagery copyright
City of Melbourne

0 5 10 20 30 40 50 metres

SCALE (at A4) (BUILDING MAP) 1:1,800
DATUM GDA 94, PROJECTION MGA Zone 55

PROJECT: 18113718
DATE: 27 FEB 2019
DRAWN: TPC
CHECKED: IMK



Information contained on this drawing is the copyright of Golder Associates Pty. Ltd. Unauthorised use or reproduction of this plan either wholly or in part without written permission infringes copyright. © Golder Associates Pty. Ltd.

CoM Property ID: 105469

460-462 La Trobe Street WEST MELBOURNE VIC 3003



LEGEND

 Parcel Boundary

Action Plan

EAO Recommendation

Apply EAO

EAO Comment

Historical industrial/commercial building with documented or likely past industrial use with possible high potential for contamination.

Resources used to make decision



Site Use Summary

Current Land Use
Residential

Historic Land Use
Commercial

Key Information Supporting EAO Decision

Unknown current or past industrial use identified on site.

Additional Considerations

Formerly 'Nu. Roof Co.' and 'Taximeter Pty. Ltd. meter mechanics'.

Resources used to make decision

Mahlstedt fire insurance maps (CBD 1923-25), West Melbourne Heritage Review Appendix 2 (May 2016), Site inspection, Historical aerial photographs (1968/9 & 1987)

WEST MELBOURNE EAO - AMENDMENT C309 -
WEST MELBOURNE STRUCTURE PLAN:
PRELIMINARY LAND CONTAMINATION ASSESSMENT

CITY OF MELBOURNE

GIS ID: 8323

COPYRIGHT

Aerial Imagery copyright
City of Melbourne

0 4 8 16 24 32 40 metres

SCALE (at A4) (BUILDING MAP) 1:800
DATUM GDA 94, PROJECTION MGA Zone 55

PROJECT: 18113718
DATE: 27 FEB 2019
DRAWN: TPC
CHECKED: IMK



Information contained on this drawing is the copyright of Golder Associates Pty. Ltd. Unauthorised use or reproduction of this plan either wholly or in part without written permission infringes copyright. © Golder Associates Pty. Ltd.

CoM Property ID: 105472

448-454 La Trobe Street WEST MELBOURNE VIC 3003



LEGEND

 Parcel Boundary

Action Plan

EAO Recommendation

Apply EAO

EAO Comment

Historical industrial/commercial building with documented or likely past industrial use with possible high potential for contamination.

Site Use Summary

Current Land Use
Commercial

Historic Land Use
Other (unsure)

Key Information Supporting EAO Decision

Unknown current or past industrial use identified on site.

Additional Considerations

Company name listed - "Leech & Co.". Aerials show a saw tooth roof on site, which indicates likely past industrial use.

Resources used to make decision



Resources used to make decision

Mahlstedt fire insurance maps (CBD 1923-25), Site inspection, Historical aerial photographs (1968/9 & 1987)

WEST MELBOURNE EAO - AMENDMENT C309 -
WEST MELBOURNE STRUCTURE PLAN:
PRELIMINARY LAND CONTAMINATION ASSESSMENT

CITY OF MELBOURNE

GIS ID: 8325

COPYRIGHT

Aerial Imagery copyright
City of Melbourne

0 4.5 9 18 27 36 45 metres

SCALE (at A4) (BUILDING MAP) 1:900
DATUM GDA 94, PROJECTION MGA Zone 55

PROJECT: 18113718
DATE: 27 FEB 2019
DRAWN: TPC
CHECKED: IMK



Information contained on this drawing is the copyright of Golder Associates Pty. Ltd. Unauthorised use or reproduction of this plan either wholly or in part without written permission infringes copyright. © Golder Associates Pty. Ltd.

CoM Property ID: 106594

152-160 Miller Street WEST MELBOURNE VIC 3003



LEGEND

 Parcel Boundary



Action Plan

EAO Recommendation

Apply EAO

EAO Comment

Historical industrial/commercial building with documented or likely past industrial use with possible high potential for contamination.

Resources used to make decision



Site Use Summary

Current Land Use
Commercial

Historic Land Use
Industrial



Key Information Supporting EAO Decision

Unknown current or past industrial use identified on site.

Additional Considerations

Brick building built in the 1930's. 1969 aerial shows building typical of warehouse, unknown use.

Resources used to make decision

City of Melbourne interactive map (2019), West Melbourne Heritage Review Appendix 2 (May 2016), Site inspection, Historical aerial photographs (1968/9 & 1987)

WEST MELBOURNE EAO - AMENDMENT C309 -
WEST MELBOURNE STRUCTURE PLAN:
PRELIMINARY LAND CONTAMINATION ASSESSMENT

CITY OF MELBOURNE

GIS ID: 14312

COPYRIGHT

Aerial Imagery copyright
City of Melbourne

0 5 10 20 30 40 50 metres

SCALE (at A4) (BUILDING MAP) 1:1,000
DATUM GDA 94, PROJECTION MGA Zone 55

PROJECT: 18113718
DATE: 27 FEB 2019
DRAWN: TPC
CHECKED: IMK



CoM Property ID: 106595

130-136 Miller Street WEST MELBOURNE VIC 3003



LEGEND

 Parcel Boundary

Action Plan

EAO Recommendation

Apply EAO

EAO Comment

Historical industrial/commercial building with documented or likely past industrial use with possible high potential for contamination.

Site Use Summary

Current Land Use
Commercial

Historic Land Use
Other (unsure)

Key Information Supporting EAO Decision

Unknown current or past industrial use identified on site.

Additional Considerations

Saw tooth Roof. Formerly Bethune P. N. engineers.

Resources used to make decision



Resources used to make decision

West Melbourne Heritage Review Appendix 2 (May 2016), Site inspection, Historical aerial photographs (1968/9 & 1987)

WEST MELBOURNE EAO - AMENDMENT C309 -
WEST MELBOURNE STRUCTURE PLAN:
PRELIMINARY LAND CONTAMINATION ASSESSMENT

CITY OF MELBOURNE

GIS ID: 14307

COPYRIGHT

Aerial Imagery copyright
City of Melbourne

0 5 10 20 30 40 50 metres

SCALE (at A4) (BUILDING MAP) 1:1,200
DATUM GDA 94, PROJECTION MGA Zone 55

PROJECT: 18113718
DATE: 27 FEB 2019
DRAWN: TPC
CHECKED: IMK



Information contained on this drawing is the copyright of Golder Associates Pty. Ltd. Unauthorised use or reproduction of this plan either wholly or in part without written permission infringes copyright. © Golder Associates Pty. Ltd.

CoM Property ID: 106600

102-104 Miller Street WEST MELBOURNE VIC 3003



LEGEND

 Parcel Boundary

Action Plan

EAO Recommendation

Apply EAO

EAO Comment

Historical industrial/commercial building with documented or likely past industrial use with possible high potential for contamination.

Resources used to make decision



Site Use Summary

Current Land Use
Commercial

Historic Land Use
Commercial

Key Information Supporting EAO Decision

Unknown current or past industrial use identified on site.

Additional Considerations

Brick warehouse built about 1960.

Resources used to make decision

City of Melbourne interactive map (2019), West Melbourne Heritage Review Appendix 2 (May 2016), Site inspection, Historical aerial photographs (1968/9 & 1987)

WEST MELBOURNE EAO - AMENDMENT C309 -
WEST MELBOURNE STRUCTURE PLAN:
PRELIMINARY LAND CONTAMINATION ASSESSMENT

CITY OF MELBOURNE

GIS ID: 8509

COPYRIGHT

Aerial Imagery copyright
City of Melbourne

0 5 10 20 30 40 50 metres

SCALE (at A4) (BUILDING MAP) 1:1,200
DATUM GDA 94, PROJECTION MGA Zone 55

PROJECT: 18113718
DATE: 27 FEB 2019
DRAWN: TPC
CHECKED: IMK



Information contained on this drawing is the copyright of Golder Associates Pty. Ltd. Unauthorised use or reproduction of this plan either wholly or in part without written permission infringes copyright. © Golder Associates Pty. Ltd.

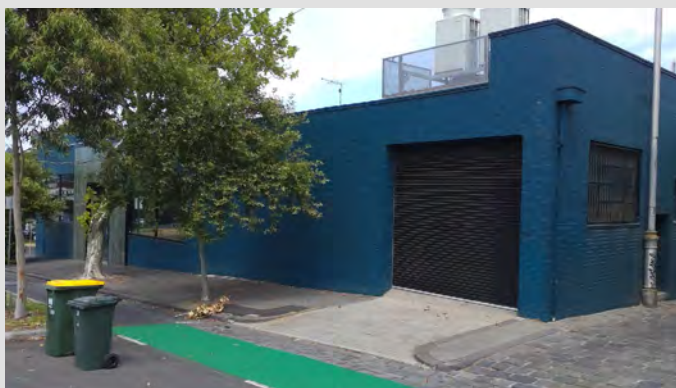
CoM Property ID: 106604

86-88 Miller Street WEST MELBOURNE VIC 3003



LEGEND

 Parcel Boundary



Action Plan

EAO Recommendation

Apply EAO

EAO Comment

Historical industrial/commercial building with documented or likely past industrial use with possible high potential for contamination.

Resources used to make decision



Site Use Summary

Current Land Use
Commercial

Historic Land Use
Residential



Key Information Supporting EAO Decision

Unknown current or past industrial use identified on site.

Additional Considerations

Formerly John Ramage house site from 1868.

Resources used to make decision

West Melbourne Heritage Review Appendix 2 (May 2016), Site inspection, Historical aerial photographs (1968/9 & 1987)

WEST MELBOURNE EAO - AMENDMENT C309 -
WEST MELBOURNE STRUCTURE PLAN:
PRELIMINARY LAND CONTAMINATION ASSESSMENT

CITY OF MELBOURNE

GIS ID: 8511

COPYRIGHT

Aerial Imagery copyright
City of Melbourne

0 5 10 20 30 40 50 metres

SCALE (at A4) (BUILDING MAP) 1:1,100
DATUM GDA 94, PROJECTION MGA Zone 55


PROJECT: 18113718
DATE: 27 FEB 2019
DRAWN: TPC
CHECKED: IMK



Information contained on this drawing is the copyright of Golder Associates Pty. Ltd. Unauthorised use or reproduction of this plan either wholly or in part without written permission infringes copyright. © Golder Associates Pty. Ltd.



LEGEND

 Parcel Boundary

Action Plan

EAO Recommendation

Apply EAO

EAO Comment

Site has been identified as being potentially contaminated in accordance with the Potentially Contaminated Land General Practice Note (DSE, 2005)

Site Use Summary

Current Land Use	Historic Land Use
Commercial	Industrial

Key Information Supporting EAO Decision

Potentially contaminating land use/s identified on site as listed in the DSE General Practice Note (2005): Textile operations

Additional Considerations

Formerly 'Britannia Tie Company Pty. Ltd. factory'.

Resources used to make decision



Resources used to make decision

West Melbourne Heritage Review Appendix 2 (May 2016), Site inspection, Historical aerial photographs (1968/9 & 1987)

WEST MELBOURNE EAO - AMENDMENT C309 -
WEST MELBOURNE STRUCTURE PLAN:
PRELIMINARY LAND CONTAMINATION ASSESSMENT

CITY OF MELBOURNE

GIS ID: 8579

COPYRIGHT

Aerial Imagery copyright
City of Melbourne

0 5 10 20 30 40 50 metres

SCALE (at A4) (BUILDING MAP) 1:1,300
DATUM GDA 94, PROJECTION MGA Zone 55

PROJECT: 18113718
DATE: 27 FEB 2019
DRAWN: TPC
CHECKED: IMK



Information contained on this drawing is the copyright of Golder Associates Pty. Ltd. Unauthorised use or reproduction of this plan either wholly or in part without written permission infringes copyright. © Golder Associates Pty. Ltd.

CoM Property ID: 107473

25-31 Peel Street WEST MELBOURNE VIC 3003



LEGEND

 Parcel Boundary



Action Plan

EAO Recommendation

Apply EAO

EAO Comment

Site has been identified as being potentially contaminated in accordance with the Potentially Contaminated Land General Practice Note (DSE, 2005)

Site Use Summary

Current Land Use
Commercial

Historic Land Use
Industrial

Key Information Supporting EAO Decision

Potentially contaminating land use/s identified on site as listed in the DSE General Practice Note (2005): Service station/fuel storage

Additional Considerations

Resources used to make decision



Resources used to make decision

West Melbourne Heritage Review Appendix 2 (May 2016), Publicly available Melbourne Street Directories (Yellow Pages 1990, Urban Business Directory 1975/6 & 1984), Site inspection, Historical aerial photographs (1968/9 & 1987)

WEST MELBOURNE EAO - AMENDMENT C309 -
WEST MELBOURNE STRUCTURE PLAN:
PRELIMINARY LAND CONTAMINATION ASSESSMENT

CITY OF MELBOURNE

GIS ID: 7457

COPYRIGHT

Aerial Imagery copyright
City of Melbourne

0 3 6 12 18 24 30 metres

SCALE (at A4) (BUILDING MAP) 1:600
DATUM GDA 94, PROJECTION MGA Zone 55

PROJECT: 18113718
DATE: 27 FEB 2019
DRAWN: TPC
CHECKED: IMK



Information contained on this drawing is the copyright of Golder Associates Pty. Ltd. Unauthorised use or reproduction of this plan either wholly or in part without written permission infringes copyright. © Golder Associates Pty. Ltd.

CoM Property ID: 107475

39-47 Peel Street WEST MELBOURNE VIC 3003



LEGEND

 Parcel Boundary



Action Plan

EAO Recommendation

Apply EAO

EAO Comment

Site has been identified as being potentially contaminated in accordance with the Potentially Contaminated Land General Practice Note (DSE, 2005)

Resources used to make decision

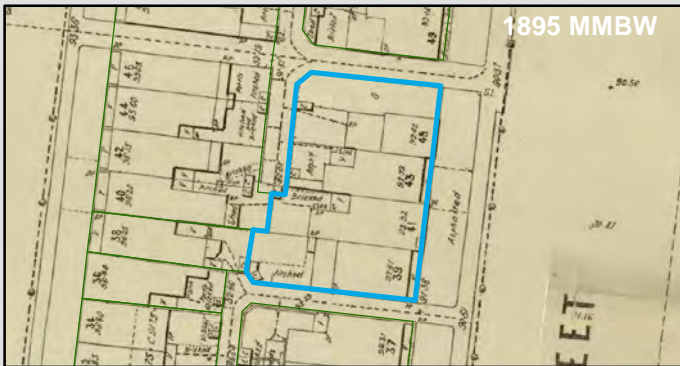


1987 Imagery

Site Use Summary

Current Land Use
Commercial

Historic Land Use
Industrial



1895 MMBW

Key Information Supporting EAO Decision

Potentially contaminating land use/s identified on site as listed in the DSE General Practice Note (2005): Service station/fuel storage

Additional Considerations

Resources used to make decision

Sands and McDougall Directory (1929, 1935, 1942, 1960), Site inspection, Historical aerial photographs (1968/9 & 1987)

WEST MELBOURNE EAO - AMENDMENT C309 -
WEST MELBOURNE STRUCTURE PLAN:
PRELIMINARY LAND CONTAMINATION ASSESSMENT

CITY OF MELBOURNE

GIS ID: 13083

COPYRIGHT

Aerial Imagery copyright
City of Melbourne

0 4.5 9 18 27 36 45 metres

SCALE (at A4) (BUILDING MAP) 1:900
DATUM GDA 94, PROJECTION MGA Zone 55

PROJECT: 18113718
DATE: 27 FEB 2019
DRAWN: TPC
CHECKED: IMK



Information contained on this drawing is the copyright of Golder Associates Pty. Ltd. Unauthorised use or reproduction of this plan either wholly or in part without written permission infringes copyright. © Golder Associates Pty. Ltd.

CoM Property ID: 107482

69-71 Peel Street WEST MELBOURNE VIC 3003



LEGEND

 Parcel Boundary



Action Plan

EAO Recommendation

Apply EAO

EAO Comment

Historical industrial/commercial building with documented or likely past industrial use with possible high potential for contamination.

Site Use Summary

Current Land Use
Commercial

Historic Land Use
Commercial

Key Information Supporting EAO Decision

Unknown current or past industrial use identified on site.

Additional Considerations

Company name listed - 'Melbourne Towing Service'. Potential for offsite contamination from motor garage to the north.

Resources used to make decision



Resources used to make decision

West Melbourne Heritage Review Appendix 2 (May 2016), Site inspection, Historical aerial photographs (1968/9 & 1987)

WEST MELBOURNE EAO - AMENDMENT C309 -
WEST MELBOURNE STRUCTURE PLAN:
PRELIMINARY LAND CONTAMINATION ASSESSMENT

CITY OF MELBOURNE

GIS ID: 7463

COPYRIGHT

Aerial Imagery copyright
City of Melbourne

0 2.5 5 10 15 20 25 metres

SCALE (at A4) (BUILDING MAP) 1:500
DATUM GDA 94, PROJECTION MGA Zone 55

PROJECT: 18113718
DATE: 27 FEB 2019
DRAWN: TPC
CHECKED: IMK



Information contained on this drawing is the copyright of Golder Associates Pty. Ltd. Unauthorised use or reproduction of this plan either wholly or in part without written permission infringes copyright. © Golder Associates Pty. Ltd.

CoM Property ID: 107483

73-75 Peel Street WEST MELBOURNE VIC 3003



LEGEND

 Parcel Boundary



Action Plan

EAO Recommendation

Apply EAO

EAO Comment

Site has been identified as being potentially contaminated in accordance with the Potentially Contaminated Land General Practice Note (DSE, 2005)

Site Use Summary

Current Land Use
Commercial

Historic Land Use
Industrial

Key Information Supporting EAO Decision

Potentially contaminating land use/s identified on site as listed in the DSE General Practice Note (2005): Automotive repair/engine works

Additional Considerations

Resources used to make decision



Resources used to make decision

Site inspection, Historical aerial photographs (1968/9 & 1987), publicly available Melbourne street directories

WEST MELBOURNE EAO - AMENDMENT C309 -
WEST MELBOURNE STRUCTURE PLAN:
PRELIMINARY LAND CONTAMINATION ASSESSMENT

CITY OF MELBOURNE

GIS ID: 7464

COPYRIGHT

Aerial Imagery copyright
City of Melbourne

0 2.5 5 10 15 20 25 metres

SCALE (at A4) (BUILDING MAP) 1:500
DATUM GDA 94, PROJECTION MGA Zone 55

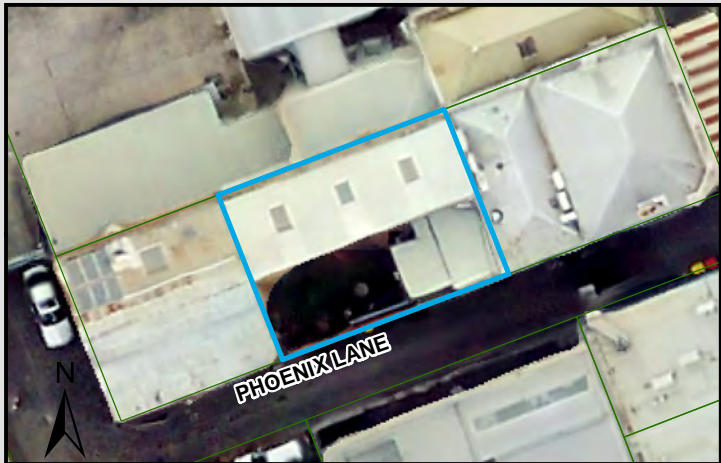
PROJECT: 18113718
DATE: 27 FEB 2019
DRAWN: TPC
CHECKED: IMK



Information contained on this drawing is the copyright of Golder Associates Pty. Ltd. Unauthorised use or reproduction of this plan either wholly or in part without written permission infringes copyright. © Golder Associates Pty. Ltd.

CoM Property ID: 107576

4-6 Phoenix Lane WEST MELBOURNE VIC 3003



LEGEND

 Parcel Boundary



Action Plan

EAO Recommendation

Apply EAO

EAO Comment

Site has been identified as being potentially contaminated in accordance with the Potentially Contaminated Land General Practice Note (DSE, 2005)

Site Use Summary

Current Land Use
Residential

Historic Land Use
Industrial

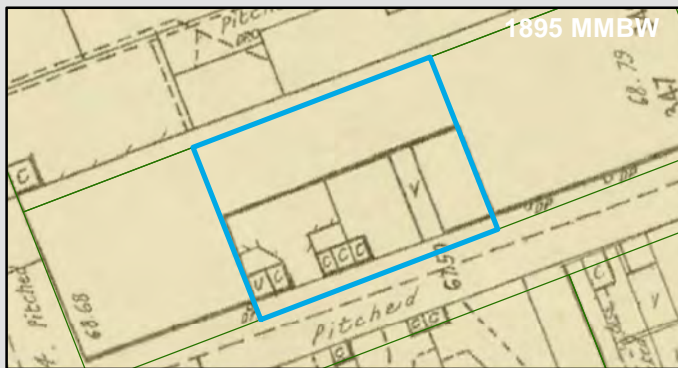
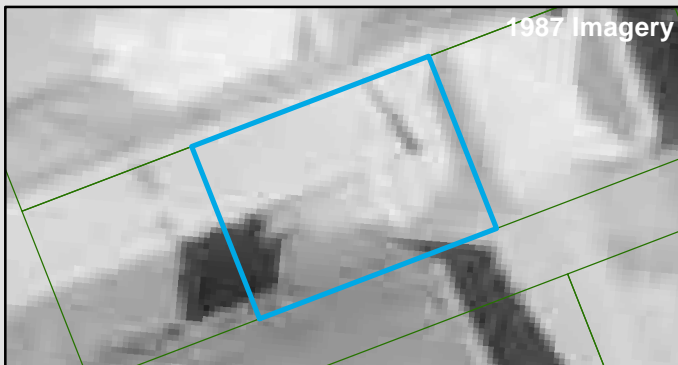
Key Information Supporting EAO Decision

Potentially contaminating land use/s identified on site as listed in the DSE General Practice Note (2005): Textile operations

Additional Considerations

Previously 'J. G. Thompson & Co. P. L.' wine and spirit merchants, and 'Phoenix Clothing Company' factory.

Resources used to make decision



Resources used to make decision

West Melbourne Heritage Review Appendix 2 (May 2016), Mahlstedt fire insurance maps (CBD 1923-25), Site inspection, Historical aerial photographs (1968/9 & 1987)

WEST MELBOURNE EAO - AMENDMENT C309 -
WEST MELBOURNE STRUCTURE PLAN:
PRELIMINARY LAND CONTAMINATION ASSESSMENT

CITY OF MELBOURNE

GIS ID: 8330

COPYRIGHT

Aerial Imagery copyright
City of Melbourne

0 2 4 8 12 16 20 metres

SCALE (at A4) (BUILDING MAP) 1:400
DATUM GDA 94, PROJECTION MGA Zone 55

PROJECT: 18113718
DATE: 27 FEB 2019
DRAWN: TPC
CHECKED: IMK



Information contained on this drawing is the copyright of Golder Associates Pty. Ltd. Unauthorised use or reproduction of this plan either wholly or in part without written permission infringes copyright. © Golder Associates Pty. Ltd.

CoM Property ID: 107577

8 Phoenix Lane WEST MELBOURNE VIC 3003



LEGEND

 Parcel Boundary



Action Plan

EAO Recommendation

Apply EAO

EAO Comment

Site has been identified as being potentially contaminated in accordance with the Potentially Contaminated Land General Practice Note (DSE, 2005)

Site Use Summary

Current Land Use
Residential

Historic Land Use
Industrial

Key Information Supporting EAO Decision

Potentially contaminating land use/s identified on site as listed in the DSE General Practice Note (2005): Textile operations

Additional Considerations

Previously 'J. G. Thompson & Co. P. L.' wine and spirit merchants, and 'Phoenix Clothing Company' factory.

Resources used to make decision



Resources used to make decision

West Melbourne Heritage Review Appendix 2 (May 2016), Mahlstedt fire insurance maps (CBD 1923-25), Site inspection, Historical aerial photographs (1968/9 & 1987)

WEST MELBOURNE EAO - AMENDMENT C309 -
WEST MELBOURNE STRUCTURE PLAN:
PRELIMINARY LAND CONTAMINATION ASSESSMENT

CITY OF MELBOURNE

GIS ID: 8331

COPYRIGHT

Aerial Imagery copyright
City of Melbourne

0 2 4 8 12 16 20 metres

SCALE (at A4) (BUILDING MAP) 1:400
DATUM GDA 94, PROJECTION MGA Zone 55

PROJECT: 18113718
DATE: 27 FEB 2019
DRAWN: TPC
CHECKED: IMK



Information contained on this drawing is the copyright of Golder Associates Pty. Ltd. Unauthorised use or reproduction of this plan either wholly or in part without written permission infringes copyright. © Golder Associates Pty. Ltd.

CoM Property ID: 108133

88-104 Railway Place WEST MELBOURNE VIC 3003



LEGEND

 Parcel Boundary



Action Plan

EAO Recommendation

Apply EAO

EAO Comment

Site has been issued with a Statement of Environmental Audit with Conditions that require ongoing management for sensitive uses. (Carms No. 32617-1)

Site Use Summary

Current Land Use
Residential

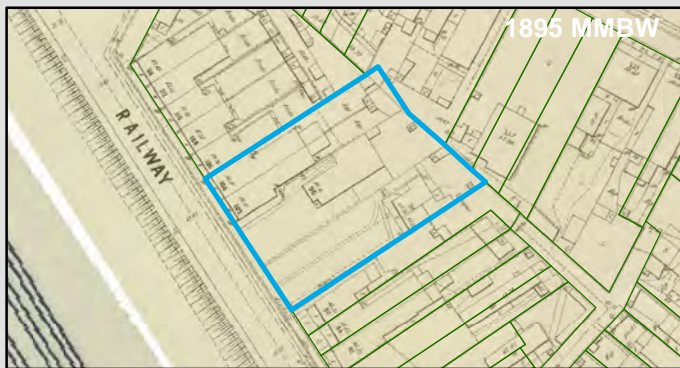
Historic Land Use
Industrial

Key Information Supporting EAO Decision

Additional Considerations

Warehouse conversion and subdivision 1999.

Resources used to make decision



Resources used to make decision

West Melbourne Heritage Review Appendix 2 (May 2016), Site inspection, Historical aerial photographs (1968/9 & 1987)

WEST MELBOURNE EAO - AMENDMENT C309 -
WEST MELBOURNE STRUCTURE PLAN:
PRELIMINARY LAND CONTAMINATION ASSESSMENT

CITY OF MELBOURNE

GIS ID: 6560

COPYRIGHT

Aerial Imagery copyright
City of Melbourne

0 5 10 20 30 40 50 metres

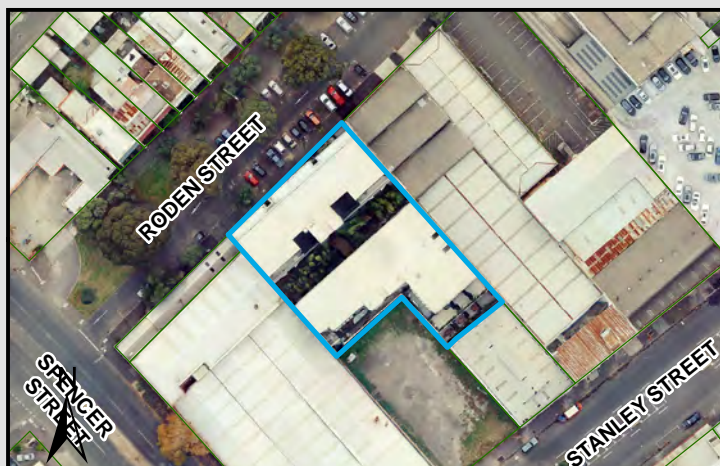
SCALE (at A4) (BUILDING MAP) 1:1,500
DATUM GDA 94, PROJECTION MGA Zone 55

PROJECT: 18113718
DATE: 27 FEB 2019
DRAWN: TPC
CHECKED: IMK



CoM Property ID: 108344

87-101 Roden Street WEST MELBOURNE VIC 3003



LEGEND

 Parcel Boundary



Action Plan

EAO Recommendation

Apply EAO

EAO Comment

Historical industrial/commercial building with documented or likely past industrial use with possible high potential for contamination.

Site Use Summary

Current Land Use
Residential

Historic Land Use
Commercial

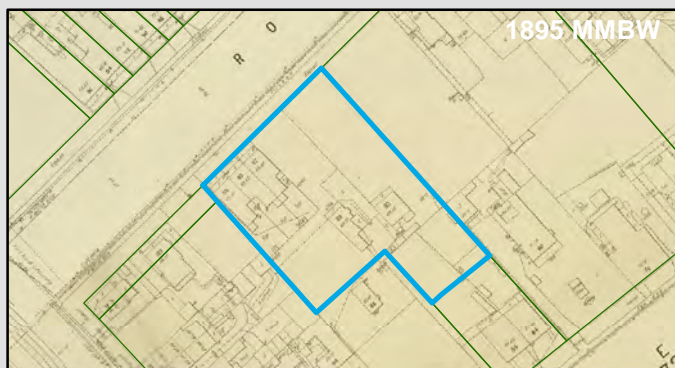
Key Information Supporting EAO Decision

Unknown current or past industrial use identified on site.

Additional Considerations

Previously a warehouse which was destroyed by a fire in 2007.

Resources used to make decision



Resources used to make decision

West Melbourne Heritage Review Appendix 2 (May 2016), Site inspection, Historical aerial photographs (1968/9 & 1987)

WEST MELBOURNE EAO - AMENDMENT C309 -
WEST MELBOURNE STRUCTURE PLAN:
PRELIMINARY LAND CONTAMINATION ASSESSMENT

CITY OF MELBOURNE

GIS ID: 7733

COPYRIGHT

Aerial Imagery copyright
City of Melbourne

0 5 10 20 30 40 50 metres

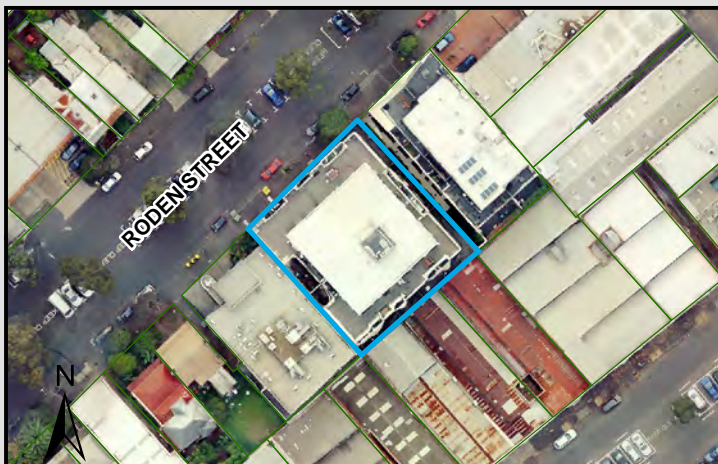
SCALE (at A4) (BUILDING MAP) 1:1,900
DATUM GDA 94, PROJECTION MGA Zone 55

PROJECT: 18113718
DATE: 27 FEB 2019
DRAWN: TPC
CHECKED: IMK



CoM Property ID: 108345

141-149 Roden Street WEST MELBOURNE VIC 3003



LEGEND

 Parcel Boundary



Action Plan

EAO Recommendation

Apply EAO

EAO Comment

Site has been issued with a Statement of Environmental Audit with Conditions that require ongoing management for sensitive uses. (Carms No. 68546-1)

Site Use Summary

Current Land Use
Residential

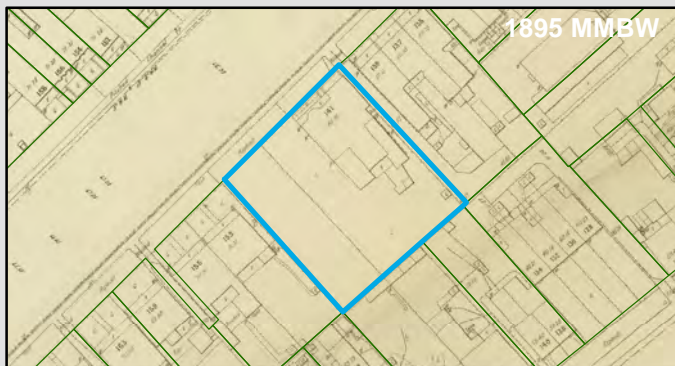
Historic Land Use
Industrial

Key Information Supporting EAO Decision

Potentially contaminating land use/s identified on site as listed in the DSE General Practice Note (2005): Service station/fuel storage

Additional Considerations

Resources used to make decision



Resources used to make decision

Site inspection, Historical aerial photographs (1968/9 & 1987), EPA Audits (53X and 53V)

WEST MELBOURNE EAO - AMENDMENT C309 -
WEST MELBOURNE STRUCTURE PLAN:
PRELIMINARY LAND CONTAMINATION ASSESSMENT

CITY OF MELBOURNE

GIS ID: 6695

COPYRIGHT

Aerial Imagery copyright
City of Melbourne

0 5 10 20 30 40 50 metres

SCALE (at A4) (BUILDING MAP) 1:1,500
DATUM GDA 94, PROJECTION MGA Zone 55

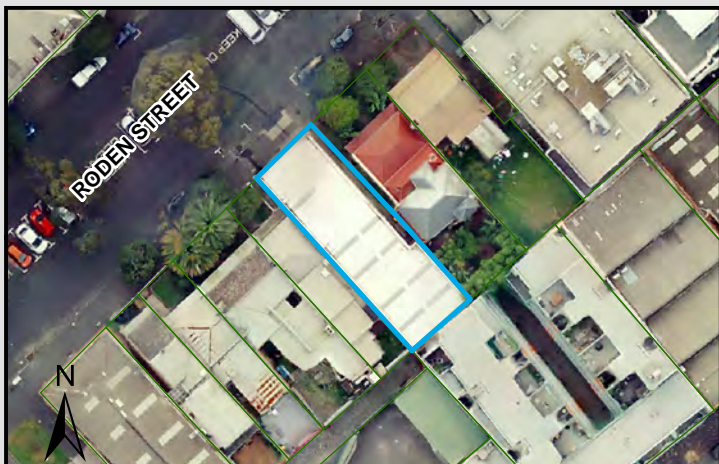
PROJECT: 18113718
DATE: 27 FEB 2019
DRAWN: TPC
CHECKED: IMK



Information contained on this drawing is the copyright of Golder Associates Pty. Ltd. Unauthorised use or reproduction of this plan either wholly or in part without written permission infringes copyright. © Golder Associates Pty. Ltd.

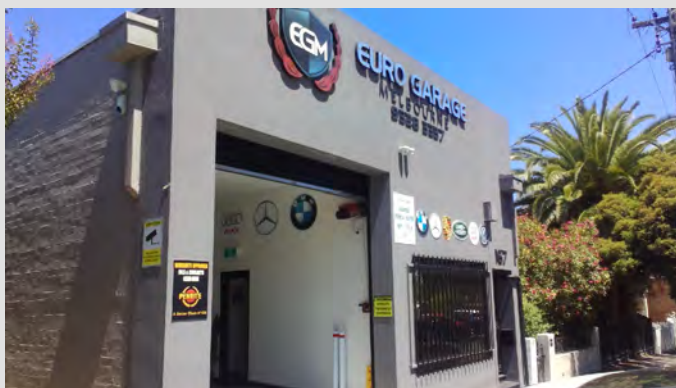
CoM Property ID: 108349

167-169 Roden Street WEST MELBOURNE VIC 3003



LEGEND

 Parcel Boundary



Action Plan

EAO Recommendation

Apply EAO

EAO Comment

Site has been identified as being potentially contaminated in accordance with the Potentially Contaminated Land General Practice Note (DSE, 2005)

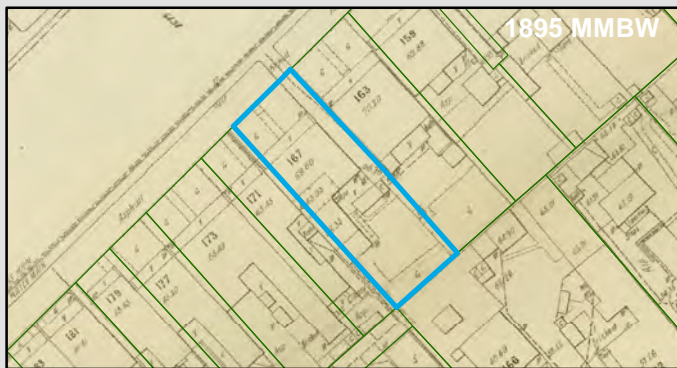
Resources used to make decision



Site Use Summary

Current Land Use
Industrial

Historic Land Use
Industrial



Key Information Supporting EAO Decision

Potentially contaminating land use/s identified on site as listed in the DSE General Practice Note (2005): Automotive repair/engine works

Additional Considerations

Resources used to make decision

Site inspection, Historical aerial photographs (1968/9 & 1987), MMBW Maps (1895)

WEST MELBOURNE EAO - AMENDMENT C309 -
WEST MELBOURNE STRUCTURE PLAN:
PRELIMINARY LAND CONTAMINATION ASSESSMENT

CITY OF MELBOURNE

GIS ID: 6659

COPYRIGHT

Aerial Imagery copyright
City of Melbourne

0 5 10 20 30 40 50 metres

SCALE (at A4) (BUILDING MAP) 1:1,000
DATUM GDA 94, PROJECTION MGA Zone 55

PROJECT: 18113718
DATE: 27 FEB 2019
DRAWN: TPC
CHECKED: IMK



CoM Property ID: 108350

171 Roden Street WEST MELBOURNE VIC 3003



LEGEND

 Parcel Boundary



Action Plan

EAO Recommendation

Apply EAO

EAO Comment

Site is subject to potential contamination from an offsite source.

Site Use Summary

Current Land Use
Residential

Historic Land Use
Residential

Key Information Supporting EAO Decision

Research indicates this site has currently and previously been used for residential purposes.

Additional Considerations

Resources used to make decision



Resources used to make decision

Site Inspection,
MMBW Maps (1895),
Historical aerial photographs,
Current aerial photographs (May 2018)

WEST MELBOURNE EAO - AMENDMENT C309 -
WEST MELBOURNE STRUCTURE PLAN:
PRELIMINARY LAND CONTAMINATION ASSESSMENT

CITY OF MELBOURNE

GIS ID: 6660

COPYRIGHT

Aerial Imagery copyright
City of Melbourne

0 4.5 9 18 27 36 45 metres

SCALE (at A4) (BUILDING MAP) 1:900
DATUM GDA 94, PROJECTION MGA Zone 55

PROJECT: 18113718
DATE: 27 FEB 2019
DRAWN: TPC
CHECKED: IMK



CoM Property ID: 108358

205-211 Roden Street WEST MELBOURNE VIC 3003



LEGEND

 Parcel Boundary



Action Plan

EAO Recommendation

Apply EAO

EAO Comment

Historical industrial/commercial building with documented or likely past industrial use with possible high potential for contamination.

Site Use Summary

Current Land Use
Commercial

Historic Land Use
Industrial

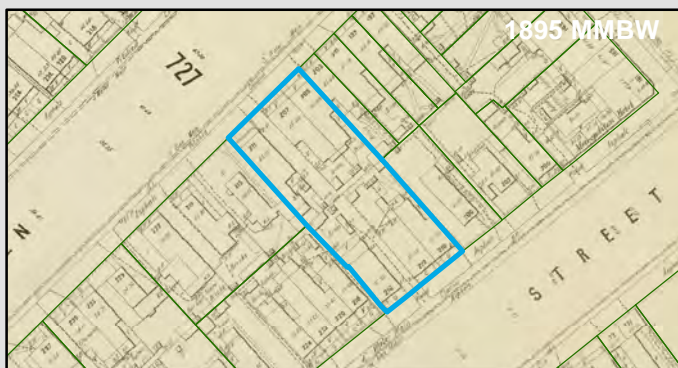
Key Information Supporting EAO Decision

Unknown current or past industrial use identified on site.

Additional Considerations

Brick warehouse built in the 1930's, unknown use. Building currently unoccupied.

Resources used to make decision



Resources used to make decision

West Melbourne Heritage Review Appendix 2 (May 2016), Site inspection, Historical aerial photographs (1968/9 & 1987), City of Melbourne interactive map (2019)

WEST MELBOURNE EAO - AMENDMENT C309 -
WEST MELBOURNE STRUCTURE PLAN:
PRELIMINARY LAND CONTAMINATION ASSESSMENT

CITY OF MELBOURNE

GIS ID: 6616

COPYRIGHT

Aerial Imagery copyright
City of Melbourne

0 5 10 20 30 40 50 metres

SCALE (at A4) (BUILDING MAP) 1:1,600
DATUM GDA 94, PROJECTION MGA Zone 55

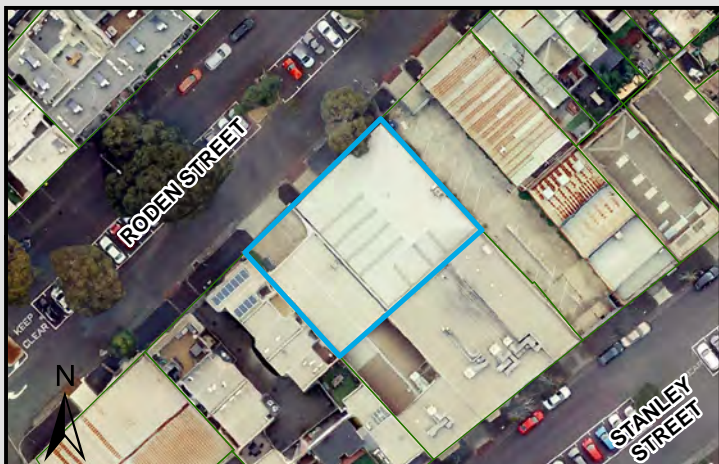
PROJECT: 18113718
DATE: 27 FEB 2019
DRAWN: TPC
CHECKED: IMK



Information contained on this drawing is the copyright of Golder Associates Pty. Ltd. Unauthorised use or reproduction of this plan either wholly or in part without written permission infringes copyright. © Golder Associates Pty. Ltd.

CoM Property ID: 108359

213-225 Roden Street WEST MELBOURNE VIC 3003



LEGEND

 Parcel Boundary



Action Plan

EAO Recommendation

Apply EAO

EAO Comment

Historical industrial/commercial building with documented or likely past industrial use with possible high potential for contamination.

Site Use Summary

Current Land Use
Commercial

Historic Land Use
Industrial

Key Information Supporting EAO Decision

Unknown current or past industrial use identified on site.

Additional Considerations

Brick factory, built in the early 1970's. 1895 indicates buildings not likely residential. 1987 indicate current buildings onsite.

Resources used to make decision



Resources used to make decision

Site Inspection,
MMBW Maps (1895),
Historical aerial photographs,
Current aerial photographs (May 2018)

WEST MELBOURNE EAO - AMENDMENT C309 -
WEST MELBOURNE STRUCTURE PLAN:
PRELIMINARY LAND CONTAMINATION ASSESSMENT

CITY OF MELBOURNE

GIS ID: 6617

COPYRIGHT

Aerial Imagery copyright
City of Melbourne

0 5 10 20 30 40 50 metres

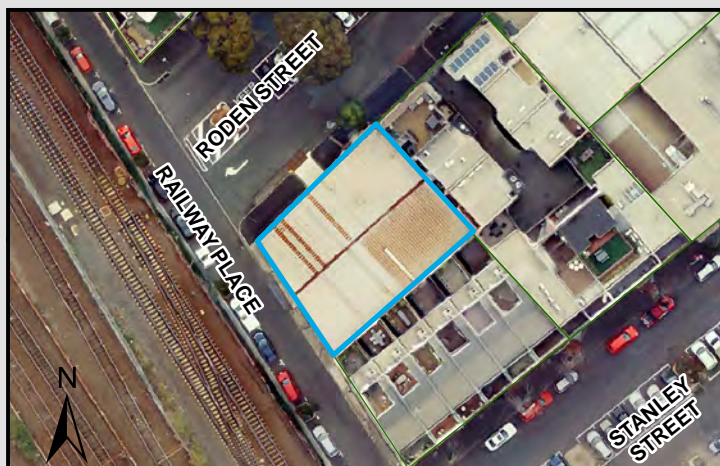
SCALE (at A4) (BUILDING MAP) 1:1,200
DATUM GDA 94, PROJECTION MGA Zone 55

PROJECT: 18113718
DATE: 27 FEB 2019
DRAWN: TPC
CHECKED: IMK



CoM Property ID: 108361

237-245 Roden Street WEST MELBOURNE VIC 3003



LEGEND

 Parcel Boundary



Action Plan

EAO Recommendation

Apply EAO

EAO Comment

Historical industrial/commercial building with documented or likely past industrial use with possible high potential for contamination.

Site Use Summary

Current Land Use
Commercial

Historic Land Use
Other (unsure)

Key Information Supporting EAO Decision

Unknown current or past industrial use identified on site.

Additional Considerations

1987 aerial shows warehouse onsite, unknown use. Currently occupied by "Endorsed Carriers and Storers".

Resources used to make decision



Resources used to make decision

Site inspection, Historical aerial photographs (1968/9 & 1987), MMBW Maps (1895)

WEST MELBOURNE EAO - AMENDMENT C309 -
WEST MELBOURNE STRUCTURE PLAN:
PRELIMINARY LAND CONTAMINATION ASSESSMENT

CITY OF MELBOURNE

GIS ID: 6618

COPYRIGHT

Aerial Imagery copyright
City of Melbourne

0 5 10 20 30 40 50 metres

SCALE (at A4) (BUILDING MAP) 1:1,100
DATUM GDA 94, PROJECTION MGA Zone 55

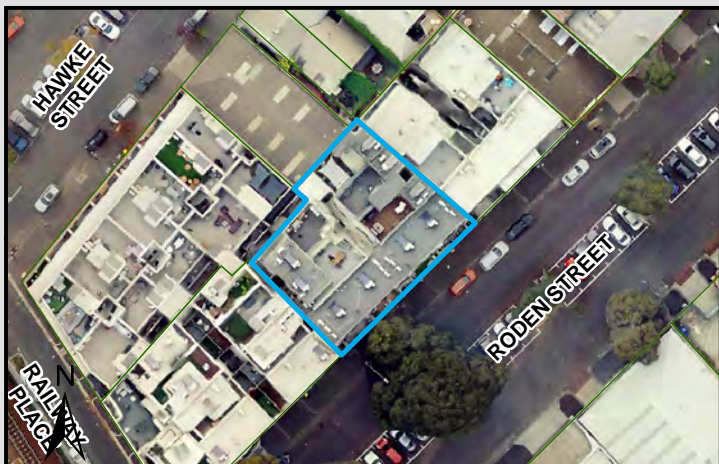
PROJECT: 18113718
DATE: 27 FEB 2019
DRAWN: TPC
CHECKED: IMK



Information contained on this drawing is the copyright of Golder Associates Pty. Ltd. Unauthorised use or reproduction of this plan either wholly or in part without written permission infringes copyright. © Golder Associates Pty. Ltd.

CoM Property ID: 108363

220-228 Roden Street WEST MELBOURNE VIC 3003



LEGEND

 Parcel Boundary



Action Plan

EAO Recommendation

Apply EAO

EAO Comment

Site has been issued with a Statement of Environmental Audit with Conditions that require ongoing management for sensitive uses. (Carms No. 63691-1)

Resources used to make decision



Site Use Summary

Current Land Use
Residential

Historic Land Use
Industrial



Key Information Supporting EAO Decision

Potentially contaminating land use/s identified on site as listed in the DSE General Practice Note (2005): Shipping facilities - Bulk (Rate <100 t/day)

Additional Considerations

Former warehouse for Aviation Engineering Supplies and Central Bearings Distributors.

Resources used to make decision

Site inspection, Historical aerial photographs (1968/9 & 1987), EPA Audits (53X and 53V)

WEST MELBOURNE EAO - AMENDMENT C309 -
WEST MELBOURNE STRUCTURE PLAN:
PRELIMINARY LAND CONTAMINATION ASSESSMENT

CITY OF MELBOURNE

GIS ID: 6571

COPYRIGHT

Aerial Imagery copyright
City of Melbourne

0 5 10 20 30 40 50 metres

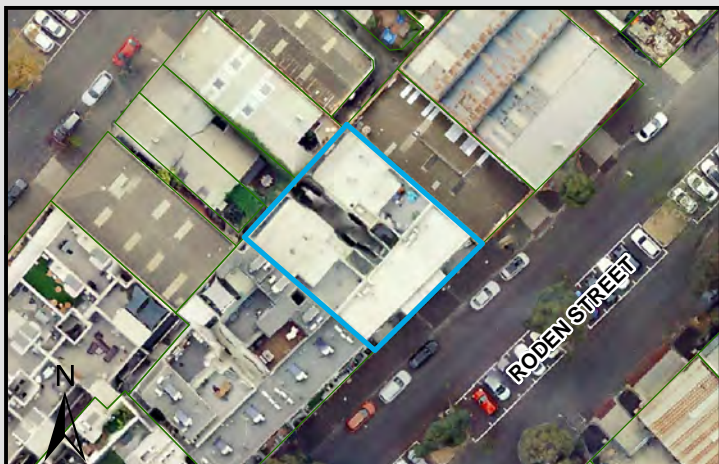
SCALE (at A4) (BUILDING MAP) 1:1,100
DATUM GDA 94, PROJECTION MGA Zone 55

PROJECT: 18113718
DATE: 27 FEB 2019
DRAWN: TPC
CHECKED: IMK



CoM Property ID: 108364

212-218 Roden Street WEST MELBOURNE VIC 3003



LEGEND

 Parcel Boundary



Action Plan

EAO Recommendation

Apply EAO

EAO Comment

Site has been issued with a Statement of Environmental Audit with Conditions that require ongoing management for sensitive uses. (Carms No. 63014-1)

Site Use Summary

Current Land Use
Residential

Historic Land Use
Industrial

Key Information Supporting EAO Decision

Potentially contaminating land use/s identified on site as listed in the DSE General Practice Note (2005): Iron and steel works

Additional Considerations

Resources used to make decision



Resources used to make decision

Site inspection, Historical aerial photographs (1968/9 & 1987), EPA Audits (53X and 53V)

WEST MELBOURNE EAO - AMENDMENT C309 -
WEST MELBOURNE STRUCTURE PLAN:
PRELIMINARY LAND CONTAMINATION ASSESSMENT

CITY OF MELBOURNE

GIS ID: 6572

COPYRIGHT

Aerial Imagery copyright
City of Melbourne

0 5 10 20 30 40 50 metres

SCALE (at A4) (BUILDING MAP) 1:1,000
DATUM GDA 94, PROJECTION MGA Zone 55

PROJECT: 18113718
DATE: 27 FEB 2019
DRAWN: TPC
CHECKED: IMK



Information contained on this drawing is the copyright of Golder Associates Pty. Ltd. Unauthorised use or reproduction of this plan either wholly or in part without written permission infringes copyright. © Golder Associates Pty. Ltd.

CoM Property ID: 108365

208-210 Roden Street WEST MELBOURNE VIC 3003



LEGEND

 Parcel Boundary



Action Plan

EAO Recommendation

Apply EAO

EAO Comment

Historical industrial/commercial building with documented or likely past industrial use with possible high potential for contamination.

Resources used to make decision



Site Use Summary

Current Land Use
Commercial

Historic Land Use
Industrial



Key Information Supporting EAO Decision

Unknown current or past industrial use identified on site.

Additional Considerations

Resources used to make decision

West Melbourne Heritage Review Appendix 2 (May 2016), Site inspection, Historical aerial photographs (1968/9 & 1987)

WEST MELBOURNE EAO - AMENDMENT C309 -
WEST MELBOURNE STRUCTURE PLAN:
PRELIMINARY LAND CONTAMINATION ASSESSMENT

CITY OF MELBOURNE

GIS ID: 6573

COPYRIGHT

Aerial Imagery copyright
City of Melbourne

0 4 8 16 24 32 40 metres

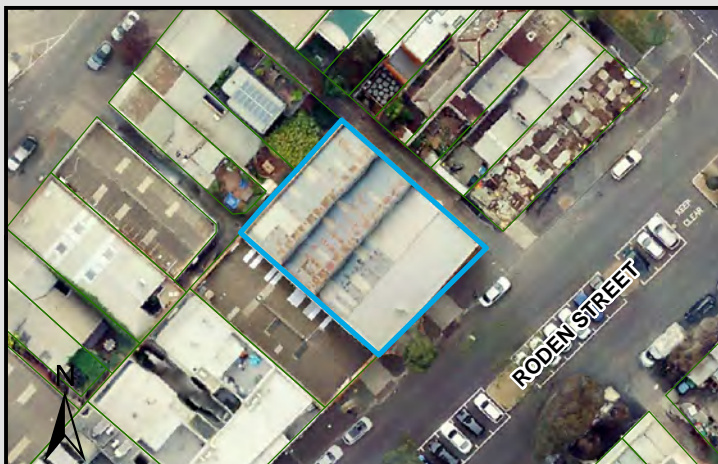
SCALE (at A4) (BUILDING MAP) 1:800
DATUM GDA 94, PROJECTION MGA Zone 55

PROJECT: 18113718
DATE: 27 FEB 2019
DRAWN: TPC
CHECKED: IMK



CoM Property ID: 108366

198-206 Roden Street WEST MELBOURNE VIC 3003



LEGEND

 Parcel Boundary



Action Plan

EAO Recommendation

Apply EAO

EAO Comment

Site has been identified as being potentially contaminated in accordance with the Potentially Contaminated Land General Practice Note (DSE, 2005)

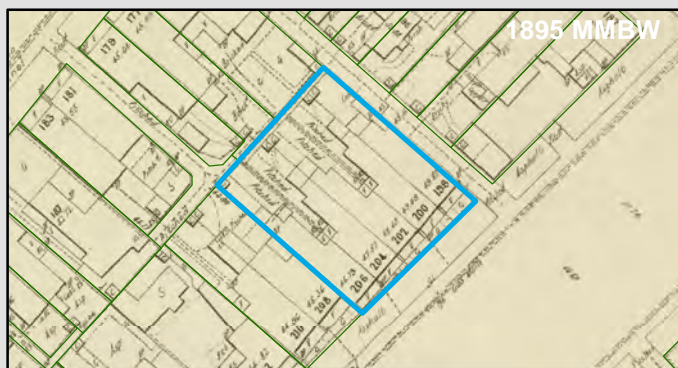
Resources used to make decision



Site Use Summary

Current Land Use
Industrial

Historic Land Use
Industrial



Key Information Supporting EAO Decision

Potentially contaminating land use/s identified on site as listed in the DSE General Practice Note (2005): Underground storage tank (Medium Potential)

Additional Considerations

UST or Filling at the site indicates potential for contamination.

Resources used to make decision

Site inspection, Historical aerial photographs (1968/9 & 1987)

WEST MELBOURNE EAO - AMENDMENT C309 -
WEST MELBOURNE STRUCTURE PLAN:
PRELIMINARY LAND CONTAMINATION ASSESSMENT

CITY OF MELBOURNE

GIS ID: 6574

COPYRIGHT

Aerial Imagery copyright
City of Melbourne

0 5 10 20 30 40 50 metres

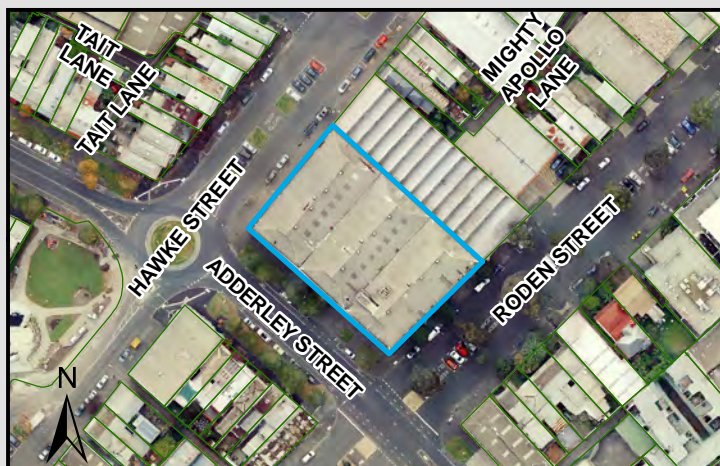
SCALE (at A4) (BUILDING MAP) 1:1,000
DATUM GDA 94, PROJECTION MGA Zone 55

PROJECT: 18113718
DATE: 27 FEB 2019
DRAWN: TPC
CHECKED: IMK



CoM Property ID: 108367

172-184 Roden Street WEST MELBOURNE VIC 3003



LEGEND

 Parcel Boundary



Action Plan

EAO Recommendation

Apply EAO

EAO Comment

Site has been identified as being potentially contaminated in accordance with the Potentially Contaminated Land General Practice Note (DSE, 2005)

Site Use Summary

Current Land Use

Industrial

Historic Land Use

Industrial

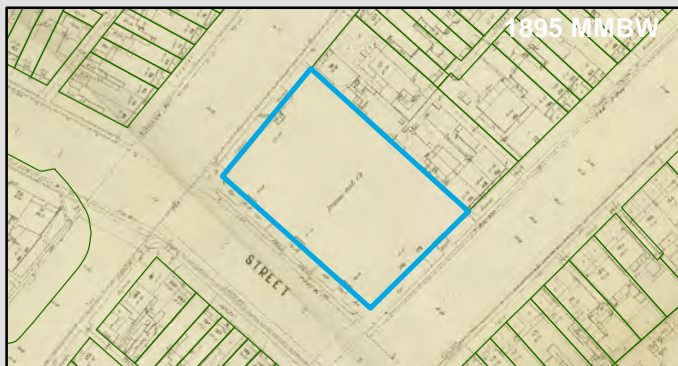
Key Information Supporting EAO Decision

Potentially contaminating land use/s identified on site as listed in the DSE General Practice Note (2005): Automotive repair/engine works, Iron and steel works

Additional Considerations

Formerly 'Briscoe and Co ironmongers warehouse'.

Resources used to make decision



Resources used to make decision

West Melbourne Heritage Review Appendix 2 (May 2016), Site inspection, Historical aerial photographs (1968/9 & 1987), MMBW Maps (1895)

WEST MELBOURNE EAO - AMENDMENT C309 -
WEST MELBOURNE STRUCTURE PLAN:
PRELIMINARY LAND CONTAMINATION ASSESSMENT

CITY OF MELBOURNE

GIS ID: 6601

COPYRIGHT

Aerial Imagery copyright
City of Melbourne

0 10 20 40 60 80 100 metres

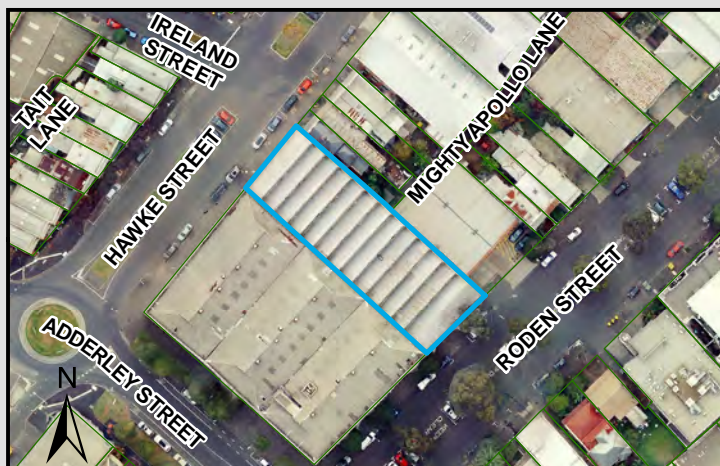
SCALE (at A4) (BUILDING MAP) 1:2,300
DATUM GDA 94, PROJECTION MGA Zone 55

PROJECT: 18113718
DATE: 27 FEB 2019
DRAWN: TPC
CHECKED: IMK



CoM Property ID: 108368

164-170 Roden Street WEST MELBOURNE VIC 3003



LEGEND

 Parcel Boundary



Action Plan

EAO Recommendation

Apply EAO

EAO Comment

Historical industrial/commercial building with documented or likely past industrial use with possible high potential for contamination.

Site Use Summary

Current Land Use

Industrial

Historic Land Use

Commercial

Key Information Supporting EAO Decision

Unknown current or past industrial use identified on site.

Additional Considerations

Company name listed - Briscoe and Co ironmongers warehouse'.

Resources used to make decision



Resources used to make decision

West Melbourne Heritage Review Appendix 2 (May 2016), Site inspection, Historical aerial photographs (1968/9 & 1987), MMBW Maps (1895)

WEST MELBOURNE EAO - AMENDMENT C309 -
WEST MELBOURNE STRUCTURE PLAN:
PRELIMINARY LAND CONTAMINATION ASSESSMENT

CITY OF MELBOURNE

GIS ID: 6602

COPYRIGHT

Aerial Imagery copyright
City of Melbourne

0 5 10 20 30 40 50 metres

SCALE (at A4) (BUILDING MAP) 1:1,900
DATUM GDA 94, PROJECTION MGA Zone 55

PROJECT: 18113718
DATE: 27 FEB 2019
DRAWN: TPC
CHECKED: IMK



Information contained on this drawing is the copyright of Golder Associates Pty. Ltd. Unauthorised use or reproduction of this plan either wholly or in part without written permission infringes copyright. © Golder Associates Pty. Ltd.

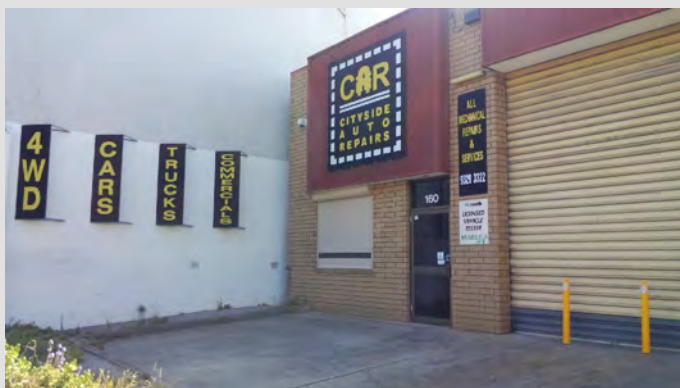
CoM Property ID: 108369

158-162 Roden Street WEST MELBOURNE VIC 3003



LEGEND

 Parcel Boundary



Action Plan

EAO Recommendation

Apply EAO

EAO Comment

Site has been identified as being potentially contaminated in accordance with the Potentially Contaminated Land General Practice Note (DSE, 2005)

Site Use Summary

Current Land Use
Industrial

Historic Land Use
Industrial

Key Information Supporting EAO Decision

Potentially contaminating land use/s identified on site as listed in the DSE General Practice Note (2005): Automotive repair/engine works

Additional Considerations

Resources used to make decision



Resources used to make decision

Site inspection, Historical aerial photographs (1968/9 & 1987), MMBW Maps (1895)

WEST MELBOURNE EAO - AMENDMENT C309 -
WEST MELBOURNE STRUCTURE PLAN:
PRELIMINARY LAND CONTAMINATION ASSESSMENT

CITY OF MELBOURNE

GIS ID: 6603

COPYRIGHT

Aerial Imagery copyright
City of Melbourne

0 5 10 20 30 40 50 metres

SCALE (at A4) (BUILDING MAP) 1:1,100
DATUM GDA 94, PROJECTION MGA Zone 55

PROJECT: 18113718
DATE: 27 FEB 2019
DRAWN: TPC
CHECKED: IMK



GOLDER

CoM Property ID: 108374

142-146 Roden Street WEST MELBOURNE VIC 3003



LEGEND

 Parcel Boundary



Action Plan

EAO Recommendation

Apply EAO

EAO Comment

Historical industrial/commercial building with documented or likely past industrial use with possible high potential for contamination.

Site Use Summary

Current Land Use
Commercial

Historic Land Use
Residential

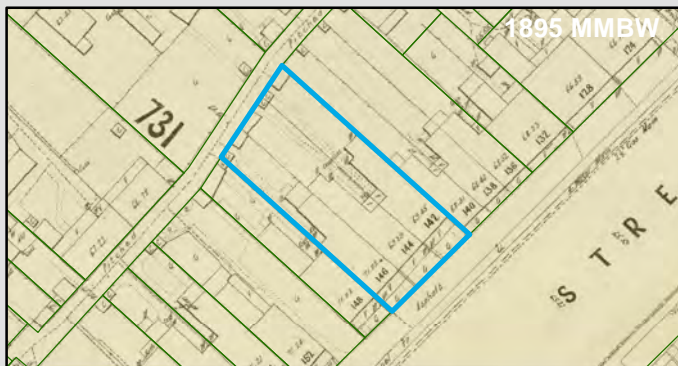
Key Information Supporting EAO Decision

Unknown current or past industrial use identified on site.

Additional Considerations

1895 plan and 1969 aerials indicate residential. 1987 aerial indicates current building onsite.

Resources used to make decision



Resources used to make decision

Site Inspection,
MMBW Maps (1895),
Historical aerial photographs,
Current aerial photographs (May 2018)

WEST MELBOURNE EAO - AMENDMENT C309 -
WEST MELBOURNE STRUCTURE PLAN:
PRELIMINARY LAND CONTAMINATION ASSESSMENT

CITY OF MELBOURNE

GIS ID: 6608

COPYRIGHT

Aerial Imagery copyright
City of Melbourne

0 5 10 20 30 40 50 metres

SCALE (at A4) (BUILDING MAP) 1:1,100
DATUM GDA 94, PROJECTION MGA Zone 55

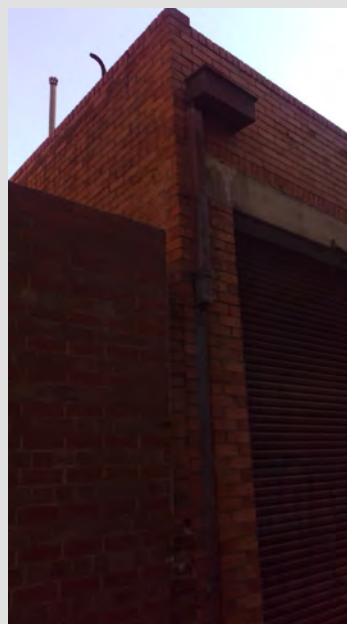
PROJECT: 18113718
DATE: 27 FEB 2019
DRAWN: TPC
CHECKED: IMK



Information contained on this drawing is the copyright of Golder Associates Pty. Ltd. Unauthorised use or reproduction of this plan either wholly or in part without written permission infringes copyright. © Golder Associates Pty. Ltd.

CoM Property ID: 108375

136-140 Roden Street WEST MELBOURNE VIC 3003



LEGEND

 Parcel Boundary

Action Plan

EAO Recommendation

Apply EAO

EAO Comment

Historical industrial/commercial building with documented or likely past industrial use with possible high potential for contamination.

Site Use Summary

Current Land Use
Commercial

Historic Land Use
Residential

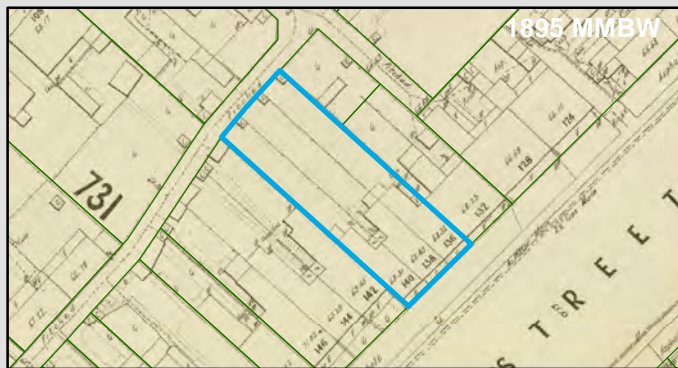
Key Information Supporting EAO Decision

Unknown current or past industrial use identified on site.

Additional Considerations

1895 and 1969 aeriels indicate residential. Currently used as a warehouse. Unusual exhaust vent from roof.

Resources used to make decision



Resources used to make decision

City of Melbourne interactive map (2019), Site Inspection, MMBW Maps (1895), Historical aerial photographs, Current aerial photographs (May 2018)

WEST MELBOURNE EAO - AMENDMENT C309 -
WEST MELBOURNE STRUCTURE PLAN:
PRELIMINARY LAND CONTAMINATION ASSESSMENT

CITY OF MELBOURNE

GIS ID: 6609

COPYRIGHT

Aerial Imagery copyright
City of Melbourne

0 5 10 20 30 40 50 metres

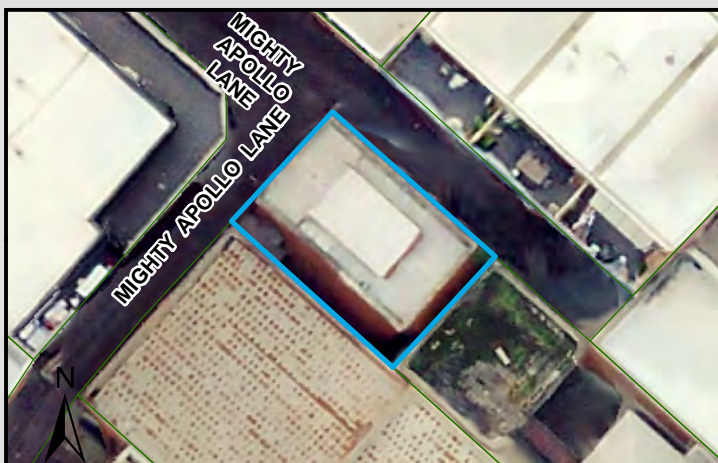
SCALE (at A4) (BUILDING MAP) 1:1,100
DATUM GDA 94, PROJECTION MGA Zone 55

PROJECT: 18113718
DATE: 27 FEB 2019
DRAWN: TPC
CHECKED: IMK



CoM Property ID: 108377

Substation Rear 132 Roden Street WEST MELBOURNE VIC 3003



LEGEND

 Parcel Boundary

Action Plan

EAO Recommendation

Apply EAO

EAO Comment

Site has been identified as being potentially contaminated in accordance with the Potentially Contaminated Land General Practice Note (DSE, 2005)

Site Use Summary

Current Land Use
Industrial

Historic Land Use
Industrial

Key Information Supporting EAO Decision

Potentially contaminating land use/s identified on site as listed in the DSE General Practice Note (2005): Electricity generation/power Station

Additional Considerations

Substation on site.

Resources used to make decision



Resources used to make decision

Site inspection, Historical aerial photographs (1968/9 & 1987), MMBW Maps (1895)

WEST MELBOURNE EAO - AMENDMENT C309 -
WEST MELBOURNE STRUCTURE PLAN:
PRELIMINARY LAND CONTAMINATION ASSESSMENT

CITY OF MELBOURNE

GIS ID: 6700

COPYRIGHT

Aerial Imagery copyright
City of Melbourne

0 2 4 8 12 16 20 metres

SCALE (at A4) (BUILDING MAP) 1:400
DATUM GDA 94, PROJECTION MGA Zone 55

PROJECT: 18113718
DATE: 27 FEB 2019
DRAWN: TPC
CHECKED: IMK



CoM Property ID: 108409

93-99 Rosslyn Street WEST MELBOURNE VIC 3003



LEGEND

 Parcel Boundary

Action Plan

EAO Recommendation

Apply EAO

EAO Comment

Historical industrial/commercial building with documented or likely past industrial use with possible high potential for contamination.

Site Use Summary

Current Land Use
Commercial

Historic Land Use
Industrial

Key Information Supporting EAO Decision

Unknown current or past industrial use identified on site.

Additional Considerations

Aerials show a saw tooth roof on site, which indicates likely past industrial use

Resources used to make decision



Resources used to make decision

Site inspection, Historical aerial photographs (1968/9 & 1987)

WEST MELBOURNE EAO - AMENDMENT C309 -
WEST MELBOURNE STRUCTURE PLAN:
PRELIMINARY LAND CONTAMINATION ASSESSMENT

CITY OF MELBOURNE

GIS ID: 7792

COPYRIGHT

Aerial Imagery copyright
City of Melbourne

0 10 20 40 60 80 100 metres

SCALE (at A4) (BUILDING MAP) 1:2,000
DATUM GDA 94, PROJECTION MGA Zone 55

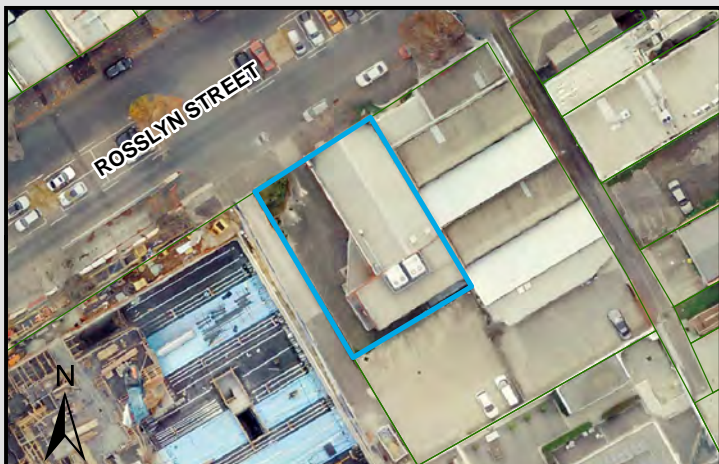
PROJECT: 18113718
DATE: 27 FEB 2019
DRAWN: TPC
CHECKED: IMK



Information contained on this drawing is the copyright of Golder Associates Pty. Ltd. Unauthorised use or reproduction of this plan either wholly or in part without written permission infringes copyright. © Golder Associates Pty. Ltd.

CoM Property ID: 108410

101-107 Rosslyn Street WEST MELBOURNE VIC 3003



LEGEND

 Parcel Boundary



Action Plan

EAO Recommendation

Apply EAO

EAO Comment

Site has been identified as being potentially contaminated in accordance with the Potentially Contaminated Land General Practice Note (DSE, 2005)

Resources used to make decision



Site Use Summary

Current Land Use
Industrial

Historic Land Use
Industrial

Key Information Supporting EAO Decision

Potentially contaminating land use/s identified on site as listed in the DSE General Practice Note (2005): Printing shops



Additional Considerations

Resources used to make decision

Site inspection, Historical aerial photographs (1968/9 & 1987), MMBW Maps (1895)

WEST MELBOURNE EAO - AMENDMENT C309 -
WEST MELBOURNE STRUCTURE PLAN:
PRELIMINARY LAND CONTAMINATION ASSESSMENT

CITY OF MELBOURNE

GIS ID: 7793

COPYRIGHT

Aerial Imagery copyright
City of Melbourne

0 5 10 20 30 40 50 metres

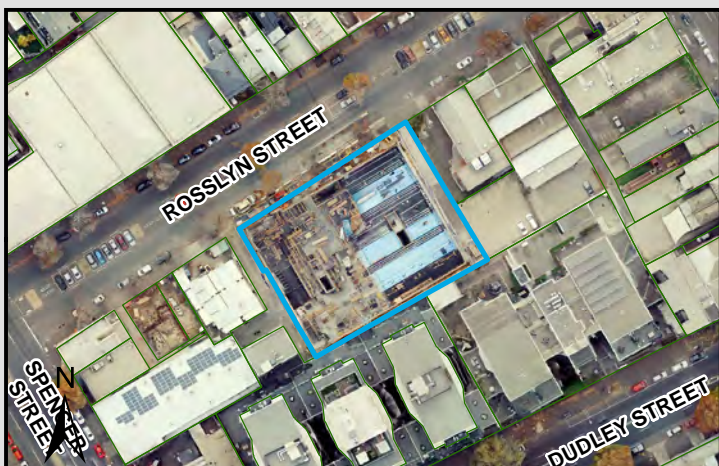
SCALE (at A4) (BUILDING MAP) 1:1,100
DATUM GDA 94, PROJECTION MGA Zone 55

PROJECT: 18113718
DATE: 27 FEB 2019
DRAWN: TPC
CHECKED: IMK



CoM Property ID: 108411

109-133 Rosslyn Street WEST MELBOURNE VIC 3003



LEGEND

 Parcel Boundary

Action Plan

EAO Recommendation

Apply EAO

EAO Comment

Site has been identified as being potentially contaminated in accordance with the Potentially Contaminated Land General Practice Note (DSE, 2005)

Site Use Summary

Current Land Use

Other (unsure)

Historic Land Use

Industrial

Key Information Supporting EAO Decision

Potentially contaminating land use/s identified on site as listed in the DSE General Practice Note (2005): Automotive repair/engine works, Chemical Manufacturing/storage/blending

Additional Considerations

Former Dixon and Co. cordial factory, Felton Grimwade and Duerdins chemical laboratory, and motor garage.

Resources used to make decision



Resources used to make decision

West Melbourne Heritage Review Appendix 2 (May 2016), Publicly available Melbourne Street Directories (Yellow Pages 1990, Urban Business Directory 1975/6 & 1984), Site inspection, Historical aerial photographs (1968/9 & 1987)

WEST MELBOURNE EAO - AMENDMENT C309 -
WEST MELBOURNE STRUCTURE PLAN:
PRELIMINARY LAND CONTAMINATION ASSESSMENT

CITY OF MELBOURNE

GIS ID: 7794

COPYRIGHT

Aerial Imagery copyright
City of Melbourne

0 10 20 40 60 80 100 metres

SCALE (at A4) (BUILDING MAP) 1:2,200
DATUM GDA 94, PROJECTION MGA Zone 55

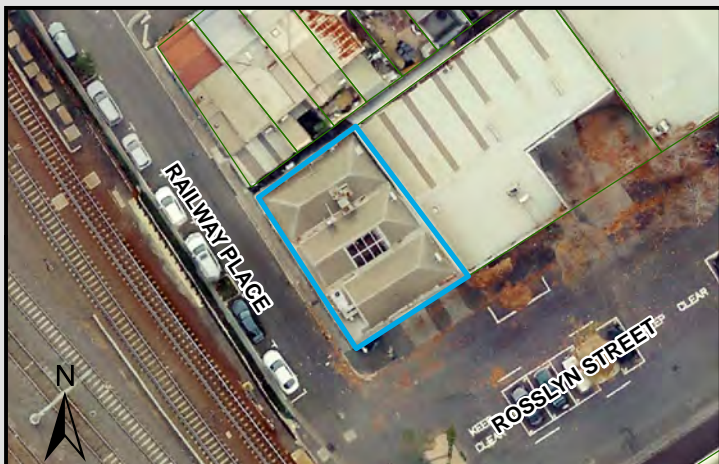
PROJECT: 18113718
DATE: 27 FEB 2019
DRAWN: TPC
CHECKED: IMK



Information contained on this drawing is the copyright of Golder Associates Pty. Ltd. Unauthorised use or reproduction of this plan either wholly or in part without written permission infringes copyright. © Golder Associates Pty. Ltd.

CoM Property ID: 108414

298-302 Rosslyn Street WEST MELBOURNE VIC 3003



LEGEND

 Parcel Boundary



Action Plan

EAO Recommendation

Apply EAO

EAO Comment

Site has been identified as being potentially contaminated in accordance with the Potentially Contaminated Land General Practice Note (DSE, 2005)

Resources used to make decision



Site Use Summary

Current Land Use
Commercial

Historic Land Use
Industrial



Key Information Supporting EAO Decision

Potentially contaminating land use/s identified on site as listed in the DSE General Practice Note (2005): Chemical Manufacturing/storage/blending

Additional Considerations

Formerly Turner and Co. sauce manufacturers, followed by manufacturing chemists.

Resources used to make decision

Site Inspection,
MMBW Maps (1895),
Historical aerial photographs,
Current aerial photographs (May 2018)

WEST MELBOURNE EAO - AMENDMENT C309 -
WEST MELBOURNE STRUCTURE PLAN:
PRELIMINARY LAND CONTAMINATION ASSESSMENT

CITY OF MELBOURNE

GIS ID: 6647

COPYRIGHT

Aerial Imagery copyright
City of Melbourne

0 4 8 16 24 32 40 metres

SCALE (at A4) (BUILDING MAP) 1:800
DATUM GDA 94, PROJECTION MGA Zone 55

PROJECT: 18113718
DATE: 27 FEB 2019
DRAWN: TPC
CHECKED: IMK



Information contained on this drawing is the copyright of Golder Associates Pty. Ltd. Unauthorised use or reproduction of this plan either wholly or in part without written permission infringes copyright. © Golder Associates Pty. Ltd.

CoM Property ID: 108415

288-296 Rosslyn Street WEST MELBOURNE VIC 3003



LEGEND

 Parcel Boundary



Action Plan

EAO Recommendation

Apply EAO

EAO Comment

Historical industrial/commercial building with documented or likely past industrial use with possible high potential for contamination.

Site Use Summary

Current Land Use
Commercial

Historic Land Use
Other (unsure)

Key Information Supporting EAO Decision

Unknown current or past industrial use identified on site.

Additional Considerations

Festival Hall offices. Refurbished from factory 1985.
1895 indicates residential. Current building onsite in 1987 aerial.

Resources used to make decision



Resources used to make decision

Site Inspection,
MMBW Maps (1895),
Historical aerial photographs,
Current aerial photographs (May 2018)

WEST MELBOURNE EAO - AMENDMENT C309 -
WEST MELBOURNE STRUCTURE PLAN:
PRELIMINARY LAND CONTAMINATION ASSESSMENT

CITY OF MELBOURNE

GIS ID: 6648

COPYRIGHT

Aerial Imagery copyright
City of Melbourne

0 5 10 20 30 40 50 metres

SCALE (at A4) (BUILDING MAP) 1:1,000
DATUM GDA 94, PROJECTION MGA Zone 55

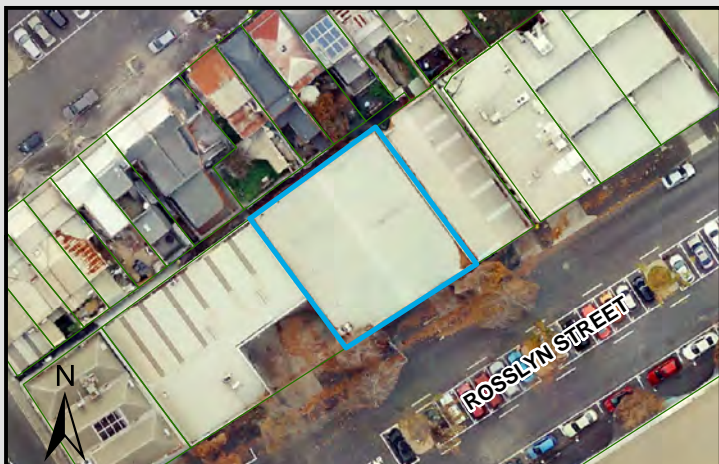
PROJECT: 18113718
DATE: 27 FEB 2019
DRAWN: TPC
CHECKED: IMK



Information contained on this drawing is the copyright of Golder Associates Pty. Ltd. Unauthorised use or reproduction of this plan either wholly or in part without written permission infringes copyright. © Golder Associates Pty. Ltd.

CoM Property ID: 108416

280-286 Rosslyn Street WEST MELBOURNE VIC 3003



LEGEND

 Parcel Boundary



Action Plan

EAO Recommendation

Apply EAO

EAO Comment

Site has been identified as being potentially contaminated in accordance with the Potentially Contaminated Land General Practice Note (DSE, 2005)

Site Use Summary

Current Land Use
Commercial

Historic Land Use
Industrial

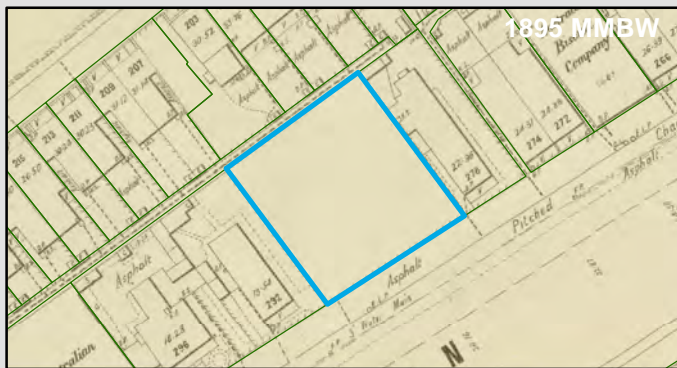
Key Information Supporting EAO Decision

Potentially contaminating land use/s identified on site as listed in the DSE General Practice Note (2005): Automotive repair/engine works

Additional Considerations

Former motor garage.

Resources used to make decision



Resources used to make decision

Publicly available Melbourne Street Directories (Yellow Pages 1990, Urban Business Directory 1975/6 & 1984), Site inspection, Historical aerial photographs (1968/9 & 1987)

WEST MELBOURNE EAO - AMENDMENT C309 -
WEST MELBOURNE STRUCTURE PLAN:
PRELIMINARY LAND CONTAMINATION ASSESSMENT

CITY OF MELBOURNE

GIS ID: 6649

COPYRIGHT

Aerial Imagery copyright
City of Melbourne

0 5 10 20 30 40 50 metres

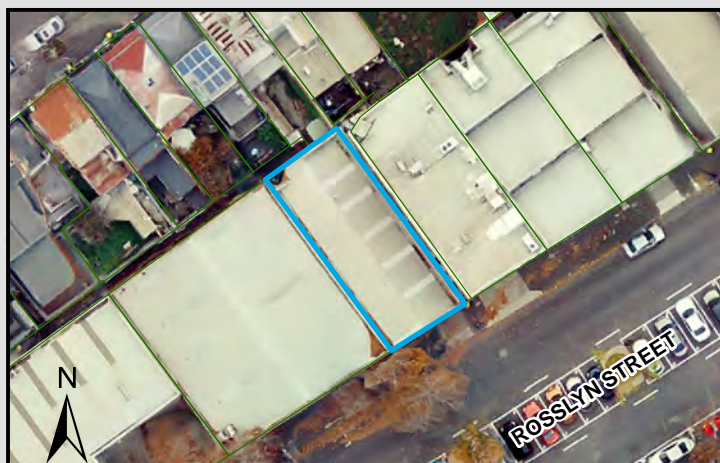
SCALE (at A4) (BUILDING MAP) 1:1,000
DATUM GDA 94, PROJECTION MGA Zone 55

PROJECT: 18113718
DATE: 27 FEB 2019
DRAWN: TPC
CHECKED: IMK



CoM Property ID: 108417

276-278 Rosslyn Street WEST MELBOURNE VIC 3003



LEGEND

 Parcel Boundary



Action Plan

EAO Recommendation

Apply EAO

EAO Comment

Historical industrial/commercial building with documented or likely past industrial use with possible high potential for contamination.

Site Use Summary

Current Land Use
Commercial

Historic Land Use
Residential

Key Information Supporting EAO Decision

Unknown current or past industrial use identified on site.

Additional Considerations

1895 indicates most likely residential building, 1987 indicates current building onsite. Company name listed - "Danihers Facility Management".

Resources used to make decision



Resources used to make decision

Site Inspection,
MMBW Maps (1895),
Historical aerial photographs,
Current aerial photographs (May 2018)

WEST MELBOURNE EAO - AMENDMENT C309 -
WEST MELBOURNE STRUCTURE PLAN:
PRELIMINARY LAND CONTAMINATION ASSESSMENT

CITY OF MELBOURNE

GIS ID: 6650

COPYRIGHT

Aerial Imagery copyright
City of Melbourne

0 4 8 16 24 32 40 metres

SCALE (at A4) (BUILDING MAP) 1:800
DATUM GDA 94, PROJECTION MGA Zone 55

PROJECT: 18113718
DATE: 27 FEB 2019
DRAWN: TPC
CHECKED: IMK



Information contained on this drawing is the copyright of Golder Associates Pty. Ltd. Unauthorised use or reproduction of this plan either wholly or in part without written permission infringes copyright. © Golder Associates Pty. Ltd.

CoM Property ID: 108421

260-262 Rosslyn Street WEST MELBOURNE VIC 3003



LEGEND

 Parcel Boundary



Action Plan

EAO Recommendation

Apply EAO

EAO Comment

Site has been identified as being potentially contaminated in accordance with the Potentially Contaminated Land General Practice Note (DSE, 2005)

Site Use Summary

Current Land Use
Industrial

Historic Land Use
Industrial

Key Information Supporting EAO Decision

Potentially contaminating land use/s identified on site as listed in the DSE General Practice Note (2005): Dry Cleaning, Automotive repair/engine works

Additional Considerations

Formerly 'Baldon Dye Works Pty. Ltd.' and motor garage 'Zap Motors'.

Resources used to make decision



Resources used to make decision

West Melbourne Heritage Review Appendix 2 (May 2016), Sands and McDougall Directory (1929, 1935, 1942, 1960), Site inspection, Historical aerial photographs (1968/9 & 1987), MMBW Maps (1895), Publicly available Melbourne Street Directories (Yellow Pages 1990, Urban Business Directory 1975/6 & 1984)

WEST MELBOURNE EAO - AMENDMENT C309 -
WEST MELBOURNE STRUCTURE PLAN:
PRELIMINARY LAND CONTAMINATION ASSESSMENT

CITY OF MELBOURNE

GIS ID: 6652

COPYRIGHT

Aerial Imagery copyright
City of Melbourne

0 4 8 16 24 32 40 metres

SCALE (at A4) (BUILDING MAP) 1:800
DATUM GDA 94, PROJECTION MGA Zone 55

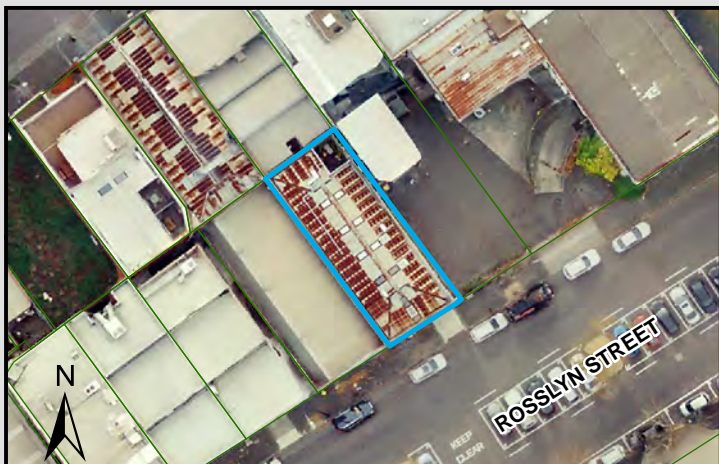
PROJECT: 18113718
DATE: 27 FEB 2019
DRAWN: TPC
CHECKED: IMK



Information contained on this drawing is the copyright of Golder Associates Pty. Ltd. Unauthorised use or reproduction of this plan either wholly or in part without written permission infringes copyright. © Golder Associates Pty. Ltd.

CoM Property ID: 108422

252-258 Rosslyn Street WEST MELBOURNE VIC 3003



LEGEND

 Parcel Boundary



Action Plan

EAO Recommendation

Apply EAO

EAO Comment

Historical industrial/commercial building with documented or likely past industrial use with possible high potential for contamination.

Site Use Summary

Current Land Use
Residential

Historic Land Use
Industrial

Key Information Supporting EAO Decision

Unknown current or past industrial use identified on site.

Additional Considerations

Company name listed - 'Sampson Brothers Pty. Ltd. welding equipment'.

Resources used to make decision



Resources used to make decision

West Melbourne Heritage Review Appendix 2 (May 2016), Site inspection, Historical aerial photographs (1968/9 & 1987)

WEST MELBOURNE EAO - AMENDMENT C309 -
WEST MELBOURNE STRUCTURE PLAN:
PRELIMINARY LAND CONTAMINATION ASSESSMENT

CITY OF MELBOURNE

GIS ID: 6653

COPYRIGHT

Aerial Imagery copyright
City of Melbourne

0 4.5 9 18 27 36 45 metres

SCALE (at A4) (BUILDING MAP) 1:900
DATUM GDA 94, PROJECTION MGA Zone 55

PROJECT: 18113718
DATE: 27 FEB 2019
DRAWN: TPC
CHECKED: IMK



CoM Property ID: 108424

194-208 Rosslyn Street WEST MELBOURNE VIC 3003



LEGEND

 Parcel Boundary



Action Plan

EAO Recommendation

Apply EAO

EAO Comment

Historical industrial/commercial building with documented or likely past industrial use with possible high potential for contamination.

Resources used to make decision



Site Use Summary

Current Land Use
Commercial

Historic Land Use
Other (unsure)

Key Information Supporting EAO Decision

Unknown current or past industrial use identified on site.

Additional Considerations

Currently Australian Piano Warehouse. 1895 plan indicates multiple smaller buildings, potentially industrial. 1969 aerial indicates current warehouse building present onsite.

Resources used to make decision

Site Inspection,
MMBW Maps (1895),
Historical aerial photographs,
Current aerial photographs (May 2018)

WEST MELBOURNE EAO - AMENDMENT C309 -
WEST MELBOURNE STRUCTURE PLAN:
PRELIMINARY LAND CONTAMINATION ASSESSMENT

CITY OF MELBOURNE

GIS ID: 6678

COPYRIGHT

Aerial Imagery copyright
City of Melbourne

0 5 10 20 30 40 50 metres

SCALE (at A4) (BUILDING MAP) 1:1,600
DATUM GDA 94, PROJECTION MGA Zone 55

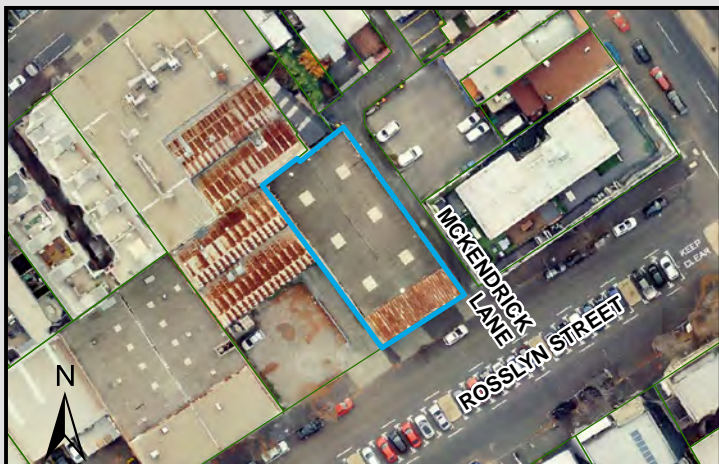
PROJECT: 18113718
DATE: 27 FEB 2019
DRAWN: TPC
CHECKED: IMK



Information contained on this drawing is the copyright of Golder Associates Pty. Ltd. Unauthorised use or reproduction of this plan either wholly or in part without written permission infringes copyright. © Golder Associates Pty. Ltd.

CoM Property ID: 108425

178-182 Rosslyn Street WEST MELBOURNE VIC 3003



LEGEND

 Parcel Boundary



Action Plan

EAO Recommendation

Apply EAO

EAO Comment

Site has been identified as being potentially contaminated in accordance with the Potentially Contaminated Land General Practice Note (DSE, 2005)

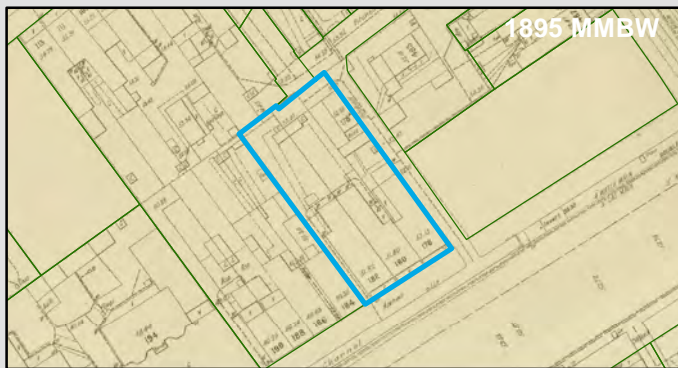
Resources used to make decision



Site Use Summary

Current Land Use
Commercial

Historic Land Use
Residential



Key Information Supporting EAO Decision

Potentially contaminating land use/s identified on site as listed in the DSE General Practice Note (2005): Automotive repair/engine works

Additional Considerations

MMBW 1895 plan maps indicate residential buildings across the site. Houses look demolished in 1969 aerial, Current industrial style building present in 1987 aerial.

Resources used to make decision

Site Inspection,
MMBW Maps (1895),
Historical aerial photographs

WEST MELBOURNE EAO - AMENDMENT C309 -
WEST MELBOURNE STRUCTURE PLAN:
PRELIMINARY LAND CONTAMINATION ASSESSMENT

CITY OF MELBOURNE

GIS ID: 7770

COPYRIGHT

Aerial Imagery copyright
City of Melbourne

0 5 10 20 30 40 50 metres

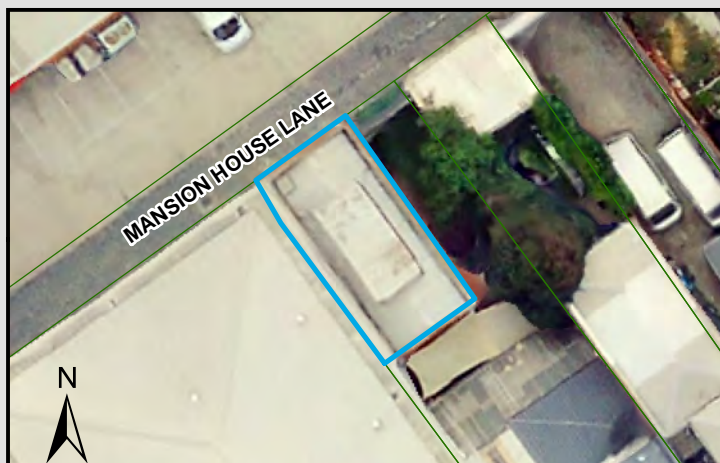
SCALE (at A4) (BUILDING MAP) 1:1,300
DATUM GDA 94, PROJECTION MGA Zone 55

PROJECT: 18113718
DATE: 27 FEB 2019
DRAWN: TPC
CHECKED: IMK



CoM Property ID: 108427

Substation Rear 126 Rosslyn Street WEST MELBOURNE VIC 3003



LEGEND

 Parcel Boundary



Action Plan

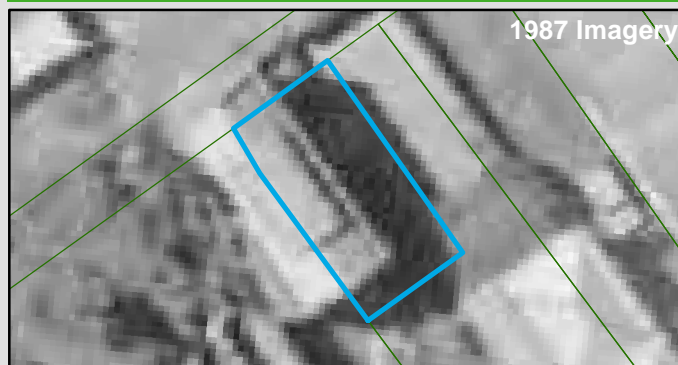
EAO Recommendation

Apply EAO

EAO Comment

Site has been identified as being potentially contaminated in accordance with the Potentially Contaminated Land General Practice Note (DSE, 2005)

Resources used to make decision



Site Use Summary

Current Land Use
Industrial

Historic Land Use
Industrial

Key Information Supporting EAO Decision

Potentially contaminating land use/s identified on site as listed in the DSE General Practice Note (2005): Electricity generation/power Station

Additional Considerations

MCC electricity Supply substation on site.

Resources used to make decision

West Melbourne Heritage Review Appendix 2 (May 2016), Site inspection, Historical aerial photographs (1968/9 & 1987)

WEST MELBOURNE EAO - AMENDMENT C309 -
WEST MELBOURNE STRUCTURE PLAN:
PRELIMINARY LAND CONTAMINATION ASSESSMENT

CITY OF MELBOURNE

GIS ID: 7764

COPYRIGHT

Aerial Imagery copyright
City of Melbourne

0 2 4 8 12 16 20 metres

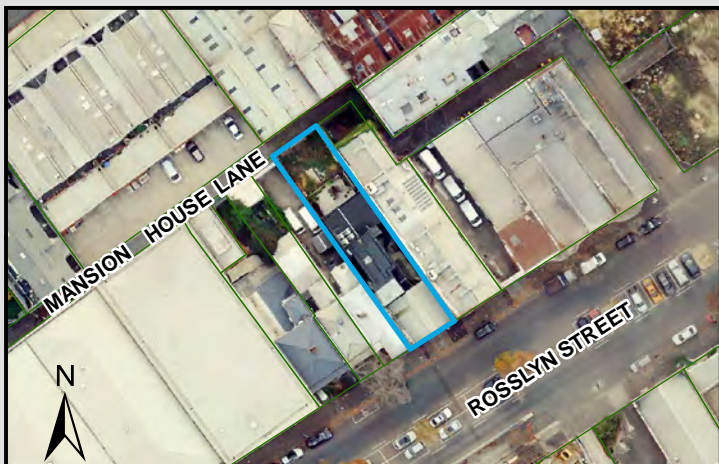
SCALE (at A4) (BUILDING MAP) 1:400
DATUM GDA 94, PROJECTION MGA Zone 55

PROJECT: 18113718
DATE: 27 FEB 2019
DRAWN: TPC
CHECKED: IMK



CoM Property ID: 108430

116-118 Rosslyn Street WEST MELBOURNE VIC 3003



LEGEND

 Parcel Boundary



Action Plan

EAO Recommendation

Apply EAO

EAO Comment

Historical industrial/commercial building with documented or likely past industrial use with possible high potential for contamination.

Site Use Summary

Current Land Use

Other (unsure)

Historic Land Use

Commercial

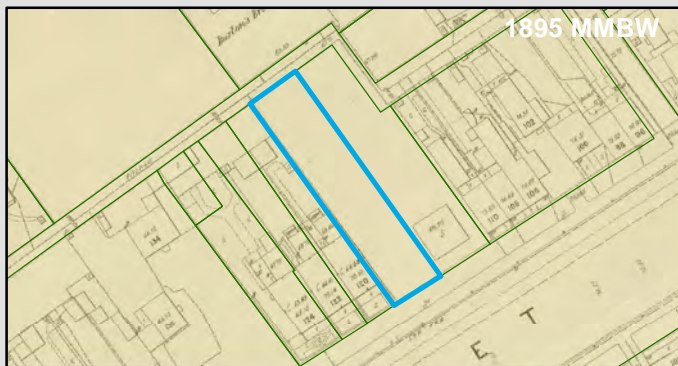
Key Information Supporting EAO Decision

Unknown current or past industrial use identified on site.

Additional Considerations

Former metal merchant "McFarlane D Pty Ltd metal merchant".

Resources used to make decision



Resources used to make decision

West Melbourne Heritage Review Appendix 2 (May 2016), Site inspection, Historical aerial photographs (1968/9 & 1987)

WEST MELBOURNE EAO - AMENDMENT C309 -
WEST MELBOURNE STRUCTURE PLAN:
PRELIMINARY LAND CONTAMINATION ASSESSMENT

CITY OF MELBOURNE

GIS ID: 7762

COPYRIGHT

Aerial Imagery copyright
City of Melbourne

0 5 10 20 30 40 50 metres

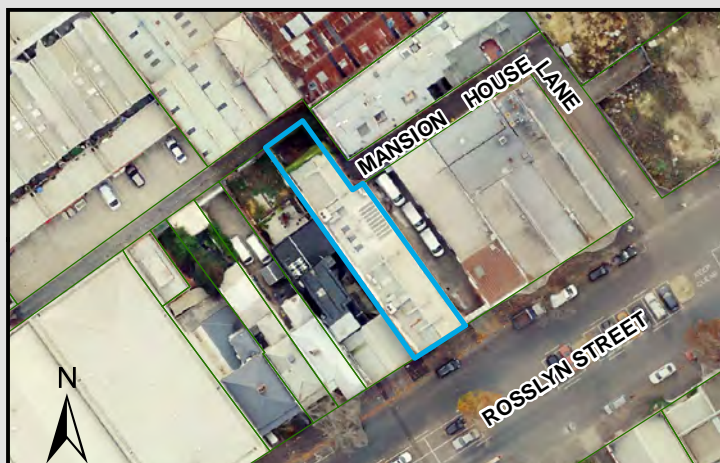
SCALE (at A4) (BUILDING MAP) 1:1,400
DATUM GDA 94, PROJECTION MGA Zone 55

PROJECT: 18113718
DATE: 27 FEB 2019
DRAWN: TPC
CHECKED: IMK



CoM Property ID: 108431

112-114 Rosslyn Street WEST MELBOURNE VIC 3003



LEGEND

 Parcel Boundary



Action Plan

EAO Recommendation

Apply EAO

EAO Comment

Historical industrial/commercial building with documented or likely past industrial use with possible high potential for contamination.

Resources used to make decision



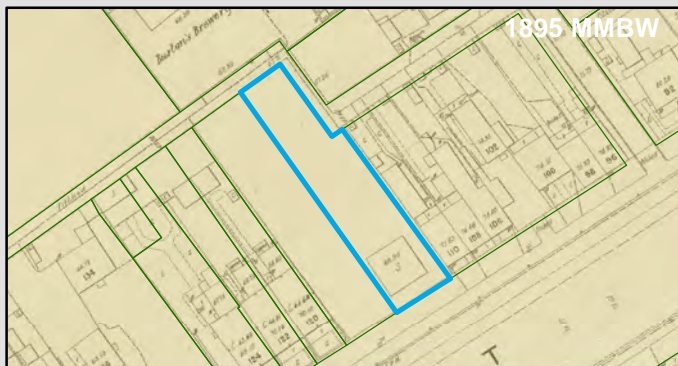
Site Use Summary

Current Land Use
Commercial

Historic Land Use
Industrial

Key Information Supporting EAO Decision

Unknown current or past industrial use identified on site.



Additional Considerations

Formerly 'New Record Machinery Co'.

Resources used to make decision

West Melbourne Heritage Review Appendix 2 (May 2016), Site inspection, Historical aerial photographs (1968/9 & 1987)

WEST MELBOURNE EAO - AMENDMENT C309 -
WEST MELBOURNE STRUCTURE PLAN:
PRELIMINARY LAND CONTAMINATION ASSESSMENT

CITY OF MELBOURNE

GIS ID: 7451

COPYRIGHT

Aerial Imagery copyright
City of Melbourne

0 5 10 20 30 40 50 metres

SCALE (at A4) (BUILDING MAP) 1:1,300
DATUM GDA 94, PROJECTION MGA Zone 55

PROJECT: 18113718
DATE: 27 FEB 2019
DRAWN: TPC
CHECKED: IMK



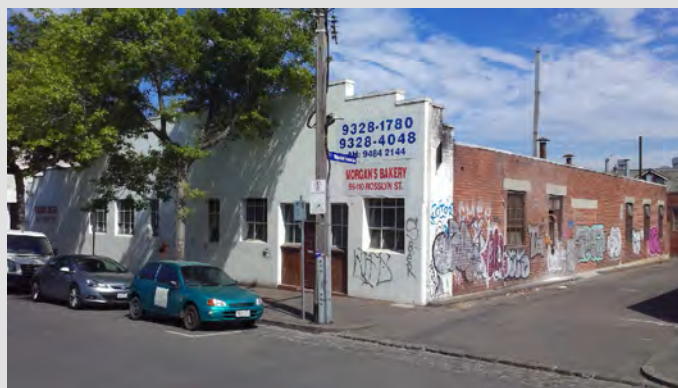
CoM Property ID: 108432

96-110 Rosslyn Street WEST MELBOURNE VIC 3003



LEGEND

 Parcel Boundary



Action Plan

EAO Recommendation

Apply EAO

EAO Comment

Site has been identified as being potentially contaminated in accordance with the Potentially Contaminated Land General Practice Note (DSE, 2005)

Resources used to make decision



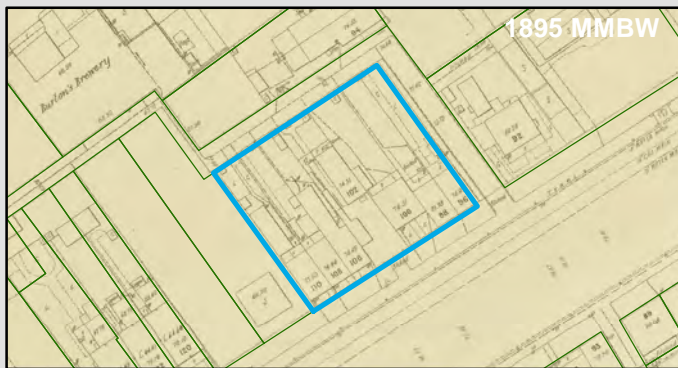
Site Use Summary

Current Land Use
Commercial

Historic Land Use
Industrial

Key Information Supporting EAO Decision

Potentially contaminating land use/s identified on site as listed in the DSE General Practice Note (2005): Metal smelting/refining/finishing



Additional Considerations

Formerly 'Fox L sheet metal worker'.

Resources used to make decision

West Melbourne Heritage Review Appendix 2 (May 2016), Site inspection, Historical aerial photographs (1968/9 & 1987)

WEST MELBOURNE EAO - AMENDMENT C309 -
WEST MELBOURNE STRUCTURE PLAN:
PRELIMINARY LAND CONTAMINATION ASSESSMENT

CITY OF MELBOURNE

GIS ID: 7763

COPYRIGHT

Aerial Imagery copyright
City of Melbourne

0 5 10 20 30 40 50 metres

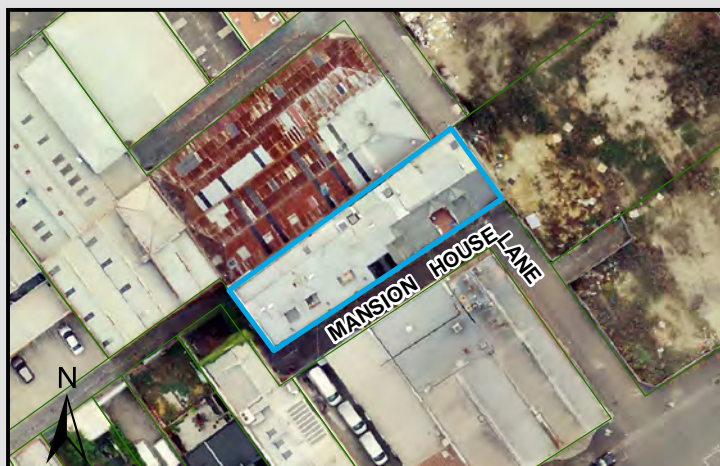
SCALE (at A4) (BUILDING MAP) 1:1,400
DATUM GDA 94, PROJECTION MGA Zone 55

PROJECT: 18113718
DATE: 27 FEB 2019
DRAWN: TPC
CHECKED: IMK



CoM Property ID: 108435

16-26 Mansion House Lane WEST MELBOURNE VIC 3003



LEGEND

 Parcel Boundary



Action Plan

EAO Recommendation

Apply EAO

EAO Comment

Historical industrial/commercial building with documented or likely past industrial use with possible high potential for contamination.

Site Use Summary

Current Land Use
Residential

Historic Land Use
Industrial

Key Information Supporting EAO Decision

Unknown current or past industrial use identified on site.

Additional Considerations

Interwar factory, converted into townhouses

Resources used to make decision



Resources used to make decision

Site inspection, Historical aerial photographs (1968/9 & 1987)

WEST MELBOURNE EAO - AMENDMENT C309 -
WEST MELBOURNE STRUCTURE PLAN:
PRELIMINARY LAND CONTAMINATION ASSESSMENT

CITY OF MELBOURNE

GIS ID: 7765

COPYRIGHT

Aerial Imagery copyright
City of Melbourne

0 5 10 20 30 40 50 metres

SCALE (at A4) (BUILDING MAP) 1:1,100
DATUM GDA 94, PROJECTION MGA Zone 55


PROJECT: 18113718
DATE: 27 FEB 2019
DRAWN: TPC
CHECKED: IMK



Information contained on this drawing is the copyright of Golder Associates Pty. Ltd. Unauthorised use or reproduction of this plan either wholly or in part without written permission infringes copyright. © Golder Associates Pty. Ltd.



LEGEND

 Parcel Boundary

Action Plan

EAO Recommendation

Apply EAO

EAO Comment

Site has been identified as being potentially contaminated in accordance with the Potentially Contaminated Land General Practice Note (DSE, 2005)

Site Use Summary

Current Land Use	Historic Land Use
Public land (schools, hospitals, parks)	Industrial

Key Information Supporting EAO Decision

Potentially contaminating land use/s identified on site as listed in the DSE General Practice Note (2005): Textile operations

Additional Considerations

Formerly corset makers 'R. and W.H. Symington and Co. (Aust) Pty. Ltd.' offices and factory.

Resources used to make decision



Resources used to make decision

West Melbourne Heritage Review Appendix 2 (May 2016), Site inspection, Historical aerial photographs (1968/9 & 1987)

WEST MELBOURNE EAO - AMENDMENT C309 -
WEST MELBOURNE STRUCTURE PLAN:
PRELIMINARY LAND CONTAMINATION ASSESSMENT

CITY OF MELBOURNE

GIS ID: 7688

COPYRIGHT

Aerial Imagery copyright
City of Melbourne

0 5 10 20 30 40 50 metres

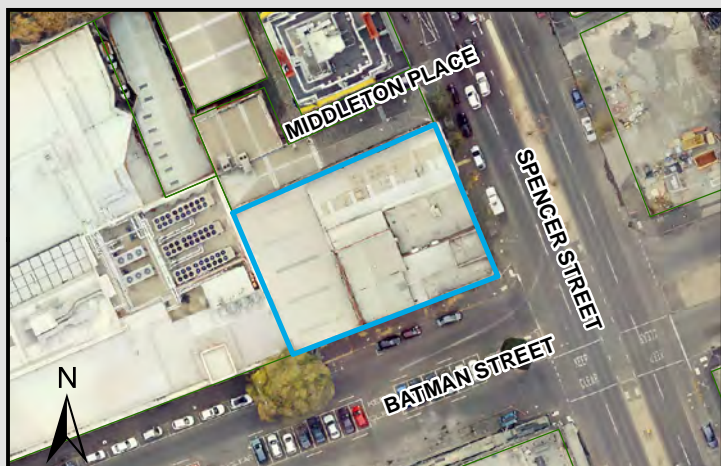
SCALE (at A4) (BUILDING MAP) 1:1,300
DATUM GDA 94, PROJECTION MGA Zone 55

PROJECT: 18113718
DATE: 27 FEB 2019
DRAWN: TPC
CHECKED: IMK




CoM Property ID: 108848

405-417 Spencer Street WEST MELBOURNE VIC 3003



LEGEND

 Parcel Boundary



Action Plan

EAO Recommendation

Apply EAO

EAO Comment

Site has been identified as being potentially contaminated in accordance with the Potentially Contaminated Land General Practice Note (DSE, 2005)

Site Use Summary

Current Land Use
Industrial

Historic Land Use
Industrial

Key Information Supporting EAO Decision

Potentially contaminating land use/s identified on site as listed in the DSE General Practice Note (2005): Automotive repair/engine works

Additional Considerations

Resources used to make decision



Resources used to make decision

Site inspection, Historical aerial photographs (1968/9 & 1987), MMBW Maps (1895)

WEST MELBOURNE EAO - AMENDMENT C309 -
WEST MELBOURNE STRUCTURE PLAN:
PRELIMINARY LAND CONTAMINATION ASSESSMENT

CITY OF MELBOURNE

GIS ID: 7501

COPYRIGHT

Aerial Imagery copyright
City of Melbourne

0 5 10 20 30 40 50 metres

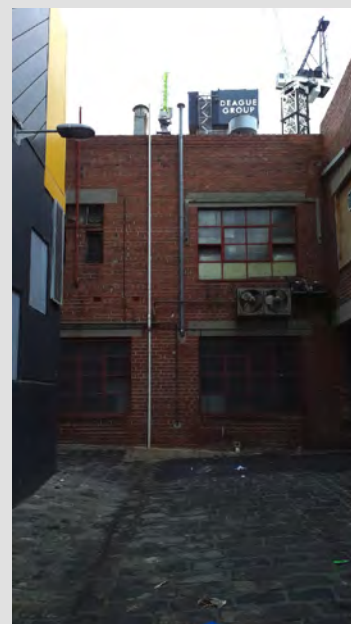
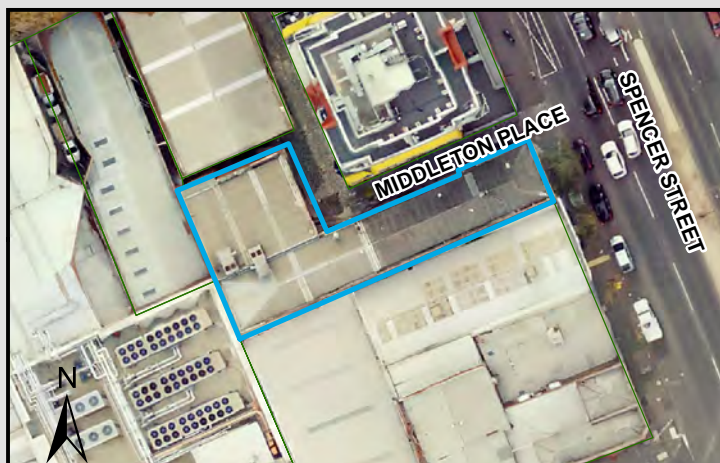
SCALE (at A4) (BUILDING MAP) 1:1,400
DATUM GDA 94, PROJECTION MGA Zone 55

PROJECT: 18113718
DATE: 27 FEB 2019
DRAWN: TPC
CHECKED: IMK



CoM Property ID: 108849

419-421 Spencer Street WEST MELBOURNE VIC 3003



LEGEND

 Parcel Boundary

Action Plan

EAO Recommendation

Apply EAO

EAO Comment

Site has been identified as being potentially contaminated in accordance with the Potentially Contaminated Land General Practice Note (DSE, 2005)

Site Use Summary

Current Land Use
Industrial

Historic Land Use
Industrial

Key Information Supporting EAO Decision

Potentially contaminating land use/s identified on site as listed in the DSE General Practice Note (2005): Electrical/electrical components manufacture

Additional Considerations

Former electrical appliance manufacturers. Evidence also suggests there is a UST or Filling at the site, which indicates potential for contamination.

Resources used to make decision



Resources used to make decision

West Melbourne Heritage Review Appendix 2 (May 2016), Site inspection, Historical aerial photographs (1968/9 & 1987)

WEST MELBOURNE EAO - AMENDMENT C309 -
WEST MELBOURNE STRUCTURE PLAN:
PRELIMINARY LAND CONTAMINATION ASSESSMENT

CITY OF MELBOURNE

GIS ID: 8291

COPYRIGHT

Aerial Imagery copyright
City of Melbourne

0 4.5 9 18 27 36 45 metres

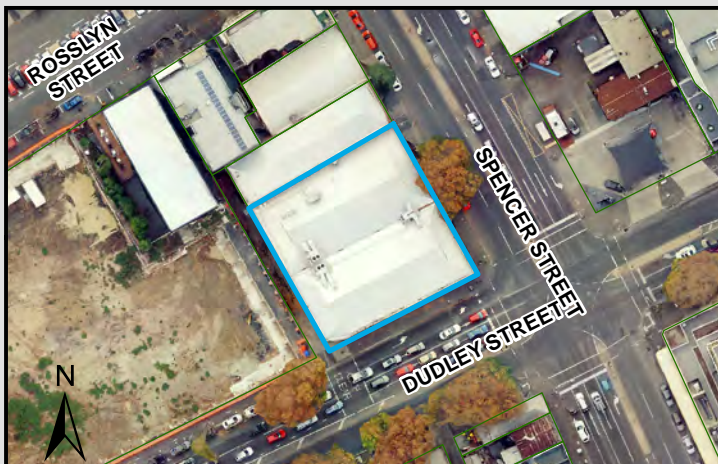
SCALE (at A4) (BUILDING MAP) 1:900
DATUM GDA 94, PROJECTION MGA Zone 55

PROJECT: 18113718
DATE: 27 FEB 2019
DRAWN: TPC
CHECKED: IMK



CoM Property ID: 108853

445-457 Spencer Street WEST MELBOURNE VIC 3003



LEGEND

 Parcel Boundary

Action Plan

EAO Recommendation

Apply EAO

EAO Comment

Site has been identified as being potentially contaminated in accordance with the Potentially Contaminated Land General Practice Note (DSE, 2005)

Site Use Summary

Current Land Use
Industrial

Historic Land Use
Industrial

Key Information Supporting EAO Decision

Potentially contaminating land use/s identified on site as listed in the DSE General Practice Note (2005): Automotive repair/engine works

Additional Considerations

Resources used to make decision



Resources used to make decision

Site inspection, Historical aerial photographs (1968/9 & 1987), MMBW Maps (1895)

WEST MELBOURNE EAO - AMENDMENT C309 -
WEST MELBOURNE STRUCTURE PLAN:
PRELIMINARY LAND CONTAMINATION ASSESSMENT

CITY OF MELBOURNE

GIS ID: 7804

COPYRIGHT

Aerial Imagery copyright
City of Melbourne

0 5 10 20 30 40 50 metres

SCALE (at A4) (BUILDING MAP) 1:1,700
DATUM GDA 94, PROJECTION MGA Zone 55


PROJECT: 18113718
DATE: 27 FEB 2019
DRAWN: TPC
CHECKED: IMK



Information contained on this drawing is the copyright of Golder Associates Pty. Ltd. Unauthorised use or reproduction of this plan either wholly or in part without written permission infringes copyright. © Golder Associates Pty. Ltd.



LEGEND

 Parcel Boundary

Action Plan

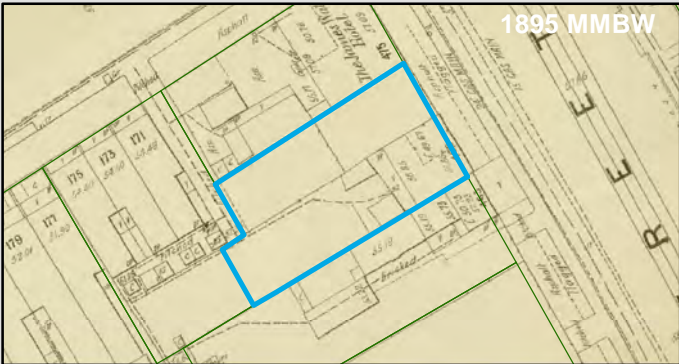
EAO Recommendation

Apply EAO

EAO Comment

Historical industrial/commercial building with documented or likely past industrial use with possible high potential for contamination.

Resources used to make decision



Site Use Summary

Current Land Use
Commercial

Historic Land Use
Other (unsure)

Key Information Supporting EAO Decision

Unknown current or past industrial use identified on site.

Additional Considerations

Vacant block in 1969 aerial, current building present in 1987.

Resources used to make decision

Site Inspection,
MMBW Maps (1895),
Historical aerial photographs

WEST MELBOURNE EAO - AMENDMENT C309 -
WEST MELBOURNE STRUCTURE PLAN:
PRELIMINARY LAND CONTAMINATION ASSESSMENT

CITY OF MELBOURNE

GIS ID: 7806

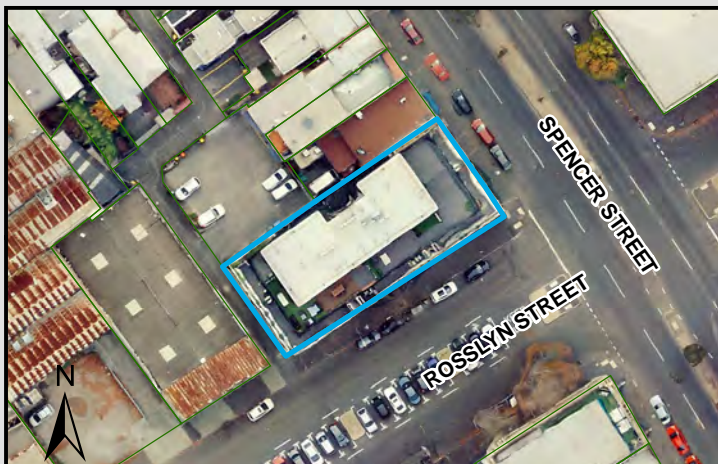
COPYRIGHT
Aerial Imagery copyright
City of Melbourne

0 4.5 9 18 27 36 45 metres
SCALE (at A4) (BUILDING MAP) 1:900
DATUM GDA 94, PROJECTION MGA Zone 55
PROJECT: 18113718
DATE: 27 FEB 2019
DRAWN: TPC
CHECKED: IMK



CoM Property ID: 108857

162-174 Rosslyn Street WEST MELBOURNE VIC 3003



LEGEND

 Parcel Boundary



Action Plan

EAO Recommendation

Apply EAO

EAO Comment

Site has been issued with a Statement of Environmental Audit with Conditions that require ongoing management for sensitive uses. (Carms No. 69010-2)

Site Use Summary

Current Land Use
Residential

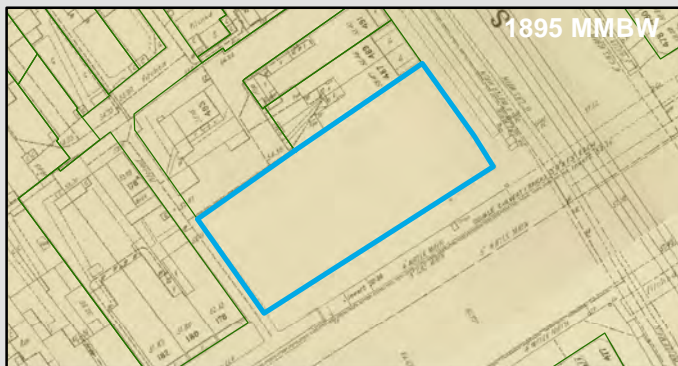
Historic Land Use
Industrial

Key Information Supporting EAO Decision

Potentially contaminating land use/s identified on site as listed in the DSE General Practice Note (2005): Service station/fuel storage

Additional Considerations

Resources used to make decision



Resources used to make decision

Site inspection, Historical aerial photographs (1968/9 & 1987), EPA Audits (53X and 53V), Publically available Melbourne Street Directories (Yellow Pages 1990, Urban Business Directory 1975/6 & 1984)

WEST MELBOURNE EAO - AMENDMENT C309 -
WEST MELBOURNE STRUCTURE PLAN:
PRELIMINARY LAND CONTAMINATION ASSESSMENT

CITY OF MELBOURNE

GIS ID: 7771

COPYRIGHT

Aerial Imagery copyright
City of Melbourne

0 5 10 20 30 40 50 metres

SCALE (at A4) (BUILDING MAP) 1:1,200
DATUM GDA 94, PROJECTION MGA Zone 55

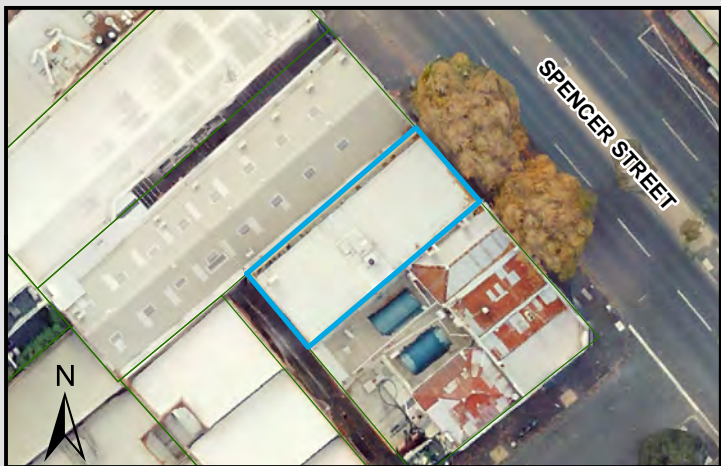
PROJECT: 18113718
DATE: 27 FEB 2019
DRAWN: TPC
CHECKED: IMK



Information contained on this drawing is the copyright of Golder Associates Pty. Ltd. Unauthorised use or reproduction of this plan either wholly or in part without written permission infringes copyright. © Golder Associates Pty. Ltd.

CoM Property ID: 108868

525 Spencer Street WEST MELBOURNE VIC 3003



LEGEND

 Parcel Boundary



Action Plan

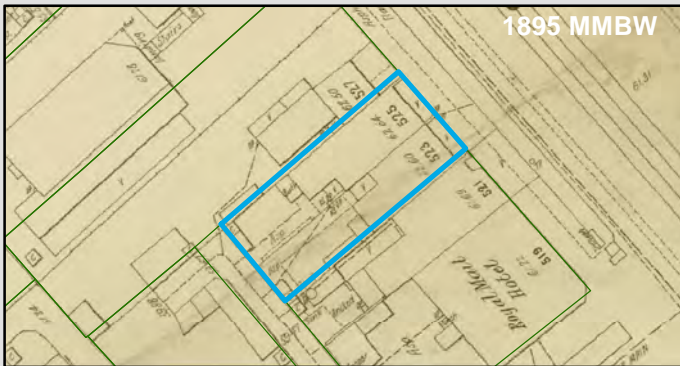
EAO Recommendation

Apply EAO

EAO Comment

Historical industrial/commercial building with documented or likely past industrial use with possible high potential for contamination.

Resources used to make decision



Site Use Summary

Current Land Use
Commercial

Historic Land Use
Residential

Key Information Supporting EAO Decision

Unknown current or past industrial use identified on site.

Additional Considerations

1895 plan indicates residential. 1987 aerial indicates current building onsite, use unknown.

Resources used to make decision

Site Inspection,
MMBW Maps (1895),
Historical aerial photographs,
Current aerial photographs (May 2018)

WEST MELBOURNE EAO - AMENDMENT C309 -
WEST MELBOURNE STRUCTURE PLAN:
PRELIMINARY LAND CONTAMINATION ASSESSMENT

CITY OF MELBOURNE

GIS ID: 6674

COPYRIGHT

Aerial Imagery copyright
City of Melbourne

0 4 8 16 24 32 40 metres

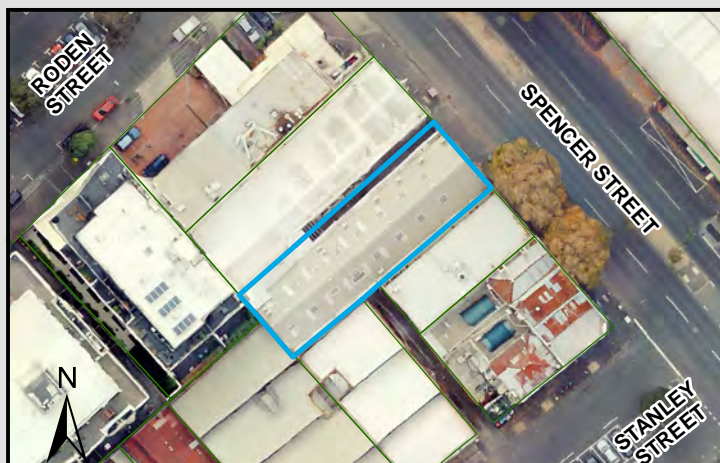
SCALE (at A4) (BUILDING MAP) 1:800
DATUM GDA 94, PROJECTION MGA Zone 55

PROJECT: 18113718
DATE: 27 FEB 2019
DRAWN: TPC
CHECKED: IMK



CoM Property ID: 108869

527-531 Spencer Street WEST MELBOURNE VIC 3003



LEGEND

 Parcel Boundary

Action Plan

EAO Recommendation

Apply EAO

EAO Comment

Site has been identified as being potentially contaminated in accordance with the Potentially Contaminated Land General Practice Note (DSE, 2005)

Site Use Summary

Current Land Use
Commercial

Historic Land Use
Industrial

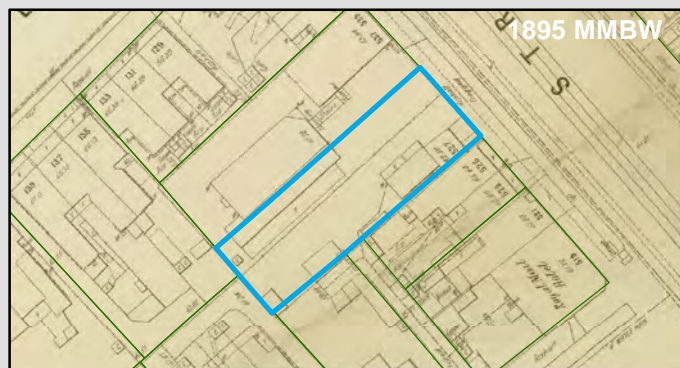
Key Information Supporting EAO Decision

Potentially contaminating land use/s identified on site as listed in the DSE General Practice Note (2005): Automotive repair/engine works

Additional Considerations

Building likely involved with neighbouring building. Formerly 'Vulcan Motors Pty. Ltd.' motor garage.

Resources used to make decision



Resources used to make decision

West Melbourne Heritage Review Appendix 2 (May 2016), Site inspection, Historical aerial photographs (1968/9 & 1987)

WEST MELBOURNE EAO - AMENDMENT C309 -
WEST MELBOURNE STRUCTURE PLAN:
PRELIMINARY LAND CONTAMINATION ASSESSMENT

CITY OF MELBOURNE

GIS ID: 6675

COPYRIGHT

Aerial Imagery copyright
City of Melbourne

0 5 10 20 30 40 50 metres

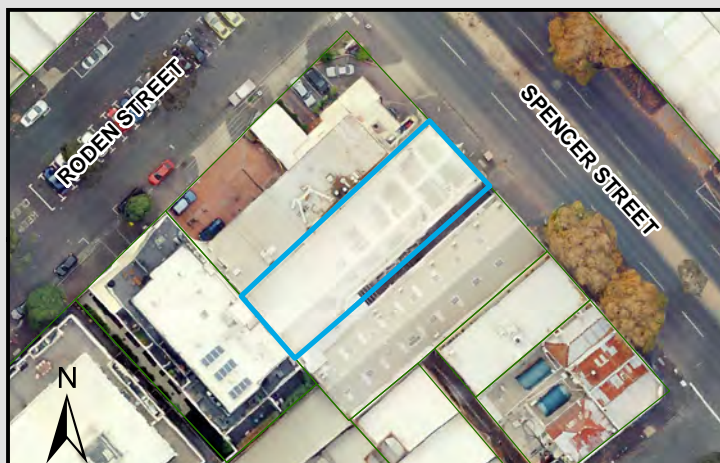
SCALE (at A4) (BUILDING MAP) 1:1,200
DATUM GDA 94, PROJECTION MGA Zone 55

PROJECT: 18113718
DATE: 27 FEB 2019
DRAWN: TPC
CHECKED: IMK



CoM Property ID: 108870

535-539 Spencer Street WEST MELBOURNE VIC 3003



LEGEND

 Parcel Boundary

Action Plan

EAO Recommendation

Apply EAO

EAO Comment

Site has been identified as being potentially contaminated in accordance with the Potentially Contaminated Land General Practice Note (DSE, 2005)

Site Use Summary

Current Land Use
Commercial

Historic Land Use
Industrial

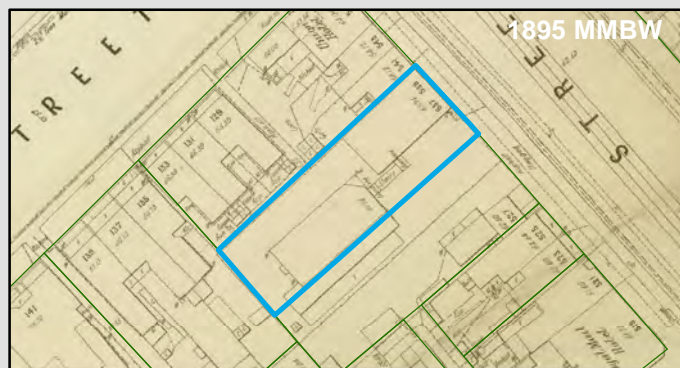
Key Information Supporting EAO Decision

Potentially contaminating land use/s identified on site as listed in the DSE General Practice Note (2005): Automotive repair/engine works

Additional Considerations

Formerly 'Vulcan Motors Pty. Ltd.' motor garage.

Resources used to make decision



Resources used to make decision

West Melbourne Heritage Review Appendix 2 (May 2016), Site inspection, Historical aerial photographs (1968/9 & 1987)

WEST MELBOURNE EAO - AMENDMENT C309 -
WEST MELBOURNE STRUCTURE PLAN:
PRELIMINARY LAND CONTAMINATION ASSESSMENT

CITY OF MELBOURNE

GIS ID: 6676

COPYRIGHT

Aerial Imagery copyright
City of Melbourne

0 5 10 20 30 40 50 metres

SCALE (at A4) (BUILDING MAP) 1:1,200
DATUM GDA 94, PROJECTION MGA Zone 55

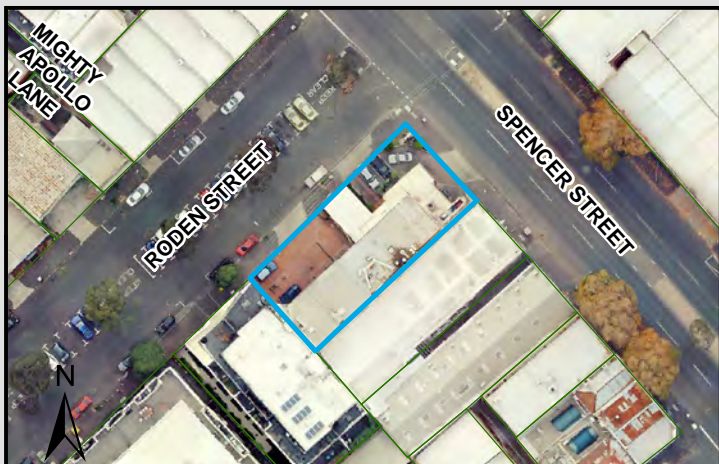
PROJECT: 18113718
DATE: 27 FEB 2019
DRAWN: TPC
CHECKED: IMK



Information contained on this drawing is the copyright of Golder Associates Pty. Ltd. Unauthorised use or reproduction of this plan either wholly or in part without written permission infringes copyright. © Golder Associates Pty. Ltd.

CoM Property ID: 108871

541-547 Spencer Street WEST MELBOURNE VIC 3003



LEGEND

 Parcel Boundary



Action Plan

EAO Recommendation

Apply EAO

EAO Comment

Site has been identified as being potentially contaminated in accordance with the Potentially Contaminated Land General Practice Note (DSE, 2005)

Site Use Summary

Current Land Use
Industrial

Historic Land Use
Industrial

Key Information Supporting EAO Decision

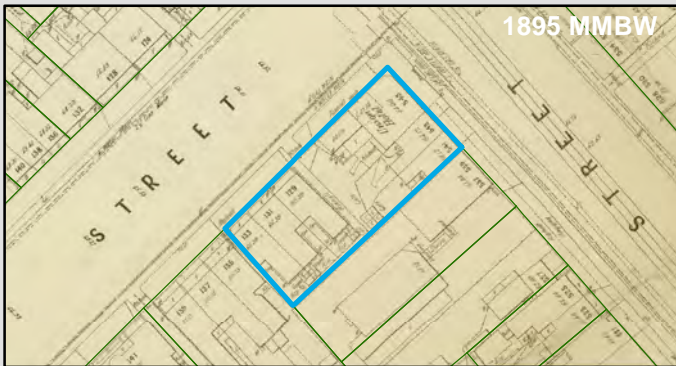
Potentially contaminating land use/s identified on site as listed in the DSE General Practice Note (2005): Service station/fuel storage

Additional Considerations

Resources used to make decision



1987 Imagery



1895 MMBW

Resources used to make decision

West Melbourne Heritage Review Appendix 2 (May 2016), Site inspection, Historical aerial photographs (1968/9 & 1987), MMBW Maps (1895)

WEST MELBOURNE EAO - AMENDMENT C309 -
WEST MELBOURNE STRUCTURE PLAN:
PRELIMINARY LAND CONTAMINATION ASSESSMENT

CITY OF MELBOURNE

GIS ID: 6677

COPYRIGHT

Aerial Imagery copyright
City of Melbourne

0 5 10 20 30 40 50 metres

SCALE (at A4) (BUILDING MAP) 1:1,400
DATUM GDA 94, PROJECTION MGA Zone 55

PROJECT: 18113718
DATE: 27 FEB 2019
DRAWN: TPC
CHECKED: IMK



Information contained on this drawing is the copyright of Golder Associates Pty. Ltd. Unauthorised use or reproduction of this plan either wholly or in part without written permission infringes copyright. © Golder Associates Pty. Ltd.

CoM Property ID: 108872

135-137 Roden Street WEST MELBOURNE VIC 3003



LEGEND

 Parcel Boundary



Action Plan

EAO Recommendation

Apply EAO

EAO Comment

Site has been identified as being potentially contaminated in accordance with the Potentially Contaminated Land General Practice Note (DSE, 2005)

Site Use Summary

Current Land Use
Residential

Historic Land Use
Industrial

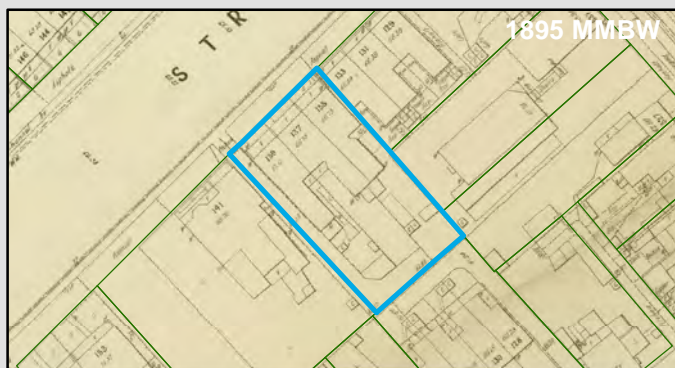
Key Information Supporting EAO Decision

Potentially contaminating land use/s identified on site as listed in the DSE General Practice Note (2005): Automotive repair/engine works

Additional Considerations

Information from EPA Audit on neighbouring property indicate this site was a former auto panel workshop. Business directory indicate body workshop near this site.

Resources used to make decision



Resources used to make decision

Site Inspection,
MMBW Maps (1895),
Historical aerial photographs,
Current aerial photographs (May 2018),
Publicly available Melbourne Street Directories (Yellow Pages 1990, Urban Business Directory 1975/6 & 1984),
EPA Audits (53X and 53V)

WEST MELBOURNE EAO - AMENDMENT C309 -
WEST MELBOURNE STRUCTURE PLAN:
PRELIMINARY LAND CONTAMINATION ASSESSMENT

CITY OF MELBOURNE

GIS ID: 6697

COPYRIGHT

Aerial Imagery copyright
City of Melbourne

0 5 10 20 30 40 50 metres

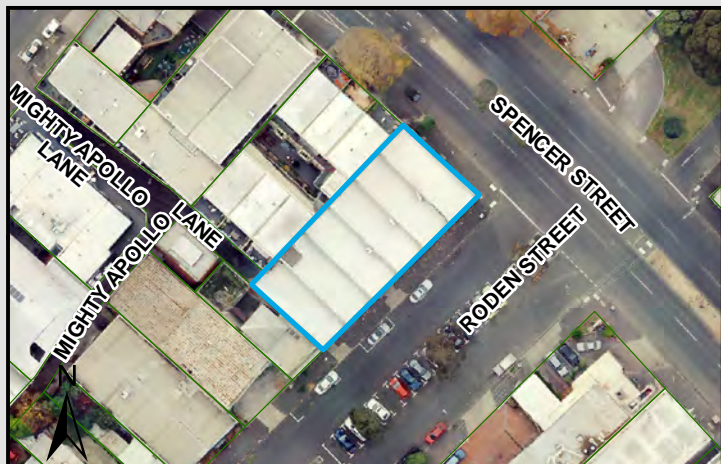
SCALE (at A4) (BUILDING MAP) 1:1,300
DATUM GDA 94, PROJECTION MGA Zone 55

PROJECT: 18113718
DATE: 27 FEB 2019
DRAWN: TPC
CHECKED: IMK



CoM Property ID: 108873

551-557 Spencer Street WEST MELBOURNE VIC 3003



LEGEND

 Parcel Boundary



Action Plan

EAO Recommendation

Apply EAO

EAO Comment

Site has been identified as being potentially contaminated in accordance with the Potentially Contaminated Land General Practice Note (DSE, 2005)

Site Use Summary

Current Land Use
Industrial

Historic Land Use
Industrial

Key Information Supporting EAO Decision

Potentially contaminating land use/s identified on site as listed in the DSE General Practice Note (2005): Wool scouring

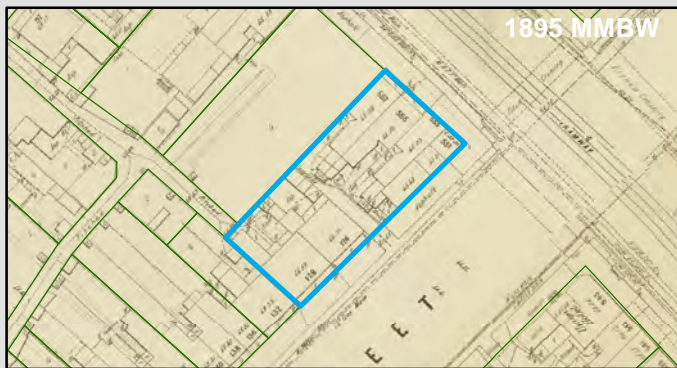
Additional Considerations

Aerials show a saw tooth roof on site, which indicates likely past industrial use

Resources used to make decision



1987 Imagery



1895 MMBW

Resources used to make decision

West Melbourne Heritage Review Appendix 2 (May 2016), Site inspection, Historical aerial photographs (1968/9 & 1987), MMBW Maps (1895)

WEST MELBOURNE EAO - AMENDMENT C309 -
WEST MELBOURNE STRUCTURE PLAN:
PRELIMINARY LAND CONTAMINATION ASSESSMENT

CITY OF MELBOURNE

GIS ID: 6598

COPYRIGHT

Aerial Imagery copyright
City of Melbourne

0 5 10 20 30 40 50 metres

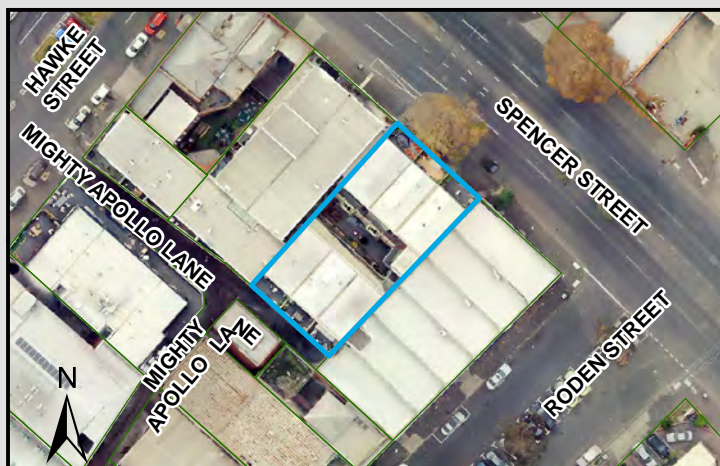
SCALE (at A4) (BUILDING MAP) 1:1,400
DATUM GDA 94, PROJECTION MGA Zone 55

PROJECT: 18113718
DATE: 27 FEB 2019
DRAWN: TPC
CHECKED: IMK



CoM Property ID: 108874

Cinnabar Square 559-565 Spencer Street WEST MELBOURNE VIC 3003



LEGEND

 Parcel Boundary

Action Plan

EAO Recommendation

Apply EAO

EAO Comment

Historical industrial/commercial building with documented or likely past industrial use with possible high potential for contamination.

Site Use Summary

Current Land Use
Commercial

Historic Land Use
Industrial

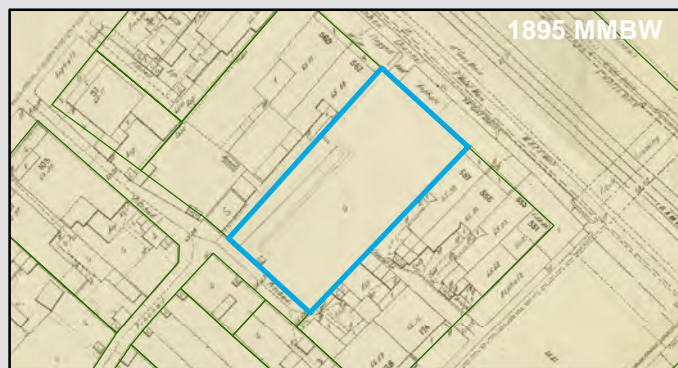
Key Information Supporting EAO Decision

Unknown current or past industrial use identified on site.

Additional Considerations

1895 indicates vacant site. Heritage register indicates warehouse built 1930s, associated activity 'Wool Broker'. Textile operations onsite unknown.

Resources used to make decision



Resources used to make decision

West Melbourne Heritage Review Appendix 2 (May 2016), Site inspection, Historical aerial photographs (1968/9 & 1987)

WEST MELBOURNE EAO - AMENDMENT C309 -
WEST MELBOURNE STRUCTURE PLAN:
PRELIMINARY LAND CONTAMINATION ASSESSMENT

CITY OF MELBOURNE

GIS ID: 6599

COPYRIGHT

Aerial Imagery copyright
City of Melbourne

0 5 10 20 30 40 50 metres

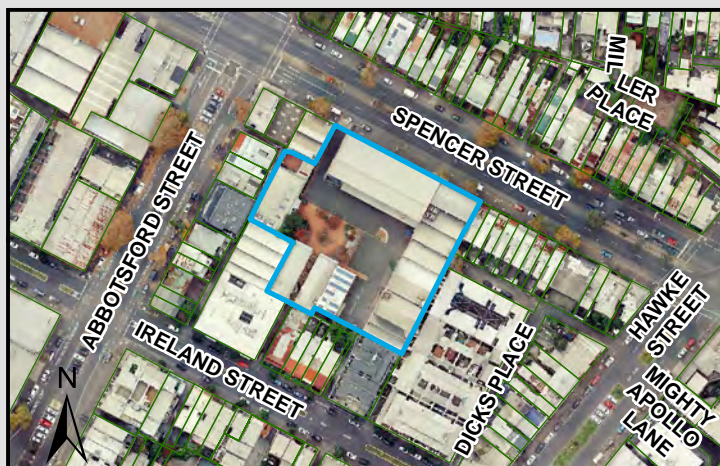
SCALE (at A4) (BUILDING MAP) 1:1,300
DATUM GDA 94, PROJECTION MGA Zone 55

PROJECT: 18113718
DATE: 27 FEB 2019
DRAWN: TPC
CHECKED: IMK



CoM Property ID: 108882

617-643 Spencer Street WEST MELBOURNE VIC 3003



LEGEND

 Parcel Boundary

Action Plan

EAO Recommendation

Apply EAO

EAO Comment

Site has been identified as being potentially contaminated in accordance with the Potentially Contaminated Land General Practice Note (DSE, 2005)

Site Use Summary

Current Land Use
Industrial

Historic Land Use
Industrial

Key Information Supporting EAO Decision

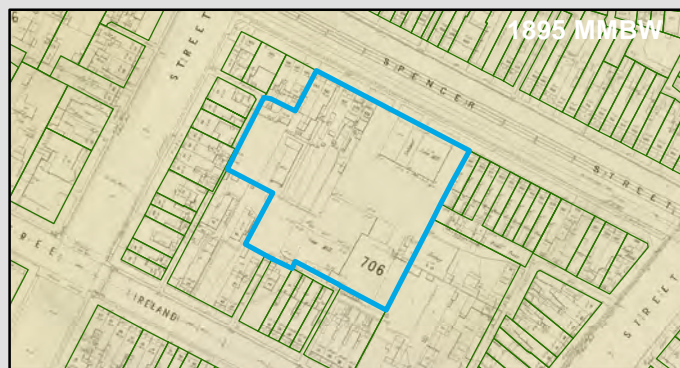
Potentially contaminating land use/s identified on site as listed in the DSE General Practice Note (2005): Underground storage tank (Medium Potential)

Additional Considerations

Historical aerals show previous industry, with new buildings within. Old 'Stacks' present in 1969 aerial in vicinity of old buildings. MMBW plans show a 'Saw Mill' to the east and rear of the site.



Resources used to make decision



Resources used to make decision

Site inspection, Historical aerial photographs (1968/9 & 1987)

WEST MELBOURNE EAO - AMENDMENT C309 -
WEST MELBOURNE STRUCTURE PLAN:
PRELIMINARY LAND CONTAMINATION ASSESSMENT

CITY OF MELBOURNE

GIS ID: 8711

COPYRIGHT

Aerial Imagery copyright
City of Melbourne

0 15 30 60 90 120 150 metres

SCALE (at A4) (BUILDING MAP) 1:3,100
DATUM GDA 94, PROJECTION MGA Zone 55

PROJECT: 18113718
DATE: 27 FEB 2019
DRAWN: TPC
CHECKED: IMK



CoM Property ID: 108883

645-649 Spencer Street WEST MELBOURNE VIC 3003



LEGEND

 Parcel Boundary



Action Plan

EAO Recommendation

Apply EAO

EAO Comment

Historical industrial/commercial building with documented or likely past industrial use with possible high potential for contamination.

Site Use Summary

Current Land Use
Commercial

Historic Land Use
Industrial

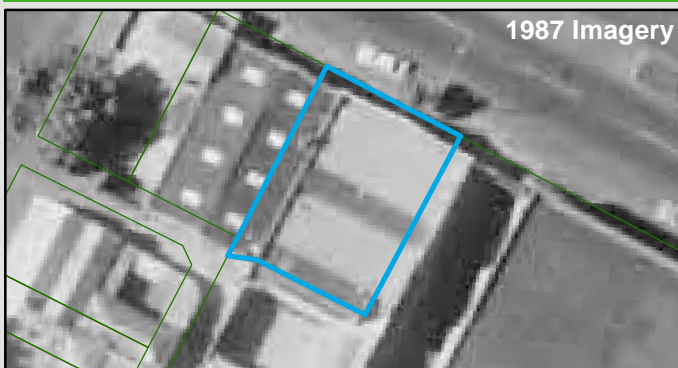
Key Information Supporting EAO Decision

Unknown current or past industrial use identified on site.

Additional Considerations

Aerials show a saw tooth roof on site, which indicates likely past industrial use

Resources used to make decision



Resources used to make decision

MMBW Maps (1895), West Melbourne Heritage Review Appendix 2 (May 2016), Site inspection, Historical aerial photographs (1968/9 & 1987)

WEST MELBOURNE EAO - AMENDMENT C309 -
WEST MELBOURNE STRUCTURE PLAN:
PRELIMINARY LAND CONTAMINATION ASSESSMENT

CITY OF MELBOURNE

GIS ID: 8712

COPYRIGHT

Aerial Imagery copyright
City of Melbourne

0 3.5 7 14 21 28 35 metres

SCALE (at A4) (BUILDING MAP) 1:700
DATUM GDA 94, PROJECTION MGA Zone 55

PROJECT: 18113718
DATE: 27 FEB 2019
DRAWN: TPC
CHECKED: IMK



CoM Property ID: 108884

651-653 Spencer Street WEST MELBOURNE VIC 3003



LEGEND

 Parcel Boundary

Action Plan

EAO Recommendation

Apply EAO

EAO Comment

Site has been identified as being potentially contaminated in accordance with the Potentially Contaminated Land General Practice Note (DSE, 2005)

Site Use Summary

Current Land Use
Industrial

Historic Land Use
Industrial

Key Information Supporting EAO Decision

Potentially contaminating land use/s identified on site as listed in the DSE General Practice Note (2005): Automotive repair/engine works

Additional Considerations

Resources used to make decision



Resources used to make decision

Site inspection, Historical aerial photographs (1968/9 & 1987), MMBW Maps (1895)

WEST MELBOURNE EAO - AMENDMENT C309 -
WEST MELBOURNE STRUCTURE PLAN:
PRELIMINARY LAND CONTAMINATION ASSESSMENT

CITY OF MELBOURNE

GIS ID: 8713

COPYRIGHT

Aerial Imagery copyright
City of Melbourne

0 3.5 7 14 21 28 35 metres

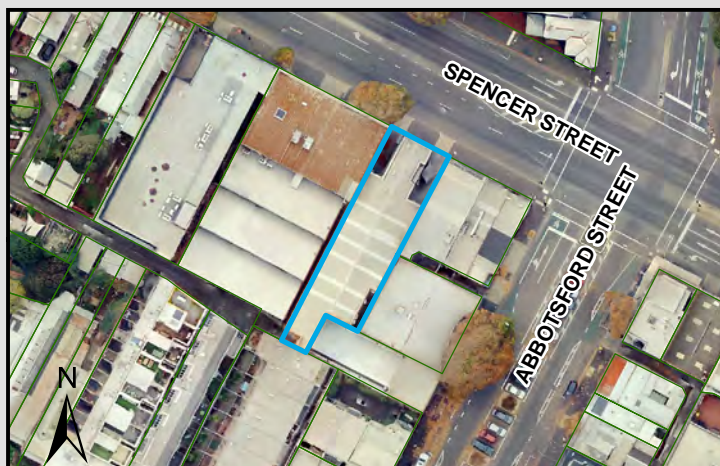
SCALE (at A4) (BUILDING MAP) 1:700
DATUM GDA 94, PROJECTION MGA Zone 55

PROJECT: 18113718
DATE: 27 FEB 2019
DRAWN: TPC
CHECKED: IMK



CoM Property ID: 108888

669-671 Spencer Street WEST MELBOURNE VIC 3003



LEGEND

 Parcel Boundary



Action Plan

EAO Recommendation

Apply EAO

EAO Comment

Historical industrial/commercial building with documented or likely past industrial use with possible high potential for contamination.

Resources used to make decision



Site Use Summary

Current Land Use
Commercial

Historic Land Use
Industrial

Key Information Supporting EAO Decision

Unknown current or past industrial use identified on site.

Additional Considerations

Brick building refurbished in 2004. Original building structure indicates manufacturing industry.

Resources used to make decision

West Melbourne Heritage Review Appendix 2 (May 2016), Site inspection, Historical aerial photographs (1968/9 & 1987)

WEST MELBOURNE EAO - AMENDMENT C309 -
WEST MELBOURNE STRUCTURE PLAN:
PRELIMINARY LAND CONTAMINATION ASSESSMENT

CITY OF MELBOURNE

GIS ID: 8517

COPYRIGHT

Aerial Imagery copyright
City of Melbourne

0 5 10 20 30 40 50 metres

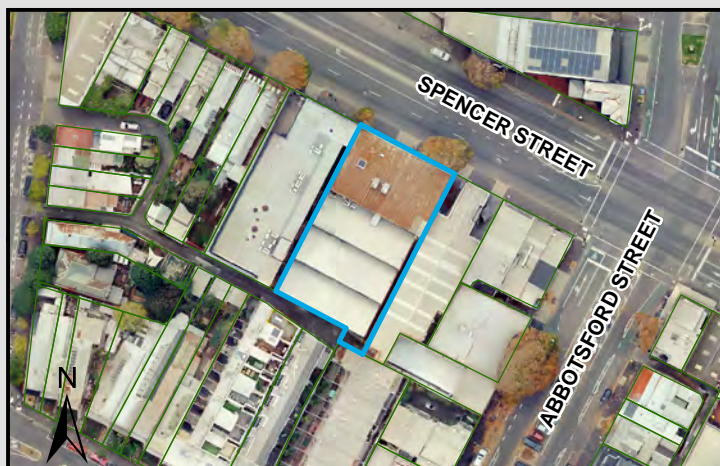
SCALE (at A4) (BUILDING MAP) 1:1,600
DATUM GDA 94, PROJECTION MGA Zone 55

PROJECT: 18113718
DATE: 27 FEB 2019
DRAWN: TPC
CHECKED: IMK



CoM Property ID: 108889

673-683 Spencer Street WEST MELBOURNE VIC 3003



LEGEND

 Parcel Boundary



Action Plan

EAO Recommendation

Apply EAO

EAO Comment

Site has been identified as being potentially contaminated in accordance with the Potentially Contaminated Land General Practice Note (DSE, 2005)

Resources used to make decision



Site Use Summary

Current Land Use
Commercial

Historic Land Use
Industrial



Key Information Supporting EAO Decision

Potentially contaminating land use/s identified on site as listed in the DSE General Practice Note (2005): Printing shops

Additional Considerations

Aerials show a saw tooth roof on site, which indicates likely past industrial use

Resources used to make decision

Site inspection, Historical aerial photographs (1968/9 & 1987), MMBW Maps (1895)

WEST MELBOURNE EAO - AMENDMENT C309 -
WEST MELBOURNE STRUCTURE PLAN:
PRELIMINARY LAND CONTAMINATION ASSESSMENT

CITY OF MELBOURNE

GIS ID: 8518

COPYRIGHT

Aerial Imagery copyright
City of Melbourne

0 5 10 20 30 40 50 metres

SCALE (at A4) (BUILDING MAP) 1:1,900
DATUM GDA 94, PROJECTION MGA Zone 55

PROJECT: 18113718
DATE: 27 FEB 2019
DRAWN: TPC
CHECKED: IMK



CoM Property ID: 108890

685-691 Spencer Street WEST MELBOURNE VIC 3003



LEGEND

 Parcel Boundary

Action Plan

EAO Recommendation

Apply EAO

EAO Comment

Historical industrial/commercial building with documented or likely past industrial use with possible high potential for contamination.

Site Use Summary

Current Land Use
Commercial

Historic Land Use
Other (unsure)

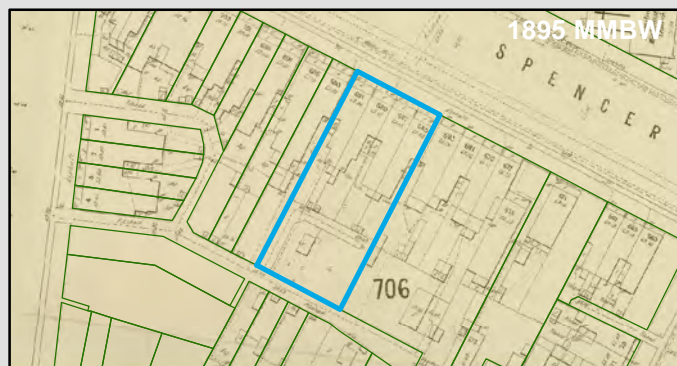
Key Information Supporting EAO Decision

Unknown current or past industrial use identified on site.

Additional Considerations

Built mid 1960's extensively refurbished 2002. 1969 aerial shows building typical of warehouse, use unknown.

Resources used to make decision



Resources used to make decision

City of Melbourne interactive map (2019), Site inspection, Historical aerial photographs (1968/9 & 1987), MMBW Maps (1895)

WEST MELBOURNE EAO - AMENDMENT C309 -
WEST MELBOURNE STRUCTURE PLAN:
PRELIMINARY LAND CONTAMINATION ASSESSMENT

CITY OF MELBOURNE

GIS ID: 8519

COPYRIGHT

Aerial Imagery copyright
City of Melbourne

0 5 10 20 30 40 50 metres

SCALE (at A4) (BUILDING MAP) 1:1,700
DATUM GDA 94, PROJECTION MGA Zone 55

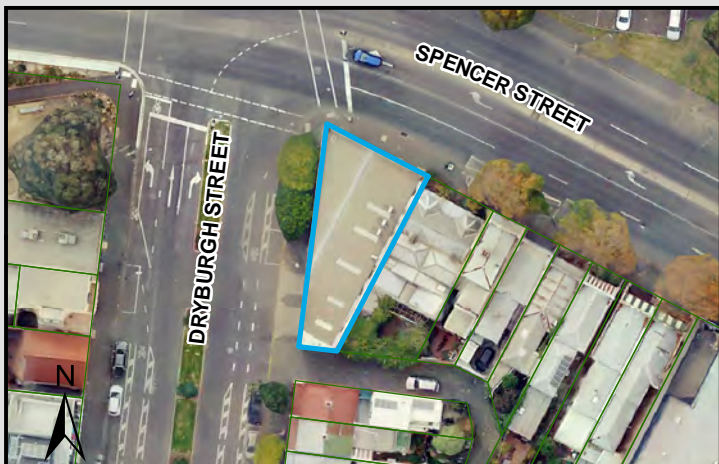
PROJECT: 18113718
DATE: 27 FEB 2019
DRAWN: TPC
CHECKED: IMK



Information contained on this drawing is the copyright of Golder Associates Pty. Ltd. Unauthorised use or reproduction of this plan either wholly or in part without written permission infringes copyright. © Golder Associates Pty. Ltd.

CoM Property ID: 108898

709-713 Spencer Street WEST MELBOURNE VIC 3003



LEGEND

 Parcel Boundary



Action Plan

EAO Recommendation

Apply EAO

EAO Comment

Site has been identified as being potentially contaminated in accordance with the Potentially Contaminated Land General Practice Note (DSE, 2005)

Site Use Summary

Current Land Use
Commercial

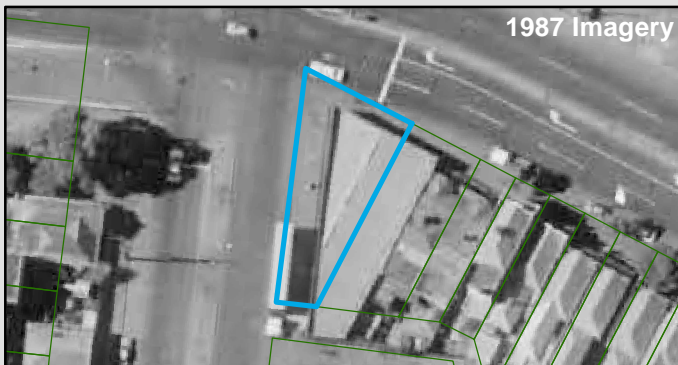
Historic Land Use
Industrial

Key Information Supporting EAO Decision

Potentially contaminating land use/s identified on site as listed in the DSE General Practice Note (2005): Automotive repair/engine works, Service station/fuel storage

Additional Considerations

Resources used to make decision



1987 Imagery



1895 MMBW

Resources used to make decision

Publicly available Melbourne Street Directories (Yellow Pages 1990, Urban Business Directory 1975/6 & 1984), Site inspection, Historical aerial photographs (1968/9 & 1987)

WEST MELBOURNE EAO - AMENDMENT C309 -
WEST MELBOURNE STRUCTURE PLAN:
PRELIMINARY LAND CONTAMINATION ASSESSMENT

CITY OF MELBOURNE

GIS ID: 8527

COPYRIGHT

Aerial Imagery copyright
City of Melbourne

0 5 10 20 30 40 50 metres

SCALE (at A4) (BUILDING MAP) 1:1,100
DATUM GDA 94, PROJECTION MGA Zone 55


PROJECT: 18113718
DATE: 27 FEB 2019
DRAWN: TPC
CHECKED: IMK



Information contained on this drawing is the copyright of Golder Associates Pty. Ltd. Unauthorised use or reproduction of this plan either wholly or in part without written permission infringes copyright. © Golder Associates Pty. Ltd.



LEGEND

 Parcel Boundary



Action Plan

EAO Recommendation

Apply EAO

EAO Comment

Historical industrial/commercial building with documented or likely past industrial use with possible high potential for contamination.

Resources used to make decision



Site Use Summary

Current Land Use
Other (unsure)

Historic Land Use
Other (unsure)



Key Information Supporting EAO Decision

Unknown current or past industrial use identified on site.

Resources used to make decision

Site inspection, Historical aerial photographs (1968/9 & 1987)

Additional Considerations

Currently vacant block. 1969 historic aerals show unknown storage at site.

WEST MELBOURNE EAO - AMENDMENT C309 -
WEST MELBOURNE STRUCTURE PLAN:
PRELIMINARY LAND CONTAMINATION ASSESSMENT

CITY OF MELBOURNE

GIS ID: 8644

COPYRIGHT

Aerial Imagery copyright
City of Melbourne

0 2.5 5 10 15 20 25 metres

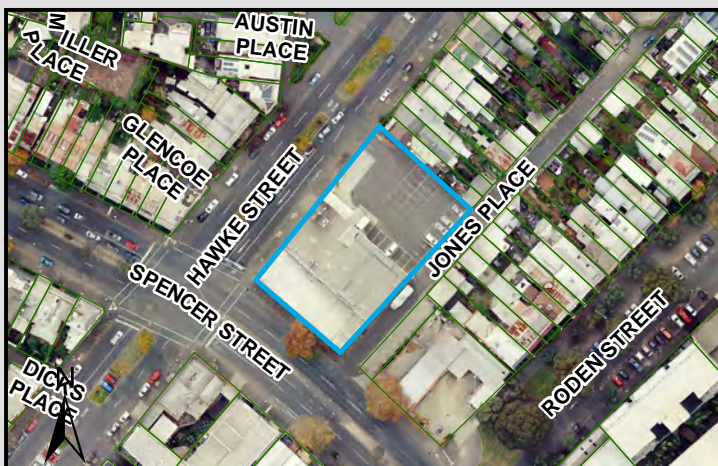
SCALE (at A4) (BUILDING MAP) 1:500
DATUM GDA 94, PROJECTION MGA Zone 55

PROJECT: 18113718
DATE: 27 FEB 2019
DRAWN: TPC
CHECKED: IMK



CoM Property ID: 108932

562-576 Spencer Street WEST MELBOURNE VIC 3003



LEGEND

 Parcel Boundary



Action Plan

EAO Recommendation

Apply EAO

EAO Comment

Historical industrial/commercial building with documented or likely past industrial use with possible high potential for contamination.

Site Use Summary

Current Land Use
Commercial

Historic Land Use
Industrial

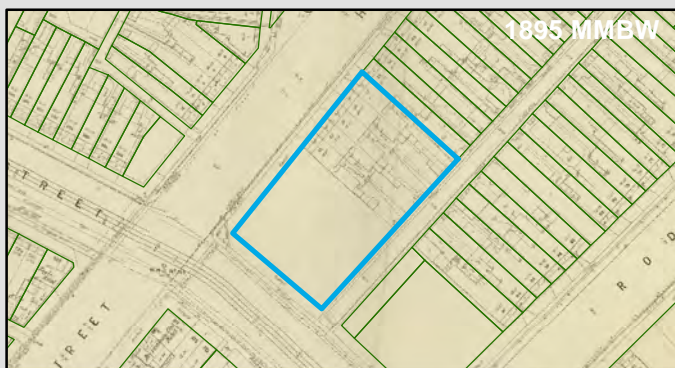
Key Information Supporting EAO Decision

Unknown current or past industrial use identified on site.

Additional Considerations

Brick building converted from a carpark into a warehouse. Built in the 1950's.

Resources used to make decision



Resources used to make decision

City of Melbourne interactive map (2019), West Melbourne Heritage Review Appendix 2 (May 2016), Site inspection, Historical aerial photographs (1968/9 & 1987)

WEST MELBOURNE EAO - AMENDMENT C309 -
WEST MELBOURNE STRUCTURE PLAN:
PRELIMINARY LAND CONTAMINATION ASSESSMENT

CITY OF MELBOURNE

GIS ID: 8697

COPYRIGHT

Aerial Imagery copyright
City of Melbourne

0 10 20 40 60 80 100 metres

SCALE (at A4) (BUILDING MAP) 1:2,400
DATUM GDA 94, PROJECTION MGA Zone 55

PROJECT: 18113718
DATE: 27 FEB 2019
DRAWN: TPC
CHECKED: IMK



CoM Property ID: 108934

550-558 Spencer Street WEST MELBOURNE VIC 3003



LEGEND

 Parcel Boundary



Action Plan

EAO Recommendation

Apply EAO

EAO Comment

Site has been identified as being potentially contaminated in accordance with the Potentially Contaminated Land General Practice Note (DSE, 2005)

Site Use Summary

Current Land Use
Commercial

Historic Land Use
Industrial

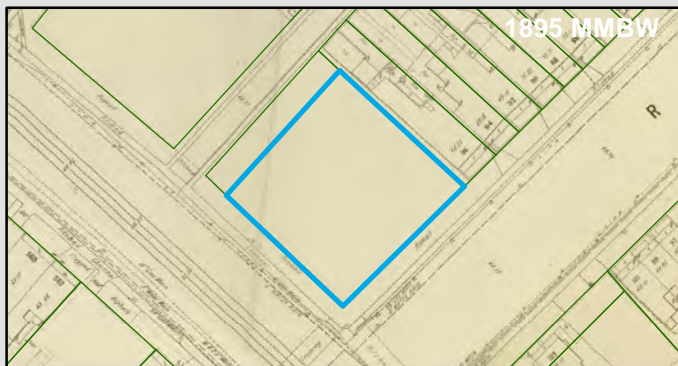
Key Information Supporting EAO Decision

Potentially contaminating land use/s identified on site as listed in the DSE General Practice Note (2005): Service station/fuel storage

Additional Considerations

1969 and 1987 aerials indicate a service station on site.

Resources used to make decision



Resources used to make decision

West Melbourne Heritage Review Appendix 2 (May 2016), Site inspection, Historical aerial photographs (1968/9 & 1987)

WEST MELBOURNE EAO - AMENDMENT C309 -
WEST MELBOURNE STRUCTURE PLAN:
PRELIMINARY LAND CONTAMINATION ASSESSMENT

CITY OF MELBOURNE

GIS ID: 8699

COPYRIGHT

Aerial Imagery copyright
City of Melbourne

0 5 10 20 30 40 50 metres

SCALE (at A4) (BUILDING MAP) 1:1,500
DATUM GDA 94, PROJECTION MGA Zone 55

PROJECT: 18113718
DATE: 27 FEB 2019
DRAWN: TPC
CHECKED: IMK



Information contained on this drawing is the copyright of Golder Associates Pty. Ltd. Unauthorised use or reproduction of this plan either wholly or in part without written permission infringes copyright. © Golder Associates Pty. Ltd.

CoM Property ID: 108935

544 Spencer Street WEST MELBOURNE VIC 3003



LEGEND

 Parcel Boundary



Action Plan

EAO Recommendation

Apply EAO

EAO Comment

Historical industrial/commercial building with documented or likely past industrial use with possible high potential for contamination.

Site Use Summary

Current Land Use
Commercial

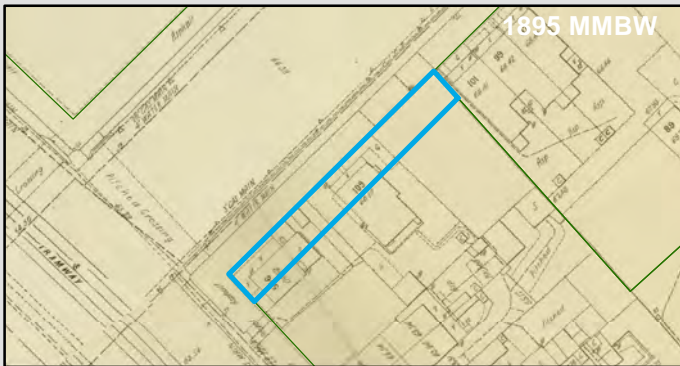
Historic Land Use
Industrial

Key Information Supporting EAO Decision

Unknown current or past industrial use identified on site.

Additional Considerations

Resources used to make decision



Resources used to make decision

West Melbourne Heritage Review Appendix 2 (May 2016), Site inspection, Historical aerial photographs (1968/9 & 1987)

WEST MELBOURNE EAO - AMENDMENT C309 -
WEST MELBOURNE STRUCTURE PLAN:
PRELIMINARY LAND CONTAMINATION ASSESSMENT

CITY OF MELBOURNE

GIS ID: 6696

COPYRIGHT

Aerial Imagery copyright
City of Melbourne

0 5 10 20 30 40 50 metres

SCALE (at A4) (BUILDING MAP) 1:1,100
DATUM GDA 94, PROJECTION MGA Zone 55

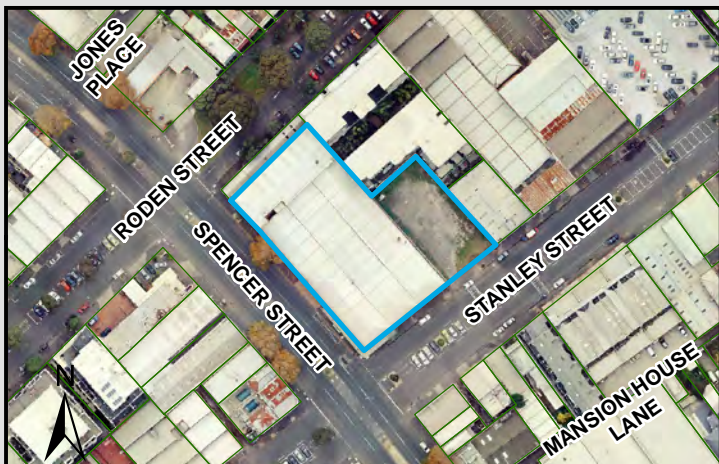
PROJECT: 18113718
DATE: 27 FEB 2019
DRAWN: TPC
CHECKED: IMK



Information contained on this drawing is the copyright of Golder Associates Pty. Ltd. Unauthorised use or reproduction of this plan either wholly or in part without written permission infringes copyright. © Golder Associates Pty. Ltd.

CoM Property ID: 108936

512-542 Spencer Street WEST MELBOURNE VIC 3003



LEGEND

 Parcel Boundary



Action Plan

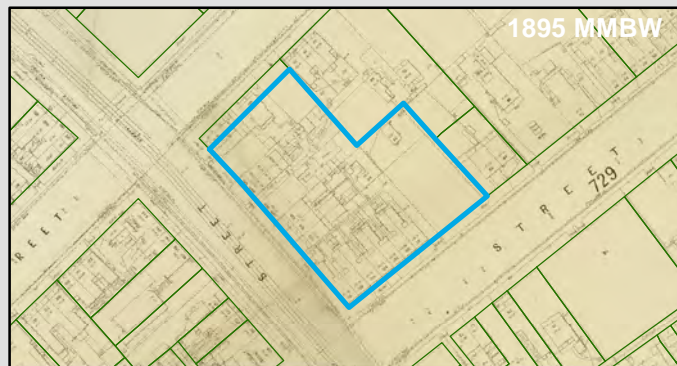
EAO Recommendation

Apply EAO

EAO Comment

Historical industrial/commercial building with documented or likely past industrial use with possible high potential for contamination.

Resources used to make decision



Site Use Summary

Current Land Use
Commercial

Historic Land Use
Industrial

Key Information Supporting EAO Decision

Unknown current or past industrial use identified on site.

Additional Considerations

Brick warehouse.

Resources used to make decision

West Melbourne Heritage Review Appendix 2 (May 2016), Site inspection, Historical aerial photographs (1968/9 & 1987)

WEST MELBOURNE EAO - AMENDMENT C309 -
WEST MELBOURNE STRUCTURE PLAN:
PRELIMINARY LAND CONTAMINATION ASSESSMENT

CITY OF MELBOURNE

GIS ID: 7742

COPYRIGHT

Aerial Imagery copyright
City of Melbourne

0 12.5 25 50 75 100 125 metres

SCALE (at A4) (BUILDING MAP) 1:2,800
DATUM GDA 94, PROJECTION MGA Zone 55

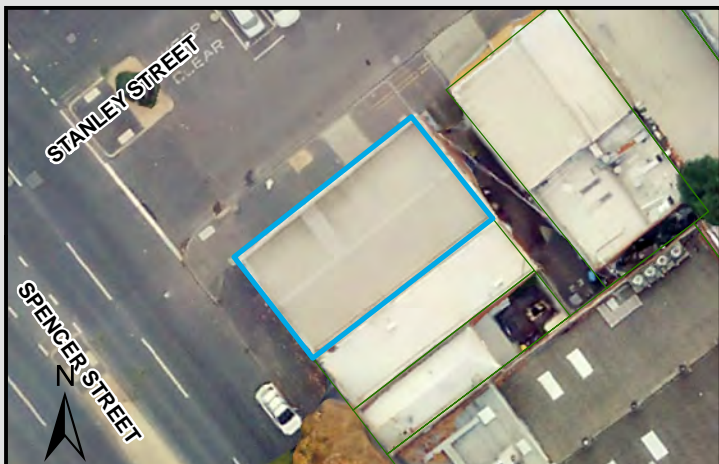
PROJECT: 18113718
DATE: 27 FEB 2019
DRAWN: TPC
CHECKED: IMK



Information contained on this drawing is the copyright of Golder Associates Pty. Ltd. Unauthorised use or reproduction of this plan either wholly or in part without written permission infringes copyright. © Golder Associates Pty. Ltd.

CoM Property ID: 108937

506-508 Spencer Street WEST MELBOURNE VIC 3003



LEGEND

 Parcel Boundary

Action Plan

EAO Recommendation

Apply EAO

EAO Comment

Historical industrial/commercial building with documented or likely past industrial use with possible high potential for contamination.

Site Use Summary

Current Land Use
Commercial

Historic Land Use
Commercial

Key Information Supporting EAO Decision

Unknown current or past industrial use identified on site.

Additional Considerations

Former underwater equipment suppliers, marble manufacturers, and electrical engineers "Gilchrist W R & Sons".

Resources used to make decision



Resources used to make decision

West Melbourne Heritage Review Appendix 2 (May 2016), Site inspection, Historical aerial photographs (1968/9 & 1987)

WEST MELBOURNE EAO - AMENDMENT C309 -
WEST MELBOURNE STRUCTURE PLAN:
PRELIMINARY LAND CONTAMINATION ASSESSMENT

CITY OF MELBOURNE

GIS ID: 7753

COPYRIGHT

Aerial Imagery copyright
City of Melbourne

0 3 6 12 18 24 30 metres

SCALE (at A4) (BUILDING MAP) 1:600
DATUM GDA 94, PROJECTION MGA Zone 55

PROJECT: 18113718
DATE: 27 FEB 2019
DRAWN: TPC
CHECKED: IMK



Information contained on this drawing is the copyright of Golder Associates Pty. Ltd. Unauthorised use or reproduction of this plan either wholly or in part without written permission infringes copyright. © Golder Associates Pty. Ltd.

CoM Property ID: 108940

496-500 Spencer Street WEST MELBOURNE VIC 3003



LEGEND

 Parcel Boundary



Action Plan

EAO Recommendation

Apply EAO

EAO Comment

Site is subject to potential contamination from an offsite source.

Resources used to make decision



Site Use Summary

Current Land Use
Commercial

Historic Land Use
Commercial



Key Information Supporting EAO Decision

No current or previous potentially contaminating land uses identified on site.

Additional Considerations

Resources used to make decision

West Melbourne Heritage Review Appendix 2 (May 2016), Site inspection, Historical aerial photographs (1968/9 & 1987)

WEST MELBOURNE EAO - AMENDMENT C309 -
WEST MELBOURNE STRUCTURE PLAN:
PRELIMINARY LAND CONTAMINATION ASSESSMENT

CITY OF MELBOURNE

GIS ID: 7756

COPYRIGHT

Aerial Imagery copyright
City of Melbourne

0 5 10 20 30 40 50 metres

SCALE (at A4) (BUILDING MAP) 1:1,000
DATUM GDA 94, PROJECTION MGA Zone 55

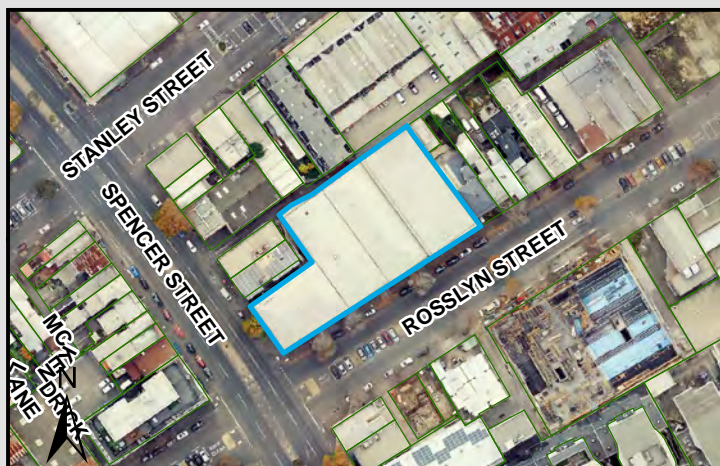
PROJECT: 18113718
DATE: 27 FEB 2019
DRAWN: TPC
CHECKED: IMK



GOLDER

CoM Property ID: 108942

478-486 Spencer Street WEST MELBOURNE VIC 3003



LEGEND

 Parcel Boundary



Action Plan

EAO Recommendation

Apply EAO

EAO Comment

Historical industrial/commercial building with documented or likely past industrial use with possible high potential for contamination.

Site Use Summary

Current Land Use
Commercial

Historic Land Use
Industrial

Key Information Supporting EAO Decision

Unknown current or past industrial use identified on site.

Additional Considerations

Brick warehouse with basement. Built in the 1960's.

Resources used to make decision



Resources used to make decision

West Melbourne Heritage Review Appendix 2 (May 2016), Site inspection, Historical aerial photographs (1968/9 & 1987)

WEST MELBOURNE EAO - AMENDMENT C309 -
WEST MELBOURNE STRUCTURE PLAN:
PRELIMINARY LAND CONTAMINATION ASSESSMENT

CITY OF MELBOURNE

GIS ID: 7758

COPYRIGHT

Aerial Imagery copyright
City of Melbourne

0 12.5 25 50 75 100 125 metres

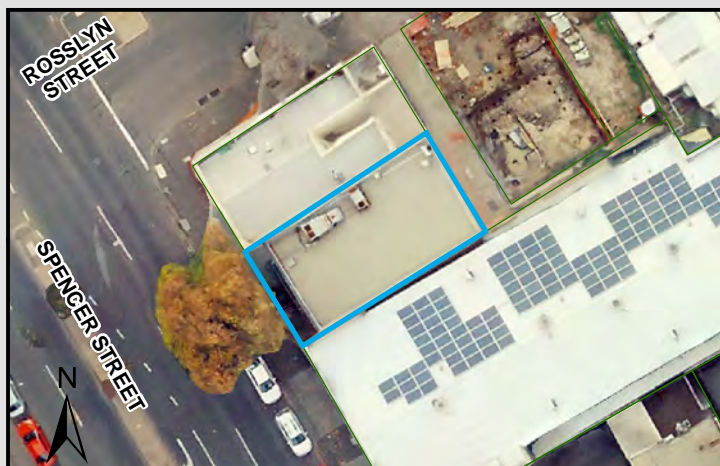
SCALE (at A4) (BUILDING MAP) 1:2,600
DATUM GDA 94, PROJECTION MGA Zone 55

PROJECT: 18113718
DATE: 27 FEB 2019
DRAWN: TPC
CHECKED: IMK



CoM Property ID: 108944

464-466 Spencer Street WEST MELBOURNE VIC 3003



LEGEND

 Parcel Boundary

Action Plan

EAO Recommendation

Apply EAO

EAO Comment

Site has been identified as being potentially contaminated in accordance with the Potentially Contaminated Land General Practice Note (DSE, 2005)

Site Use Summary

Current Land Use
Industrial

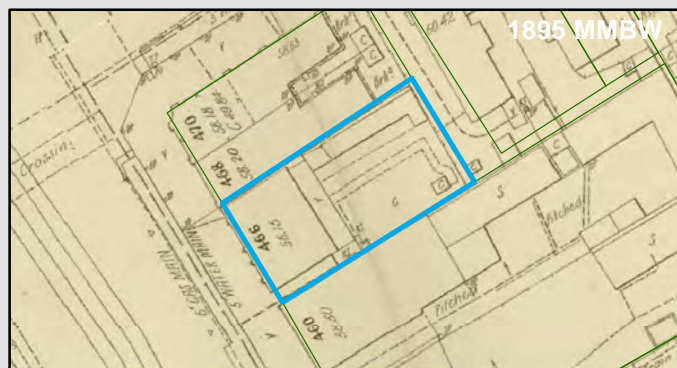
Historic Land Use
Other (unsure)

Key Information Supporting EAO Decision

Potentially contaminating land use/s identified on site as listed in the DSE General Practice Note (2005): Dry Cleaning

Additional Considerations

Resources used to make decision



Resources used to make decision

Site inspection, Historical aerial photographs (1968/9 & 1987), MMBW Maps (1895)

WEST MELBOURNE EAO - AMENDMENT C309 -
WEST MELBOURNE STRUCTURE PLAN:
PRELIMINARY LAND CONTAMINATION ASSESSMENT

CITY OF MELBOURNE

GIS ID: 7798

COPYRIGHT

Aerial Imagery copyright
City of Melbourne

0 3.5 7 14 21 28 35 metres

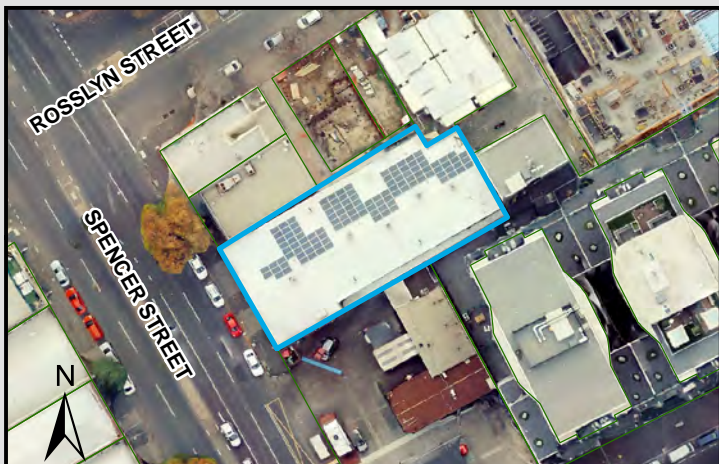
SCALE (at A4) (BUILDING MAP) 1:700
DATUM GDA 94, PROJECTION MGA Zone 55

PROJECT: 18113718
DATE: 27 FEB 2019
DRAWN: TPC
CHECKED: IMK



CoM Property ID: 108945

454-462 Spencer Street WEST MELBOURNE VIC 3003



LEGEND

 Parcel Boundary

Action Plan

EAO Recommendation

Apply EAO

EAO Comment

Site has been identified as being potentially contaminated in accordance with the Potentially Contaminated Land General Practice Note (DSE, 2005)

Site Use Summary

Current Land Use
Commercial

Historic Land Use
Industrial

Key Information Supporting EAO Decision

Potentially contaminating land use/s identified on site as listed in the DSE General Practice Note (2005): Printing shops

Additional Considerations

Resources used to make decision



Resources used to make decision

Site inspection, Historical aerial photographs (1968/9 & 1987), MMBW Maps (1895)

WEST MELBOURNE EAO - AMENDMENT C309 -
WEST MELBOURNE STRUCTURE PLAN:
PRELIMINARY LAND CONTAMINATION ASSESSMENT

CITY OF MELBOURNE

GIS ID: 7799

COPYRIGHT

Aerial Imagery copyright
City of Melbourne

0 5 10 20 30 40 50 metres

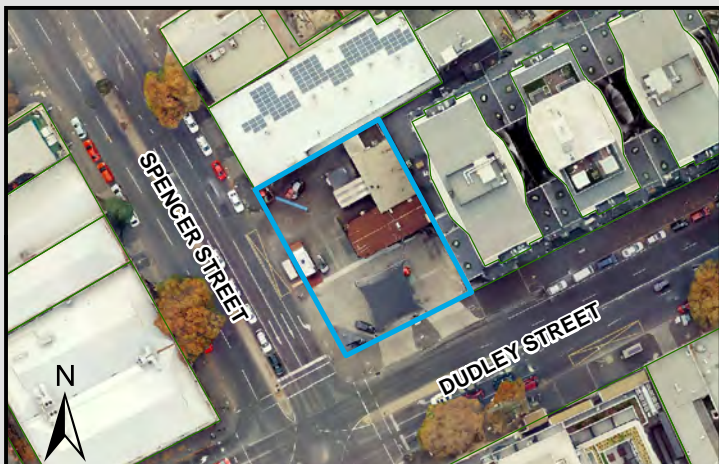
SCALE (at A4) (BUILDING MAP) 1:1,300
DATUM GDA 94, PROJECTION MGA Zone 55

PROJECT: 18113718
DATE: 27 FEB 2019
DRAWN: TPC
CHECKED: IMK



CoM Property ID: 108946

438-452 Spencer Street WEST MELBOURNE VIC 3003



LEGEND

 Parcel Boundary



Action Plan

EAO Recommendation

Apply EAO

EAO Comment

Site has been identified as being potentially contaminated in accordance with the Potentially Contaminated Land General Practice Note (DSE, 2005)

Site Use Summary

Current Land Use
Industrial

Historic Land Use
Industrial

Key Information Supporting EAO Decision

Potentially contaminating land use/s identified on site as listed in the DSE General Practice Note (2005): Fuel Storage (Medium Potential)

Additional Considerations

Likely old petrol station. UST or Filling at the site indicates potential for contamination.

Resources used to make decision



Resources used to make decision

Site inspection, Historical aerial photographs (1968/9 & 1987)

WEST MELBOURNE EAO - AMENDMENT C309 -
WEST MELBOURNE STRUCTURE PLAN:
PRELIMINARY LAND CONTAMINATION ASSESSMENT

CITY OF MELBOURNE

GIS ID: 7800

COPYRIGHT

Aerial Imagery copyright
City of Melbourne

0 5 10 20 30 40 50 metres

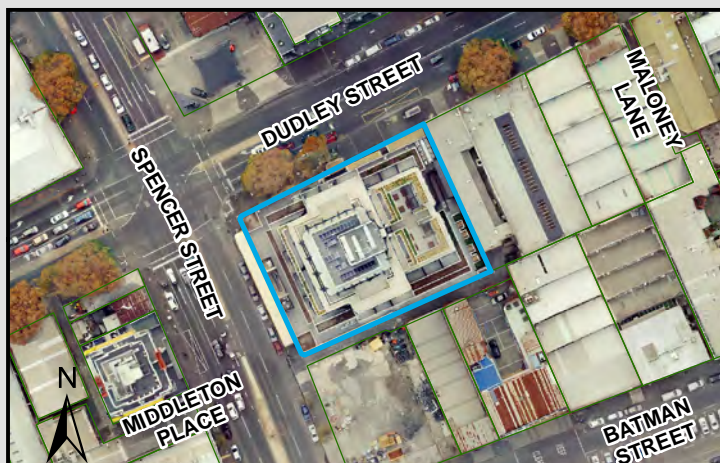
SCALE (at A4) (BUILDING MAP) 1:1,600
DATUM GDA 94, PROJECTION MGA Zone 55

PROJECT: 18113718
DATE: 27 FEB 2019
DRAWN: TPC
CHECKED: IMK



CoM Property ID: 108947

57-77 Dudley Street WEST MELBOURNE VIC 3003



LEGEND

 Parcel Boundary

Action Plan

EAO Recommendation

Apply EAO

EAO Comment

Site has been identified as being potentially contaminated in accordance with the Potentially Contaminated Land General Practice Note (DSE, 2005)

Site Use Summary

Current Land Use
Commercial

Historic Land Use
Industrial

Key Information Supporting EAO Decision

Potentially contaminating land use/s identified on site as listed in the DSE General Practice Note (2005): Glass Manufacture

Additional Considerations

Formerly 'Australian Glass Manufacturers Co. Ltd.'.



Resources used to make decision



Resources used to make decision

West Melbourne Heritage Review Appendix 2 (May 2016), Site inspection, Historical aerial photographs (1968/9 & 1987)

WEST MELBOURNE EAO - AMENDMENT C309 -
WEST MELBOURNE STRUCTURE PLAN:
PRELIMINARY LAND CONTAMINATION ASSESSMENT

CITY OF MELBOURNE

GIS ID: 7492

COPYRIGHT

Aerial Imagery copyright
City of Melbourne

0 10 20 40 60 80 100 metres

SCALE (at A4) (BUILDING MAP) 1:2,000
DATUM GDA 94, PROJECTION MGA Zone 55

PROJECT: 18113718
DATE: 27 FEB 2019
DRAWN: TPC
CHECKED: IMK



CoM Property ID: 108948

404-418 Spencer Street WEST MELBOURNE VIC 3003



LEGEND

 Parcel Boundary



Action Plan

EAO Recommendation

Apply EAO

EAO Comment

Site has been issued with a Statement of Environmental Audit with Conditions that require ongoing management for sensitive uses. (Carms No. 58989-1)

Site Use Summary

Current Land Use
Industrial

Historic Land Use
Industrial

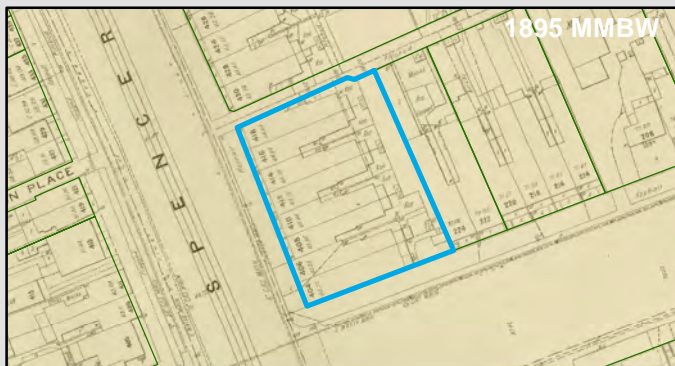
Key Information Supporting EAO Decision

Potentially contaminating land use/s identified on site as listed in the DSE General Practice Note (2005): Dry Cleaning

Additional Considerations

Site is currently under environmental investigation. Groundwater wells present across the site.

Resources used to make decision



Resources used to make decision

Site inspection, Historical aerial photographs (1968/9 & 1987), EPA Audits (53X and 53V)

WEST MELBOURNE EAO - AMENDMENT C309 -
WEST MELBOURNE STRUCTURE PLAN:
PRELIMINARY LAND CONTAMINATION ASSESSMENT

CITY OF MELBOURNE

GIS ID: 7493

COPYRIGHT

Aerial Imagery copyright
City of Melbourne

0 5 10 20 30 40 50 metres

SCALE (at A4) (BUILDING MAP) 1:1,500
DATUM GDA 94, PROJECTION MGA Zone 55

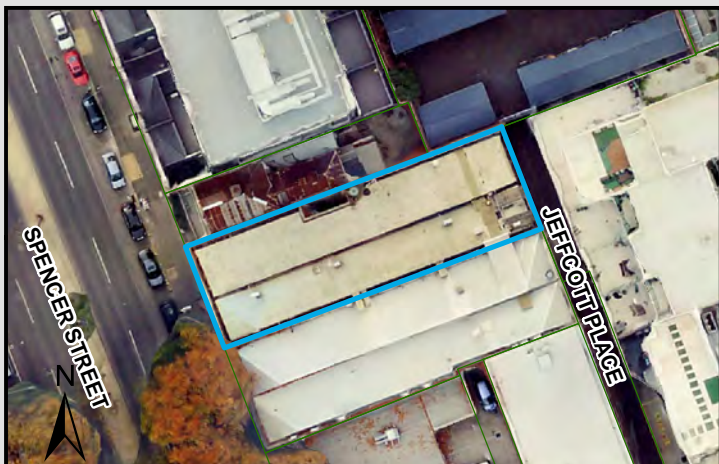
PROJECT: 18113718
DATE: 27 FEB 2019
DRAWN: TPC
CHECKED: IMK



Information contained on this drawing is the copyright of Golder Associates Pty. Ltd. Unauthorised use or reproduction of this plan either wholly or in part without written permission infringes copyright. © Golder Associates Pty. Ltd.

CoM Property ID: 108952

378-382 Spencer Street WEST MELBOURNE VIC 3003



LEGEND

 Parcel Boundary

Action Plan

EAO Recommendation

Apply EAO

EAO Comment

Historical industrial/commercial building with documented or likely past industrial use with possible high potential for contamination.

Resources used to make decision



Site Use Summary

Current Land Use
Commercial

Historic Land Use
Commercial

Key Information Supporting EAO Decision

Unknown current or past industrial use identified on site.

Additional Considerations

Brick building built in the 1950's as a warehouse for J & W Cosmetics.

Resources used to make decision

City of Melbourne interactive map (2019), West Melbourne Heritage Review Appendix 2 (May 2016), Site inspection, Historical aerial photographs (1968/9 & 1987)

WEST MELBOURNE EAO - AMENDMENT C309 -
WEST MELBOURNE STRUCTURE PLAN:
PRELIMINARY LAND CONTAMINATION ASSESSMENT

CITY OF MELBOURNE

GIS ID: 8303

COPYRIGHT

Aerial Imagery copyright
City of Melbourne

0 4.5 9 18 27 36 45 metres

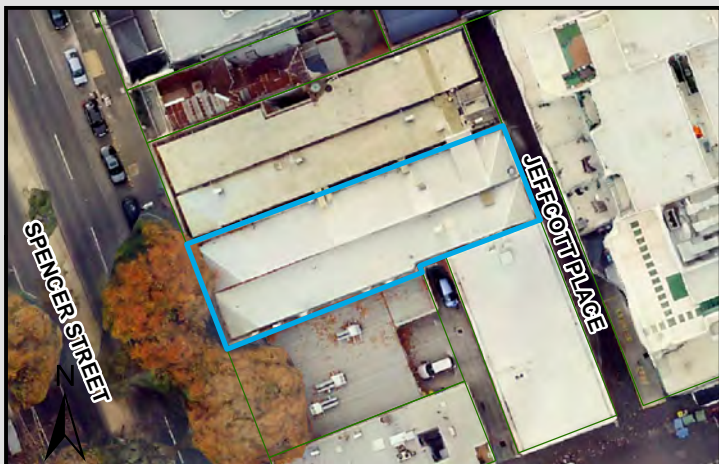
SCALE (at A4) (BUILDING MAP) 1:900
DATUM GDA 94, PROJECTION MGA Zone 55

PROJECT: 18113718
DATE: 27 FEB 2019
DRAWN: TPC
CHECKED: IMK



CoM Property ID: 108953

372-376 Spencer Street WEST MELBOURNE VIC 3003



LEGEND

 Parcel Boundary

Action Plan

EAO Recommendation

Apply EAO

EAO Comment

Historical industrial/commercial building with documented or likely past industrial use with possible high potential for contamination.

Site Use Summary

Current Land Use
Commercial

Historic Land Use
Commercial

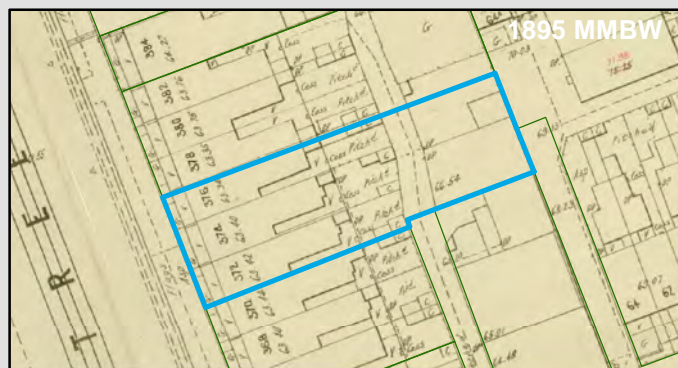
Key Information Supporting EAO Decision

Unknown current or past industrial use identified on site.

Additional Considerations

Brick building built in the 1950's as a warehouse for J & W Cosmetics.

Resources used to make decision



Resources used to make decision

City of Melbourne interactive map (2019), West Melbourne Heritage Review Appendix 2 (May 2016), Site inspection, Historical aerial photographs (1968/9 & 1987)

WEST MELBOURNE EAO - AMENDMENT C309 -
WEST MELBOURNE STRUCTURE PLAN:
PRELIMINARY LAND CONTAMINATION ASSESSMENT

CITY OF MELBOURNE

GIS ID: 8341

COPYRIGHT

Aerial Imagery copyright
City of Melbourne

0 4.5 9 18 27 36 45 metres

SCALE (at A4) (BUILDING MAP) 1:900
DATUM GDA 94, PROJECTION MGA Zone 55


PROJECT: 18113718
DATE: 27 FEB 2019
DRAWN: TPC
CHECKED: IMK



Information contained on this drawing is the copyright of Golder Associates Pty. Ltd. Unauthorised use or reproduction of this plan either wholly or in part without written permission infringes copyright. © Golder Associates Pty. Ltd.



LEGEND

 Parcel Boundary



Action Plan

EAO Recommendation

Apply EAO

EAO Comment

Historical industrial/commercial building with documented or likely past industrial use with possible high potential for contamination.

Site Use Summary

Current Land Use
Commercial

Historic Land Use
Industrial

Key Information Supporting EAO Decision

Unknown current or past industrial use identified on site.

Additional Considerations

Former warehouse.

Resources used to make decision



Resources used to make decision

West Melbourne Heritage Review Appendix 2 (May 2016), Site inspection, Historical aerial photographs (1968/9 & 1987)

WEST MELBOURNE EAO - AMENDMENT C309 -
WEST MELBOURNE STRUCTURE PLAN:
PRELIMINARY LAND CONTAMINATION ASSESSMENT

CITY OF MELBOURNE

GIS ID: 8304

COPYRIGHT
Aerial Imagery copyright
City of Melbourne

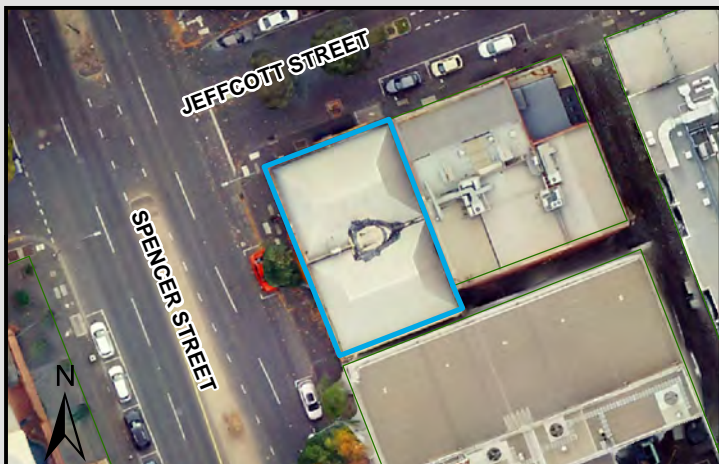
0 3.5 7 14 21 28 35 metres
SCALE (at A4) (BUILDING MAP) 1:700
DATUM GDA 94, PROJECTION MGA Zone 55
PROJECT: 18113718
DATE: 27 FEB 2019
DRAWN: TPC
CHECKED: IMK



Information contained on this drawing is the copyright of Golder Associates Pty. Ltd. Unauthorised use or reproduction of this plan either wholly or in part without written permission infringes copyright. © Golder Associates Pty. Ltd.

CoM Property ID: 108956

350-358 Spencer Street WEST MELBOURNE VIC 3003



LEGEND

 Parcel Boundary



Action Plan

EAO Recommendation

Apply EAO

EAO Comment

Site has been identified as being potentially contaminated in accordance with the Potentially Contaminated Land General Practice Note (DSE, 2005)

Site Use Summary

Current Land Use
Industrial

Historic Land Use
Industrial

Key Information Supporting EAO Decision

Potentially contaminating land use/s identified on site as listed in the DSE General Practice Note (2005): Service station/fuel storage, Automotive repair/engine works

Additional Considerations

Resources used to make decision



Resources used to make decision

West Melbourne Heritage Review Appendix 2 (May 2016), Mahlstedt fire insurance maps (CBD 1923-25), Publically available Melbourne Street Directories (Yellow Pages 1990, Urban Business Directory 1975/6 & 1984), Site inspection, Historical aerial photographs (1968/9 & 1987)

WEST MELBOURNE EAO - AMENDMENT C309 -
WEST MELBOURNE STRUCTURE PLAN:
PRELIMINARY LAND CONTAMINATION ASSESSMENT

CITY OF MELBOURNE

GIS ID: 8316

COPYRIGHT

Aerial Imagery copyright
City of Melbourne

0 4.5 9 18 27 36 45 metres

SCALE (at A4) (BUILDING MAP) 1:900
DATUM GDA 94, PROJECTION MGA Zone 55

PROJECT: 18113718
DATE: 27 FEB 2019
DRAWN: TPC
CHECKED: IMK



CoM Property ID: 108957

328-348 Spencer Street WEST MELBOURNE VIC 3003



LEGEND

 Parcel Boundary



Action Plan

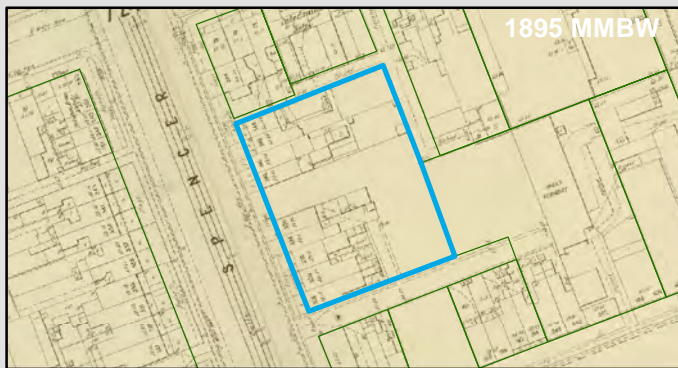
EAO Recommendation

Apply EAO

EAO Comment

Historical industrial/commercial building with documented or likely past industrial use with possible high potential for contamination.

Resources used to make decision



Site Use Summary

Current Land Use
Commercial

Historic Land Use
Other (unsure)

Key Information Supporting EAO Decision

Additional Considerations

1895 plans indicate residential use. 1969 aerials show new building of non-typical residential shape. Company name listed - "Woodall Duckham". Likely gas and foundry manufacturers.

Resources used to make decision

City of Melbourne interactive map, Site inspection, Historical aerial photographs (1968/9 & 1987), MMBW Maps (1895)

WEST MELBOURNE EAO - AMENDMENT C309 -
WEST MELBOURNE STRUCTURE PLAN:
PRELIMINARY LAND CONTAMINATION ASSESSMENT

CITY OF MELBOURNE

GIS ID: 8317

COPYRIGHT

Aerial Imagery copyright
City of Melbourne

0 5 10 20 30 40 50 metres

SCALE (at A4) (BUILDING MAP) 1:1,900
DATUM GDA 94, PROJECTION MGA Zone 55

PROJECT: 18113718
DATE: 27 FEB 2019
DRAWN: TPC
CHECKED: IMK



Information contained on this drawing is the copyright of Golder Associates Pty. Ltd. Unauthorised use or reproduction of this plan either wholly or in part without written permission infringes copyright. © Golder Associates Pty. Ltd.

CoM Property ID: 108997

17 Stanley Street WEST MELBOURNE VIC 3003



LEGEND

 Parcel Boundary



Action Plan

EAO Recommendation

Apply EAO

EAO Comment

Site has been identified as being potentially contaminated in accordance with the Potentially Contaminated Land General Practice Note (DSE, 2005)

Resources used to make decision



Site Use Summary

Current Land Use
Industrial

Historic Land Use
Industrial



Key Information Supporting EAO Decision

Potentially contaminating land use/s identified on site as listed in the DSE General Practice Note (2005): Automotive repair/engine works

Additional Considerations

Resources used to make decision

Site inspection, Historical aerial photographs (1968/9 & 1987), MMBW Maps (1895)

WEST MELBOURNE EAO - AMENDMENT C309 -
WEST MELBOURNE STRUCTURE PLAN:
PRELIMINARY LAND CONTAMINATION ASSESSMENT

CITY OF MELBOURNE

GIS ID: 7743

COPYRIGHT

Aerial Imagery copyright
City of Melbourne

0 3.5 7 14 21 28 35 metres

SCALE (at A4) (BUILDING MAP) 1:700
DATUM GDA 94, PROJECTION MGA Zone 55

PROJECT: 18113718
DATE: 27 FEB 2019
DRAWN: TPC
CHECKED: IMK



Information contained on this drawing is the copyright of Golder Associates Pty. Ltd. Unauthorised use or reproduction of this plan either wholly or in part without written permission infringes copyright. © Golder Associates Pty. Ltd.

CoM Property ID: 108998

19 Stanley Street WEST MELBOURNE VIC 3003



LEGEND

 Parcel Boundary

Action Plan

EAO Recommendation

Apply EAO

EAO Comment

Site is subject to potential contamination from an offsite source.

Site Use Summary

Current Land Use
Commercial

Historic Land Use
Commercial

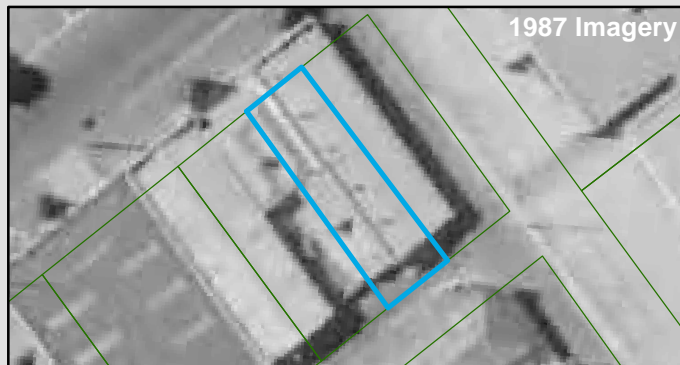
Key Information Supporting EAO Decision

No current or previous potentially contaminating land uses identified on site.

Additional Considerations

Brick office building built in 1990.

Resources used to make decision



Resources used to make decision

West Melbourne Heritage Review Appendix 2 (May 2016), Site inspection, Historical aerial photographs (1968/9 & 1987)

WEST MELBOURNE EAO - AMENDMENT C309 -
WEST MELBOURNE STRUCTURE PLAN:
PRELIMINARY LAND CONTAMINATION ASSESSMENT

CITY OF MELBOURNE

GIS ID: 7744

COPYRIGHT

Aerial Imagery copyright
City of Melbourne

0 3.5 7 14 21 28 35 metres

SCALE (at A4) (BUILDING MAP) 1:700
DATUM GDA 94, PROJECTION MGA Zone 55

PROJECT: 18113718
DATE: 27 FEB 2019
DRAWN: TPC
CHECKED: IMK



Information contained on this drawing is the copyright of Golder Associates Pty. Ltd. Unauthorised use or reproduction of this plan either wholly or in part without written permission infringes copyright. © Golder Associates Pty. Ltd.

CoM Property ID: 108999

21-23 Stanley Street WEST MELBOURNE VIC 3003



LEGEND

 Parcel Boundary



Action Plan

EAO Recommendation

Apply EAO

EAO Comment

Historical industrial/commercial building with documented or likely past industrial use with possible high potential for contamination.

Site Use Summary

Current Land Use
Commercial

Historic Land Use
Industrial

Key Information Supporting EAO Decision

Unknown current or past industrial use identified on site.

Additional Considerations

Brick industrial building built in the 1960's.

Resources used to make decision



Resources used to make decision

West Melbourne Heritage Review Appendix 2 (May 2016), Site inspection, Historical aerial photographs (1968/9 & 1987), City of Melbourne interactive map (2019)

WEST MELBOURNE EAO - AMENDMENT C309 -
WEST MELBOURNE STRUCTURE PLAN:
PRELIMINARY LAND CONTAMINATION ASSESSMENT

CITY OF MELBOURNE

GIS ID: 7745

COPYRIGHT

Aerial Imagery copyright
City of Melbourne

0 3.5 7 14 21 28 35 metres

SCALE (at A4) (BUILDING MAP) 1:700
DATUM GDA 94, PROJECTION MGA Zone 55

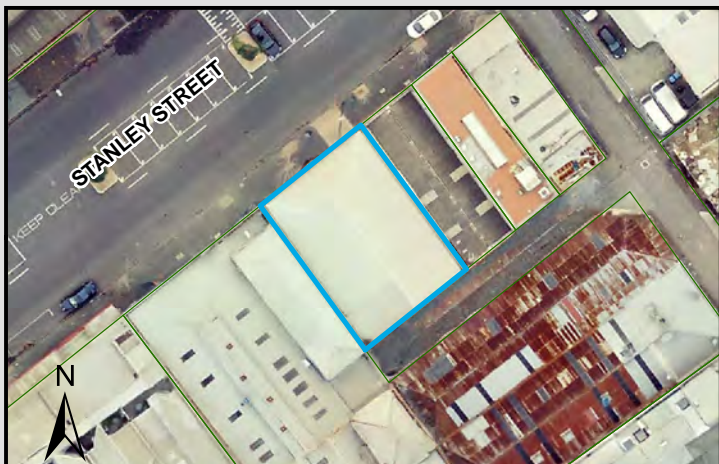
PROJECT: 18113718
DATE: 27 FEB 2019
DRAWN: TPC
CHECKED: IMK



Information contained on this drawing is the copyright of Golder Associates Pty. Ltd. Unauthorised use or reproduction of this plan either wholly or in part without written permission infringes copyright. © Golder Associates Pty. Ltd.

CoM Property ID: 109000

25-29 Stanley Street WEST MELBOURNE VIC 3003



LEGEND

 Parcel Boundary



Action Plan

EAO Recommendation

Apply EAO

EAO Comment

Historical industrial/commercial building with documented or likely past industrial use with possible high potential for contamination.

Resources used to make decision



Site Use Summary

Current Land Use
Commercial

Historic Land Use
Industrial



Key Information Supporting EAO Decision

Unknown current or past industrial use identified on site.

Additional Considerations

Brick industrial warehouse built in the 1970's.

Resources used to make decision

West Melbourne Heritage Review Appendix 2 (May 2016), Site inspection, Historical aerial photographs (1968/9 & 1987)

WEST MELBOURNE EAO - AMENDMENT C309 -
WEST MELBOURNE STRUCTURE PLAN:
PRELIMINARY LAND CONTAMINATION ASSESSMENT

CITY OF MELBOURNE

GIS ID: 7746

COPYRIGHT

Aerial Imagery copyright
City of Melbourne

0 4.5 9 18 27 36 45 metres

SCALE (at A4) (BUILDING MAP) 1:900
DATUM GDA 94, PROJECTION MGA Zone 55

PROJECT: 18113718
DATE: 27 FEB 2019
DRAWN: TPC
CHECKED: IMK



CoM Property ID: 109001

31-47 Stanley Street WEST MELBOURNE VIC 3003



LEGEND

 Parcel Boundary



Action Plan

EAO Recommendation

Apply EAO

EAO Comment

Site has been identified as being potentially contaminated in accordance with the Potentially Contaminated Land General Practice Note (DSE, 2005)

Site Use Summary

Current Land Use
Industrial

Historic Land Use
Industrial

Key Information Supporting EAO Decision

Potentially contaminating land use/s identified on site as listed in the DSE General Practice Note (2005): Automotive repair/engine works, Breweries/distilleries

Additional Considerations

Resources used to make decision



Resources used to make decision

West Melbourne Heritage Review Appendix 2 (May 2016), Site inspection, Historical aerial photographs (1968/9 & 1987), MMBW Maps (1895)

WEST MELBOURNE EAO - AMENDMENT C309 -
WEST MELBOURNE STRUCTURE PLAN:
PRELIMINARY LAND CONTAMINATION ASSESSMENT

CITY OF MELBOURNE

GIS ID: 7747

COPYRIGHT

Aerial Imagery copyright
City of Melbourne

0 5 10 20 30 40 50 metres

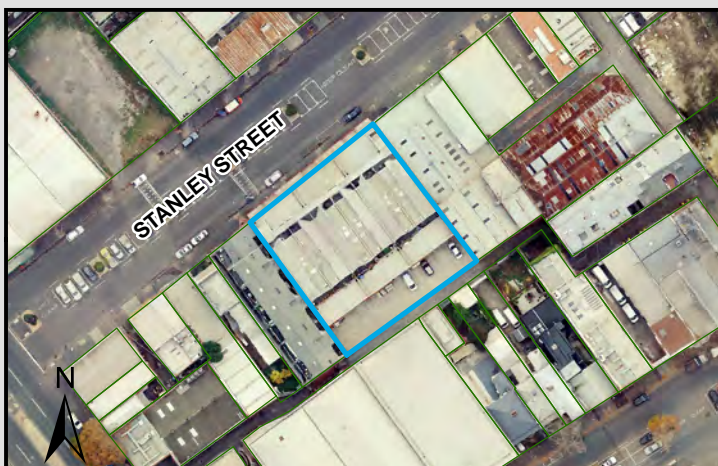
SCALE (at A4) (BUILDING MAP) 1:1,600
DATUM GDA 94, PROJECTION MGA Zone 55

PROJECT: 18113718
DATE: 27 FEB 2019
DRAWN: TPC
CHECKED: IMK



CoM Property ID: 109002

49-59 Stanley Street WEST MELBOURNE VIC 3003



LEGEND

 Parcel Boundary



Action Plan

EAO Recommendation

Apply EAO

EAO Comment

Site is subject to potential contamination from an offsite source.

Resources used to make decision



Site Use Summary

Current Land Use
Commercial

Historic Land Use
Residential



Key Information Supporting EAO Decision

No current or previous potentially contaminating land uses identified on site.

Additional Considerations

1969 aerial shows site was residential. Current use is residential/commercial.

Resources used to make decision

West Melbourne Heritage Review Appendix 2 (May 2016), Site inspection, Historical aerial photographs (1968/9 & 1987)

WEST MELBOURNE EAO - AMENDMENT C309 -
WEST MELBOURNE STRUCTURE PLAN:
PRELIMINARY LAND CONTAMINATION ASSESSMENT

CITY OF MELBOURNE

GIS ID: 7748

COPYRIGHT

Aerial Imagery copyright
City of Melbourne

0 5 10 20 30 40 50 metres

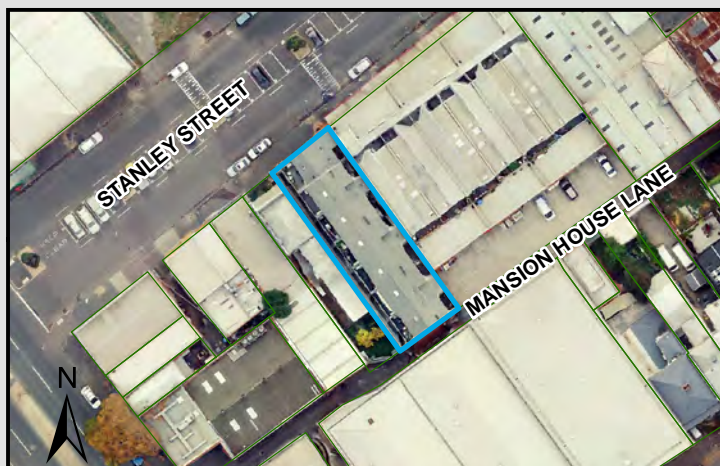
SCALE (at A4) (BUILDING MAP) 1:1,900
DATUM GDA 94, PROJECTION MGA Zone 55

PROJECT: 18113718
DATE: 27 FEB 2019
DRAWN: TPC
CHECKED: IMK



CoM Property ID: 109003

61-63 Stanley Street WEST MELBOURNE VIC 3003



LEGEND

 Parcel Boundary



Action Plan

EAO Recommendation

Apply EAO

EAO Comment

Site has been issued with a Statement of Environmental Audit with Conditions that require ongoing management for sensitive uses. (Carms No. 46022-1)

Site Use Summary

Current Land Use
Residential

Historic Land Use
Commercial

Key Information Supporting EAO Decision

Potentially contaminating land use/s identified on site as listed in the DSE General Practice Note (2005): Chemical Storage (Medium Potential)

Additional Considerations

Resources used to make decision



Resources used to make decision

Site inspection, Historical aerial photographs (1968/9 & 1987), EPA Audits (53X and 53V)

WEST MELBOURNE EAO - AMENDMENT C309 -
WEST MELBOURNE STRUCTURE PLAN:
PRELIMINARY LAND CONTAMINATION ASSESSMENT

CITY OF MELBOURNE

GIS ID: 7749

COPYRIGHT

Aerial Imagery copyright
City of Melbourne

0 5 10 20 30 40 50 metres

SCALE (at A4) (BUILDING MAP) 1:1,400
DATUM GDA 94, PROJECTION MGA Zone 55

PROJECT: 18113718
DATE: 27 FEB 2019
DRAWN: TPC
CHECKED: IMK



CoM Property ID: 109005

67-69 Stanley Street WEST MELBOURNE VIC 3003



LEGEND

 Parcel Boundary



Action Plan

EAO Recommendation

Apply EAO

EAO Comment

Site has been identified as being potentially contaminated in accordance with the Potentially Contaminated Land General Practice Note (DSE, 2005)

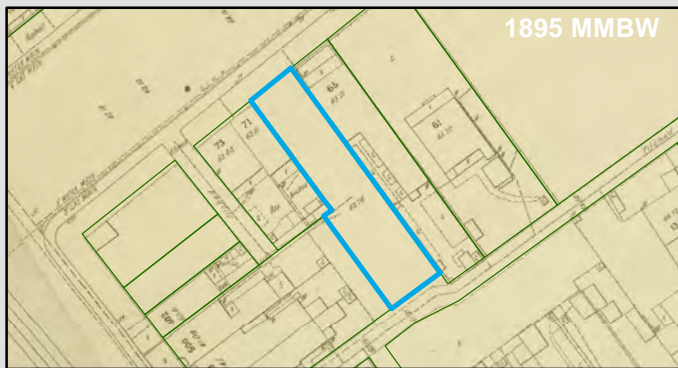
Resources used to make decision



Site Use Summary

Current Land Use
Commercial

Historic Land Use
Industrial



Key Information Supporting EAO Decision

Potentially contaminating land use/s identified on site as listed in the DSE General Practice Note (2005): Automotive repair/engine works

Additional Considerations

Industrial equipment supplier.

Resources used to make decision

Site inspection, Historical aerial photographs (1968/9 & 1987)

WEST MELBOURNE EAO - AMENDMENT C309 -
WEST MELBOURNE STRUCTURE PLAN:
PRELIMINARY LAND CONTAMINATION ASSESSMENT

CITY OF MELBOURNE

GIS ID: 7751

COPYRIGHT

Aerial Imagery copyright
City of Melbourne

0 5 10 20 30 40 50 metres

SCALE (at A4) (BUILDING MAP) 1:1,200
DATUM GDA 94, PROJECTION MGA Zone 55

PROJECT: 18113718
DATE: 27 FEB 2019
DRAWN: TPC
CHECKED: IMK

