



Global Research
Turning **Information** Into **Insight**

Moonee Ponds Creek Draft Strategic Opportunities Plan

ANALYSIS OF COMMUNITY ENGAGEMENT RESULTS

SUMMARY REPORT

14 June 2019

Prepared by Global Research Ltd

For



WE'RE PLANNING FOR THE FUTURE OF MOONEE PONDS CREEK

The Moonee Ponds Creek is an important north-south waterway in the City of Melbourne, that links several central city urban renewal precincts. The creek has been highly degraded by the impacts of industry and infrastructure over decades, and floods frequently impact the corridor.

The Draft Moonee Ponds Creek Strategic Opportunities Plan (MPC SOP) proposes a future vision for the creek corridor to increase the creek's ecological, recreational, cultural heritage and economic value.

This vision is underpinned by six thematic Goals; Water Management, Open Space, Biodiversity, Movement, History and Culture, and Collaborative Governance. Thirty-one Strategic Opportunities are presented to help realise these Goals.

This document presents a summary of the community engagement feedback received between 20 March and 28 April 2019, as part of the City of Melbourne's public consultation on the MPC SOP.

Both the Draft Moonee Ponds Creek Strategic Opportunities Plan and the full Analysis of Community Engagement Report can be accessed via <https://participate.melbourne.vic.gov.au/moonee-ponds-creek>.

"Moonee Ponds Creek will become a thriving corridor that supports the liveability and resilience of the city."



MOONEE PONDS CREEK FLOWS FOR **5KM**
THROUGH THE CITY OF MELBOURNE



AFTER **2025** URBAN DEVELOPMENT
WILL ACCELERATE



BY **2100** FLOODING RISKS
INCREASE SIGNIFICANTLY

How we engaged with community

Community and other stakeholder engagement on the draft MPC SOP involved both on-line and face-to-face engagement activities. The purpose of the engagement was threefold:

- > to raise awareness for Council's draft vision
- > to gather feedback on the key themes and the strategic opportunities presented – so as to refine the drafted list of ideas and establish if additional Opportunities should be added – and gauge whether any emerge as clear public priorities to advocate for
- > to mobilise community support for action along the corridor.

A range of methods were used to directly and indirectly engage the public, including; newspaper articles, social media posts and direct emails. Paid advertisements invited the broader community, and particularly residents in suburbs neighbouring the creek, to participate in one of five 'pop-up' engagement stations, or to complete a digital survey. Traditional Owner groups, and 'friends of' groups were invited to individual consultation sessions.

Consultation contributions:



FACE TO FACE
CONTRIBUTORS



ONLINE SURVEY
RESPONDENTS



EMAILED
SUBMISSIONS

Engagement reach:

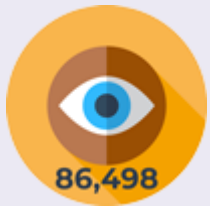


FACE-TO-FACE
CONTACTS

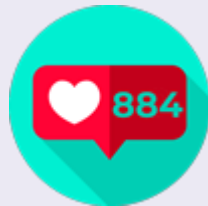


WEBSITE
VISITORS

Social media reach:



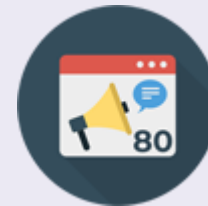
IMPRESSIONS



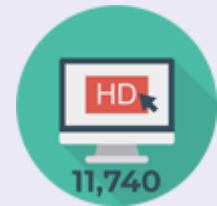
REACTIONS



LIKES



RETWEETS/SHARES



VIDEO VIEWS

WHAT YOU SAID ABOUT THE GOALS

Face-to-face participants were asked to mark their “top three” of the six Goals, using stickers on large format banners; they were also encouraged to share their views on the Opportunities via ‘post-it’ notes or through the online survey. Online survey respondents were required to choose their “top three” Goals and Opportunities, as well as explain why those ideas were important to them. An optional question gave space for people to suggest any additional Opportunities that we should consider.

Every response and comment recorded as part of the consultation activities has been read by analysts and synthesised within the findings.

Top Three Goals

When asked: *Which goals are most important to you?* – (Select your top three), participants selected their top three Goals from the list.

The bars on the right present the percentage and number of times each Goal was selected as one of the ‘top three’ by the 228 respondents.

Overall, Goals which relate to the natural environment rated higher than those which relate to human interpretation and management. **Biodiversity** ranked highest, selected by 73% or 166 participants, **Open Space** (68% or 154) and **Water Management** (64% or 146). **Movement** was within the top three for just over half of the participants (57% or 130). **History and Culture** (22% or 51) and **Collaborative Governance** (16% or 37) were the least commonly selected goals.



BIODIVERSITY

73% (166)



OPEN SPACES

68% (154)



WATER MANAGEMENT

64% (146)



MOVEMENT

57% (130)



HISTORY & CULTURE

22% (51)



COLLABORATIVE GOVERNANCE

16% (37)





Biodiversity

A healthy waterway and thriving ecosystem

You said:

“Reclaiming and providing habitat to ecology / flora and fauna which is quickly being lost in cities and opportunity to engage with nature”

We heard:

- > Restoring Moonee Ponds Creek to a natural state, developing healthy ecosystems and building habitats for flora and fauna are all important.
- > Biodiversity is also linked with public enjoyment. Natural spaces are limited in the urban setting and the creek provides an excellent opportunity for the public to come together, engage with and appreciate the natural wildlife the creek offers.
- > Litter and pollution negatively impact biodiversity in the creek. Rubbish, weeds, polluted water and contaminated soil are concerns.
- > Preserving nature and minimising species loss is a priority, with wildlife placed under increasing pressure from urban development and climate change.





Open Space

A diverse network of open spaces to support the growing needs of the city

You said:

“...Melbourne and its surrounds have become ugly with over-development and over-populated. We have lost our spaciousness and it is important to physical, mental and spiritual health to get it back.”

We heard:

- > Open space is highly supported for the recreational benefits it offers. Space is valued for activities such as jogging, dog walking, engaging with nature and generally enjoying the creek and surrounding environment.
- > Liveability and wellbeing are closely linked with open space – the creek provides an effective break from the highly developed city environment. Usable, natural and safe public spaces are necessary to bring people together and provide some relief from the urban setting.
- > The current condition of Moonee Ponds Creek is viewed unfavourably and is visually unappealing. Open space is an important component of improving the overall aesthetic of the area.





Water Management

A resilient creek adapted to current and future extreme weather events

You said:

“water quality management is important for maintaining biodiversity in the Moonee ponds creek and to reduce the impacts of flooding on surrounding infrastructure.”

We heard:

- > Effective water management influences the success of other Goals.
- > Flooding inhibits movement, disturbs open space use, threatens biodiversity, undermines the natural environment, damages surrounding infrastructure, and impacts open space usability.
- > Pollution, particularly rubbish in the creek is a problem. It degrades the natural environment and detracts from public enjoyment of the area.
- > Effective water management that considers climate change impacts, improves liveability, and ensures the creek isn't an arid environment.





Movement

A highly accessible and connected creek corridor

You said:

“...there is great potential for the Moonee Ponds Path to be a valuable cycling link but at the moment sections of it are genuinely dangerous, especially for beginner cyclists. It needs a lot of work.”

We heard:

- > Moonee Ponds Creek is a significant commuting corridor and improvements that promote safe and efficient pedestrian and cycle movement are welcomed.
- > Current cycling and pedestrian infrastructure are criticised, with many improvements suggested. Bike paths are uneven, poorly lit, overrun with weeds, subject to flooding and too narrow to accommodate current use levels.
- > Safety is a high priority for cyclists and pedestrians who want better maintained, well-lit trails. Cycle separation from pedestrians is necessary to support safe and efficient movement through the corridor.





History & Culture

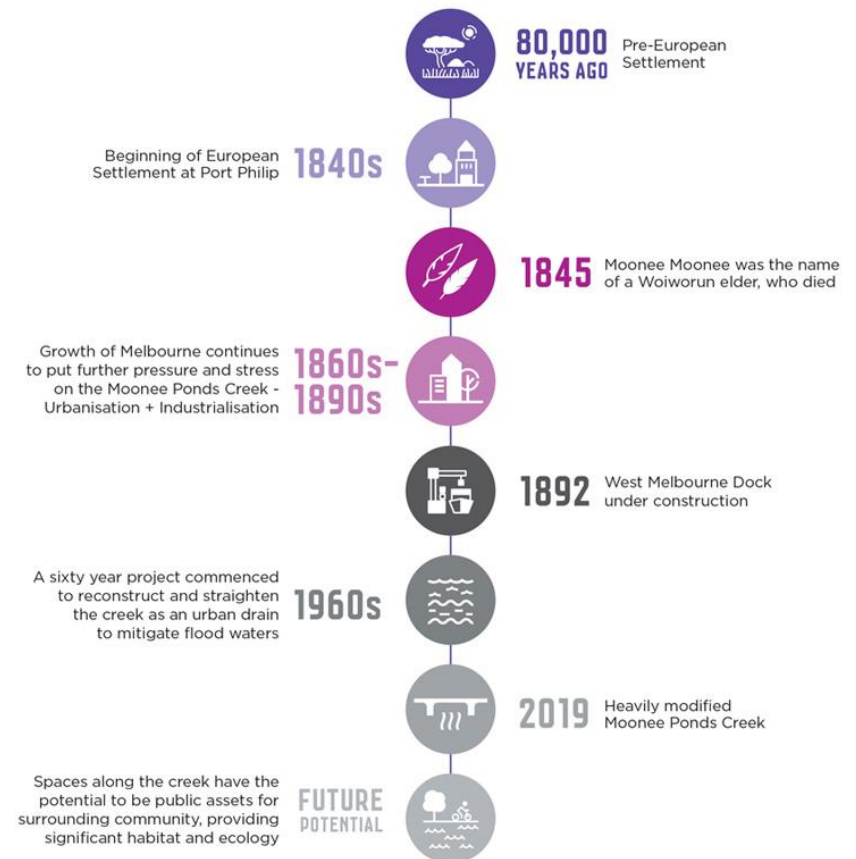
A celebrated past and shared vision for the future

You said:

“We need to be recognising and prioritising the history of this land and the Indigenous people who's land it still is. This can help forge an understanding and appreciation of Indigenous people and history.”

We heard:

- > Recognition of Aboriginal peoples and their culture is valued highly.
- > Acknowledgement of the Aboriginal connection to Moonee Ponds Creek is a step towards righting past wrongs and respecting the importance of the area for Aboriginal peoples.
- > Educational interpretation strategies that increase public appreciation and understanding of Aboriginal peoples, knowledge and history are supported.
- > Breaking down cultural barriers and enhancing Melbourne's identity is linked to this Goal.





Collaborative Governance

Advocate for transformational change

You said:

“The city of Melbourne won't be able to do these works on their own and collaborative work is crucial for the success of any public spaces at present. Locals need to have a say in their priorities so that they help conserve projects and enforce them.”

We heard:

- > Collaborative governance is deemed necessary to progress the development of Moonee Ponds Creek.
- > A variety of groups have linked interests, roles and responsibilities in the creek's management.
- > Groups must work together to achieve productive and positive results.



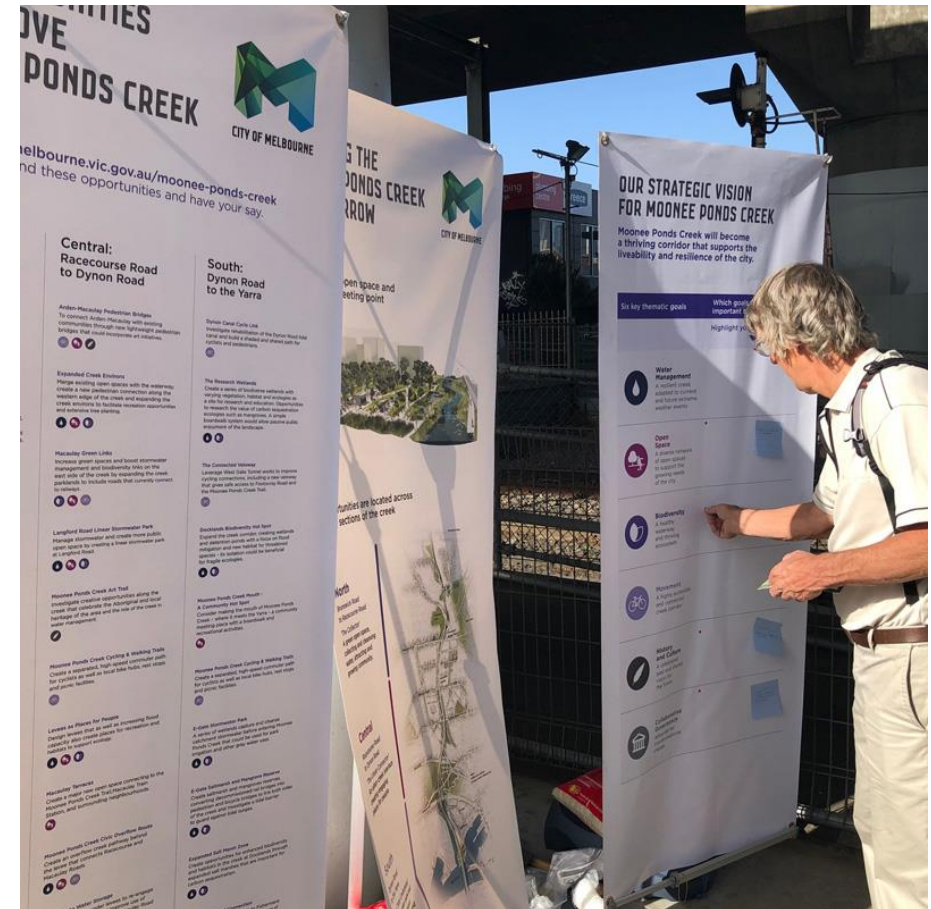
Inter-Connected Goals

You said:

“Biodiversity along with water management must be integrated to optimally provide multiple benefits, for both environmental conservation and human recreation.”

We heard:

- > The success of individual Goals is dependent on and influenced by the success of others.
- > **Water management** is important to manage flooding, which is inhibiting movement, damaging **biodiversity** and impacting the usability of **open space**.
- > **Open space** contributes to enjoyment of **movement** through Moonee Ponds Creek and offers opportunities for **water management**.
- > **Biodiversity** enhances water management and can protect and enhance open space.
- > **Movement** is more enjoyable when Moonee Ponds Creek's **biodiversity** and **open space** are enhanced.



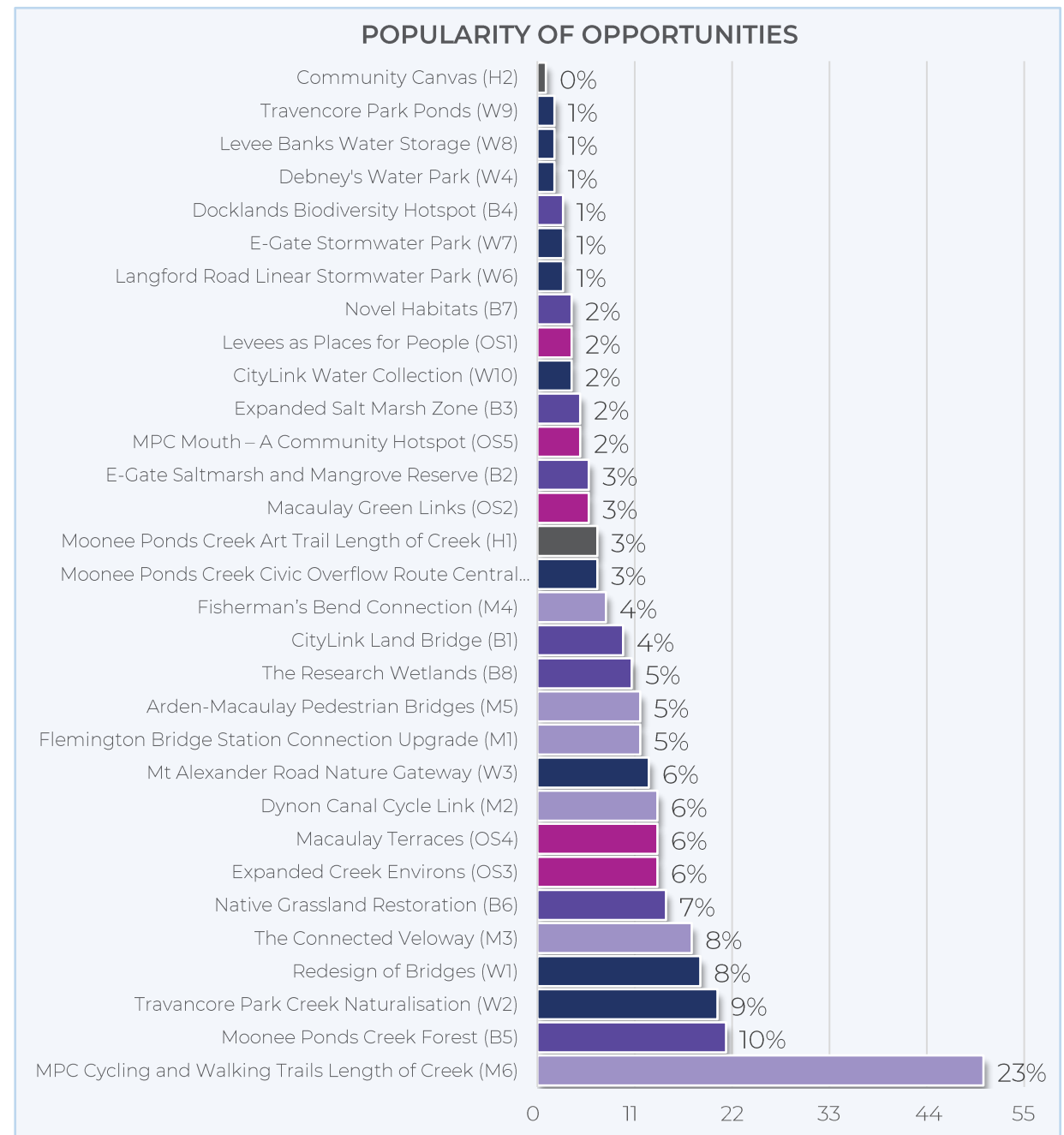
WHAT YOU SAID ABOUT THE OPPORTUNITIES

When asked: *Which opportunities would you most like to see created for Moonee Ponds Creek?* – (Select your top three), participants selected three out of the 31 options. They went on to explain why.

The chart on the right presents the number and percentage of times that each of the 105 respondents selected an Opportunity as one of their 'top three'.

Results

Selected by 23% or 52 times, **Moonee Ponds Creek Cycling and Walking Trails Length of Creek (M6)** was by far the most important Opportunity for participants. Other Opportunities that were selected as important by more than 15 participants were: **Moonee Ponds Creek Forest (B5)** (10% or 22); **Travancore Park Creek Naturalisation (W2)** (9% or 21); **Redesign of Bridges (W1)** (8% or 19); and, **The Connected Veloway (M3)** (8% or 18).



Number (horizontal axis) and percentage of times each opportunity was selected

Your top three Opportunities

Moonee Ponds Creek Cycling and Walking Trails Length Of Creek (M6)



PRIORITISED BY:

23% (52)



You said:

“The need for improved cycling and active transport infrastructure is critical, particularly with regard to reducing greenhouse gas emissions. The existing ad-hoc bike paths need to be taken seriously as important transport corridors”

We heard:

- > **Separated, adequately maintained**, well-lit and reliable cycling and walking infrastructure is needed to overcome the current **poor state** of the track and low perceptions of safety.
- > Walking and cycling **network improvements** will have flow on benefits, that may entice thousands of users. There is potential to create a trail which is: a non-stop trip, the fastest possible route, cheaper than roads and **pays for itself** with health benefits.
- > **Connected**, active transport reduces congestion and environment damaging emissions.
- > **Community cohesion** and well-being can be enhanced through improved liveability, connections to nature and shared experiences.



Moonee Ponds Creek Forest (B5)



You said:

“... Not only good for the environment to encourage Australian flora and fauna, but good for the community to come together, appreciate the parklands and benefit the economic status of the community.”

We heard:

- > The creek is in **urgent need** of vegetation and a forest is an excellent way to **restore biodiversity**.
- > Benefits for wildlife from **improved habitat**, biodiversity and encouraging a green corridor, will enhance indigenous species relationships and improve the water quality of the **creek system**.
- > A forest will improve the **natural experience** of the area and create open green spaces to attract visitors and be widely **enjoyed** by the community.
- > Will provide **relief** from the negative impacts of the urban environment, breaking the “sea of concrete” with enjoyable **green spaces**.

PRIORITISED BY:

10% (22)



Travancore Park Creek Naturalisation (W2)



You said:

“Moonee Ponds Creek between Brunswick Rd & Racecourse Rd is a drain and is a crime against nature. Restoring the section of the creek to its pre-colonisation condition (or as close as is reasonably practicable at the moment) is a high priority.”

We heard:

- > Will bring the creek back to a more **natural state**. The creek's concrete lining is an “eyesore” and a “crime against nature” and natural environment **restoration is necessary** for human enjoyment, habitat and biodiversity.
- > The area **regularly floods** and that naturalisation will help slow water, increase recharge and **improve water** quality.
- > Will acknowledge a **catchment-based** approach to resolving flooding and illustrate a **collaborative approach** between bordering councils; Melbourne Water, CityLink and the local community.

PRIORITISED BY:

9% (21)



Your views and suggestions for each opportunity

31 OPPORTUNITIES WERE PRESENTED	WE HEARD	NUMBER OF COMMENTS
Moonee Ponds Creek Cycling and Walking Trails Length of Creek (M6)	<ul style="list-style-type: none"> > Cycling safety and condition improvements > Walking and cycling network improvements > Improve Melbourne connectivity > Benefits of prioritising active transport > Community use, wellbeing and cohesion > A variety of positive and negative cycle path comments 	60
Moonee Ponds Creek Forest (B5)	<ul style="list-style-type: none"> > Increased biodiversity, wildlife habitat and water quality improvements > A variety of comments discussing urban forest benefits 	21
Travancore Park Creek Naturalisation (W2)	<ul style="list-style-type: none"> > Returning the Creek to its natural state > A variety of environment improvement topics 	19
The Connected Veloway (M3)	<ul style="list-style-type: none"> > Walking and cycling improvements > Improved safety from improved cycle infrastructure > Cycle connectivity for commuting > Vehicle reduction and general support 	19
Redesign of Bridges (W1)	<ul style="list-style-type: none"> > Redesign bridges for safety > Better connections from redesigned bridges > Other topics, including heritage, flooding and human interaction 	18
Macaulay Terraces (OS4)	<ul style="list-style-type: none"> > Open space public land for recreation use > A variety of environmental and community benefits to be delivered 	16
Native Grassland Restoration (B6)	<ul style="list-style-type: none"> > Improved amenity and public enjoyment > Improved natural environment, reduced emissions and general support 	14
Expanded Creek Environs (OS3)	<ul style="list-style-type: none"> > Improved natural amenity > Improved open space, increasingly important as population grows > Water management particularly with regard to flooding 	14
Dynon Canal Cycle Link (M2)	<ul style="list-style-type: none"> > Enhanced active transport experience through improved cycling and walking > Cycle safety improvements > Improved connectivity, encouragement of cycling and reduced emissions 	13
Flemington Bridge Station Connection Upgrade (M1)	<ul style="list-style-type: none"> > Improved cycle commuting, connectivity and safety > Reduced cycle congestion and better train access 	13
Arden-Macaulay Pedestrian Bridges (M5)	<ul style="list-style-type: none"> > Improved connectivity between Melbourne suburbs > Improvements to cycling infrastructure and safety > Improved accessible space and general amenity 	12

31 OPPORTUNITIES WERE PRESENTED	WE HEARD	NUMBER OF COMMENTS
The Research Wetlands (B8)	> Restoration of biodiversity and the creeks natural state	10
Mt Alexander Road Nature Gateway (W3)	> Improved amenity and engagement with nature	9
CityLink Land Bridge (B1)	> Support for connectivity, some improvement suggestions proposed	9
Fisherman's Bend Connection (M4)	> Improved connections and safety > Pedestrians and cycling conditions supported	7
Moonee Ponds Creek Civic Overflow Route Central (W5)	> Improvements to access and space provision, flood management, good management needed	7
Moonee Ponds Creek Art Trail Length of Creek (H1)	> A colourful space, telling traditional stories and benefiting the whole community	7
Macaulay Green Links (OS2)	> Open space and biodiversity improvements	7
Levees as Places for People (OS1)	> An enhanced space to improve recreation use and community respect	7
Expanded Salt Marsh Zone (B3)	> Support for regeneration of native aquatic plants, integration with other Opportunities	6
CityLink Water Collection (W10)	> Improved water management, water quality and improvement to surrounding areas	6
Novel Habitats (B7)	> Habitat and biodiversity restoration supported	5
Docklands Biodiversity Hotspot (B4)	> A variety of ideas including increased biodiversity, boating, native vegetation restoration	5
Travancore Park Ponds (W9)	> Benefits to water management, biodiversity and water open space supported, alternative underground storage suggested	5
E-Gate Saltmarsh and Mangrove Reserve (B2)	> Biodiversity benefits, particularly for tidal marine life	4
Langford Road Linear Stormwater Park (W6)	> Increased recreation space and biodiversity enhancement for the growing population	4
E-Gate Stormwater Park (W7)	> Working with nature to improve wetlands and accommodate flooding	4
Debney's Water Park (W4)	> General comments, one supporting Moonee Valley Council design	2
Levee Banks Water Storage (W8)	> Environmental sensitivity needed in delivering this Opportunity	2
Moonee Ponds Creek Mouth – A Community Hotspot (OS5)	> Natural environment improvements	1
Community Canvas (H2)	> One comment opposed to wasted energy and light pollution	1

HOW YOUR FEEDBACK WILL BE USED

We've received overwhelming community and stakeholder support for this vision.

Your feedback is helping us revise our Moonee Ponds Creek Strategic Opportunities Plan. Specific suggestions to refine concepts and new opportunity ideas put forward are now being investigated for possible inclusion in the final Strategic Opportunities Plan document. This Plan will then be recommended for endorsement by the Future Melbourne Committee later this year. The vision and priorities articulated in the Plan will provide Council with a formal position from which to advocate to the State government, and to better facilitate collaboration across the full length of the creek corridor.

Your feedback is also being shared with and considered by the Victorian Planning Authority (VPA), who is tasked with undertaking further in-depth technical and feasibility studies to understand cost and implementation issues. The insights gained through our consultation activities will provide them with an understanding of which thematic Goals are most important to the realisation of our vision and why, as well as the range of Opportunities for creek improvement that have the greatest community support. The VPA will formulate advice to the Victorian Government later this year, about how to move forward with the creek's revitalisation, including any possible short-term project opportunities.

Thank you to everyone who's shown interest in this Plan and contributed to our consultation process. Your positivity and constructive ideas are helping Melbourne make the most of the incredible natural asset that is Moonee Ponds Creek.

This report has been prepared by:

Global Research
150 Office Rd
Merivale
Christchurch 8014
New Zealand
+64 3 355 4562
www.globalresearch.nz



Global Research
Turning **Information** Into **Insight**