

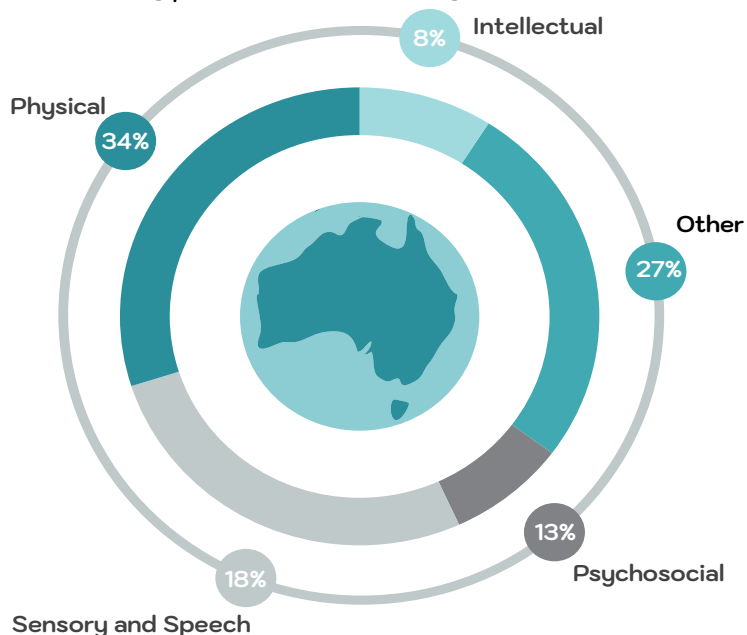
CITY OF MELBOURNE

Disabilities are DIVERSE.

They may come and go and many are invisible.

Accessibility is about ensuring everyone can participate and contribute.

Types of disability in COM



1 in 3 People with a disability have a profound core activity limitation



1 in 3 People with a disability report their consumer needs are not met



4 in 5 People with a physical disability as their main disability



Only 4% of Australians with a disability use a wheelchair

18%

of Australians live with a disability

25%

of Australians live with a mental illness

96%

of disabilities are invisible

57%

of people over the age of 85 require personal assistance

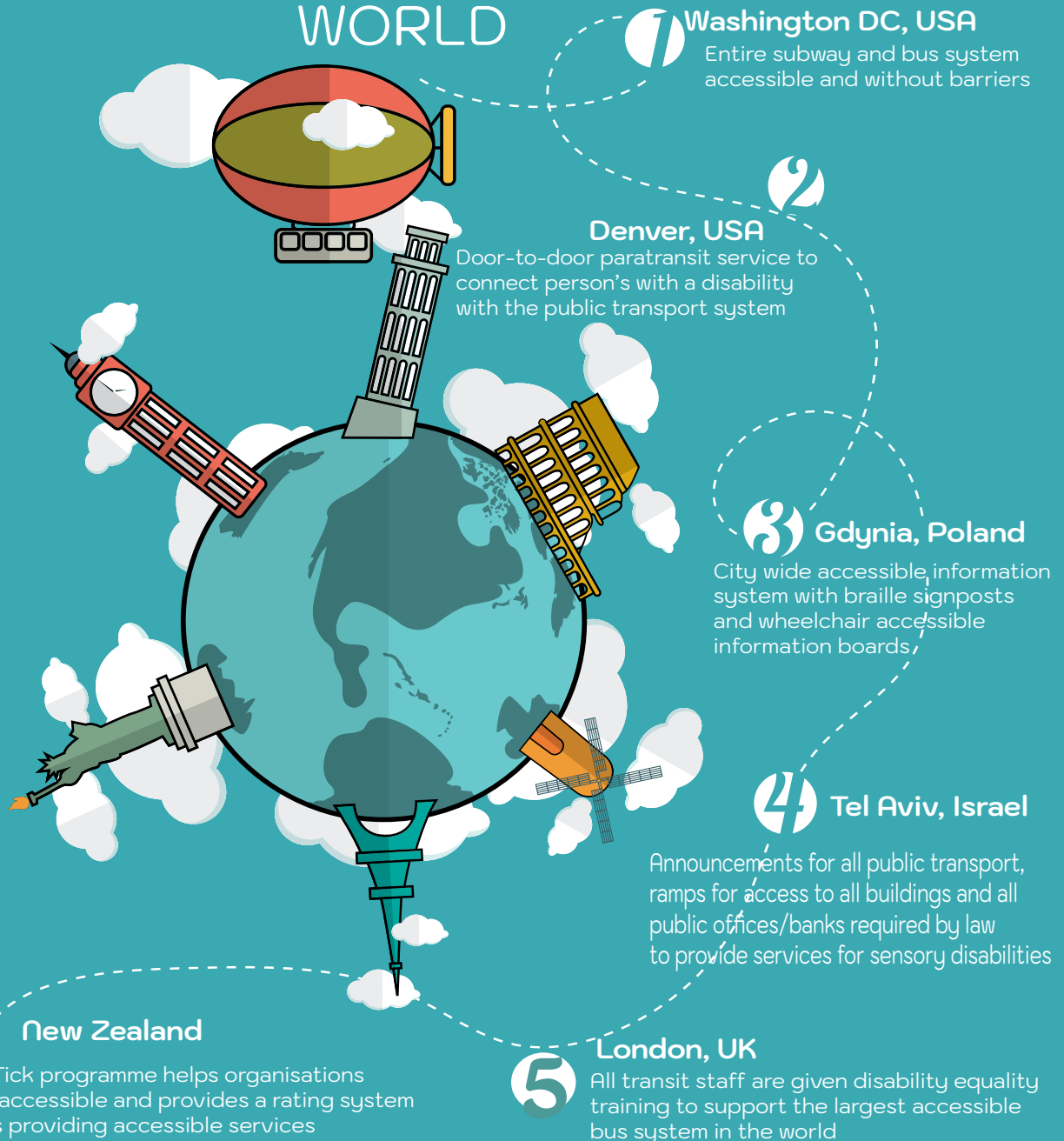
35%

of people with a disability have avoided situations because of their disability

95%

of people with disabilities live at home or in the community

Examples to follow around the WORLD



\$10.8 Billion = The Inbound Accessible Tourism Market for Australia

Out of 27 OECD countries surveyed, Australia has the **LOWEST** relative income for people with disabilities.

\$50 BILLION

The estimated increase in the Australian gdp if Australia was in the top 8 OECD countries for relative income for people with disabilities.

36% of people with disabilities are often treated less favourably than customers without disability

28% of people with disabilities have experienced discrimination by one or more of the organisations they've recently interacted with

62% of SME's have not done anything in the past 12 months to make it easier for customers with disabilities

50% of the above businesses felt that they needed to be asked to provide services for disabilities

10% The unemployment rate for people with a disability is almost double the general population

60%

of people with a disability need assistance with at least one activity in daily life



ASSISTING PERSONS WITH DISABILITIES



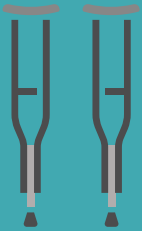
460,000

The number of Australians supported by the National Disability Insurance Scheme



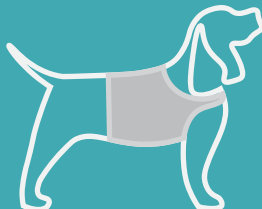
280,000

people under the age of 65 who receive services under the National Disability Agreement



5,040

number of carers in COM providing unpaid assistance to a person with a disability in 2011



There is no registration for Assistance Dogs in Victoria.
As user numbers increase, registration is necessary to ensure
standards of training are set and enforced.

Sources:

<https://www.theguardian.com/cities/2018/feb/14/what-disability-accessible-city-look-like>
<https://www.goodnet.org/articles/6-most-disabilityfriendly-travel-destinations>
<https://www.uksmobility.co.uk/blog/2018/01/disability-travel-accessibility/>
<https://providers.dhhs.vic.gov.au/people-disability-victoria>
<https://www.humanrights.gov.au/sites/default/files/FTFDisability-large.jpg>
<https://www.and.org.au/pages/disability-statistics.html>
<http://www.travability.travel/blog-node/understanding-opportunity-australia-accessible-tourism/>
<https://www.abs.gov.au/>