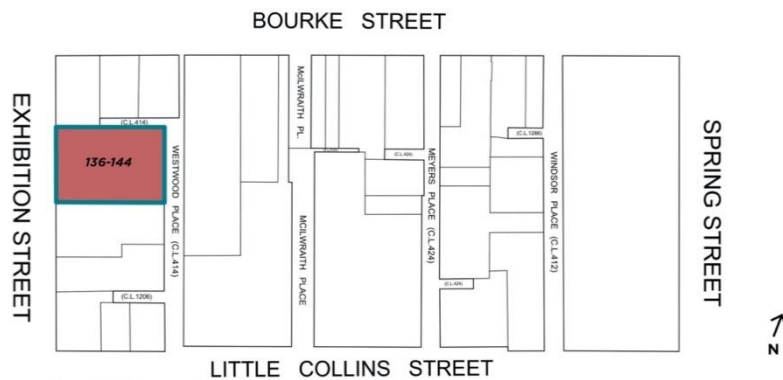


SITE NAME	Former Australia Pacific House [also known as CAGA Building]
STREET ADDRESS	136-144 Exhibition Street, Melbourne
PROPERTY ID	103623



SURVEY DATE: October 2019

SURVEY BY: GJM Heritage

HERITAGE INVENTORY	No	EXISTING HERITAGE OVERLAY	No
PLACE TYPE	Individual Heritage Place	PROPOSED CATEGORY	Significant
		FORMER GRADE	Ungraded
DESIGNER / ARCHITECT / ARTIST:	McIntyre McIntyre & Partners	BUILDER:	Sapris Constructions Pty Ltd
DEVELOPMENT PERIOD:	Postwar Period (1945-1975)	DATE OF CREATION / MAJOR CONSTRUCTION:	1975-1978

THEMES

ABORIGINAL THEMES	SUB-THEMES
Research undertaken in preparing this citation focused on the postwar history of the site and did not address associations with Aboriginal people or organisations	Aboriginal Themes (Hoddle Grid Heritage Review, Stage 2 Volume 3 Aboriginal Heritage, March 2019) have therefore not been identified here
POSTWAR THEMES	DOMINANT SUB-THEMES
1 Shaping the urban landscape	1.8 Expressing an architectural style 1.9 Beyond the curtain wall
3 Building a commercial city	3.2 Buiness and finance

LAND USE

THEMATIC MAPPING AND LAND USE	
1890s	Merchant, Trade, Retail
1920s	Merchant, Retail
1960s	Merchant, Retail

RECOMMENDATIONS

Recommended for inclusion in the Schedule to the Heritage Overlay of the Melbourne Planning Scheme as an individual heritage place.

Extent of overlay: To extent of property boundary

SUMMARY

Australia Pacific House is a 13 storey reinforced concrete building designed by architects McIntyre McIntyre & Partners for owners Australia Pacific Investment Corporation Pty Ltd. Construction of the building was undertaken from 1975-1978.

CONTEXTUAL HISTORY

The period from 1945 to 1975 was one of radical transformation for Melbourne; from the low-rise city that still reflected its colonial origins to a bustling international centre of commerce and culture. The surviving buildings from this period are evidence of the evolving economic and social conditions in Melbourne at the time and demonstrate the city's transition from its nineteenth century manufacturing origins to its current banking, office and service industry focus. These buildings reflect the increasing commercial and cultural role of Melbourne in the international context of globalisation and postwar optimism as well as a radically altered economic environment which saw an influx of foreign capital and ideas. Collectively, these buildings represent a transformative period in the life of the city; a period that is categorised by significant change, growth and evolution across all aspects of life – social, political, economic and cultural.

Expressing an architectural style in the postwar period

Multi-storey commercial buildings made a significant contribution to postwar Melbourne, particularly from the late 1950s to the mid-1970s. With the resumption of building construction in the 1950s after the hiatus of World War II, the advent of curtain wall construction – enabling the application of a non-load bearing skin to the face of a building – radically altered the appearance of the modern city commercial building.

Constructed predominantly for the financial and business sectors, there was an eagerness amongst clients to establish a dominant city presence and to project a modern, progressive and prestigious approach to commercial building design. The resulting Post-War Modernist style of multi-storey buildings, influenced particularly by steel and glass office tower design in the United States, were in stark contrast to the pre-war city buildings in central Melbourne and presented architects of the day with a completely new design challenge.

Thirty major city buildings were completed in Melbourne in four years alone from 1955 to 1958 and 22 were office buildings within, or on the fringes of, the CBD (Saunders 1959:91). Largely influenced by the American skyscraper, the earliest office buildings of the 1950s utilised innovative curtain walling, formed from continuous metal-framing filled principally with glass. The curtain wall is described by Miles Lewis as 'essentially a continuous, non-bearing skin on the face of a building' and is one of the 'leitmotifs of modernism, both in Australia and overseas' (Lewis 2012:185). The curtain walled 'glass box' aesthetic was embraced by the local architects, and many buildings followed to the extent that high-rise office buildings with curtain walling became a defining characteristic of the new buildings in the latter half of the 1950s (NTAV 2014:5-6).

Amongst the first curtain walled buildings to be constructed in Melbourne was the 13-storey glass-fronted Gilbert Court at 100 Collins Street (J A La Gerche 1954-56), which was built to the height limit of 132 feet (40m), and – perhaps the most influential – the free-standing ICI House, 1 Nicholson Street (Bates Smart & McCutcheon 1955-58). Located on the outskirts of the Hoddle Grid, ICI House was clad on all four facades with glass curtain walling and exceeded the well-established maximum building height within the Hoddle Grid. Large numbers of similarly designed city commercial buildings followed, often displaying bold horizontal contrast between alternating rows of glazing and coloured spandrels.

Beyond the curtain wall

The dominant glass box design of the late 1950s was challenged in the 1960s as the shortcomings of the fully glazed curtain wall became apparent – in particular its poor thermal performance – and new technologies became available. Advances in concrete technology, including the development of precast concrete, impacted greatly on both the appearance and structure of the commercial tower form from the 1960s onwards.

By the mid-1960s, architects were experimenting with a range of solid cladding materials for tower buildings including precast concrete, stone, reconstituted stone, tile and brick, as well as various metals for cladding, screening and detailing. A number of buildings continued to adopt true curtain wall construction; however, a different aesthetic was created by the use of solid external cladding in place of the typically glazed spandrels of the 1950s. This aesthetic is evident in a number of existing buildings in the city centre including the Guardian Building at 454-456 Collins Street (1960-61), with its stone-faced precast concrete panelled facades.

Concrete advances saw an increase in the use of reinforced column and slab construction in 1960s multi-storey building design, however concrete-encased steelwork also continued to be used. Some buildings incorporated structural elements in their main facades (for example load-bearing precast concrete panels or structural mullions) so were therefore not of true curtain wall construction. The structural nature of these facades was not necessarily apparent to the observer and the buildings continued to display the well-established repetitive characteristics of the true curtain wall façade, such as at Australia-Netherlands House, 468-478 Collins Street, designed by Peddle Thorp & Walker in association with Meldrum & Partners (c1968-70).

A broad range of design approaches became apparent in multi-storey commercial buildings of the 1960s and early 1970s. The horizontality of curtain walling was often balanced by the addition of vertical elements such as façade columns, strips or fins, which introduced textural patterns and visual strength to the facades of a number of buildings. Other multi-storey towers clearly expressed their structure externally with grid-like facades which clearly reflected the internal trabeated structural system. Sun screening provided additional patterning to facades, either as a repetitive decorative motif across the façade, as an expression of the window frames (such as at Royal Mail House, 253-267 Bourke Street designed by D Graeme Lumsden, 1961-63), in the form of balconies (as at the Melbourne Office of the Commercial Banking Company of Sydney building, 251-257 Collins Street, 1971-73), or occasionally as an entire screen attached to the exterior face of the building.

Buildings also varied with towers set within plazas or on dominant podiums. The State Savings Bank of Victoria at 45-63 Swanston Street, designed by Buchan Laird & Buchan (c1974), is one example of a building constructed with a dominant podium. Buildings were sometimes set back from the street line behind public plazas – a strategy adopted to gain council approval for additional building height and evident in the Bates Smart McCutcheon designed Commonwealth Banking Corporation Building at 359-373 Collins Street (c1972-1975) – while others were built within larger plaza spaces, such as the AMP Tower & St James Building Complex (1965-69), designed by US-based firm Skidmore Owings & Merrill (SOM).

Business and finance in the postwar period

The postwar period was one of fluctuating fortunes in the business and finance sectors. In the main however, economic confidence and financial deregulation came together to create a period of growth that would radically change the appearance of central Melbourne.

Speculative investment in Melbourne increased after the Commonwealth government lifted restrictions on share dealings in 1947, which resulted in a dramatic increase in new company registrations (Marsden 2000:44-45). Subsequently, during the 1950s, a number of national and international companies sought to assert a physical presence in the country, constructing corporate buildings in the city centre. In Melbourne, up to the mid-1960s, investment was predominantly driven by British and American companies, government bodies, large Australian corporations such as AMP and BHP, and property developers, including Lend Lease (formerly Civil and Civic) and L J Hooker Ltd. Later in the 1960s, it was also driven by private developers such as Grollo and Lustig & Moar (Marsden 2000:46-47).

The construction of large bank buildings was also prolific during the postwar period with the passing of the Banking Act 1947, which led to an increase in the number of bank branches established in Victoria. One of the most significant changes in banking in Australia at this time was the creation of the new Reserve Bank of Australia in 1959, which replaced the central bank known as the Commonwealth Bank of Australia (Heritage Alliance 2008:17). Bank buildings constructed in the central city during this period included the State Savings Bank of Victoria at 233-243 Queen Street (1967-68), the Bank of Adelaide Building at 265-269 Collins Street (1959-60) and the Commercial Banking Company of Sydney Building at 251-257 Collins Street (1971-73).

The period between 1961 and 1963 was one of business recession, while the years between 1967 and 1969 was a time of growth due to two mineral booms. From 1967 to 1971 the construction of new office space in the city centre more than doubled that of the previous five years (City of Melbourne Strategy Plan 1974 in Clinch 2012:66-67). The property boom ended during the economic crash of the early 1970s and the 1974 oil crisis when many British institutions that had founded the commercial property industry left Australia. Government bodies and banks subsequently took over much of the building construction in the city centre (Marsden 2000:48).

SITE HISTORY

Australia Pacific House was designed by architects McIntyre McIntyre & Partners for owners Australia Pacific Investment Corporation Pty Ltd (also known as Aust-Pacific Investment Corporation Pty Ltd), with construction from 1975-1978. The City of Melbourne received a building permit application for construction of a 13 storey reinforced concrete office building at 136-144 Exhibition Street in August 1974 (with an estimated cost of \$3,132,000) (BAI; BAF; McIntyre). The building was designed for owners Australia Pacific Investment Corporation Pty Ltd, to serve as Australia Pacific House. In 1975, the beneficial owners Commercial & General Acceptance Ltd (CAGA) appointed Sapis Constructions Pty Ltd as the builders (Aust-Pacific Investment Corp still held the property in trust) (BAF). The structural consultants were Parkhill and Freeman (BAP).

Commercial & General Acceptance Ltd (CAGA) was a national finance company established in the 1950s, sponsored by the CBC Bank Group (Commercial Banking Company of Sydney Limited). Associated companies included Commercial & General Insurance Ltd, CAGA Personal Credit Pty Ltd, and CAGA Acceptance Pty Ltd, amongst others (*Sydney Morning Herald*, 15 Nov 1960:31; CBC Officers Club). Contemporary newspapers addressed Commercial & General Acceptance Ltd to 136 Exhibition Street from 1979 to 1981 (may extend beyond 1981; not confirmed) (*Age*, 24 Feb 1979:83; 21 Feb 1979:49).

Specifications dating to 1974 described the 'eleven storey office building', to be constructed of reinforced concrete, an indoor restaurant and outdoor garden court at basement level, a foyer and rentable space at ground level, rentable office spaces on the 1st to 10th floors and a plant room and roof area on the 11th floor (BAF). Architectural drawings dated 1974 and 1975 show the elevations and proposed basement and ground floor plans, with an east and west plaza at ground level and basement level garden court and restaurant (Figure 1 - Figure 6). Two photos show the building in 1984 (Figure 8 & Figure 9).

McIntyre McIntyre & Partners, architects

McIntyre McIntyre & Partners was established in 1962 as McIntyre, McIntyre & Associates following the merger of Peter and Dione McIntyre's architectural practice with that of Peter's father, Robert A McIntyre. From 1967 to 1972, the firm practiced as McIntyre, McIntyre & Partners, before changing to its current iteration, McIntyre Partnership. The amalgamation was a commercial move to gain larger commissions.

Prior to this, Peter and Dione's work involved small-scale domestic projects. Peter's work in particular focused on the interplay of function and structure, where he experimented with cantilevered and tensile structures, and the Ctesiphon arch. He gained public recognition with the commission for the Melbourne Olympic Swimming Stadium (1952-6) in collaboration with architects, Kevin Borland and John & Phyllis Murphy, and engineer Bill Irwin.

Following the McIntyre merger, the new firm designed a significant number of hotels and hospitality ventures (inherited from McIntyre Snr's practice), as well as skiing and alpine architecture. In central Melbourne, the firm completed the innovative Kings Parkade car park in Little Collins Street (1966), and commercial office buildings including 170 William Street (1968), 150 Lonsdale Street (1969), 178-188 William Street (1972-73) and Australia Pacific House at 136-144 Exhibition Street (1975-78).

Other notable work included the adaptive reuse and conversion of the early twentieth century Henry Jones Jam Factory in Prahran into an up-market shopping centre (1974) and the design for Melbourne's Parliament Station (1973-82).

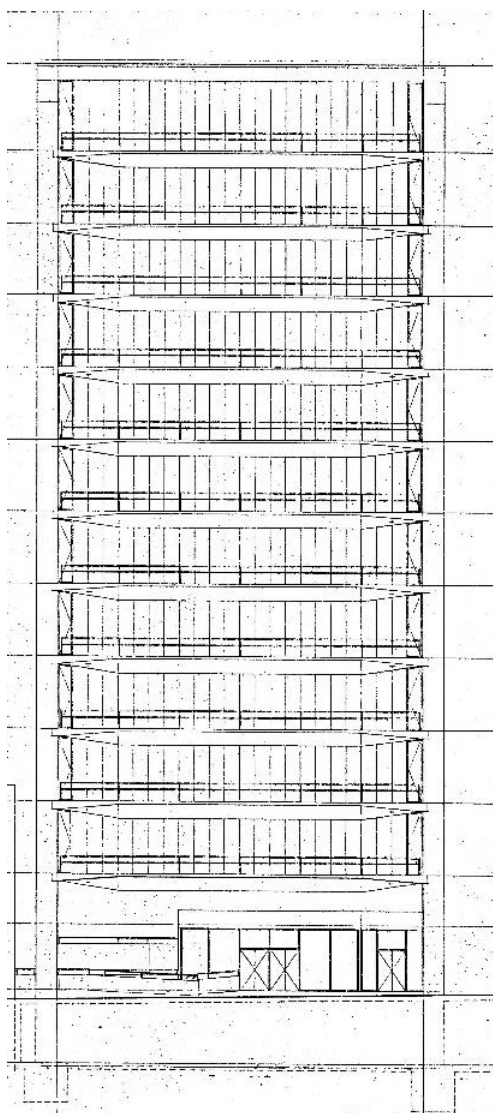


Figure 1. Architectural drawing of the west elevation (fronting Exhibition Street), dated 1965 (BAP).

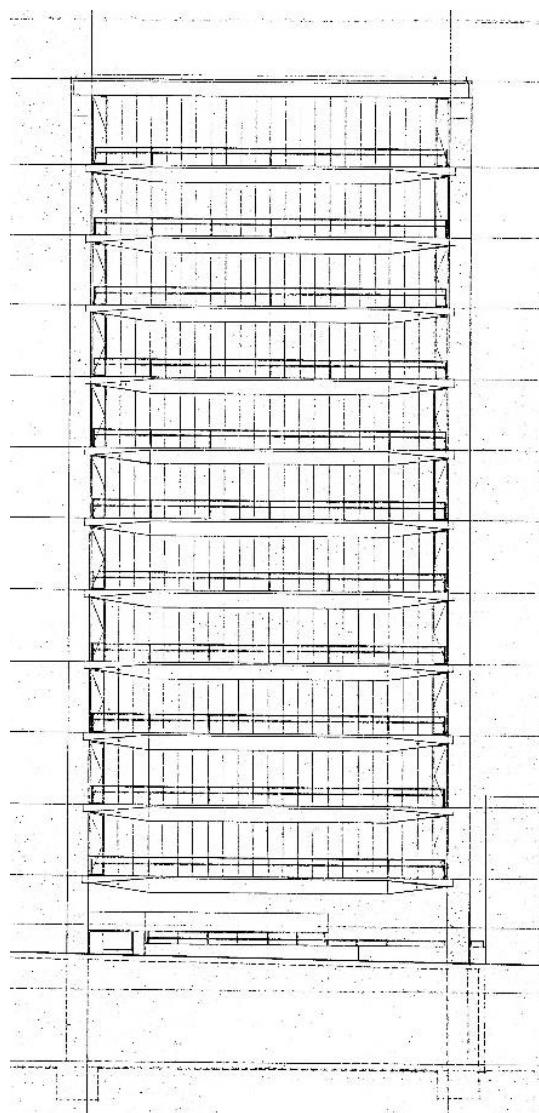


Figure 2. East (rear) elevation, dated 1975 (BAP).

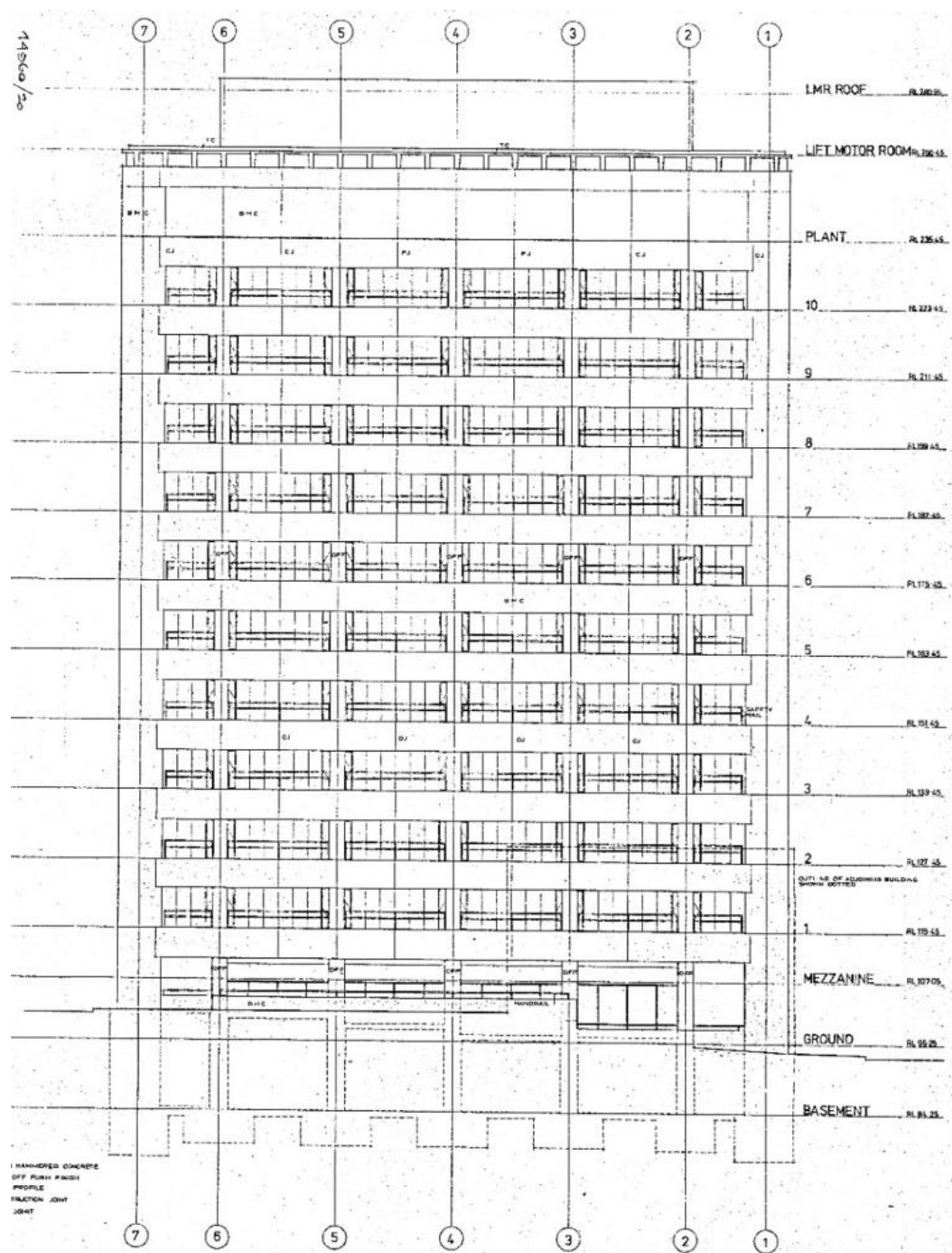


Figure 3. Architectural drawing of the north elevation, dated 1975 (BAP).

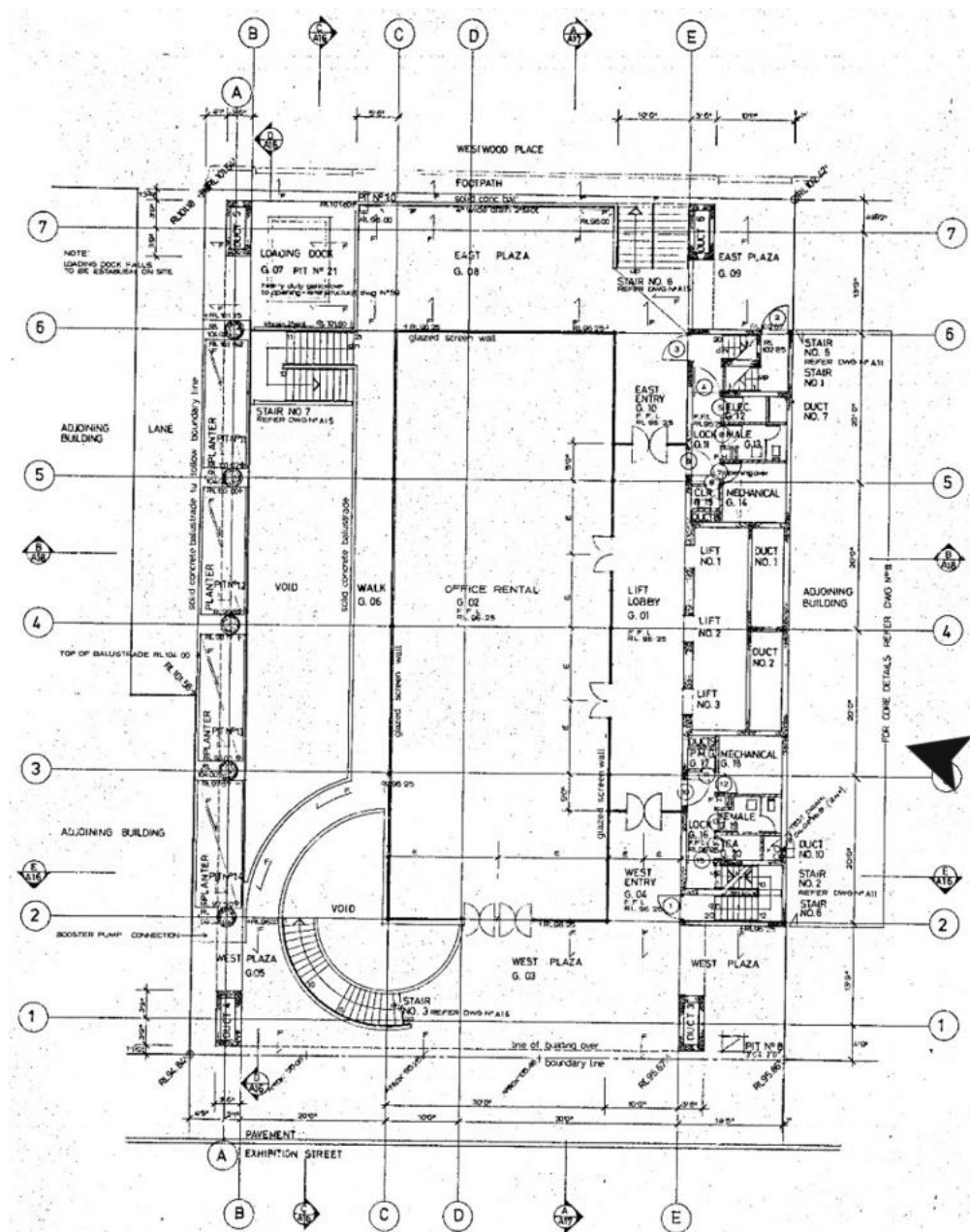


Figure 4. Detailed ground floor plan, dated 1975 (BAP).

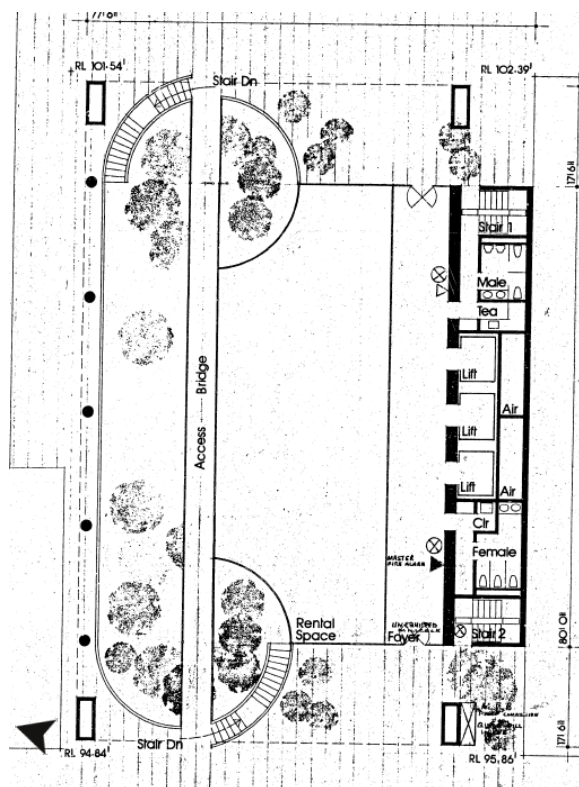


Figure 5. Ground floor plan, stamp dated 1974 (BAP).

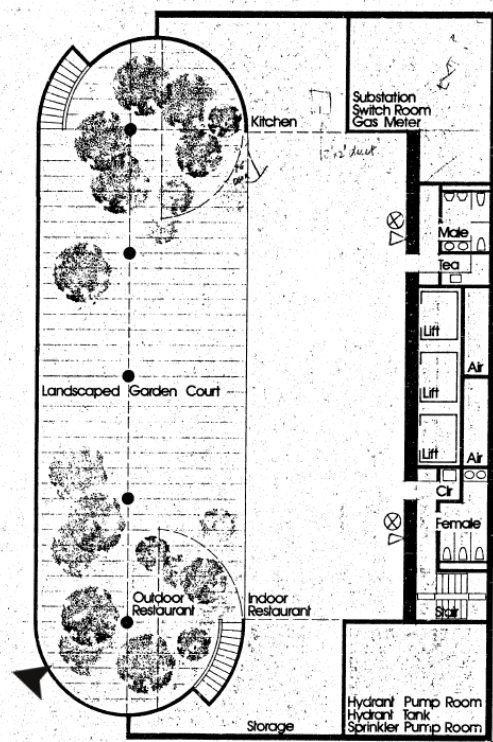


Figure 6 Basement floor plan, stamp dated 1974 (BAP).

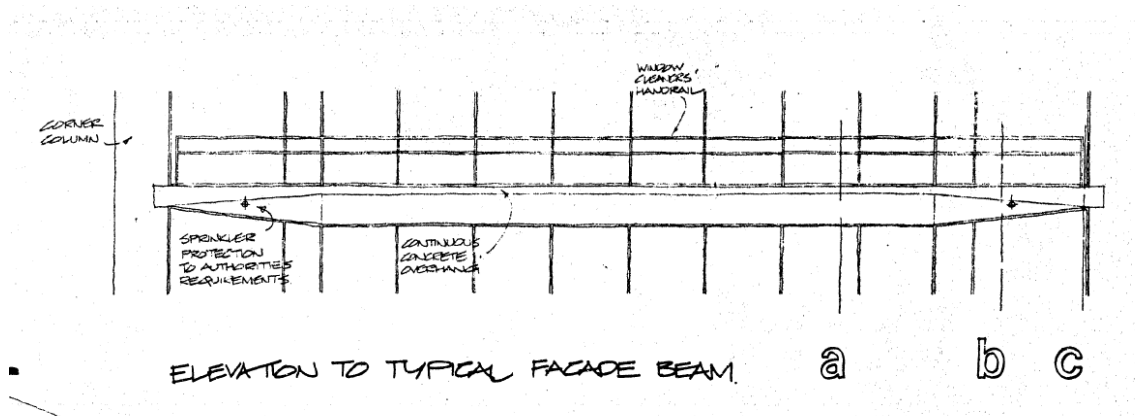


Figure 7. Detail drawing of a façade beam (BAP).



Figure 8. The building in 1984 (City of Melbourne Libraries online Heritage Collection, Reference no. Butler13724).



Figure 9. The ground and lower levels of the west elevation in 1984 (City of Melbourne Libraries online Heritage Collection, Reference no. Butler13723).

SITE DESCRIPTION

The Former Australia Pacific House at 136-144 Exhibition Street is an 11-storey commercial building located on the east side of Exhibition Street between Bourke Street and Little Collins Street. Constructed from 1975-1978 to a design by McIntyre McIntyre & Partners, the multi-storey building is an example of the Post-War Modernist style.

The building is rectangular in form with narrow front and rear facades facing Exhibition Street and Westwood Place at the rear, and broad facades parallel to Bourke Street. Although not located on a corner site, the adjacent low-rise building at the corner of Bourke Street enables a clear view of the north façade of the building. The service core abuts an adjacent building to the south and is recessed at both the west end (Exhibition Street) and the east end (Westwood Place), allowing the insertion of windows in the upper levels of the south wall. A single storey shopfront has been inserted in the recess at Exhibition Street.

The structure of the tower results in a contrasting articulation of the main facades to the west and north. The building is of reinforced concrete column and slab construction throughout with prestressed and post-tensioned concrete T-beams, running in a north-south direction across all floors as a single span, providing support to the concrete floor slabs. Clearly expressing the structure of the building, the ten bow-shaped edge beams of each floor form part of the front (west) and rear (east) facades. These distinctively shaped T-beams span between concrete corner piers and alternate with continuous strips of lightly framed glazing, forming a distinctly horizontal composition.

In contrast, the north façade is a glazed screen which is set behind a grid of round concrete columns and broad concrete spandrels, with safety rails set between columns. A deep concrete parapet, which crowns this façade, has been used for large visible signage.

Architectural drawings indicate that a bush hammered concrete finish was applied to the main façade and an off-form concrete finish was applied to the columns. It appears that these finishes may have been retained.

The ground floor foyer, with mezzanine level, has been modified with shopfronts inserted in Exhibition Street. As a result, the lower concrete T-beam on the front façade has been obscured (or possibly removed). The original architectural scheme included a basement garden court accessed by a curved stair and ground level bridge. This is no longer evident from the public realm.

INTEGRITY

The Former Australia Pacific House, including the original form and the detailing of the exterior of the building above street level, remains highly intact from its original 1975-1978 construction. Works to the building at street level have altered the original design at this frontage.

Overall, the building retains a high degree of architectural integrity to the Post-War Modernist style in fabric, form and detail. While the building has undergone alterations at street level, these do not diminish the ability to understand and appreciate the place as a fine example of a Modernist multi-storey commercial building.

COMPARATIVE ANALYSIS

The Former Australia Pacific House at 136-144 Exhibition Street is a fine and representative example of the Post-War Modernist style and clearly demonstrates the typical characteristics of a 1960s to

mid-1970s multi-storey commercial building design. In its use of prestressed and post-tensioned concrete beams, the building demonstrates the advances made in concrete technology from the 1960s, while the trabeated structural system is clearly expressed on the north façade of the building with a grid of concrete columns and broad concrete spandrels set in front of a glazed screen. Despite modifications made to the building at street level, the upper facades of the Former Australia-Pacific House remain highly intact to its original design and can be clearly observed from Exhibition Street and Bourke Street.

There are a number of buildings within the Hoddle Grid in the City of Melbourne which were constructed in the same period and display similar characteristics to the Former Australia Pacific House. These are detailed below.

State-significant places

A small number of 1960s to mid 1970s buildings in the Hoddle Grid within the City of Melbourne have been assessed as being of State-level significance and are included in the Victorian Heritage Register (VHR). These include:

- Total House, 170-90 Russell Street (Bogle & Banfield 1964-65; VHR H2329 & HO1095)
- Former Hoyts Cinema Centre, 134-44 Bourke Street (Peter Muller 1966-69)
- Victorian Government Offices, Treasury Reserve Precinct (Yuncken Freeman 1967-68 – outside the Hoddle Grid)
- Eagle House, 473 Bourke Street (Yuncken Freeman 1971-72; VHR H1807 & HO901)
- BHP House, 130-148 William Street (Yuncken Freeman 1969-72; VHR H1699 & HO767).

Locally-significant places

As only a piece-meal evaluation of postwar buildings within the Hoddle Grid in the City of Melbourne has previously occurred, few buildings from this period are currently included in the Heritage Overlay of the Melbourne Planning Scheme on a permanent basis. Those that are, are generally currently included within Heritage Precincts but are recommended for inclusion in the Heritage Overlay as Individual Heritage Places, as follows:

Precinct Heritage Overlay



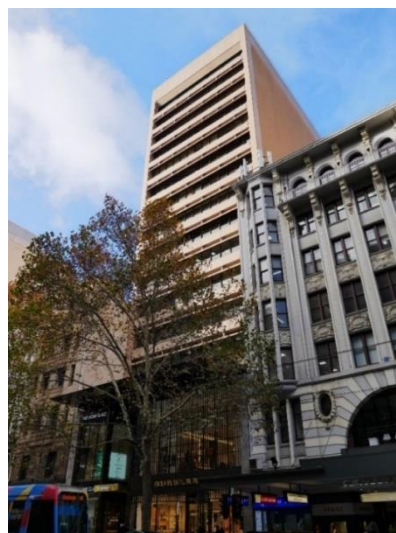
Former Reserve Bank of Australia, 56-64 Collins Street (Commonwealth Department of Works, 1964-66) included in HO504 Collins East Precinct as a Contributory place.



Former State Savings Bank of Victoria, 45-63 Swanston Street, (Buchan Laird & Buchan, 1974) included in HO505 Flinders Gate Precinct (Non-contributory).



Wales Corner, 221-231 Collins Street (Stephenson & Turner, 1964-66) included in HO502 The Block Precinct (fronting Collins Street) & HO506 (fronting Swanston Street) Collins East Precinct as a Contributory place.



Former Commercial Banking Company of Sydney Building, 251-257 Collins Street, (Bates Smart & McCutcheon, 19741-73 included in HO502 The Block Precinct (fronting Collins Street) & HO506 (fronting Flinders Lane) (Non-contributory).

One individual heritage place recently included in a site-specific Heritage Overlay on a permanent basis is the Scottish Amicable Building, 128-146 Queen Street (Yuncken Freeman, 1966) (HO1213):



Scottish Amicable Building, 128-146 Queen Street

Other examples

Despite the demolition of many 1960s and 1970s multi-storey commercial buildings in the City of Melbourne, a number of fine and highly representative examples of this building type that are not currently included in the Heritage Overlay on a permanent basis have been retained with sufficient integrity to demonstrate this class of place. These buildings clearly illustrate the advancement of construction techniques from the 1960s through to the mid 1970s and demonstrate the broad range of design approaches of the period. The podiums of the majority of these places have been modified at street level. Examples include:



Former RACV Club, 111-129 Queen Street (Bates Smart & McCutcheon, 1961) (Interim HO1068)



Office Building, 178-188 William Street (McIntyre McIntyre & Partners, 1972-73)



Royal Insurance Group Building, 430-442 Collins Street, (Yuncken Freeman, 1965) (Interim HO1010)



Office Building, 516-520 Collins Street (architect unknown, c1974)



Former Guardian Building, 454-456 Collins Street (Bates Smart & McCutcheon, 1960-61)



Former South British Insurance Company Ltd Building, 155-161 Queen Street (Bates Smart & McCutcheon, 1961-62)



Former State Savings Bank, 258-264 Little Bourke Street (Meldrum & Partners, 1961)



MLA Building, 308-336 Collins Street (Stephenson & Turner, 1963)



Royal Mail House, 255-267 Bourke Street (D Graeme Lumsden, 1963)



Former Sleigh Corner Building, 158-164 Queen Street (Bates Smart & McCutcheon, 1964)



The Former Houston Building, 184-192 Queen Street (E & G Kolle & Associates, 1965)



AMP Tower and St James Building Complex, 527-555 Bourke Street (Skidmore Owings & Merrill in association with Bates Smart & McCutcheon, 1965-69)



Former Dalgety House, 457-471 Bourke Street (Peddle Thorp & Walker, 1966-68)



Former State Saving Bank of Victoria, 233-243 Queen Street (Godfrey & Spowers, Hughes Mewton and Lobb, 1967-68)



Former Legal & General House, 375-383 Collins Street (B Evans, Murphy, Berg & Hocking, 1967)



Former AMP Building, 344-350 Collins Street (Godfrey & Spowers, Hughes Mewton and Lobb, 1966-68)



Equitable House, 335-349 Little Collins Street (unknown architect, 1968)



Former Australia-Netherlands House, 468-478 Collins Street (Meldrum & Partners with Peddle Thorp Walker, 1968-70)



Former Methodist Church Centre, 130-134 Little Collins Street (Bates Smart & McCutcheon, 1966-67)



Cowan House, 457-469 Little Collins Street (E & G Kolle, 1969)



Lonsdale Exchange, 447-553 Lonsdale Street (Commonwealth Department of Works, 1969)



Former Dillingham Estates House, 114-128 William Street (Yuncken Freeman, 1976) (Interim HO1180)



Former Bryson Centre, 174-192 Exhibition Street (Perrot Lyon Timlock & Kesa, 1970-72)



Former Commonwealth Banking Corporation Building, 359-373 Collins Street (Bates Smart & McCutcheon, c1972-75)



Nubrick House, 269-275 William Street (Buchan Laird & Buchan, 1972)



Former Law Department Building, 221-231 Queen Street (Fischer Group, 1972)



Former National Bank of Australasia Stock Exchange Branch, 85-91 Queen Street (Meldrum & Partners, 1973)



Former MLC Building, 303-317 Collins Street (Demaine, Russell, Trundle, Armstrong & Orton, c1970-1973)



Office Building, 589-603 Bourke Street (Peddle Thorp de Preu, 1973-75)

Analysis

As a fine, highly intact and highly representative example of a Post-War Modernist commercial building, the Former Australia-Pacific House at 136-144 Exhibition Street clearly demonstrates an important phase in the architectural development of multi-storey office buildings within the Hoddle Grid in the City of Melbourne. Similar to a number of 1960s to mid-1970s buildings listed above, the subject building clearly demonstrates this class of place.

ASSESSMENT AGAINST CRITERIA

✓	CRITERION A Importance to the course or pattern of our cultural or natural history (historical significance).
	CRITERION B Possession of uncommon rare or endangered aspects of our cultural or natural history (rarity).
	CRITERION C Potential to yield information that will contribute to an understanding of our cultural or natural history (research potential).
✓	CRITERION D Importance in demonstrating the principal characteristics of a class of cultural or natural places or environments (representativeness).
	CRITERION E Importance of exhibiting particular aesthetic characteristics (aesthetic significance).
	CRITERION F Importance in demonstrating a high degree of creative or technical achievement at a particular period (technical significance)
	CRITERION G Strong or special association with a particular community or cultural group for social, cultural or spiritual reasons. This includes the significance of a place to Indigenous peoples as part of their continuing and developing cultural traditions (social significance).
	CRITERION H Special association with the life or works of a person, or group of persons, of importance in our history (associative significance).

RECOMMENDATIONS

Recommended for inclusion in the Schedule to the Heritage Overlay of the Melbourne Planning Scheme as an Individual Heritage Place.

Recommendations for the Schedule to the Heritage Overlay (Clause 43.01) in the Melbourne Planning Scheme:

MELBOURNE PLANNING SCHEME

EXTERNAL PAINT CONTROLS	No
INTERNAL ALTERATION CONTROLS	No
TREE CONTROLS	No
OUTBUILDINGS OR FENCES (Which are not exempt under Clause 43.01-4)	No
INCLUDED ON THE VICTORIAN HERITAGE REGISTER	No
PROHIBITED USES MAY BE PERMITTED	No
ABORIGINAL HERITAGE PLACE	No

OTHER

N/A

REFERENCES

Contextual History references contained within *City of Melbourne Hoddle Grid Heritage Review: Postwar Thematic Environmental History 1945-1975*

Architecture Australia (June 1990), 'Peter McIntyre: RAIA Gold Medal 1990'.

Building Application File (BAF), No. 44960 (1974), City of Melbourne.

Building Application Index (BAI), City of Melbourne.

Building Application Plans (BAP), City of Melbourne.

CBC Officers Club, 'CAGA',

<<http://www.cbcbank.com.au/images/Matters%20of%20Interest/CAGA/CAGA.htm>> accessed 23 January 2020.

City of Melbourne Libraries online Heritage Collection, reference nos. as cited.

Goad, Philip (1983), 'Peter McIntyre: Early Work 1950 – 1961' Investigation project, University of Melbourne, Department of Architecture,.

Goad, Philip (2012), 'McIntyre Partnership' in Philip Goad & Julie Willis's (Eds.) (2012), *The Encyclopedia of Australian Architecture*, Port Melbourne.

Goad, Philip (2012), 'McIntyre, Peter & Dione' in Philip Goad & Julie Willis's (Eds.) (2012), *The Encyclopedia of Australian Architecture*, Port Melbourne.

McIntyre Partnership, 'About', <<https://mcintyrepartnership.com/about-1>>, accessed 2 July 2019.

The Age.

The Sydney Morning Herald.

PREVIOUS STUDIES

Central Activities District Conservation Study 1985	Ungraded
--	----------

Central City Heritage Review 1993	Ungraded
--	----------

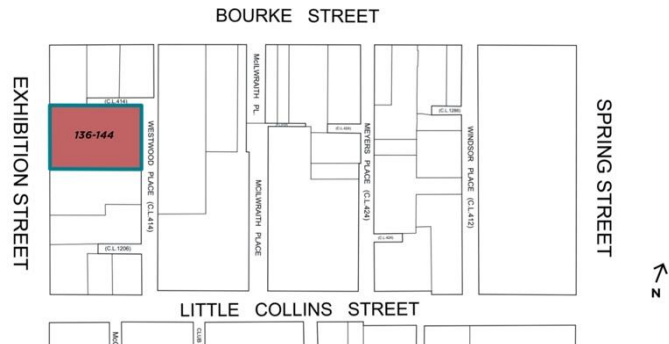
Review of Heritage Overlay Listings in the CBD 2002	Ungraded
--	----------

Central City Heritage Review 2011	Ungraded
--	----------

STATEMENT OF SIGNIFICANCE

Heritage Place: Former
Australia Pacific House

PS ref no:
HOXXXX



What is significant?

The Former Australia Pacific House, 136-144 Exhibition Street, a multi-storey office building constructed from 1975-1978.

Elements that contribute to the significance of the place include (but are not limited to):

- The building's original external form, materials and detailing
- The building's structural system
- The building's high level of integrity to its original design.

Later alterations made at street level are not significant.

How it is significant?

The Former Australia Pacific House at 136-144 Exhibition Street is of historical and representative significance to the City of Melbourne.

Why it is significant?

Constructed from 1975-1978 to a design by McIntyre McIntyre & Partners, the Former Australia Pacific House has a clear association with the postwar building boom which transformed central Melbourne into a modern high-rise city. The design of these commercial buildings from the late 1950s to the mid-1970s – many of which were architect designed – was driven by the commercial demands and the prestige afforded by a dominant city presence (Criterion A).

The Former Australia Pacific House is a fine and highly intact representative example of a Post-War Modernist building. The building strongly reflects the style which was popular in the 1960s to the mid-

1970s, particularly in central Melbourne. Constructed as an 11-storey structure, the Former Australia Pacific House clearly demonstrates typical characteristics of a later postwar commercial building, including walls which clearly express the trabeated structural system with alternating horizontal strips of glazing and distinctive solid spandrels to the front and rear facades, as well as a grid of solid spandrels and round columns to the north, and the use of materials such as precast concrete. These demonstrate important aspects of the Post-War Modernist style (Criterion D).

Primary source

Hoddle	Grid	Heritage	Review	(Context	&	GJM	Heritage,	2020)
--------	------	----------	--------	----------	---	-----	-----------	-------