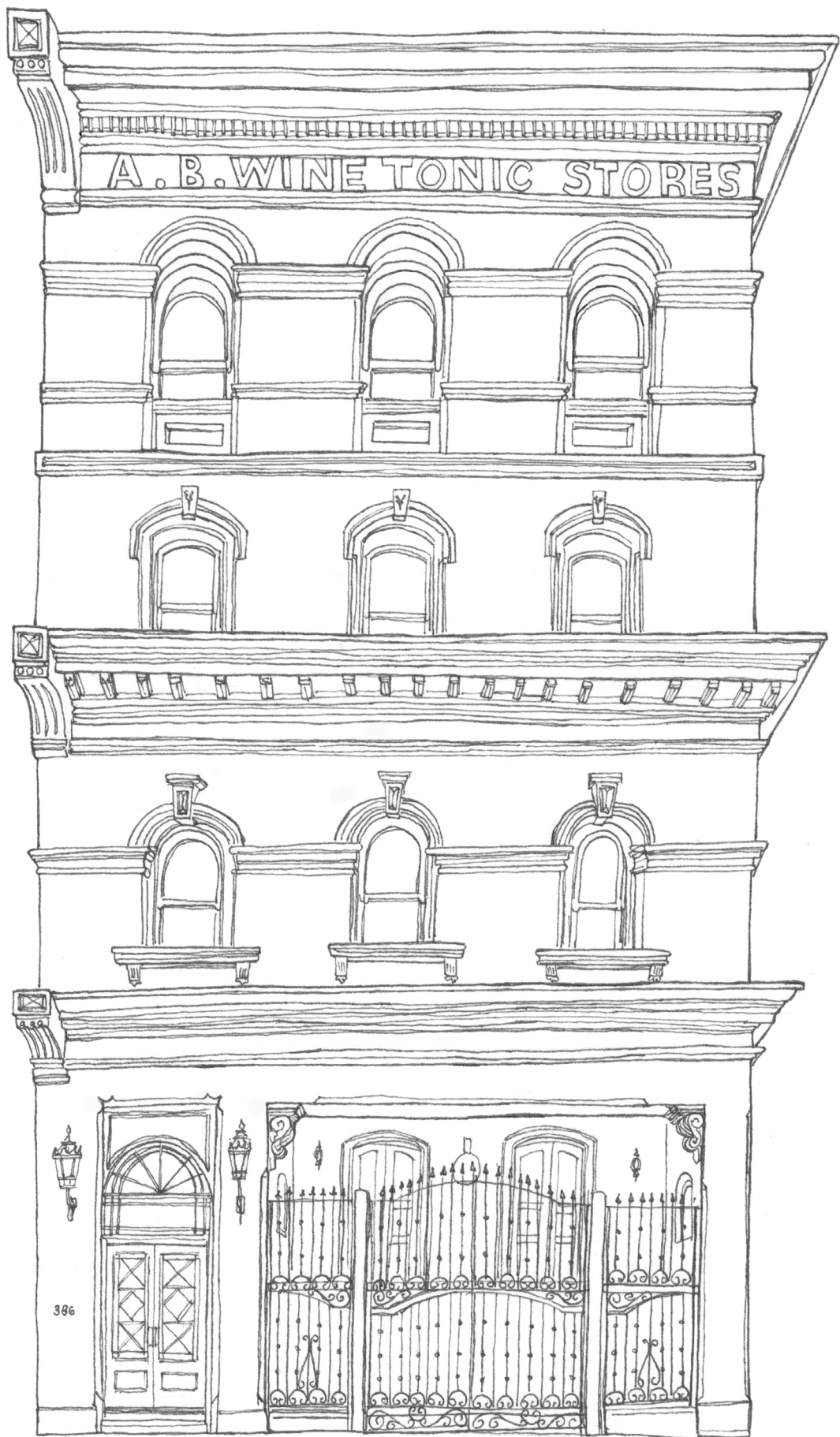


GORDON BUILDINGS

384-386 Flinders Lane



This Italianate Victorian office was built in 1885. It once housed the studios of painters Arthur Streeton, Charles Conder and Charles Richardson.

This colouring in sheet has been produced as part of the Hoddle Grid Heritage Review, with local artist Lewis Brownlie. Find out more here: participate.melbourne.vic.gov.au/AmendmentC387