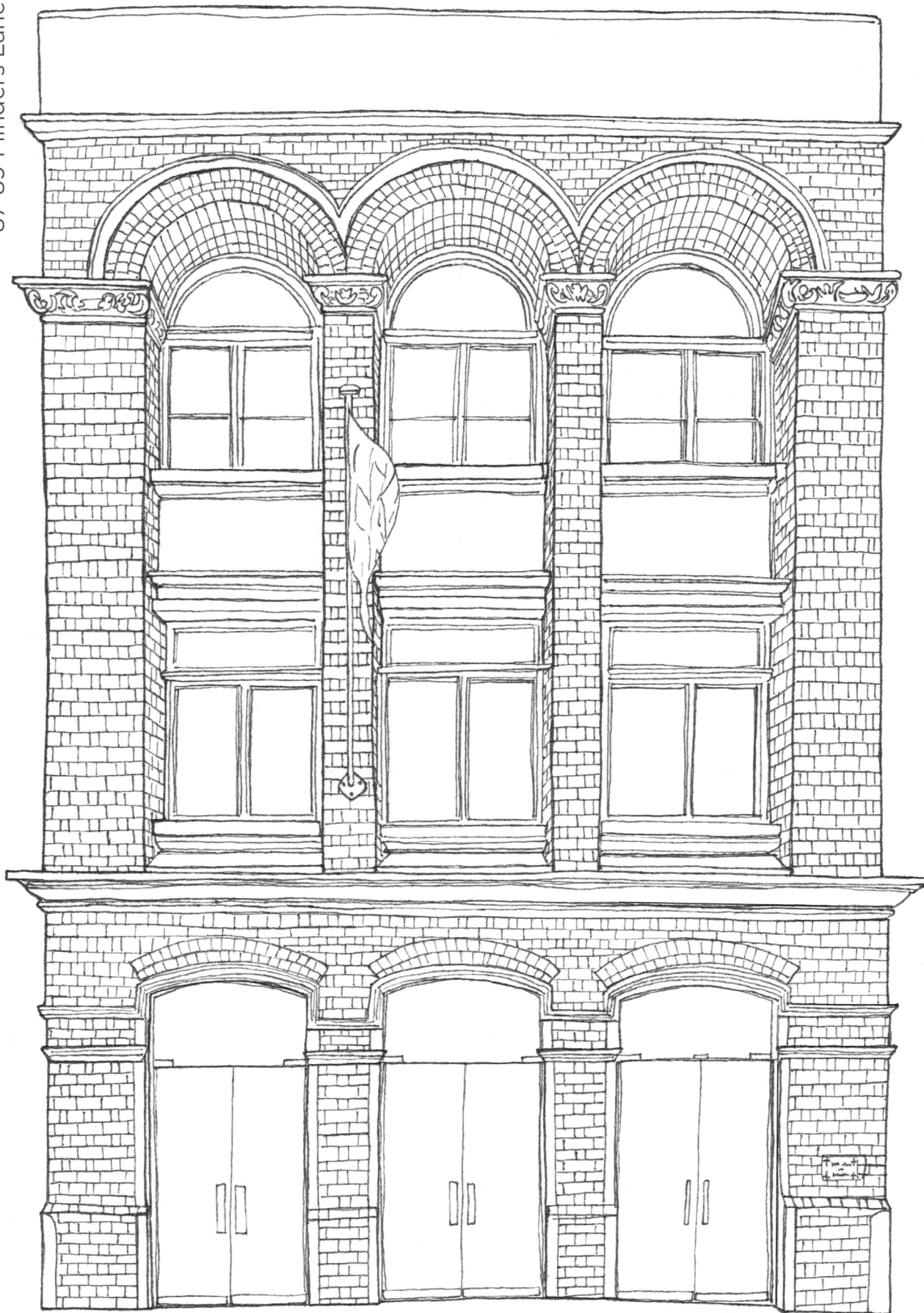


THE SWISS CLUB

87-89 Flinders Lane



This American Romanesque factory/warehouse was built in 1906 for the rag trade that occupied Flinders Lane east.

This colouring in sheet has been produced as part of the Hoddle Grid Heritage Review, with local artist Lewis Brownlie. Find out more here: participate.melbourne.vic.gov.au/AmendmentC387