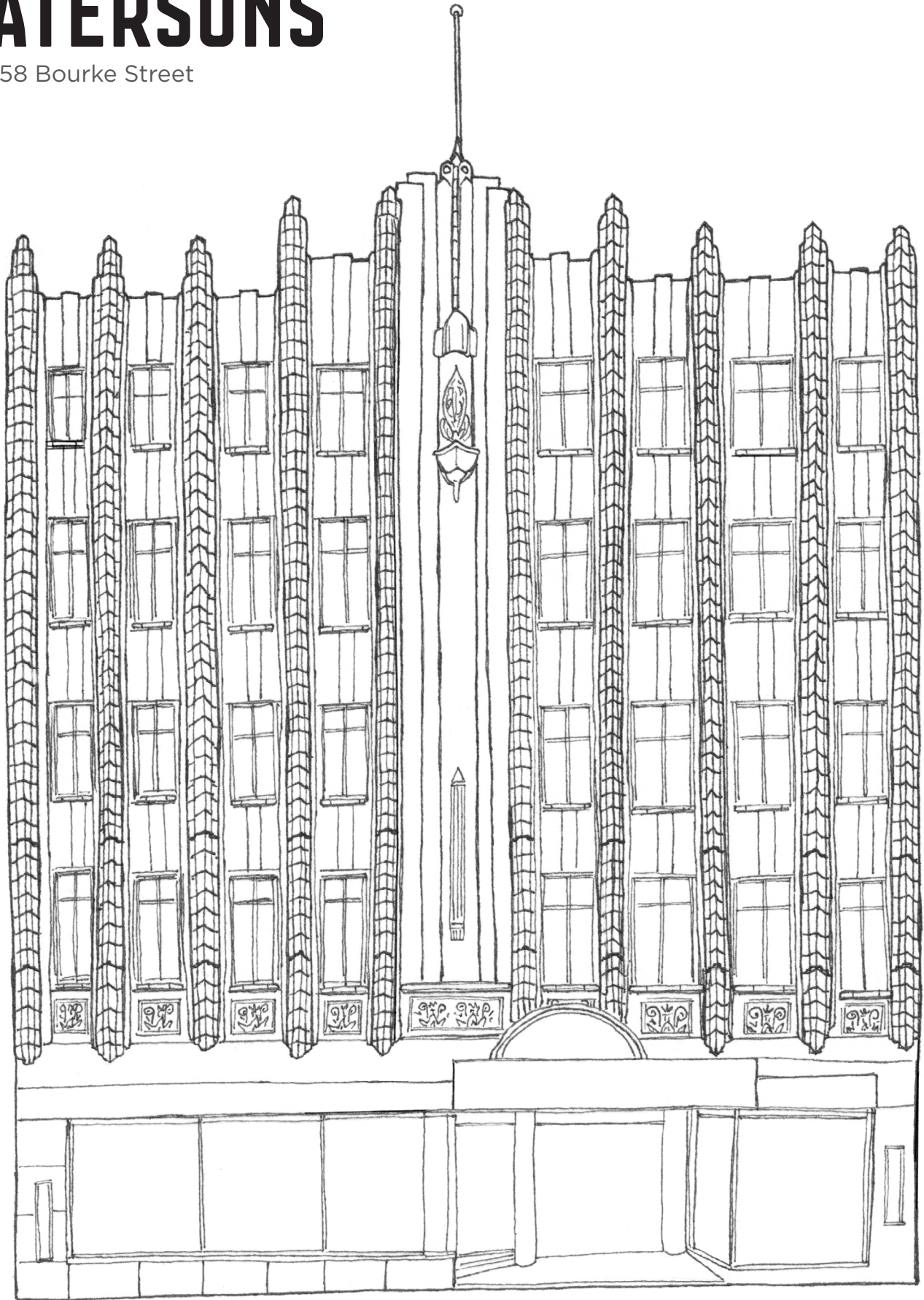


# PATERSONS

152-158 Bourke Street



This moderne style shop was built for Patersons furniture retailers in 1934.

This colouring in sheet has been produced as part of the Hoddle Grid Heritage Review, with local artist Lewis Brownlie. Find out more here: [participate.melbourne.vic.gov.au/AmendmentC387](https://participate.melbourne.vic.gov.au/AmendmentC387)