

OUR NEIGHBOURHOODS AT A GLANCE

DOCKLANDS

Overview of Docklands

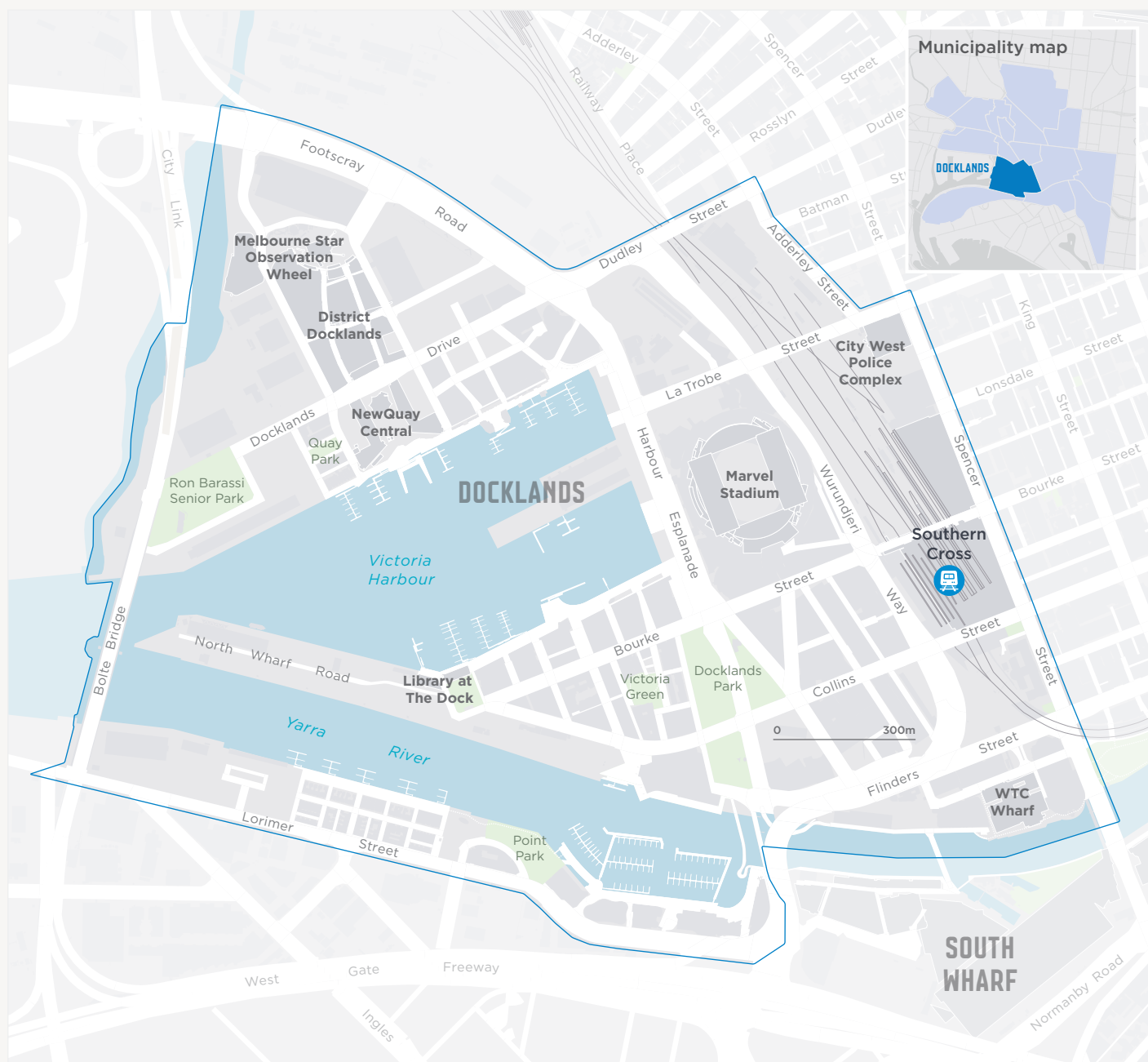
Docklands is a high density residential, commercial and entertainment focused waterfront neighbourhood located to the west of the city centre around the historic Victoria Harbour and Yarra River Birrarung.

Docklands was once a shipping and light industrial area, but since urban renewal began in the 1990s it has become home to more than 10,000 residents and 58,000 workers. Approximately 60 per cent of Docklands' residents were born overseas, and the median age is 31. In 2021, a new primary school opened to cater to the growing number of families with school age children.

The waterfront is Docklands' great asset, an active space servicing approximately 200,000 people per year for charter purposes, recreational activities and on-water events. Docklands is also home to Marvel Stadium, the Melbourne Star Observation Wheel, District Docklands and Library at the Dock, a multi-purpose community hub.

Development Victoria manages this urban renewal project, through partnerships with developers, the Victorian Government and the City of Melbourne.

Docklands in the City of Melbourne



Features of Docklands

Population



Residential population

10,957



Number of businesses

1,216

Data was sourced from the 2016 Australian Bureau of Statistics (ABS) Census of Population and Housing. To learn more about this data, including definitions, visit: abs.gov.au/census/guide-census-data

Residents



Age (median years)

31.8



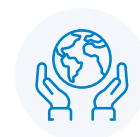
Youth (12-25 years)

23%



Older (60+ years)

9%



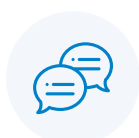
Born overseas

60%



Main overseas country
of birth: China

16%



Speaks a language
other than English
(LOTE) at home

53%



Main non-English
language spoken:
Mandarin

18%



Attending a tertiary
education institution

23%



Main occupation:
Professionals

41%



Main work travel
method: tram

29%

Data was sourced from the 2016 Australian Bureau of Statistics (ABS) Census of Population and Housing. To learn more about this data, including definitions, visit: abs.gov.au/census/guide-census-data

Households



Occupied private dwellings

4,663



Average household size (persons)

2.1



Weekly household income (median)

\$1,870



Low income households (less than \$650 p.w.)

18%



High income households (more than \$2,500 p.w.)

29%



Family households

54%



Lone person households

31%



Renting

62%



Living in a flat or apartment

97%

Data was sourced from the 2016 Australian Bureau of Statistics (ABS) Census of Population and Housing. To learn more about this data, including definitions, visit: abs.gov.au/census/guide-census-data

Top Three Employment Types



Business Services

10,598
15%



Public Administration and Safety

8,154
11%



Finance and Insurance

26,566
37%

Data was sourced from the 2019 City of Melbourne Census of Land Use and Employment (CLUE). To learn more about this data, including definitions, visit: melbourne.vic.gov.au/about-melbourne/research-and-statistics/city-economy/census-land-use-employment/Pages/clue.aspx

Jobs by Status



Full time

53,051
73%



Part time

6,714
9%



Casual

5,825
8%



Contract

7,090
10%

Data was sourced from the 2019 City of Melbourne Census of Land Use and Employment (CLUE). To learn more about this data, including definitions, visit: melbourne.vic.gov.au/about-melbourne/research-and-statistics/city-economy/census-land-use-employment/Pages/clue.aspx

Land Use (Percentage of total neighbourhood - list not exhaustive)



Office

18%



Residential
accommodation

16%



Parking - Commercial
and Private

16%



Public
Open Space

4%



Sports and
Recreation - Outdoor

2%



Indoor
Entertainment

2%



Retail

1%



Commercial
Accommodation

2%



Educational /
Research

1%



Storage /
Wholesale

0.4%



Performances, Conferences,
Ceremonies

0.2%

Data was sourced from the 2019 City of Melbourne Census of Land Use and Employment (CLUE). To learn more about this data, including definitions, visit: melbourne.vic.gov.au/about-melbourne/research-and-statistics/city-economy/census-land-use-employment/Pages/clue.aspx

Development Activity (major new commercial and residential property development)

Under construction



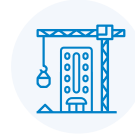
Developments

5



Residential dwellings

586



Student accommodation

0



Hotel/serviced apartments

189

Approved



Developments

28



Residential dwellings

7,367



Student accommodation

0



Hotel/serviced apartments

978

Under construction (Area sqm)



Office space

34,137



Retail space

4,046



Office space

168,164



Retail space

15,188

Approved (Area sqm)

Data was sourced from the November 2020 City of Melbourne's Development Activity Monitor (DAM).
To learn more about this data, including definitions, visit: developmentactivity.melbourne.vic.gov.au/

Services in Docklands

Community Facilities and Local Amenities (list not exhaustive)

Childcare services

Giraffe Early Learning Centre Docklands
Kool Kidz@Goods Shed Docklands
Little Assets
Little Stars @ Southern Cross
Penguin Childcare
Rogan Family Care
Gowrie @ The Harbour

Libraries and Community Spaces

Community Hub at the Dock
Library at the Dock
Melbourne City Marina
Yarra's Edge Community Space
The Hub @ Docklands
Docklands Community Garden

Recreation Parks and Open Spaces

Rob Barassi Senior Park
Docklands Community Hub Reserve
Point Park
Spencer Street Plaza
Vicurban - Docklands Park
Victoria Green
Buluk Park
Quay Park
Collins Street and Tom Thumb Lane Park
Wharfs Landing

Museums and Cultural spaces

Artvo
Victoria Police Museum
Dialogue in the Dark

Primary Healthcare Facilities

Docklands Family Medical
MC Medical & Dental
Peak Sports Medicine
Victorian Harbour Medical Centre

Educational Institutions

Bendigo Kangan Tafe - Automotive Centre Of Excellence
Kaplan Business School / International / Professional
Open Universities Australia Pty Ltd
Boat School
BTS Australasia Pty Ltd
Calculation
Deakin University
Linkfluencer
SACE Australia
The Academy of Interactive Entertainment Limited
Total Business Service & Training Pty Ltd

Police Services

Victoria Police
Victoria Police - Fingerprint Facility
Victoria Police - Recruitment

Sporting and Physical Recreation Venues

Marvel Stadium
O'Brien Group Arena

Council investments in Docklands

Recently completed

- Seafarers Rest Park - community consultation and design brief finalised

Coming soon

- Cycle infrastructure - new bike lanes
- Seafarers Rest Park - community consultation and design development

Further information

Docklands Community and Place Plan: melbourne.vic.gov.au/community/strong-communities
Participate Melbourne: participate.melbourne.vic.gov.au/docklands

Please note this profile contains information that was collected prior to the COVID-19 event and may not represent the current situation. The information does, however, provide a baseline which shows where the population was at the time it was collected. Refer to each category to see the source of the data and when the information presented was collected.