

EXCEPTIONAL TREE REGISTER 2019



Acknowledgements

The City of Melbourne would like to acknowledge that these exceptional trees grow on the traditional land of the Kulin Nation.

We would like to thank all of the individuals and organisations who nominated trees and raised the profile of this register. Their efforts allowed us to find the exceptional trees that we celebrate here.

We would like to thank the owners and managing authorities of the properties that the trees are on for their assistance in this process and for being custodians of such important assets in our urban forest. With special thanks to the University of Melbourne and the Royal Melbourne Zoo for their support of this register.

We would also like to thank those who made up our expert assessment panel for their time and effort, members included:

Round One (2012): Dr. Sue Hughes (The National Trust of Australia (Victoria)), Dr. Greg Moore (University of Melbourne, Burnley Campus), Clare Hart (Parks and Gardens Advisory Committee), John Fordham (Independent Arborist), Planner (City of Melbourne) and Manager of Urban Landscapes (City of Melbourne).

Round Two (2019): Dr. Greg Moore (Chair of the National Trust's Register of Significant Trees), John Fordham (Independent Arborist and National Trust Representative), Dean Stewart (Aboriginal Tours and Education), Steve Livesley (Associate Professor, Ecosystem and Forest Sciences, University of Melbourne), Ian Shears (Ian Shears Green Infrastructure and Urban Forestry) and Ecologist (City of Melbourne).

All Round One photographs, maps and tree reports in this document were compiled by Homewood Consulting Pty Ltd, with the final peer review undertaken by Tree Logic Pty Ltd.

All Round Two photographs, maps and tree reports in this document were compiled by Greenwood Consulting Pty Ltd, with the final peer review undertaken by Tree Logic Pty Ltd.

Contents

| | |
|--|-----------|
| 1. Background..... | 4 |
| 2. Introduction..... | 5 |
| 3. Nominations and assessment criteria | 6 |
| Nominations..... | 6 |
| Defined assessment criteria of 'Exceptionality' for the trees..... | 7 |
| 4. Tree assessment information | 10 |
| 5. Frequently Asked Questions..... | 14 |
| What is the Exceptional Tree Register? | 14 |
| Why do we need the Exceptional Tree Register? | 14 |
| Why would I want to protect a tree on my property? | 14 |
| What land is included? | 14 |
| Why aren't trees on council land included? | 14 |
| How can I nominate a tree for the Exceptional Tree Register? | 15 |
| Can I nominate a tree on somebody else's property?..... | 15 |
| Can I nominate a tree if I don't live in the City of Melbourne? | 15 |
| What types of trees will be considered?..... | 15 |
| Who determines if a tree is exceptional? | 15 |
| Can I make an appeal if my tree has not been determined as exceptional? | 15 |
| How are the City of Melbourne's Exceptional Tree Register trees protected? | 16 |
| How long does it take for a nominated tree to go through the listing process? | 16 |
| Can I access the Arborist report? | 16 |
| What should be done if a listed Exceptional Tree Register tree seems sick or damaged in some way? | 16 |
| How are trees removed from the register? | 17 |
| Will the register be updated?..... | 17 |
| 6. How to use this Register | 19 |
| 7. Properties within Tree Protection Zones | 20 |
| 8. Tree location maps..... | 26 |
| All Exceptional Tree Register tree location overview map | 26 |
| Melbourne Zoo map with Exceptional Tree Register tree locations..... | 27 |
| University of Melbourne map with Exceptional Tree Register tree locations | 28 |
| 9. Report Index..... | 29 |

1. Background

The Exceptional Tree Register was developed by the City of Melbourne in response to a resolution by Council in June 2011 to '*develop a register of exceptional trees on private property within the municipality by June 2012 and protect these trees through the planning scheme*'. The register was endorsed by Council at the 3 July 2012 Future Melbourne Committee meeting. It provides an opportunity to recognise, celebrate and protect exceptional trees on land within the municipality that is not owned or managed by the City of Melbourne.

To be included on the Exceptional Tree Register, trees must meet a minimum of one of the following exceptional criteria: aboriginal association; aesthetic value; curious growth form; environmental/micro-climate services; historical value; horticultural value; location or context; outstanding example of species; outstanding habitat value; outstanding size; particularly old; rare or localised; or social, cultural or spiritual significance. An expert assessment panel reviews all nominations.

Planning Scheme Amendment C212 protects trees on the City of Melbourne Exceptional Tree Register 2012 by applying an Environmental Significance Overlay (ESO). An Environmental Significance Overlay is a planning control which is used to protect all exceptional trees and affected properties. This means that proposed works to or in the Tree Protection Zone of the tree will require a planning permit.

Amendment C212 was adopted by Council in November 2014 and approved by the Minister for Planning on 30 April 2015. Amendment C212 replaced the Amendment C211 interim controls that were applied to the nominated exceptional trees until Amendment C212 received Ministerial approval.

2. Introduction

The City of Melbourne's Exceptional Tree Register includes a total of 268 trees from across the municipality. The register offers the opportunity to recognise, celebrate and protect the exceptional trees in our city that exist on land not owned or managed by the City of Melbourne.

The Exceptional Tree Register was developed by the City of Melbourne in response to a resolution by the Future Melbourne Eco-City Committee in June 2011 to develop and maintain a register of exceptional trees on private property within the municipality. This is an endorsed action in the Urban Forest Strategy 2012–2032. The Exceptional Tree Register 2012 was endorsed by Council at the 3 July 2012 Future Melbourne Committee meeting, with the updated register ('Exceptional Tree Register 2019') endorsed by Council at the 21 July 2020 Future Melbourne Committee meeting.

Once formally listed on the Exceptional Tree Register, the land where the tree is located and those properties included in the Tree Protection Zone (TPZ) are included in a Planning Scheme Amendment where the property is listed in Schedule 2 to the Environmental Significance Overlay (ESO2 schedule). The listing triggers a planning permit requirement to remove, destroy or lop the listed tree, or to undertake any works within the Tree Protection Zone. The landholder is required to apply for a permit from the City of Melbourne Planning Department and should seek tree protection advice from a suitably qualified Arborist.

The Exceptional Tree Register was established in 2015 following a public nomination process in 2012. In 2019, a second round of nominations was held to expand and update the register. Each exceptional tree from both the first and second round of nominations is detailed in this Exceptional Tree Register.

The Exceptional Tree Register includes trees that have been nominated by the community, organisations, property managers, staff and tree owners. The trees were assessed by a qualified Arborist, peer reviewed and presented to an expert assessment panel to ensure accuracy, robustness and transparency and to confirm that it meets the criteria for the register.

This Exceptional Tree Register aims to:

- Recognise and celebrate trees in the City of Melbourne by promoting and raising awareness of existing exceptional trees.
- Identify exceptional trees that should be protected through the Melbourne Planning Scheme so that planning permission is required to undertake any action that may harm the tree.
- Encourage shared responsibilities for the retention and care of trees that span property boundaries.
- Promote tree planting on private properties – trees that may become the exceptional trees of the future and increase canopy cover in our city.

3. Nominations and assessment criteria

Nominations

Round One

The City of Melbourne developed a nomination and assessment process for exceptional trees in consultation with the National Trust and other key stakeholders. Round One of the Exceptional Tree Register launched on 30 November 2011.

Nominations were received from the community, private residents, City of Melbourne staff, and bodies such as the National Trust of Australia (Victoria), the University of Melbourne and the Royal Melbourne Zoo. A total of 288 trees were nominated either alone or in groups.

Trees were assessed by an independent Arborist between March and May 2012. A report was produced for each tree including information from the Arborist's assessment, a statement of significance and photographs depicting register values, health and growing conditions. Each nomination was reviewed by the expert assessment panel against the criteria to determine which trees should be recommended for inclusion to the Exceptional Tree Register.

Round Two

Round Two nominations were open from 1 December 2018 to 15 March 2019 with nominations received from the community, private residents, City of Melbourne staff, and bodies such as the National Trust of Australia (Victoria), the University of Melbourne and Melbourne Museum. A total of 161 eligible trees were nominated either alone or as groups.

Trees were assessed by an independent Arborist between May and July 2019, and peer reviewed by a second independent Arborist between August and September 2019. Each nomination was reviewed by the expert assessment panel against the criteria to determine which trees should be recommended for inclusion to the Exceptional Tree Register.

Future nominations

The Exceptional Tree Register is a working document that will change to reflect the dynamic nature of our urban forest.

Nominations are accepted at any time but will not be reviewed until there is a planned update of the register. This will occur approximately every five years. For more information:

Visit www.melbourne.vic.gov.au/exceptionaltreeregister
or email melbourneurbanforest@melbourne.vic.gov.au

Defined assessment criteria of ‘Exceptionality’ for the trees

The criteria for determining exceptional trees in the City of Melbourne were informed by those used in:

- The National Trust of Australia (Victoria) criteria for identification and classification of significant trees in Victoria
- Heritage Victoria criteria for Assessment of Cultural Heritage Significance
- The Australian International Charter for the Conservation of Monuments and Sites (ICOMOS) Burra Charter criteria
- City of Melbourne’s Urban Forest Strategy

The Exceptional Tree Register criteria are given in Table 1 where a short description and some examples are provided for each criterion.

Table 1. Exceptional Tree Register assessment criteria

| Criteria | Description | Examples (but not limited to) |
|--------------------------------|---|---|
| Horticultural Value | Any tree that is of outstanding horticultural or genetic value and could be an important source of propagating stock, including specimens that are particularly resistant to disease or exposure. | <ul style="list-style-type: none"> tolerance selection (pest and disease) propagating potential scientific value |
| Rare or Localised | Any tree species or variety that is rare or of very localised in distribution, enhancing the diversification of the local urban forest. | <ul style="list-style-type: none"> only known species rare species (2 to 50 known specimens) end of natural range disjunct community one of few examples of the family/genus/species in precinct |
| Location or context | Any tree that occurs in a unique location or context so as to provide a major contribution to the landscape and/or local place character. | <ul style="list-style-type: none"> important landmark contribution to landscape (high visibility of tree, presence on a ridgeline) historic cemetery remnant native vegetation end of natural range historic planting style |
| Particularly old | Any tree that is particularly old or venerable. | <ul style="list-style-type: none"> old specimen (healthy/not in rapid or advanced decline) |
| Outstanding size | Any tree outstanding in size of some capacity. | <ul style="list-style-type: none"> height circumference canopy spread combinations of above |
| Curious growth form | Any tree that exhibits a curious growth form or physical feature. | <ul style="list-style-type: none"> curious growth form abnormal outgrowths fusion of branches unusually pruned unusually damaged (but healthy) |
| Outstanding example of species | Any tree that is an outstanding example of its species. | <ul style="list-style-type: none"> form and vigour reflecting an outstanding specimen of its species a well-established individual of the species of that age in the City of Melbourne that council wants to preserve and promote in the future urban canopy |

| | | |
|---|--|--|
| Aesthetic value | Any tree of outstanding aesthetic significance. | <ul style="list-style-type: none"> • prolific flowering • beautiful leaves • greening or screening function |
| Historical value | Any tree commemorating a particular occasion, including plantings by notable people, or having associations with an important event in local, state or national history. | <ul style="list-style-type: none"> • cultural group • military service • British royalty • Other royalty • visiting dignitary • Australian public figure • Victorian public figure • local public figure |
| Outstanding Habitat Value | Any tree that has outstanding value as habitat for indigenous wildlife. | <ul style="list-style-type: none"> • breeding habitat • roosting site • foraging habitat • wildlife corridor • refugia |
| Environmental/ micro-climate services | Any tree that provides a significant modification to the local micro-climate. | <ul style="list-style-type: none"> • providing significant shade or cooling • providing green in 'grey' area • halting or stabilising environmental degradation processes such as soil erosion, salinity, water table depth • acting as a wind break • linking canopy cover with other green areas or trees |
| Aboriginal Association | Any tree that has a recognised association with aboriginal people, or that is valued for continuing and developing cultural traditions. | <ul style="list-style-type: none"> • scarred tree • corroboree tree • canoe tree |
| Social, cultural or spiritual value | Any tree that is important to a community or cultural group for social, cultural or spiritual reasons. | <ul style="list-style-type: none"> • positive community engagement focussed around engagement with the tree • community sharing of harvest of food tree • cultural association and sense of place linked to particular tree • spiritual importance to a group of people |

4. Tree assessment information

Tree assessments were carried out by qualified Arborists.

Round One: Homewood Consulting Pty Ltd between March 2012 and May 2012, and peer reviewed by Treelogic Pty Ltd in 2013. Arboricultural assessment updates were undertaken by Treelogic Pty Ltd in August 2019, September 2019 and May 2020.

Round Two: Greenwood Consulting Pty Ltd between May to July 2019 and peer reviewed Treelogic Pty Ltd between August and September 2019.

Tree assessment criteria in the report for each tree are described below:

Tree Number: Unique ID Number for each tree/record.

Address: Property address where the tree trunk is located.

Location: Location of tree on the property.

Record Type:

- **Single Record:** Along with specific criteria and a statement of significance, single records hold information from the arboricultural assessments such as tree size, and all measurements required for the calculation of the Structural Root Zone and Tree Protection Zone (as described below).
- **Group Record:** Group records recognise the additional collective significance that a group of trees on the register contributes in a landscape context.

Number of Trees: The number of trees within the record.

Group Number: Any group numbers that the records fall within.

Botanical Name: The identity (the Latin combination of Genus/species) of the tree as determined by the Arborist on the day of assessment utilising the physical characteristics of the tree that are available on that day.

Common Name: The common name that the tree is known by.

Origin: The notation of "Origin" is defined as whether the specimen is indigenous, native or exotic in origin.

Table 2. Tree Origin Assessment Criteria

| Category | Description |
|------------------------|---|
| Melbourne (Indigenous) | Native to the greater Melbourne metropolitan area as defined by Flora of Melbourne (SGAPM, 1991). |
| Victorian (Native) | Native to Victoria but not the greater Melbourne Metropolitan area. |
| Australian (Native) | Native to Australia but not Victoria. |
| Exotic | Not native to Australia. |

In some instances, whether the specimen is evergreen or deciduous is also stated, whereby:

- Evergreen: Bearing foliage throughout the year; continually shedding and replacing leaves.
- Deciduous: Shedding leaves annually at the end of the growing season and then having a dormant period without leaves.

Diameter at Breast Height (cm): Trunk diameters (diameter at breast height - DBH) were measured at 1.4 metres above grade (soil level) unless otherwise indicated. Method for capturing trunk diameter and combining stem DBH as outlined in Appendix A Diameter at Breast Height (DBH) (Informative) in Australian Standard AS 4970-2009, Protection of Trees on Development sites. DBH was measured with a diameter tape.

Tree Protection Zone (m) (Radius from centre of trunk): The Tree Protection Zone (TPZ) is determined based on 12 times the measured trunk diameter and is in accordance with Australian Standard AS 4970-2009, Protection of Trees on Development Sites.

However, for newly planted or establishing trees, this calculation may not provide sufficient protection. Stephen Frank, Director of Treelogic Pty Ltd, has provided the following statement in reference to newly planted trees in the tree-lined avenue in Yarra Park, East Melbourne:

“...The average Tree Protection Zone of the originally planted trees is 9.9 metres (measured as a radius from the centre of the trunk), whereas the average Tree Protection Zone for the newer plantings is 2.2 metres. This creates an anomaly along the length of an avenue where there is potential to be able to undertake some form of development or maintenance activity within close proximity of some of the trees.

The one feature that can be incorporated into the management of the tree avenue is a uniform allocation of Tree Protection Zones based on the average of the largest trees within the avenue.

By including this land uniformly across the avenue, it is possible to regulate such matters as the construction of buildings and fences, paving, the carrying out of maintenance works and other forms of development which may impact upon the health, appearance or conservation of the trees...

....I recommend that the average mature tree Tree Protection Zone radius of 10 metres (rounded up from 9.9 metres) be allocated for newly planted elm trees and existing younger trees up to 15 years of age within the Queens Walk avenue.”

Consequently, this statement has raised the importance of a “Predicted Tree Protection Zone” for young specimens in avenues that are listed as exceptional.

Predicted Tree Protection Zone (m) (Radius from centre of trunk): This is the expected mature Tree Protection Zone of a newly planted or establishing tree based on the average of the mature trees within the avenue. In this register, the Predicted Tree Protection Zone has only been applied to the avenue of Elms in Yarra Park, East Melbourne. However, it may be of relevance to future nominated trees in exceptional avenues.

Diameter at above Root Flare (cm): The basal dimension is the trunk diameter measured at the base of the trunk or main stem(s) immediately above the root buttress. Used to ascertain the Structural Root Zone, this measurement is for the calculation of the Structural Root Zone according to Australian Standard AS 4970-2009, Protection of Trees on Development Sites.



The above images indicate where Treelogic Pty Ltd took the basal measurement.

Structural Root Zone (m) (Radius from centre of trunk): The Structural Root Zone (SRZ) is determined based on the measurement of the trunk above the root flare and is in accordance with Australian Standard AS 4970-2009, Protection of Trees on Development Sites according to the equation:

Structural Root Zone (R_{SRZ}) = $(D \times 50)^{0.42} \times 0.64$,
where D = Diameter at above Root Flare

Height (m): The height of the tree in whole metres as measured from ground level by the Arborist on the day of assessment.

Average Width (m): The estimated average width of the canopy from ground level as measured by the Arborist on the day of assessment.

Approximate Age: This was assessed by the Arborist on the day of inspection. The decision has been informed by any relevant information about the trees age.

Easting/Northing: Spatial reference from Geocentric Datum of Australia 1994, Zone 54.

Statement of Significance: Detailed outline of criteria that the trees within the record fulfil, as well as any descriptive information that outlines reasons for the trees exceptionality, this was informed by the panel of experts engaged for the Exceptional Tree Register expert panel assessment.



Tree ID: 86

English Elm

Ulmus procera

University of Melbourne,
156-290 Grattan Street,
Parkville VIC 3010

5. Frequently Asked Questions

What is the Exceptional Tree Register?

The City of Melbourne's Exceptional Tree Register offers the opportunity to recognise, celebrate and protect the exceptional trees in our city that exist on land not owned or managed by the City of Melbourne.

The register aims to:

- Recognise and celebrate trees in the City of Melbourne by promoting and raising awareness of existing exceptional trees.
- Identify exceptional trees that should be protected through the Melbourne Planning Scheme so that planning permission is required to undertake any action that may harm the tree.
- Encourage shared responsibilities for the retention and care of trees that span property boundaries.
- Promote tree planting on private properties – trees that may become the exceptional trees of the future and increase canopy cover in our city.

Why do we need the Exceptional Tree Register?

The Exceptional Tree Register was adopted by the City of Melbourne to offer some protection to trees in the private realm, as part of a holistic vision for the future urban forest. Council does not have authority over trees on private property, so it was determined the register would provide some level of protection to these trees from potentially harmful activities.

Why would I want to protect a tree on my property?

The register provides an opportunity to promote, share and protect trees that are believed to be exceptional. Owners of properties where exceptional trees are located play an important role caring for a valuable community asset. Not only do urban trees provide substantial environmental and community benefits, they can also help to reduce energy costs, increase property values, and provide aesthetic and amenity value. Additionally, if owners are interested, there may be chances to get involved through open days and feature articles.

What land is included?

Any tree growing on non-City of Melbourne owned or managed land that is under the control of the Melbourne Planning Scheme may be considered for the Exceptional Tree Register, with the exclusion of trees located in the Royal Botanic Gardens Victoria, Melbourne Gardens. Trees growing on land owned or managed by the City of Melbourne are protected by Council's Tree Retention and Removal Policy and therefore excluded from the register.

Why aren't trees on council land included?

Trees that grow on City of Melbourne land are subject to careful regulation, planning, and management as detailed in the Tree Retention and Removal Policy and Local Laws – particularly, the City of Melbourne's Tree Retention and Removal Policy (2012). This register has been created for the

purpose of recognising and protecting those trees that are growing on non-City of Melbourne owned or managed land. The City of Melbourne sought independent expert advice to determine if public trees managed by the City of Melbourne would be offered additional protection if included on the Exceptional Tree Register. This work concluded that there would be limited benefits for including public trees in the Exceptional Tree Register as the City of Melbourne's Tree Retention and Removal Policy (2012) offers significant protection. Consequently, the Exceptional Tree Register does not include City of Melbourne owned or managed trees.

How can I nominate a tree for the Exceptional Tree Register?

Nominations are accepted at any time but will not be reviewed until there is a planned update of the register. This will occur approximately every five years. For more information:

Visit www.melbourne.vic.gov.au/exceptionaltreeregister
or email melbourneurbanforest@melbourne.vic.gov.au

Can I nominate a tree on somebody else's property?

Yes. You do not have to be the owner of the property to nominate a tree. If you do know the property owner, it is recommended to inform the owner that you intend to nominate their tree so that they know why you think the tree is exceptional. The City of Melbourne will alert property owners and residents if a tree on their property has been nominated for the register.

Can I nominate a tree if I don't live in the City of Melbourne?

Yes. Nominations are open to everybody.

What types of trees will be considered?

The City of Melbourne recognises the benefits of a diverse urban forest and therefore the Exceptional Tree Register is open to any tree species, except for those listed as weeds of national significance, or present on the Victorian noxious weeds list.

Who determines if a tree is exceptional?

An expert panel reviews all nominations and Arboricultural reports to determine if each tree can be considered exceptional for the purpose of the register. The expert panel includes knowledgeable professionals in fields relevant to the defined criteria for assessment. The panel also includes a representative from the City of Melbourne, National Trust of Australia (Victoria) and from Heritage Victoria.

Can I make an appeal if my tree has not been determined as exceptional?

The nominator and property owner will be alerted if the tree has not been accepted into the register. Appeals may be made in the form of an additional nomination with supplementary support material for the tree's inclusion in the register.

How are the City of Melbourne's Exceptional Tree Register trees protected?

Exceptional trees are protected via the Melbourne Planning Scheme using an Environmental Significance Overlay. The Environmental Significance Overlay will apply to any property where the exceptional tree grows and to any other properties that are within its Tree Protection Zone (TPZ). As defined in Australian Standard AS 4970-2009, Protection of Trees on Development Sites, the Tree Protection Zone is:

'A specified area above and below ground and at a given distance from the trunk set aside for the protection of a tree's roots and crown to provide for the viability and stability of a tree to be retained where it is potentially subject to damage by development.'

The Environmental Significance Overlay means that any proposed buildings and works within the Tree Protection Zone, or significant pruning, lopping or removal of exceptional trees will require a planning permit. This does not mean that absolutely no works are allowed on or near exceptional trees but rather that the impact that the proposed development will have on the health and values of exceptional trees, must be considered in the planning permit application process. Referrals to Arborists and/or horticulturalists may be required to assess any proposals that may impact on the health or values of exceptional trees. Unauthorised actions may result in fines or prosecution at the Magistrate's court, in accordance with planning legislation.

How long does it take for a nominated tree to go through the listing process?

The multi-stage assessment process and procedure for Planning Scheme Amendments means that listing trees will take some time. The Planning Scheme Amendment follows a multi-staged legislative process, including a statutory public exhibition phase, and usually takes at least a year to be processed. Planning Scheme Amendments (for both interim and permanent planning controls) are authorised and approved by the Minister for Planning. This whole process took three years from commencement to completion as part of Round One nominations.

Can I access the Arborist report?

Reports generated in the assessment phase are made available in the register through our interactive map on our website: www.melbourne.vic.gov.au/exceptionaltreeregister. Hyperlinks to individual tree reports for each exceptional tree can also be found in this *Section 9: Report Index* of this document. Additional information may be provided upon request. Subsequent Arboricultural advice may be provided to owners and will be discussed on a tree by tree basis.

What should be done if a listed Exceptional Tree Register tree seems sick or damaged in some way?

Please contact the City of Melbourne for advice. If a tree is damaged or reaches a state of severe decline it may be considered for removal from the register.

How are trees removed from the register?

The process involves contacting the City of Melbourne Planning Team and applying for the affected trees removal from the landscape and the Exceptional Tree Register. This application must include an assessment from an independent Arborist to be reviewed by the City of Melbourne prior to removal from the landscape.

Will the register be updated?

Melbourne's urban forest is a dynamic system with natural cycles of tree growth, maturation and death, and the City of Melbourne recognises the need for the register to reflect this. Nominations will continue to be accepted at anytime. However, they will only be reviewed and processed for future versions of the register and subsequent planning scheme amendments approximately every five years. Additionally, removal of trees from the register may occur if required following arboricultural assessment and consideration.



Tree ID: 119
Spotted Gum
Corymbia maculata

36 McConnell Street,
KENSINGTON 3031

6. How to use this Register

In this document you will find information about the register, and on all trees that are included in it. Full reports for each exceptional tree in the register is available through our interactive map on our website: www.melbourne.vic.gov.au/exceptionaltreeregister.

A list of properties that fall within Tree Protection Zones (TPZ) of exceptional trees, arranged by precinct, is provided for quick reference (7. Properties within Tree Protection Zones). Please note that properties with the Tree Protection Zone of multiple trees within their boundary are only listed once, with the first of the tree records referenced.

Maps are provided to illustrate location of trees across the municipality and at a finer resolution for the Royal Melbourne Zoo and the University of Melbourne (8. Tree Location Maps).

To assist in navigating the Exceptional Tree Register, an index of all exceptional trees is given (Report Index). Each exceptional tree from both the first and second round of nominations is detailed in this register, with Round One nominations comprising Tree record number 1-137 and Round Two nominations comprising tree record numbers 139-176. Hyperlinks to individual tree reports for each exceptional tree is found in the Report Index.

7. Properties within Tree Protection Zones

This table provides a list of all properties that fall within the Tree Protection Zones (TPZ) of trees on the register, arranged by precinct. While all properties are listed, properties with the Tree Protection Zone of multiple trees within their boundary are only listed once, with the first of the tree records referenced.

As the register will be updated regularly, please double check regulations on your property prior to carrying out any buildings or works within the Tree Protection Zone, or any work on a tree that you believe may be on the Exceptional Tree Register.

Table 3. Properties within Tree Protection Zones (TPZ)

| Precinct | Address | Tree Record Number | Tree Species |
|----------|-----------------------------|--------------------|---|
| Carlton | 125-127 Barkly Street | 3 | <i>Platanus x acerifolia</i> (Plane Tree) |
| Carlton | 131 Barkly Street | 3 | <i>Platanus x acerifolia</i> (Plane Tree) |
| Carlton | 133 Barkly Street | 3 | <i>Platanus x acerifolia</i> (Plane Tree) |
| Carlton | 135 Barkly Street | 3 | <i>Platanus x acerifolia</i> (Plane Tree) |
| Carlton | 137 Barkly Street | 3 | <i>Platanus x acerifolia</i> (Plane Tree) |
| Carlton | 74 Carlton Street | 3 | <i>Platanus x acerifolia</i> (Plane Tree) |
| Carlton | 76 Carlton Street | 3 | <i>Platanus x acerifolia</i> (Plane Tree) |
| Carlton | 78-80 Carlton Street | 3 | <i>Platanus x acerifolia</i> (Plane Tree) |
| Carlton | 82-84 Carlton Street | 3 | <i>Platanus x acerifolia</i> (Plane Tree) |
| Carlton | 9-11 Canning Street | 3 | <i>Platanus x acerifolia</i> (Plane Tree) |
| Carlton | 22-24 MacArthur Place North | 116 | <i>Jacaranda mimosifolia</i> (Jacaranda) |
| Carlton | 26 MacArthur Place North | 116 | <i>Jacaranda mimosifolia</i> (Jacaranda) |
| Carlton | 28-34 MacArthur Place North | 116 | <i>Jacaranda mimosifolia</i> (Jacaranda) |
| Carlton | 9-11 Nicholson Street | 163 | <i>Eucalyptus cladocalyx</i> (Sugar Gum) |
| Carlton | 152 Faraday Street | 169 | <i>Grevillea robusta</i> (Silky Oak) |
| Carlton | 154 Faraday Street | 169 | <i>Grevillea robusta</i> (Silky Oak) |
| Carlton | 156 Faraday Street | 169 | <i>Grevillea robusta</i> (Silky Oak) |
| Carlton | 158 Faraday Street | 169 | <i>Grevillea robusta</i> (Silky Oak) |

| | | | |
|----------------|---|-------|--|
| Carlton | 320-322 Drummond Street | 169 | <i>Grevillea robusta</i> (Silky Oak) |
| Carlton North | Melb. General Cemetery, Lygon Street | 158 | <i>Pinus roxburghii</i> (Chir Pine) |
| East Melbourne | 2-60 Cathedral Place | 4 | <i>Ulmus glabra</i> 'Lutescens' (Golden Elm) |
| East Melbourne | 2 Gisborne Street | 4 | <i>Ulmus glabra</i> 'Lutescens' (Golden Elm) |
| East Melbourne | 84-122 Clarendon Street | 5 | <i>Ulmus procera</i> (English Elm) |
| East Melbourne | 126-158 Clarendon Street | 56 | <i>Fagus sylvatica</i> f. <i>purpurea</i> (European Beech) |
| East Melbourne | 130 Gipps Street | 56 | <i>Fagus sylvatica</i> f. <i>purpurea</i> (European Beech) |
| East Melbourne | 132 Gipps Street | 56 | <i>Fagus sylvatica</i> f. <i>purpurea</i> (European Beech) |
| East Melbourne | 44-60 Albert Street | 135 | <i>Schinus molle</i> (Pepper Tree) |
| East Melbourne | 538 Victoria Parade | 135 | <i>Schinus molle</i> (Pepper Tree) |
| East Melbourne | 540 Victoria Parade | 135 | <i>Schinus molle</i> (Pepper Tree) |
| East Melbourne | 544 Victoria Parade | 135 | <i>Schinus molle</i> (Pepper Tree) |
| East Melbourne | 546-554 Victoria Parade | 135 | <i>Schinus molle</i> (Pepper Tree) |
| East Melbourne | 98-108 Vale Street | 148 | <i>Liquidambar styraciflua</i> (Liquidamber) |
| East Melbourne | 181-189 Gipps Street | 174 | <i>Ulmus procera</i> (English Elm) |
| East Melbourne | 191-195 Gipps Street | 174 | <i>Ulmus procera</i> (English Elm) |
| East Melbourne | 174-188 Hotham Street | 174 | <i>Ulmus procera</i> (English Elm) |
| East Melbourne | Yarra Park Brunton Avenue | 175/1 | <i>Ulmus procera</i> (English Elm) |
| Flemington | 276-318 Epsom Road | 150 | <i>Calodendrum capense</i> (Cape Chestnut) |
| Kensington | 43 Collett Street | 14 | <i>Lagerstroemia indica</i> (Crepe Myrtle) |
| Kensington | 33 McCracken Street | 118 | <i>Schinus molle</i> (Pepper Tree) |
| Kensington | 35 McCracken Street | 118 | <i>Schinus molle</i> (Pepper Tree) |
| Kensington | 39 McCracken Street | 118 | <i>Schinus molle</i> (Pepper Tree) |
| Kensington | 43 McCracken Street | 118 | <i>Schinus molle</i> (Pepper Tree) |
| Kensington | 36-38 McConnell Street | 118 | <i>Schinus molle</i> (Pepper Tree) |
| Kensington | 40-42 McConnell Street | 118 | <i>Schinus molle</i> (Pepper Tree) |

| | | | |
|------------|--|-------|---|
| Kensington | 8-32 Howlett Street | 149 | <i>Eucalyptus camaldulensis</i> (River Red Gum) |
| Kensington | Reserve 113-115 Epsom Road | 149 | <i>Eucalyptus camaldulensis</i> (River Red Gum) |
| Kensington | 97-99 Bayswater Road | 151 | <i>Corymbia maculata</i> (Spotted Gum) |
| Kensington | 14-16 Flockhart Street | 151 | <i>Corymbia maculata</i> (Spotted Gum) |
| Kensington | 18-22 Flockhart Street | 151 | <i>Corymbia maculata</i> (Spotted Gum) |
| Kensington | 94 Bayswater Road | 153 | <i>Corymbia citriodora</i> (Lemon-scented Gum) |
| Melbourne | 607-619 Bourke Street | 1 | <i>Gleditsia sinensis</i> (Chinese Honey Locust) |
| Melbourne | 30-34 Collins Street | 15 | <i>Platanus x acerifolia</i> (Plane Tree) |
| Melbourne | 36-50 Collins Street | 15 | <i>Platanus x acerifolia</i> (Plane Tree) |
| Melbourne | 39-41 Little Collins Street | 16 | <i>Platanus x acerifolia</i> (Plane Tree) |
| Melbourne | 324-326 King Street | 111 | <i>Quercus robur</i> (English Oak) |
| Melbourne | 328-330 King Street | 111 | <i>Quercus robur</i> (English Oak) |
| Melbourne | 497-503 La Trobe Street | 111 | <i>Quercus robur</i> (English Oak) |
| Melbourne | 116-118 Little Lonsdale Street | 114 | <i>Hymenosporum flavum</i> (Native Frangipani) |
| Melbourne | 120-122 Little Lonsdale Street | 114 | <i>Hymenosporum flavum</i> (Native Frangipani) |
| Melbourne | 118-148 Lonsdale Street | 115 | <i>Olea europaea</i> (European Olive) |
| Melbourne | 321-369 St Kilda Road | 123 | <i>Araucaria heterophylla</i> (Norfolk Island Pine) |
| Melbourne | 583-597 St Kilda Road | 124 | <i>Cinnamomum camphora</i> (Camphor Laurel) |
| Melbourne | 567-581 St Kilda Road | 128 | <i>Corymbia citriodora</i> (Lemon-scented Gum) |
| Melbourne | RMIT University, 100-186 La Trobe Street | 170 | <i>Ficus rubiginosa</i> (Port Jackson Fig) |
| Melbourne | 275-285 Exhibition Street | 171 | <i>Erythrina x sykesii</i> (Common Coral Tree) |
| Melbourne | 2 Swanston Street | 173/1 | <i>Platanus x acerifolia</i> (Plane Tree) |

| | | | |
|-----------------|--|-------|--|
| North Melbourne | 113-117 Dryburgh Street | 20 | <i>Corymbia citriodora</i> (Lemon-scented Gum) |
| North Melbourne | 119 Dryburgh Street | 20 | <i>Corymbia citriodora</i> (Lemon-scented Gum) |
| North Melbourne | 121 Dryburgh Street | 20 | <i>Corymbia citriodora</i> (Lemon-scented Gum) |
| North Melbourne | 123 Dryburgh Street | 20 | <i>Corymbia citriodora</i> (Lemon-scented Gum) |
| North Melbourne | Plane Tree Way, 92-132 O'Shanassy Street | 121/1 | <i>Platanus x acerifolia</i> (Plane Tree) |
| North Melbourne | 63-69 O'Shanassy Street | 154 | <i>Quercus coccinea</i> (Scarlet Oak) |
| North Melbourne | 55-61 O'Shanassy Street | 154 | <i>Quercus coccinea</i> (Scarlet Oak) |
| North Melbourne | 71-77 O'Shanassy Street | 156/1 | <i>Liquidambar styraciflua</i> (Liquidamber) |
| Parkville | Melbourne Zoological Gardens Elliott Avenue | 21 | <i>Phoenix canariensis</i> (Canary Island Date Palm) |
| Parkville | Royal Park Flemington Road | 37 | <i>Eucalyptus camaldulensis</i> (River Red Gum) |
| Parkville | Bio21 Institute 30-36 Flemington Road | 55 | <i>Ulmus procera</i> (English Elm) |
| Parkville | University of Melbourne 156-290 Grattan Street | 58 | <i>Salix babylonica</i> (Weeping Willow) |
| Parkville | 136-138 Gatehouse Street | 159 | <i>Corymbia citriodora</i> (Lemon-scented Gum) |
| Parkville | 140-142 Gatehouse Street | 159 | <i>Corymbia citriodora</i> (Lemon-scented Gum) |
| Parkville | 144 Gatehouse Street | 159 | <i>Corymbia citriodora</i> (Lemon-scented Gum) |
| Parkville | Trinity College, 65 College Crescent | 92 | <i>Eucalyptus camaldulensis</i> (River Red Gum) |
| Parkville | Ormond College, 29-55 College Crescent | 160 | <i>Eucalyptus camaldulensis</i> (River Red Gum) |
| Parkville | University High School, 77 Story Street | 172 | <i>Corymbia citriodora</i> (Lemon-scented Gum) |
| South Yarra | 205-207 Domain Road | 18 | <i>Ulmus procera</i> (English Elm) |

| | | | |
|-------------|-------------------------|-----|--|
| South Yarra | 209-211 Domain Road | 18 | <i>Ulmus procera</i> (English Elm) |
| South Yarra | 112-116 Leopold Street | 18 | <i>Ulmus procera</i> (English Elm) |
| South Yarra | 118-124 Leopold Street | 18 | <i>Ulmus procera</i> (English Elm) |
| South Yarra | 254-260 Domain Road | 168 | <i>Schinus molle</i> (Pepper Tree) |
| South Yarra | 99 Leopold Street | 112 | <i>Eucalyptus saligna</i> (Sydney Blue Gum) |
| South Yarra | 101 Leopold Street | 112 | <i>Eucalyptus saligna</i> (Sydney Blue Gum) |
| South Yarra | 103 Leopold Street | 112 | <i>Eucalyptus saligna</i> (Sydney Blue Gum) |
| South Yarra | 105 Leopold Street | 112 | <i>Eucalyptus saligna</i> (Sydney Blue Gum) |
| South Yarra | 92 Park Street | 112 | <i>Eucalyptus saligna</i> (Sydney Blue Gum) |
| South Yarra | 94-96 Park Street | 112 | <i>Eucalyptus saligna</i> (Sydney Blue Gum) |
| South Yarra | 57-59 Leopold Street | 113 | <i>Ailanthus altissima</i> (Tree of Heaven) |
| South Yarra | 61-63 Leopold Street | 113 | <i>Ailanthus altissima</i> (Tree of Heaven) |
| South Yarra | 65 Leopold Street | 113 | <i>Ailanthus altissima</i> (Tree of Heaven) |
| South Yarra | 62 Park Street | 113 | <i>Ailanthus altissima</i> (Tree of Heaven) |
| South Yarra | 64 Park Street | 113 | <i>Ailanthus altissima</i> (Tree of Heaven) |
| South Yarra | 31-33 Marne Street | 117 | <i>Liquidambar styraciflua</i> (Liquidamber) |
| South Yarra | 35-37 Marne Street | 117 | <i>Liquidambar styraciflua</i> (Liquidamber) |
| South Yarra | 9-11 Mona Place | 120 | <i>Liquidambar styraciflua</i> (Liquidamber) |
| South Yarra | 13-15 Mona Place | 120 | <i>Liquidambar styraciflua</i> (Liquidamber) |
| South Yarra | 64-76 Pasley Street | 122 | <i>Jacaranda mimosifolia</i> (Jacaranda) |
| South Yarra | 78-82 Pasley Street | 122 | <i>Jacaranda mimosifolia</i> (Jacaranda) |
| South Yarra | 106 Millswyn Street | 130 | <i>Schinus molle</i> (Pepper Tree) |
| South Yarra | 108 Millswyn Street | 130 | <i>Schinus molle</i> (Pepper Tree) |
| South Yarra | 112-118 Millswyn Street | 130 | <i>Schinus molle</i> (Pepper Tree) |
| South Yarra | 20-36 St Martins Place | 130 | <i>Schinus molle</i> (Pepper Tree) |
| South Yarra | 120W-126W Toorak Road | 131 | <i>Phoenix canariensis</i> (Canary Island Date Palm) |
| South Yarra | 113-117 Walsh Street | 136 | <i>Quercus palustris</i> (Pin Oak) |
| South Yarra | 119-123 Walsh Street | 136 | <i>Quercus palustris</i> (Pin Oak) |

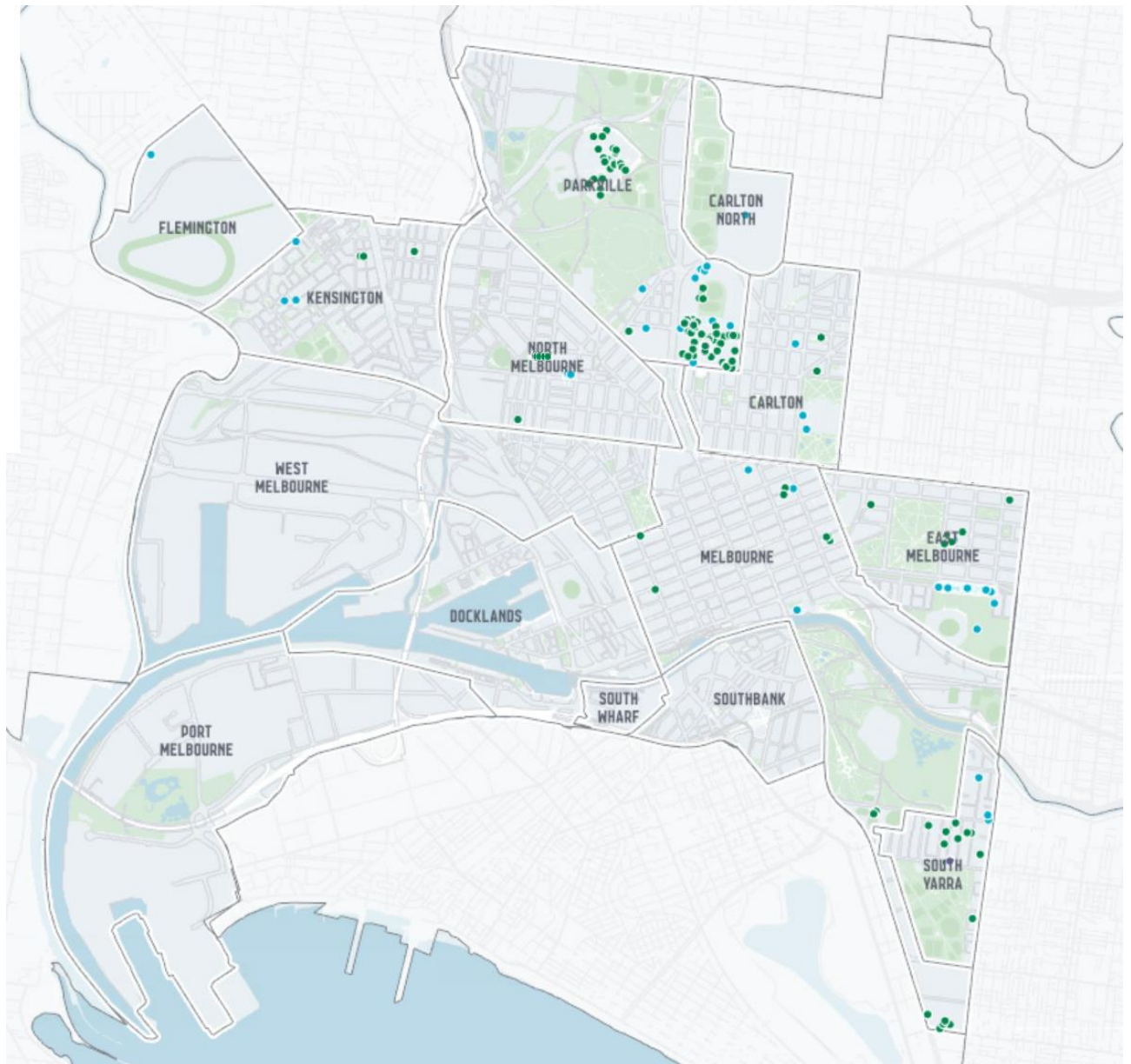
| | | | |
|-------------|------------------------|-----|--|
| South Yarra | 44-48 Marne Street | 137 | <i>Erythrina x sykesii</i> (Coral Tree) |
| South Yarra | 50-56 Marne Street | 137 | <i>Erythrina x sykesii</i> (Coral Tree) |
| South Yarra | 62-108 Anderson Street | 147 | <i>Eucalyptus cinerea</i> (Mealy Stringybark/ Argyle Apple) |
| South Yarra | 289-291 Walsh Street | 147 | <i>Eucalyptus cinerea</i> (Mealy Stringybark/ Argyle Apple) |
| South Yarra | 254-260 Domain Road | 167 | <i>Lagerstroemia indica</i> (Crepe Myrtle) |
| South Yarra | 252 Domain Road | 168 | <i>Schinus molle</i> (Pepper Tree) |

8. Tree location maps

All Exceptional Tree Register tree location overview map

This map provides an overview of all exceptional trees on the register across the municipality. Green dots represent trees nominated in Round One and blue dots represent trees nominated in Round Two.

Figure 1. Overview Map of all Exceptional Tree Register Tree Locations

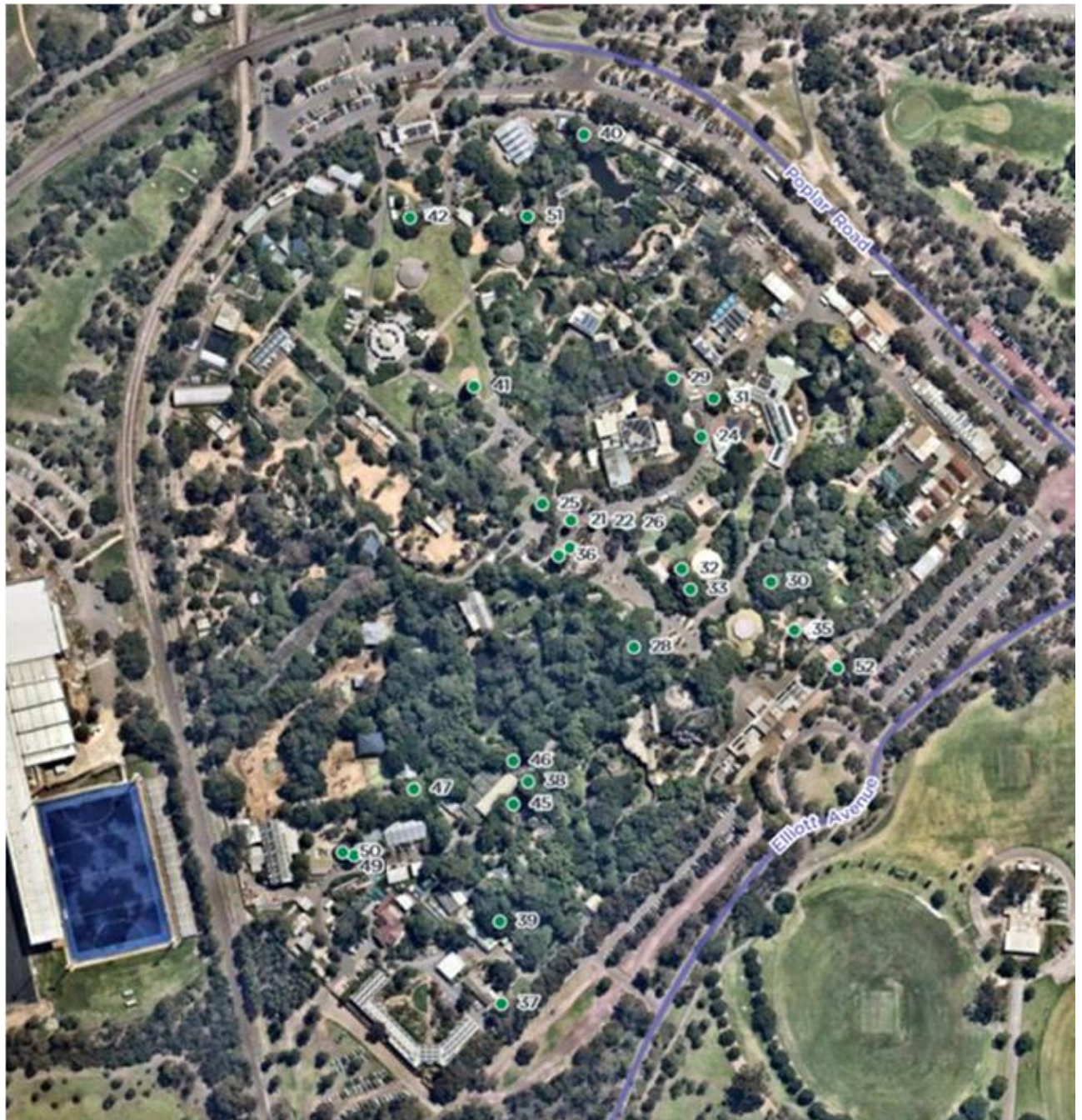


Melbourne Zoo map with Exceptional Tree Register tree locations

Elliot Avenue, Parkville Vic 3010

This map provides an overview of Melbourne Zoo trees on the register, with record numbers given.

Figure 2. Overview Map of Melbourne Zoo Exceptional Tree Register Tree Locations



Legend

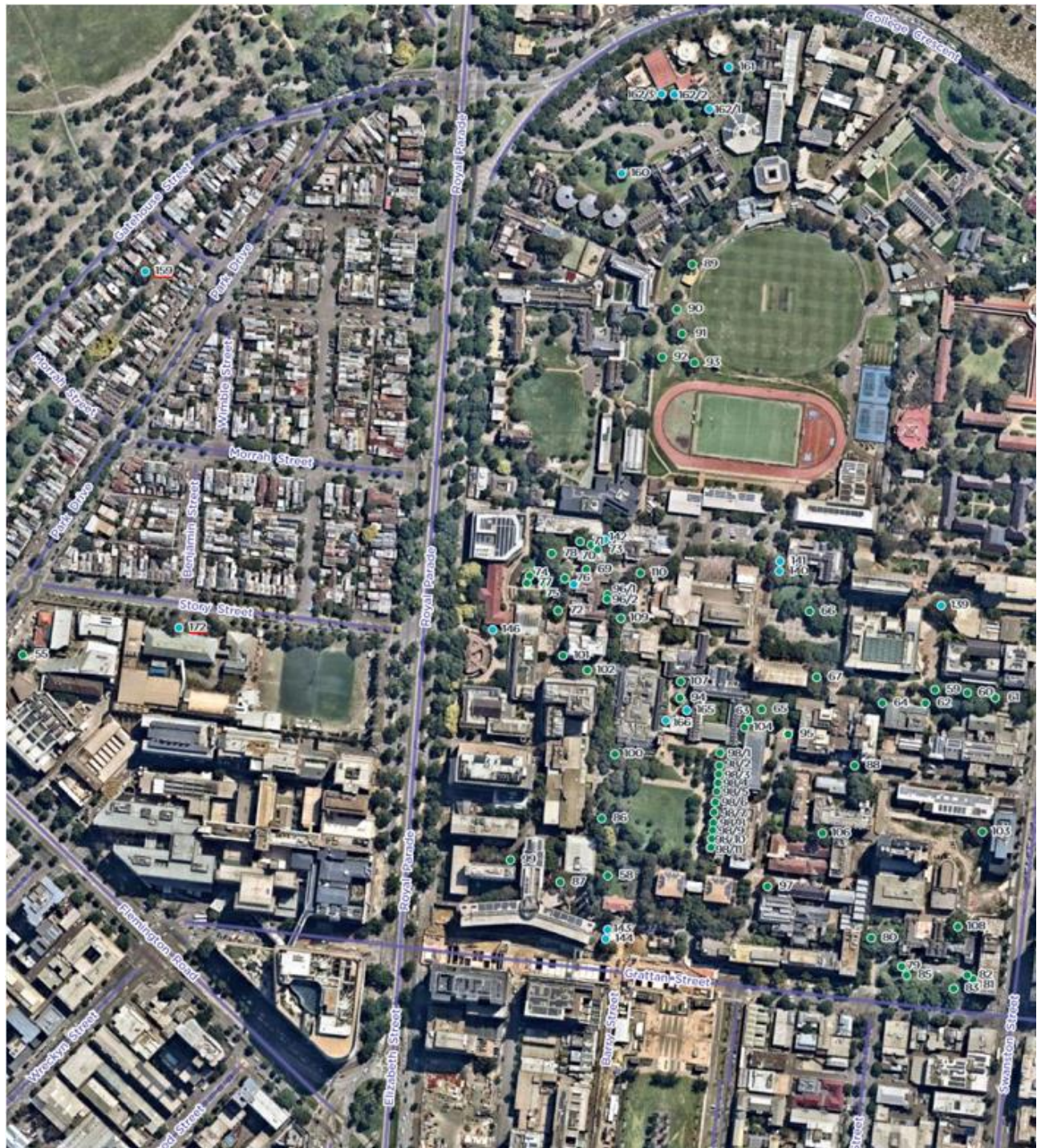
- Round One Exceptional Tree

University of Melbourne map with Exceptional Tree Register tree locations

156-290 Grattan Street, Parkville Vic 3010

30 Flemington Road, Parkville Vic 3010

This map provides an overview of exceptional trees located at the University of Melbourne, with record numbers given.



Legend

- Round One Exceptional Tree
- Round Two Exceptional Tree

9. Report Index

Each exceptional tree from both the first and second round of nominations is detailed in this register, with Round One nominations comprising Tree record number 1-137 and Round Two nominations comprising tree record numbers 139-176. Hyperlinks to individual tree reports for each exceptional tree is found in this section.

Table 4. Complete list of trees on the Exceptional Tree Register.

| Property Address | Tree Name | Tree Record Number |
|-------------------------------------|--|--------------------|
| 607 Bourke Street MELBOURNE | <i>Gleditsia sinensis</i> (Chinese Honey Locust) | 1 |
| 78 Carlton Street CARLTON | <i>Platanus x acerifolia</i> (Plane Tree) | 3 |
| 2 Cathedral Place EAST MELBOURNE | <i>Ulmus glabra</i> 'Lutescens' (Golden Elm) | 4 |
| 84 Clarendon Street EAST MELBOURNE | <i>Ulmus procera</i> (English Elm) | 5 |
| 84 Clarendon Street EAST MELBOURNE | <i>Ficus rubiginosa</i> (Port Jackson Fig) | 6 |
| 84 Clarendon Street EAST MELBOURNE | <i>Eucalyptus camaldulensis</i> (River Red Gum) | 9 |
| 84 Clarendon Street EAST MELBOURNE | <i>Ulmus procera</i> (English Elm) | 10 |
| 84 Clarendon Street EAST MELBOURNE | <i>Ulmus x hollandica</i> (Dutch Elm) | 11 |
| 84 Clarendon Street EAST MELBOURNE | <i>Ulmus x hollandica</i> (Dutch Elm) | 12 |
| 84 Clarendon Street EAST MELBOURNE | <i>Cupressus macrocarpa</i> (Monterey Cypress) | 13 |
| 43 Collett Street KENSINGTON | <i>Lagerstroemia indica</i> (Crepe Myrtle) | 14 |
| 36 Collins Street MELBOURNE | <i>Platanus x acerifolia</i> (Plane Tree) | 15 |
| 36 Collins Street MELBOURNE | <i>Platanus x acerifolia</i> (Plane Tree) | 16 |
| 36 Collins Street MELBOURNE | <i>Platanus x acerifolia</i> (Plane Tree) | 17 |
| 209 Domain Road SOUTH YARRA | <i>Ulmus procera</i> (English Elm) | 18 |
| 119 Dryburgh Street NORTH MELBOURNE | <i>Corymbia citriodora</i> (Lemon-scented Gum) | 20 |
| Elliott Avenue PARKVILLE | <i>Phoenix canariensis</i> (Canary Island Date Palm) | 21 |
| Elliott Avenue PARKVILLE | <i>Phoenix canariensis</i> (Canary Island Date Palm) | 22 |

| | | |
|---------------------------------|--|----|
| Elliott Avenue PARKVILLE | <i>Phoenix canariensis</i> (Canary Island Date Palm) | 23 |
| Elliott Avenue PARKVILLE | <i>Brachychiton acerifolius</i> (Flame Tree) | 24 |
| Elliott Avenue PARKVILLE | <i>Schinus molle</i> (Pepper Tree) | 25 |
| Elliott Avenue PARKVILLE | <i>Eucalyptus camaldulensis</i> (River Red Gum) | 26 |
| Elliott Avenue PARKVILLE | <i>Populus deltoides</i> (Cotton Wood) | 28 |
| Elliott Avenue PARKVILLE | <i>Pinus canariensis</i> (Canary Island Pine) | 29 |
| Elliott Avenue PARKVILLE | <i>Ficus macrophylla</i> (Moreton Bay Fig) | 30 |
| Elliott Avenue PARKVILLE | <i>Schinus molle</i> (Pepper Tree) | 31 |
| Elliott Avenue PARKVILLE | <i>Pinus canariensis</i> (Canary Island Pine) | 32 |
| Elliott Avenue PARKVILLE | <i>Ulmus x hollandica</i> 'Vegeta' (Huntingdon Elm) | 33 |
| Elliott Avenue PARKVILLE | <i>Brachychiton acerifolius</i> (Flame Tree) | 35 |
| Elliott Avenue PARKVILLE | <i>Brachychiton acerifolius</i> (Flame Tree) | 36 |
| Elliott Avenue PARKVILLE | <i>Eucalyptus camaldulensis</i> (River Red Gum) | 37 |
| Elliott Avenue PARKVILLE | <i>Quercus palustris</i> (Pin Oak) | 38 |
| Elliott Avenue PARKVILLE | <i>Ficus macrophylla</i> (Moreton Bay Fig) | 39 |
| Elliott Avenue PARKVILLE | <i>Eucalyptus camaldulensis</i> (River Red Gum) | 40 |
| Elliott Avenue PARKVILLE | <i>Sequoia sempervirens</i> (Coast Redwood) | 41 |
| Elliott Avenue PARKVILLE | <i>Quercus nigra</i> (Water Oak) | 42 |
| Elliott Avenue PARKVILLE | <i>Quercus palustris</i> (Pin Oak) | 45 |
| Elliott Avenue PARKVILLE | <i>Schinus molle</i> (Pepper Tree) | 46 |
| Elliott Avenue PARKVILLE | <i>Ficus rubiginosa</i> (Port Jackson Fig) | 47 |
| Elliott Avenue PARKVILLE | <i>Toona ciliata</i> (Australian Red Cedar) | 49 |
| Elliott Avenue PARKVILLE | <i>Toona ciliata</i> (Australian Red Cedar) | 50 |
| Elliott Avenue PARKVILLE | <i>Sequoia sempervirens</i> (Coast Redwood) | 51 |
| Elliott Avenue PARKVILLE | <i>Eucalyptus camaldulensis</i> (River Red Gum) | 52 |
| 30 Flemington Road PARKVILLE | <i>Ulmus x hollandica</i> (Dutch Elm) | 55 |
| 132 Gipps Street EAST MELBOURNE | <i>Fagus sylvatica</i> f. <i>purpurea</i> (European Beech) | 56 |

| | | |
|------------------------------|--|----|
| 156 Grattan Street PARKVILLE | <i>Salix babylonica</i> (Weeping Willow) | 58 |
| 156 Grattan Street PARKVILLE | <i>Ulmus procera</i> (English Elm) | 59 |
| 156 Grattan Street PARKVILLE | <i>Ulmus procera</i> (English Elm) | 60 |
| 156 Grattan Street PARKVILLE | <i>Ulmus procera</i> (English Elm) | 61 |
| 156 Grattan Street PARKVILLE | <i>Ginkgo biloba</i> (Maiden Hair Tree) | 62 |
| 156 Grattan Street PARKVILLE | <i>Magnolia grandiflora</i> (Bull Bay) | 63 |
| 156 Grattan Street PARKVILLE | <i>Fagus sylvatica</i> f. <i>purpurea</i> (Purple Beech) | 64 |
| 156 Grattan Street PARKVILLE | <i>Cedrus deodara</i> (Deodar Cedar) | 65 |
| 156 Grattan Street PARKVILLE | <i>Ulmus</i> x <i>hollandica</i> 'Vegeta' (Huntingdon Elm) | 66 |
| 156 Grattan Street PARKVILLE | <i>Corymbia maculata</i> (Spotted Gum) | 67 |
| 156 Grattan Street PARKVILLE | <i>Taxodium distichum</i> (Dawn Redwood) | 69 |
| 156 Grattan Street PARKVILLE | <i>Grevillea robusta</i> (Silky Oak) | 70 |
| 156 Grattan Street PARKVILLE | <i>Ficus platypoda</i> (Rock Fig) | 71 |
| 156 Grattan Street PARKVILLE | <i>Maclura pomifera</i> (Osage Orange) | 72 |
| 156 Grattan Street PARKVILLE | <i>Brachychiton discolor</i> (White Kurrajong) | 73 |
| 156 Grattan Street PARKVILLE | <i>Jubaea chilensis</i> (Chilean Wine Palm) | 74 |
| 156 Grattan Street PARKVILLE | <i>Catalpa bignonioides</i> (Indian Bean Tree) | 75 |
| 156 Grattan Street PARKVILLE | <i>Taxodium mucronatum</i> (Montezuma Cypress) | 76 |
| 156 Grattan Street PARKVILLE | <i>Phoenix canariensis</i> (Canary Island Date Palm) | 77 |
| 156 Grattan Street PARKVILLE | <i>Eucalyptus saligna</i> (Sydney Blue Gum) | 78 |
| 156 Grattan Street PARKVILLE | <i>Magnolia grandiflora</i> (Bull Bay) | 79 |
| 156 Grattan Street PARKVILLE | <i>Schinus molle</i> (Pepper Tree) | 80 |
| 156 Grattan Street PARKVILLE | <i>Pinus canariensis</i> (Canary Island Pine) | 81 |
| 156 Grattan Street PARKVILLE | <i>Phoenix canariensis</i> (Canary Island Date Palm) | 82 |
| 156 Grattan Street PARKVILLE | <i>Cedrus deodara</i> (Deodar Cedar) | 83 |
| 156 Grattan Street PARKVILLE | <i>Phoenix canariensis</i> (Canary Island Date Palm) | 85 |

| | | |
|------------------------------|--|-------|
| 156 Grattan Street PARKVILLE | <i>Ulmus procera</i> (English Elm) | 86 |
| 156 Grattan Street PARKVILLE | <i>Eucalyptus globulus</i> subsp. <i>bicostata</i> (Victoria Blue Gum) | 87 |
| 156 Grattan Street PARKVILLE | <i>Araucaria bidwillii</i> (Bunya Bunya Pine) | 88 |
| 156 Grattan Street PARKVILLE | <i>Eucalyptus cladocalyx</i> (Sugar Gum) | 89 |
| 156 Grattan Street PARKVILLE | <i>Eucalyptus camaldulensis</i> (River Red Gum) | 90 |
| 156 Grattan Street PARKVILLE | <i>Eucalyptus camaldulensis</i> (River Red Gum) | 91 |
| 156 Grattan Street PARKVILLE | <i>Eucalyptus camaldulensis</i> (River Red Gum) | 92 |
| 156 Grattan Street PARKVILLE | <i>Eucalyptus camaldulensis</i> (River Red Gum) | 93 |
| 156 Grattan Street PARKVILLE | <i>Cussonia spicata</i> (Cabbage Tree) | 94 |
| 156 Grattan Street PARKVILLE | <i>Liriodendron tulipifera</i> (Tulip Tree) | 95 |
| 156 Grattan Street PARKVILLE | <i>Metasequoia glyptostroboides</i> (Dawn Redwood) | 96/1 |
| 156 Grattan Street PARKVILLE | <i>Metasequoia glyptostroboides</i> (Dawn Redwood) | 96/2 |
| 156 Grattan Street PARKVILLE | <i>Corymbia citriodora</i> (Lemon-scented Gum) | 97 |
| 156 Grattan Street PARKVILLE | <i>Platanus x acerifolia</i> (Plane Tree) | 98/1 |
| 156 Grattan Street PARKVILLE | <i>Platanus x acerifolia</i> (Plane Tree) | 98/2 |
| 156 Grattan Street PARKVILLE | <i>Platanus x acerifolia</i> (Plane Tree) | 98/3 |
| 156 Grattan Street PARKVILLE | <i>Platanus x acerifolia</i> (Plane Tree) | 98/4 |
| 156 Grattan Street PARKVILLE | <i>Platanus x acerifolia</i> (Plane Tree) | 98/5 |
| 156 Grattan Street PARKVILLE | <i>Platanus x acerifolia</i> (Plane Tree) | 98/6 |
| 156 Grattan Street PARKVILLE | <i>Platanus x acerifolia</i> (Plane Tree) | 98/7 |
| 156 Grattan Street PARKVILLE | <i>Platanus x acerifolia</i> (Plane Tree) | 98/8 |
| 156 Grattan Street PARKVILLE | <i>Platanus x acerifolia</i> (Plane Tree) | 98/9 |
| 156 Grattan Street PARKVILLE | <i>Platanus x acerifolia</i> (Plane Tree) | 98/10 |
| 156 Grattan Street PARKVILLE | <i>Platanus x acerifolia</i> (Plane Tree) | 98/11 |
| 156 Grattan Street PARKVILLE | <i>Corymbia citriodora</i> (Lemon-scented Gum) | 99 |
| 156 Grattan Street PARKVILLE | <i>Ulmus glabra</i> 'Pendula' (Weeping Elm) | 100 |
| 156 Grattan Street PARKVILLE | <i>Cassine crocea</i> (African Holly) | 101 |

| | | |
|---|--|-------|
| 156 Grattan Street PARKVILLE | <i>Phytolacca dioica</i> (Ombu) | 102 |
| 156 Grattan Street PARKVILLE | <i>Corymbia citriodora</i> (Lemon-scented Gum) | 103 |
| 156 Grattan Street PARKVILLE | <i>Picconia excelsa</i> (Canary Island Laurel) | 104 |
| 156 Grattan Street PARKVILLE | <i>Corymbia maculata</i> (Spotted Gum) | 106 |
| 156 Grattan Street PARKVILLE | <i>Malus x purpurea</i> (Crab Apple) | 107 |
| 156 Grattan Street PARKVILLE | <i>Platanus x acerifolia</i> (Plane Tree) | 108 |
| 156 Grattan Street PARKVILLE | <i>Ulmus x hollandica</i> (Dutch Elm) | 109 |
| 156 Grattan Street PARKVILLE | <i>Eucalyptus cladocalyx</i> (Sugar Gum) | 110 |
| 328 King Street MELBOURNE | <i>Quercus robur</i> (English Oak) | 111 |
| 101 Leopold Street SOUTH YARRA | <i>Eucalyptus saligna</i> (Sydney Blue Gum) | 112 |
| 116 Little Lonsdale Street MELBOURNE | <i>Hymenosporum flavum</i> (Native Frangipani) | 114 |
| 118 Lonsdale Street MELBOURNE | <i>Olea europaea</i> (European Olive) | 115 |
| 26 MacArthur Place North CARLTON | <i>Jacaranda mimosifolia</i> (Jacaranda) | 116 |
| 35 Marne Street SOUTH YARRA | <i>Liquidambar styraciflua</i> (Liquidambar) | 117 |
| 36 McConnell Street KENSINGTON | <i>Schinus molle</i> (Pepper Tree) | 118 |
| 36 McConnell Street KENSINGTON | <i>Corymbia maculata</i> (Spotted Gum) | 119 |
| 13 Mona Place SOUTH YARRA | <i>Liquidambar styraciflua</i> (Liquidambar) | 120 |
| Plane Tree Way, 92 O'Shanassy Street NORTH MELBOURNE | <i>Platanus x acerifolia</i> (Plane Tree) | 121/1 |
| Plane Tree Way, 92 O'Shanassy Street NORTH MELBOURNE | <i>Platanus x acerifolia</i> (Plane Tree) | 121/2 |
| Plane Tree Way, 92 O'Shanassy Street NORTH MELBOURNE | <i>Platanus x acerifolia</i> (Plane Tree) | 121/3 |
| Plane Tree Way, 92 O'Shanassy Street NORTH MELBOURNE | <i>Platanus x acerifolia</i> (Plane Tree) | 121/4 |
| Plane Tree Way, 92 O'Shanassy Street NORTH MELBOURNE | <i>Platanus x acerifolia</i> (Plane Tree) | 121/5 |
| Plane Tree Way, 92 O'Shanassy Street NORTH MELBOURNE | <i>Platanus x acerifolia</i> (Plane Tree) | 121/6 |
| Plane Tree Way, 92 O'Shanassy Street NORTH MELBOURNE | <i>Platanus x acerifolia</i> (Plane Tree) | 121/7 |

| | | |
|---|---|--------|
| Plane Tree Way, 92 O'Shanassy Street NORTH MELBOURNE | <i>Platanus x acerifolia</i> (Plane Tree) | 121/8 |
| Plane Tree Way, 92 O'Shanassy Street NORTH MELBOURNE | <i>Platanus x acerifolia</i> (Plane Tree) | 121/9 |
| Plane Tree Way, 92 O'Shanassy Street NORTH MELBOURNE | <i>Platanus x acerifolia</i> (Plane Tree) | 121/10 |
| Plane Tree Way, 92 O'Shanassy Street NORTH MELBOURNE | <i>Platanus x acerifolia</i> (Plane Tree) | 121/11 |
| Plane Tree Way, 92 O'Shanassy Street NORTH MELBOURNE | <i>Platanus x acerifolia</i> (Plane Tree) | 121/12 |
| Plane Tree Way, 92 O'Shanassy Street NORTH MELBOURNE | <i>Platanus x acerifolia</i> (Plane Tree) | 121/13 |
| Plane Tree Way, 92 O'Shanassy Street NORTH MELBOURNE | <i>Platanus x acerifolia</i> (Plane Tree) | 121/14 |
| Plane Tree Way, 92 O'Shanassy Street NORTH MELBOURNE | <i>Platanus x acerifolia</i> (Plane Tree) | 121/15 |
| Plane Tree Way, 92 O'Shanassy Street NORTH MELBOURNE | <i>Platanus x acerifolia</i> (Plane Tree) | 121/16 |
| Plane Tree Way, 92 O'Shanassy Street NORTH MELBOURNE | <i>Platanus x acerifolia</i> (Plane Tree) | 121/17 |
| Plane Tree Way, 92 O'Shanassy Street NORTH MELBOURNE | <i>Platanus x acerifolia</i> (Plane Tree) | 121/18 |
| Plane Tree Way, 92 O'Shanassy Street NORTH MELBOURNE | <i>Platanus x acerifolia</i> (Plane Tree) | 121/19 |
| Plane Tree Way, 92 O'Shanassy Street NORTH MELBOURNE | <i>Platanus x acerifolia</i> (Plane Tree) | 121/20 |
| 64 Pasley Street SOUTH YARRA | <i>Jacaranda mimosifolia</i> (Jacaranda) | 122 |
| 321 St Kilda Road MELBOURNE | <i>Araucaria heterophylla</i> (Norfolk Island Pine) | 123 |
| 583 St Kilda Road MELBOURNE | <i>Cinnamomum camphora</i> (Camphor Laurel) | 124 |
| 583 St Kilda Road MELBOURNE | <i>Ulmus minor</i> 'Variegata' (Variegated Elm) | 125 |
| 583 St Kilda Road MELBOURNE | <i>Lophostemon confertus</i> (Queensland Brush Box) | 126 |
| 583 St Kilda Road MELBOURNE | <i>Ceratonia siliqua</i> (Carob) | 127 |
| 583 St Kilda Road MELBOURNE | <i>Corymbia citriodora</i> (Lemon-scented Gum) | 128 |
| 321 St Kilda Road MELBOURNE | <i>Ulmus procera</i> (English Elm) | 129 |

| | | |
|--------------------------------------|---|-------|
| 20 St Martins Place SOUTH YARRA | <i>Schinus molle</i> (Pepper Tree) | 130 |
| 120W Toorak Road SOUTH YARRA | <i>Phoenix canariensis</i> (Canary Island Date Palm) | 131 |
| 120W Toorak Road SOUTH YARRA | <i>Phoenix canariensis</i> (Canary Island Date Palm) | 132 |
| 544 Victoria Parade EAST MELBOURNE | <i>Schinus molle</i> (Pepper Tree) | 135 |
| 113 Walsh Street SOUTH YARRA | <i>Quercus palustris</i> (Pin Oak) | 136 |
| 113 Walsh Street SOUTH YARRA | <i>Erythrina x sykesii</i> (Coral Tree) | 137 |
| 156 Grattan Street PARKVILLE | <i>Eucalyptus saligna</i> (Sydney Blue Gum) | 139 |
| 156 Grattan Street PARKVILLE | <i>Corymbia citriodora</i> (Lemon-scented Gum) | 140 |
| 156 Grattan Street PARKVILLE | <i>Corymbia citriodora</i> (Lemon-scented Gum) | 141 |
| 156 Grattan Street PARKVILLE | <i>Cupressus torulosa</i> (Bhutan Cypress) | 142 |
| 156 Grattan Street PARKVILLE | <i>Quercus suber</i> (Cork Oak) | 143 |
| 156 Grattan Street PARKVILLE | <i>Sequoia sempervirens</i> (Coast Redwood) | 144 |
| 156 Grattan Street PARKVILLE | <i>Prumnopitys ladei</i> (Mount Spurgeon Black Pine) | 145 |
| 156 Grattan Street PARKVILLE | <i>Olea europaea</i> subsp. <i>africana</i> (African Olive) | 146 |
| 62 Anderson Street SOUTH YARRA | <i>Eucalyptus cinerea</i> (Mealy Stringybark/Argyle Apple) | 147 |
| 98 Vale Street EAST MELBOURNE | <i>Liquidambar styraciflua</i> (Liquidamber) | 148 |
| 8 Howlett Street KENSINGTON | <i>Eucalyptus camaldulensis</i> (River Red Gum) | 149 |
| 276 Epsom Road FLEMINGTON | <i>Calodendrum capense</i> (Cape Chestnut) | 150 |
| 14 Flockhart Street KENSINGTON | <i>Corymbia maculata</i> (Spotted Gum) | 151 |
| 94 Bayswater Road KENSINGTON | <i>Corymbia citriodora</i> (Lemon-scented Gum) | 153 |
| 63 O'Shanassy Street NORTH MELBOURNE | <i>Quercus coccinea</i> (Scarlet Oak) | 154 |
| 63 O'Shanassy Street NORTH MELBOURNE | <i>Cedrus deodara</i> (Deodar Cedar) | 155 |
| 63 O'Shanassy Street NORTH MELBOURNE | <i>Liquidambar styraciflua</i> (Liquidamber) | 156/1 |
| 63 O'Shanassy Street NORTH MELBOURNE | <i>Liquidambar styraciflua</i> (Liquidamber) | 156/2 |

| | | |
|---|---|-------|
| 63 O'Shanassy Street NORTH MELBOURNE | <i>Liquidambar styraciflua</i> (Liquidamber) | 156/3 |
| 63 O'Shanassy Street NORTH MELBOURNE | <i>Liquidambar styraciflua</i> (Liquidamber) | 156/4 |
| 63 O'Shanassy Street NORTH MELBOURNE | <i>Liquidambar styraciflua</i> (Liquidamber) | 156/5 |
| 63 O'Shanassy Street NORTH MELBOURNE | <i>Corymbia maculata</i> (Spotted Gum) | 157 |
| Lygon Street CARLTON NORTH | <i>Pinus roxburghii</i> (Chir Pine) | 158 |
| 140 Gatehouse Street PARKVILLE | <i>Corymbia citriodora</i> (Lemon-scented Gum) | 159 |
| 29 College Crescent PARKVILLE | <i>Eucalyptus camaldulensis</i> (River Red Gum) | 160 |
| 29 College Crescent PARKVILLE | <i>Corymbia haematoxylon</i> (Lesser Bloodwood) | 161 |
| 29 College Crescent PARKVILLE | <i>Sequoia sempervirens</i> (Coast Redwood) | 162/1 |
| 29 College Crescent PARKVILLE | <i>Sequoia sempervirens</i> (Coast Redwood) | 162/2 |
| 29 College Crescent PARKVILLE | <i>Sequoia sempervirens</i> (Coast Redwood) | 162/3 |
| 9 Nicholson Street CARLTON | <i>Eucalyptus cladocalyx</i> (Sugar Gum) | 163 |
| 9 Nicholson Street CARLTON | <i>Ficus macrophylla</i> (Moreton Bay Fig) | 164 |
| 156 Grattan Street PARKVILLE | <i>Magnolia grandiflora</i> (Bull Bay Magnolia) | 165 |
| 156 Grattan Street PARKVILLE | <i>Castanospermum australe</i> (Black Bean) | 166 |
| 254 Domain Road SOUTH YARRA | <i>Lagerstroemia indica</i> (Crepe Myrtle) | 167 |
| 254 Domain Road SOUTH YARRA | <i>Schinus molle</i> (Pepper Tree) | 168 |
| 154 Faraday Street CARLTON | <i>Grevillea robusta</i> (Silky Oak) | 169 |
| 100 La Trobe Street MELBOURNE | <i>Ficus rubiginosa</i> (Port Jackson Fig) | 170 |
| 275 Exhibition Street MELBOURNE | <i>Erythrina x sykesii</i> (Common Coral Tree) | 171 |
| 77 Story Street PARKVILLE | <i>Corymbia citriodora</i> (Lemon-scented Gum) | 172 |
| 2 Swanston Street MELBOURNE | <i>Platanus x acerifolia</i> (Plane Tree) | 173/1 |
| 2 Swanston Street MELBOURNE | <i>Platanus x acerifolia</i> (Plane Tree) | 173/2 |
| 2 Swanston Street MELBOURNE | <i>Platanus x acerifolia</i> (Plane Tree) | 173/3 |
| 2 Swanston Street MELBOURNE | <i>Platanus x acerifolia</i> (Plane Tree) | 173/4 |
| 174 Hotham Street EAST MELBOURNE | <i>Ulmus procera</i> (English Elm) | 174 |

| | | |
|-------------------------------|--|--------|
| Brunton Avenue EAST MELBOURNE | <i>Ulmus procera</i> (English Elm) | 175/1 |
| Brunton Avenue EAST MELBOURNE | <i>Ulmus procera</i> (English Elm) | 175/2 |
| Brunton Avenue EAST MELBOURNE | <i>Ulmus procera</i> (English Elm) | 175/3 |
| Brunton Avenue EAST MELBOURNE | <i>Ulmus procera</i> (English Elm) | 175/4 |
| Brunton Avenue EAST MELBOURNE | <i>Ulmus procera</i> (English Elm) | 175/5 |
| Brunton Avenue EAST MELBOURNE | <i>Ulmus procera</i> (English Elm) | 175/6 |
| Brunton Avenue EAST MELBOURNE | <i>Ulmus procera</i> (English Elm) | 175/7 |
| Brunton Avenue EAST MELBOURNE | <i>Ulmus procera</i> (English Elm) | 175/8 |
| Brunton Avenue EAST MELBOURNE | <i>Ulmus procera</i> (English Elm) | 175/9 |
| Brunton Avenue EAST MELBOURNE | <i>Ulmus procera</i> (English Elm) | 175/10 |
| Brunton Avenue EAST MELBOURNE | <i>Ulmus procera</i> (English Elm) | 175/11 |
| Brunton Avenue EAST MELBOURNE | <i>Ulmus procera</i> (English Elm) | 175/12 |
| Brunton Avenue EAST MELBOURNE | <i>Ulmus procera</i> (English Elm) | 175/13 |
| Brunton Avenue EAST MELBOURNE | <i>Ulmus procera</i> (English Elm) | 175/14 |
| Brunton Avenue EAST MELBOURNE | <i>Ulmus procera</i> (English Elm) | 175/15 |
| Brunton Avenue EAST MELBOURNE | <i>Ulmus procera</i> (English Elm) | 175/16 |
| Brunton Avenue EAST MELBOURNE | <i>Ulmus procera</i> (English Elm) | 175/17 |
| Brunton Avenue EAST MELBOURNE | <i>Ulmus procera</i> (English Elm) | 175/18 |
| Brunton Avenue EAST MELBOURNE | <i>Ulmus procera</i> (English Elm) | 175/19 |
| Brunton Avenue EAST MELBOURNE | <i>Ulmus procera</i> (English Elm) | 175/20 |
| Brunton Avenue EAST MELBOURNE | <i>Ulmus procera</i> (English Elm) | 175/21 |
| Brunton Avenue EAST MELBOURNE | <i>Ulmus procera</i> (English Elm) | 175/22 |
| Brunton Avenue EAST MELBOURNE | <i>Ulmus procera</i> (English Elm) | 175/23 |
| Brunton Avenue EAST MELBOURNE | <i>Ulmus procera</i> (English Elm) | 175/24 |
| Brunton Avenue EAST MELBOURNE | <i>Ulmus procera</i> (English Elm) | 175/25 |
| Brunton Avenue EAST MELBOURNE | <i>Ulmus procera</i> (English Elm) | 175/26 |
| Brunton Avenue EAST MELBOURNE | <i>Ulmus procera</i> (English Elm) | 175/27 |
| Brunton Avenue EAST MELBOURNE | <i>Ulmus procera</i> (English Elm) | 175/28 |
| Brunton Avenue EAST MELBOURNE | <i>Ulmus procera</i> (English Elm) | 175/29 |

| | | |
|-------------------------------|--|--------|
| Brunton Avenue EAST MELBOURNE | <i>Ulmus procera</i> (English Elm) | 175/30 |
| Brunton Avenue EAST MELBOURNE | <i>Ulmus procera</i> (English Elm) | 175/31 |
| Brunton Avenue EAST MELBOURNE | <i>Ulmus procera</i> (English Elm) | 175/32 |
| Brunton Avenue EAST MELBOURNE | <i>Ulmus procera</i> (English Elm) | 175/33 |
| Brunton Avenue EAST MELBOURNE | <i>Ulmus procera</i> (English Elm) | 175/34 |
| Brunton Avenue EAST MELBOURNE | <i>Ulmus procera</i> (English Elm) | 175/35 |
| Brunton Avenue EAST MELBOURNE | <i>Ulmus procera</i> (English Elm) | 175/36 |
| Brunton Avenue EAST MELBOURNE | <i>Ulmus procera</i> (English Elm) | 175/37 |
| Brunton Avenue EAST MELBOURNE | <i>Ulmus procera</i> (English Elm) | 175/38 |
| Brunton Avenue EAST MELBOURNE | <i>Ulmus procera</i> (English Elm) | 175/39 |
| Brunton Avenue EAST MELBOURNE | <i>Ulmus procera</i> (English Elm) | 175/40 |
| Brunton Avenue EAST MELBOURNE | <i>Ulmus procera</i> (English Elm) | 175/41 |
| Brunton Avenue EAST MELBOURNE | <i>Ulmus procera</i> (English Elm) | 175/42 |
| Brunton Avenue EAST MELBOURNE | <i>Ulmus procera</i> (English Elm) | 175/43 |
| Brunton Avenue EAST MELBOURNE | <i>Ulmus procera</i> (English Elm) | 175/44 |
| Brunton Avenue EAST MELBOURNE | <i>Ulmus procera</i> (English Elm) | 175/45 |
| Brunton Avenue EAST MELBOURNE | <i>Ulmus procera</i> (English Elm) | 175/46 |
| Brunton Avenue EAST MELBOURNE | <i>Ulmus procera</i> (English Elm) | 175/47 |
| Brunton Avenue EAST MELBOURNE | <i>Ulmus procera</i> (English Elm) | 175/48 |
| Brunton Avenue EAST MELBOURNE | <i>Ulmus procera</i> (English Elm) | 175/49 |
| Brunton Avenue EAST MELBOURNE | <i>Ulmus procera</i> (English Elm) | 175/50 |
| Brunton Avenue EAST MELBOURNE | <i>Ulmus procera</i> (English Elm) | 175/51 |
| Brunton Avenue EAST MELBOURNE | <i>Ulmus procera</i> (English Elm) | 175/52 |
| Brunton Avenue EAST MELBOURNE | <i>Ulmus procera</i> (English Elm) | 175/53 |
| Brunton Avenue EAST MELBOURNE | <i>Ulmus procera</i> (English Elm) | 175/54 |
| Brunton Avenue EAST MELBOURNE | <i>Ulmus procera</i> (English Elm) | 175/55 |
| Brunton Avenue EAST MELBOURNE | <i>Ulmus procera</i> (English Elm) | 175/56 |
| Brunton Avenue EAST MELBOURNE | <i>Ulmus procera</i> (English Elm) | 175/57 |
| Brunton Avenue EAST MELBOURNE | <i>Ulmus procera</i> (English Elm) | 175/58 |

| | | |
|-------------------------------|---|--------|
| Brunton Avenue EAST MELBOURNE | <i>Ulmus procera</i> (English Elm) | 175/59 |
| Brunton Avenue EAST MELBOURNE | <i>Ulmus procera</i> (English Elm) | 175/60 |
| Brunton Avenue EAST MELBOURNE | <i>Ulmus procera</i> (English Elm) | 175/61 |
| Brunton Avenue EAST MELBOURNE | <i>Ulmus procera</i> (English Elm) | 175/62 |
| Brunton Avenue EAST MELBOURNE | <i>Ulmus procera</i> (English Elm) | 175/63 |
| Brunton Avenue EAST MELBOURNE | <i>Ulmus procera</i> (English Elm) | 175/64 |
| Brunton Avenue EAST MELBOURNE | <i>Ulmus procera</i> (English Elm) | 175/65 |
| Brunton Avenue EAST MELBOURNE | <i>Ulmus procera</i> (English Elm) | 175/66 |
| Brunton Avenue EAST MELBOURNE | <i>Ulmus procera</i> (English Elm) | 175/67 |
| Brunton Avenue EAST MELBOURNE | <i>Ulmus procera</i> (English Elm) | 175/68 |
| Brunton Avenue EAST MELBOURNE | <i>Ulmus procera</i> (English Elm) | 175/69 |
| Brunton Avenue EAST MELBOURNE | <i>Ulmus procera</i> (English Elm) | 175/70 |
| Brunton Avenue EAST MELBOURNE | <i>Ulmus procera</i> (English Elm) | 175/71 |
| Brunton Avenue EAST MELBOURNE | <i>Ulmus procera</i> (English Elm) | 175/72 |
| Brunton Avenue EAST MELBOURNE | <i>Ulmus procera</i> (English Elm) | 175/73 |
| Brunton Avenue EAST MELBOURNE | <i>Ulmus procera</i> (English Elm) | 175/74 |
| Brunton Avenue EAST MELBOURNE | <i>Eucalyptus camaldulensis</i> (River Red Gum) | 176 |

How to contact us

Online:

melbourne.vic.gov.au

In person:

Melbourne Town Hall - Administration Building
120 Swanston Street, Melbourne
Business hours, Monday to Friday
(Public holidays excluded)

Telephone:

03 9658 9658
Business hours, Monday to Friday
(Public holidays excluded)

Fax:

03 9654 4854

In writing:

City of Melbourne
GPO Box 1603
Melbourne VIC 3001
Australia



Interpreter services

We cater for people of all backgrounds
Please call 03 9280 0726

03 9280 0717 廣東話
03 9280 0719 Bahasa Indonesia
03 9280 0720 Italiano
03 9280 0721 普通話
03 9280 0722 Soomaali
03 9280 0723 Español
03 9280 0725 Việt Ngữ
03 9280 0726 عربي
03 9280 0726 한국어
03 9280 0726 हिंदी
03 9280 0726 All other languages

National Relay Service:

If you are deaf, hearing impaired or speech-impaired,
call us via the National Relay Service: Teletypewriter (TTY)
users phone 1300 555 727 then ask for 03 9658 9658
9am to 5pm, Monday to Friday (Public holidays excluded)

melbourne.vic.gov.au



CITY OF MELBOURNE