

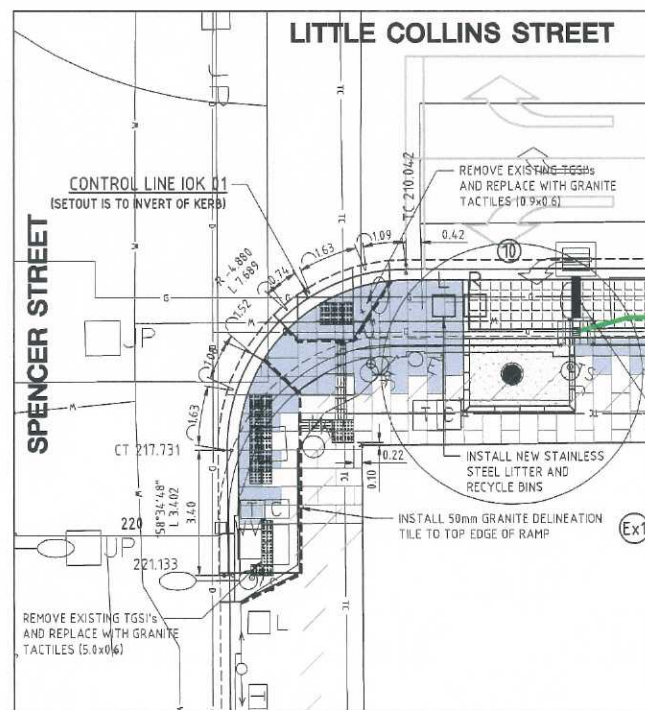
FOR CONTINUATION REFER TO SHEET 03

CONSTRUCTION LEGEND

- EXCAVATE 215mm BELOW DESIGN LEVELS AND CONSTRUCT BLUESTONE PAVEMENT AS PER TYPICAL CROSS SECTION AND DETAILS IN M.C.C. STANDARD DRAWING 1P 50402.
- CONSTRUCT PERMEABLE PAVEMENT/TREE ROOT ZONE WITH BLUESTONE BLOCK PAVERS AS PER DETAILS.
- RECONSTRUCT CBD ASPHALT CROSSING AS PER M.C.C. STANDARD DRAWING 1P50104.
- PROPOSED TREE PLOT WITH STANDARD COM GRANITIC GRAVEL TOPPING. REFER TO M.C.C. STANDARD DRAWING 1P 50401.
- ENLARGE EXISTING TREE PLOT WITHIN BLUESTONE PAVEMENT. INSTALL 150mm WIDE BLUESTONE PLINTH SURROUND AND FLOWSTONE POROUS PAVEMENT (SPRING COLOUR) FLUSH WITH FOOTPATH.
- CONSTRUCT ACCESS RAMP AS PER AS1428.4 - 2002. RAMP GRADE 1 IN 8 MAX. INSTALL 50mm WIDE GRANITE DELINEATION PAVERS TO OUTLINE OF ACCESS RAMP EDGE. REFER TO M.C.C. STANDARD DRAWING 1P 50201.
- INSTALL GRANITE WARNING TGS IN ACCORDANCE WITH AS1428.4-2002 (BLUESTONE PAVEMENT). REFER TO M.C.C. STANDARD DRAWING 1P 50201.
- INSTALL GRANITE DIRECTIONAL TGS IN ACCORDANCE WITH AS1428.4-2002 (BLUESTONE PAVEMENT). REFER TO M.C.C. STANDARD DRAWING 1P 50201.
- CONSTRUCT DRAINAGE PIT. REFER TO M.C.C. STANDARD DRAWINGS 1P 50301 & 1P 50306.
- SUPPLY & INSTALL TRENCH DRAINS (ACO K3-01) WITH CLASS D IRON, HEELGUARD LOCKDOWN PIPES.
- INSTALL EXPANSION JOINT IN BLUESTONE PAVING AS PER DETAIL 2 IN M.C.C. STANDARD DRAWING 1P 50402. MAXIMUM 10m CENTRES.
- SUPPLY & SET NEW 300mm x 300mm BLUESTONE KERB AND 250mm x 100mm GUTTERSTONE CHANNEL. REFER TO M.C.C. STANDARD DRAWINGS.
- SUPPLY & SET NEW STAINLESS STEEL BIKE STAND. REFER TO M.C.C. STANDARD DRAWINGS.
- SUPPLY & SET NEW STAINLESS STEEL SLATTED SEAT. REFER TO M.C.C. STANDARD DRAWINGS.
- SUPPLY & SET NEW 80L STAINLESS STEEL RECYCLE BIN AND RUBBISH BIN WITH MODIFIED BIN TOP. REFER TO M.C.C. STANDARD DRAWINGS.
- INSTALL PROPOSED STREETLIGHT FOOTING 1m x 1m x 0.6m (DEEP). REFER TO ELECTRICAL CONSULTANTS DRAWINGS FOR LIGHT AND PIT INSTALLATION DETAILS.

STREET SIGN REPLACEMENT SCHEDULE

	Lt Collins St	#1 DOUBLE SIDED
	Spencer St	#2 DOUBLE SIDED
	Godfrey St	#3 SINGLE SIDED
	Lt Collins St	#4 DOUBLE SIDED



PLAN
CORNER DETAIL 01
SCALE 1:100

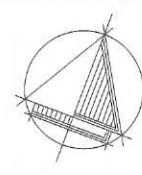
TABLE OF STANDARD M.C.C. FURNITURE DETAILS

DRAWING NUMBER	DRAWING NAME
60104	SWANSTON STREET LIGHT
93152/1 to 93152/5	GLASS CAPE SCREEN
1P 50512	STAINLESS STEEL BIKE STAND INSTALLATION DETAILS
5016-F10 to 5016-F15	SEAT WITH BACK - STAINLESS STEEL VERSION
5117-F01 to 5117-F05	SWANSTON STREET LIGHT
93057-F01 to 93057-F13	80 LITRE RECYCLE BIN - STAINLESS STEEL VERSION SOCKET TYPE
902087-F01 to 902087-F09	DRINKING FOUNTAIN - STAINLESS STEEL ACCESSABLE TYPE
903015-F01 to 903015-F15	80 LITRE BIN - STAINLESS STEEL VERSION SOCKET TYPE
903238-F01 to 903238-F02	COLLINS ST - FURNITURE INSTALLATION ELIZABETH TO QUEEN STREET



Rev.	Revision Details	By	Date
H	ISSUED FOR CONSTRUCTION	RC	05.06.2014
G	ISSUED FOR CONSTRUCTION	RC	29.05.2014
F	MCC / CITYWIDE COMMENTS	RC	28.05.2014
E	STORMWATER LINE AMENDED	JB	07.05.2014
D	ISSUED FOR CONSTRUCTION	NM	04.03.2014
C	TENDER AMENDMENT	NM	24.01.2014
B	TENDER ISSUE	NM	17.12.2013
A	PRELIMINARY ISSUE - FOR DISCUSSION	NM	05.12.2013

CAD FILE	CG130757	PROJECT NUMBER	CG130757
DESIGNED BY	N. MIRATANA	CONCEPT DOCS NO.	-
DRAWN BY	J. BARCELO	SURVEY REFERENCE	CARDNO
CHECKED	H. McCORMICK	SCALE	1:200
CHECKED DATE		DATUM	MSA94 / AHD



ENGINEERING SERVICES

APPROVED BY

Principal Engineer

Date 06.06.2014

Group Manager

Date 06.06.2014

STATUS

CONSTRUCTION ISSUE

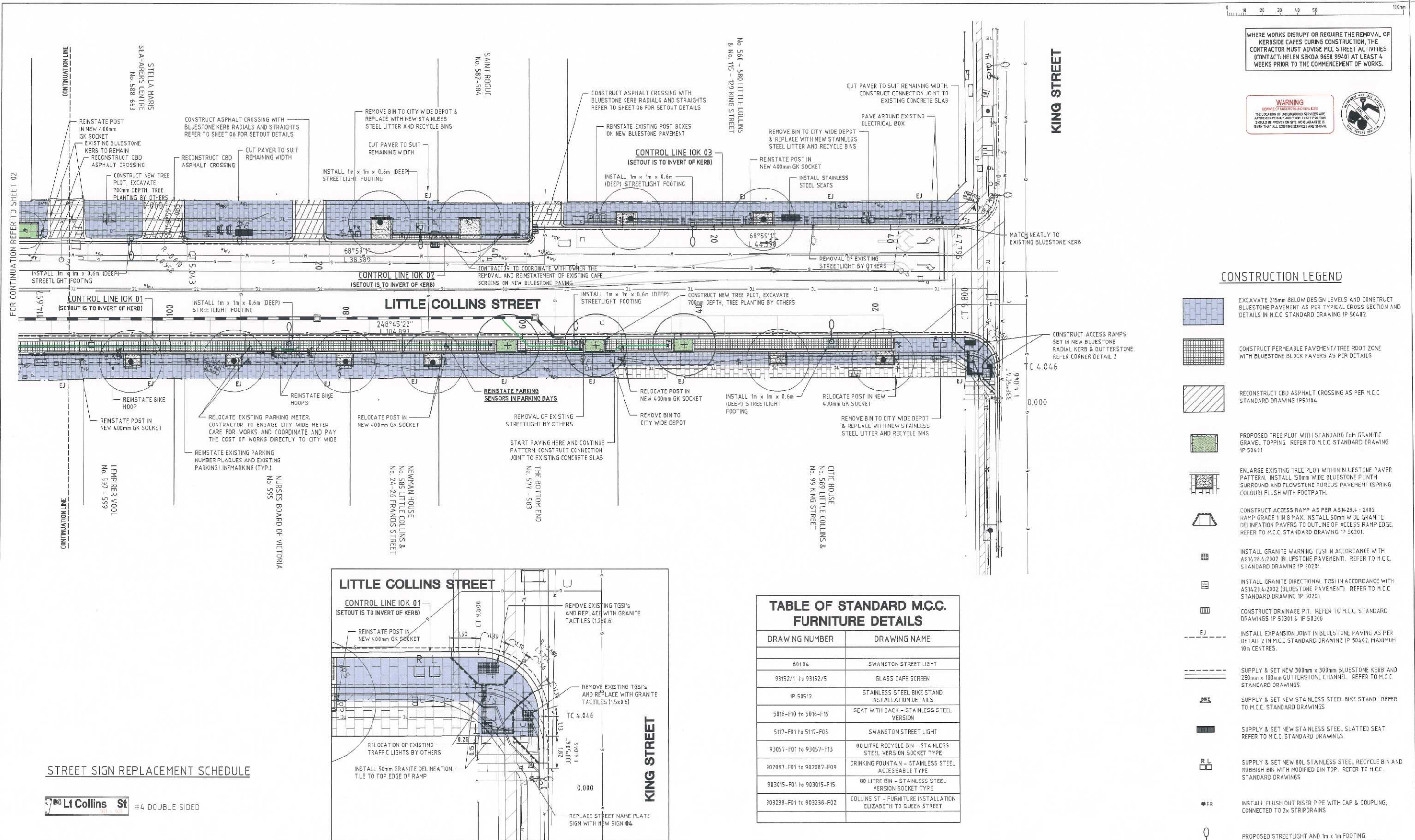
LITTLE COLLINS STREET
KING STREET TO SPENCER STREET
LITTLE COLLINS STREET STREETScape WORKS
CONSTRUCTION PLAN - SHEET 1 OF 2

DRAWING NUMBER 8506A

NUMBER OF SHEETS 02 OF 15

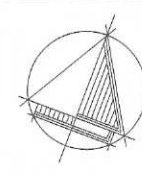
DOCS NUMBER

REVISION H



Rev	Revision Details	By	Date
G	ISSUED FOR CONSTRUCTION	RC	05.06.2014
F	ISSUED FOR CONSTRUCTION	RC	29.05.2014
E	MCC / CITYWIDE COMMENTS	RC	28.05.2014
D	STORMWATER LINE AMENDED	JB	07.05.2014
C	ISSUED FOR CONSTRUCTION	NM	04.03.2014
B	TENDER ISSUE	NM	17.12.2013
A	PRELIMINARY ISSUE - FOR DISCUSSION	NM	05.12.2013

CAD FILE	CG130757	PROJECT NUMBER	CG130757
DESIGNED BY	N. MIRATANA	CONCEPT DOCS NO.	-
DRAWN BY	J. BARCELO	SURVEY REFERENCE	CARDNO
CHECKED	H. MCCORMICK	SCALE	1:200
CHECKED DATE		DATUM	MGA94/AHD



ENGINEERING SERVICES		STATUS	
APPROVED BY		JOB LOCATION	
Principal Engineer	Group Manager	LITTLE COLLINS STREET KING STREET TO SPENCER STREET LITTLE COLLINS STREET STREETScape WORKS CONSTRUCTION PLAN - SHEET 2 OF 2	
Date 06.06.2014	Date 06.06.2014		

CONSTRUCTION ISSUE	
DRAWING NUMBER	8506A
NUMBER OF SHEETS	03 OF 15
DOCS NUMBER	-
REVISION	G